



Certificate of Appropriateness

Milwaukee Historic Preservation Commission/200 E. Wells Street/Milwaukee, WI 53202/phone 414-286-5712/fax 414-286-3004

Property 323 E. WISCONSIN AV. **East Side Commercial Historic District**
Description of work Install new individual raised letter signage, non-illuminated above storefront windows on sign band on the Milwaukee Street elevation to the east of the hotel entrance.
Date issued 5/23/2013 PTS ID 87542 COA, signage Schwanke-Kasten

In accordance with the provisions of Section 320-21 (11) and (12) of the Milwaukee Code of Ordinances, the Milwaukee Historic Preservation Commission has issued a certificate of appropriateness for the work listed above. The work was found to be consistent with preservation guidelines. The following conditions apply to this certificate of appropriateness:

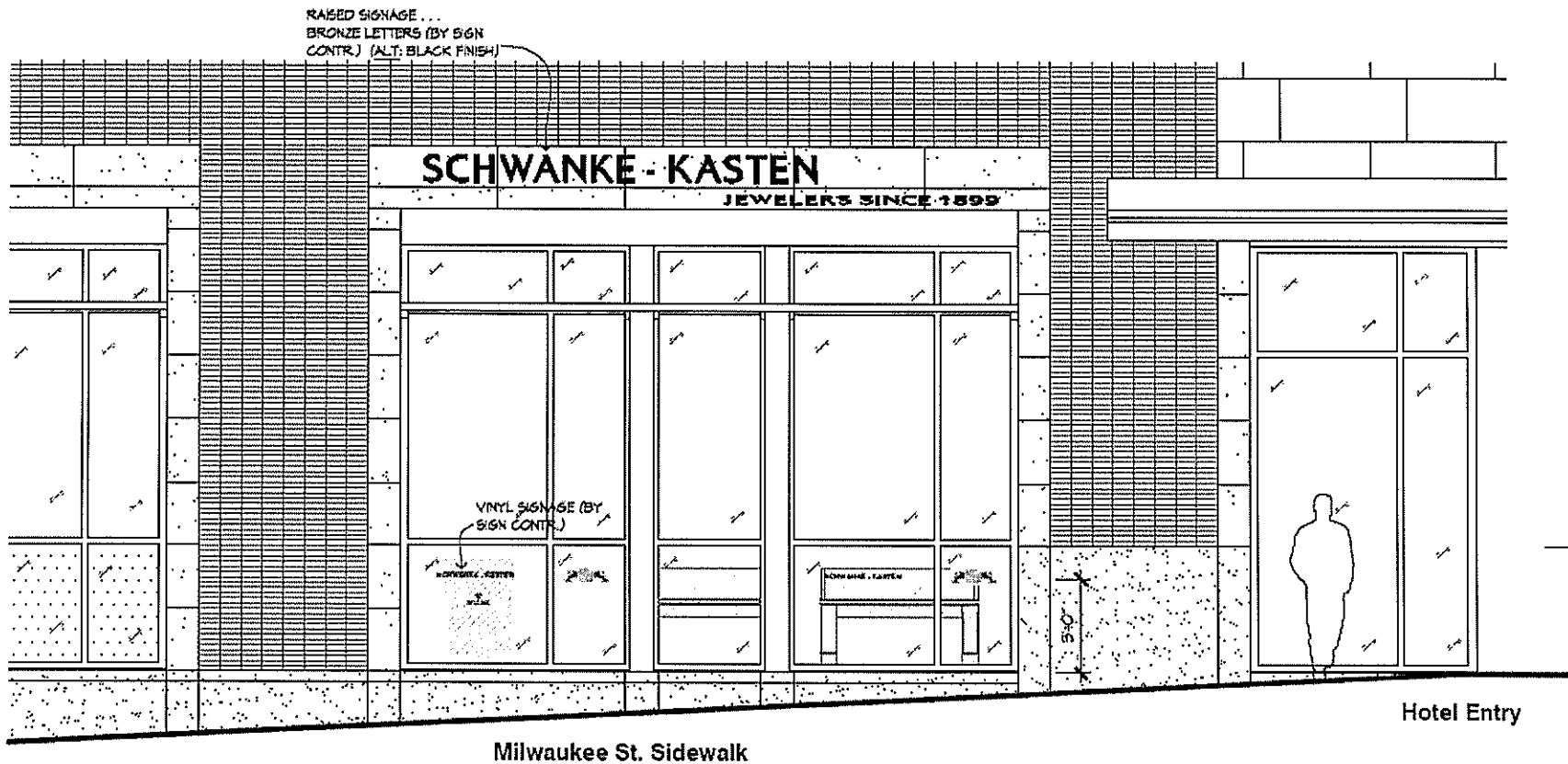
All work will be done according to attached drawings and specifications.

All work must be done in a craftsman-like manner, and must be completed within one year of the date this certificate was issued. Staff must approve any changes or additions to this certificate before work begins. Work that is not completed in accordance with this certificate may be subject to correction orders or citations. If you require technical assistance, please contact Paul Jakubovich of the Historic Preservation staff as follows: Phone: (414) 286-5712 Fax: (414) 286-3004 E-mail: pjakub@milwaukee.gov.

If permits are required, you are responsible for obtaining them from the Milwaukee Development Center. If you have questions about permit requirements, please consult the Development Center's web site, www.milwaukee.gov/build, or call (414) 286-8210.

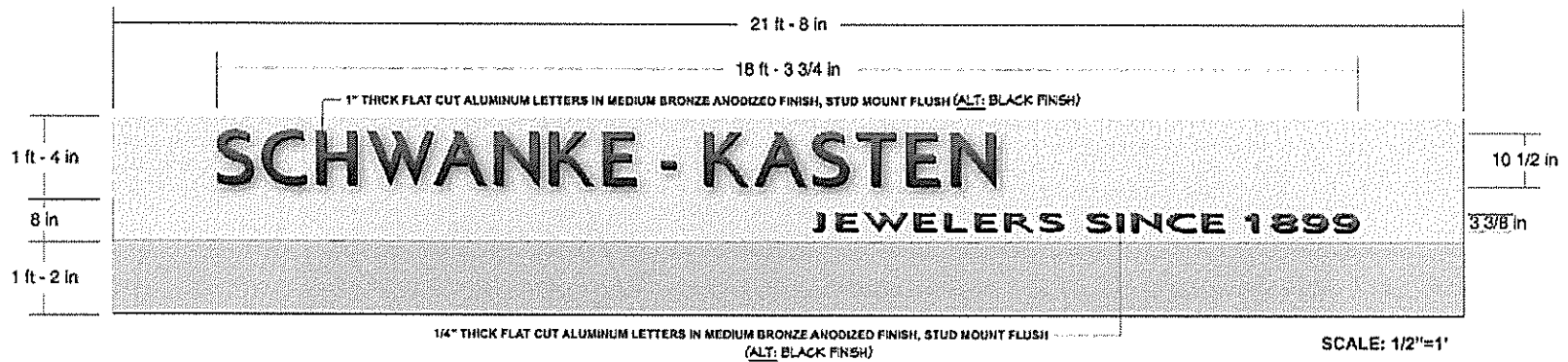
Paul Jakubovich
City of Milwaukee Historic Preservation

Copies to: Development Center, Ald. Robert Bauman, David Plank of Kahler-Slater, Inspector Bill Richter (286-2518), Inspector Heidi Weed



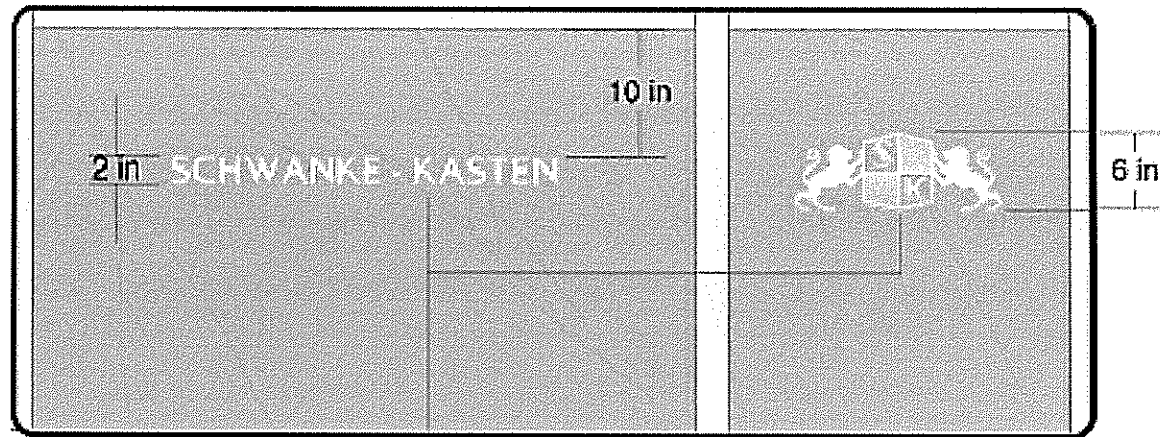
B EXTERIOR ELEVATION

Milwaukee Street elevation showing new raised bronze letters above storefront

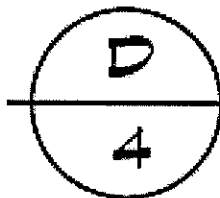


- (1) SET 1" x 3/8" THICK FLAT CUT ALUMINUM LETTERS
- MEDIUM BRONZE ANODIZED FINISH (ALT: BLACK)
- STUD MOUNTED FLUSH TO FASCIA

Detail of new raised letter, non-illuminated for storefront



3M SILVER 3630-121 VINYL GRAPHICS, APPLIED 2ND SURFACE



WINDOW GRAPHICS

SCALE: N.T.S.

Vinyl lettering for storefront windows (see elevation drawing for placement)