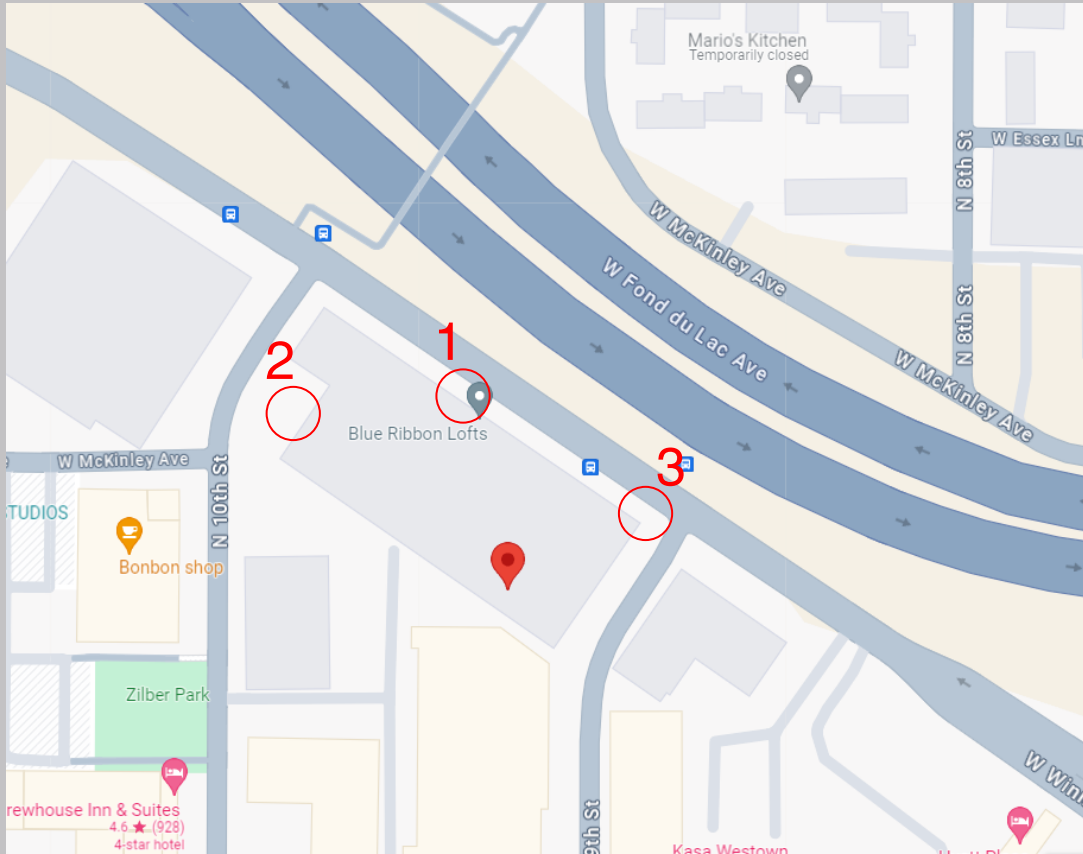


RED TAIL RESIDENTIAL - Projecting Banners - Site Map 1



Location 1



Location 2

Location 3



901 W Winnebago St
 Northeast Facade: 380 In ft. | Northwest Facade: 145 In ft. | Southeast Facade: 150 In ft.
 3 Projecting Banners - All 36" w x 180" h
 135 sq ft Total

CUSTOMER: Aaron Treske
 COMPANY: Red Tail Residential
 COREBRIDGE #: 59705

SALESPERSON: Mitch Cass
 DESIGNER: Mitch Cass
 PROOF DATE: 06/10/2024

REVISIONS:

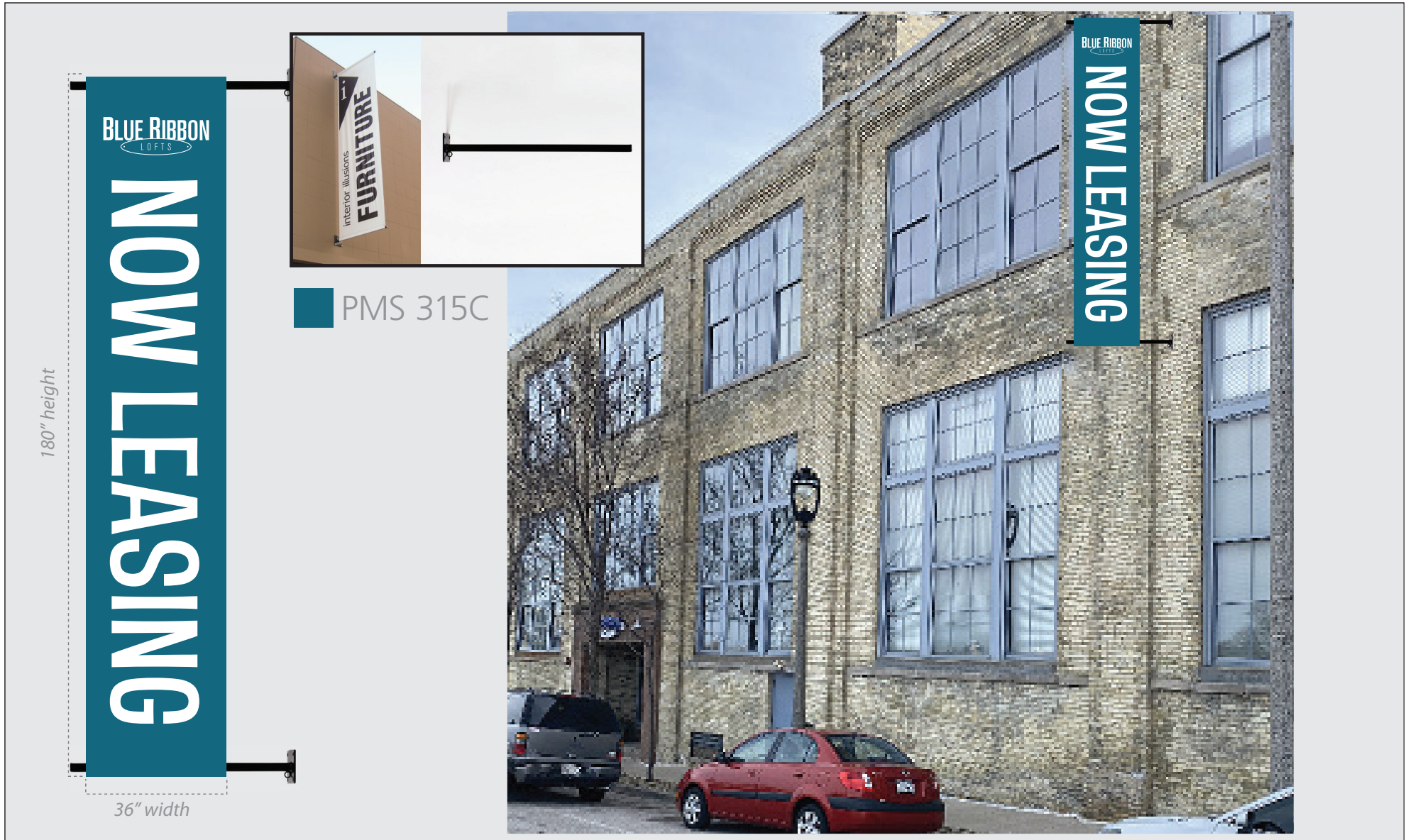
Signarama Milwaukee
 The way to grow your business.
www.milwaukee-signs.com

☎ 414.273.7446 📞 414.273.7447

PLEASE CHECK ALL PROOFS FOR ACCURATE SPELLING, PUNCTUATION AND LAYOUT. Signarama Milwaukee will not be held responsible for correcting mistakes on approved artwork.

5061 W. STATE ST. MILWAUKEE, WI 53208

BLUE RIBBON LOFTS - PROJECTING BUILDING BANNERS-PROOF 4



36" w x 180" h size

18oz Blockout Banner Material w Digital Print | Double Sided | 3 Inch Pole Pockets on Top & Bottom | Reinforced Corners | Grommets in all 4 corners

Straight Arm Banner Brackets | Wall Mount | Welded Steel - Powder Coated Black | Square Tube Arms | 2 Arms Per Banner | 38" Long Arm for 36" wide Banner | 6x6 Mounting Plates

CUSTOMER: Aaron Treske
COMPANY: Red Tail Residential
COREBRIDGE #: 59705

SALESPERSON: Mitch Cass
DESIGNER: Anna
PROOF DATE: 4/8/2024

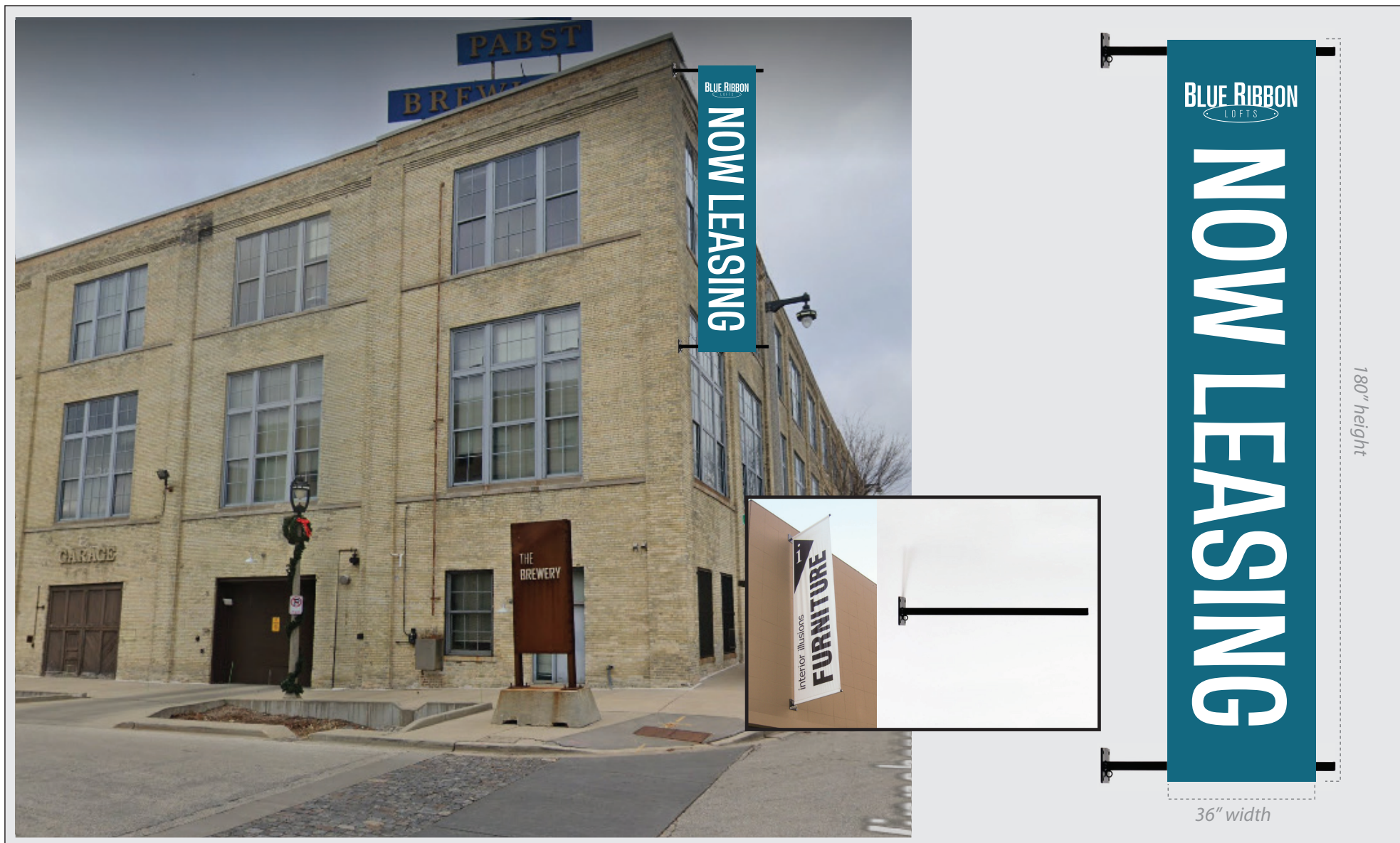
REVISIONS:



 **Signarama**
Milwaukee
The way to grow your business.
www.milwaukee-signs.com
☎ 414.273.7446 📍 414.273.7447

PLEASE CHECK ALL PROOFS FOR ACCURATE SPELLING, PUNCTUATION AND LAYOUT. Signarama Milwaukee will not be held responsible for correcting mistakes on approved artwork. Actual printed colors may be different than electronic proof. If Pantone or other color matches are required the customer must provide color matching instructions. 5061 W. STATE ST. MILWAUKEE, WI 53208

BLUE RIBBON LOFTS - PROJECTING BUILDING BANNERS-PROOF 4



36" w x 180" h size

18oz Blockout Banner Material w Digital Print | Double Sided | 3 Inch Pole Pockets on Top & Bottom | Reinforced Corners | Grommets in all 4 corners

Straight Arm Banner Brackets | Wall Mount | Welded Steel - Powder Coated Black | Square Tube Arms | 2 Arms Per Banner | 38" Long Arm for 36" wide Banner | 6x6 Mounting Plates

CUSTOMER: Aaron Treske
COMPANY: Red Tail Residential
COREBRIDGE #: 59705

SALESPERSON: Mitch Cass
DESIGNER: Anna
PROOF DATE: 4/8/2024

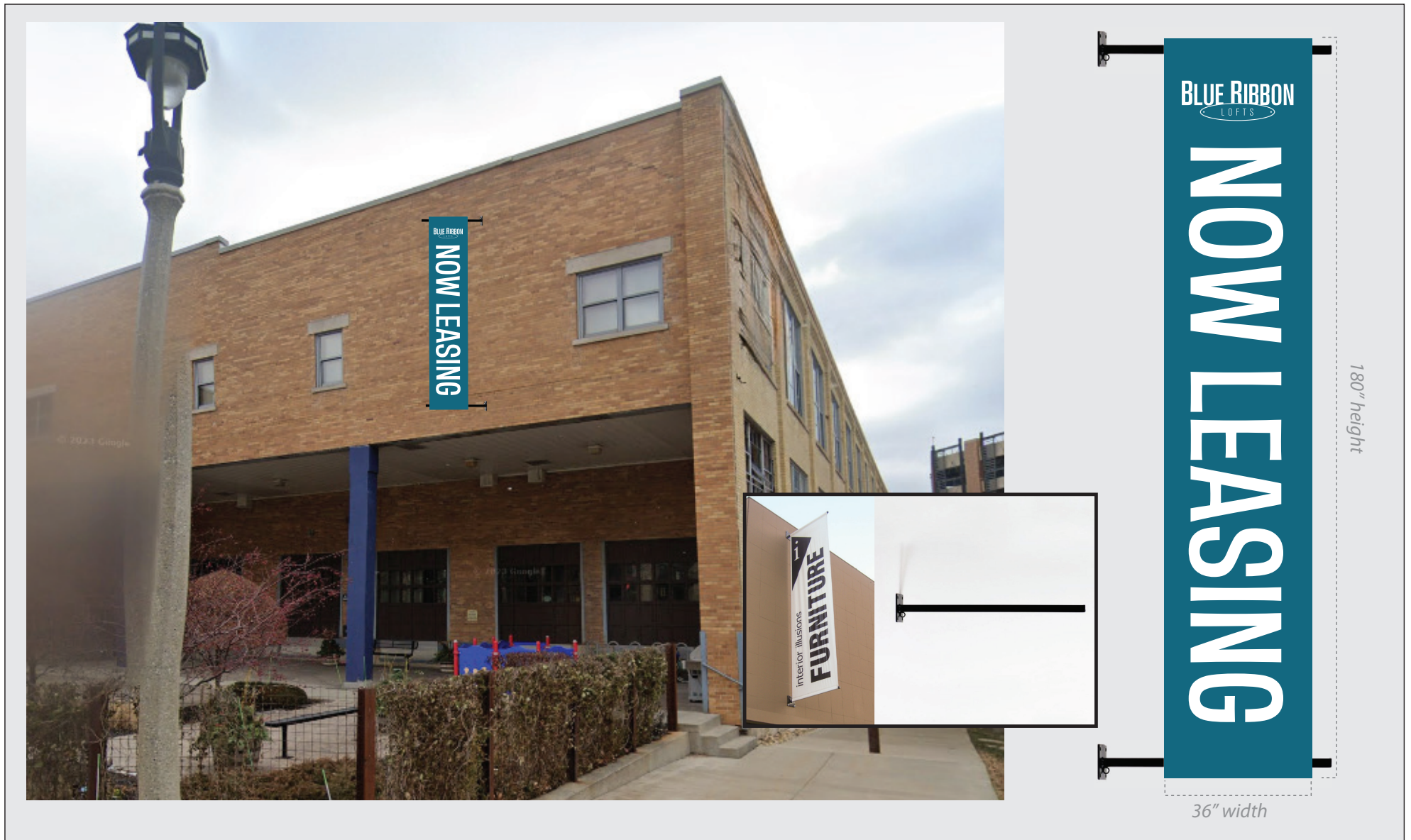
REVISIONS:



 **Signarama** Milwaukee
The way to grow your business.
www.milwaukee-signs.com
☎ 414.273.7446 📍 414.273.7447

PLEASE CHECK ALL PROOFS FOR ACCURATE SPELLING, PUNCTUATION AND LAYOUT. Signarama Milwaukee will not be held responsible for correcting mistakes on approved artwork. 5061 W. STATE ST. MILWAUKEE, WI 53208
Actual printed colors may be different than electronic proof. If Pantone or other color matches are required the customer must provide color matching instructions.

BLUE RIBBON LOFTS - PROJECTING BUILDING BANNERS-PROOF 4



36" w x 180" h size

18oz Blockout Banner Material w Digital Print | Double Sided | 3 Inch Pole Pockets on Top & Bottom | Reinforced Corners | Grommets in all 4 corners

Straight Arm Banner Brackets | Wall Mount | Welded Steel - Powder Coated Black | Square Tube Arms | 2 Arms Per Banner | 38" Long Arm for 36" wide Banner | 6x6 Mounting Plates

CUSTOMER: Aaron Treske
COMPANY: Red Tail Residential
COREBRIDGE #: 59705

SALESPERSON: Mitch Cass
DESIGNER: Anna
PROOF DATE: 4/25/2024

REVISIONS:



 **Signarama** Milwaukee
The way to grow your business.
www.milwaukee-signs.com
☎ 414.273.7446 📍 414.273.7447

PLEASE CHECK ALL PROOFS FOR ACCURATE SPELLING, PUNCTUATION AND LAYOUT. Signarama Milwaukee will not be held responsible for correcting mistakes on approved artwork. 5061 W. STATE ST. MILWAUKEE, WI 53208
Actual printed colors may be different than electronic proof. If Pantone or other color matches are required the customer must provide color matching instructions.