

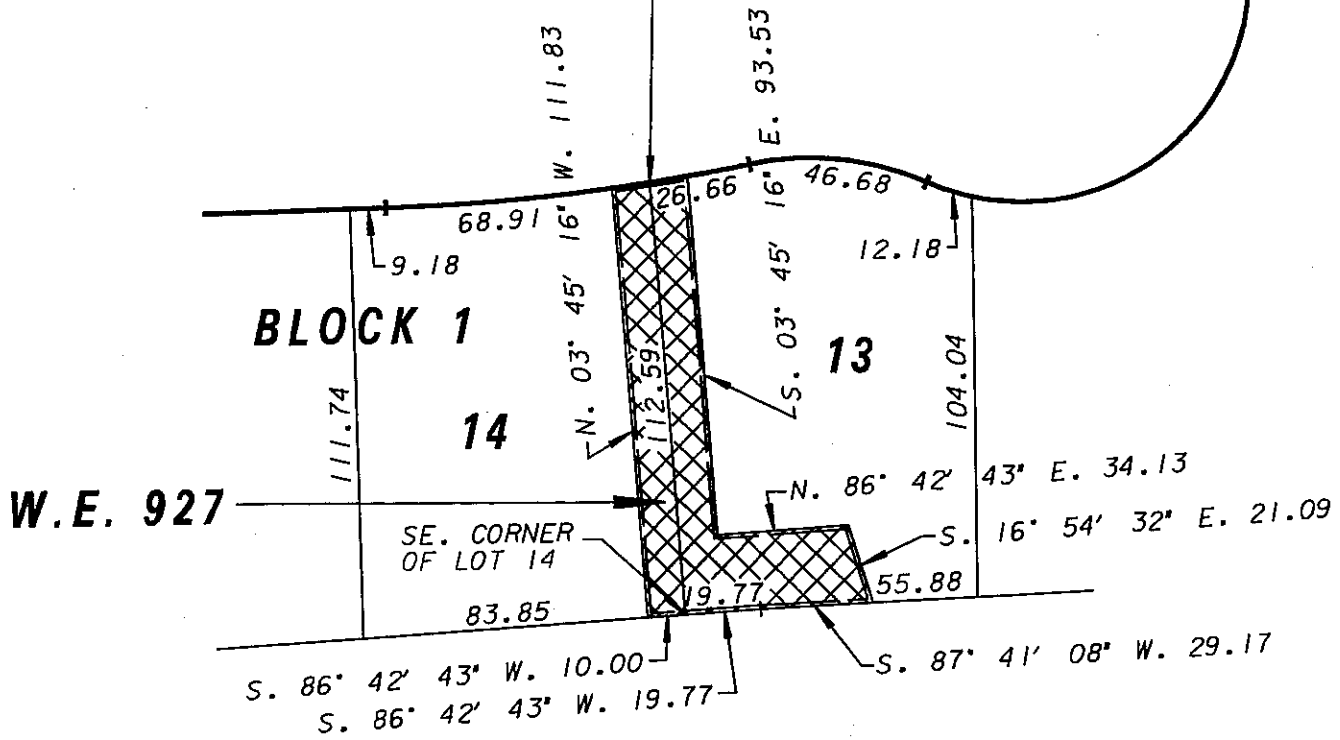
NE. 1/4 OF SEC. 17, T. 8 N., R. 21 E.

RIVER VIEW SUBDIVISION

CT.

R - 530.00
 A - 20.06
 C - 20.06
 BRG - N. 81° 50' 55" E.

W. PARKLAND



WATER EASEMENT W.E. 927

Milwaukee
Water Works

Water Engineering

Department of Public Works
 Milwaukee, Wisconsin

WATER EASEMENT

IN

RIVER VIEW SUBDIVISION

AT
 AND

LOTS 13 AND 14, BLOCK 1
 115' S/O W. PARKLAND CT.
 W. PARKLAND CT.

SCALE 1" = 50'

APPROVED

DATE

1/4 SEC. NO. 079

PLAN DATE 11-22-06

DRAWN BY P.W.P.

CHECKED BY

REVIEWED BY

WORK ORDER WT430063003

Michael J. Sells 1-11-07
 MAINS DESIGN ENGINEER
Joseph P. Sand 1-11-07
 CHIEF DESIGN ENGINEER
C. Lewis 1/12/07
 SPECIAL DEPUTY COMMISSIONER OF PUBLIC WORKS

