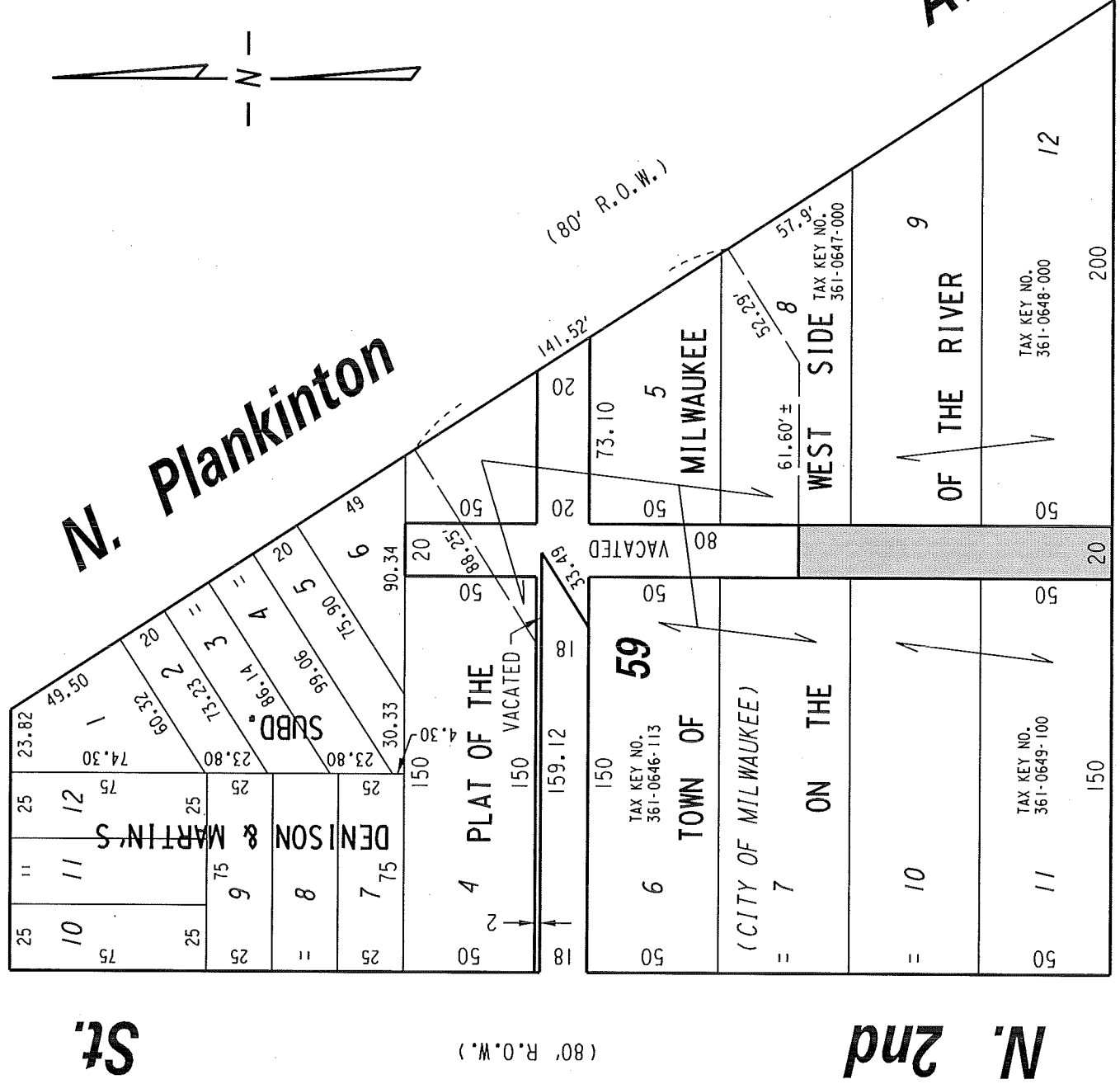


392

N.E. 1/4 SEC. 29, T.7N., R.22E.

(80' R.O.W.)

W. Wells St.



W. Wisconsin

(80' R.O.W.) Ave.

EXHIBIT "A"

FILE NO. 140724

INFRASTRUCTURE SERVICES DIVISION

MILWAUKEE, WISCONSIN

ASSIGNED TO: W.E. FUCHS
 DRAWN BY: W.E.F.
 PROJECT/GRANT NO.: WK52337357
 APPROVED BY:

CH'K'D. BY: W.E. FUCHS
 DATE: OCT. 22, 2014
 SCALE: 1" = 60'

PORTION OF PUBLIC
 ALLEY PROPOSED
 TO BE VACATED



[Signature]
 CENTRAL DRAFTING & RECORDS MANAGER
 CIVIL ENGINEER