

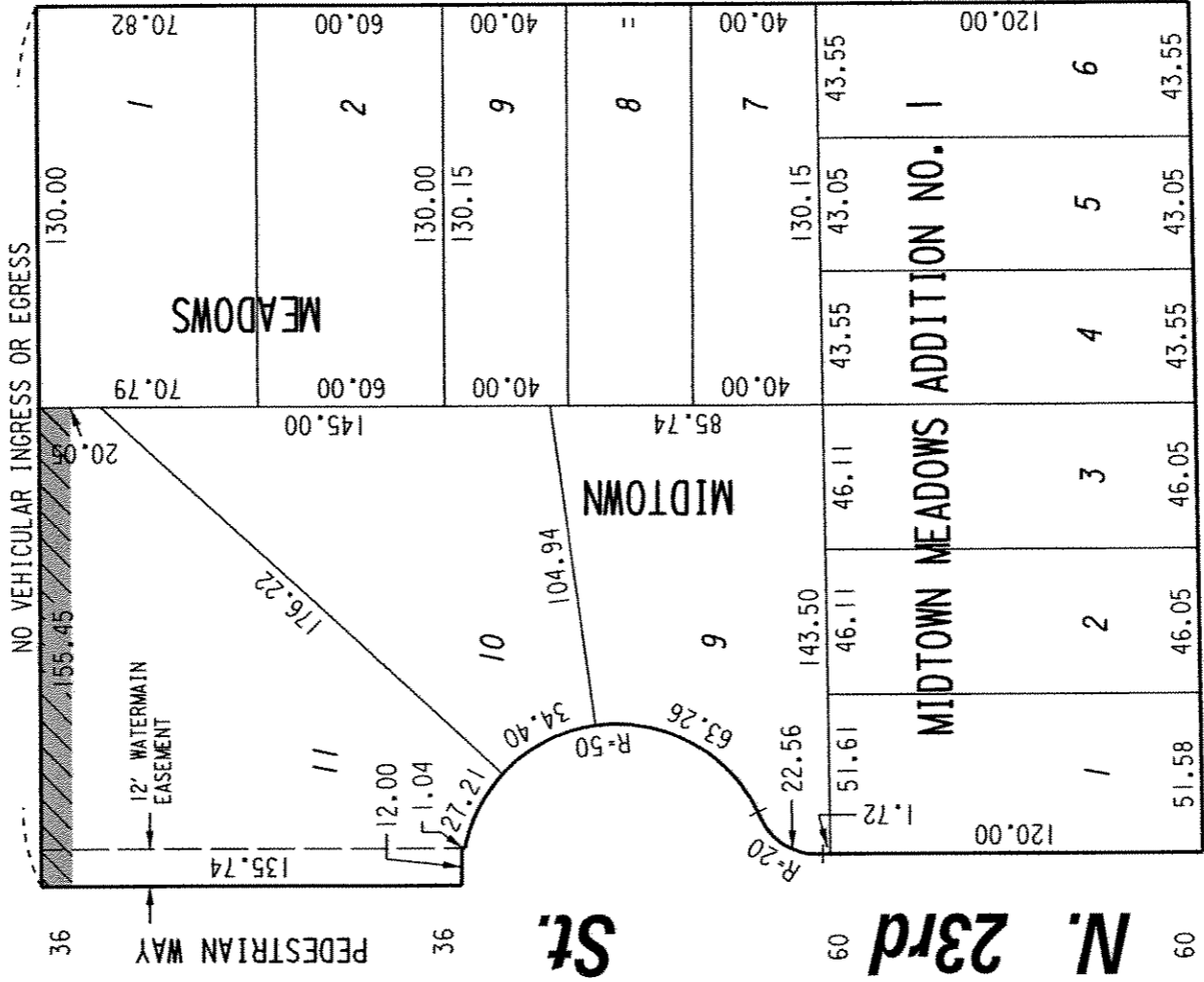
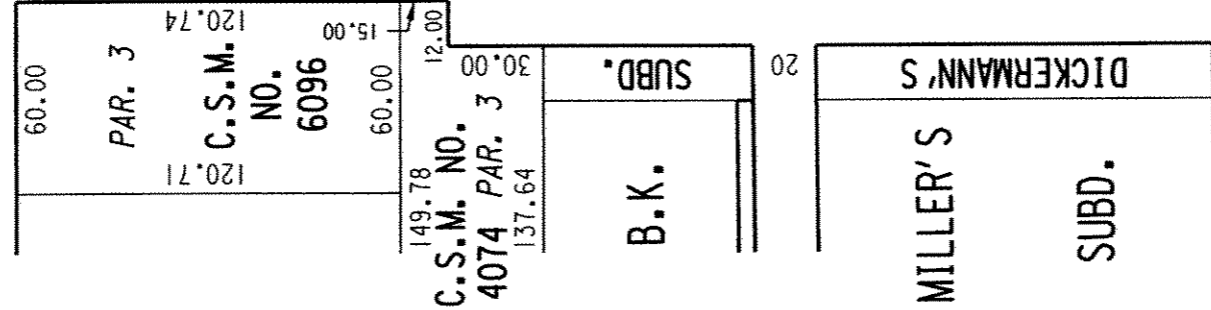
364

S.W. 1/4 SEC. 19, T.7N., R.22E.

W. Walnut St.

St.

(130' R.O.W.)



(R.O.W. VARIES)

W. Galena St. (60' R.O.W.)

EXHIBIT " "

FILE NO.

INFRASTRUCTURE SERVICES DIVISION

MILWAUKEE, WISCONSIN

ASSIGNED TO: W.E. FUCHS
 DRAWN BY: W.E.F.
 PROJECT/GRANT NO.: WK52360047
 APPROVED BY:

CH'K'D. BY: W.E. FUCHS
 DATE: MARCH 22, 2004
 SCALE: 1" = 60'

NO VEHICULAR INGRESS OR EGRESS RESTRICTION TO BE RELEASED



Maia Lindholm
 CENTRAL DRAFTING & RECORDS MANAGER

W.E. Fuchs
 CIVIL ENGINEER