

E. Garfield

(70' R.O.W.)

Ave.

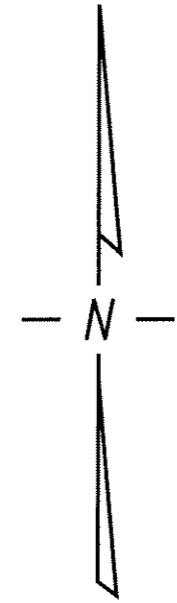
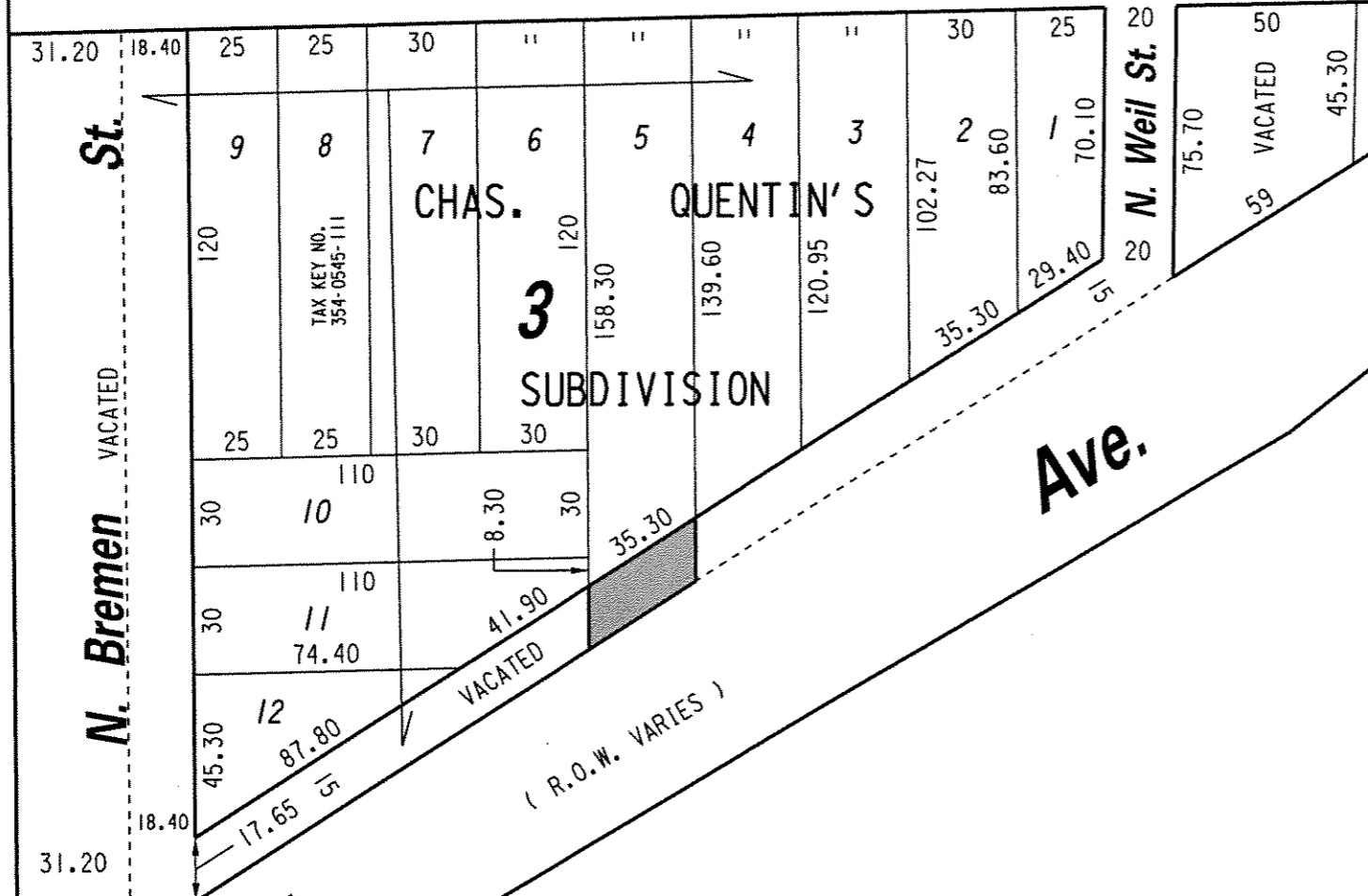


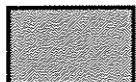
EXHIBIT "A"
FILE NO. 030443

INFRASTRUCTURE SERVICES DIVISION
 MILWAUKEE, WISCONSIN

ASSIGNED TO: P.A. VELLA
 DRAWN BY: P.A.V.
 PROJECT/GRANT NO.: WK52337207
 APPROVED BY:

CH'K'D. BY: W.E. FUCHS
 DATE: FEB. 11, 2005
 SCALE: 1" = 50'

REVISED 5-17-2006
 LIMITS REVISED

 PORTION OF PUBLIC ALLEY PROPOSED TO BE VACATED

marcia Lindeholm
 CENTRAL DRAFTING & RECORDS MANAGER

Jeffrey Polenske
 CITY ENGINEER