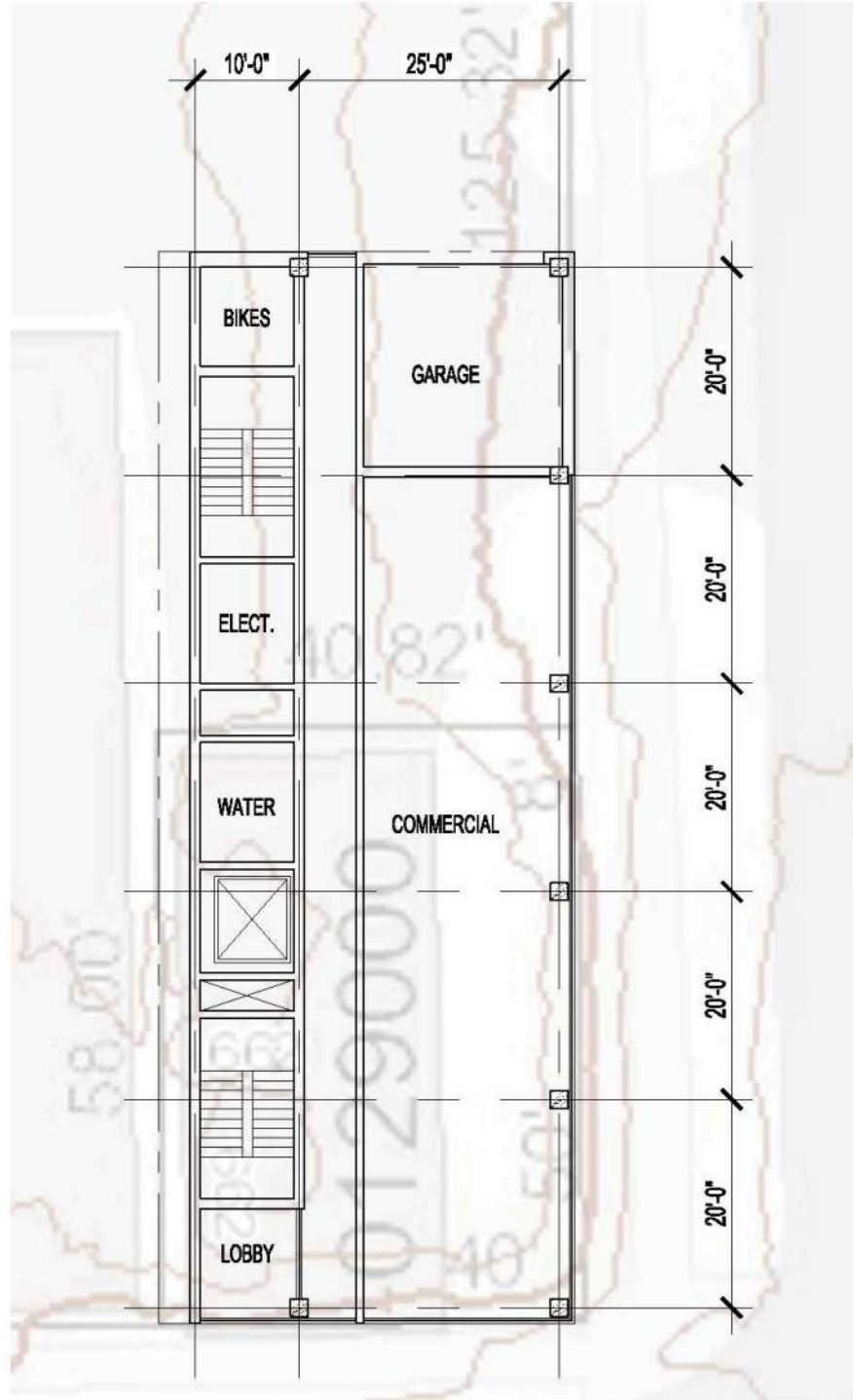


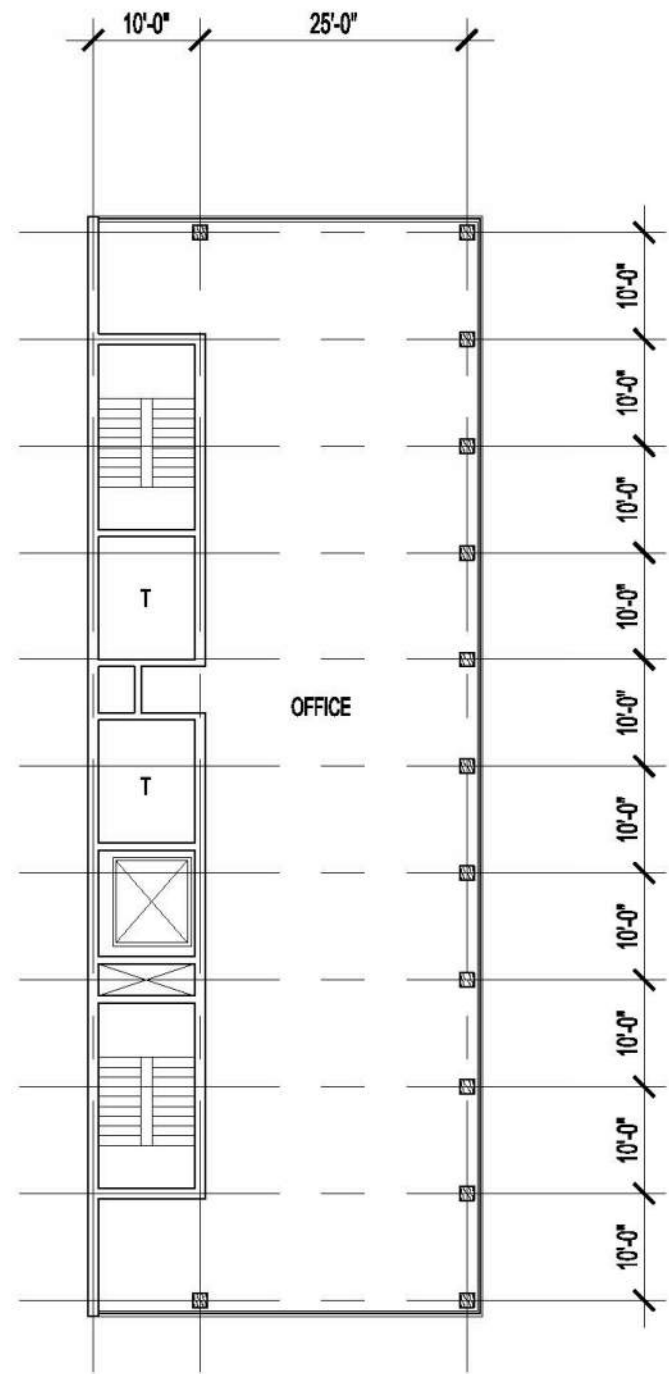


AUGUST 18, 2022
1703 N. VEL R. PHILLIPS AVENUE

KA



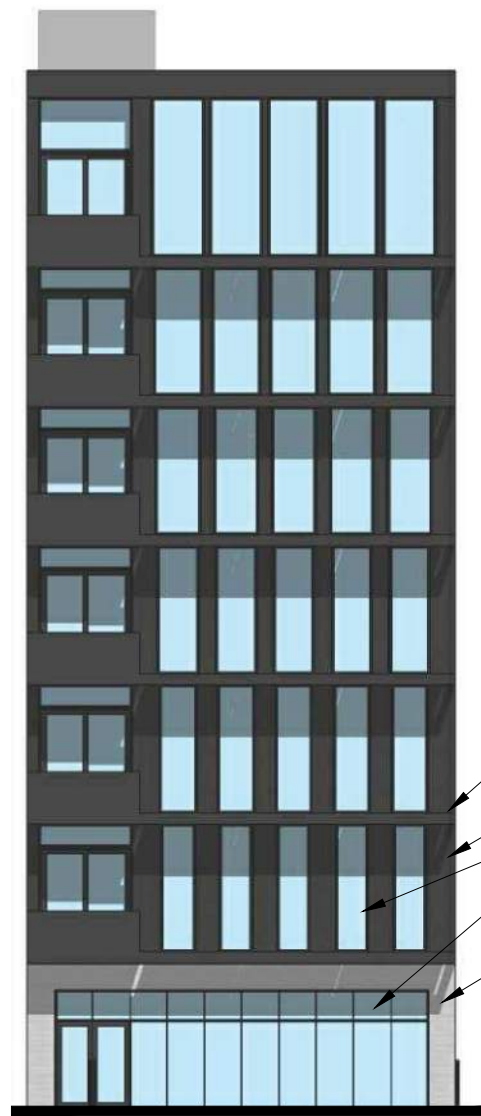
GROUND FLOOR
1/16" = 1'-0"



TYPICAL FLOOR
1/16" = 1'-0"

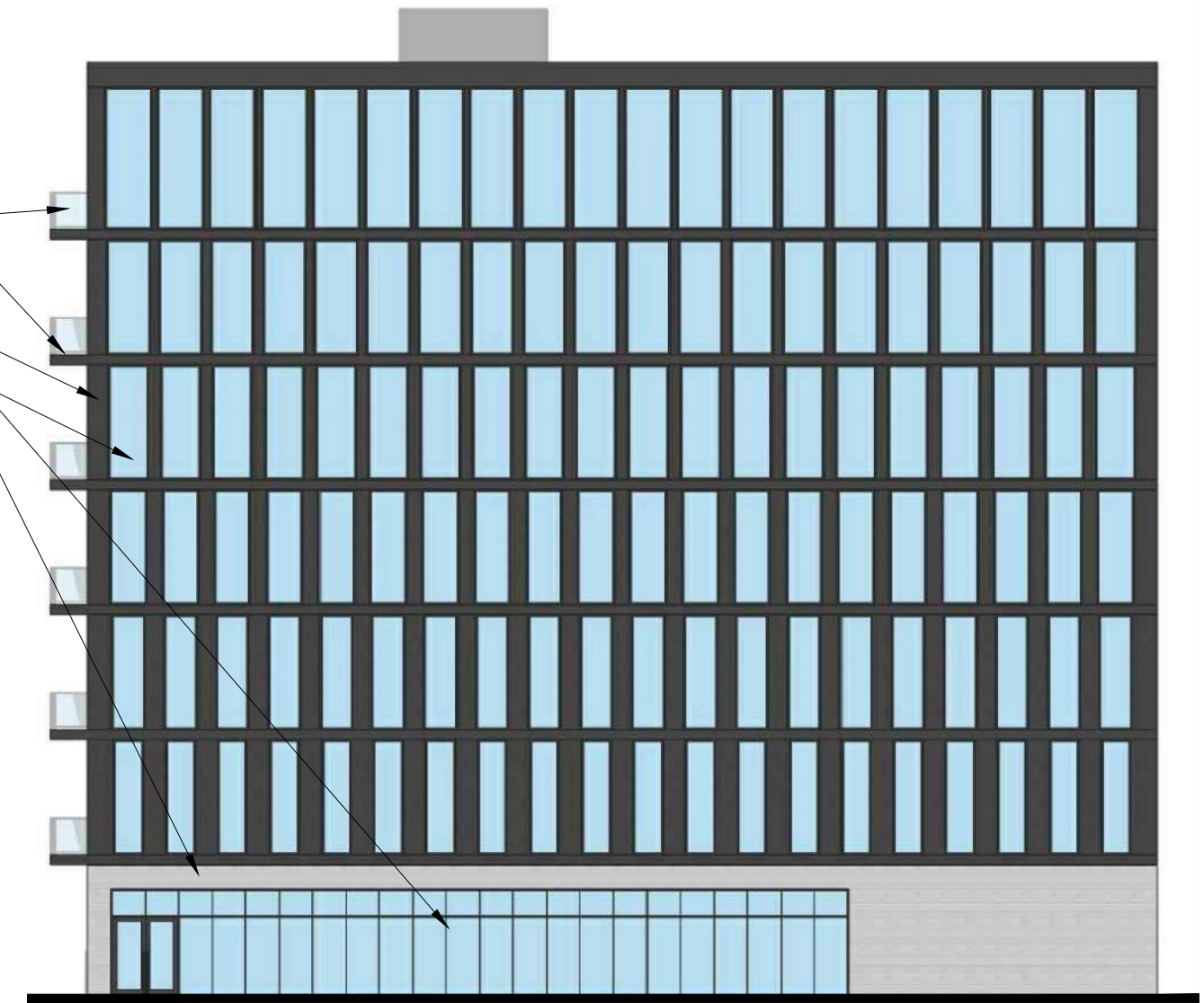
- ROOF
190' - 0"
- SEVENTH FLOOR
174' - 0"
- SIXTH FLOOR
162' - 0"
- FIFTH FLOOR
150' - 0"
- FOURTH FLOOR
138' - 0"
- THIRD FLOOR
126' - 0"
- SECOND FLOOR
114' - 0"
- FIRST FLOOR
100' - 0"

SOUTH ELEVATION
1/16" = 1'-0"



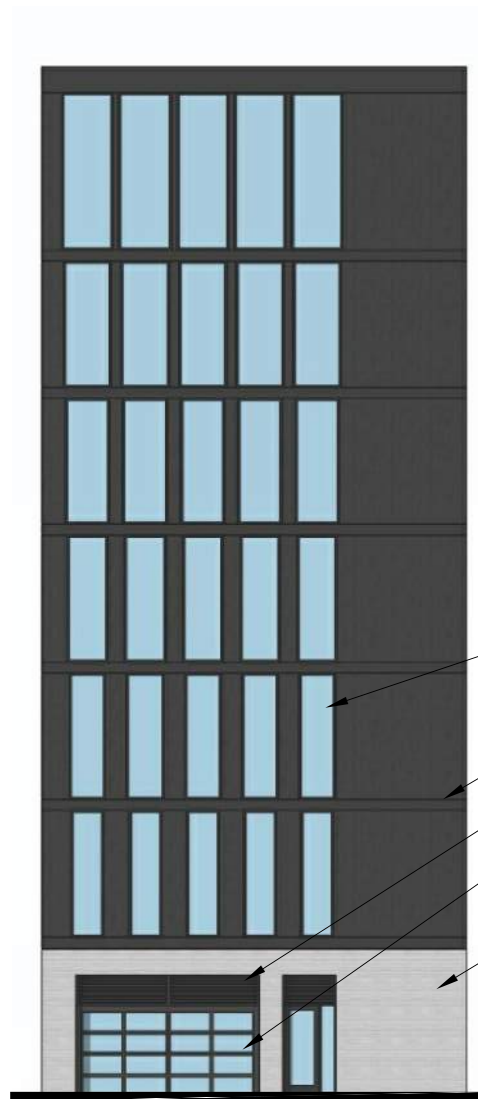
- GLAZED RAILING
- PHOTOVOLTAIC PANELS AS SUN-SHADING
- METAL PANEL
- STOREFRONT WINDOW SYSTEM
- BOARD FORMED CONCRETE

- PHOTOVOLTAIC PANELS AS SUN-SHADING
- METAL PANEL
- STOREFRONT WINDOW SYSTEM
- BOARD FORMED CONCRETE



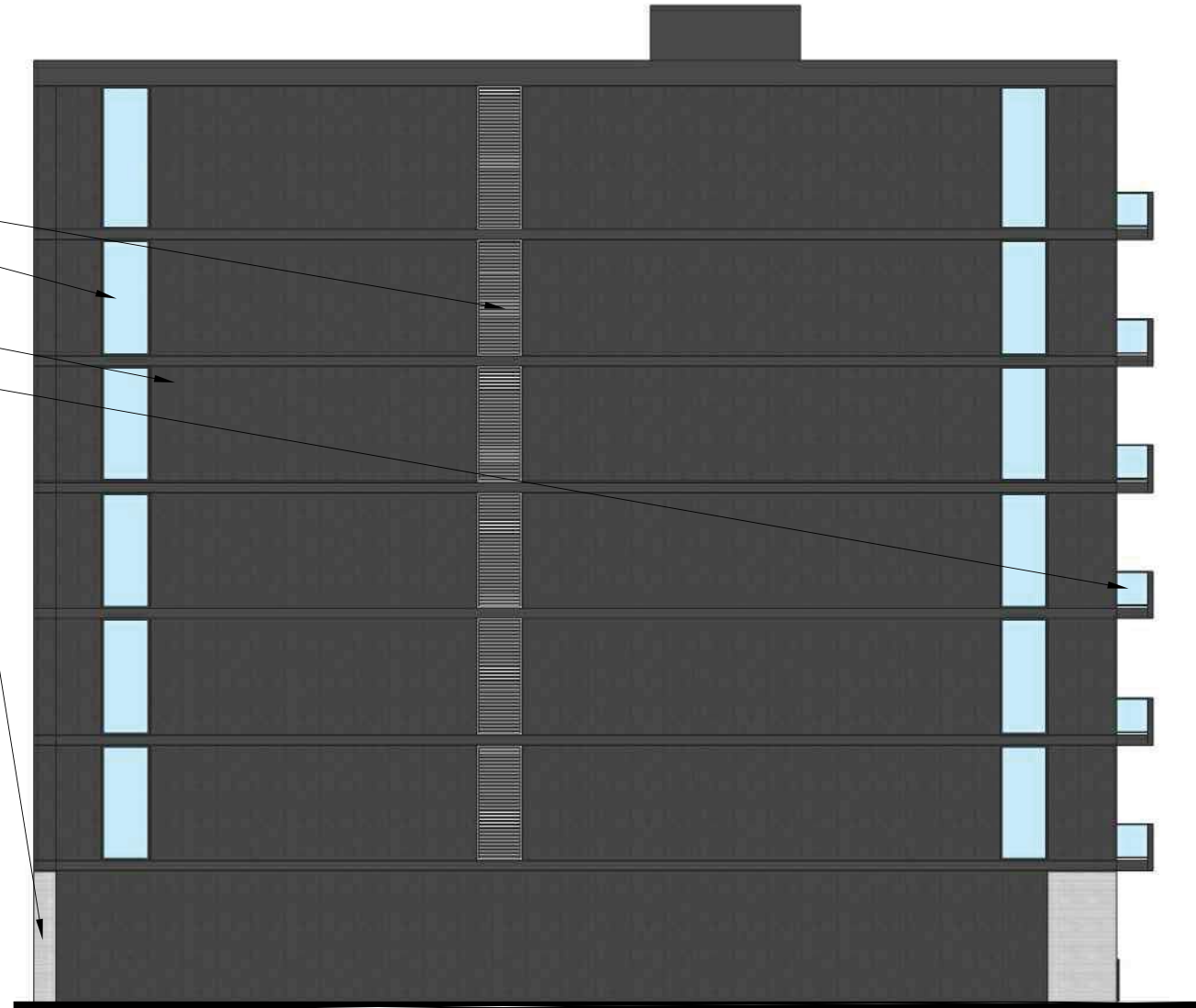
EAST ELEVATION
1/16" = 1'-0"

- ROOF
190' - 0"
- SEVENTH FLOOR
174' - 0"
- SIXTH FLOOR
162' - 0"
- FIFTH FLOOR
150' - 0"
- FOURTH FLOOR
138' - 0"
- THIRD FLOOR
126' - 0"
- SECOND FLOOR
114' - 0"
- FIRST FLOOR
100' - 0"



NORTH ELEVATION
1/16" = 1'-0"

- LOUVERS
 - STOREFRONT WINDOW SYSTEM
 - METAL PANEL
 - GLAZED RAILING
 - BOARD FORMED CONCRETE
-
- STOREFRONT WINDOW SYSTEM
 - METAL PANEL
 - LOUVERS
 - OVERHEAD DOOR WITH FROSTED GLASS
 - BOARD FORMED CONCRETE



WEST ELEVATION
1/16" = 1'-0"



AUGUST 18, 2022
1703 N. VEL R. PHILLIPS AVENUE

KA