

EXISTING PUBLIC ALLEY

HIGHLAND AVENUE

1
SITE/LANDSCAPING PLAN  
3/32" = 1'-0"
FILENAME

HEARTLAND HOUSING INC.  
 208 S. LaSalle Street, Ste. 1818  
 Chicago, IL 60604

PROJECT: 0 6 1 0 0 1  
 DATE: DECEMBER 20, 2 0 0 6

# 12th & HIGHLAND RENOVATION

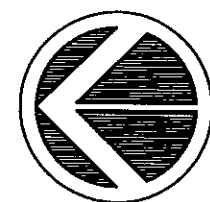
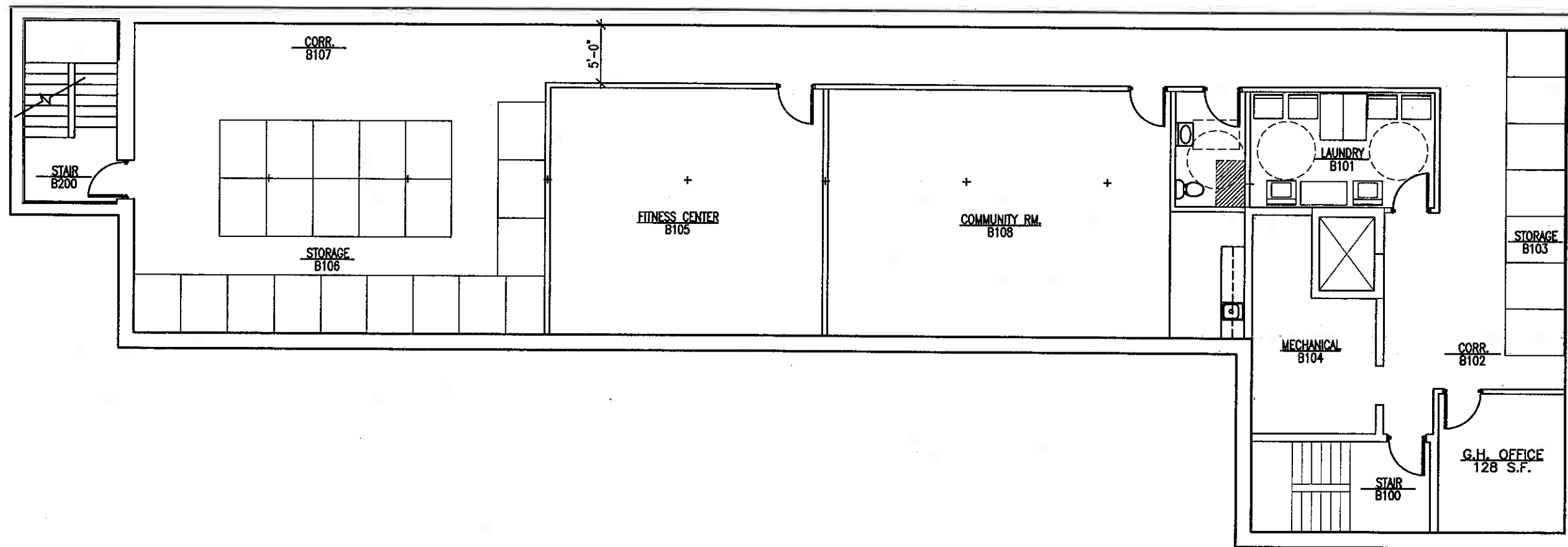
Milwaukee, WI

T 414 . 220 . 9640  
 F 414 . 220 . 9595

P. O. BOX 510663  
 MILWAUKEE, WI 53203

CONTINUUM

ARCHITECTS + PLANNERS, S.C.



**1 PROPOSED BASEMENT PLAN**

3/32" = 1'-0"

FILENAME

HEARTLAND HOUSING INC.

208 S. LaSalle Street, Ste. 1818  
Chicago, IL 60604

PROJECT: 061001

DATE: DECEMBER 20, 2006

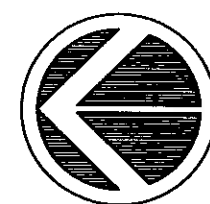
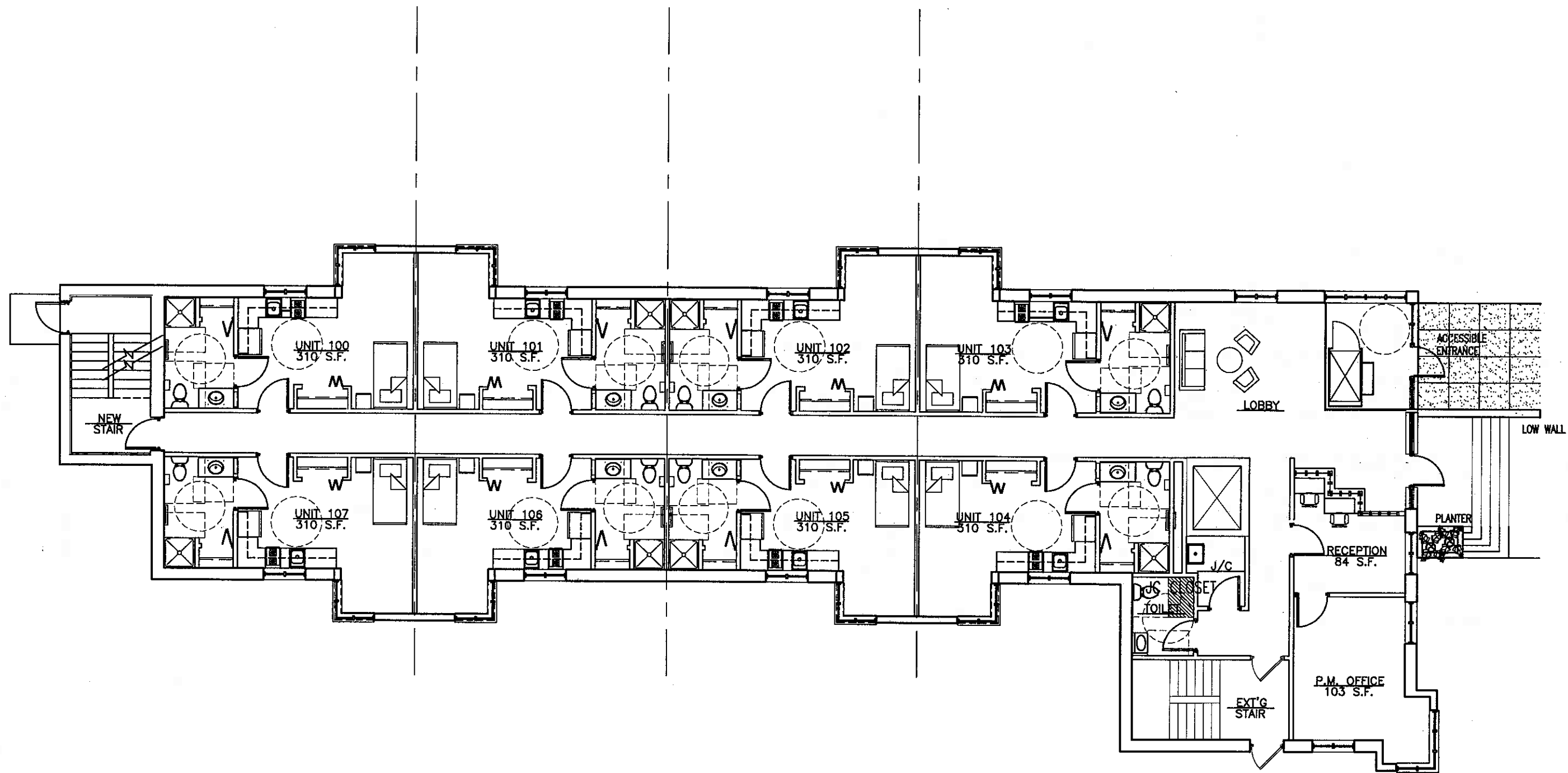
**12th & HIGHLAND RENOVATION**

Milwaukee, WI

T 414.220.9640  
F 414.220.9595

P.O. BOX 510663  
MILWAUKEE, WI 53203

**CONTINUUM**  
ARCHITECTS + PLANNERS, S.C.



1 PROPOSED FIRST FLOOR PLAN

3/32" = 1'-0"

FILENAME

HEARTLAND HOUSING INC.

208 S. LaSalle Street, Ste. 1818  
Chicago, IL 60604

PROJECT: 061001  
DATE: DECEMBER 20, 2006

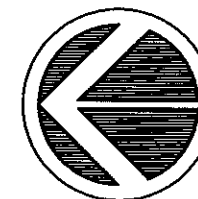
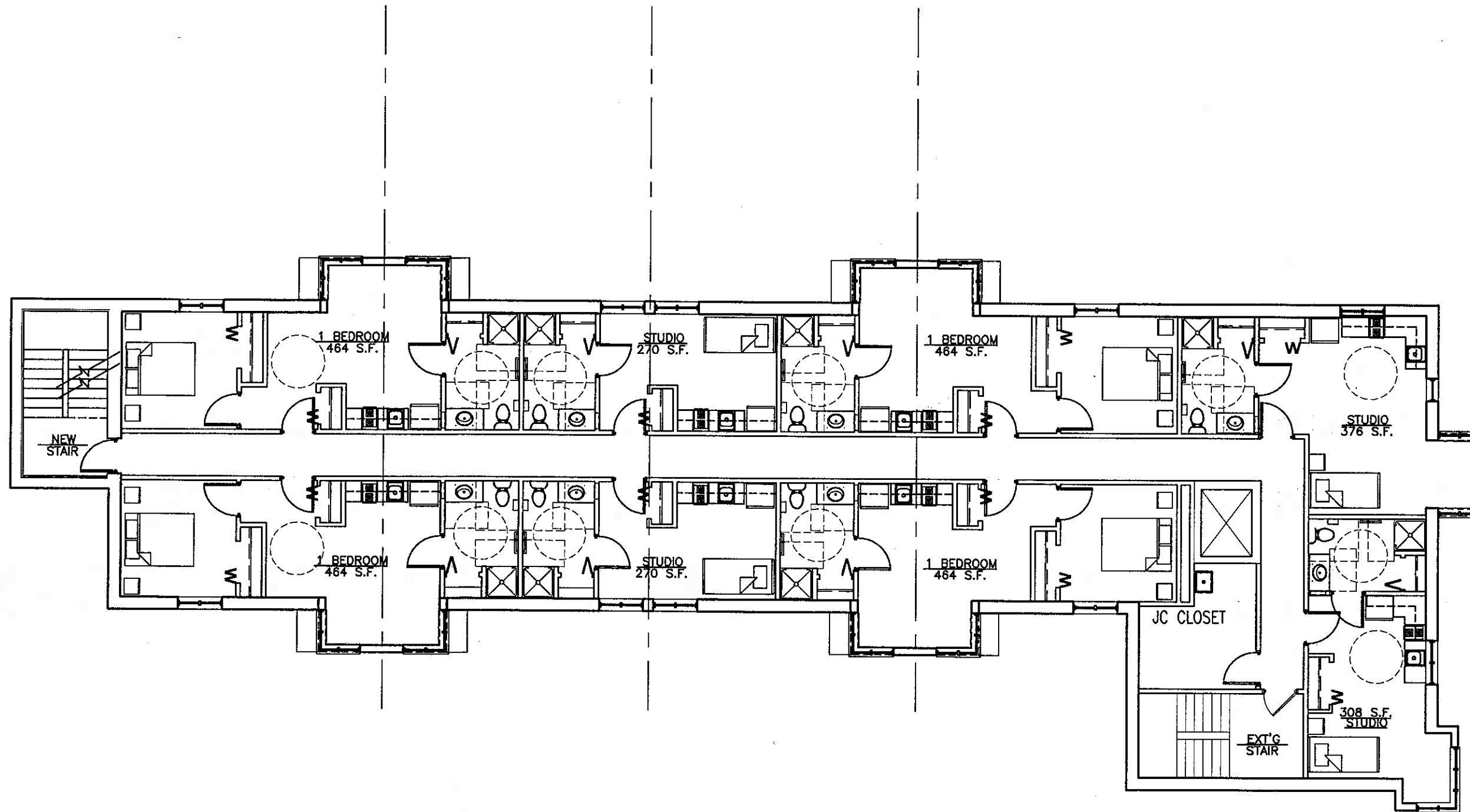
12th & HIGHLAND RENOVATION

Milwaukee, WI

T 414.220.9640  
F 414.220.9595

P.O. BOX 510663  
MILWAUKEE, WI 53203

CONTINUUM ARCHITECTS + PLANNERS, S.C.



1 PROPOSED 2ND & 3RD FLOOR PLAN

3/32" = 1'-0"

FILENAME

HEARTLAND HOUSING INC.

208 S. LaSalle Street, Ste. 1818  
Chicago, IL 60604

PROJECT: 061001

DATE: DECEMBER 20, 2006

12th & HIGHLAND RENOVATION

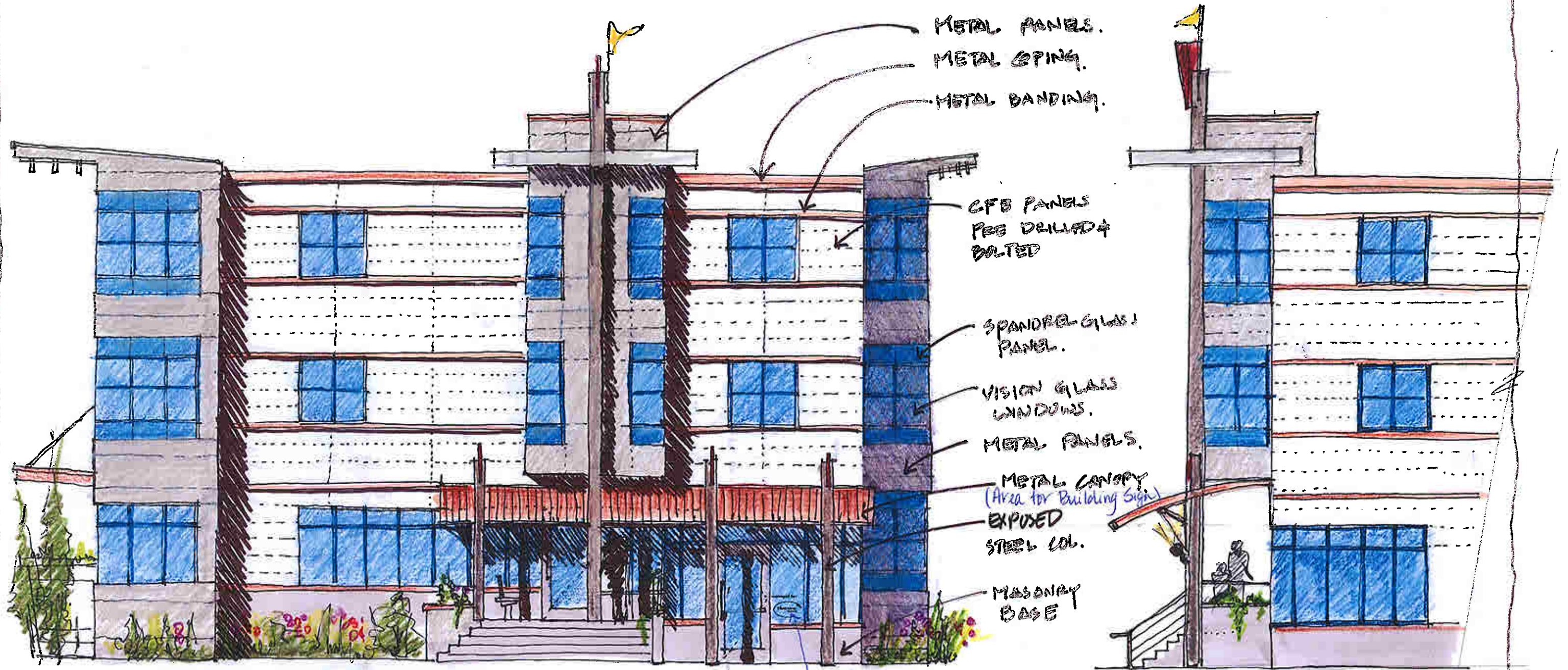
Milwaukee, WI

T 414.220.9640  
F 414.220.9595

P.O. BOX 510663  
MILWAUKEE, WI 53203

CONTINUUM ARCHITECTS + PLANNERS, S.C.





Management Sign

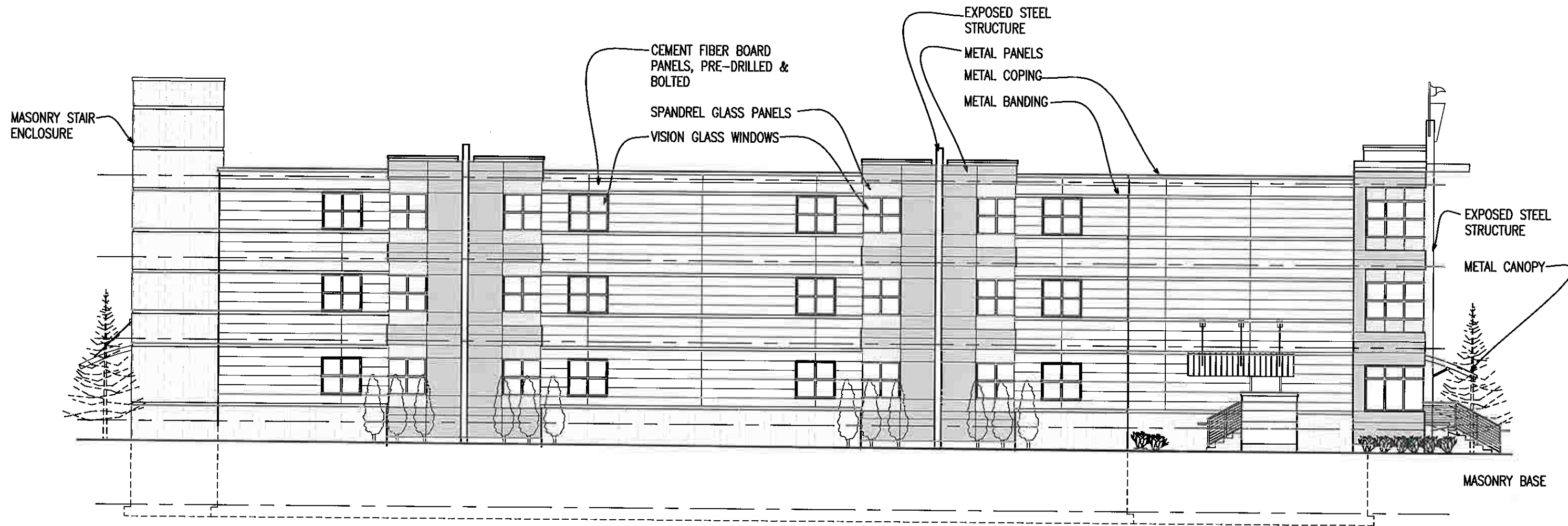
HEARTLAND HOUSING  
12/20/06

12th & HIGHLAND RENOVATION

CONTINUUM  
ARCHITECTS.

© COPY RIGHTS 06





1 EXTERIOR ELEVATION - WEST  
 3/32" = 1'-0"

FILENAME

HEARTLAND HOUSING INC.

208 S. LaSalle Street, Ste. 1818  
 Chicago, IL 60604

PROJECT: 061001  
 DATE: DECEMBER 20, 2006

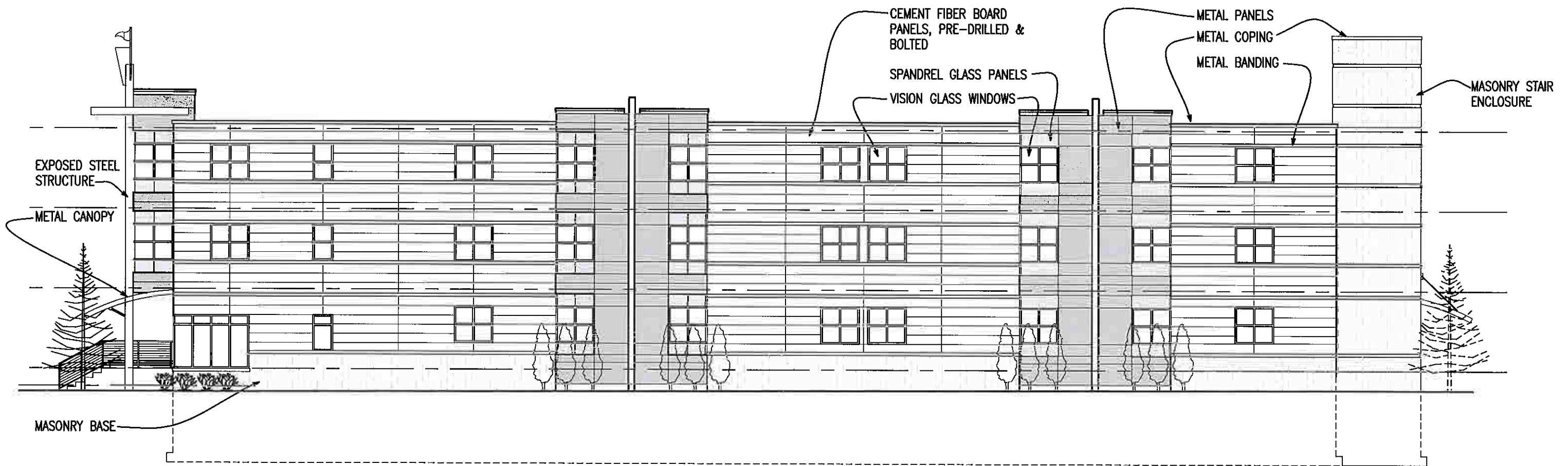
# 12th & HIGHLAND RENOVATION

Milwaukee, WI

T 414.220.9640  
 F 414.220.9595

P.O. BOX 510663  
 MILWAUKEE, WI 53203

**CONTINUUM**  
 ARCHITECTS + PLANNERS, S.C.



1 EXTERIOR ELEVATION - EAST  
 3/32" = 1'-0"

FILENAME

HEARTLAND HOUSING INC.

208 S. LaSalle Street, Ste. 1818  
 Chicago, IL 60604

PROJECT: 061001  
 DATE: DECEMBER 20, 2006

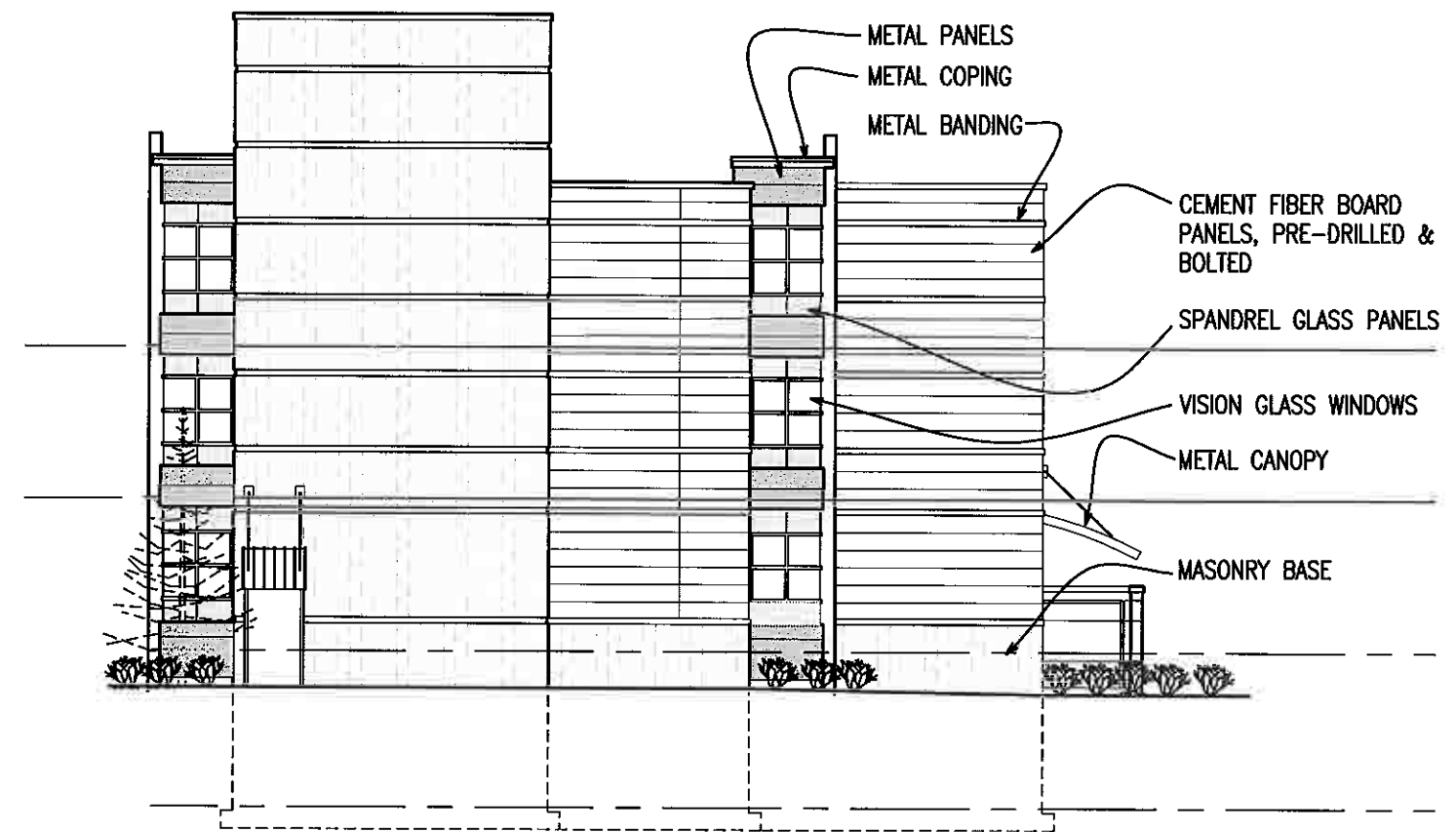
# 12th & HIGHLAND RENOVATION

Milwaukee, WI

T 414.220.9640  
 F 414.220.9595

P.O. BOX 510663  
 MILWAUKEE, WI 53203

**CONTINUUM**  
 ARCHITECTS + PLANNERS, S.C.



1 EXTERIOR ELEVATION - NORTH  
 3/32" = 1'-0"

FILENAME

HEARTLAND  
 HOUSING INC.

208 S. LaSalle Street, Ste. 1818  
 Chicago, IL 60604

PROJECT: 061001

DATE: DECEMBER 20, 2006

# 12th & HIGHLAND RENOVATION

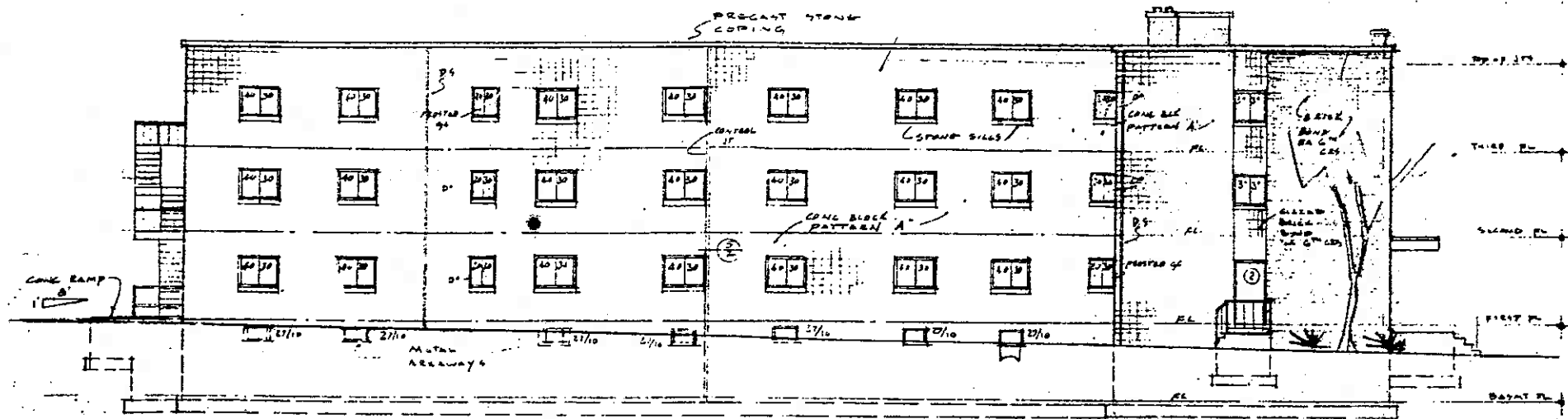
Milwaukee, WI

T 414.220.9640  
 F 414.220.9595

P.O. BOX 510663  
 MILWAUKEE, WI 53203

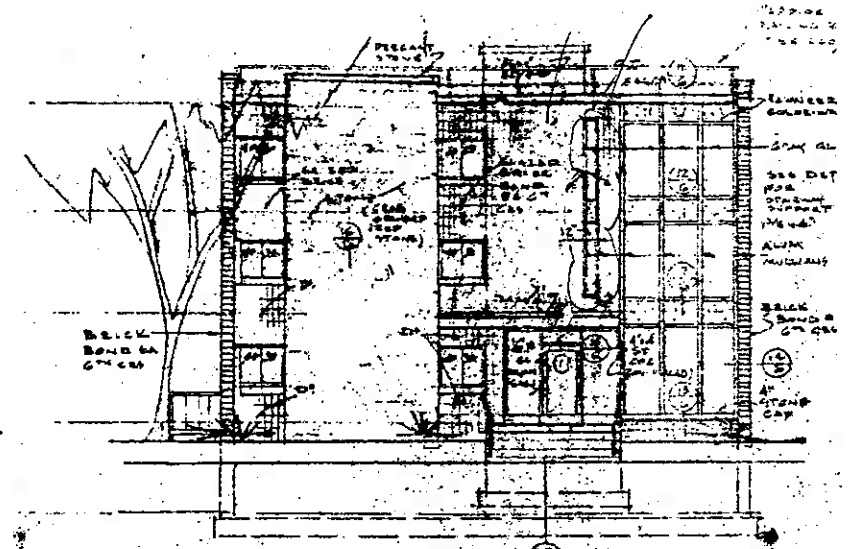
**CONTINUUM**  
 ARCHITECTS + PLANNERS, S.C.





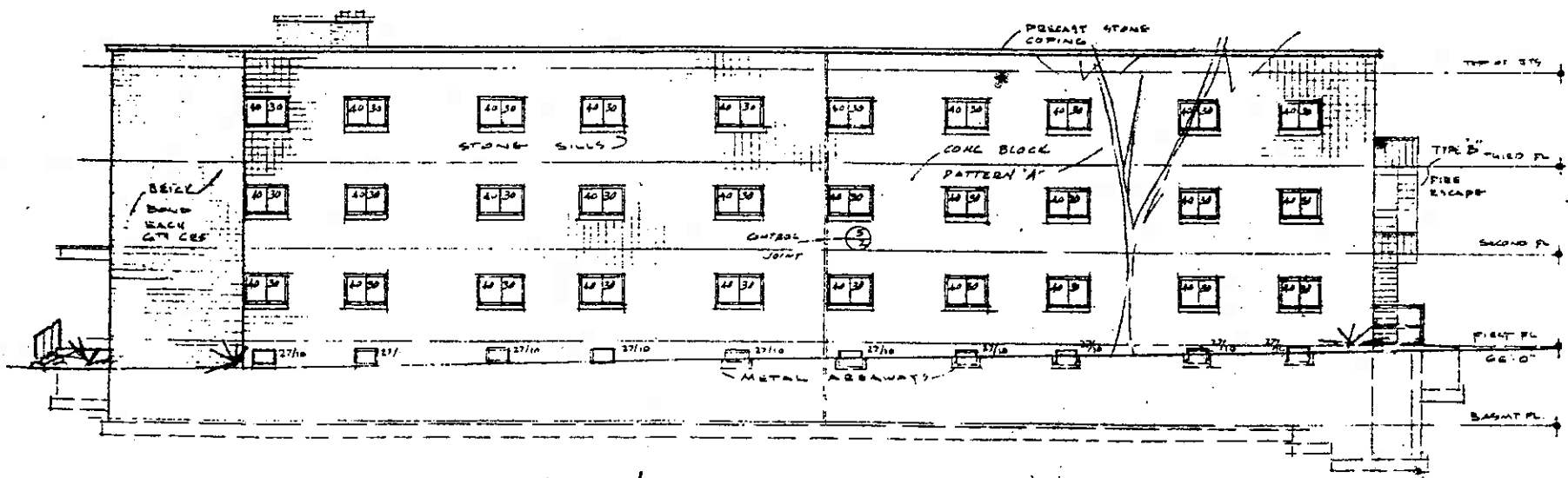
EXISTING WEST ELEVATION

SCALE 1/8" = 1'-0"



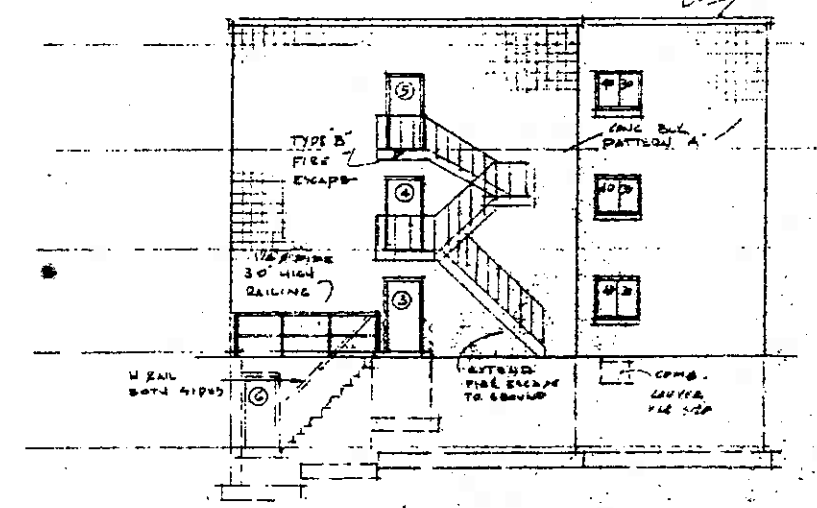
EXISTING SOUTH ELEVATION

SCALE 1/8" = 1'-0"



EXISTING EAST ELEVATION

SCALE 1/8" = 1'-0"



EXISTING NORTH ELEVATION

SCALE 1/8" = 1'-0"

HEARTLAND HOUSING INC.  
208 S. LaSalle Street, Ste. 1818  
Chicago, IL 60604

PROJECT: 061001  
DATE: DECEMBER 20, 2006

# 12th & HIGHLAND RENOVATION

Milwaukee, WI

T 414.220.9640  
F 414.220.9595

P.O. BOX 510663  
MILWAUKEE, WI 53203

**CONTINUUM**  
ARCHITECTS + PLANNERS, S.C.