



Certificate of Appropriateness

Milwaukee Historic Preservation Commission/200 E. Wells Street/Milwaukee, WI 53202/phone 414-286-5712/fax 414-286-3004

Property 2915 N. SHERMAN BL. Sherman Boulevard Historic District
Description of work Telecommunications antennas were installed on the roof the former Christian Science church building, some time ago. Current proposal is to update installation by removing some of equipment, installing 3 new Ahloas, 3 new Ahfigs and replacing 9 existing antennas with 6 new ones.
Date issued 11/3/2020 PTS ID 115047 Cell Antenna Installation

In accordance with the provisions of Section 320-21 (11) and (12) of the Milwaukee Code of Ordinances, the Milwaukee Historic Preservation Commission has issued a certificate of appropriateness for the work listed above. The work was found to be consistent with preservation guidelines. The following conditions apply to this certificate of appropriateness:

The new antennas will be position approximately at same locations as existing. The antennas will be painted to match the existing brick color and mounting hardware will go into mortar lines and not face of brick.

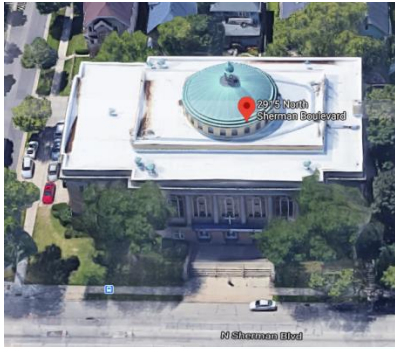
All work must be done in a craftsman-like manner, and must be completed within one year of the date this certificate was issued. Staff must approve any changes or additions to this certificate before work begins. Work that is not completed in accordance with this certificate may be subject to correction orders or citations. If you require technical assistance, please contact Carlen Hatala of the Historic Preservation staff as follows: Phone: (414) 286-5722 E-mail: carlen.hatala@milwaukee.gov.

If permits are required, you are responsible for obtaining them from the Milwaukee Development Center. If you have questions about permit requirements, please consult the Development Center's web site, www.milwaukee.gov/build, or call (414) 286-8210.

Carl Hatal

City of Milwaukee Historic Preservation Staff

Copies to: Development Center, Contractor

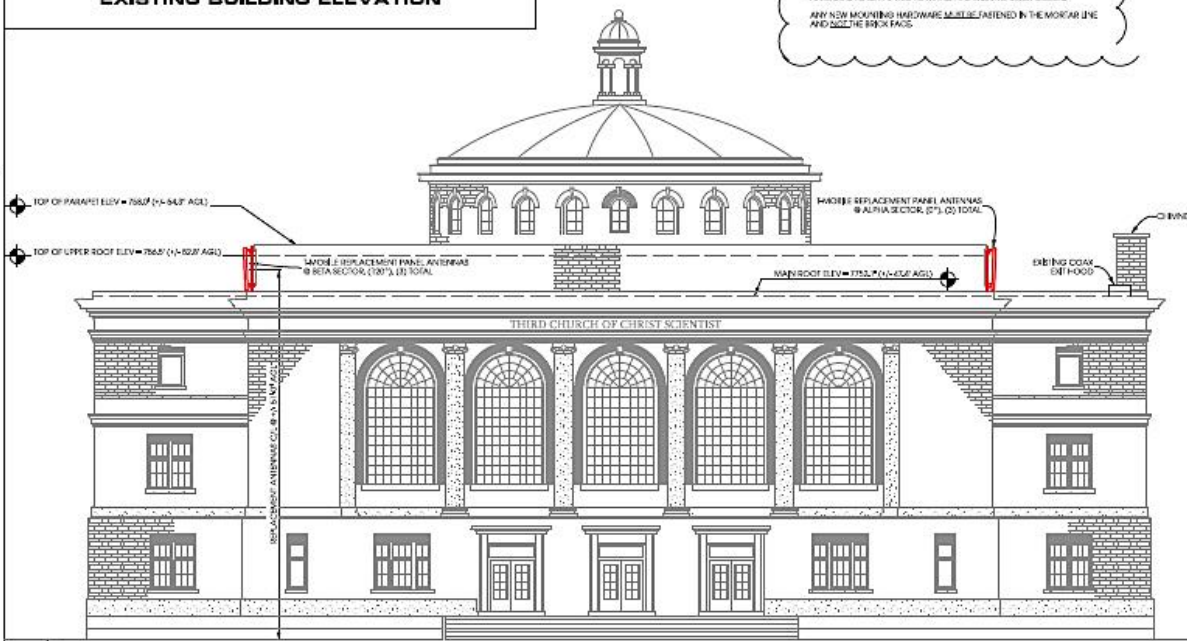


2915 North Sherman Boulevard. Originally a Christian Science Church. Later Schragger Auction Galleries. Now Smyrnakaren Baptist Church.



EXISTING BUILDING ELEVATION

ANTENNA PAINTING & MOUNTING NOTES
 REQUIREMENTS AS SPECULATED BY THE MISSISSIPPI PRESERVATION OFFICE.
 ANTENNAS TO BE PAINTED TO MATCH THE EXISTING BRICK COLOR.
 ANY NEW MOUNTING HARDWARE MUST BE FASTENED IN THE MORTAR LINE AND NOT THE BRICK FACE.



1
A-1

BUILDING ELEVATION (EAST ELEVATION)

SCALE: 1/4" = 1'-0" - 1/4" = 10'-0"
 22" x 34" - 1/4" = 8'-0"



EXISTING T-MOBILE ANTENNAS - ALPHA SECTOR -



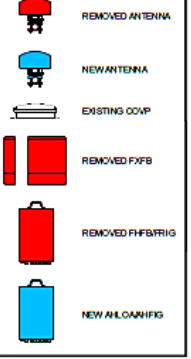
EXISTING T-MOBILE ANTENNAS - BETA SECTOR -



EXISTING T-MOBILE ANTENNAS - GAMMA SECTOR -

Removing some previous telecommunications equipment and installing new equipment.

LEGEND

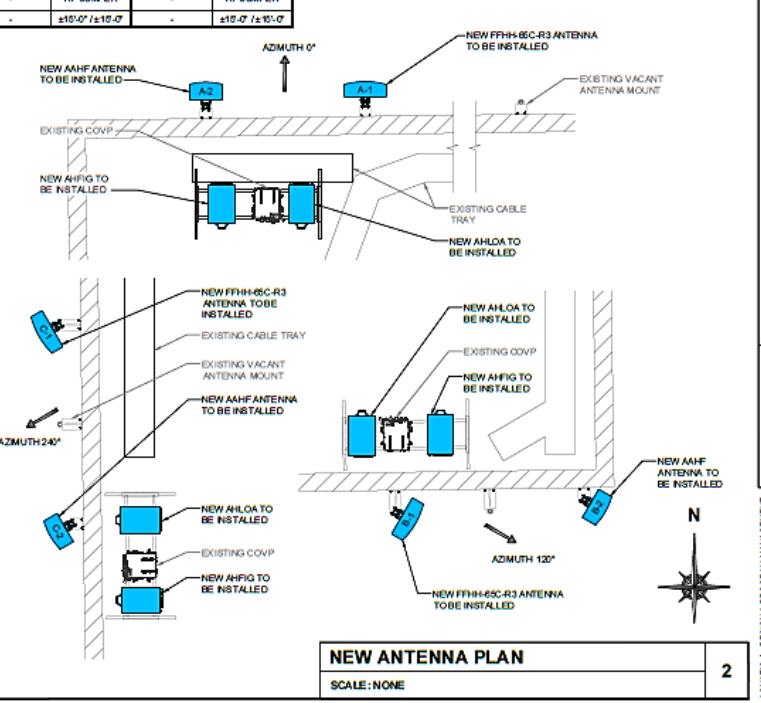
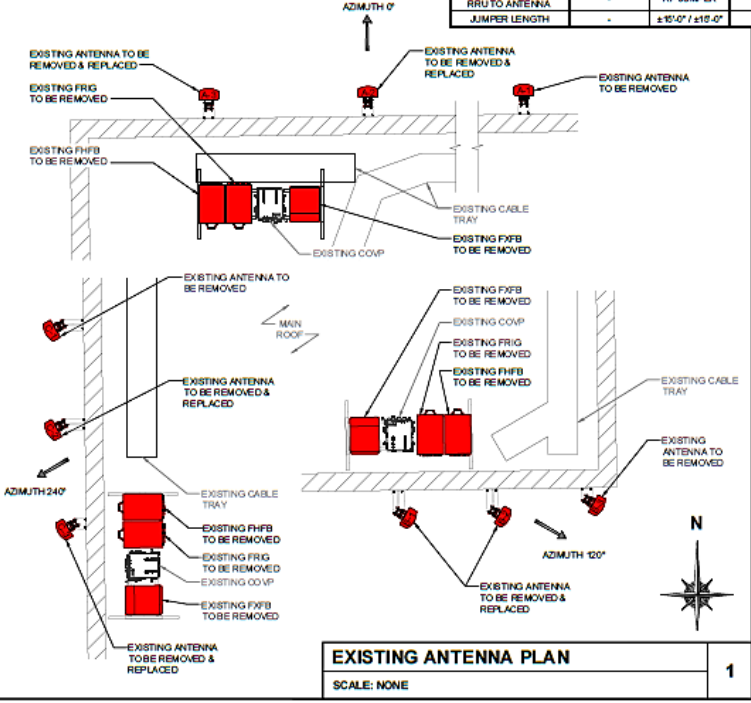


ANTENNA & CABLE SCHEDULE						
SECTOR	ALPHA		BETA		GAMMA	
LOCATION	A-2	A-1	B-2	B-1	C-2	C-1
TECHNOLOGY	LTE 5G B41	OSM/LTE/LIMITS PCS/LTE AWS-000N600	LTE 5G B41	OSM/LTE/LIMITS PCS/LTE AWS-000N600	LTE 5G B41	OSM/LTE-LIMITS PCS/LTE AWS-000N600
AZMUTH	0°		120°		240°	
RAD CENTER	±54.0°	±57.0°	±54.0°	±57.0°	±54.0°	±57.0°
COLOR CODING	RED	RED (1-8)	GREEN	GREEN (14)	BLUE	BLUE (1-8)
MODEL#	AAHF (ACTIVE ANTENNA MASSIVE MIMO)	COMMSCOPE FFH-65C-R3	AAHF (ACTIVE ANTENNA MASSIVE MIMO)	COMMSCOPE FFH-65C-R3	AAHF (ACTIVE ANTENNA MASSIVE MIMO)	COMMSCOPE FFH-65C-R3
MECHANICAL DOWNTILT	-	-	-	-	-	-
ELECTRICAL DOWNTILT	-	-	-	-	-	-
RRU TYPE	AAHF (INTEGRATED)	AHLOA AHFG	AAHF (INTEGRATED)	AHLOA AHFG	AAHF (INTEGRATED)	AHLOA AHFG
HCS DIA. & TYPE	-	EXISTING LOW CAP HCS	-	EXISTING LOW CAP HCS	-	EXISTING LOW CAP HCS
HCS ACTUAL LENGTH	-	-	-	-	-	-
HCS FACTORY LENGTH	-	±10'-0"	-	±17'-0"	-	±7'-0"
JUMPER TYPE FROM COVP/TO RRU	HCS 2.0 LONG JUMPER	HYBRID JUMPER	HCS 2.0 LONG JUMPER	HYBRID JUMPER	HCS 2.0 LONG JUMPER	HYBRID JUMPER
JUMPER LENGTH	±12'-0"	±15'-0" / ±18'-0"	±18'-0"	±15'-0" / ±18'-0"	±9'-0"	±18'-0" / ±15'-0"
JUMPER TYPE FROM RRU TO ANTENNA	-	RF JUMPER	-	RF JUMPER	-	RF JUMPER
JUMPER LENGTH	-	±15'-0" / ±18'-0"	-	±15'-0" / ±18'-0"	-	±18'-0" / ±15'-0"

NOTE
WATS SCOPE OF WORK DOES NOT INCLUDE A STRUCTURAL EVALUATION OF THIS TOWER OR STRUCTURE. NEW ANTENNAS AND EQUIPMENT SHOWN ON THIS PLAN HAVE NOT BEEN EVALUATED TO VERIFY THE TOWER OR STRUCTURE HAS THE CAPACITY TO ADEQUATELY SUPPORT THESE ANTENNAS. PRIOR TO ANY ANTENNA OR EQUIPMENT INSTALLATION, A STRUCTURAL EVALUATION OF THE TOWER OR STRUCTURE, INCLUDING ALL ANTENNA MOUNTING SYSTEMS & HARDWARE SHALL BE PERFORMED.

NOTE
ANTENNA INFORMATION OBTAINED FROM T-MOBILE RF DATA CONFIGURATION SHEET DATED 04/14/2020. CONTRACTOR TO OBTAIN THE MOST CURRENT RFDS FROM T-MOBILE PRIOR TO CONSTRUCTION

NOTE
CONTRACTOR TO REPLACE EXISTING ANTENNA MAST PIPE WITH NEW MAST PIPE TO ACCOMMODATE NEW ANTENNA

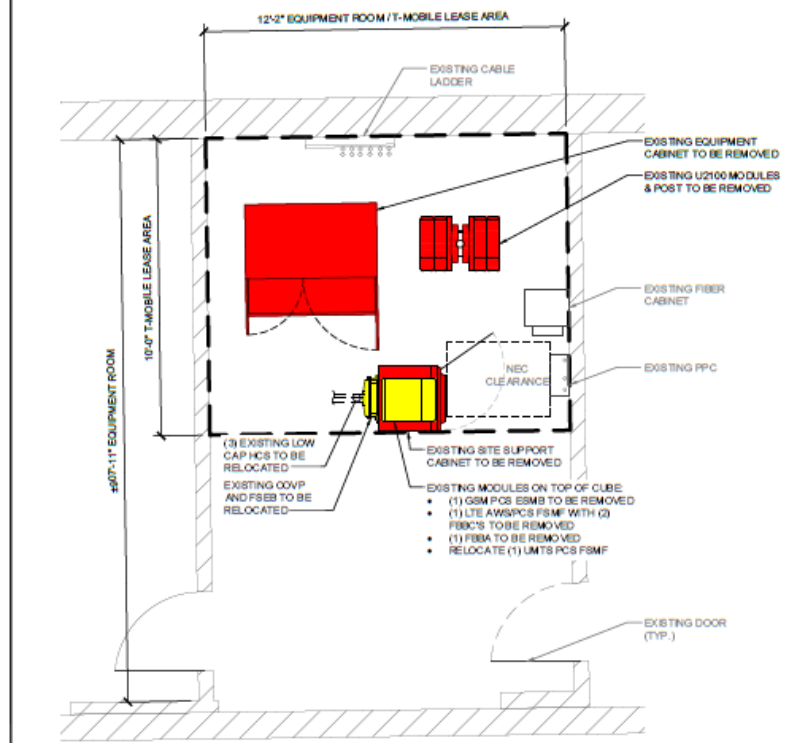


ANTENNA & CABLE SCHEDULE

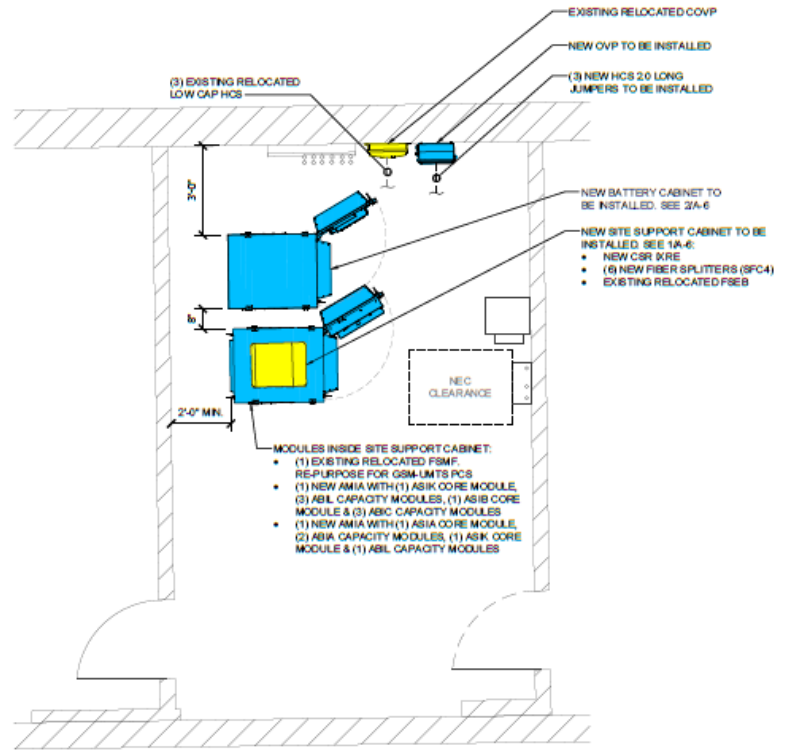
LEGEND

- EXISTING EQUIPMENT
- REMOVED EQUIPMENT
- RELOCATED EQUIPMENT
- NEW EQUIPMENT

NOTE:
CONTRACTOR TO FIELD VERIFY LOCATION
OF FYG GPS ANTENNA TO BE UTILIZED.



EXISTING SITE PLAN
SCALE: 1/4" = 1'-0"
1



NEW SITE PLAN
SCALE: 1/4" = 1'-0"
2