

St. James Episcopal Church

PROJECT

Milwaukee Wisconsin

SEAL

**St. James Episcopal
Church**

833 W. Wisconsin Avenue

J. Jeffers & Co.
225 E. Michigan St.
Suite 110
Milwaukee, WI 53202

PROJECT NUMBER 172783

DRAWINGS CONSULTANTS

ENGBERG ANDERSON

320 EAST BUFFALO STREET
SUITE 500
MILWAUKEE, WISCONSIN 53202
PH 414-944-9000
FX 414-944-9100

A000	SITE PLAN
A100	BASEMENT FLOOR PLAN
A110	FIRST FLOOR PLAN
A120	SECOND FLOOR PLAN
A400	ELEVATIONS
A401	ELEVATIONS
A450	BUILDING SECTIONS

ISSUED FOR:		
HPC		11-09-2017

REVISION FOR:		DATE
NO. DESCRIPTION		

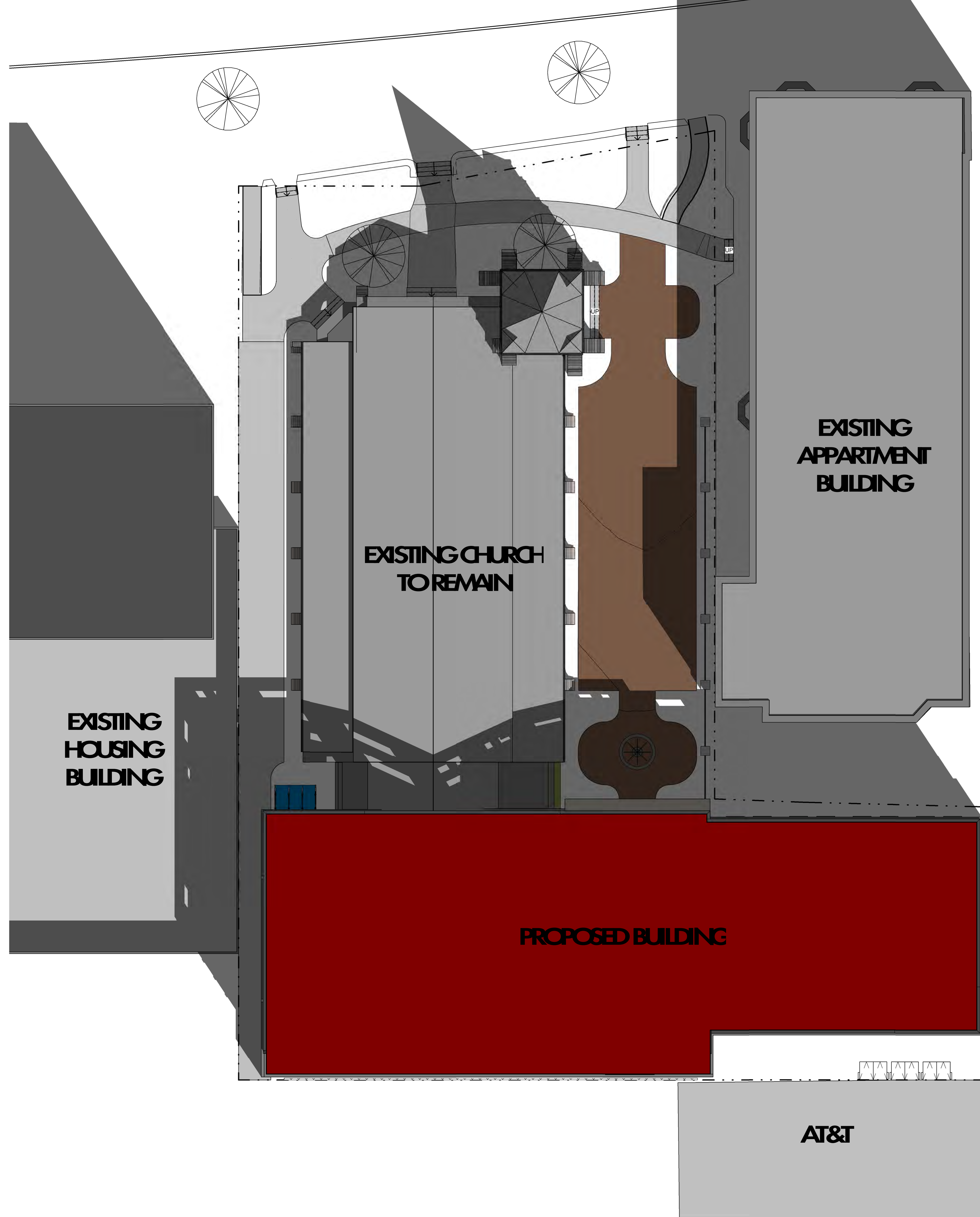
SITE LOCATION MAP



DRAWN BY		TL
CHECKED BY		JMR

TITLE SHEET

G100



**St. James Episcopal
Church**

833 W. Wisconsin Avenue

J. Jeffers & Co.
225 E. Michigan St.
Suite 110
Milwaukee, WI 53202

PROJECT NUMBER 172783

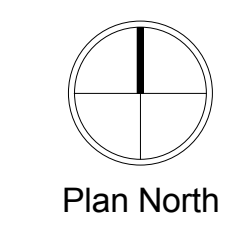
ISSUED FOR: HPC 11-09-2017

REVISION FOR:	DATE
NO. DESCRIPTION	

DRAWN BY Author
CHECKED BY Checker

SITE PLAN

1 SITE PLAN PV
SCALE: 1" = 10'-0"



**St. James Episcopal
Church**

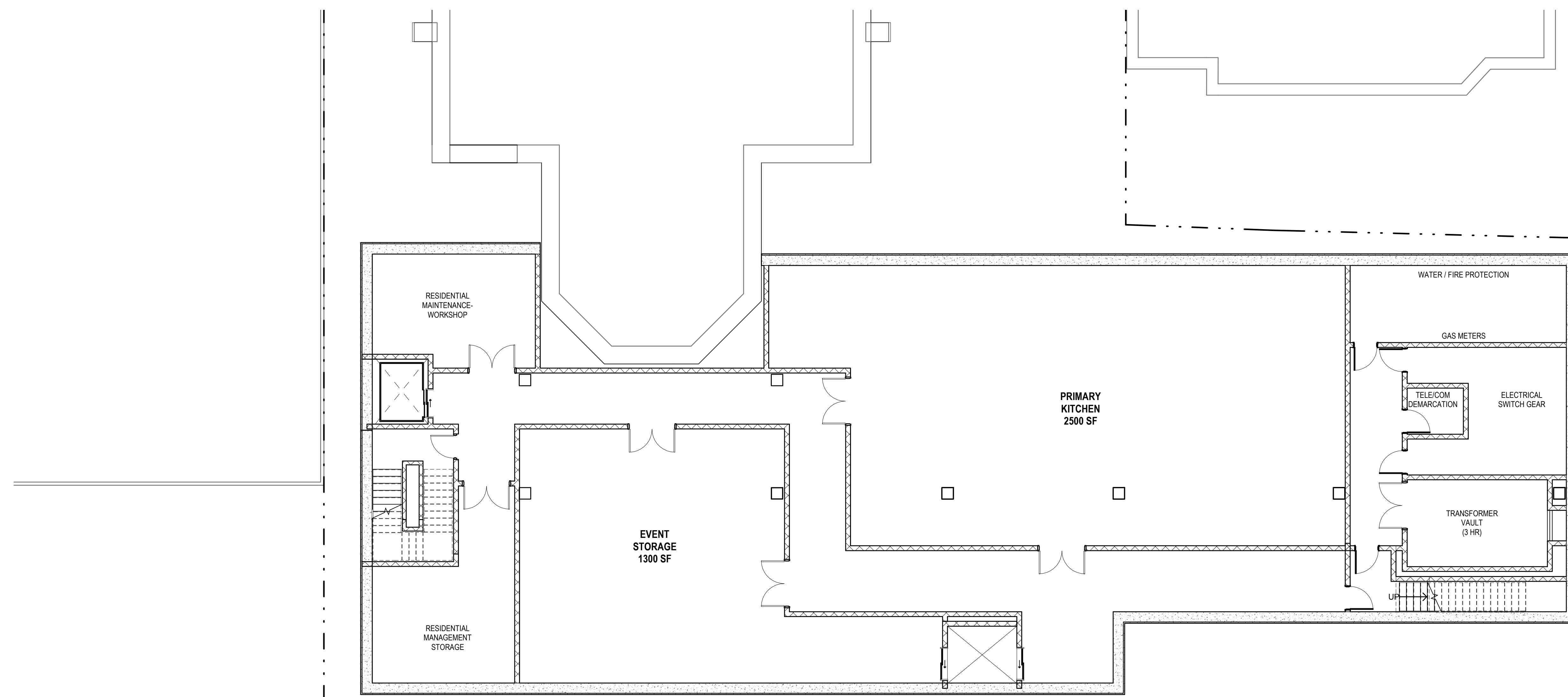
833 W. Wisconsin Avenue

J. Jeffers & Co.
225 E. Michigan St.
Suite 110
Milwaukee, WI 53202

PROJECT NUMBER 172783

ISSUED FOR: HPC 11-09-2017

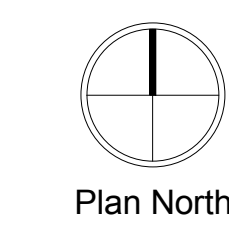
REVISION FOR: NO. DESCRIPTION DATE



DRAWN BY Author
CHECKED BY Checker

**BASEMENT FLOOR
PLAN**

1 BASEMENT PLAN PV
SCALE: 1/8" = 1'-0"



A100

**St. James Episcopal
Church**

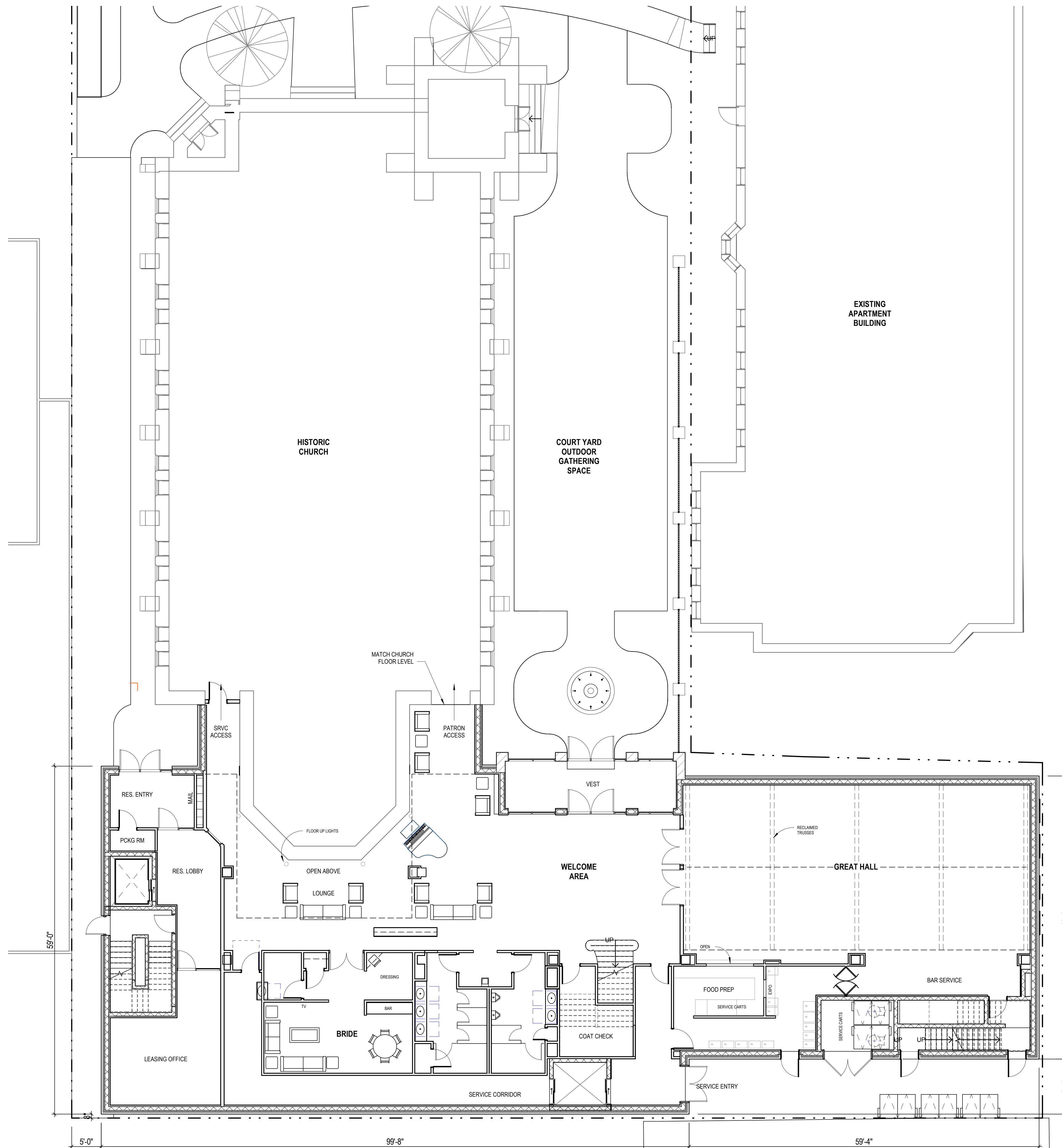
833 W. Wisconsin Avenue

J. Jeffers & Co.
225 E. Michigan St.
Suite 110
Milwaukee, WI 53202

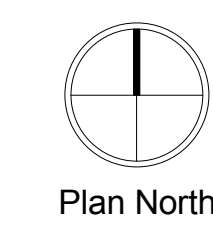
PROJECT NUMBER 172783

ISSUED FOR: HPC 11-09-2017

REVISION FOR: NO. DESCRIPTION DATE



1 LEVEL 1 PLAN - ADDITION
SCALE: 1/8" = 1'-0"



DRAWN BY TL
CHECKED BY JMR

FIRST FLOOR PLAN

A110

**St. James Episcopal
Church**

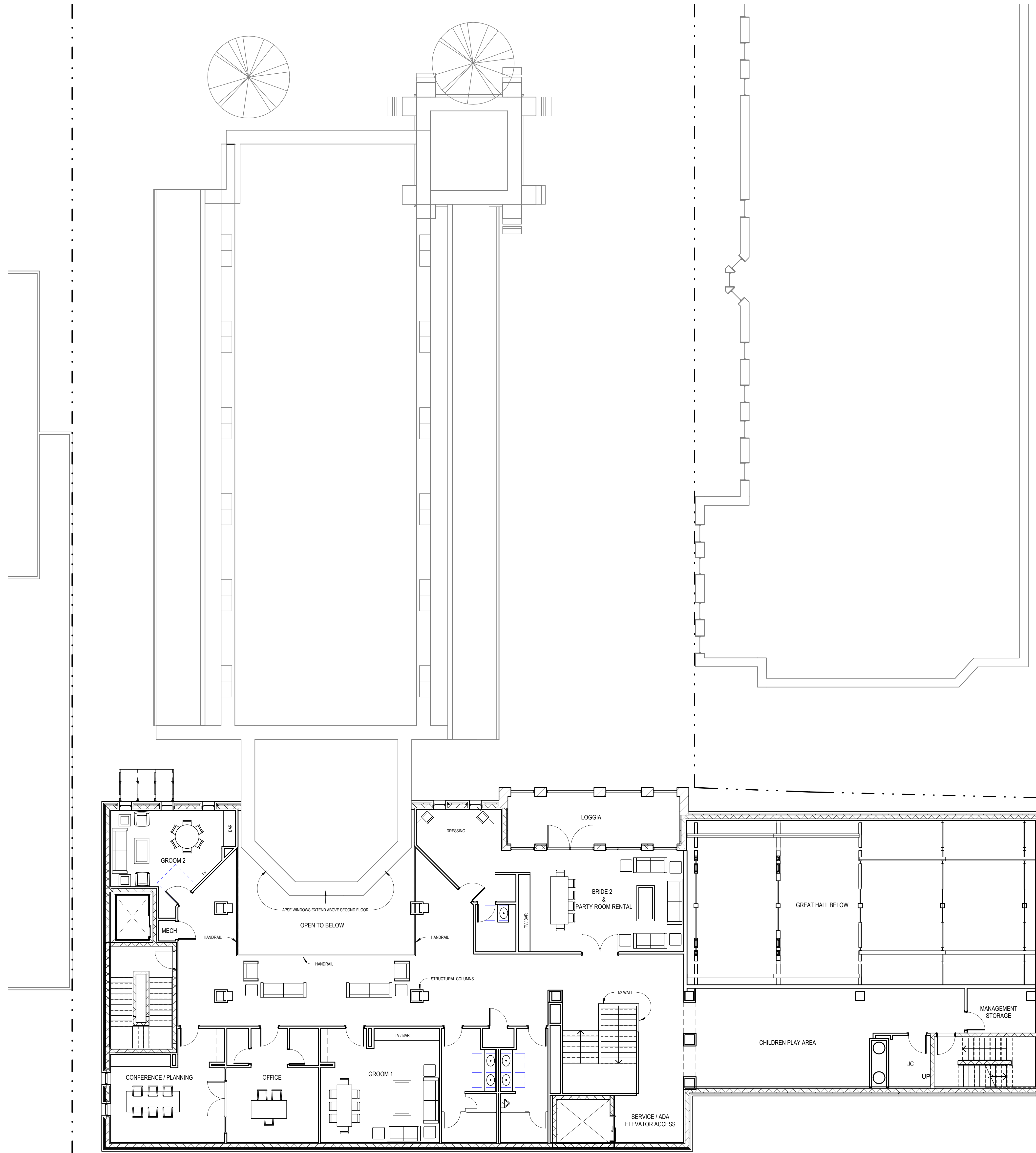
833 W. Wisconsin Avenue

J. Jeffers & Co.
225 E. Michigan St.
Suite 110
Milwaukee, WI 53202

PROJECT NUMBER 172783

ISSUED FOR: HPC 11-09-2017

REVISION FOR: NO. DESCRIPTION DATE

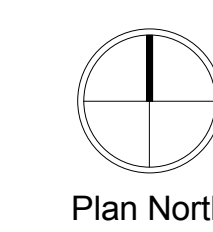


DRAWN BY Author

CHECKED BY Checker

**SECOND FLOOR
PLAN**

1 SECOND FLOOR PLAN
SCALE: 1/8" = 1'-0"



A120

**St. James Episcopal
Church**

833 W. Wisconsin Avenue

J. Jeffers & Co.
225 E. Michigan St.
Suite 110
Milwaukee, WI 53202

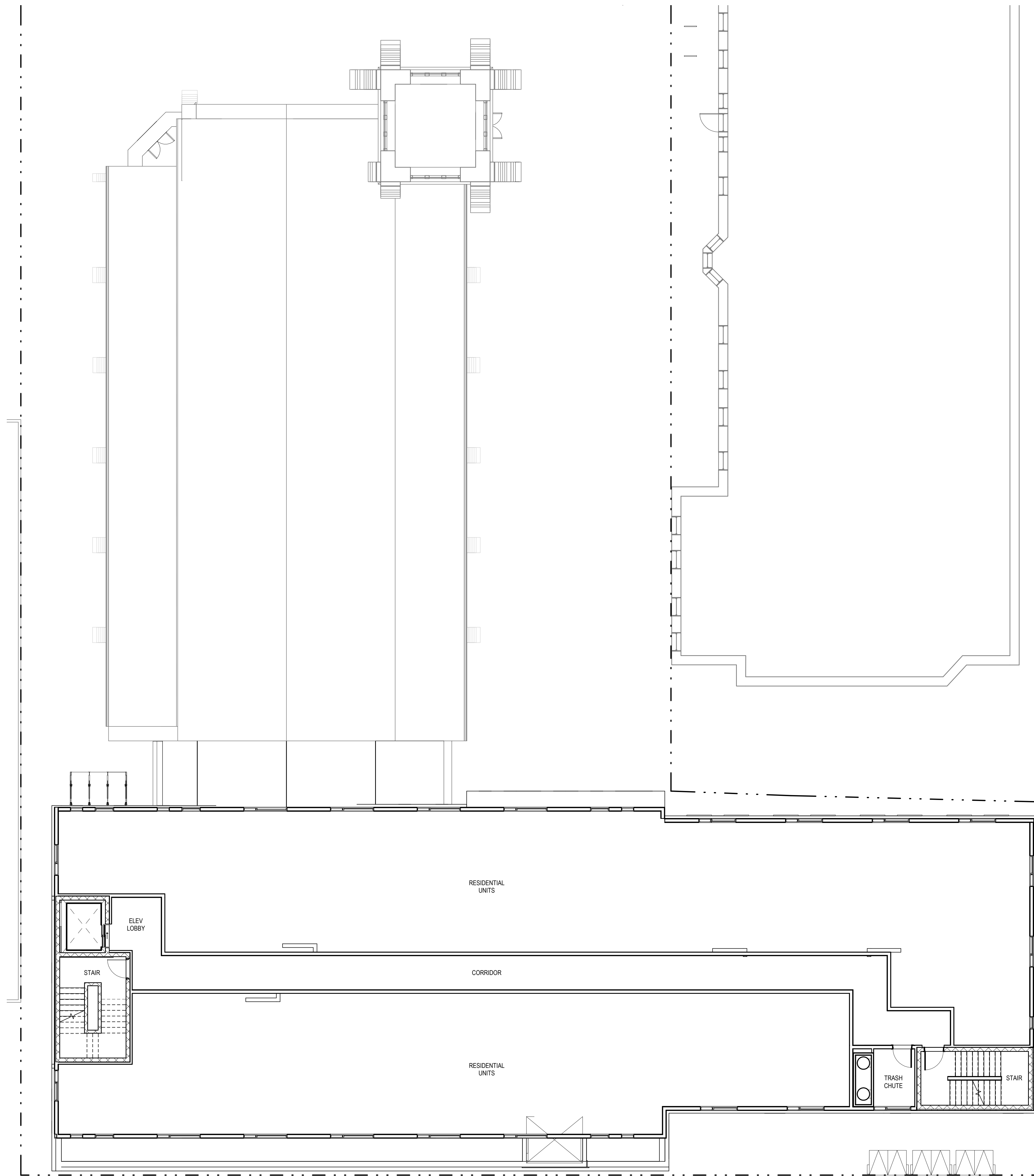
PROJECT NUMBER 172783

ISSUED FOR: HPC 11-09-2017

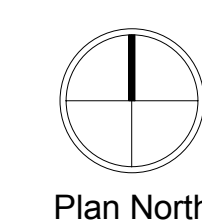
REVISION FOR: NO. DESCRIPTION DATE

DRAWN BY: MT
CHECKED BY: JMR

**THIRD - SEVENTH
FLOOR PLAN**



1 TYPICAL RESIDENTIAL FLOOR
SCALE: 1/8" = 1'-0"



St. James

833 W. Wisconsin Avenue

J. Jeffers & Co.
225 E. Michigan St.
Suite 110
Milwaukee, WI 53202

PROJECT NUMBER 172783

ISSUED FOR:	
DESCRIPTION	Issue Date

REVISION FOR:		
NO.	DESCRIPTION	DATE



DRAWN BY	Author
CHECKED BY	Checker

ELEVATIONS

St. James

833 W. Wisconsin Avenue

J. Jeffers & Co.
225 E. Michigan St.
Suite 110
Milwaukee, WI 53202

PROJECT NUMBER 172783

ISSUED FOR:	
DESCRIPTION	Issue Date

REVISION FOR:		
NO.	DESCRIPTION	DATE



DRAWN BY	Author
CHECKED BY	Checker

ELEVATIONS

**St. James Episcopal
Church**

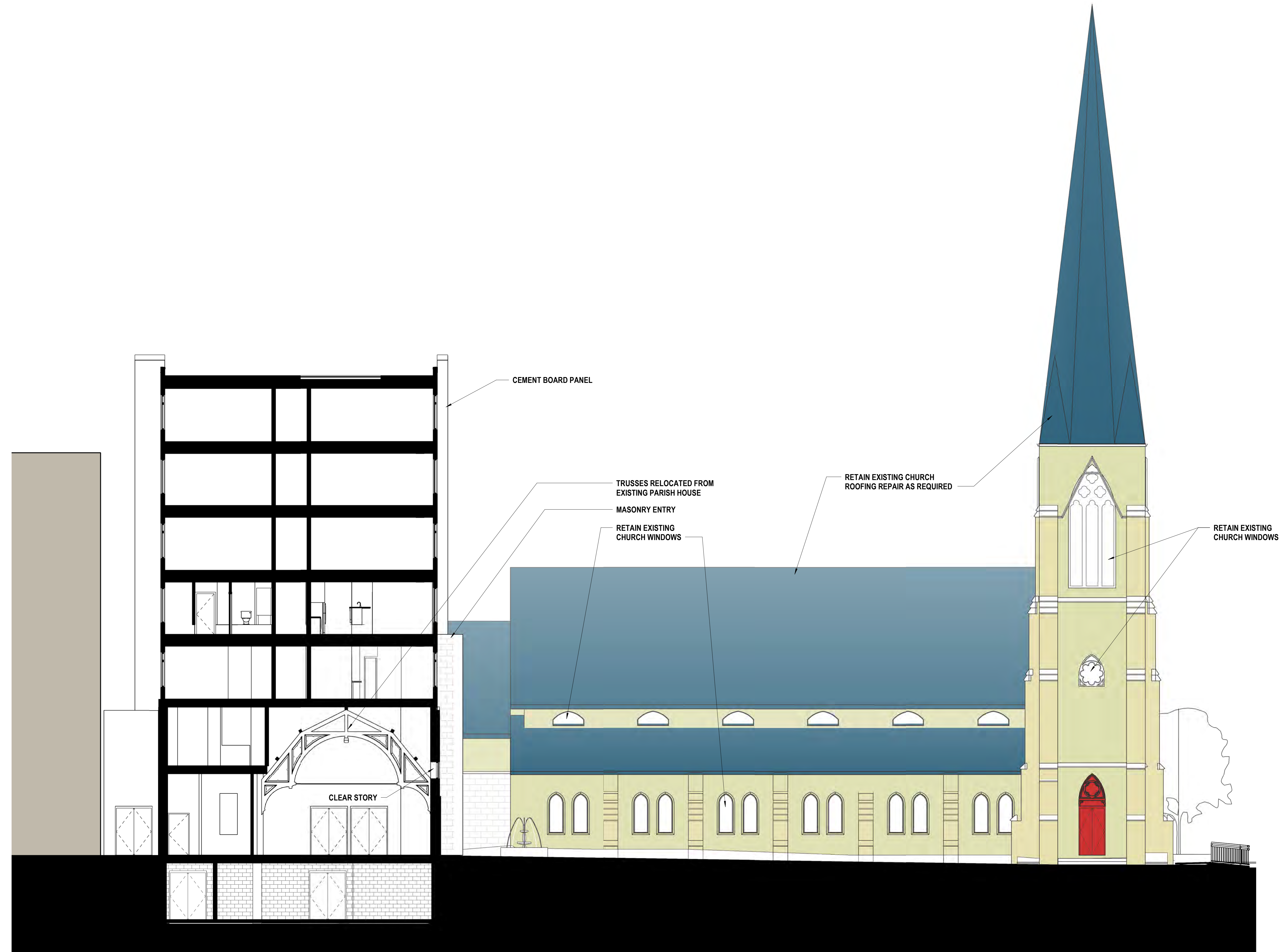
833 W. Wisconsin Avenue

J. Jeffers & Co.
225 E. Michigan St.
Suite 110
Milwaukee, WI 53202

PROJECT NUMBER 172783

ISSUED FOR: HPC 11-09-2017

REVISION FOR:	DATE
NO.	DESCRIPTION



DRAWN BY TL
CHECKED BY JMR

BUILDING SECTIONS

1 BUILDING SECTION LOOKING WEST
SCALE: 1/8" = 1'-0"