

City of
Milwaukee
Development Center

Customer Information

809 N. Broadway/PO Box 324/Milwaukee, WI 53201-0324/414-286-8211

Air or Subterranean Space Lease Petition

Submit this application with \$150 application fee to:
Milwaukee Development Center
Make check payable to City of Milwaukee.
Application fee is non-refundable.

Date June 4, 2009

TO THE HONORABLE, THE COMMON COUNCIL OF THE CITY OF MILWAUKEE:

The undersigned MillerCoors, LLC, a Delaware limited liability company,

(state whether petitioner is an individual, co-partnership, Wisconsin or foreign corporation)

respectfully petitions the Common Council of the City of Milwaukee, according to the provisions of Section 66.048(3) and (4) of the Wisconsin Statutes, that the following space lease be granted:

Subterranean Space Lease for existing Special Privilege (No. 427) structure consisting of an underground tunnel

approximately 6 feet wide and 6 feet high, the center line of said tunnel being 190 feet, 6 inches south of the center line of West State Street

of which building plans, plot plans and descriptive data showing the elevations, locations, height and size of the proposed structure and its relationship to adjoining buildings are herewith submitted.

The petitioners are the owners in fee of the following described real property:

MillerCoors, LLC owns the property on the east and west sides of North 41st Street from State Street to Bluemound Road including Lot 1, Block 4 and Lot 8, Block 2 in Assessor's Plat No. 124 being a part of the NW one-quarter of Section 25 Township 7 North Range 21 East

also known by street and number as 4001 West Street Street (Bldg. 19) and 4103 West State Street (Bldg. 23) which property is located on both sides of that portion of the (street, ~~the~~XXXXXXXXXXXX) to be so leased.

This petition is subject to such terms and conditions as may be agreed up on between the City of Milwaukee and the petitioner, which terms and conditions shall be set forth in a written lease pursuant to Section 66.048(3) and (4), Wisconsin Statutes. The leasing of such space shall be subject to a determination by the Common Council of the City of Milwaukee that such space is not needed for street, alley or other public purpose and that the public interest will be served by such leasing, and upon such determination as shall be authorized by ordinance duly passed by the City of Milwaukee.

Signature Brian C. Randall Brian C. Randall, Agent

Address 330 East Kilbourn Avenue, Suite 1250 (53202)

Phone (414) 271-0130

Corporation, firm or society MillerCoors, LLC

Address 3939 West Highland Boulevard (53208)

Title or office held in same Authorized Agent and Attorney-in-Fact

SUBSURFACE EASEMENT EXHIBIT TUNNEL BELOW NORTH 41ST STREET

Situated in North 41st street, in the City of Milwaukee, Milwaukee County, Wisconsin.

A subsurface easement across North 41st street, being a part of the Southwest 1/4 of the Northwest 1/4 of Section 25, Town 7 North, Range 21 East, in the City of Milwaukee, Milwaukee County, Wisconsin, bounded and described as follows.

Commencing at the intersection of the present East line of North 41st street and the present South line of West State street; thence South 01°15'32" East along the Easterly right of way line of North 41st street 193.69 feet to the point of beginning of lands to be described; thence continuing South 01°15'32" East along said Easterly line 10.00 feet to a point; thence South 85°43'30" West 60.08 feet to a point on the Westerly line of North 41st street; thence North 01°15'32" West along said Westerly line 10.00 feet to a point; thence North 85°43'30" East 60.08 feet to the point of beginning.

Containing 600 sq.ft. (0.014 acres).

February 19, 2009

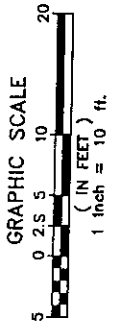
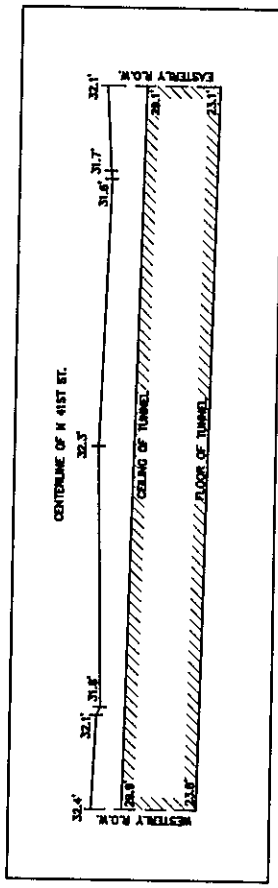
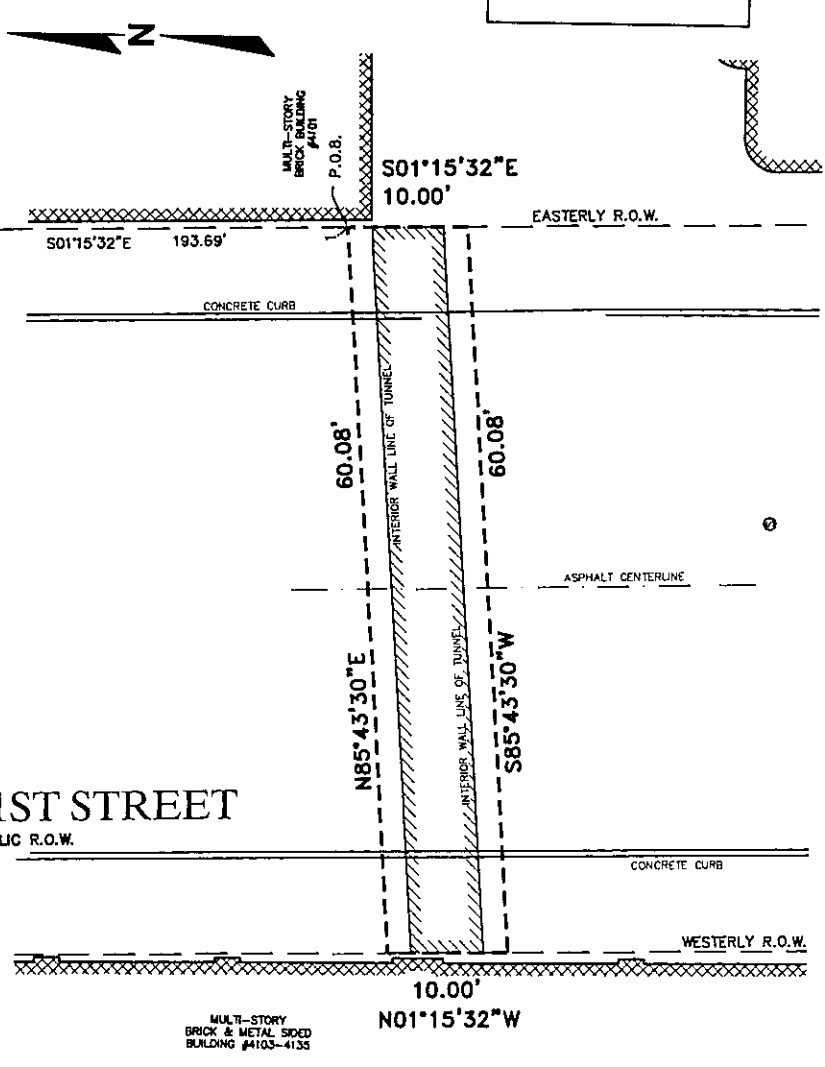
Miller Coors

Survey no. 163997-ajm

Notes:
Elevations are based on the City of Milwaukee datum

W. STATE ST.
65' PUBLIC R.O.W.

NORTH 41ST STREET
60' PUBLIC R.O.W.



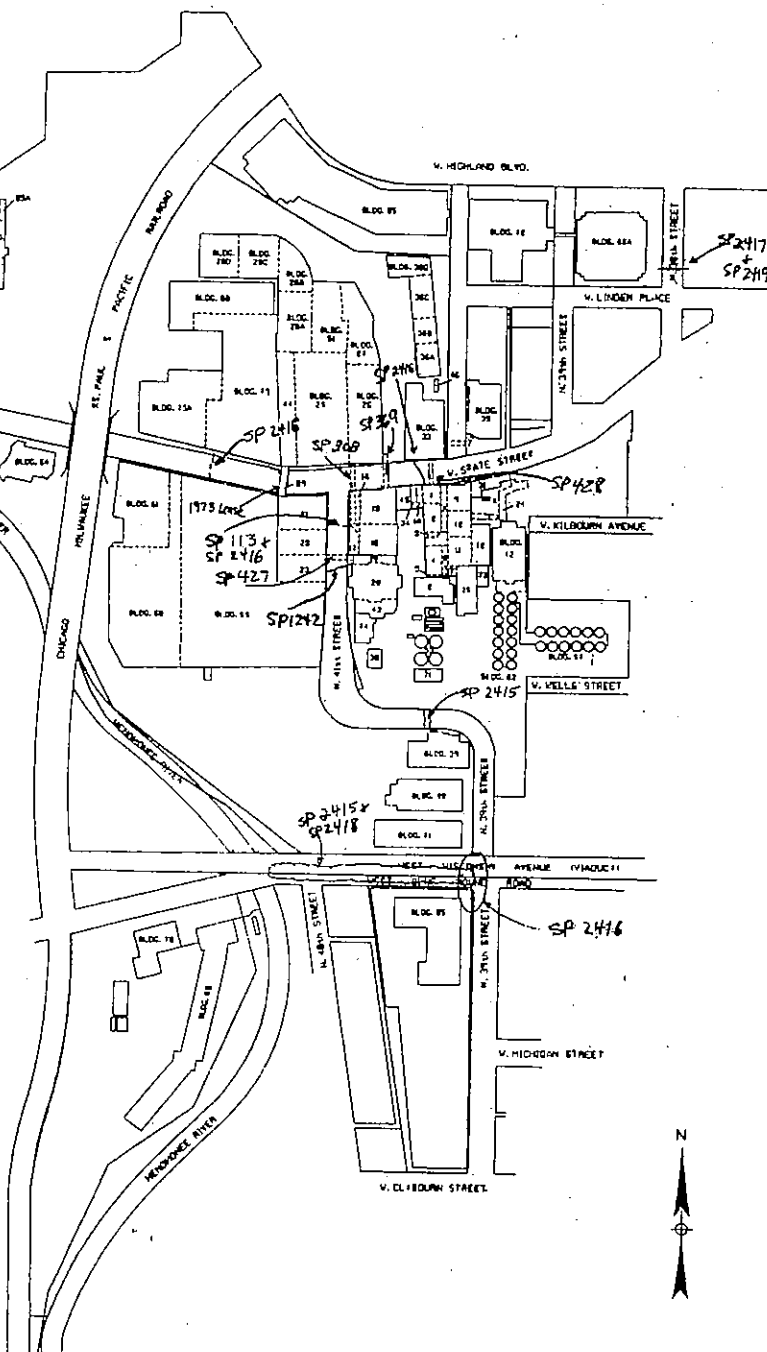
R.A. Smith National, Inc.
*Beyond Surveying
and Engineering*

16745 W. Bluemound Road, Brookfield WI 53005
262-781-1000 Fax 262-797-7373
www.rasmithnational.com
S:5163997&v.d
EX0000.dwg EX101016

SHEET 1 OF 1

(Existing SP 427)

BUILDING LEGEND	
1	BREWING ROOM AND CHILLER BLDG.
2	ENGINE ROOM
3	ENGINE ROOM
4	ENGINE ROOM
5	ENGINE ROOM
6	ENGINE ROOM
7	ENGINE ROOM
8	ENGINE ROOM
9	ENGINE ROOM
10	ENGINE ROOM
11	ENGINE ROOM
12	ENGINE ROOM
13	ENGINE ROOM
14	ENGINE ROOM
15	ENGINE ROOM
16	ENGINE ROOM
17	ENGINE ROOM
18	ENGINE ROOM
19	ENGINE ROOM
20	ENGINE ROOM
21	ENGINE ROOM
22	ENGINE ROOM
23	ENGINE ROOM
24	ENGINE ROOM
25	ENGINE ROOM
26	ENGINE ROOM
27	ENGINE ROOM
28	ENGINE ROOM
29	ENGINE ROOM
30	ENGINE ROOM
31	ENGINE ROOM
32	ENGINE ROOM
33	ENGINE ROOM
34	ENGINE ROOM
35	ENGINE ROOM
36	ENGINE ROOM
37	ENGINE ROOM
38	ENGINE ROOM
39	ENGINE ROOM
40	ENGINE ROOM
41	ENGINE ROOM
42	ENGINE ROOM
43	ENGINE ROOM
44	ENGINE ROOM
45	ENGINE ROOM
46	ENGINE ROOM
47	ENGINE ROOM
48	ENGINE ROOM
49	ENGINE ROOM
50	ENGINE ROOM
51	ENGINE ROOM
52	ENGINE ROOM
53	ENGINE ROOM
54	ENGINE ROOM
55	ENGINE ROOM
56	ENGINE ROOM
57	ENGINE ROOM
58	ENGINE ROOM
59	ENGINE ROOM
60	ENGINE ROOM
61	ENGINE ROOM
62	ENGINE ROOM
63	ENGINE ROOM
64	ENGINE ROOM
65	ENGINE ROOM
66	ENGINE ROOM
67	ENGINE ROOM
68	ENGINE ROOM
69	ENGINE ROOM
70	ENGINE ROOM
71	ENGINE ROOM
72	ENGINE ROOM
73	ENGINE ROOM
74	ENGINE ROOM
75	ENGINE ROOM
76	ENGINE ROOM
77	ENGINE ROOM
78	ENGINE ROOM
79	ENGINE ROOM
80	ENGINE ROOM
81	ENGINE ROOM
82	ENGINE ROOM
83	ENGINE ROOM
84	ENGINE ROOM
85	ENGINE ROOM
86	ENGINE ROOM
87	ENGINE ROOM
88	ENGINE ROOM
89	ENGINE ROOM
90	ENGINE ROOM
91	ENGINE ROOM
92	ENGINE ROOM
93	ENGINE ROOM
94	ENGINE ROOM
95	ENGINE ROOM
96	ENGINE ROOM
97	ENGINE ROOM
98	ENGINE ROOM
99	ENGINE ROOM
100	ENGINE ROOM
101	ENGINE ROOM
102	ENGINE ROOM
103	ENGINE ROOM
104	ENGINE ROOM
105	ENGINE ROOM
106	ENGINE ROOM
107	ENGINE ROOM
108	ENGINE ROOM
109	ENGINE ROOM
110	ENGINE ROOM
111	ENGINE ROOM
112	ENGINE ROOM
113	ENGINE ROOM
114	ENGINE ROOM
115	ENGINE ROOM
116	ENGINE ROOM
117	ENGINE ROOM
118	ENGINE ROOM
119	ENGINE ROOM
120	ENGINE ROOM
121	ENGINE ROOM
122	ENGINE ROOM
123	ENGINE ROOM
124	ENGINE ROOM
125	ENGINE ROOM
126	ENGINE ROOM
127	ENGINE ROOM
128	ENGINE ROOM
129	ENGINE ROOM
130	ENGINE ROOM
131	ENGINE ROOM
132	ENGINE ROOM
133	ENGINE ROOM
134	ENGINE ROOM
135	ENGINE ROOM
136	ENGINE ROOM
137	ENGINE ROOM
138	ENGINE ROOM
139	ENGINE ROOM
140	ENGINE ROOM
141	ENGINE ROOM
142	ENGINE ROOM
143	ENGINE ROOM
144	ENGINE ROOM
145	ENGINE ROOM
146	ENGINE ROOM
147	ENGINE ROOM
148	ENGINE ROOM
149	ENGINE ROOM
150	ENGINE ROOM
151	ENGINE ROOM
152	ENGINE ROOM
153	ENGINE ROOM
154	ENGINE ROOM
155	ENGINE ROOM
156	ENGINE ROOM
157	ENGINE ROOM
158	ENGINE ROOM
159	ENGINE ROOM
160	ENGINE ROOM
161	ENGINE ROOM
162	ENGINE ROOM
163	ENGINE ROOM
164	ENGINE ROOM
165	ENGINE ROOM
166	ENGINE ROOM
167	ENGINE ROOM
168	ENGINE ROOM
169	ENGINE ROOM
170	ENGINE ROOM
171	ENGINE ROOM
172	ENGINE ROOM
173	ENGINE ROOM
174	ENGINE ROOM
175	ENGINE ROOM
176	ENGINE ROOM
177	ENGINE ROOM
178	ENGINE ROOM
179	ENGINE ROOM
180	ENGINE ROOM
181	ENGINE ROOM
182	ENGINE ROOM
183	ENGINE ROOM
184	ENGINE ROOM
185	ENGINE ROOM
186	ENGINE ROOM
187	ENGINE ROOM
188	ENGINE ROOM
189	ENGINE ROOM
190	ENGINE ROOM
191	ENGINE ROOM
192	ENGINE ROOM
193	ENGINE ROOM
194	ENGINE ROOM
195	ENGINE ROOM
196	ENGINE ROOM
197	ENGINE ROOM
198	ENGINE ROOM
199	ENGINE ROOM
200	ENGINE ROOM



MILLER BREWING COMPANY
MILWAUKEE PLANT
FACILITY LAYOUT



DATE: JUNE 28, 1968



SP 427