

# STUDIO **dwell** ARCHITECTS

PROFILE

MEDIA

CONTACT

PROJECTS



AIA CHICAGO 2005 DESIGN EXCELLENCE AWARDS  
+ 915 North Wolfcott



2008 BUILDER'S CHOICE AWARDS  
2010-04 West Race



AIA SEATTLE 2006 DESIGN EXCELLENCE AWARDS  
+ 156 West Superior



NATIONAL AIA 2007 DESIGN EXCELLENCE AWARDS  
+ 156 W Superior



Residential Architect Magazine AWARD

+ 1746 N Winchester



Residential Kitchen Award  
+ 1746 N Winchester

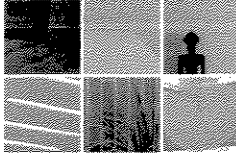


projects by location



STUDIO DWELL ARCHITECTS 1732 West Hubbard Street #18 Chicago, IL 60622 O.312.666-4601 F.312.666-4602 [studiodwell.com](http://studiodwell.com)





- powder      family
- kitchen    mud room
- foyer       terrace
- open below    living
- garage

**2041 West Cortland, Chicago**  
residence, single-family  
2004

Photos by Maity Peters.

material palette

groundface masonry - limestone  
concrete - natural  
aluminum windows - anodized  
cedar - chest

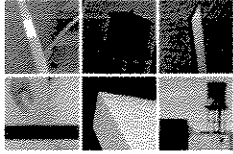


single family

- 915 north wolcott
- 1843 north paulina
- 2321-5 west arto
- 2041 west cortland
- 2010-4 west face
- 1748 north winchester
- michigan vacation home
- 1615-23 north wolcott
- 3701 south paulina
- 2223-5 west face

multi family

- 1024 west fry
- 834 west montrose
- 154 west hubbard
- 1721 north sheffield
- 1750 north chybourn
- 156 west superior
- 2154-57 west division
- 1919 west crystal
- 155 north aberdeen
- 1711 west division



powder	family
kitchen	dining
foyer	terrace
garage	living

**2321-5 West Erie, Chicago**  
residential, three single family units  
2006

Photos by Marty Pates & Virgil Abloh

**material palette**

brick - light gray  
marine board -  
natural, light brown and dark brown  
concrete - natural



**single family**

915 north walcott  
1843 north paulina  
2321-5 west erie  
2041 west portland  
2010-4 west race  
1748 north winchester  
michigan vacation home  
1615-23 north walcott  
3701 south parker  
2223-5 west race

**multi family**

1024 west fry  
834 west montrose  
154 west hubbard  
1721 north sheffield  
1750 north clayburn  
156 west superior  
2154-57 west division  
1919 west crystal  
155 north aberdeen  
1711 west division

- garage      elevator
- kitchen    dining
- terrace    family
- living      powder

**1615-23 Wolcott, Chicago**

residential, single-family  
four 4 story homes  
2007

Rendering by Young HJ

material palette

ground face masonry - limestone  
cedar - stained  
concrete - natural  
metal siding - gray  
alum. window - clear anodized



single family

- 915 north wolcott
- 1843 north paulina
- 2321-5 west ene
- 2041 west collins
- 2010-4 west lake
- 1748 north winchester
- michigan vacation home
- 1615-23 north wolcott
- 3701 south paulina
- 2223-5 west lake

multi family

- 1024 west try
- 834 west montrose
- 154 west hubbard
- 1721 north sheffield
- 1750 north clybourn
- 156 west superior
- 2154-57 west division
- 1919 west crystal
- 155 north abeideen
- 1711 west division



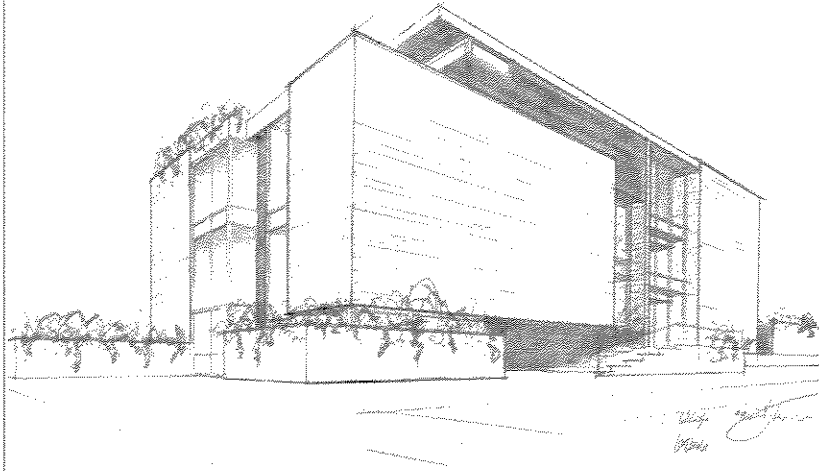
- bath      courtyard
- guest room      elevator
- garage      closet
- study      foyer

**3701 S. Parnell, Chicago**  
residence, single-family  
2007

Sketch by Mark Peters.

**material palette**

groundface masonry - chocolate  
cedar - stained brown  
metal panels - clear anodized  
concrete - natural  
aluminum windows - clear anodized



**single family**

- 916 north welcott
- 1843 north paulina
- 2321-5 west ave
- 2041 west cottland
- 2010-4 west taze
- 1748 north winchester
- michigan vacation home
- 1615-23 north welcott
- 3701 south parnell
- 2223-5 west taze

**multi family**

- 1024 west fry
- 834 west montrose
- 154 west hubbard
- 1721 north sheffield
- 1750 north clybourn
- 156 west superior
- 2154-57 west division
- 1919 west crystal
- 155 north aberdeen
- 1711 west division