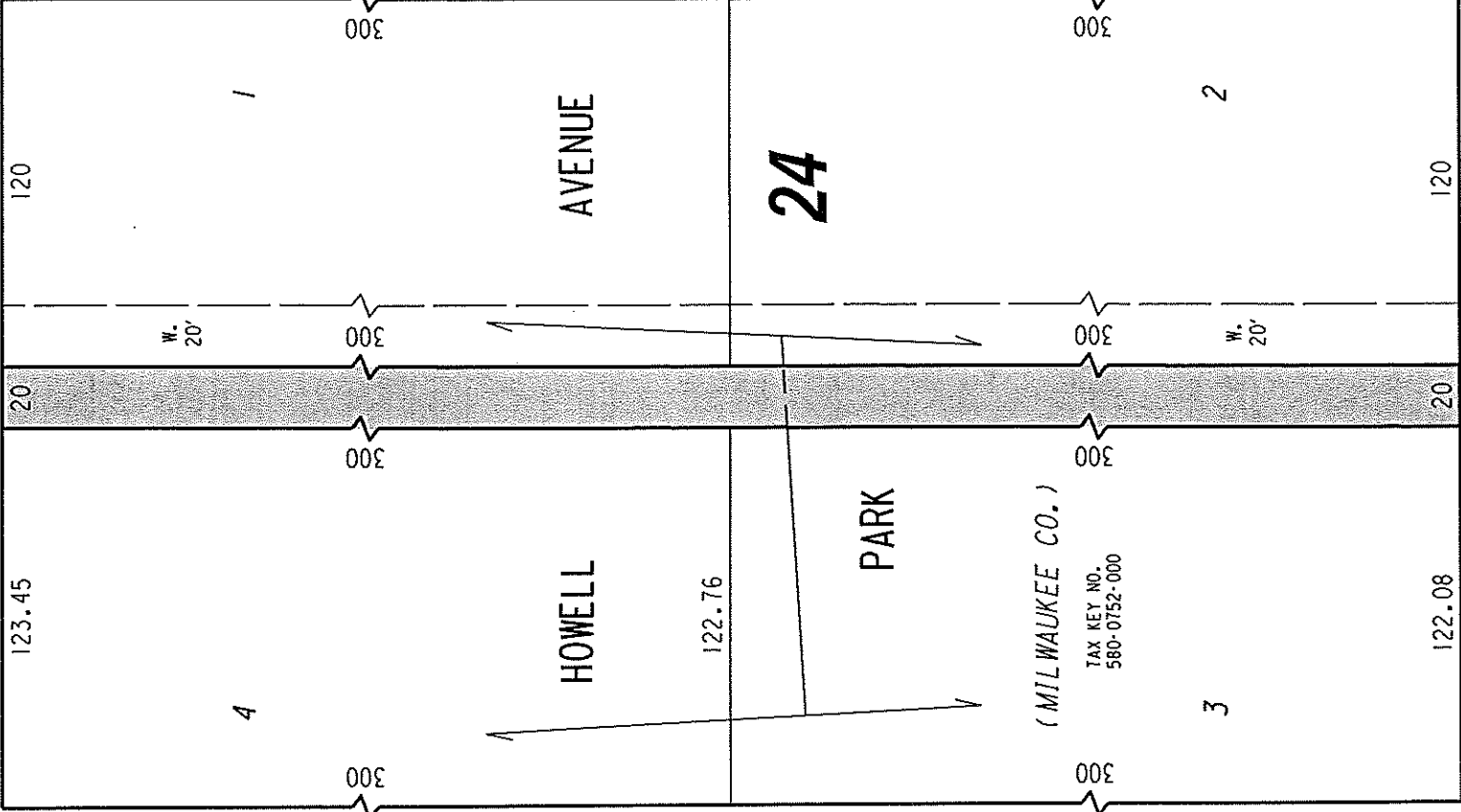


580

N.E. 1/4 SEC. 20, T.6N., R.22E.

W. Waterford Ave.
(60' R.O.W.)



S. 6th St.

(88' R.O.W.)
1/4 SEC. LINE

(60' R.O.W.)

S. 5th Pl.

W. Plainfield Ave.
(60' R.O.W.)

UNIMPROVED PUBLIC
ALLEY PROPOSED
TO BE VACATED

EXHIBIT "A"
FILE NO. 111610
INFRASTRUCTURE SERVICES DIVISION
MILWAUKEE, WISCONSIN

ASSIGNED TO: W.E. FUCHS

CH'K'D. BY: W.E. FUCHS

DRAWN BY: W.E.F.

DATE: APRIL 20, 2012

PROJECT/GRANT NO.: WK52337321

SCALE: 1" = 60'

APPROVED BY:

13TH ALDERMANIC DISTRICT
ALD. TERRY L. WITKOWSKI

Marcia Cornell
CENTRAL DRAFTING & RECORDS MANAGER

W.E. Fuchs
CITY ENGINEER