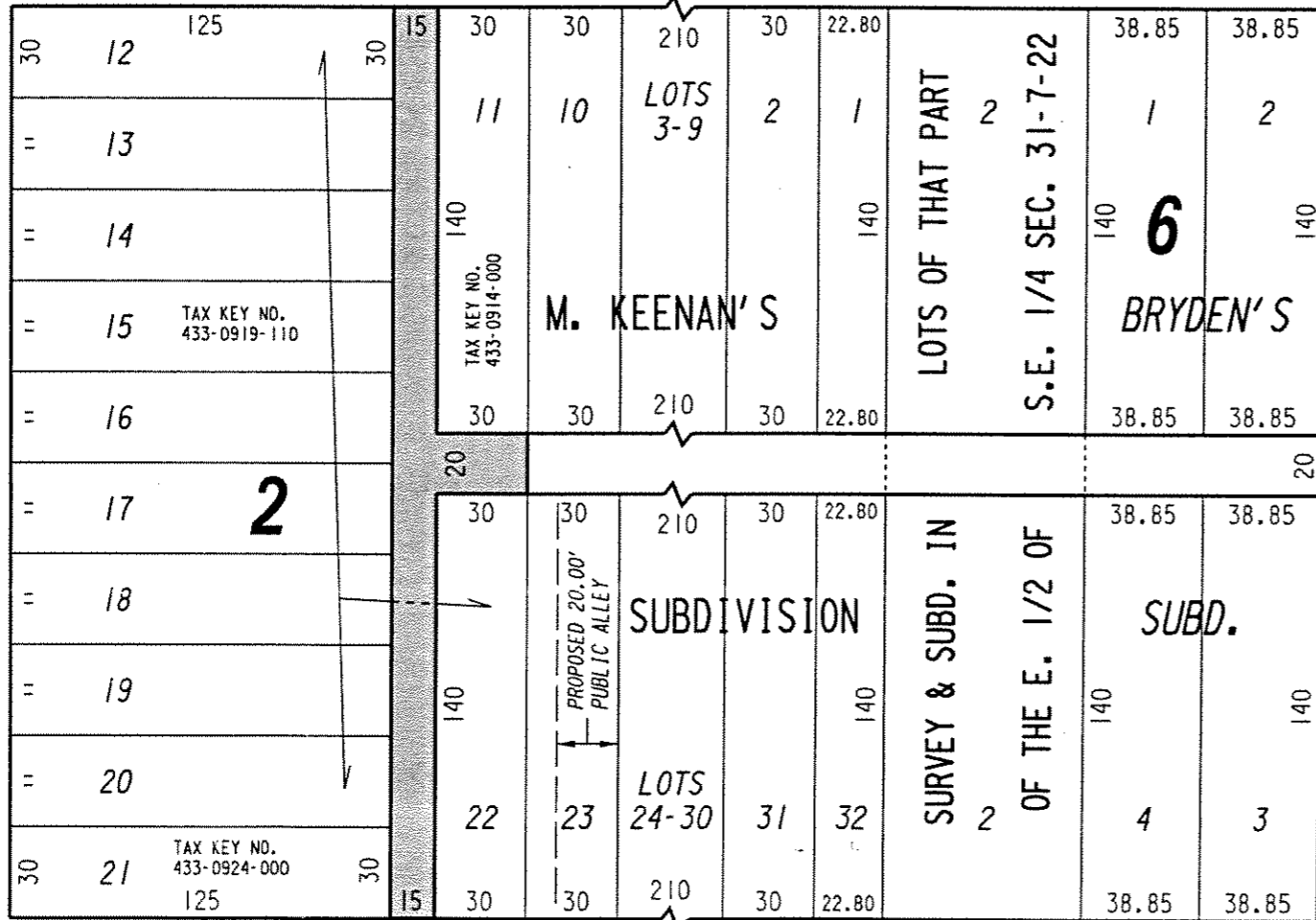


W. Walker

(76' R.O.W.)

St.

S. Cesar E. Chavez (66' R.O.W.) Dr.



W. Mineral

(66.47' R.O.W.)

St.

PORTION OF PUBLIC ALLEY PROPOSED TO BE VACATED

REVISED: APRIL 29, 2005
LIMITS REVISED

S.E. 1/4 SEC. 31, T.7N., R.22E.

433

St.

(41' R.O.W.)

S. 15th

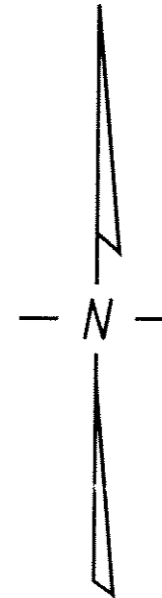


EXHIBIT "A"
FILE NO. 040717

INFRASTRUCTURE SERVICES DIVISION
MILWAUKEE, WISCONSIN

ASSIGNED TO: W.E. FUCHS

CH'K'D. BY: W.E. FUCHS

DRAWN BY: W.E.F.

DATE: OCT. 25, 2004

PROJECT/GRANT NO.: WK52337202

SCALE: 1" = 60'

APPROVED BY:

Marcia Lindholm

CENTRAL DRAFTING & RECORDS MANAGER

[Signature]

CITY ENGINEER