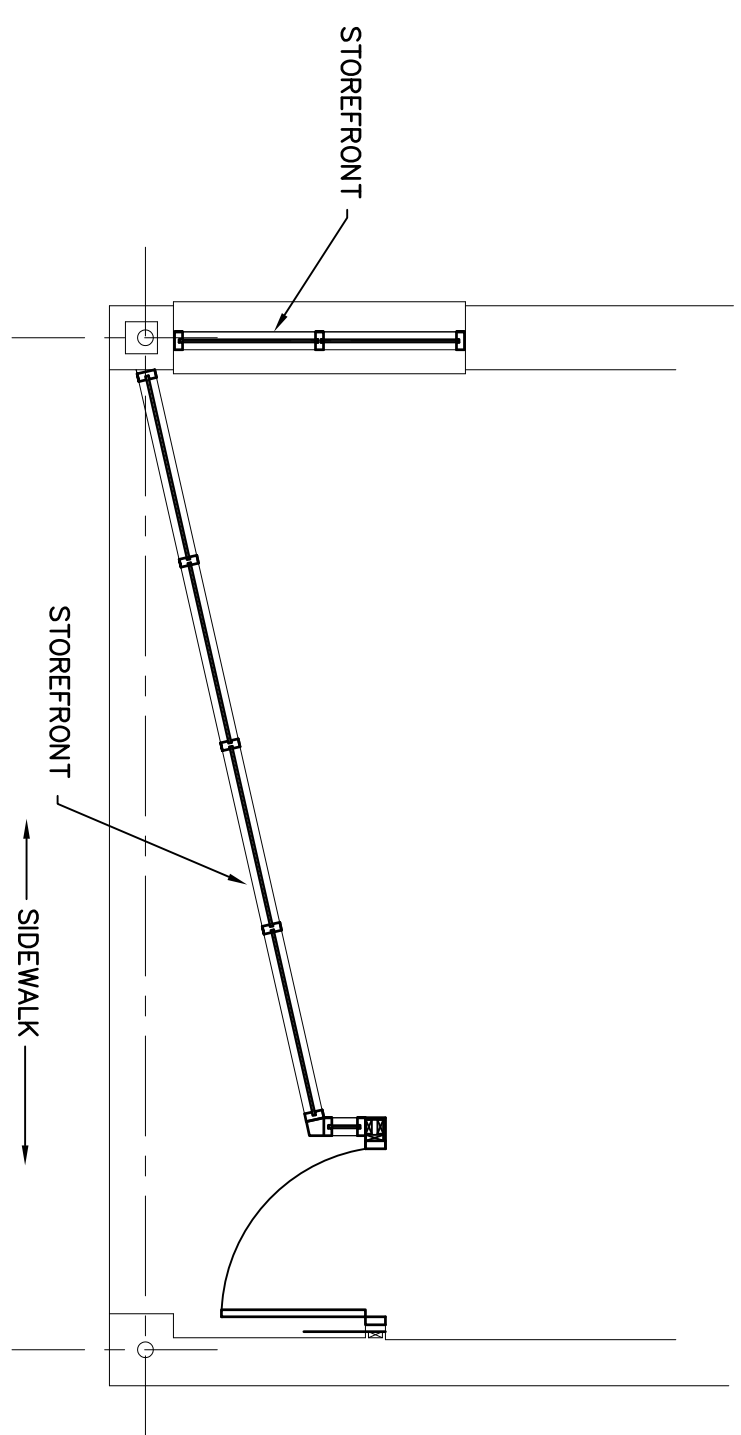
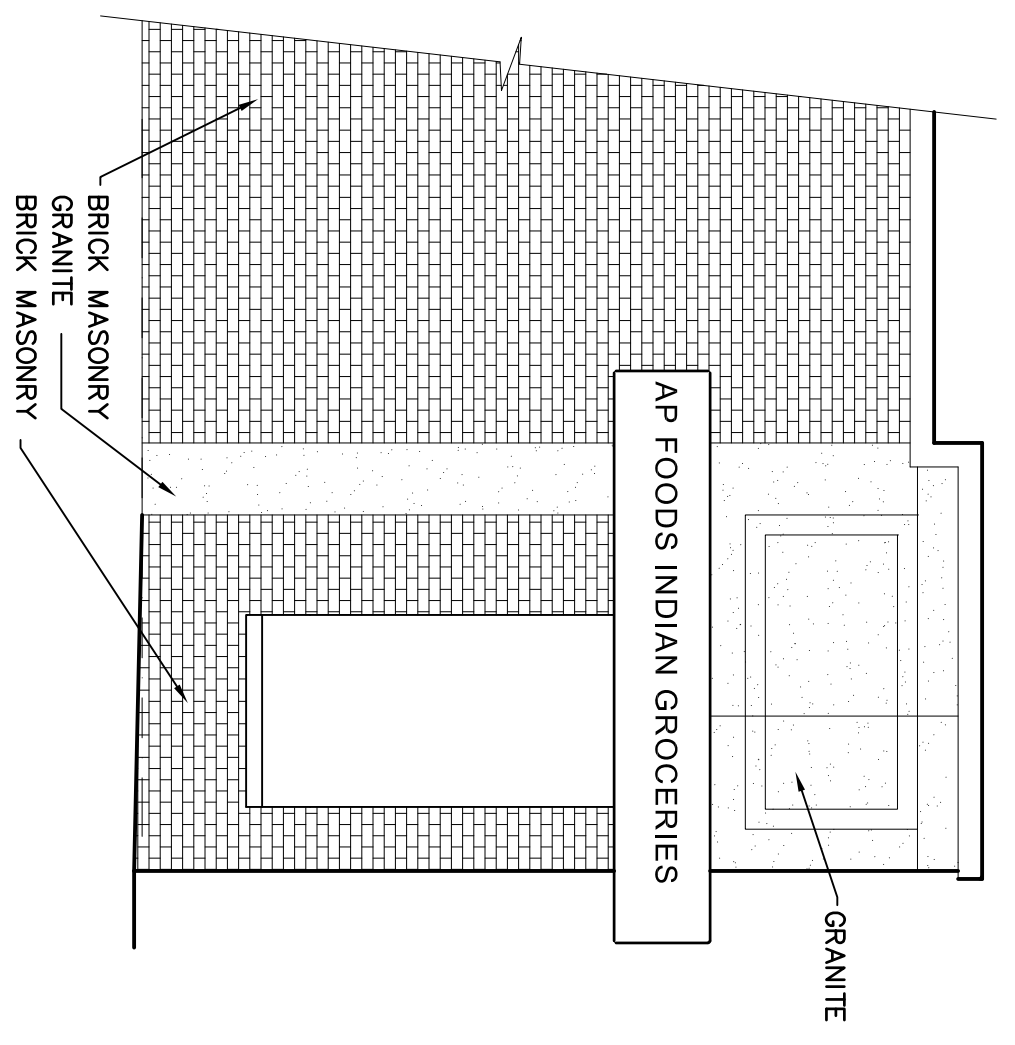


EXISTING FLOOR PLAN  
1/8"=1'-0"

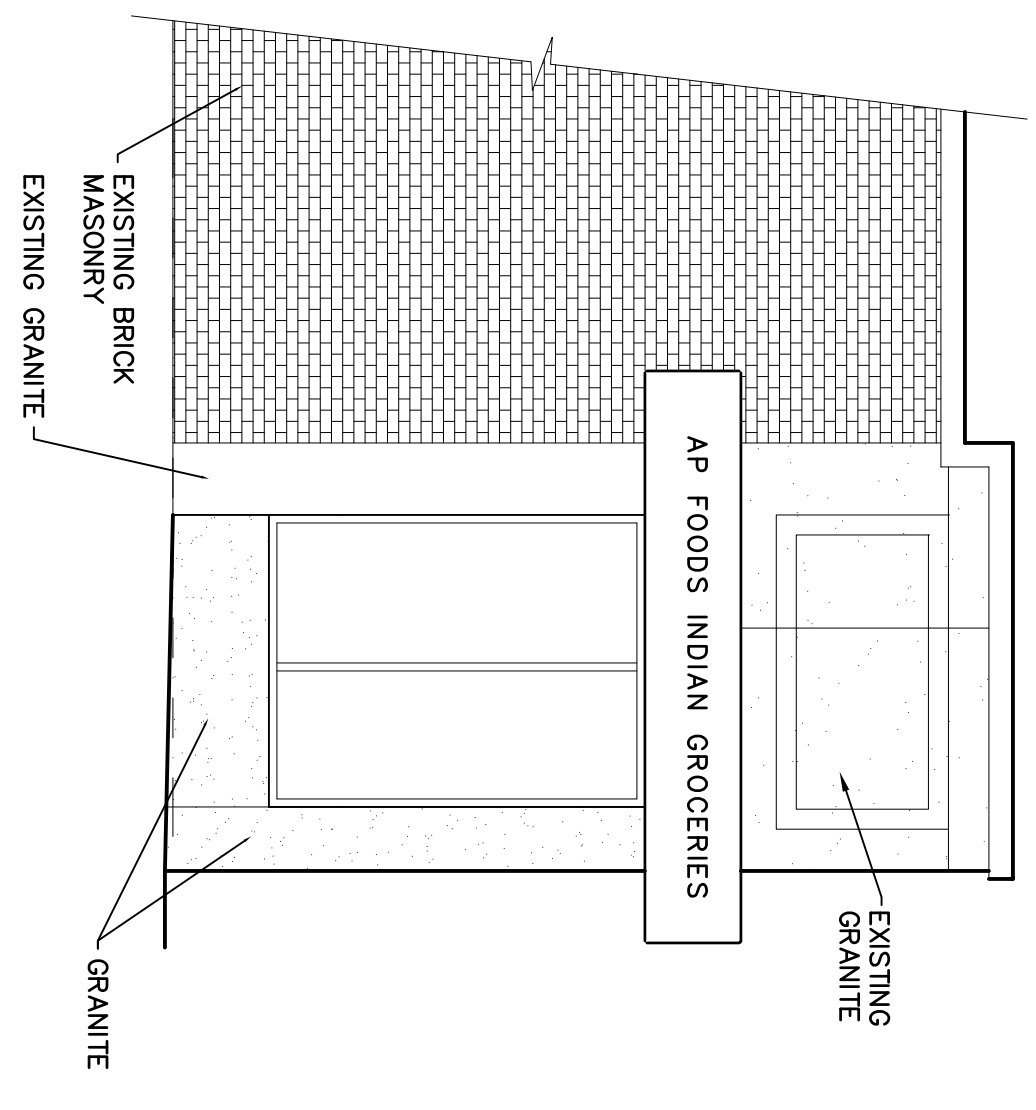


PARTIAL FLOOR PLAN  
1/8"=1'-0"

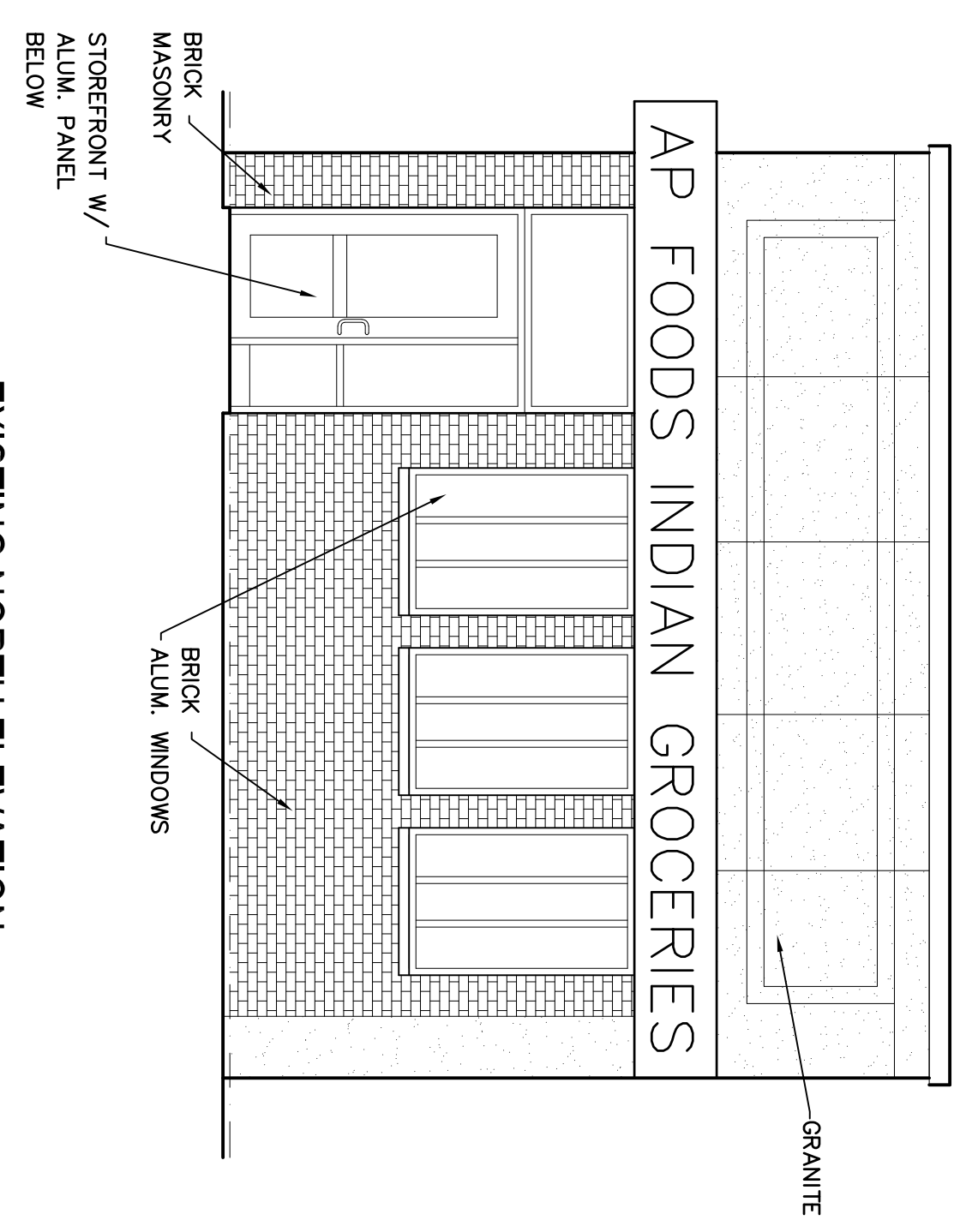


EXISTING EAST ELEVATION  
1/8"=1'-0"

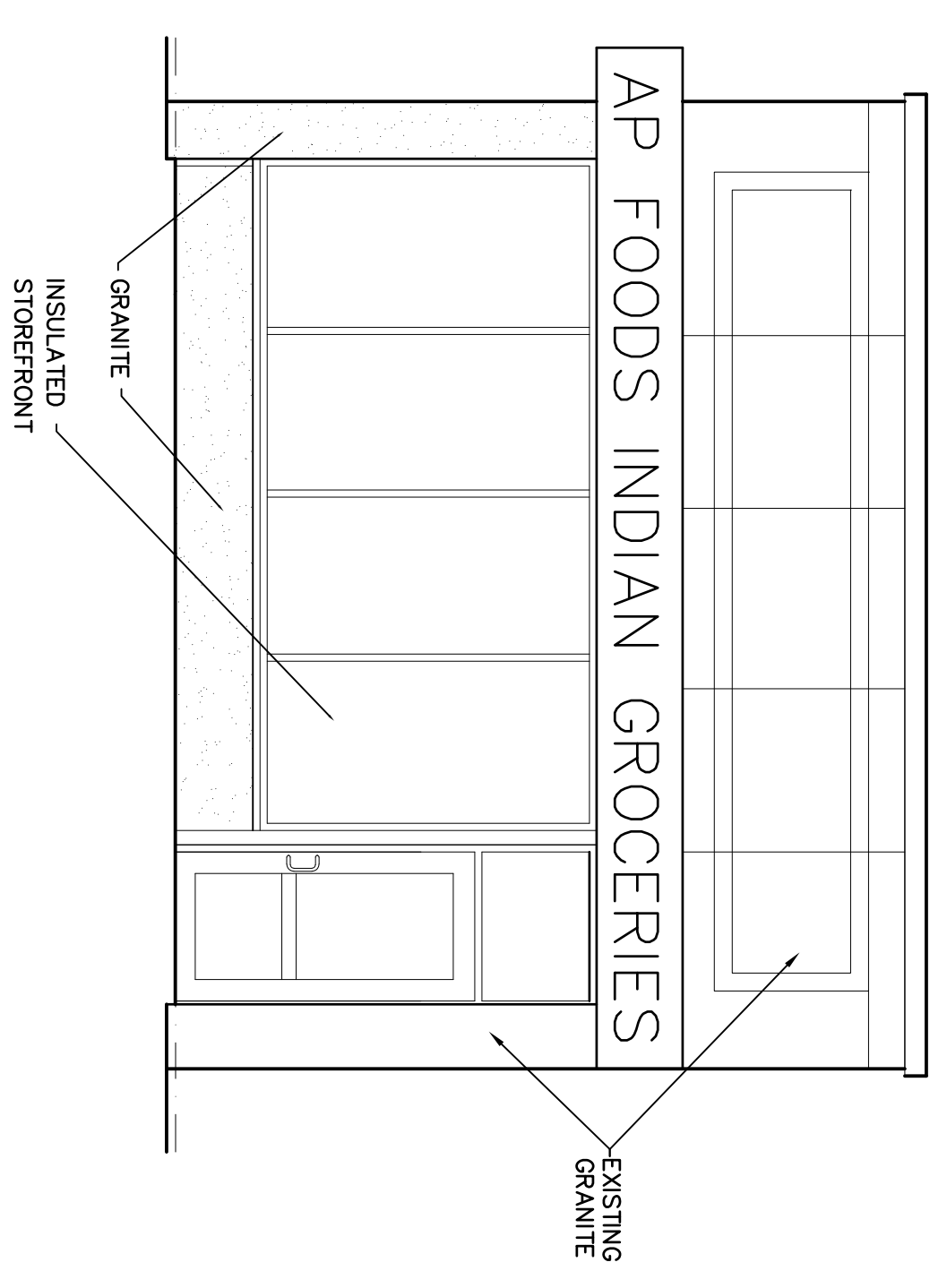
STOREFRONT AS HAS BEEN RE-BUILT



PARTIAL EAST PROPOSED ELEVATION  
1/8"=1'-0"



EXISTING NORTH ELEVATION  
1/8"=1'-0"



PROPOSED NORTH ELEVATION  
1/8"=1'-0"

PROPOSED STOREFRONT MODIFICATIONS, BACK TO ORIGINAL

NO.	DATE	REVISIONS	BY

Architects & Engineers  
 5565 S. 25th Street  
 Milwaukee, Wisconsin 53221  
 Cell:(414) 897-4723  
 tycj9900@gmail.com



EXISTING AND PROPOSED ELEVATIONS

**AP FOODS FACADE RESTORATION**

1023 W. Historic Mitchell Street  
 Milwaukee, Wisconsin

DATE  
1-25-2022

ISSUED FOR

**A100**