

MILWAUKEE CITY HALL HISTORIC BUILDING RESTORATION PROJECT

**A
Progress
Report
to the
Public Works
Committee
July 18, 2007**



Construction Progress to Date

- South Tower Construction – Ongoing
- Dormer Construction – 100% Complete
- Steel at South Tower – 95%
- 8th floor Gutters Installation - In progress
- Production of Copper, Terra Cotta for the South Tower – 10%
- Installation of book tile at South Tower – 100% Complete
- 12th Floor Ring Beam -100% Complete
- Demolition and removal of Slate Roofing – ongoing



Lifting New Clock Face Gable Steel Framing into Place



8th Floor Cornice Reconstruction



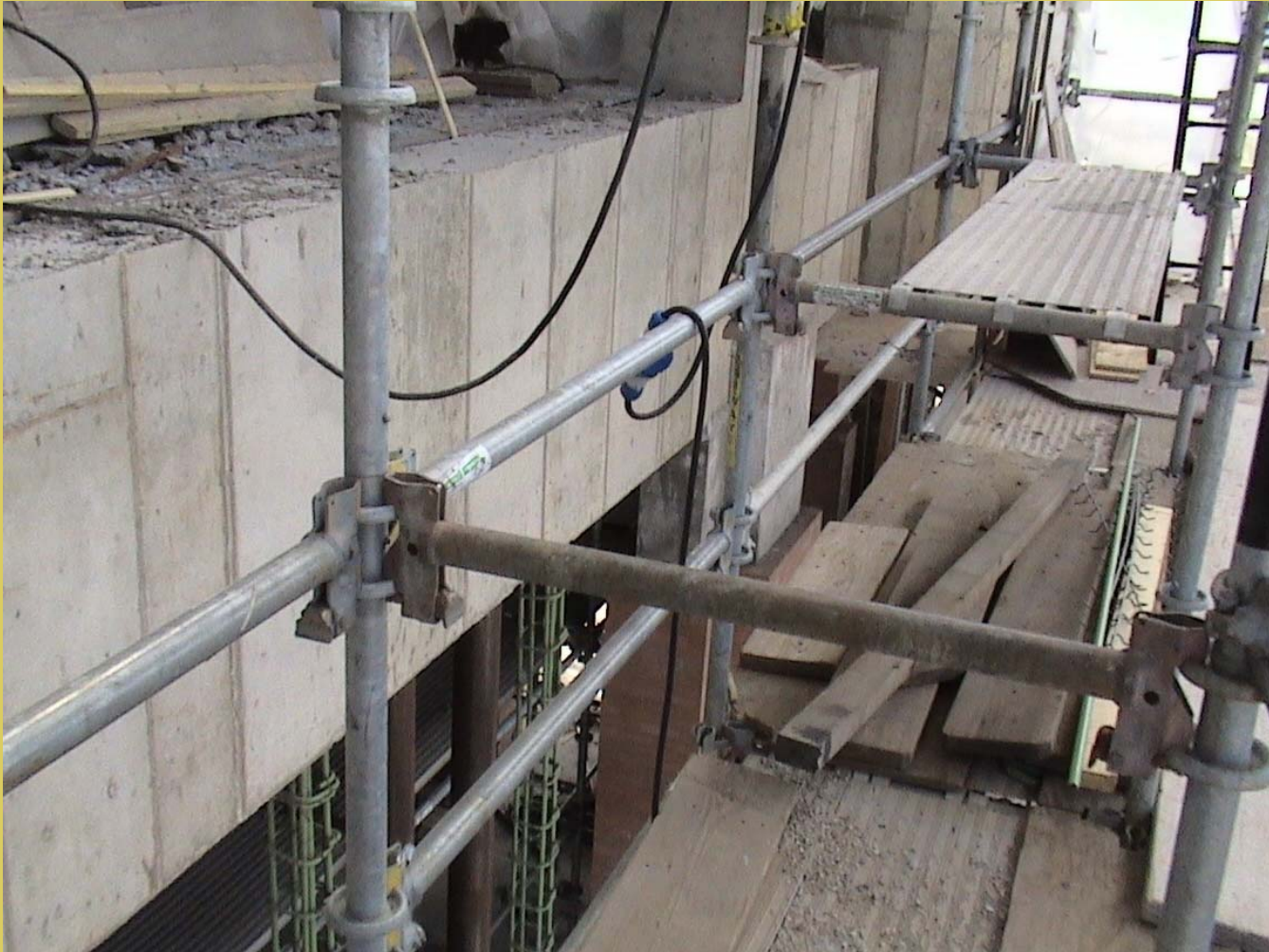
8th Floor Cornice Flashing



Installing Step Flashing at 10th Floor



Reconstructed Ring Beam



Rebuilding Columns on the 12th Floor



Installed Book Tile on the South Tower



Six Month Look Ahead

- Terra cotta, brick, and mock-up approvals- Ongoing
- Steel at the South Tower – Ongoing
- 8th floor Gutters Installation - In progress
- Construction of South Tower - Ongoing
- Decorative Copper, Terra Cotta Fabrication for the South Tower– In progress
- Slate Roof Construction – Ongoing
- Conditional Brick Replacement – Ongoing
- 7th Floor Window Replacements - Ongoing



Clock Face Pre-cast Panels

MILWAUKEE CITY HALL HISTORIC BUILDING RESTORATION PROJECT



**Participation Performance Report
from Project Monitor
Prism Technical Management & Marketing Services
Through April 30, 2007**

MILWAUKEE CITY HALL HISTORIC BUILDING RESTORATION PROJECT

Project Participation Targets

- Residents Preference Program (RPP) Requirement: **25%** of Workforce Hours
- Emerging Business Enterprise (EBE) Requirement: **18%** of Contract Dollars
- Apprenticeship Requirement: **10,000 Hrs** *in the following specified trades – Bricklaying/Masonry, Glazing, Roofing*
- Initial projections/commitments at or above requirements:
 - RPP: 25.2 %
 - EBE: 24.3 %
 - Apprenticeship hours: 10,000 Hrs
 - Minorities in the workforce: 25.0 %
 - Partnership with community workforce advisory committee

MILWAUKEE CITY HALL HISTORIC BUILDING RESTORATION PROJECT

WORKFORCE REQUIREMENTS AND PERFORMANCE DATA THROUGH 4/30/07

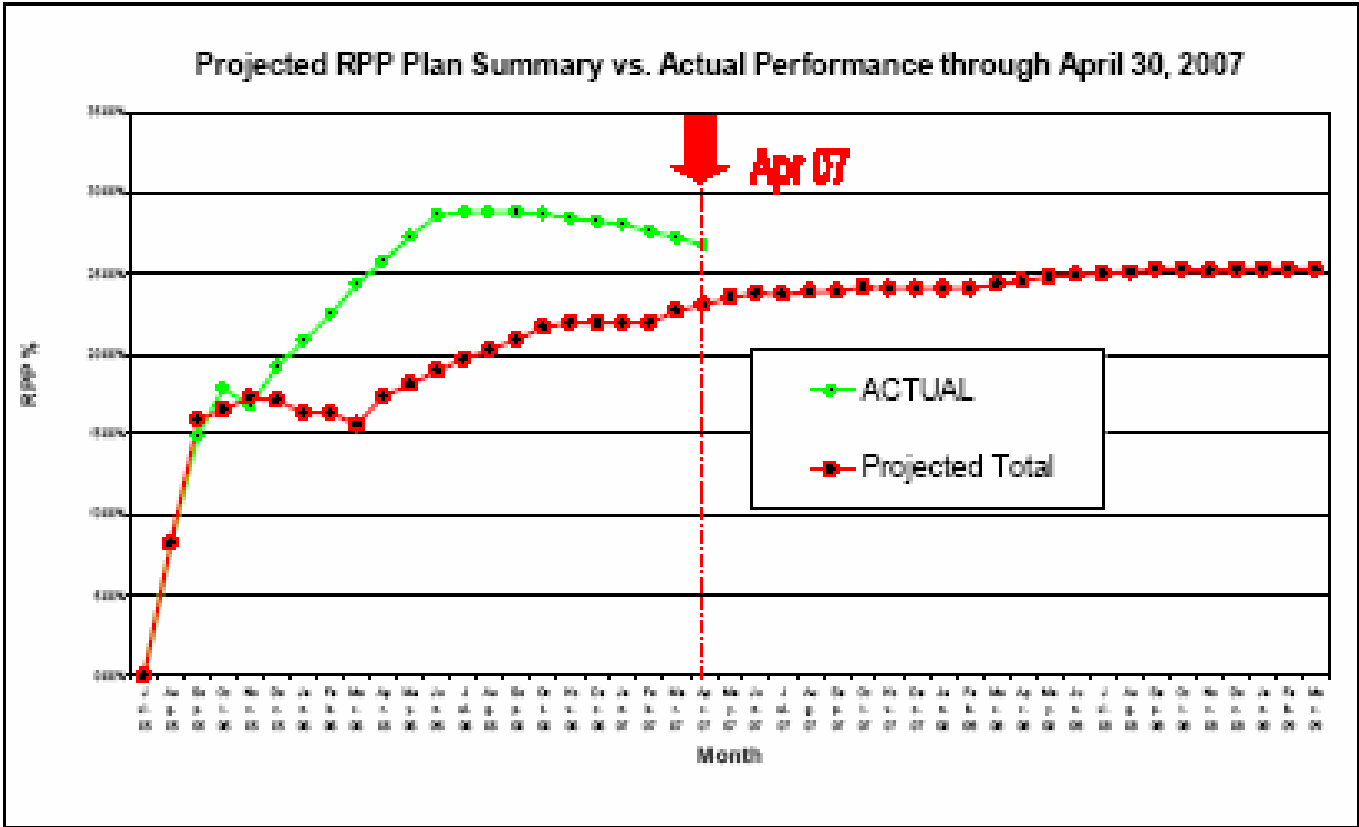
| Project Requirements, Projections and Performance | Man-Hours | Comment |
|--|-----------|---|
| Initial projected hours for project | 424,188 | <i>Provided by JP Cullen</i> |
| Total hours through 4/30/07 | 148,513 | <i>35 % of projected total</i> |
| RPP requirement for entire project (25%) | 106,047 | <i>Based upon initial projected hours</i> |
| RPP hours credited through 4/30/07 | 39,736 | <i>28.6 % of total onsite hours</i> |
| Apprenticeship target for selected trades | 10,000 | <i>2.4 % of total projected hours</i> |
| Apprenticeship hours in <u>selected trades</u> through 4/30/07 | 4,188 | <i>41.9% of project requirement</i> |
| Project Performance – Voluntary Efforts | | |
| Total hours worked by minorities (RPP and otherwise) to date | 46,553 | <i>31.3 % of total onsite hours</i> |
| Total hours worked by apprentices to date | 10,873 | <i>7.3 % of current total</i> |
| Total hours worked by minority apprentices | 8,357 | <i>77 % of apprenticeship hours</i> |

MILWAUKEE CITY HALL HISTORIC BUILDING RESTORATION PROJECT

RPP Workforce through April 30, 2007



MILWAUKEE CITY HALL HISTORIC BUILDING RESTORATION PROJECT



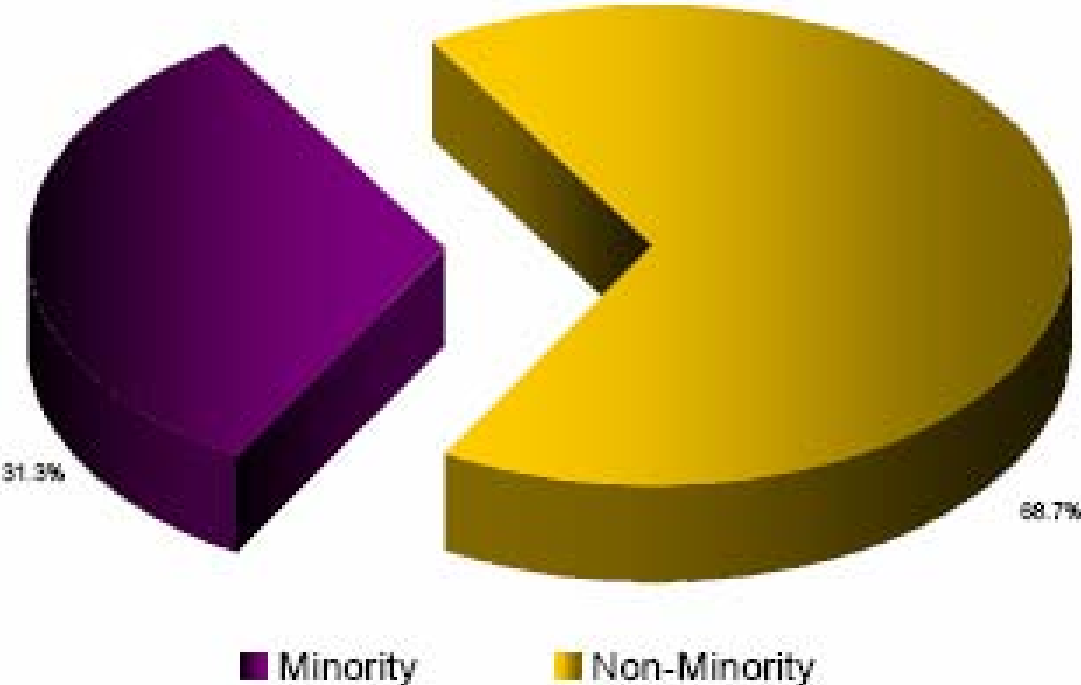
MILWAUKEE CITY HALL HISTORIC BUILDING RESTORATION PROJECT

Apprentice Workforce Data through April 30, 2007

- Estimated total project hours upon completion: 424,188 hours
- Total workforce hours through 4/30/07: 148,513 hours
- Targeted Apprentice Trades:
Bricklayers/Masons, Glaziers and Roofers
- Targeted Trades Requirements: 10,000 hours (2.4% of project total)
6 apprentices
- Targeted Trades Performance: 4,188 hrs (41.9% of requirement)
10 apprentices
- Total Apprentice workforce through 4/30/07: 10,873 hours (7.3% of current total hours)
34 apprentices

MILWAUKEE CITY HALL HISTORIC BUILDING RESTORATION PROJECT

Minority Workforce through April 30, 2007



MILWAUKEE CITY HALL HISTORIC BUILDING RESTORATION PROJECT

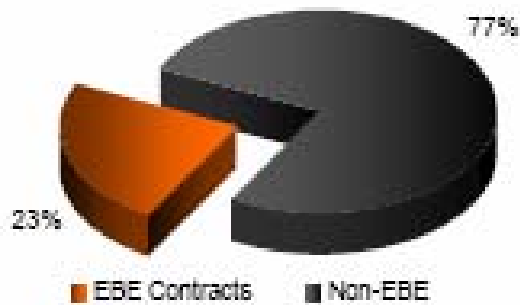
CONSTRUCTION CONTRACTING REQUIREMENTS AND PERFORMANCE DATA THROUGH 4/30/07

| Project Requirements, Contracts and Performance | Values | Comment |
|---|---------------|---|
| Total projected cost | \$ 63,607,152 | <i>Includes approved change orders totaling \$3,679,934</i> |
| Total payments through April 30, 2007 | 27,868,910 | <i>44 % of current projected total</i> |
| EBE <u>requirement</u> based on total projected cost | 11,449,287 | <i>18 % of Projected Cost</i> |
| EBE contracts in place and copied to Project Monitor* | 14,580,289 | <i>22.9 % of total contract and change orders</i> |
| Payments to EBE contractors | 4,368,013 | <i>15.7 % of total payments</i> |

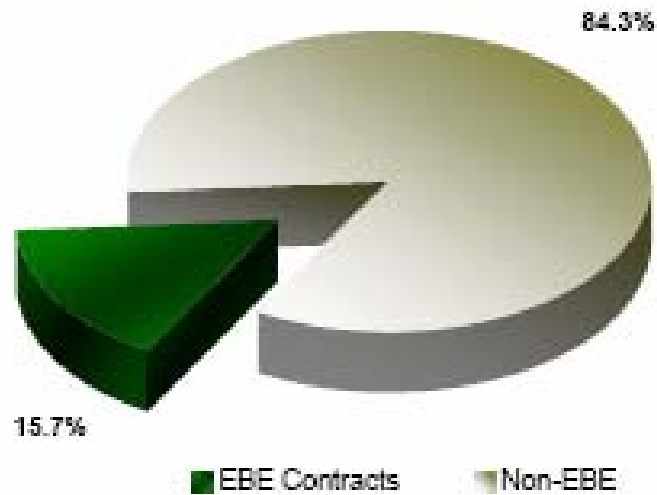
*EBE to EBE subcontracting - not counted above - increases total EBE involvement by \$704,000 to \$15,288,129

MILWAUKEE CITY HALL HISTORIC BUILDING RESTORATION PROJECT

Current Subcontracting Plan
(with Change Orders)



Project Payments through April 30, 2007



MILWAUKEE CITY HALL HISTORIC BUILDING RESTORATION PROJECT

EBE Construction Vendors

| VENDOR | SERVICE |
|---|-------------------------------|
| Arteaga Construction ⁴ | HVAC, Masonry, Brick |
| Roberts Roofing ³ | Roofing |
| Thomas A. Mason Co. ⁴ | Painting, Masonry, Cleaning |
| B&D Contractors ⁵ | Scaffold Labor |
| J. F. Cook Company ^{3F} | Windows |
| Ojibwa Ready Mix ⁵ | Concrete Supplier |
| P.L. Freeman Company ¹ | Plumbing |
| Affirmative Supply ² | Mechanical Equipment Supplier |
| The Pennebaker Enterprises ¹ | Roofing |

Ethnicity and Gender Codes

1-African American; 2-Asian American; 3-Caucasian; 4-Hispanic; 5 – Native American / If Female "F"

MILWAUKEE CITY HALL HISTORIC BUILDING RESTORATION PROJECT

EBE Professional Service Providers

| VENDOR | SERVICE |
|--|---|
| Architectural Lighting Consultants ^{3F} | Lighting design services |
| Bloom Consultants ² | Structural engineering services |
| Heartland Engineering ³ | Electrical engineering and specification services |
| M. L. Tharps & Associates ¹ | Accounting / auditing services |
| Prism Technical ¹ | EBE, RPP and apprentice utilization monitoring |
| PSJ Engineering ² | Mechanical and plumbing engineering services |

Ethnicity and Gender Codes

1-African American; 2-Asian American; 3-Caucasian; 4-Hispanic; 5 – Native American / If Female "F"

MILWAUKEE CITY HALL HISTORIC BUILDING RESTORATION PROJECT



M.L. Tharps & Associates

Construction Audit and Advisory Services

**MILWAUKEE CITY HALL HISTORIC BUILDING RESTORATION PROJECT
COST SUMMARY AS OF APRIL 30, 2007**

| A | B | C | D | E | F=D+E | G=C-F | H | I=F+H | J=C-I | K=L/F | L | M=F-L | N=I-L |
|---------------------------|--|---------------------|---------------------------------------|------------------------|---|--|--|--|--|------------------|------------------------|--|--|
| Item & Schedule Reference | Task Description | Approved Budget | Approved Contracts / Scheduled Values | Approved Change Orders | Total Approved Contracts / Scheduled Values | Budget (Over)/Under Total Approved Contracts to Date Deviation | Potential Change Orders and Additional Contracts | Total Approved and Potential Contracts | Budget (Over)/Under Total Approved and Potential Contracts | Percent Expended | Costs Incurred to Date | Balance to Complete Approved Contracts | Balance to Complete Approved and Potential Contracts |
| A | General Contractor J.P. Cullen & Sons | \$59,927,218 | 59,927,218 | 3,679,934 | 63,607,152 | (3,679,934) | 557,827 | 64,164,979 | (4,237,761) | 49% | 30,858,924 | 32,748,228 | 33,306,055 |
| B | Architectural / Engineering Services Engberg Anderson Design Partnership Team | 1,206,000 | 1,206,000 | - | 1,206,000 | - | - | 1,206,000 | - | 0% | - | 1,206,000 | 1,206,000 |
| C | Other Consultants/Other Contractors/Miscellaneous Costs | 2,106,782 | 1,886,220 | 13,868 | 1,900,088 | 206,694 | - | 1,900,088 | 206,694 | 74% | 1,408,375 | 491,713 | 491,713 |
| D | City of Milwaukee Department of Public Works Administration and Inspection | 760,000 | 760,000 | - | 760,000 | - | - | 760,000 | - | 63% | 478,201 | 281,799 | 281,799 |
| E | Construction Contingency | 6,000,000 | - | 3,693,802 | 3,693,802 | 2,306,198 | 557,827 | 4,251,629 | 1,748,371 | - | - | - | - |
| | Total Phase III Project Costs (Costs Paid or Encumbered from July 1 to April 30, 2007) | \$70,000,000 | 63,779,438 | 3,693,802 | 67,473,240 | (3,473,240) | 557,827 | 68,031,067 | (4,031,067) | 49% | 32,745,500 | 34,727,740 | 35,285,567 |
| F | Total Phase II Project Costs (Costs Paid and Encumbered from December 9, 2002 to April 30, 2007) | \$ 4,550,026 | 4,162,416 | 387,610 | 4,550,026 | - | - | 4,550,026 | - | 95% | 4,325,380 | 224,645 | 224,645 |
| G | Total Phase I Project Costs (Costs Incurred Prior to December 9, 2002) | 1,904,143 | 1,904,143 | - | 1,904,143 | - | - | 1,904,143 | - | 100% | 1,904,143 | - | - |
| | Grand Total Project Costs (Phase I, II & III) | \$76,454,169 | 69,845,997 | 4,081,412 | 73,927,409 | (3,473,240) | 557,827 | 74,485,236 | (4,031,067) | 53% | 38,975,023 | 34,952,385 | 35,510,212 |

NOTE: The shaded cells above are not included in the totals formulas in order to accurately reflect the balance of the construction contingency.

**MILWAUKEE CITY HALL HISTORIC BUILDING RESTORATION PROJECT
GENERAL CONTRACTOR: J.P. CULLEN & SONS
COST SUMMARY - PHASE III (JULY 1, 2005 TO APRIL 30, 2007)**

| A | B | C | D | E | F=D+E | G=C-F | H | I=F+H | J=C-I | K=L/F | L | M=F-L | N=I-L |
|------|---------------------------------|---------------------|---------------------------------------|------------------------|---|--|--|--|--|------------------|------------------------|--|--|
| Item | Task Description | Approved Budget | Approved Contracts / Scheduled Values | Approved Change Orders | Total Approved Contracts / Scheduled Values | Budget (Over)/Under Total Approved Contracts to Date Deviation | Potential Change Orders and Additional Contracts | Total Approved and Potential Contracts | Budget (Over)/Under Total Approved and Potential Contracts | Percent Expended | Costs Incurred to Date | Balance to Complete Approved Contracts | Balance to Complete Approved and Potential Contracts |
| 1 | Bid 100A - Tower | \$39,801,656 | 39,801,656 | - | 39,801,656 | - | - | 39,801,656 | - | 47% | 18,607,682 | 21,193,974 | 21,193,974 |
| 2 | Bid 200A - West (7th Floor Up) | 5,625,845 | 5,625,845 | - | 5,625,845 | - | - | 5,625,845 | - | 67% | 3,761,848 | 1,863,997 | 1,863,997 |
| 3 | Bid 300A West (7th Floor Down) | 2,501,225 | 2,501,225 | - | 2,501,225 | - | - | 2,501,225 | - | 34% | 847,082 | 1,654,143 | 1,654,143 |
| 4 | Bid 200B East (7th Floor Up) | 4,663,132 | 4,663,132 | - | 4,663,132 | - | - | 4,663,132 | - | 59% | 2,735,758 | 1,927,374 | 1,927,374 |
| 5 | Bid 300B East (7th Floor Down) | 2,586,299 | 2,586,299 | - | 2,586,299 | - | - | 2,586,299 | - | 32% | 827,227 | 1,759,072 | 1,759,072 |
| 6 | Bid 200C North (7th Floor Up) | 2,685,911 | 2,685,911 | - | 2,685,911 | - | - | 2,685,911 | - | 52% | 1,401,807 | 1,284,104 | 1,284,104 |
| 7 | Bid 300C North (7th Floor Down) | 1,228,580 | 1,228,580 | - | 1,228,580 | - | - | 1,228,580 | - | 34% | 412,652 | 815,928 | 815,928 |
| 8 | Bid 200D Roof | 834,570 | 834,570 | - | 834,570 | - | - | 834,570 | - | 13% | 106,402 | 728,168 | 728,168 |
| 9 | Change Orders | - | - | 3,679,934 | 3,679,934 | (3,679,934) | 557,827 | 4,237,761 | (4,237,761) | 59% | 2,158,467 | 1,521,467 | 2,079,294 |
| | Total | \$59,927,218 | 59,927,218 | 3,679,934 | 63,607,152 | (3,679,934) | 557,827 | 64,164,979 | (4,237,761) | 49% | 30,858,924 | 32,748,228 | 33,306,055 |

**MILWAUKEE CITY HALL HISTORIC BUILDING RESTORATION PROJECT
 ARCHITECTURAL / ENGINEERING SERVICES: ENGBERG ANDERSON DESIGN PARTNERSHIP TEAM
 COST SUMMARY - PHASE III (JULY 1, 2005 TO APRIL 30, 2007)**

| A | B | C | D | E | F=D+E | G=C-F | H | I=F+H | J=C-I | K=L/F | L | M=F-L | N=I-L |
|------|-----------------------------|---------------------|---------------------------------------|------------------------|---|--|--|--|--|------------------|------------------------|--|--|
| Item | Task Description | Approved Budget | Approved Contracts / Scheduled Values | Approved Change Orders | Total Approved Contracts / Scheduled Values | Budget (Over)/Under Total Approved Contracts to Date Deviation | Potential Change Orders and Additional Contracts | Total Approved and Potential Contracts | Budget (Over)/Under Total Approved and Potential Contracts | Percent Expended | Costs Incurred to Date | Balance to Complete Approved Contracts | Balance to Complete Approved and Potential Contracts |
| 1 | Construction Administration | \$ 1,206,000 | 1,206,000 | - | 1,206,000 | - | - | 1,206,000 | - | 0% | - | 1,206,000 | 1,206,000 |
| 2 | Reimbursables | - | - | - | - | - | - | - | - | 0% | - | - | - |
| | Total | \$ 1,206,000 | \$ 1,206,000 | - | 1,206,000 | - | - | 1,206,000 | - | 0% | - | 1,206,000 | 1,206,000 |

**MILWAUKEE CITY HALL HISTORIC BUILDING RESTORATION PROJECT
OTHER CONSULTANTS, CONTRACTORS & MISCELLANEOUS
COSTS SUMMARY - PHASE III (JULY 1, 2005 TO APRIL 30, 2007)**

| A | B | C | D | E | F=D+E | G=C-F | H | I=F+H | J=C-I | K=L/F | L | M=F-L | N=I-L |
|------|---|---------------------|---------------------------------------|------------------------|---|--|--|--|--|------------------|------------------------|--|--|
| Item | Task Description | Approved Budget | Approved Contracts / Scheduled Values | Approved Change Orders | Total Approved Contracts / Scheduled Values | Budget (Over)/Under Total Approved Contracts to Date Deviation | Potential Change Orders and Additional Contracts | Total Approved and Potential Contracts | Budget (Over)/Under Total Approved and Potential Contracts | Percent Expended | Costs Incurred to Date | Balance to Complete Approved Contracts | Balance to Complete Approved and Potential Contracts |
| 1 | Concord / Tharps | \$ 500,000 | 508,685 | - | 508,685 | (8,685) | - | 508,685 | (8,685) | 27% | 138,270 | 370,415 | 370,415 |
| 2 | Prism Technical Mgt. | 150,000 | 150,000 | 13,868 | 163,868 | (13,868) | - | 163,868 | (13,868) | 70% | 115,027 | 48,841 | 48,841 |
| 3 | City of Milwaukee Bond Issuance Costs | 115,000 | 150,000 | - | 150,000 | (35,000) | - | 150,000 | (35,000) | 85% | 127,935 | 22,065 | 22,065 |
| 4 | Police Antenna Relocation | 100,000 | 65,601 | - | 65,601 | 34,399 | - | 65,601 | 34,399 | 100% | 65,601 | (0) | (0) |
| 5 | City Attorney Temporary Office Relocation | 1,000,000 | 900,000 | - | 900,000 | 100,000 | - | 900,000 | 100,000 | 94% | 849,607 | 50,393 | 50,393 |
| 6 | Other Misc Goods & Services | 241,782 | 111,934 | - | 111,934 | 129,848 | - | 111,934 | 129,848 | 100% | 111,934 | - | - |
| | Total | \$ 2,106,782 | 1,886,220 | 13,868 | 1,900,088 | 206,694 | - | 1,900,088 | 206,694 | 74% | 1,408,375 | 491,713 | 491,713 |

**MILWAUKEE CITY HALL HISTORIC BUILDING RESTORATION PROJECT
CITY OF MILWAUKEE DPW ADMINISTRATION & INSPECTION
COST SUMMARY - PHASE III (JULY 1, 2005 TO APRIL 30, 2007)**

| A | B | C | D | E | F=D+E | G=C-F | H | I=F+H | J=C-I | K=L/F | L | M=F-L | N=I-L |
|-------------|--|------------------------|--|-------------------------------|--|---|---|---|---|-------------------------|-------------------------------|---|---|
| Item | Task Description | Approved Budget | Approved Contracts / Scheduled Values | Approved Change Orders | Total Approved Contracts / Scheduled Values | Budget (Over)/Under Total Approved Contracts to Date Deviation | Potential Change Orders and Additional Contracts | Total Approved and Potential Contracts | Budget (Over)/Under Total Approved and Potential Contracts | Percent Expended | Costs Incurred to Date | Balance to Complete Approved Contracts | Balance to Complete Approved and Potential Contracts |
| 1 | Investigative Work & Design Administration (0712/0713) | 45,000 | 45,000 | - | 45,000 | - | - | 45,000 | - | 87% | 39,256 | 5,744 | 5,744 |
| 2 | Construction Administration Professional (071D) | 400,000 | 400,000 | - | 400,000 | - | - | 400,000 | - | 70% | 281,357 | 118,643 | 118,643 |
| 3 | Construction Administration Inspection (071E) | 315,000 | 315,000 | - | 315,000 | - | - | 315,000 | - | 50% | 157,588 | 157,412 | 157,412 |
| | Total | 760,000 | 760,000 | - | 760,000 | - | - | 760,000 | - | 63% | 478,201 | 281,799 | 281,799 |

**MILWAUKEE CITY HALL HISTORIC BUILDING RESTORATION PROJECT
CONSTRUCTION CONTINGENCY SUMMARY
PHASE III (JULY 1, 2005 TO APRIL 30, 2007)**

| A | B | C | D | E | F | G=C-D-E-F | H | I | J |
|------|---|---------------------|------------------------|-------------------------|-----------------------------|---------------------|------------------------|-------------------------|----------|
| Item | Task Description | Approved Budget | Approved Change Orders | Potential Change Orders | Owner Requested Added Scope | Contingency Balance | A/E Errors & Omissions | Value Engineering Items | Other |
| 1 | General Contractor J.P. Cullen & Sons | \$ 6,000,000 | 3,679,934 | 557,827 | - | 1,762,239 | - | - | - |
| 2 | Architectural/Engineer Services Engberg Anderson Design Partnership Team | - | - | - | - | - | - | - | - |
| 3 | Other Consultants, Contractors & Misc Costs | - | 13,868 | - | - | (13,868) | - | - | - |
| 4 | City of Milwaukee Department of Public Works | - | - | - | - | - | - | - | - |
| | Total | \$ 6,000,000 | 3,693,802 | 557,827 | - | 1,748,371 | - | - | - |

**MILWAUKEE CITY HALL HISTORIC BUILDING RESTORATION PROJECT
TOTAL PHASE II COSTS
(COSTS FROM DECEMBER 9, 2002 TO APRIL 30, 2007)**

| A | B | C | D | E | F=D+E | G=C-F | H | I=F+H | J=C-I | K=L/F | L | M=F-L | N=I-L |
|------|--|---------------------|---------------------------------------|------------------------|---|--|--|--|--|------------------|------------------------|--|--|
| Item | Task Description | Approved Budget | Approved Contracts / Scheduled Values | Approved Change Orders | Total Approved Contracts / Scheduled Values | Budget (Over)/Under Total Approved Contracts to Date Deviation | Potential Change Orders and Additional Contracts | Total Approved and Potential Contracts | Budget (Over)/Under Total Approved and Potential Contracts | Percent Expended | Costs Incurred to Date | Balance to Complete Approved Contracts | Balance to Complete Approved and Potential Contracts |
| 1 | Architectural / Engineering Services Engberg Anderson Design Partnership Team (Base Contract)*** | \$ 3,762,848 | 3,375,238 | 387,610 | 3,762,848 | - | - | 3,762,848 | - | 100% | 3,762,848 | (0) | (0) |
| 2 | Architectural / Engineering Services Engberg Anderson Design Partnership Team (Contract Extension)*** | 265,677 | 265,677 | - | 265,677 | - | - | 265,677 | - | 15% | 41,032 | 224,645 | 224,645 |
| 3 | Other Consultants/Other Contractors/Miscellaneous Costs | 248,723 | 248,723 | - | 248,723 | - | - | 248,723 | - | 100% | 248,723 | - | - |
| 4 | City of Milwaukee Department of Public Works Design / Bid Administration | 272,777 | 272,777 | - | 272,777 | - | - | 272,777 | - | 100% | 272,777 | - | - |
| | Total Phase II Project Costs | \$ 4,550,026 | 4,162,416 | 387,610 | 4,550,026 | - | - | 4,550,026 | - | 95% | 4,325,380 | 224,645 | 224,645 |

*** Costs from December 9, 2002 though April 30, 2007 contracted prior to Phase III.

**MILWAUKEE CITY HALL HISTORIC BUILDING RESTORATION PROJECT
TOTAL PHASE I COSTS
(COSTS PRIOR TO DECEMBER 9, 2002)**

| A | B | C | D | E | F=D+E | G=C-F | H | I=F+H | J=C-I | K=L/F | L | M=F-L | N=I-L |
|------|---|---------------------|---------------------------------------|------------------------|---|--|--|--|--|------------------|------------------------|--|--|
| Item | Task Description | Approved Budget | Approved Contracts / Scheduled Values | Approved Change Orders | Total Approved Contracts / Scheduled Values | Budget (Over)/Under Total Approved Contracts to Date Deviation | Potential Change Orders and Additional Contracts | Total Approved and Potential Contracts | Budget (Over)/Under Total Approved and Potential Contracts | Percent Expended | Costs Incurred to Date | Balance to Complete Approved Contracts | Balance to Complete Approved and Potential Contracts |
| 1 | Other Consultants/Other Contractors/Miscellaneous Costs | \$ 1,769,460 | 1,769,460 | - | 1,769,460 | - | - | 1,769,460 | - | 100% | 1,769,460 | - | - |
| 2 | City of Milwaukee Department of Public Works Investigation / Repairs Administration | 134,683 | 134,683 | - | 134,683 | - | - | 134,683 | - | 100% | 134,683 | - | - |
| | Total Phase II Project Costs | \$ 1,904,143 | 1,904,143 | - | 1,904,143 | - | - | 1,904,143 | - | 100% | 1,904,143 | - | - |

MILWAUKEE CITY HALL HISTORIC BUILDING RESTORATION PROJECT

GENERAL CONTRACTOR: J.P. CULLEN & SONS

APPROVED CHANGES & POTENTIAL CHANGES

| A | B | C | C | D | E | F | G | H | J | K | L | M |
|-----------------|--|-------------|-------------------------|-------------------------|------------------------|------------------------|---------------------------|------------------------|-------------------------|----------------|--------------|-------------------------------|
| Item No. | Item Description | CO # | Estimated Amount | Submitted Amount | Approved Amount | Rejected Amount | Existing Condition | Owner's Request | A/E Design Error | VE Item | Other | Contingency Adjustment |
| 14 | Issue # 130 Proposed Gutter Flashing | 8 | | | (30,456) | | (30,456) | | | | | 30,456 |
| 15 | Issue # 131 Slate Remove & Replace | 9/10 | | | 1,278,086 | | 1,278,086 | | | | | (1,278,086) |
| 16 | Issue # 132 Extra Pieces @ Gabel | 6 | | | 8,376 | | 8,376 | | | | | (8,376) |
| 17 | Issue # 136 Precast Tuck @ 13th Floor | 7 | | | 891 | | 891 | | | | | (891) |
| 18 | Issue # 137 21 Beams @ ST Ring Beam | 7 | | | 5,982 | | 5,982 | | | | | (5,982) |
| 19 | Issue # 139 Penebaker Qualification | 7 | | | 10,399 | | | 10,399 | | | | (10,399) |
| 20 | Issue # 142 ST C Channels | 6 | | | 192,941 | | 192,941 | | | | | (192,941) |
| 21 | Issue # 151 Terra Cotta @ Modillions | 5 | | | 189,101 | | 189,101 | | | | | (189,101) |
| 22 | Issue # 152 Turret Section CB #05 | 8 | | | 11,260 | | 11,260 | | | | | (11,260) |
| 23 | Issue # 155 ST Balustrade Deck | 11 | | | 8,591 | | 8,591 | | | | | (8,591) |
| 24 | Issue # 157 Replace Horizontal Channels @ 12 Flr | 6 | | | 12,017 | | 12,017 | | | | | (12,017) |
| 25 | Issue # 158 Remove Second Roof Layer @ 12 Flr | 8 | | | 2,940 | | 2,940 | | | | | (2,940) |
| 26 | Issue # 159 A325 bolts at Dormer Rake | 7 | | | 17,469 | | 17,469 | | | | | (17,469) |
| 27 | Issue # 160 Remove Steel Channels @ 12 Floor ST | 8 | | | 6,384 | | 6,384 | | | | | (6,384) |
| 28 | Issue # 161 Gusset Plates @ 12th Core | 7 | | | 37,549 | | 37,549 | | | | | (37,549) |
| 29 | Issue # 170 Dormers w/out tees CB #06 | 8 | | | 53,473 | | 53,473 | | | | | (53,473) |

MILWAUKEE CITY HALL HISTORIC BUILDING RESTORATION PROJECT
GENERAL CONTRACTOR: J.P. CULLEN & SONS
APPROVED CHANGES & POTENTIAL CHANGES

| A | B | C | C | D | E | F | G | H | J | K | L | M |
|----------|--|------|------------------|------------------|-----------------|-----------------|--------------------|-----------------|------------------|-----------|---------|------------------------|
| Item No. | Item Description | CO # | Estimated Amount | Submitted Amount | Approved Amount | Rejected Amount | Existing Condition | Owner's Request | A/E Design Error | VE Item | Other | Contingency Adjustment |
| 29 | Issue # 170 Dormers w/out tees CB #06 | 8 | | | 53,473 | | 53,473 | | | | | (53,473) |
| 30 | Issue # 171 Paint Fire E scape on 2nd Floor | 8 | | | 1,735 | | 1,735 | | | | | (1,735) |
| 31 | Issue # 189 Copper @ Top of Lantern | 11 | | | 7,563 | | 7,563 | | | | | (7,563) |
| 32 | Issue # 205 Rolled Angle @ Drum | | | 38,328 | | | 38,328 | | | | | (38,328) |
| 33 | Issue # 219 8th Floor Sill Anchor CB #07 | 11 | | | 4,679 | | 4,679 | | | | | (4,679) |
| 34 | Issue # 226 Door @ Dormer E16 | 11 | | | 7,018 | | 7,018 | | | | | (7,018) |
| 35 | Issue # 230 Heat & Winter Costs | 8 | | | 102,110 | | 102,110 | | | | | (102,110) |
| 36 | Issue #248 Brick Test Run for ST | 8 | | | 14,335 | | 14,335 | | | | | (14,335) |
| 37 | Issue # 251 Brick @ Slate on S.T. | 11 | | | (3,356) | | (3,356) | | | | | 3,356 |
| 38 | Issue #256 Cut 3/4" Off New Brick @ 7th Flr Frieze | 11 | | | 31,854 | | 31,854 | | | | | (31,854) |
| 39 | Issue # 263 Gutter Drains @ 8 Flr | 11 | | | 23,168 | | 23,168 | | | | | (23,168) |
| 40 | Issue #271 Brick Backup Allowance | | | | 0 | | | | | | | |
| 41 | Issue #272 Steel Survey Fix @ 11th | | | | 74,992 | | | | | | | |
| 42 | Issue #281 13th Floor Column Cap Fix | | | | 82,941 | | | | | | | |
| 43 | Issue #289 12th Floor Double Angle | | | | 361,566 | | | | | | | |
| | TOTAL | | 0 | 557,827 | 3,679,934 | 0 | 3,850,398 | 10,399 | 0 | (453,137) | 110,885 | (3,718,262) |