



2018 Annual Report

Milwaukee
Global Health
Consortium

Catalyzing connections to promote health equity globally



TABLE OF CONTENTS

TABLE OF CONTENTS 2

LETTER FROM THE PRESIDENT 3

GOALS, ACTIONS, METRICS 4

BY THE NUMBERS 6

2018 DIRECTORS AND ADVISORY COMMITTEE 7

2018 PROGRAMMATIC HIGHLIGHTS 8

MGHC HISTORY 16



“If there is to be global health - social, economic, physical and mental - it is necessary for metropolitan areas with the capacity, to reach out to others to improve health services in ways not intrusive or meddling, and that would also lead to cultural and economic exchanges.”

- William F. O'Donnell, Former Milwaukee County Executive, paraphrased by Dr. John R. Petersen, Founder, Center for International Health

Letter from the President

Dear Friends and Colleagues,

I am honored to present the Milwaukee Global Health Consortium's (MGHC's) 2018 Annual Report. When we redefined our Vision in 2017, our staff and advisory committee took great care in ensuring it represented what we would see were we to accomplish our Mission. We would see "*the greater Milwaukee area working together to find global health solutions which can serve as a model for other communities.*"

Throughout 2018 we identified specific goals, actions, and metrics as a blueprint to make that vision a reality.

First and foremost, we exercise the power of **convening**. We arranged activities and tours for visiting scholars from Asia, mentored six students in the MGHC office, and organized breakout sessions for the Sustainability Summit and Our City of Nations Conference (OCON).

Second, we **leverage** the expertise of our consortium members by aligning activities with their visions. Letters of support aided successful federal grant applications such as UWM's Title VI grant. We organized global health tracks at conferences and developed teams for research funding such as Milwaukee's interdisciplinary team on cultural humility. In these, we became more than the sum of our parts.

Third, we continue to grow as agents and catalysts of **change**. We worked with national and international experts to challenge—and be challenged by—our local health experts such as when Dr. David Williams visited Marquette, Dr. Melanie Tervalon visited UWM, and Dr. Karambu Ringera spoke at OCON. We continued collaborative efforts with our Tanzanian nursing colleagues to strengthen nursing education in Mwanza.

Ultimately, the goals and activities above aim to **transform** our community (and global communities) as healthier, safer places to live. For example, the diverse group of practitioners and academics at OCON developed a Consensus Statement on Best Practices for Refugee Care in Wisconsin as a guide for future efforts. Milwaukee has the highest Rohingya population in the United States; we have a responsibility to be a leader in how we care for our own global populations.

The city, county, and metro area of Milwaukee are **transformed** when our students find internships here, when national experts come and stay, and when our universities offer global health degrees and certificates offered nowhere else in the country. The region is becoming a destination for global health. We are transforming the vibrancy and vitality of southeastern Wisconsin.

In this report you will find details on the above mentioned activities and see how they fit within our unique three-decade history. We are proud of the relationships we have with our consortium members and their *people*, and encourage our members to continue using MGHC to leverage their great work.



Dr. Stephen Hargarten
President & CEO
MKE Global Health Consortium
hargart@mcw.edu

A handwritten signature in black ink, appearing to read "Stephen Hargarten". The signature is fluid and cursive, written on a light blue background.

MILWAUKEE GLOBAL HEALTH CONSORTIUM



THE CONSORTIUM

Founded in 1986, the Milwaukee Global Health Consortium (MGHC) is a 501(c)(3) non-profit organization with the purpose of *catalyzing connections to promote health equity globally.*

MGHC is guided by its **mission**: to foster collaborations which address complex health issues relevant to Milwaukee and the global community. MGHC **envisions** the Milwaukee area working together to find global health solutions, thereby serving as a model for other communities.

To realize its vision, MGHC uses the expertise within its member institutions to maintain four goals, each with affiliated actions and metrics.

MEMBERS



GOALS

1. CONVENE

Become a leading organization that is dedicated to making Milwaukee a destination city for global health students, researchers, practitioners, businesses, and leaders.

2. LEVERAGE

Identify, align, and seek funding for the global health activities and interests of members.

3. CHANGE

Provide and import evidence-based lessons to/from other communities around the world to make communities healthy and safe.

4. TRANSFORM

Become a leading organization that is dedicated to making Milwaukee and other cities the healthiest and safest they can be...a more collaborative Milwaukee and a healthier world.

GOALS AND ACTIONS

METRICS (SINCE BECOMING MGHC, FEB 2017)

1. CONVENE



- ⇒ Host international students or professional groups for training, observations, and tours
- ⇒ Offer internships and volunteer placements for students in MGHC office
- ⇒ Offer field placement mentorship for students in global health or public health degrees/certificates
- ⇒ Market the health-related programs of our member institutions to solicit increased participation at a global scale

2. LEVERAGE



- ⇒ Organize global health tracks at conferences by using members' content expertise
- ⇒ Develop sessions for conferences; identify speakers, convene panels
- ⇒ Lead and contribute to grant applications; develop team
- ⇒ Manage "plug n' play" database of GH activity in Milwaukee (including available degrees, study abroad, and ongoing research initiatives); make connections/introductions when synergy identified

3. CHANGE



- ⇒ Disseminate results from MGHC and members' initiatives through publications and presentations
- ⇒ Adapt our approaches with new ideas from visiting international experts
- ⇒ Import/export skills with visiting scholars and professional exchanges
- ⇒ Facilitate train-the-trainer projects abroad

4. TRANSFORM



This is a result of activities from Goals 1-3. Transformation is evident in:

- ⇒ New policies at departmental, institutional, or governmental levels
- ⇒ Number of global-health-related job placements (in and out of MKE) of alumni who worked with MGHC or participated in members' global health programs
- ⇒ Milwaukee area professionals fighting for health equity after transformative global experiences

Hosted:

- 5 field experience students (MPH and Global Health Certificate)
- 1 paid research internship
- 2 volunteers
- 1 gap-year student experience
- 1 high school student experience

Organized 6 breakout sessions at local conferences

Organized:

- "Global Health & Sustainable Communities" track at Sustainability Summit 2017 and 2018
- Program Committee for Our City of Nations Conference 2018

(All above involved two or more consortium members.)

Mobilized \$75,880 of funding from seven sources for global health related activities

Secured \$4,598 of equipment and book donations for the Tanzania Nursing Education Project

Arranged:

- Clinical observations for 2 visiting scholars
- Hospital tours for 3 visiting groups of nursing students
- 1 long-term nursing training project abroad

Brought in:

- 3 national health equity experts
- 2 international water experts

Published in *The Wisconsin Nurse* and *Rotary Voices* blog

Hosted the event, "When You Return" to direct 50 students' energy towards local organizations' needs

Published 9 reflective blog pieces on MGHC's *Food, Water, People*, creating a community for knowledge sharing

Facilitated 2 job placements in Milwaukee



by the numbers

Who we are

Who we represent

Who we serve ...

PEOPLE

Populations surrounding the southeastern WI base of each member institution (Milwaukee and Ozaukee Counties) total over **1 million** people.

When including other university branches, clinics, and hospitals, our members reach counties totaling over **3.3 million** people or **58%** of Wisconsin's population.

EMPLOYEES

Member institutions employ over **92 thousand** people, including:

- 5,000 academic faculty members
- 20,000 staff and healthcare practitioners
 - 7,000 physicians
- 15,000 government employees



SERVICES

Our members:

- Operate **21** hospitals
- Connect with over **300** clinics
- Serve over **3.5 million** patients annually

Members of the Milwaukee Rotary Club bring connections to **290** more businesses, organizations, and institutions.

STUDENTS

Member institutions include over **46 thousand** students, including:

- over **32,000** undergrads
- almost **1,000** medical students
- almost **12,000** graduate students
- around **3,000** international students from over 90 countries.

Students are attracted by **484** unique programs offered by our members.

Our members are connected to over **300,000** alumni.

2018 BOARD OF DIRECTORS

PRESIDENT - Stephen Hargarten, MD, MPH, Milwaukee Global Health Consortium; Professor, Department of Emergency Medicine; Associate Dean for Global Health, Medical College of Wisconsin

Aurora Health Care

CHAIR - Randall Lambrecht, PhD, President, Aurora Research Institute; Senior Vice President, Aurora Health Care
Kelly Piacsek, PhD, Vice President, Patient-Centered Research, Aurora Research Institute

Marquette University

Michael Lovell, PhD, President
Kimo Ah Yun, PhD, Acting Provost

University of Wisconsin-Milwaukee

Mark Mone, PhD, Chancellor
VICE CHAIR - Joan Prince, PhD, Vice Chancellor

Medical College of Wisconsin

John Raymond, MD, President
SECRETARY - Kathy Kuhn, Vice President, Government and Community Relations

Milwaukee County Government

Chris Abele, Milwaukee County Executive

City of Milwaukee Health Department

Patricia McManus, PhD, Health Commissioner

Concordia University of Wisconsin

William Cario, PhD, Provost and Chief Academic Officer
Dean Arneson, PharmD, PhD, Academic Dean, School of Pharmacy

Froedtert Hospital

Cathy Buck, RN, MS, President, Froedtert Hospital
Allan Gray, PhD, Vice President Perioperative Services, Froedtert Hospital

Rotary Club of Milwaukee

Kathie Eilers, Past President, Rotary Club of Milwaukee
Mary McCormick, Executive Director, Rotary Club of Milwaukee

International Institute of Wisconsin

Alexander Durtka, President and CEO, International Institute of Wisconsin; State Coordinator, Wisconsin Sister Cities International

Sixteenth Street Community Health Centers

Julie Schuller, MD, MPH, President and CEO

At-Large (Voting) Director

TREASURER - Anthony Pennington-Cross, Professor of Finance, Marquette University

At-Large (Non-voting) Director

Michael Harsh, Former Vice President, Chief Technology Officer, GE Healthcare

2018 PROGRAM ADVISORY COMMITTEE

The Program Advisory Committee shall serve as a vehicle and forum for the planning, development, coordination and implementation of MGHC programs and activities with its member institutions.

CHAIR - Dean Arneson, PharmD, PhD, Dean of the School of Pharmacy, Concordia University

Stephen Hargarten, MD, MPH

Sarah Ehlinger Affotey, MPhil, Program Manager, Milwaukee Global Health Consortium

Sanjib Bhattacharyya, PhD, Laboratory Director, City of Milwaukee Health Department

Anne Dressel, PhD, CFPH, MLIS, MA, Director, Center for Global Health Equity, College of Nursing, University of Wisconsin - Milwaukee

Lars Olson, PhD, Associate Professor, Biomedical Engineering, Marquette University

Christine Schindler, PhD, RN, Clinical Assistant Professor, Marquette University

Peter Havens, MD, MS, Program Director, HIV, Children's Hospital of Wisconsin; Professor, Pediatrics Infectious Disease, Medical College of Wisconsin

Joyce Sanchez, MD, Associate Professor, Infectious Disease, Medical College of Wisconsin

Jim Sanders, MD, MPH, Associate Professor, Family and Community Medicine, Medical College of Wisconsin

Rebekah Walker, PhD, Assistant Professor, General Internal Medicine, Medical College of Wisconsin

Elizabeth Bordeleau, RN, Orthopedic Nurse, Froedtert McKinley Health Center

Balaji Narayanan, MS, Process Improvement Specialist, Froedtert Department of Quality and Process Improvement

Carolyn McCarthy RN, NP, Family Practice Nurse, Aurora Walker's Point Community Clinic

Christopher Rasch, Director of Government and Community Relations, Sixteenth Street Community Health Centers

Annamarie Carlson, Special Program Coordinator, International Institute of Wisconsin

Gina Graham, MPH, Cascade Consulting, LLC

2018 Programmatic Highlights



Student Activity

With the rising popularity of global health among students worldwide, MGHC believes mentorship and workforce development are valuable parts of its goals to *Convene* and *Transform*.

Throughout summer and fall 2018, MGHC offered field experiences and mentorship for several Milwaukee area students:



Ahmed Mohammed-Ali (UWM BA in Healthcare Administration Candidate and Global Health Certificate Candidate) served as the Our City of Nations (OCON) Outreach Coordinator. He researched local and global current events related to refugee health, shared write-ups on social media, and planned a student session for the OCON conference. Through his experience, Ahmed obtained an internship with the State of Wisconsin Refugee Office.



Alex Olp (UWM Masters in Healthcare Administration Candidate) researched consortia around the United States to compare activities, membership, and funding structures.



Keoni Bailey (Marquette BA in Biomedical Sciences Candidate) worked with the Aurora Research Institute to assess cervical cancer and HPV screening rates among refugee women in Wisconsin.



Mireille Perzan (UWM Masters in Public Health Candidate) conducted an integrative literature review on factors inhibiting HPV vaccination rates among refugees in the United States.



Austin Schmidt (Recent DSHA High School graduate) conducted a survey of individuals and organizations in the Milwaukee area that interface with refugee and immigrant populations.

MGHC is set to host an additional three students (masters and undergraduate) during the 2019 spring and summer terms.

Our City of Nations Conference

Arriving, Surviving, Thriving: Journey from New to Neighbor

After 15 months of planning by a grassroots, self-organizing group of professionals from medicine, social services, and academia, Our City of Nations (OCON) Conference #3 was held in December 2018 at Concordia University of Wisconsin.

Over the course of two days, over 200 people from different backgrounds, professional sectors, educational degrees, social service agencies, academic institutions, and cultural familiarities gathered together with the single goal of strengthening our collective capacity to extend social services to our refugee neighbors and to provide a small measure of relief to their efforts in gaining stability for themselves and for their families.

Breakout session included refugee voices and involved sectors complementary to health such as the arts and entrepreneurship. Attendees learned about toxic stress related to immigration status, wild rice farms in Mequon, operating a Peruvian food truck, and Teaching Today's Students for Tomorrow's America.

MGHC hosted a student session on day one. Students from Milwaukee Public High Schools, UW-Milwaukee, Medical College of WI, UW-Madison, and Concordia University presented posters, creative works, and display tables. They were able to network with two inspirational professionals who opened the session with stories from their lives. These were Dr. Karambu Ringera, founder of International Peace Initiatives, Kenya, and Dr. Julie Parve, founder of Hope Without Borders.



"Memory Drawings" - an exhibition at OCON3

Works in the exhibit depicted Bhutanese refugee experiences of living in camps in Nepal for over twenty years. The Bhutanese have been resettling in Madison since 2009 and into early 2018. Bhutanese resettlement has now nearly come to an end, as camps have slowly cleared out and been closed down. Thirteen artists contributed to "Memory Drawings", all of whom resettled in Madison sometime during the past seven years. There are nearly 400 former Bhutanese refugees who now call Madison home. They work in many sectors and participate in the civic life of the city in a variety of ways.



Dr. Jim Sanders (Associate Professor at the Medical College of Wisconsin) sits with keynote speakers Dr. Richard Mollica (Director of the Harvard Program in Refugee Trauma) and Barbara Day (Domestic Resettlement Section Chief in the Office of Admissions, Bureau of Population Refugees and Migration at the U.S. Department of State).

OCON3

OUR CITY OF NATIONS
CONFERENCE



Dr. Karambu Ringera suggests using the word “empowerdness” instead of “empowerment” to recognize power comes from within, not from those trying to help.



Dr. Sebastian Sempijija, OCON co-chair



Five artists from a Madison-based Bhutaneese artist group shared the stories behind their drawings with the help of a translator.



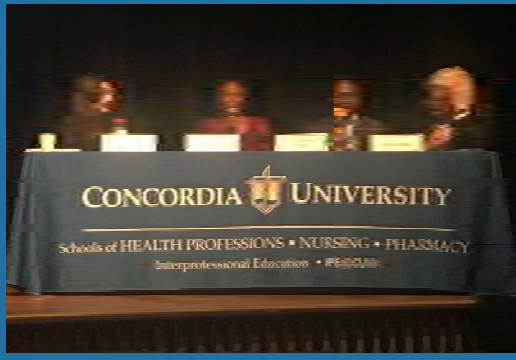
“Malala Yousafzai”
72”x48” Oil Pastel
Created by South Division High School students



Elodie Ontala and Sean Kiebzak of Arts@Large explain social-emotional learning through the arts as they discuss pilot results of the “Fabric of MKE” initiative.



In one of the most highly attended breakout sessions, Dr. Lisa Edwards and Jacki Black from Marquette explains the stress on a student’s body when dealing with uncertainty related to DACA.



Bojana Zoric Martinez (Refugee Programs Section Chief, WI Department of Children and Families) provides a local perspective with Dr. Sebastian Sempijija, Dr. Karambu Ringera, and Dr. Richard Mollica.



Officer Jared Prado of the Madison Police Department explains that in a community, “What they feel, we feel.”

What's ahead...

OCON has become a movement. Attendees from each of the three OCON conferences have asked for more events and more frequent access to educational resources.

MGHC plans to work with the State Refugee Programs Section office to develop an OCON calendar of events to coordinate the work of the many organizations working with immigrants and refugees in Milwaukee. There has been talk to develop a monthly mental health webinar series, and medical videos in the Rohingya language.

Research Team Formed on Cultural Humility

Project Description:

Funded by a UW-Milwaukee Collaborative Research Team Development award, a group of Milwaukee area researchers and practitioners convened based on their interest in issues of culture, race, and ethical practices in healthcare and health research (including non-clinical health related professions). The team, interested in social justice, equity, and global health programs is still developing its vision and will likely take up multiple aspects of "cultural humility." Over the next five years, the team intends to explore themes on *education* (using study abroad to teach cultural humility; revamping a "cultural diversity in healthcare" class; offering continuing education for professionals), *community* (expanding the team to a network of practitioners around the city; conducting story-based research with a Milwaukee lens; connecting the practice of cultural humility to health outcomes; health navigation).

In November 2018, the team hosted Dr. Melanie Tervalon to consult based on her research in cultural humility. Melanie Tervalon, MD, MPH, has over 30 years of experience in health care as a program director, adviser, teacher, clinician, strategist and consultant. Based in Oakland, CA, her work focuses on designing original approaches in the field of multicultural health with an emphasis on learning and education within the health and service delivery professions. After consulting with the Milwaukee based research team Dr. Tervalon led a discussion open to the public. She explained the important distinction between teachings of competency (often emphasized in health professions) versus practicing humility:



Above: Dr. Melanie Tervalon delivers a public talk on what led to her work on cultural humility.

Competency

Endpoint
 Categorical learning about groups
 Mastery/expert
 Knowledgeable
 All knowing
 Dominant party makes decisions
 Hierarchy
 Rigid
 Linear
 Technical

Humility

Ongoing/fluid
 Self-reflection
 Learner/student
 Teachable
 "I don't know"
 Shared decision making
 Partnership
 Flexible and dynamic
 Reciprocity
 Personal

While Dr. Tervalon noted that mastery of medical techniques are obviously necessary, when it comes to interacting with those of other races and cultures, an approach of cultural humility is vital for fostering health equity. As one Milwaukee area physician attendee summarized cultural humility's connection to patient-centered care, "If you don't know, ask; and you'll almost never know." An attendee from Catholic Charities reflected on the talk in a blog piece for MGHC's *Food, Water, People*.

Funder: UW-Milwaukee Office of Research

Timeline: 2018-2019, with the expectation team develops a 5-year plan

Team Members:

HEIDI LUFT, Assistant Professor, College of Nursing, UW-Milwaukee

ANNE DRESSEL, Assistant Professor, College of Nursing, UW-Milwaukee

MELINDA KAVANAUGH, Assistant Professor, School of Social Welfare, UW-Milwaukee

RACHEL BLOOM-POJAR, Assistant Professor, English Department, UW-Milwaukee

LUCY MKANDAWIRE-VALHMU, Associate Professor, College of Nursing, UW-Milwaukee

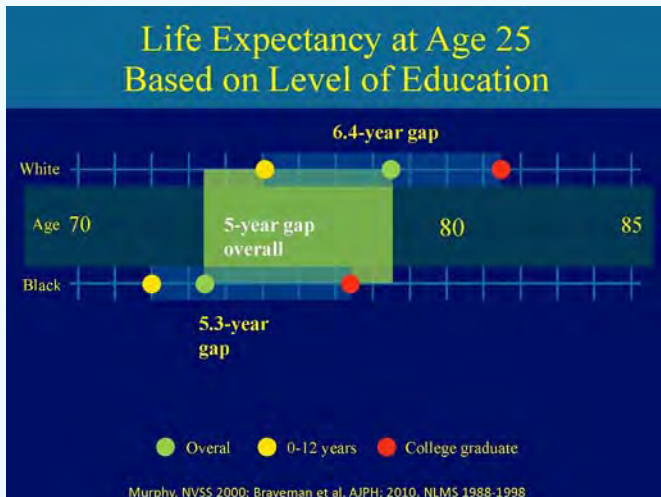
CAROLYN MCCARTHY, Nurse Practitioner, Aurora Walker's Point Community Clinic

MIRTHA SOSA PACHECO, Research Program Coordinator, United Community Center

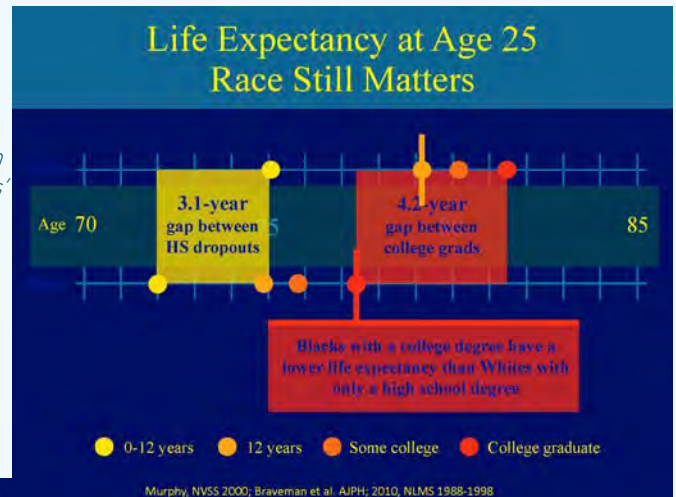
SARAH EHLINGER AFFOTEY, Program Manager, Milwaukee Global Health Consortium

David Williams: Health Equity in Milwaukee

an event of the Marquette Forum



Slides from Dr. Williams' talk (3/27/18)



We Are Not the Healthiest

- U.S. ranks near the bottom of industrialized countries on health, and we are losing ground
- 1980 = 11th on Life Expectancy
- 2014 = 35th on Life Expectancy
- U.S. Ranked behind South Korea, Greece, Cyprus, Cuba and Lebanon
- And it is not just the minorities doing badly!
- In 2014, White America would be = 34th
- In 2014, Black America would be 96th

Wrapping up a year of events focused on the Marquette Forum theme *Fractured: Health and Equity*, Professor of Public Health at the Harvard T.H. Chan School of Public Health, Dr. David Williams presented a keynote lecture titled "Making Milwaukee Healthier for All: What Each of Us Can Do." Dr. Williams discussed years of research showing disparities between the health of the United States and other industrialized nations (i.e. the US ranked 35th in life expectancy in 2014), and within populations in the United States.

In one of his main points, Dr. Williams noted that the difference in life expectancy between white college graduates

and white high school graduates (6.4 years) is larger than the overall black-white life expectancy gap (5.3 years). However, blacks with a college degree have a lower life expectancy than whites with only a high school degree, signifying that race still matters.

The Milwaukee Global Health Consortium worked with Marquette's Office of Community Engagement to host a luncheon with Milwaukee area leaders who considered Milwaukee's role in global discussions about health equity. Leaders shared insights based on their personal experiences, and had the chance to discuss Dr. Williams' groundbreaking work in developing the "Everyday Discrimination Scale."

Representatives from Marquette, Medical College of WI, Aurora Health Care, UW-Milwaukee, City of Milwaukee Health Department, Bader Philanthropies, Milwaukee Health Services, and Sixteenth Street Community Health Centers met with Dr.



Other 2018 Activity

Global Health Panels at Sustainability Summit

MGHC organized the global health track at the 15th Annual Sustainability Summit held at the MATC downtown campus on April 11-12. The track focused on two themes: building sustainable communities and developing future leaders. MGHC organized two panel sessions:

Bridging Water and Art: a Path to Healthy Communities

This session highlighted local collaborative art projects around water and health. Panelists represented the Milwaukee Water Commons, Marquette University Haggerty Museum of Art, Reflo Sustainable Water Solutions, and Arts@Large.



Left: Milwaukee Water Commons artist-in-residence, Melanie Ariens, shares her "Water Cycle" creation.



Above: Erin Richards, Education Reporter at the Milwaukee Journal Sentinel, discusses the importance of international experiences for professionals and the value of learning from counterparts in other countries.

Global Scholarships: Opportunities to Build Local Leaders

Highlighting a variety of scholarship opportunities, the session emphasized how globally-minded programs have sustainable effects by developing leaders who are better equipped for local engagement following their experiences. Panelists discussed opportunities with the Peace Corps, Rotary International, Fulbright, and the Marquette Trinity Fellow Program.

Contributions to "Food, Water, People"

In 2018, students and faculty from Concordia, Marquette, Aurora Walker's Point published to MGHC's online blog.

Food, Water, People focuses on connections – connections between people, societies, disciplines, and countries. These connections frame our understanding of global health problems and how we approach solutions. With particular emphasis on the environment, social determinants of health, and policy, this blog bridges theory and practice to explore how global health issues are relevant to all of us.

Blog posts are found at:

www.mkeghc.org/blog-food-water-people

MGHC Continues Consultation on Tanzania Nursing Education Project

Though no trips were taken in 2018 to MGHC's partner schools in Mwanza, Tanzania, Milwaukee experts continued to consult faculty on implementation of the previous year's training. Consultation included using examination OSCEs to make learning OSCE's, strategizing on funding schemes, developing lists of skills lab equipment, and providing instruction on using birthing manikins. Project evaluation will take place in February, 2019.

Partnership Creates Rohingya YouTube Channel

With the recognition that Milwaukee has the highest Rohingya population in the U.S., a group of practitioners and academics came together to address the complexities of providing care for this population.

Based on an observation that Rohingya face complex cultural and linguistic barriers to medical treatment, especially related to medication administration, MGHC, MCW, Aurora Walker's Point, and Concordia University partnered with Hayat Pharmacy to develop a YouTube channel dedicated solely to health issues in the Rohingya community. In 2019, the group will translate videos from the NIH as well as develop new videos.





MILWAUKEE GLOBAL HEALTH CONSORTIUM

HISTORY

1985 - Milwaukee County created the Milwaukee International Health Training Center (MIHTC) Project Committee and allocates \$100,000 in tax levy support for its work. John R. Petersen, M.D., Committee Vice Chair, and Frederick Tavill, M.D., D.P.H., Medical Director, were recruited and began their pivotal, formative roles.

1986 - USAID awarded \$425,000 to Milwaukee County in support of MIHTC.

1987 - MIHTC created affiliation agreements with various medical and educational institutions in Milwaukee County, including Marquette University, the Medical College of Wisconsin, the Milwaukee Area Technical College, the University of Wisconsin - Milwaukee and S.C. Johnson & Son, to foster cooperative relationships for the provision of health education and training services in emerging and developing countries.

1988 - MIHTC, working in collaboration with the Malawi and Zimbabwe Ministries of Health and with the United Nations Children's Fund (UNICEF) conducted extended training workshops in Malawi focused on primary healthcare development, and in Zimbabwe on planning and management of health science library and learning resource centers. In September, MIHTC convened an international health conference, titled "Partners in an Alliance for Global Health: Local, National, and International Perspectives," with James Grant, Director of UNICEF, as the keynote speaker.

1989 - USAID awarded MIHTC a grant extension of \$750,000. MIHTC entered into an affiliation agreement with Children's Hospital of Wisconsin, which was to become a primary benefactor over the coming decades.

1990 - MIHTC began healthcare training programs in Guatemala, Malawi, Colombia, Haiti, and the Bahamas.

1992 - MIHTC received a \$2,394,965 multi-year USAID grant award for an Emergency Medical Services training program in Kraków and Białystok, Poland.

1993 - MIHTC began healthcare training programs in Kenya and Gaza.

1995 - MIHTC sponsored a groundbreaking Polish - American Emergency Medical Services Congress in Warsaw, attended by delegates from the U.S., Poland, Belarus, Lithuania, and Estonia. AIHA announced it would use the Learning Resource Center (LRC) partnership methodology established by MIHTC to support many other projects.

1998 - Milwaukee County privatized MIHTC and initiated a Memorandum of Understanding with Froedtert Memorial Hospital and Children's Hospital of Wisconsin for the creation of MIHTC as a separate, not-for-profit entity. Over the next few years, the list of consortium members grew to include Milwaukee County, Froedtert Memorial Hospital, Children's Hospital and Health System, Marquette University, the University of Wisconsin - Milwaukee, the Medical College of Wisconsin, the BloodCenter of Wisconsin, and GE Healthcare.

1999 - MIHTC was awarded an AIHA grant for a primary healthcare / healthy communities program in the Mtskheta - Mtianeti region of the Republic of Georgia and, over the next several years, transformed the existing system into a family medicine primary care model, including the expansion of medical, nursing, and health management capacity to serve the needs of the region.

2001 - MIHTC was awarded a grant by the Meehan Family Foundation of Milwaukee, Wisconsin, to construct a new Family Medicine Clinic and Regional Training Center in Mtskheta, with additional funding from the Georgian Social Investment Fund, the Mtskheta community, and a USAID Energy Efficiency grant.

2002 - MIHTC was awarded a USAID supplementary grant to expand activities to Kazbegi, Tianeti, and Akhagori. That same year, AIHA awarded MIHTC with a noncompetitive grant to assume responsibility for a rural primary healthcare project in the Lori Marz region of the Republic of Armenia, in collaboration with the Armenian Ministry of Health.

2003 - Due to its success in establishing a Lori Marz Health Training Center as a regional family medicine training venue, the Armenian project was awarded a two year extension by AIHA. Over the next two years, the curriculum developed by CIH was categorized to ensure compatibility with the Government of Armenia's United Family Medicine Curriculum. The courses offered at the Health Training Center were accredited, and trainees obtained the status of family physicians. Soon thereafter, Mark E. Anderson, a former MIHTC Board member and top executive with Project HOPE and Children's Hospital of Wisconsin, was hired as MIHTC Executive Director. Upon his recommendation, MIHTC received a new name to more accurately represent the comprehensive array of its efforts and activities - the Center for International Health (CIH). At this time, a management services agreement was established between CIH and Children's Hospital and Health System, which enabled CIH to contract for administrative services (including financial management) in an effective and cost-efficient manner.

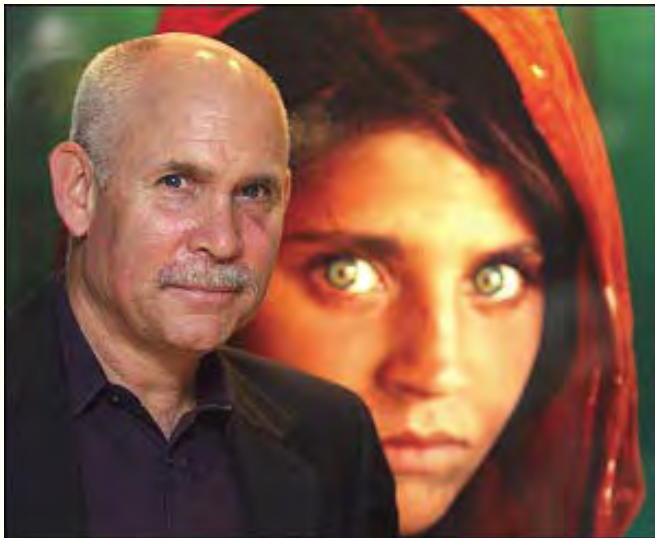
2004 - Mark Anderson assumed the role of CIH President and CEO. CIH developed a USAID International Food Relief Partnership (IFRP) for Kenya. In June, the Milwaukee Journal Sentinel published an interview with Mr. Anderson about the success of the food program. Later that year, CIH joined Wisconsin Governor Jim Doyle's trade mission to China and, in conjunction with the Medical College of Wisconsin, executed a Memorandum of Understanding with Shanghai's Xin Hua Hospital and Jiao Tong University School of Medicine and the City of Shanghai for the development of Emergency Medical Services.

2005 - CIH sent a team to Kabul, Afghanistan, which has one of the highest infant and maternal mortality rates in the world, as part of a project to improve medical practices at the Rabia Balkhi Hospital, Afghanistan's largest hospital for women. CIH also completed IFRPs in the Republic of Georgia, the Republic of Armenia, Kenya, and Zambia. Largely through the work of Dr. Peter Havens, Professor of Infectious Diseases in the Department of Pediatrics at the Medical College of Wisconsin, and in collaboration with the Christian Health Alliance of Kenya (CHAK), CIH facilitated a pediatric HIV/AIDS teaching and training conference and workshop in Nairobi, Kenya. The workshop was sponsored by the Miller Coors Foundation and led to the establishment of an international policy statement, written by a committee chaired by Dr. Havens and endorsed by 19 international pediatric organizations involved in HIV/AIDS diseases, regarding increasing antiretroviral drug access for children infected with HIV.

2006 - CIH was awarded an AIHA grant to improve the quality of pediatric antiretroviral services in Zambia through pharmacist training at the Pediatric Antiretroviral Therapy (ART) Centers of Excellence in Lusaka and Livingstone, with funding also provided by the Centers for Disease Control (CDC).

2007 - CIH received the President's Volunteer Service Awards, which recognized individual work in the AIHA projects in the Republic of Georgia, the Republic of Armenia, and Zambia. Special lifetime achievement awards were presented to Dr. Frederick Tavill and Dr. John R. Petersen for the key roles they played in establishing CIH.

MGHC HISTORY CONTINUED...



Steve McCurry with his portrait of "Afghan Girl with Green Eyes," which originally appeared in National Geographic magazine.

CIH hosted McCurry at the event, "Human Reflection, the Photo Symphony" in 2008.

2008 - CIH was awarded the International Institute of Wisconsin's Organizational Award, recognizing CIH's contributions towards international understanding and cultural appreciation. In October, CIH hosted its first major fundraising event - the world premiere of "Human Reflection: the Photo Symphony," a mixed media concert which presented the photographs of National Geographic photographer Steve McCurry accompanied by original symphonic music performed by Sweden's premier saxophone player, Johan Stengård.

2009 - Milwaukee County re-established its Sister Cities relationship with Buffalo City, South Africa to foster economic, health and cultural exchanges between the two communities, with CIH facilitating the exchanges.

2010 - Sister Cities International awarded Milwaukee County a two-year \$125,000 African Urban Poverty Alleviation Program (AUPAP) grant to develop a project, managed by CIH, that addresses sanitation, health and/or water issues in its African Sister City. The selected project involved various improvements to the Aspiranza Health Clinic in an impoverished area of Buffalo City. CIH began discussions regarding the creation of the Nelson Mandela Children's Hospital in Johannesburg, South Africa, with CIH developing and implementing extensive training programs for hospital staff and medical personnel.

2011 - CIH celebrated its 25th anniversary and initiated the John R. Petersen Memorial Lectureship in Global Health Affairs, launching the inaugural event with award-winning, internationally renowned journalist Laurie Garrett. CIH further developed an MOU with Shanghai's Xin Hua Hospital and Jiao Tong University School of Medicine and the City of Shanghai to expand the exchange program.

2012 - CIH's pediatric HIV/AIDS pharmaceutical training program in Zambia was extended for a seventh year. As the program advanced, it transitioned from short-term, targeted training initiatives into long-term, academic opportunities, working with Concordia University's School of Pharmacy. In August, after nearly a decade of leading CIH, Mark Anderson resigned from his position as CIH President and CEO in order to accept the position of President and Chief Administrative Officer for a new medical campus development project being undertaken by the University of Florida - Shands Health Care System in Jacksonville, Florida. Terrence Cooley, who was involved with CIH as a member of the Board of Directors since its inception in 1986, was appointed interim President and CEO to ensure the smooth continuation of CIH's ongoing and pending programs.

2013 - Four pharmacists from Zambia participated in trainings at Concordia, AIDS Resource Center of WI, Children's Hospital of WI, Froedtert Hospital, Wheaton Franciscan and Bread of Healing. CIH also hosted another exchange with Xin Hua Hospital with two pharmacists participating.

2014 - Dr. Stephen Hargarten was appointed President and CEO of CIH. The Board of Directors met to develop a strategic plan. For its work with the Milwaukee County/Buffalo City Sister Cities Partnership and the resulting Aspiranza Primary Clinic Expansion and Renovation Project, CIH and its partners receive the 2014 Innovation Award for Humanitarian Assistance.

2015 - CIH in partnership with the Rotary Club of Milwaukee hosted former Governor and Secretary of the U.S. Department of Health and Human Services Kathleen Sebelius at the War Memorial for the Dr. John Peterson lectureship. The Zambia Pharmacy training exchange program is wrapped up successfully. CIH successfully closed out its Pharmaceutical Pediatric HIV/AIDS Training Partnership in Zambia. The Program Advisory Committee, formed in 2014, met to discuss future programming.



Former Secretary of Health and Human Services, Kathleen Sebelius

2016 - CIH continued to contribute to local Global Health events. First CIH participated in the Milwaukee's 13th Annual Sustainability Summit, with Dr. Hargarten giving a keynote address on "Global Health: The Ultimate Sustainability Challenge." Five representatives from the Center's consortium member institutions were speakers for complementary panel discussions at the Summit. CIH again partnered with the Rotary Club of Milwaukee to host Lieutenant General Patricia Horoho, the first female and first Nurse Corps Officer to be US Army Surgeon General and Commanding General of the US Army Medical Command. Lt. Gen. Horoho spoke on "The Role of the Military in Global Health." To ensure consortium members continue to receive value from the organization, CIH forms a membership committee.

2017 - CIH Board of Directors voted to change the organization's name to the Milwaukee Global Health Consortium (MGHC). Nursing educators from Concordia University and University of Wisconsin-Milwaukee collaborate on a grant from the Touch Foundation to strengthen clinical skills acquisition in nursing students at Bugando Medical Center and Catholic University of Health & Allied Science, Mwanza, Tanzania. MGHC hosts the Sierra Leone Minister of Water Resources to meet with water experts around Milwaukee.

2018 - Sixteenth Street Community Health Centers joins MGHC as an affiliate member. MGHC hosts six students throughout the year for volunteer experience and academic credit. MGHC works with the State of WI Refugee Programs Section to develop the program for Our City of Nations conference held at Concordia University.

Financial Statements

MGHC is committed to financial transparency. Statements are available upon request.



**GLOBAL
HEALTH
CONSORTIUM**

1020 North 12th Street
Milwaukee, Wisconsin 53233 USA
+1-414-219-5488

www.mkeghc.org | www.facebook.com/mkeghc | www.twitter.com/mkeghc