



**Rosen Suzuki of Milwaukee**  
Photo 5-- of existing SUZUKI sign with Rosen  
Nissan in background

0403915 photos

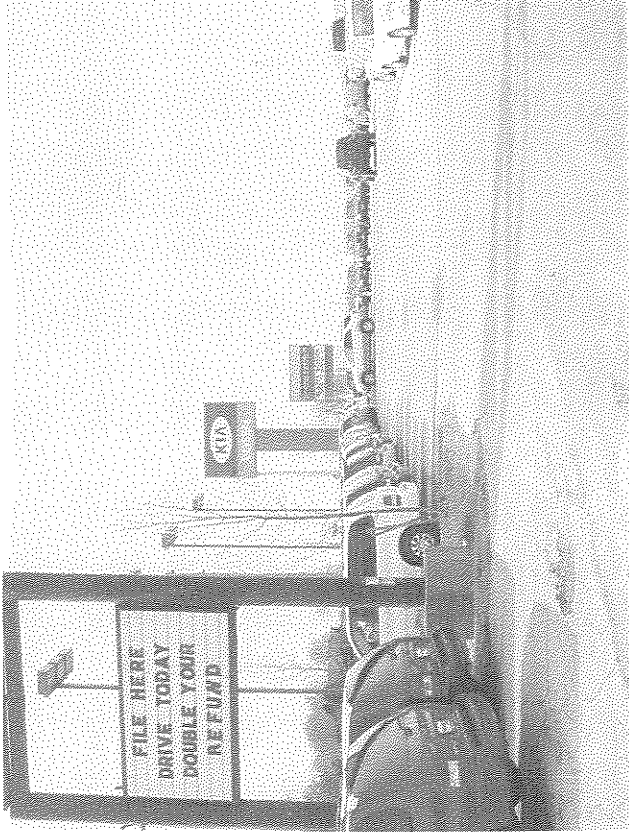


**Rosen Suzuki of Milwaukee**  
Photo 6-- existing SUZUKI site sign with existing  
KIA building in the background



**Rosen Suzuki of Milwaukee**

Photo 7 -- existing SUZUKI sign looking south along east property line with signs in background



**Photo 8**

Photo 8-- existing site signs along east property line along S 27th Street



**Rosen Suzuki of Milwaukee**  
Photo 9--- existing landscaping looking north along  
east property line adjacent to S 27th Street



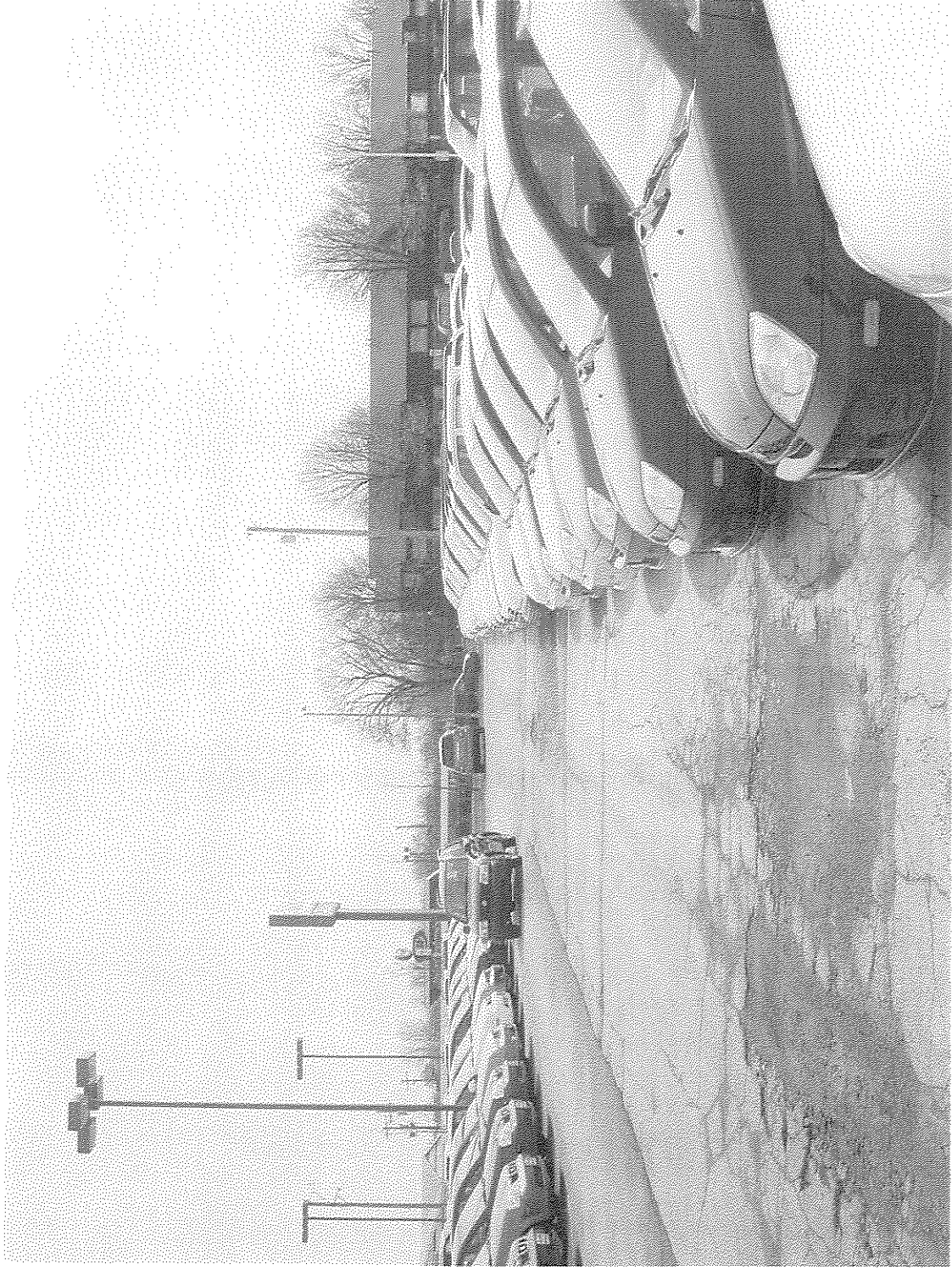
**Rosen Suzuki of Milwaukee**  
Photo 10-- existing parking aisle looking west from  
east property line adjacent to S 27th Street



**Rosen Suzuki of Milwaukee**  
Photo 11-- existing parking aisle looking west from  
east property line adjacent to S 27th Street



**Rosen Suzuki of Milwaukee**  
Photo 12-- existing parking aisle looking west to  
future SUZUKI building

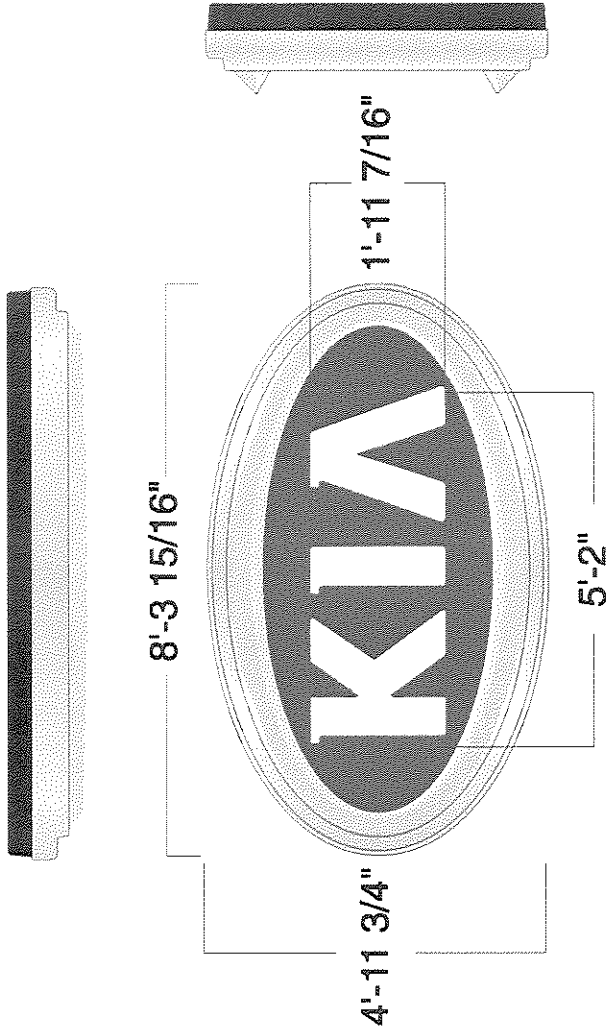


**Rosen Suzuki of Milwaukee**  
Photo 13--- existing parking aisle looking east from  
future SUZUKI building





**Rosen Suzuki of Milwaukee**  
Photo 14-- from southwest corner of KIA building  
aligned to front wall future SUZUKI building



KWL-4

Total Square Footage= 32.65sq'

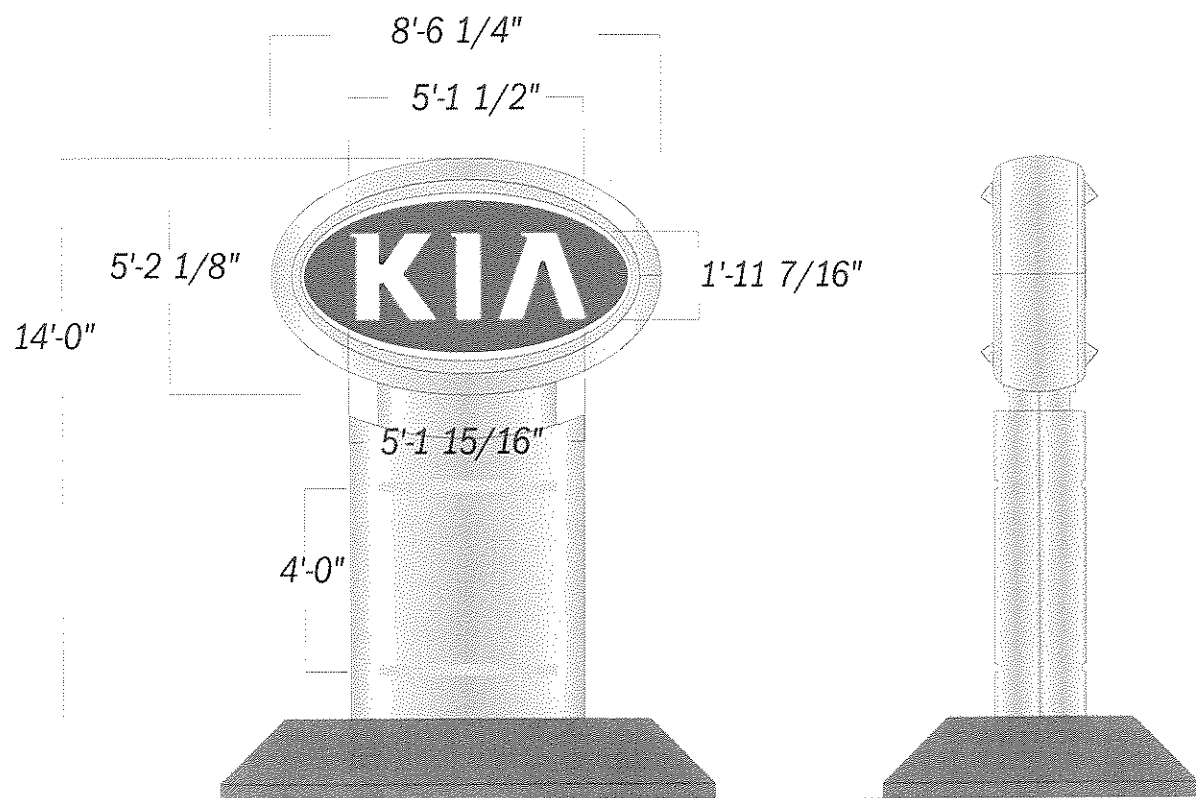
Account KIA  
 Project Title KWL-4  
 Scale 1:32  
 Date Created 23 OCT 2003

Drawn By J Allington  
 IP Rep. D Estep  
 Approved By  
 Date Revised

All ideas, plans or arrangements indicated in this drawing are copyrighted and owned by ImagePoint and shall not be reproduced, used by or disclosed to any person, firm or corporation for any purpose whatsoever without written permission of ImagePoint.

**ImagePoint**

PO Box 59043  
 Knoxville, TN 37950-8043  
 1-800-444-7446  
 www.imagepoint.com



KPS-4 (14'-0" OAH)  
 Total Square Footage =35sq'

Account KIA

Drawn By J.DiLuzio

Project Title KIA KPS-4 14ft

IP Rep. K. Boling

Scale 1:48

Approved By

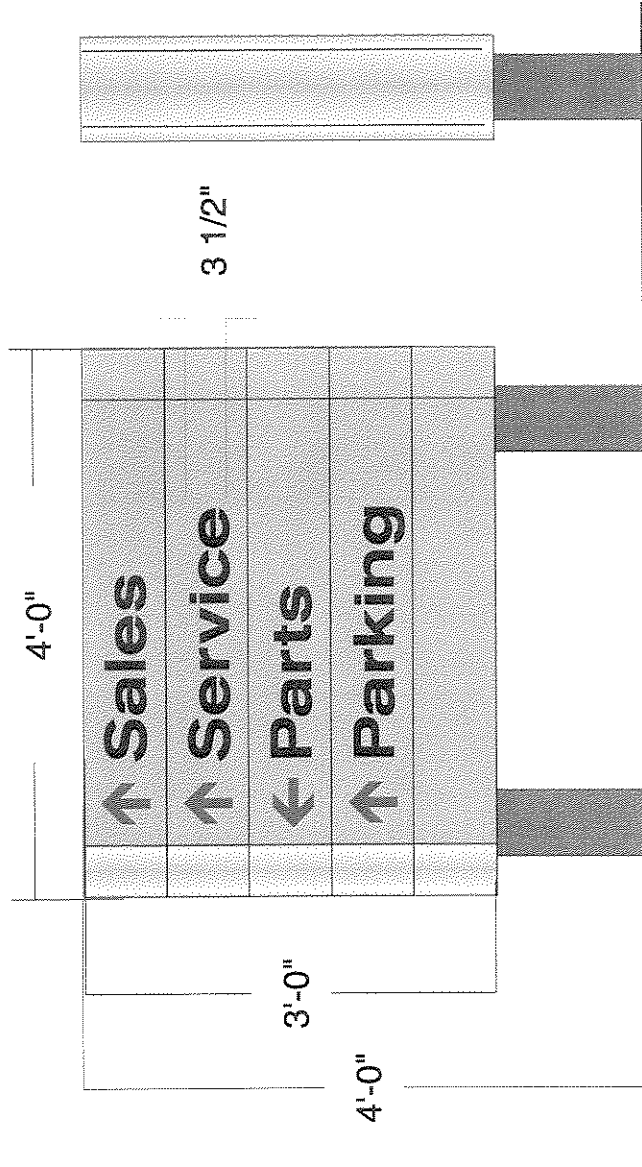
Date Created 26 MAR 04

Date Revised

All ideas, plans or arrangements indicated in this drawing are copyrighted and owned by ImagePoint and shall not be reproduced, used by or disclosed to any person, firm or corporation for any purpose whatsoever without written permission of ImagePoint.

**ImagePoint™**

PO Box 59043  
 Knoxville, TN 37950-9043  
 1-800-444-7446  
 www.imagepoint.com



Total Square Footage= 12sq'  
 \*(Individual sign text will vary)

Account KIA  
 Project Title KDR-12  
 Scale 1:16  
 Date Created 23 OCT 2003

Drawn By J Allington  
 IP Rep. D Estep  
 Approved By  
 Date Revised

All ideas, plans or arrangements indicated in this drawing are copyrighted and owned by ImagePoint and shall not be re-produced, used by or disclosed to any person, firm or corporation for any purpose whatsoever without written permission of ImagePoint.

PO Box 59043  
 Knoxville, TN 37950-9043  
 1-800-444-7446  
 www.imagepoint.com

**ImagePoint**<sup>™</sup>

15'-9 3/8"

14'-9 3/8"

3'-0"

2'-0"

# SERVICE

Account KIA Drawn By J Allington  
 Project Title KWS-24\_Service IP Rep. D Estep  
 Scale 1:24 Approved By  
 Date Created 14 OCT 2003 Date Revised

All ideas, plans or arrangements indicated in this drawing are copyrighted and owned by ImagePoint and shall not be reproduced, used by or disclosed to any person, firm or corporation for any purpose whatsoever without written permission of ImagePoint.

PO Box 59073  
 Knoxville, TN 37950-9073  
 1 800 474 7446  
 www.imagepoint.com

**ImagePoint**

**Pg 1 of 1**