



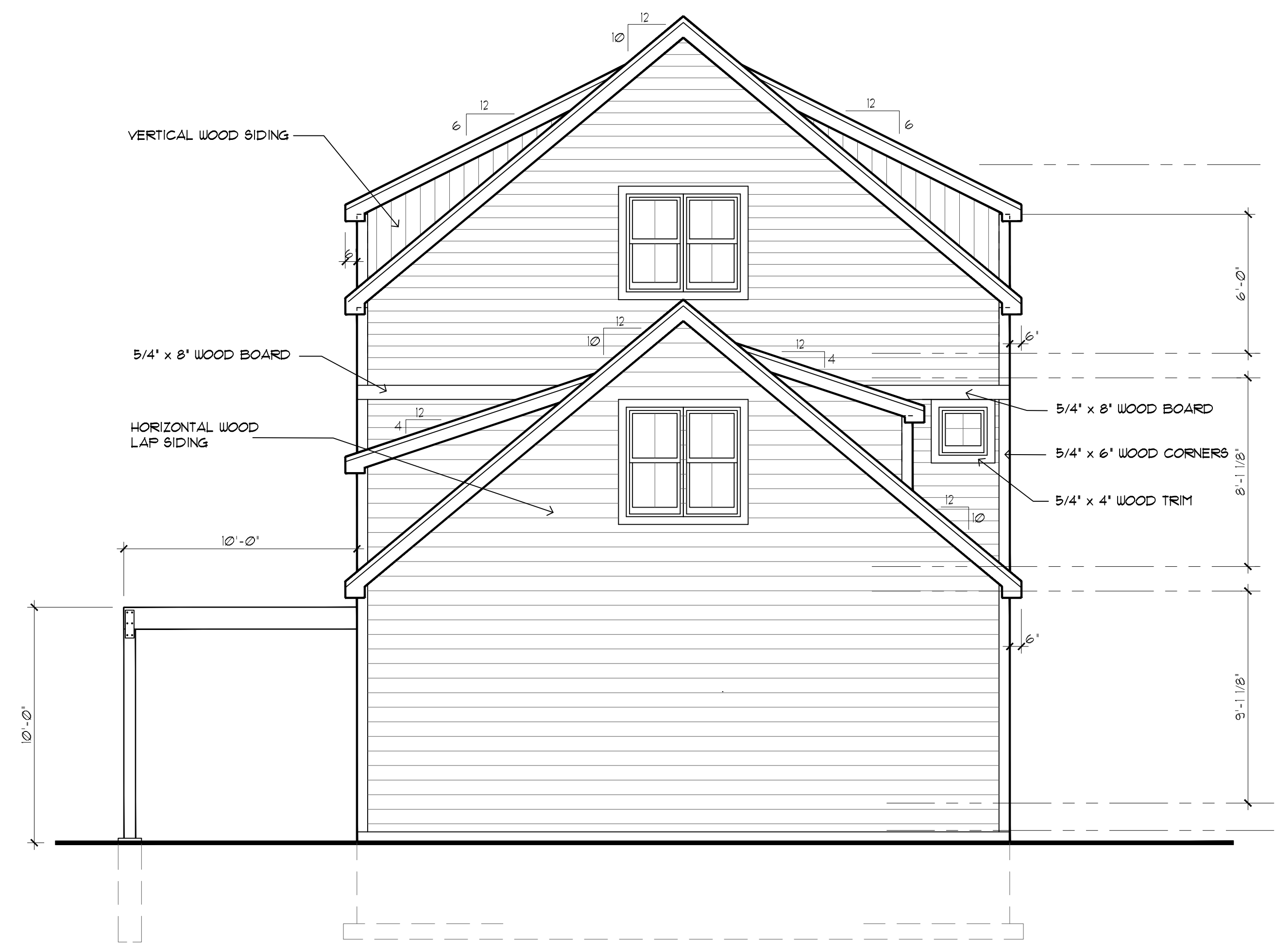
ESPIRE HOMES INC.
 530 Hartbrook Dr.
 Hartland, WI 53029
 262-746-2000

REVISIONS
 ARCH REVIEW 5-19-21

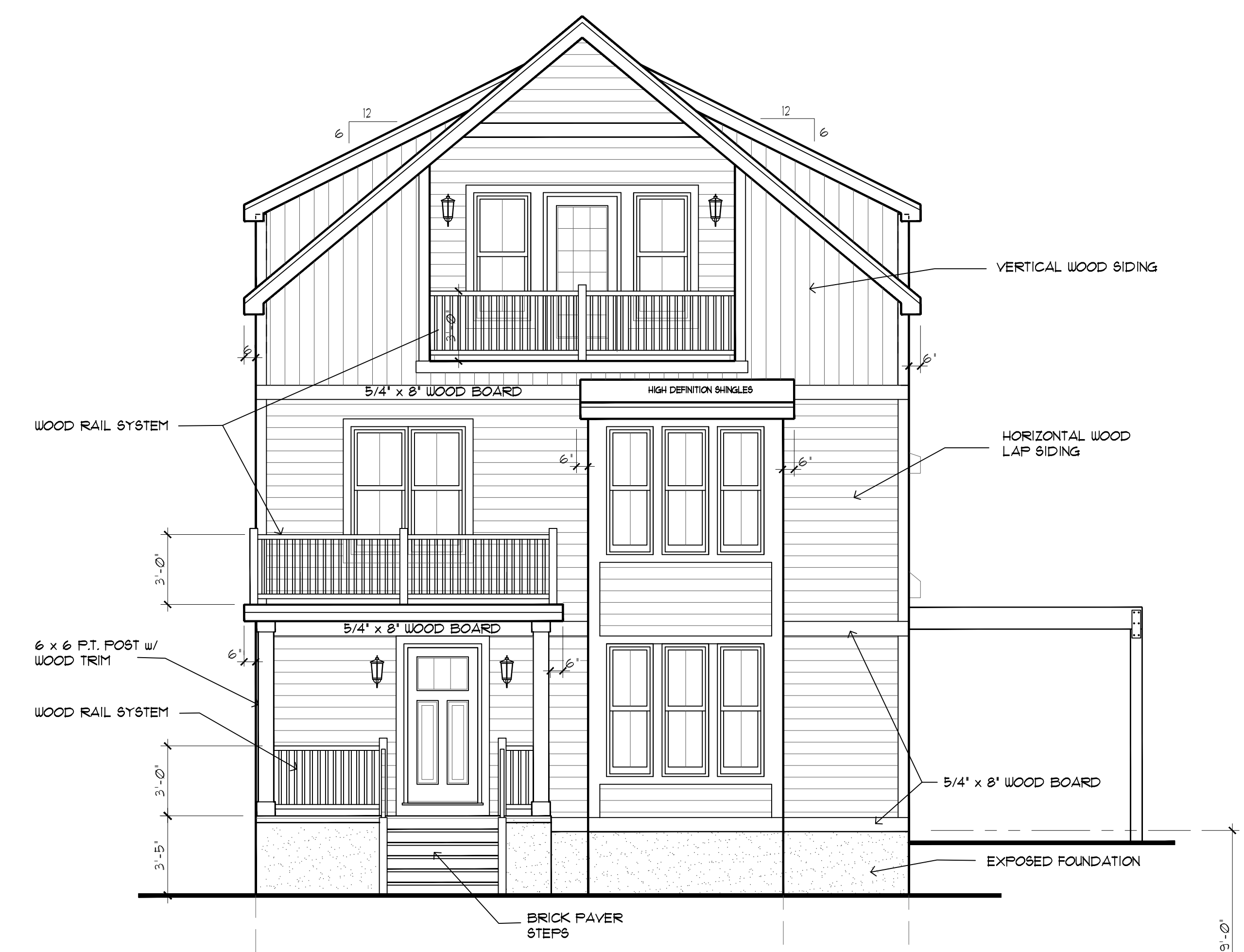
Warecki Residence
 116 W. Vine St.
 Milwaukee, WI

SCALE: AS NOTED
 DRAWN BY: DJA
 DATE: 5-19-21

1
7



NORTH ELEVATION
 SCALE: 1/4" = 1'-0"



SOUTH ELEVATION
 SCALE: 1/4" = 1'-0"



WEST ELEVATION
 SCALE: 1/4" = 1'-0"

SQUARE FOOTAGE
 1335 Sq. Ft. First Floor Living Space
 1184 Sq. Ft. Second Floor Living Space
 2519 Total Living Space
 573 Sq. Ft. Garage
 536 Sq. Ft. Bonus Space
 610 Sq. Ft. 3rd Floor Attic Space



EAST ELEVATION
SCALE: 1/4" = 1'-0"

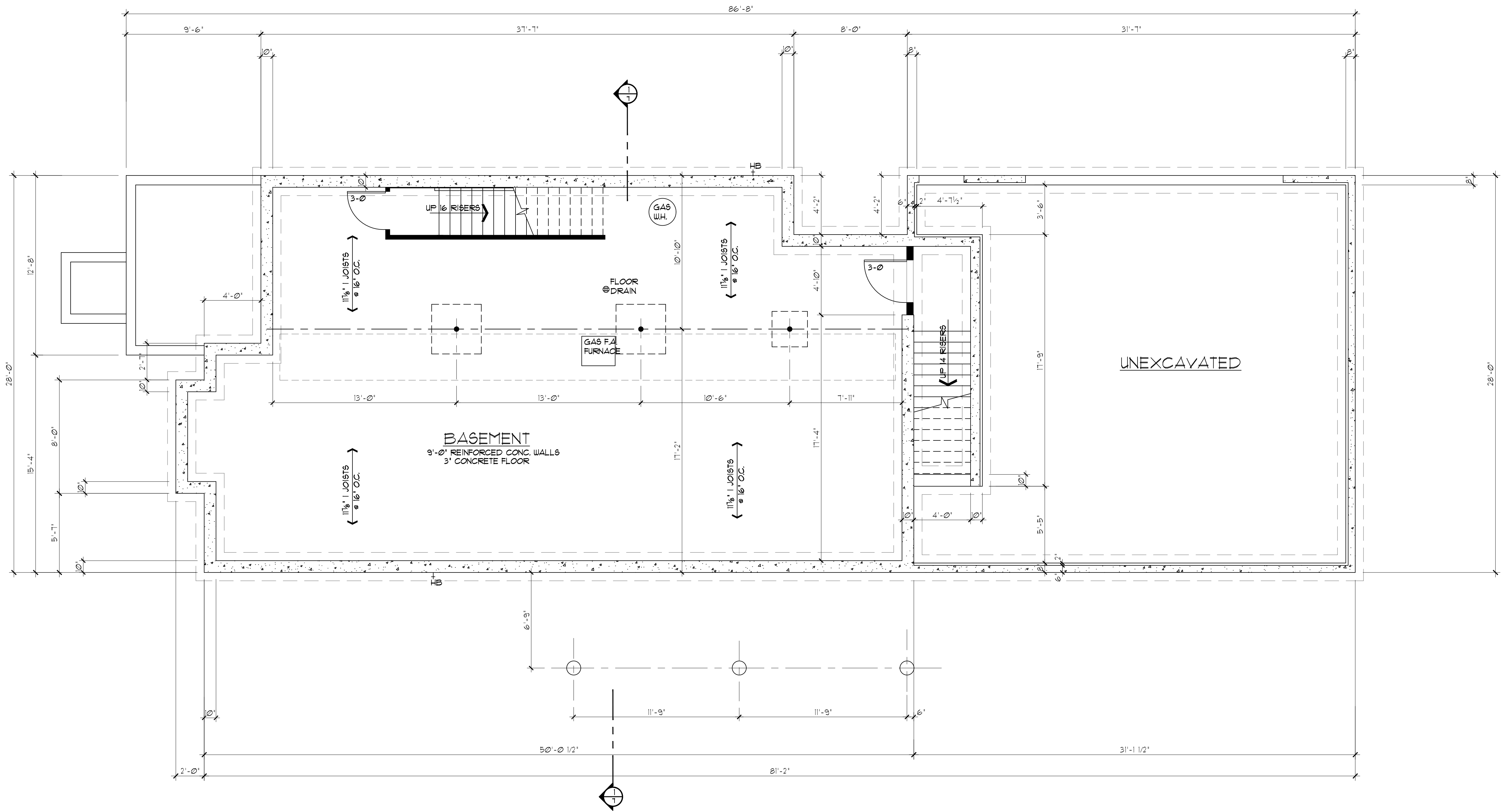


ESPIRE HOMES INC.
530 Hartbrook Dr.
Hartland, WI 53029
262-746-2000

REVISIONS
ARCH REVIEW 5-19-21

Warecki Residence
116 W. Vine St.
Milwaukee, WI

SCALE: AS NOTED
DRAWN BY: DJA
DATE: 5-19-21



BASEMENT PLAN
SCALE: 1/4" = 1'-0"



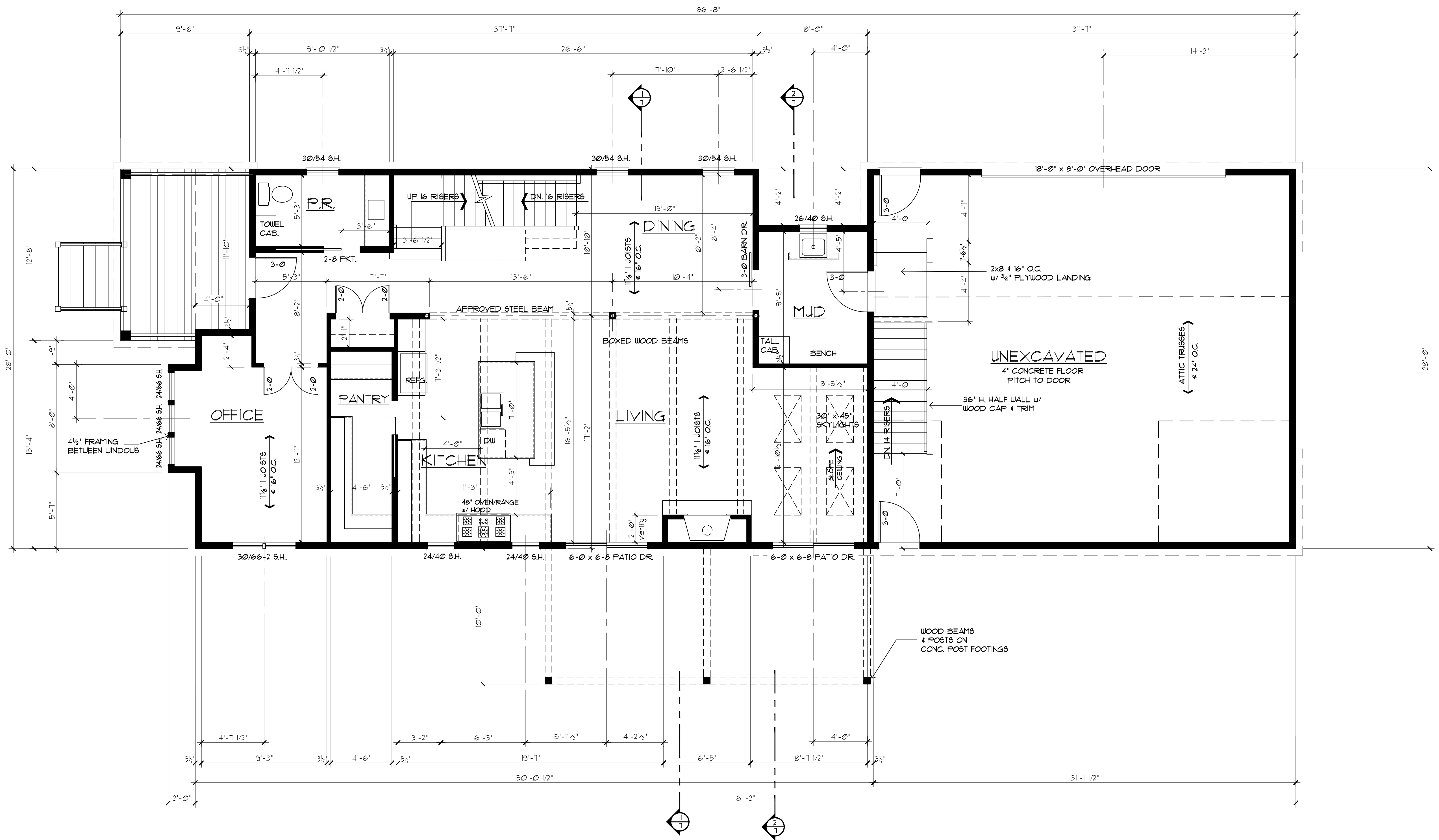
ESPIRE HOMES INC.
530 Hartbrook Dr.
Harland, WI 53029
262-746-2000

REVISIONS
ARCH REVIEW 5-19-21

Warecki Residence
116 W. Vine St.
Milwaukee, WI

| | |
|-----------|----------|
| SCALE: | AS NOTED |
| DRAWN BY: | DJA |
| DATE: | 5-19-21 |

3
7



FIRST FLOOR PLAN
SCALE: 1/4" = 1'-0"



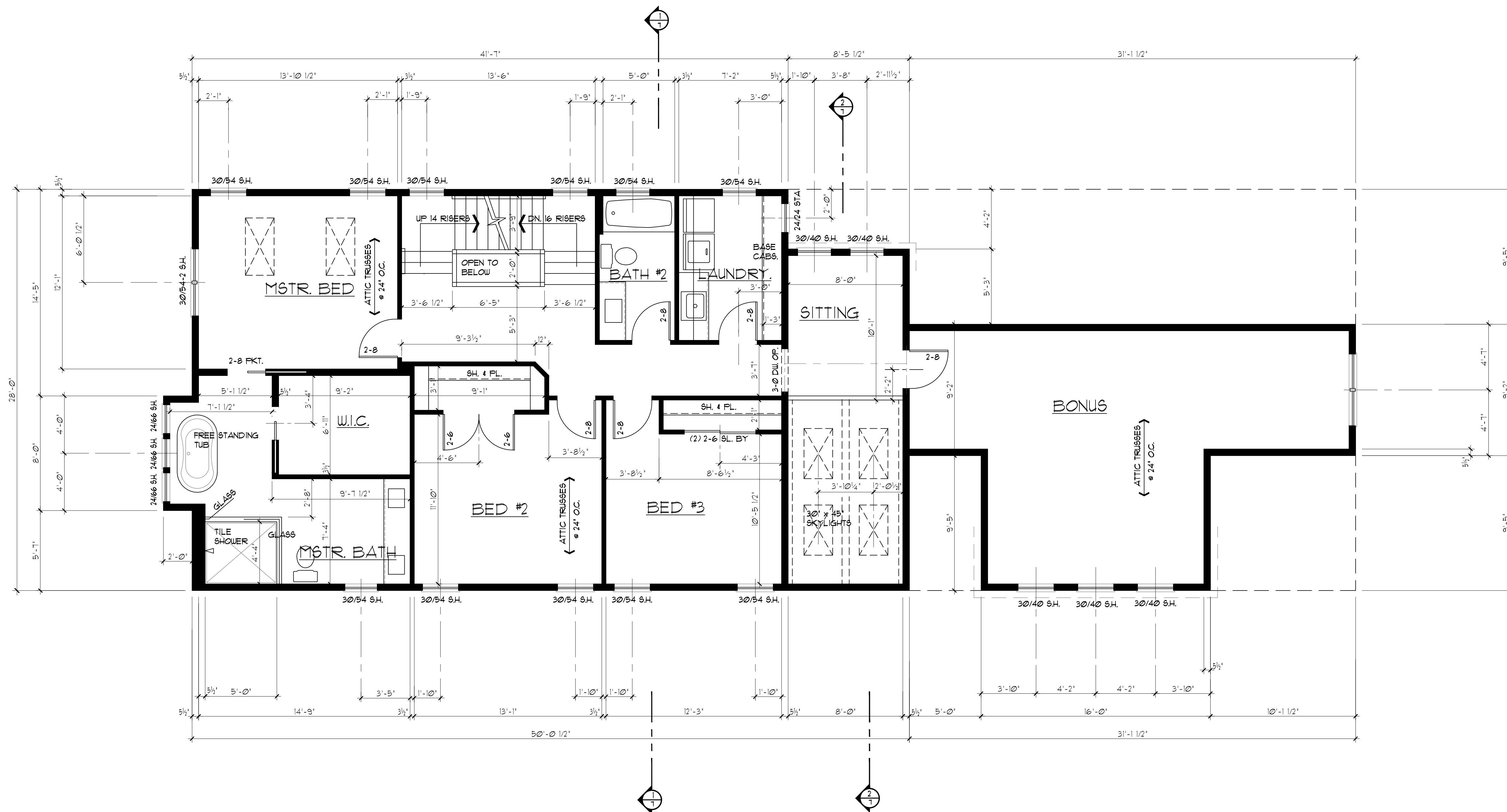
ESPIRE HOMES INC.
530 Hartbrook Dr.
Hartland, WI 53029
262-746-2000

REVISIONS
ARCH REVIEW 5-19-21

Warecki Residence
116 W. Vine St.
Milwaukee, WI

SCALE: AS NOTED
DRAWN BY: DJA
DATE: 5-19-21

4
7



SECOND FLOOR PLAN
SCALE: 1/4" = 1'-0"



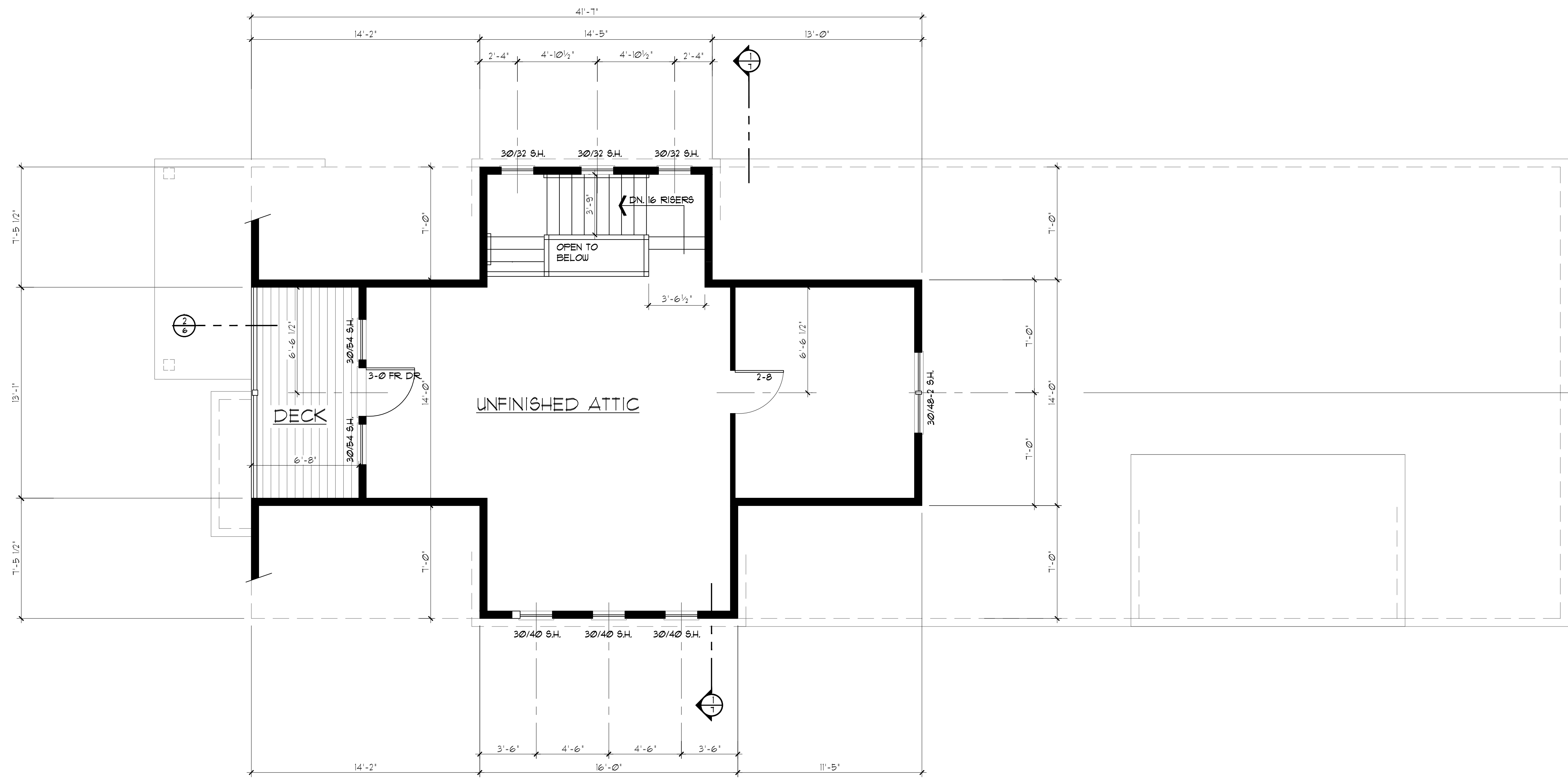
ESPIRE HOMES INC.
530 Hartbrook Dr.
Hartland, WI 53029
262-746-2000

REVISIONS
ARCH REVIEW 5-19-21

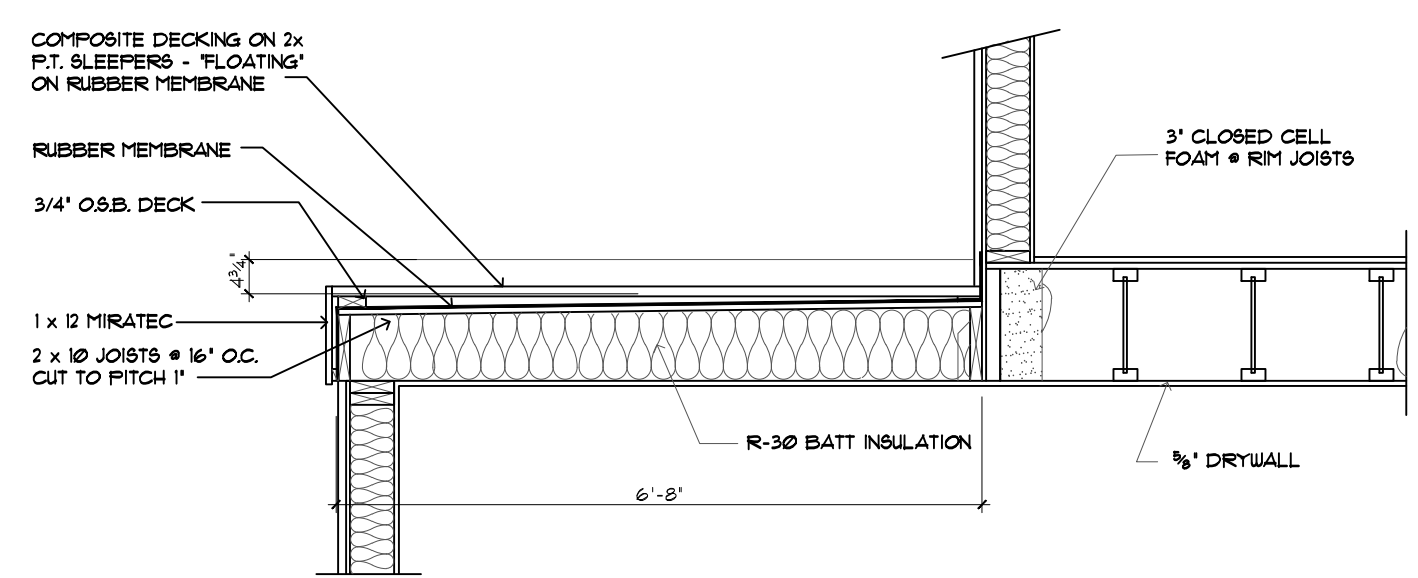
Warecki Residence
116 W. Vine St.
Milwaukee, WI

SCALE: AS NOTED
DRAWN BY: DJA
DATE: 5-19-21

5
7



UNFINISHED ATTIC PLAN
 SCALE: 1/4" = 1'-0"



DECK DETAIL 2-6
 SCALE: 1/2" = 1'-0"



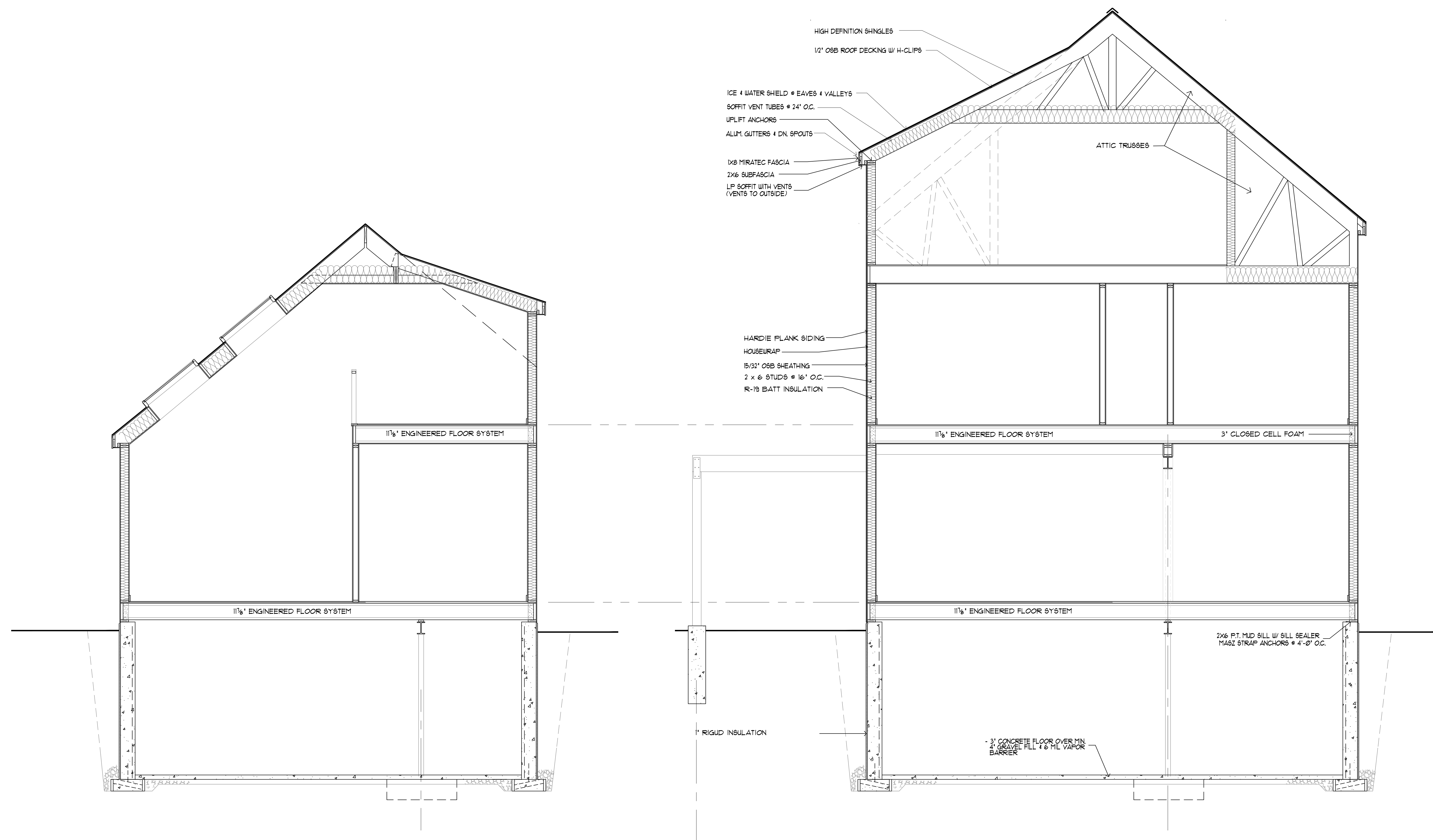
ESQUIRE HOMES INC.
 530 Hartbrook Dr.
 Hartland, WI 53029
 262-746-2000

REVISIONS
 ARCH REVIEW 5-19-21

Warecki Residence
 116 W. Vine St.
 Milwaukee, WI

SCALE: AS NOTED
 DRAWN BY: DJA
 DATE: 5-19-21

7
 7



BUILDING SECTION 2-7
 SCALE: 3/8" = 1'-0"

BUILDING SECTION 1-7
 SCALE: 3/8" = 1'-0"