

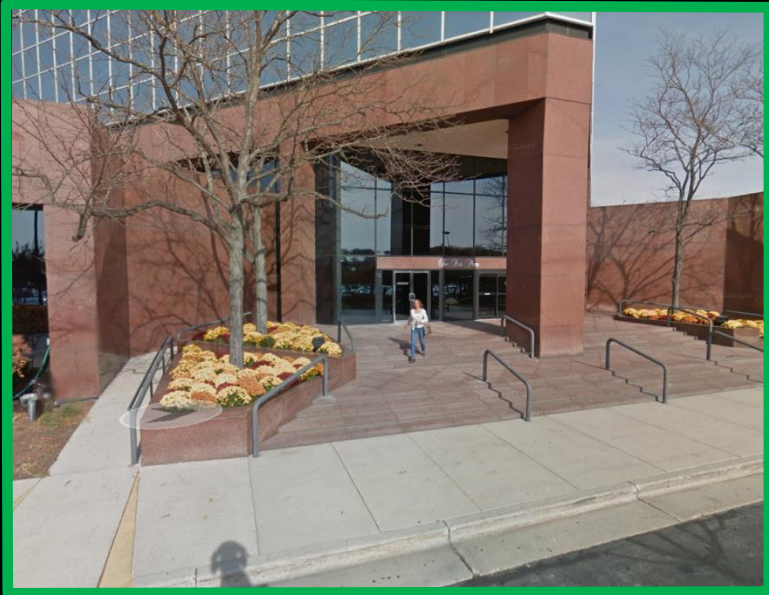
File No. 170798. Substitute resolution relating to a Minor Modification to the Detailed Planned Development known as Park Place, Stage 5, to allow for additional freestanding and building wall signage at 10850 West Park Place, located on the north side of West Park Place, west of West Liberty Drive, in the 5th Aldermanic District.



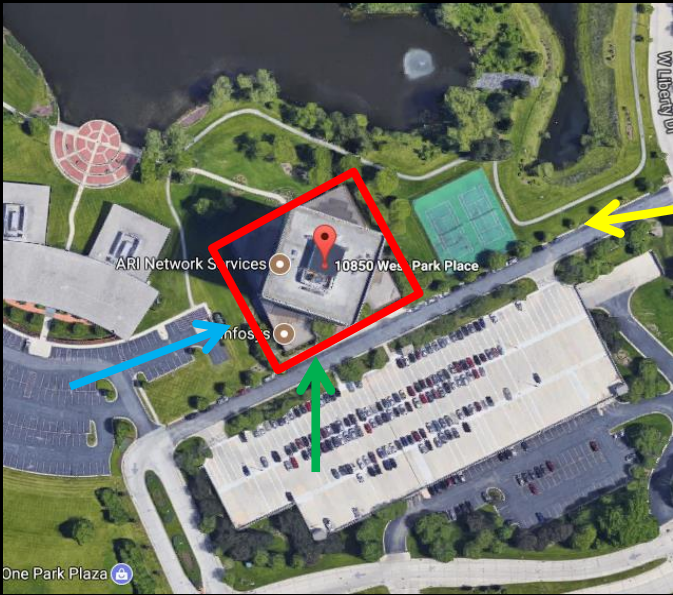
File No. 170798. Site Context Photos.



File No. 170798. Site Context Photos.



View north from West Park Place

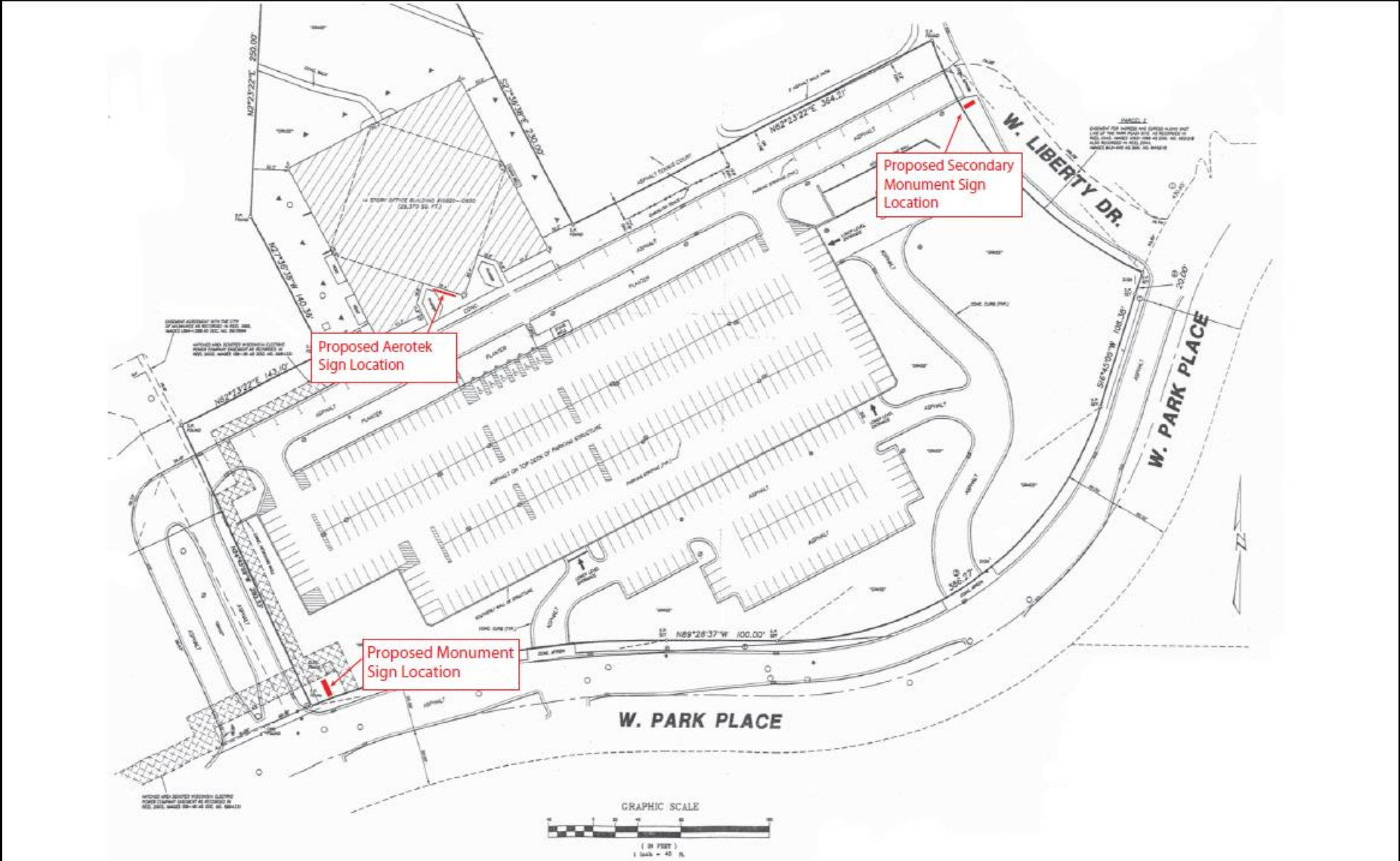


View northeast from west parking lot



View west from West Park Place and West Liberty Drive

File No. 170798. Site Plan.



File No. 170798. "Primary" Monument Sign Locations.

Two Park Plaza- Interstate Partners and Aerotek



Proposed location of "primary" illuminated monument sign. Sign to be located outside of vision triangle

File No. 170798. "Secondary" Monument Sign Locations.

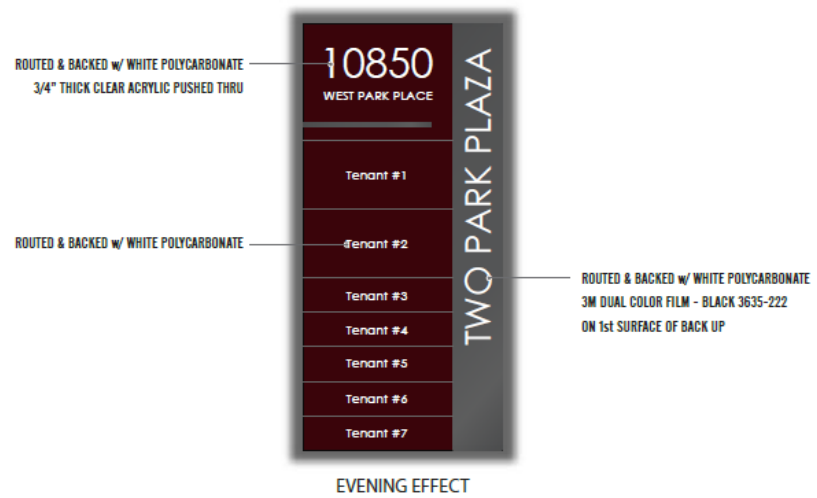
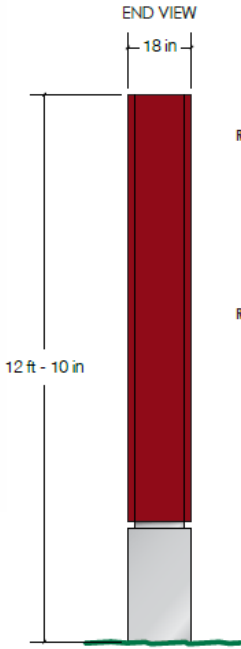
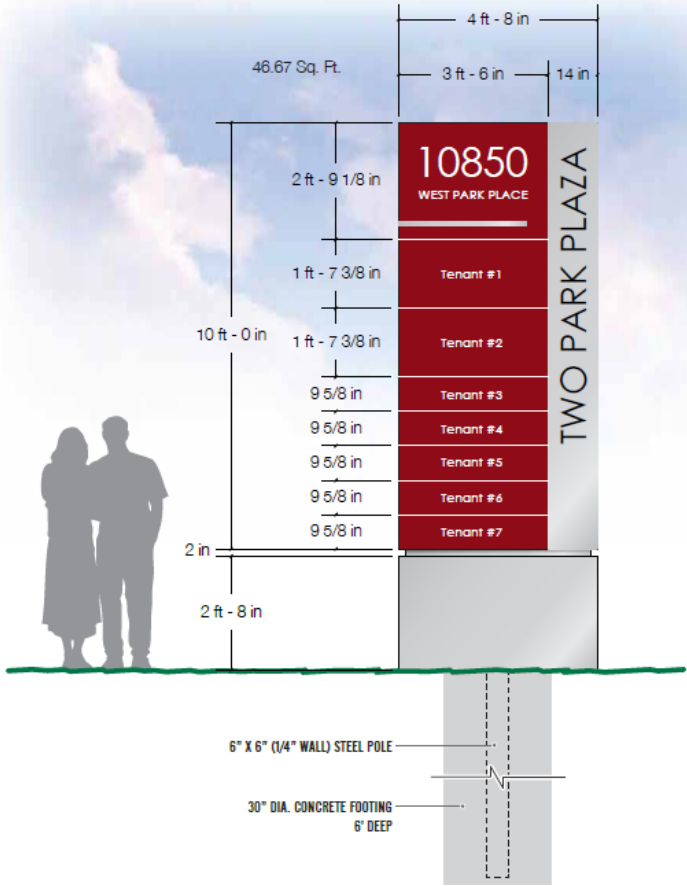
Two Park Plaza- Interstate Partners and Aerotek



Proposed location of "secondary" non-lit monument sign. Sign to be located outside of vision triangle

File No. 170798. "Primary" Monument Sign Details

INTERSTATE PARTNERS - Monument Sign "Primary"



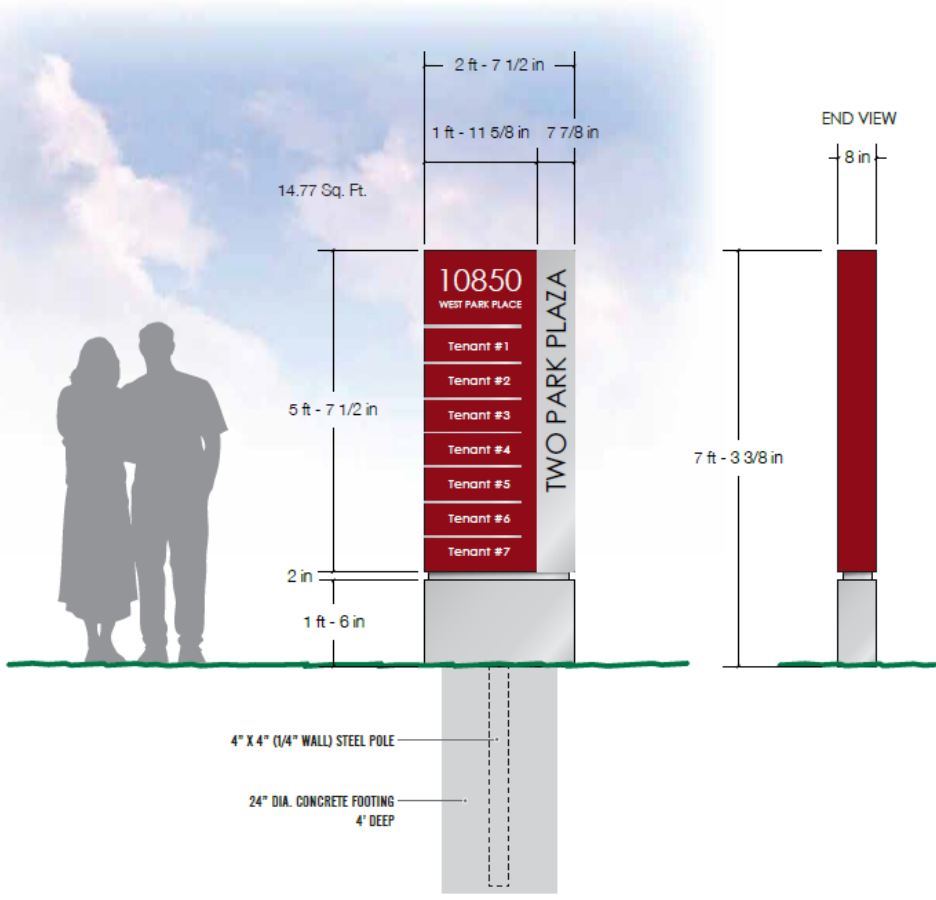
MONUMENT SIGN w/ TENANTS

ONE (1) DOUBLE SIDED MONUMENT SIGN, INTERNALLY ILLUMINATED w/ WHITE LED - UL APPROVED FABRICATION
 18" DEEP FABRICATED ALUMINUM CABINET w/ ROUTED ALUMINUM FACES - PAINTED COLONIAL RED (MP15967) & BRUSHED ALUMINUM (MP41342SP)
 ROUTED FACES BACKED w/ WHITE POLY CARBONATE, "10850 WEST PARK PLACE" HAS 3/4" THICK CLEAR ACRYLIC PUSHED THRU,
 "TWO PARK PLAZA" HAS DUAL COLOR FILM - BLACK 3635-222 ON 1st SURFACE OF BACK UP, REMOVABLE TENANT PANELS ARE ROUTED & BACKED UP
 18" DEEP FABRICATED ALUMINUM POLE COVER & REVEAL - PAINTED BRUSHED ALUMINUM (MP41342SP)
 SIGN TO SADDLE MOUNT 6" X 6" (1/4" WALL) STEEL POLE
 STEEL POLE TO BE SET 6" BELOW GRADE IN TYPICAL CONCRETE FOOTING

NOTE: FINAL ELECTRICAL CONNECTION IS THE RESPONSIBILITY OF THE OWNER. LEMBERG WILL ONLY PROVIDE CONNECTION IF APPROPRIATE ELECTRICAL SOURCE IS WITHIN 3' OF THE SIGN.

File No. 170798. "Secondary" Monument Sign Details

INTERSTATE PARTNERS - Monument Sign "Secondary" (Non-Lit)



MONUMENT SIGN w/ TENANTS

- ONE (1) DOUBLE SIDED MONUMENT SIGN, NON-LIT
- 8" DEEP FABRICATED ALUMINUM SIGN BODY - PAINTED COLONIAL RED (MP15967) & BRUSHED ALUMINUM (MP41342SP)
- GRAPHICS - 3M OPAQUE VINYL, WHITE 7725-10, BLACK 7725-12 & SILVER 7725-58
- 8" DEEP FABRICATED ALUMINUM POLE COVER & REVEAL - PAINTED BRUSHED ALUMINUM (MP41342SP)
- SIGN TO SADDLE MOUNT 4" X 4" (1/4" WALL) STEEL POLE
- STEEL POLE TO BE SET 4' BELOW GRADE IN TYPICAL CONCRETE FOOTING

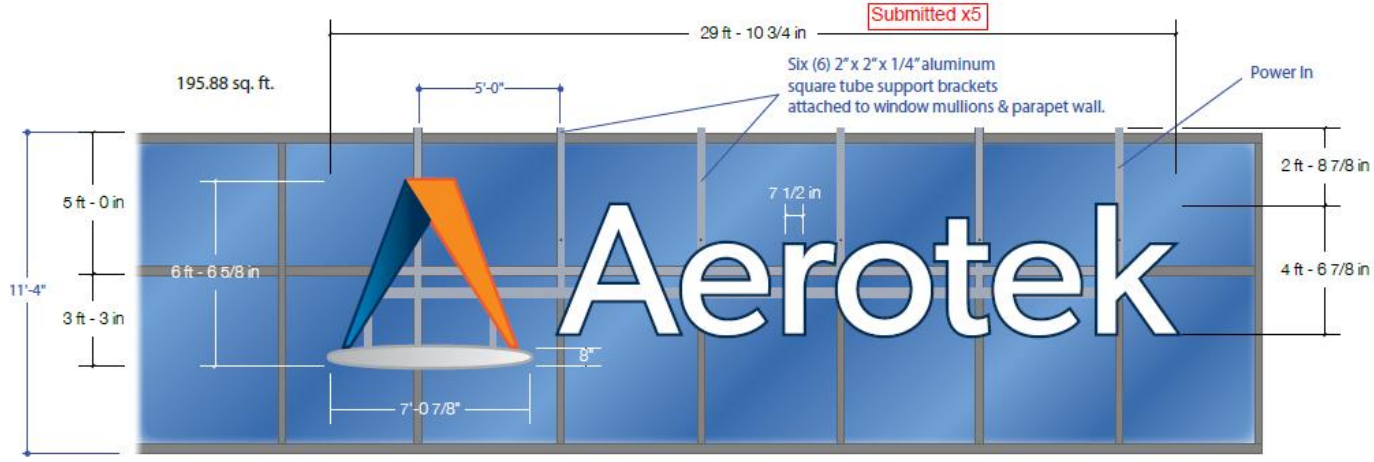
File No. 170798. Illuminated Wall Sign Proposed Location.

Two Park Plaza- Interstate Partners and Aerotek



Proposed location of "Aerotek" illuminated wall sign. Sign to be mounted on the southwest elevation.

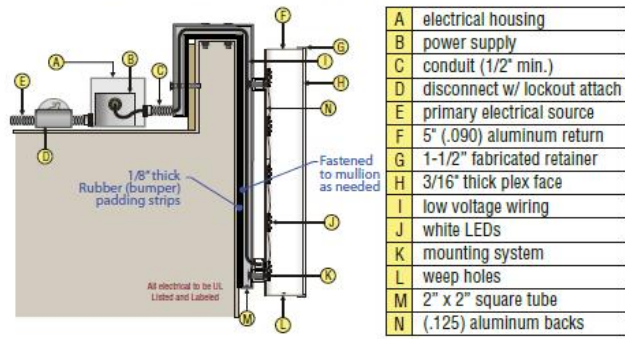
AEROTEK - Channel Letters & Logo



Fabricate new brackets & wireways



Bracket Mounted Letter - Cross Section Detail



A	electrical housing
B	power supply
C	conduit (1/2" min.)
D	disconnect w/ lockout attach
E	primary electrical source
F	5" (.090) aluminum return
G	1-1/2" fabricated retainer
H	3/16" thick plex face
I	low voltage wiring
J	white LEDs
K	mounting system
L	weep holes
M	2" x 2" square tube
N	(.125) aluminum backs

CHANNEL LETTERS & LOGO

- ONE (1) SET OF FACE-LIT CHANNEL LETTERS
- 5" DEEP (.090) ALUMINUM RETURNS - BLUE
- LETTER BACKS ARE .125 ALUMINUM
- FABRICATED ALUMINUM 1-1/2" RETAINERS - BLUE / ORANGE & GRAY (T.B.D.)
- LOGO & LETTERS HAVE WHITE POLYCARBONATE FACES
- LOGO DIGITALLY PRINTED, 3M TRANSLUCENT FILM GRAPHICS APPLIED 1ST SURFACE
- INTERNAL WHITE LED ILLUMINATION - UL APPROVED FABRICATION
- LETTERS ARE MOUNTED TO 2" SQ. FABRICATED ALUMINUM WIREWAY CHANNELS, PAINTED TO MATCH BUILDING MULLIONS (T.B.D.)
- NEW WIREWAY CHANNELS TO BE MOUNTED TO WINDOW MULLIONS
- REMOTE POWER SUPPLIES LOCATED ON ROOF



NOTE: FINAL ELECTRICAL CONNECTION IS THE RESPONSIBILITY OF THE OWNER. LEMBERG WILL ONLY PROVIDE CONNECTION IF APPROPRIATE ELECTRICAL SOURCE IS WITHIN 3' OF THE SIGN.