

KUHS QUALITY HOMES

PRESENTS: PACKAGE PRICE = \$310,000.00

THE RIVERDALE - 2440 SQ. FT.

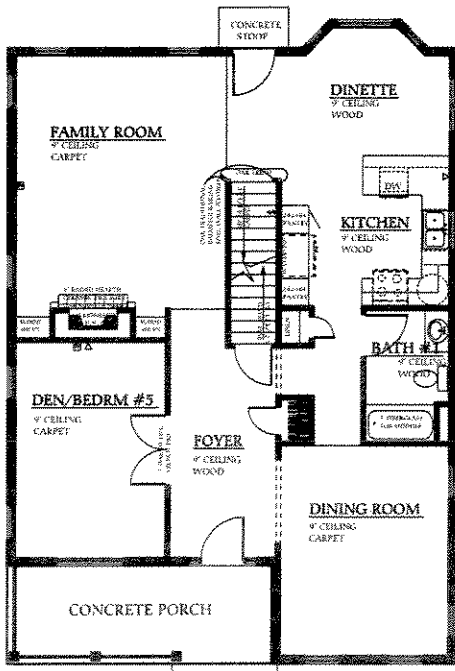
5 BEDROOMS/3 BATHS/2 CAR DET. GARAGE

WALNUT CIRCLE

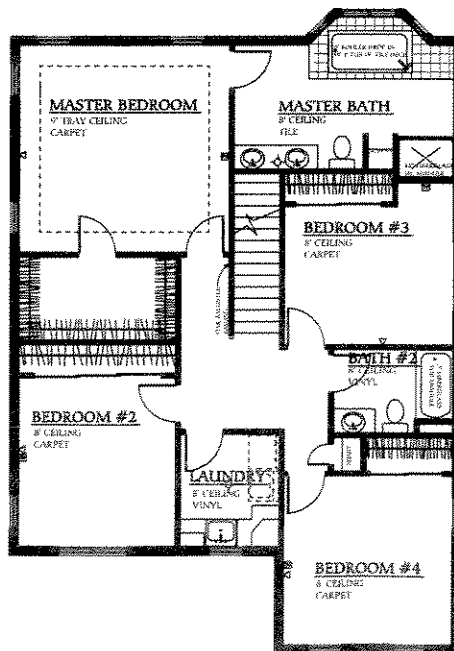
FEATURES INCLUDED:



- Lot
- Survey, Recert, Foundation Survey
- Permits
- Sewer and Water Laterals
- Excavation/Rough Grading/Trucking
- 8' Poured Concrete Foundation Walls
- Foundation Water-Proofing
- 2x6 Exterior Walls W/R-19 Insulation
- 9'-0" 1st Floor Walls
- O.S.B. Wall Sheathing
- Tyvek Housewrap
- Engineered TJI Floor Joists
- Aluminum Clad, Low-E Windows
- Hardiplank Siding
- Cedar Fascia and Soffits
- Aluminum Gutters
- 30 Yr. Raised Profile Roof Shingles
- Insulated Steel Entry Door with Sidelites and Transom
- Interior/Exterior Painting
- Prefinished Oak Colonial Woodwork
- Prefinished 6-Panel Pine Interior Doors
- 3'-0" Wide Doors on 1st Floor
- Satin Nickel Lever Door Hardware
- Oak, Raised Panel Cabinetry
- Wood Flooring, per plan
- Carpet & Vinyl Flooring, per plan
- Light Fixtures Allowance - \$1,500.00
- Kohler Plumbing Fixtures
- Kohler Whirlpool Tub
- Ceramic Tile in Master Bathroom
- Gas Direct Vent Water Heater
- High Efficiency Carrier Furnace
- Carrier 13 SEER Central Air
- Gas Direct Vent Fireplace
- Whirlpool Appliance Package
- 200 Amp Electric Service
- Smoke Detectors, Per Code
- (12) Cable or Phone Outlets
- House & Garage Security System
- Detached 22x22 Garage
- Concrete Sidewalks
- Landscaping (Sod, (2)Trees, Bushes)
- Dumpster/Port-a-let Onsite
- Plan Changes Available
- 1 Year Warranty



1ST FLOOR 32'-0" WIDE 1220 SQ. FT.



2ND FLOOR 1220 SQ. FT.

OPTIONS THAT CAN BE ADDED

- * Corian Countertops in Kitchen-\$4,000.00
- * Granite Countertops in Kitchen-\$6,500.00
- * Stainless Steel Appliance Pkg. - \$2,200.00
- * Finished Basement - \$Varies
- * Attached Garage - Call for pricing

Prices and plans subject to change any time
Plans and promotional material copyrighted by Kuhs Quality Homes, Inc.

Other Options Available Upon Request

KUHS QUALITY HOMES

PRESENTS:

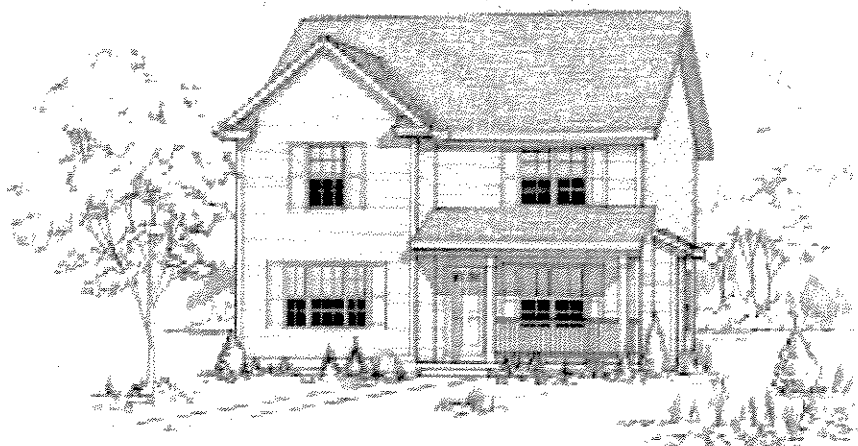
PACKAGE PRICE = \$272,000.00

THE HAMPTON - 2250 SQ. FT.

5 BEDROOMS/3 BATHS/2 CAR DET. GARAGE

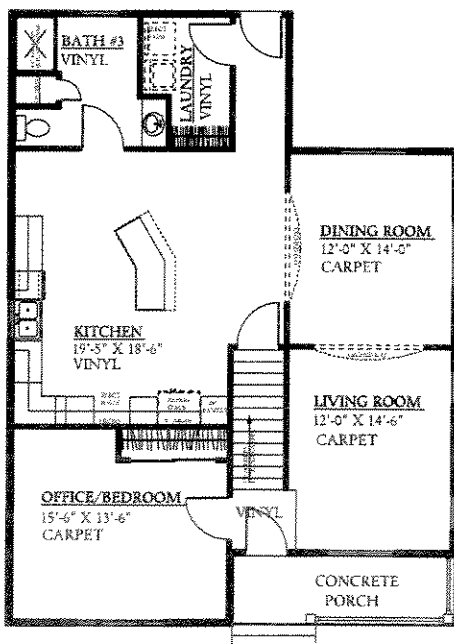
FEATURES INCLUDED:

WALNUT CIRCLE

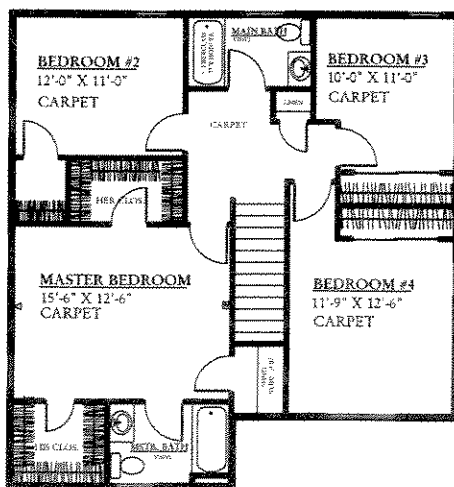


Contact Cindy Kuhs for more information regarding this plan or any other plan you might be interested in building (414) 333-7212 or cindykuhs@kuhshomes.com Visit us at www.kuhshomes.com

- Lot
- Survey, Recert, Foundation Survey
- Permits
- Sewer and Water Laterals
- Excavation/Rough Grading/Trucking
- 8' Poured Concrete Foundation Walls
- Foundation Water-Proofing
- 2x6 Exterior Walls W/R-19 Insulation
- O.S.B. Wall Sheathing
- Tyvek Housewrap
- Engineered TJI Floor Joists
- 9'-0" 1st Floor Ceilings
- Aluminum Clad, Low-E Windows
- Hardiplank Siding
- Cedar Facsia and Soffits
- Aluminum Gutters
- 30 Yr. Raised Profile Roof Shingles
- Insulated Steel Entry Door
- Interior/Exterior Painting
- Prefinished Oak Colonial Woodwork
- Prefinished 6-Panel Pine Doors
- 3'-0" Wide Doors on 1st Floor
- Satin Nickel Lever Door Hardware
- Oak Raised Panel Cabinetry
- Carpet & Vinyl Flooring
- Light Fixtures Allowance - \$1,000.00
- Kohler Plumbing Fixtures
- Gas Direct Vent Water Heater
- High Efficiency Carrier Furnace
- Carrier 13 SEER Central Air
- Dishwasher and Microwave
- 200 Amp Electric Service
- Smoke Detectors, Per Code
- (10) Cable or Phone Outlets
- House & Garage Security System
- Detached 22x22 Garage
- Landscaping (2 Trees, Bushes, Sod)
- Concrete Sidewalks
- Dumpster/Port-a-let Onsite
- Plan Changes Available
- 1 Year Warranty



1ST FLOOR 32'-0" WIDE 1326 SQ. FT.



2ND FLOOR 924 SQ. FT.

OPTIONS THAT CAN BE ADDED

- * Kohler Whirlpool Tub - \$3,600.00
- * Gas Direct Vent Fireplace - \$2,700.00
- * Wood Flooring - \$Varies
- * Corian Countertops in Kitchen - \$4,500.00
- * Granite Countertops in Kitchen - \$8,000.00
- * Appliance Package - \$3,200.00
- * Finished Basement - \$Varies
- * Stainless Steel Appliance Pkg. - \$5,400.00
- * Attached Garage - Call for pricing

Pricing and plans subject to change at any time
Plans and promotional material copyrighted by Kuhs Quality Homes, Inc.

Other Options Available Upon Request

KUHS QUALITY HOMES

PRESENTS: PACKAGE PRICE = \$285,000.00

THE COTTNER - 2306 SQ. FT.

4 BEDROOMS/2.5 BATHS/2 CAR DET. GARAGE

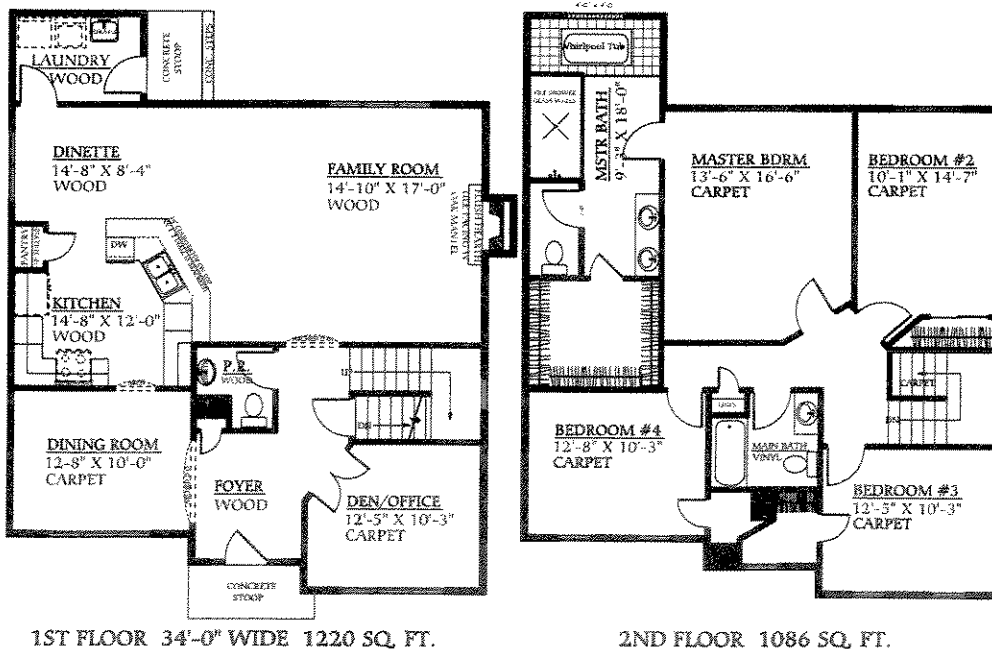
WALNUT CIRCLE

FEATURES INCLUDED:



- Lot
- Survey, Recert, Foundation Survey
- Permits
- Sewer and Water Laterals
- Excavation/Rough Grading/Trucking
- 8' Poured Concrete Foundation Walls
- Foundation Water-Proofing
- 2x6 Exterior Walls W/R-19 Insulation
- 9'-0" 1st Floor Walls
- O.S.B. Wall Sheathing
- Tyvek Housewrap
- Engineered TJI Floor Joists
- Aluminum Clad, Low-E Windows
- Hardiplank Siding
- Cedar Fascia and Soffits
- Aluminum Gutters
- 30 Yr. Raised Profile Roof Shingles
- Insulated Steel Entry Door with Sidelights and Transom
- Interior/Exterior Painting
- Prefinished Oak Colonial Woodwork
- Prefinished 6-Panel Pine Doors
- 3'-0" Wide Doors on 1st Floor
- Satin Nickel Lever Door Hardware
- Oak Raised Panel Cabinetry
- Wood Flooring, per plan
- Carpet & Vinyl Flooring, per plan
- Light Fixtures Allowance - \$1,200.00
- Kohler Plumbing Fixtures
- Kohler Whirlpool Tub
- Ceramic Tile in Master Bathroom
- Gas Direct Vent Water Heater
- High Efficiency Carrier Furnace
- Carrier 13 SEER Central Air
- Gas Direct Vent Fireplace
- 200 Amp Electric Service
- Smoke Detectors, Per Code
- (10) Cable or Phone Outlets
- Whirlpool Appliance Package
- House & Garage Security System
- Detached 22x22 Garage
- Landscaping (2 Trees, Bushes, Sod)
- Concrete Sidewalks
- Dumpster/Port-a-let Onsite
- Plan Changes Available
- 1 Year Warranty

Contact Cindy Kuhs for more information regarding this plan or any other plan you might be interested in building (414) 333-7212 or cindykuhs@kuhshomes.com Visit us at www.kuhshomes.com



OPTIONS THAT CAN BE ADDED

- * Corian Countertops in Kitchen-\$4,000.00
- * Granite Countertops in Kitchen-\$6,500.00
- * Stainless Steel Appliance Pkg. - \$2,200.00
- * Finished Basement - \$Varies
- * Attached Garage - Call for pricing

Prices and plans subject to change any time
Plans and promotional material copywrited by Kuhs Quality Homes, Inc.

Other Options Available Upon Request

KUHS QUALITY HOMES

PRESENTS: PACKAGE PRICE = \$270,000.00
THE ROTHCHILD - 2000 SQ. FT.

3 BEDROOMS/2.5 BATHS/2 CAR DET. GARAGE

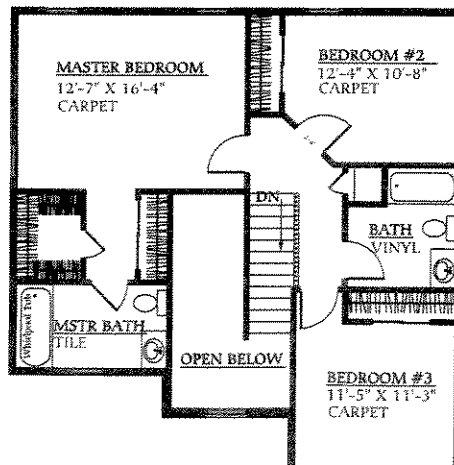
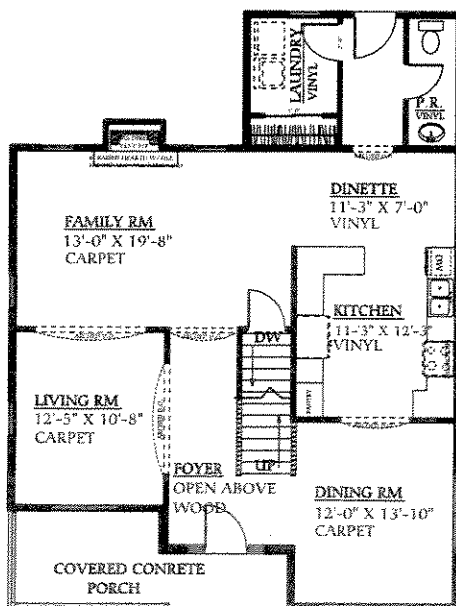
WALNUT CIRCLE



FEATURES INCLUDED:

- Lot
- Survey, Recert, Foundation Survey
- Permits
- Sewer and Water Laterals
- Excavation/Rough Grading/Trucking
- 8' Poured Concrete Foundation Walls
- Foundation Water-Proofing
- 2x6 Exterior Walls W/R-19 Insulation
- 9'-0" 1st Floor Walls
- O.S.B. Wall Sheathing
- Tyvek Housewrap
- Engineered TJI Floor Joists
- Aluminum Clad, Low-E Windows
- Hardiplank Siding
- Cedar Facsia and Soffits
- Aluminum Gutters
- 30 Yr. Raised Profile Roof Shingles
- Insulated Steel Entry Door with Sidelites
- Interior/Exterior Painting
- Prefinished Oak Colonial Woodwork
- Prefinished 6-Panel Pine Doors
- Satin Nickel Lever Door Hardware
- Oak Raised Panel Cabinetry
- Wood Flooring in Foyer
- Carpet & Vinyl Flooring, per plan
- Light Fixtures Allowance - \$1,000.00
- Kohler Plumbing Fixtures
- Kohler Whirlpool Tub
- Ceramic Tile in Master Bathroom
- Gas Direct Vent Water Heater
- High Efficiency Carrier Furnace
- Carrier 13 SEER Central Air
- Gas Direct Vent Fireplace
- Whirlpool Appliance Package
- 200 Amp Electric Service
- Smoke Detectors, Per Code
- (8) Cable or Phone Outlets
- House & Garage Security System
- Detached 22x22 Garage
- Landscaping (2 Trees, Bushes, Sod)
- Concrete Sidewalks
- Dumpster/Port-a-let Onsite
- Plan Changes Available
- 1 Year Warranty

Contact Cindy Kuhs for more information regarding this plan or any other plan you might be interested in building (414) 333-7212 or cindykuhs@kuhshomes.com Visit us at www.kuhshomes.com



OPTIONS THAT CAN BE ADDED

- * Corian Countertops in Kitchen - \$3,500.00
- * Granite Countertops in Kitchen - \$6,500.00
- * Stainless Steel Appliance Pkg. - \$2,200.00
- * Finished Basement - \$Varies
- * Attached Garage - Call for pricing

Pricing and plans subject to change at any time
 Plans and promotional material copyrighted by Kuhs Quality Homes, Inc.

Other Options Available Upon Request