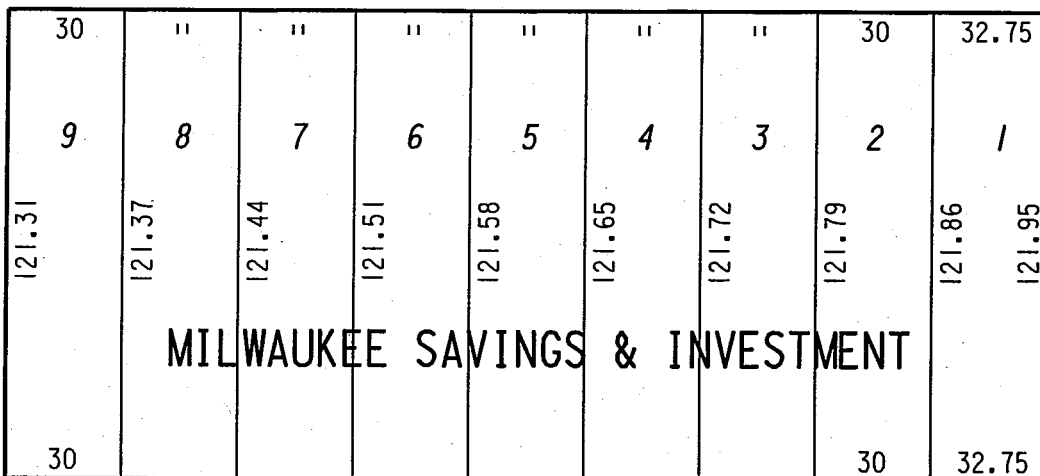


S.W. 1/4 SEC. 8, T.7N., R.22E.

283

W. Keefe Ave. (60' R.O.W.)

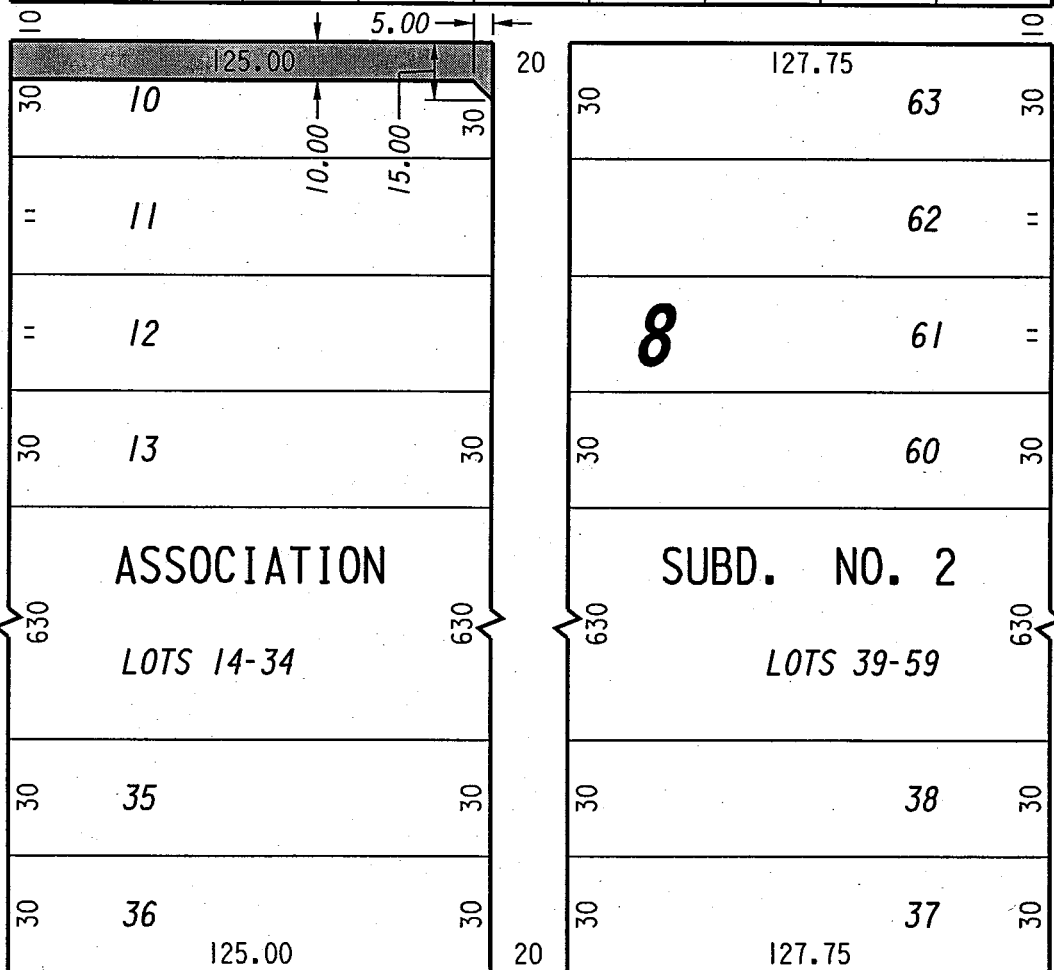


St.

(60' R.O.W.)

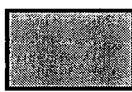
(60' R.O.W.)

N. 10th



N. 9th

W. Concordia Ave. (60' R.O.W.)

 CITY PROPERTY TO BE DEDICATED FOR PUBLIC ALLEY PURPOSES

FILE NO. 020898

INFRASTRUCTURE SERVICES DIVISION

MILWAUKEE, WISCONSIN

ASSIGNED TO: W.E. FUCHS

CH'K'D. BY: M.C. WILLIAMS

DRAWN BY: W.E.F.

DATE: AUG. 26, 2002

PROJECT/GRANT NO.: WK52360040

SCALE: 1" = 50'

APPROVED BY:

Marcia Lindholm
CENTRAL DRAFTING & RECORDS MANAGER

John Plunkett
CITY ENGINEER