

# MILWAUKEE COUNTY CERTIFIED SURVEY MAP NO.

BEING A REDIVISION OF A COMBINATION OF PARCEL 1 OF CERTIFIED SURVEY MAP NO. 4130 RECORDED ON NOVEMBER 25, 1981 IN THE MILWAUKEE COUNTY REGISTER OF DEEDS OFFICE AS DOCUMENT NUMBER 5513456, AND UNPLATTED LANDS, ALL BEING THAT PART OF THE SOUTHWEST 1/4 AND THE SOUTHEAST 1/4 OF THE NORTHEAST 1/4 AND THE NORTHEAST 1/4 OF THE SOUTHWEST 1/4 OF SECTION 4, TOWNSHIP 8 NORTH, RANGE 21 EAST, CITY OF MILWAUKEE, COUNTY OF MILWAUKEE, STATE OF WISCONSIN.

CITY OF MILWAUKEE TAX KEY NUMBER

006-0021-110

CONC. MON. W/ BRASS CAP N.E. COR OF THE N.E. 1/4 SEC. 4-B-21

N 441,011.96

E 2,532,231.72

NORTH 76TH STREET  
EAST LINE OF THE NE 1/4

500'20.42"E

DO 527.66'

FD 1" IP

589.39'18"W

113.35'

589.39'18"W

106.19'

583.42'34"W

UNPLATTED LANDS (N89.35.30E)

UNPLATTED LANDS (N89.35.30E)

UNPLATTED LANDS (N89.35.30E)

UNPLATTED LANDS (N89.35.30E)

UNPLATTED LANDS (N89.35.30E)

UNPLATTED LANDS (N89.35.30E)

UNPLATTED LANDS (N89.35.30E)

UNPLATTED LANDS (N89.35.30E)

UNPLATTED LANDS (N89.35.30E)

UNPLATTED LANDS (N89.35.30E)

UNPLATTED LANDS (N89.35.30E)

UNPLATTED LANDS (N89.35.30E)

UNPLATTED LANDS (N89.35.30E)

UNPLATTED LANDS (N89.35.30E)

UNPLATTED LANDS (N89.35.30E)

UNPLATTED LANDS (N89.35.30E)

UNPLATTED LANDS (N89.35.30E)

UNPLATTED LANDS (N89.35.30E)

UNPLATTED LANDS (N89.35.30E)

UNPLATTED LANDS (N89.35.30E)

UNPLATTED LANDS (N89.35.30E)

UNPLATTED LANDS (N89.35.30E)

UNPLATTED LANDS (N89.35.30E)

UNPLATTED LANDS (N89.35.30E)

UNPLATTED LANDS (N89.35.30E)

UNPLATTED LANDS (N89.35.30E)

UNPLATTED LANDS (N89.35.30E)

UNPLATTED LANDS (N89.35.30E)

UNPLATTED LANDS (N89.35.30E)

UNPLATTED LANDS (N89.35.30E)

UNPLATTED LANDS (N89.35.30E)

UNPLATTED LANDS (N89.35.30E)

UNPLATTED LANDS (N89.35.30E)

UNPLATTED LANDS (N89.35.30E)

UNPLATTED LANDS (N89.35.30E)

UNPLATTED LANDS (N89.35.30E)

UNPLATTED LANDS (N89.35.30E)

UNPLATTED LANDS (N89.35.30E)

UNPLATTED LANDS (N89.35.30E)

UNPLATTED LANDS (N89.35.30E)

UNPLATTED LANDS (N89.35.30E)

UNPLATTED LANDS (N89.35.30E)

UNPLATTED LANDS (N89.35.30E)

UNPLATTED LANDS (N89.35.30E)

UNPLATTED LANDS (N89.35.30E)

UNPLATTED LANDS (N89.35.30E)

UNPLATTED LANDS (N89.35.30E)

UNPLATTED LANDS (N89.35.30E)

UNPLATTED LANDS (N89.35.30E)

UNPLATTED LANDS (N89.35.30E)

UNPLATTED LANDS (N89.35.30E)

UNPLATTED LANDS (N89.35.30E)

UNPLATTED LANDS (N89.35.30E)

UNPLATTED LANDS (N89.35.30E)

UNPLATTED LANDS (N89.35.30E)

UNPLATTED LANDS (N89.35.30E)

UNPLATTED LANDS (N89.35.30E)

UNPLATTED LANDS (N89.35.30E)

UNPLATTED LANDS (N89.35.30E)

UNPLATTED LANDS (N89.35.30E)

UNPLATTED LANDS (N89.35.30E)

UNPLATTED LANDS (N89.35.30E)

UNPLATTED LANDS (N89.35.30E)

UNPLATTED LANDS (N89.35.30E)

UNPLATTED LANDS (N89.35.30E)

UNPLATTED LANDS (N89.35.30E)

UNPLATTED LANDS (N89.35.30E)

UNPLATTED LANDS (N89.35.30E)

UNPLATTED LANDS (N89.35.30E)

UNPLATTED LANDS (N89.35.30E)

UNPLATTED LANDS (N89.35.30E)

UNPLATTED LANDS (N89.35.30E)

UNPLATTED LANDS (N89.35.30E)

UNPLATTED LANDS (N89.35.30E)

UNPLATTED LANDS (N89.35.30E)

UNPLATTED LANDS (N89.35.30E)

UNPLATTED LANDS (N89.35.30E)

UNPLATTED LANDS (N89.35.30E)

UNPLATTED LANDS (N89.35.30E)

UNPLATTED LANDS (N89.35.30E)

CONC. MON. W/ BRASS CAP S.E. COR OF THE N.E. 1/4 SEC. 4-B-21 N 438,317.95 E 2,532,267.95

CONC. MON. W/ BRASS CAP S.E. COR OF THE N.E. 1/4 SEC. 4-B-21 N 438,317.95 E 2,532,267.95

CONC. MON. W/ BRASS CAP S.E. COR OF THE N.E. 1/4 SEC. 4-B-21 N 438,317.95 E 2,532,267.95

CONC. MON. W/ BRASS CAP S.E. COR OF THE N.E. 1/4 SEC. 4-B-21 N 438,317.95 E 2,532,267.95

CONC. MON. W/ BRASS CAP S.E. COR OF THE N.E. 1/4 SEC. 4-B-21 N 438,317.95 E 2,532,267.95

CONC. MON. W/ BRASS CAP S.E. COR OF THE N.E. 1/4 SEC. 4-B-21 N 438,317.95 E 2,532,267.95

CONC. MON. W/ BRASS CAP S.E. COR OF THE N.E. 1/4 SEC. 4-B-21 N 438,317.95 E 2,532,267.95

CONC. MON. W/ BRASS CAP S.E. COR OF THE N.E. 1/4 SEC. 4-B-21 N 438,317.95 E 2,532,267.95

CONC. MON. W/ BRASS CAP S.E. COR OF THE N.E. 1/4 SEC. 4-B-21 N 438,317.95 E 2,532,267.95

CONC. MON. W/ BRASS CAP S.E. COR OF THE N.E. 1/4 SEC. 4-B-21 N 438,317.95 E 2,532,267.95

CONC. MON. W/ BRASS CAP S.E. COR OF THE N.E. 1/4 SEC. 4-B-21 N 438,317.95 E 2,532,267.95

CONC. MON. W/ BRASS CAP S.E. COR OF THE N.E. 1/4 SEC. 4-B-21 N 438,317.95 E 2,532,267.95

CONC. MON. W/ BRASS CAP S.E. COR OF THE N.E. 1/4 SEC. 4-B-21 N 438,317.95 E 2,532,267.95

CONC. MON. W/ BRASS CAP S.E. COR OF THE N.E. 1/4 SEC. 4-B-21 N 438,317.95 E 2,532,267.95

CONC. MON. W/ BRASS CAP S.E. COR OF THE N.E. 1/4 SEC. 4-B-21 N 438,317.95 E 2,532,267.95

CONC. MON. W/ BRASS CAP S.E. COR OF THE N.E. 1/4 SEC. 4-B-21 N 438,317.95 E 2,532,267.95

CONC. MON. W/ BRASS CAP S.E. COR OF THE N.E. 1/4 SEC. 4-B-21 N 438,317.95 E 2,532,267.95

CONC. MON. W/ BRASS CAP S.E. COR OF THE N.E. 1/4 SEC. 4-B-21 N 438,317.95 E 2,532,267.95

CONC. MON. W/ BRASS CAP S.E. COR OF THE N.E. 1/4 SEC. 4-B-21 N 438,317.95 E 2,532,267.95

CONC. MON. W/ BRASS CAP S.E. COR OF THE N.E. 1/4 SEC. 4-B-21 N 438,317.95 E 2,532,267.95

CONC. MON. W/ BRASS CAP S.E. COR OF THE N.E. 1/4 SEC. 4-B-21 N 438,317.95 E 2,532,267.95

CONC. MON. W/ BRASS CAP S.E. COR OF THE N.E. 1/4 SEC. 4-B-21 N 438,317.95 E 2,532,267.95

CONC. MON. W/ BRASS CAP S.E. COR OF THE N.E. 1/4 SEC. 4-B-21 N 438,317.95 E 2,532,267.95

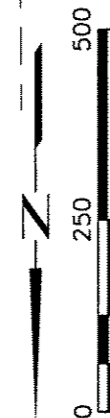
CONC. MON. W/ BRASS CAP S.E. COR OF THE N.E. 1/4 SEC. 4-B-21 N 438,317.95 E 2,532,267.95

CONC. MON. W/ BRASS CAP S.E. COR OF THE N.E. 1/4 SEC. 4-B-21 N 438,317.95 E 2,532,267.95

CONC. MON. W/ BRASS CAP S.E. COR OF THE N.E. 1/4 SEC. 4-B-21 N 438,317.95 E 2,532,267.95

CONC. MON. W/ BRASS CAP S.E. COR OF THE N.E. 1/4 SEC. 4-B-21 N 438,317.95 E 2,532,267.95

CONC. MON. W/ BRASS CAP S.E. COR OF THE N.E. 1/4 SEC. 4-B-21 N 438,317.95 E 2,532,267.95



- Scale in feet**
- SET 3/4" IRON ROD 24"(119-14.0) IN LENGTH WEIGHING 1.50 LBS PER LINEAL FOOT.
  - FOUND 3/4" IRON ROD PROPERTY CORNER UNLESS OTHERWISE NOTED
  - ⊕ FOUND U.S. PUBLIC LAND SURVEY MONUMENT AS NOTED
  - ② SEE SHEET 3 FOR BOUNDARY DETAILS
  - ③ SEE SHEET 3 FOR BOUNDARY DETAILS
  - ④ SEE SHEET 3 FOR BOUNDARY DETAILS

### NOTES

ALL DIMENSIONS AS SHOWN ARE MEASURED TO THE NEAREST HUNDRETH OF A FOOT

ALL BEARING REFERENCED TO THE WISCONSIN STATE PLANE COORDINATE SYSTEM SOUTH ZONE, EAST LINE OF THE N.E. 1/4 OF SECTION 4-T8N-R21E PUBLISHED BY SEWRPC AS N00'20'42"W (JUNE, 2003)

CERTIFIED SURVEY MAP PREPARED FOR ALEXIAN VILLAGE OF MILWAUKEE, INC. OWNER OF RECORD IS ALEXIAN VILLAGE OF MILWAUKEE, INC.

SEE SHEET 3 FOR LOT 2 DETAIL AND CURVE TABLE.

SEE SHEET 2 FOR ALL ANGLES MEASURED AS INTERIOR ANGLES

COMBINED TOTAL ACREAGE FOR CERTIFIED SURVEY MAP IS 1,092.335 SQ.FT. OR 25.0766 ACRES

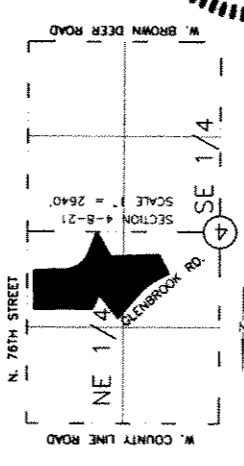
CURRENT ZONING IS DETAILED PLANNED DEVELOPMENT; SETBACK AND REQUIREMENTS ARE ESTABLISHED PER APPROVED ORD PLANS APPROVED ON MARCH 8, 2003 UNDER FILE NUMBER 031423.

ZONING: FD

FOR WATER AND SEWER EASEMENT AND LIMERICK RD. DETAILS SEE SHEET 4

- REPRESENTS BUILDINGS WITH TIES SHOWN ON SHEET 2
- ( ) REPRESENTS RECORDED AS DIMENSIONS

### VICINITY MAP



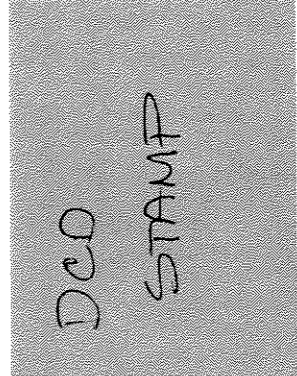
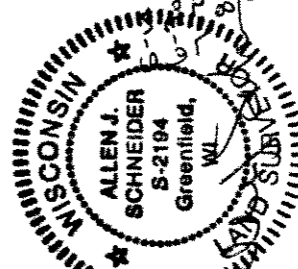
INFRASTRUCTURE SERVICES DIVISION

*Maria Lindholm* 10/6/04  
CENTRAL DRAFTING & RECORDS MANAGER

*M. Timothy Thum* 10/5/04  
ENGR. IN CHARGE ENVIRON. ENGR.

*Allen J. Schneider* 10/6/04  
CORRECT

CITY ENGINEER APPROVED



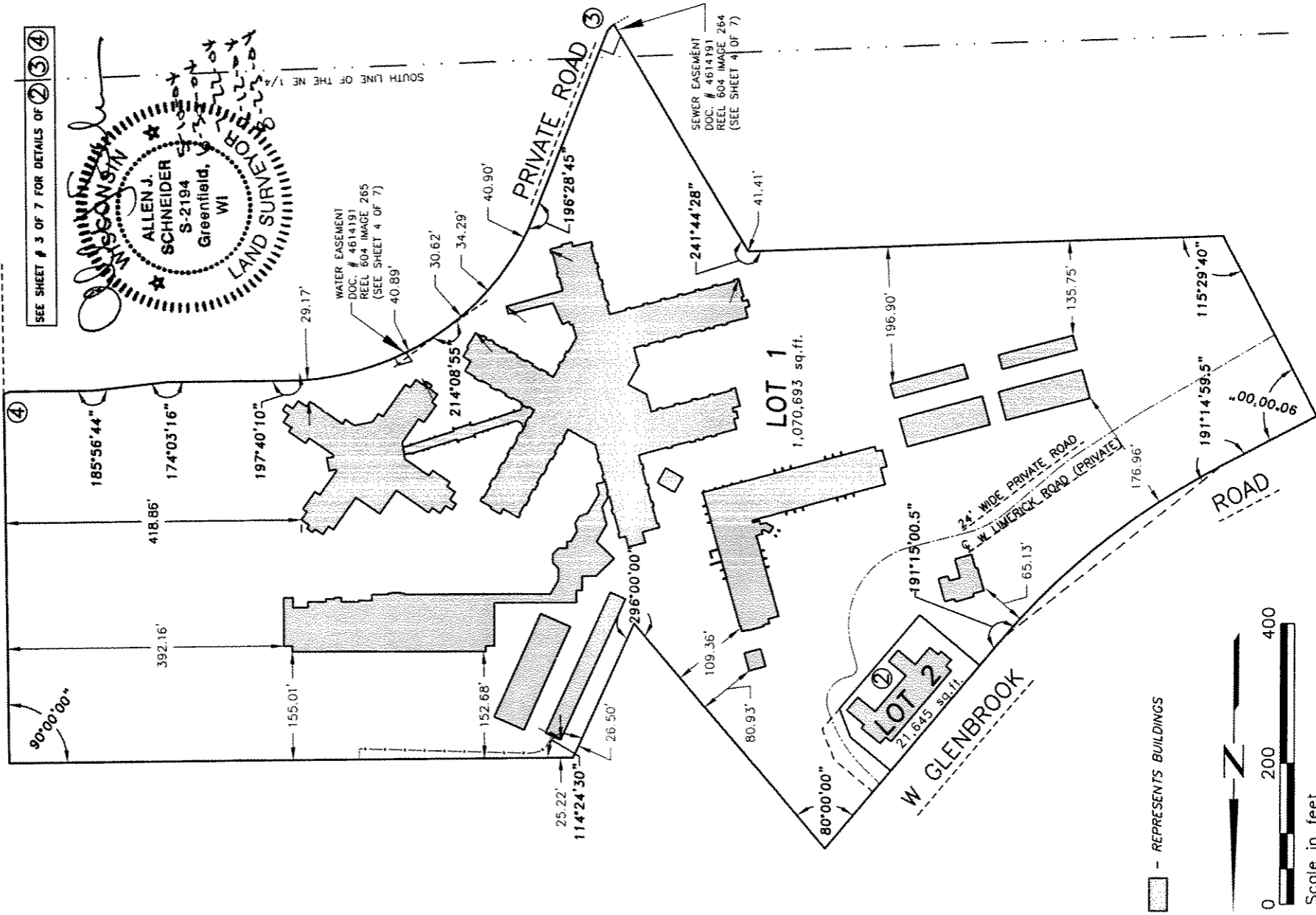
# MILWAUKEE COUNTY CERTIFIED SURVEY MAP NO.

BEING A REVISION OF A COMBINATION OF PARCEL 1 OF CERTIFIED SURVEY MAP NO. 4130 RECORDED ON NOVEMBER 25, 1981 IN THE MILWAUKEE COUNTY REGISTER OF DEEDS OFFICE AS DOCUMENT NUMBER 551,345,6, AND UNPLATTED LANDS, ALL BEING THAT PART OF THE SOUTHWEST 1/4 AND THE SOUTHEAST 1/4 OF THE NORTHEAST 1/4 AND THE NORTHEAST 1/4 OF THE SOUTHWEST 1/4 OF SECTION 4, TOWNSHIP 8 NORTH, RANGE 21 EAST, CITY OF MILWAUKEE, COUNTY OF MILWAUKEE, STATE OF WISCONSIN.

## INTERIOR ANGLES AND BUILDING DETAIL

NORTH 76TH STREET

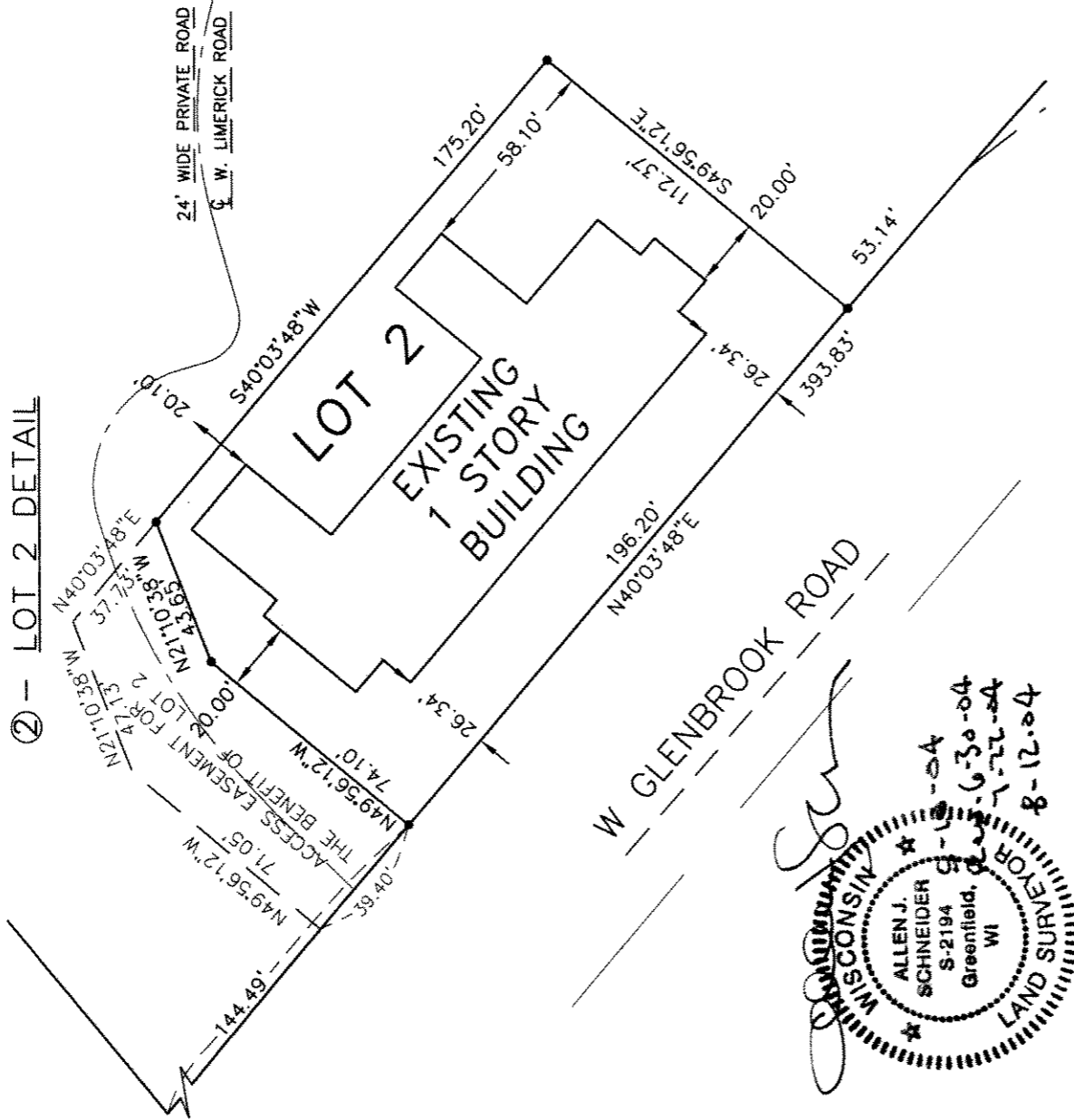
EAST LINE OF THE NE 1/4



N:\R08\8004198\Cad\dwg\80804198CSM.dwg NewJob Aug 23, 2004 - 11:17am

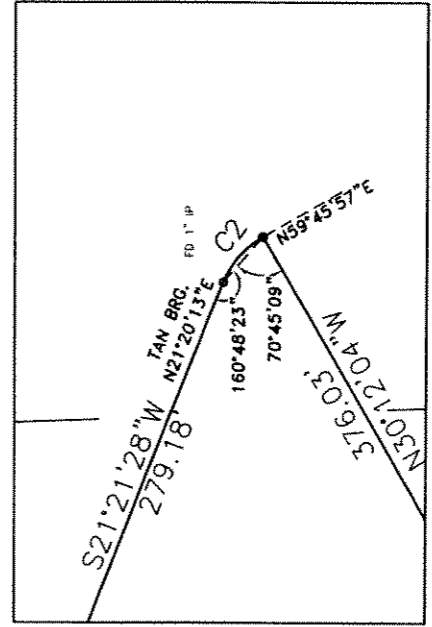
**MILWAUKEE COUNTY CERTIFIED SURVEY MAP NO.**

BEING A REDIVISION OF A COMBINATION OF PARCEL 1 OF CERTIFIED SURVEY MAP NO. 4130 RECORDED ON NOVEMBER 25, 1981 IN THE MILWAUKEE COUNTY REGISTER OF DEEDS OFFICE AS DOCUMENT NUMBER 5513456, AND UNPLATTED LANDS, ALL BEING THAT PART OF THE SOUTHWEST 1/4 AND THE SOUTHEAST 1/4 OF THE NORTHEAST 1/4 AND THE NORTHEAST 1/4 OF THE SOUTHEAST 1/4 OF SECTION 4, TOWNSHIP 8 NORTH, RANGE 21 EAST, CITY OF MILWAUKEE, COUNTY OF MILWAUKEE, STATE OF WISCONSIN.

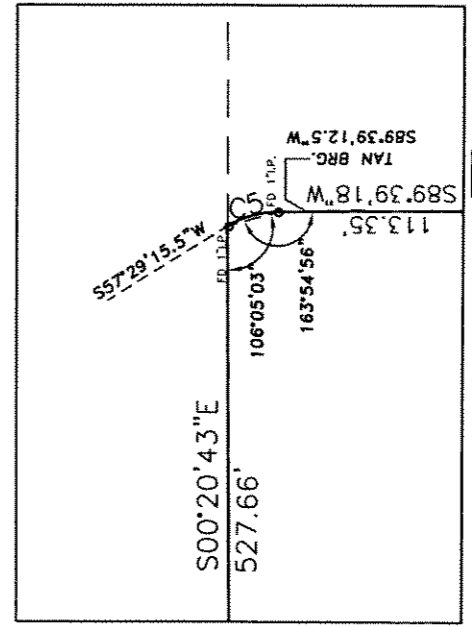


WISCONSIN  
 ALLEN J. SCHNEIDER  
 S-2194  
 Greenfield, WI  
 LAND SURVEYOR  
 6-30-04  
 1-22-04  
 8-12-04

③ - CURVE DETAIL



④ - CURVE DETAIL



**SHEET 1 CURVE TABLE**

CURVE TABLE FOR SHEET 1				RECORDED INFO	
CURVE	LENGTH	RADIUS	CHORD BEARING	CHORD LENGTH	CHORD LENGTH
C1	396.62	1010.00	N51°18'48.5"E	394.08	22°29'59" 1114.595'
C2	16.38	24.42	N40°23'05"E	16.07	32°25'44" 1912.52'
C3	210.87	366.58	S37°50'13"W	207.97	32°37'30" 16°28'45"
C4	236.18	382.92	S71°59'08"W	232.45	35°20'21" 117°40'10.5"
C5	137.1	24.42	N73°34'14"E	133.53	32°09'57" 16°04'58.5"

\* - CENTRAL ANGLE DENOTED BY °'



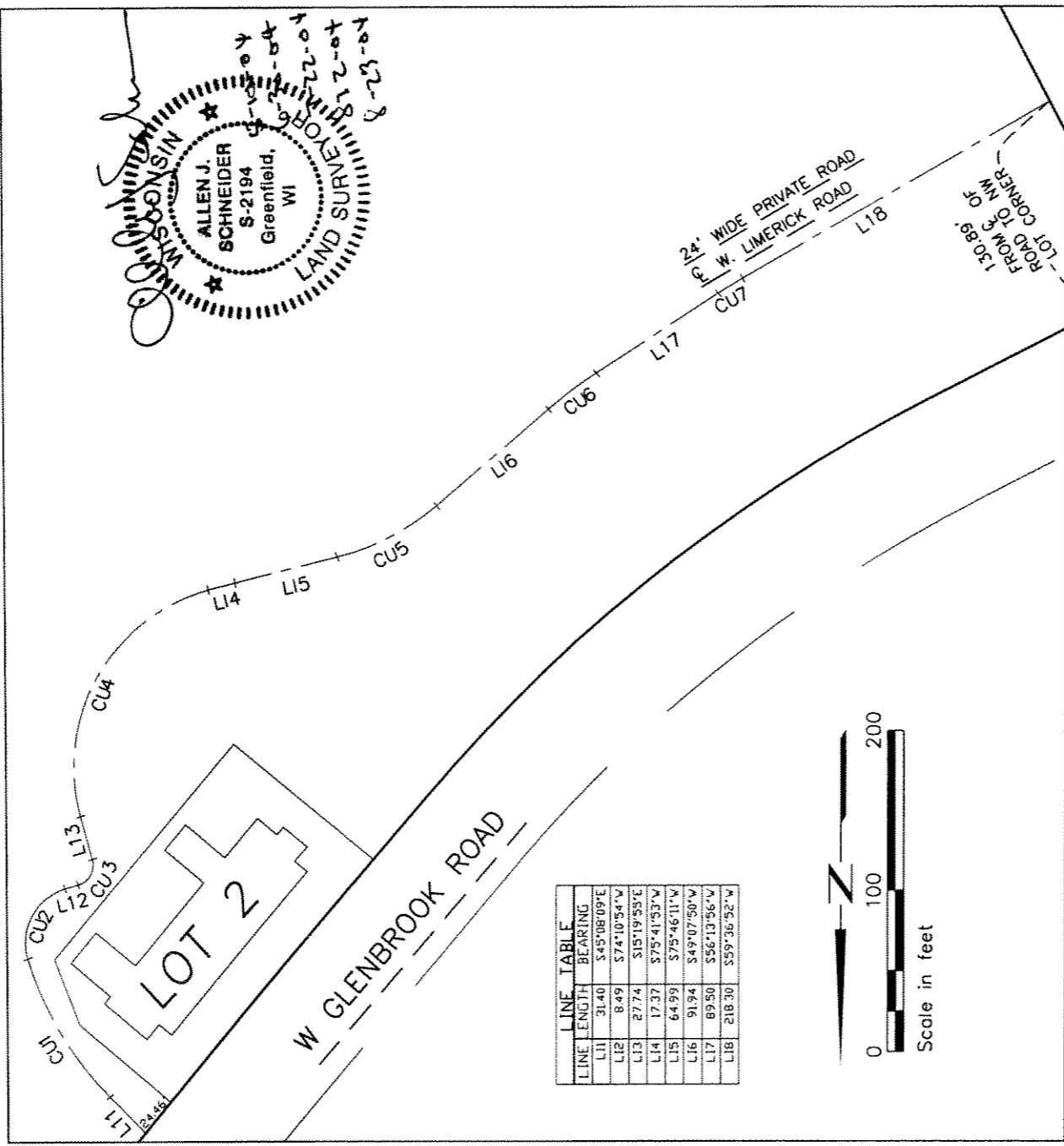
Scale in feet 3 OF 7 SHEETS

THIS INSTRUMENT WAS DRAFTED BY ALLEN J. SCHNEIDER RLS - 2194 OF BONEBROOK, ROSENE ANDERLIK, AND ASSOCIATES AT 12075 N. CORPORATE PARKWAY, MEDGON, WI 53092, 241-4486.

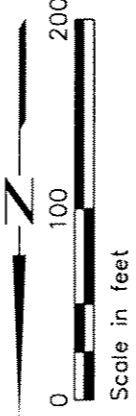
# MILWAUKEE COUNTY CERTIFIED SURVEY MAP NO.

BEING A REDIVISION OF A COMBINATION OF PARCEL 1 OF CERTIFIED SURVEY MAP NO. 4130 RECORDED ON NOVEMBER 25, 1981 IN THE MILWAUKEE COUNTY REGISTER OF DEEDS OFFICE AS DOCUMENT NUMBER 5513456, AND UNPLATTED LANDS, ALL BEING THAT PART OF THE SOUTHWEST 1/4 AND THE SOUTHEAST 1/4 OF THE NORTHEAST 1/4 AND THE NORTHEAST 1/4 OF THE SOUTHEAST 1/4 OF SECTION 4, TOWNSHIP 8 NORTH, RANGE 21 EAST, CITY OF MILWAUKEE, COUNTY OF MILWAUKEE, STATE OF WISCONSIN.

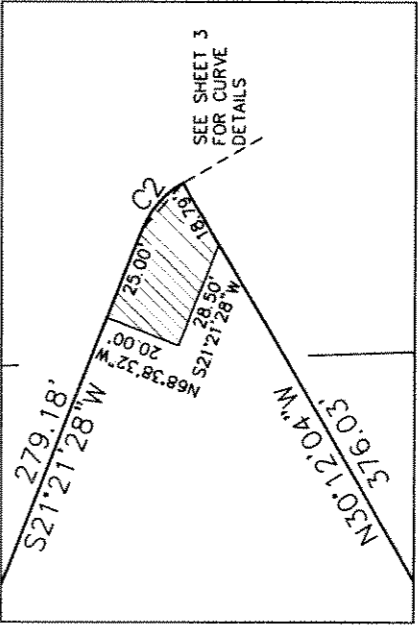
## EASEMENT AND WEST LIMERICK ROAD DETAIL



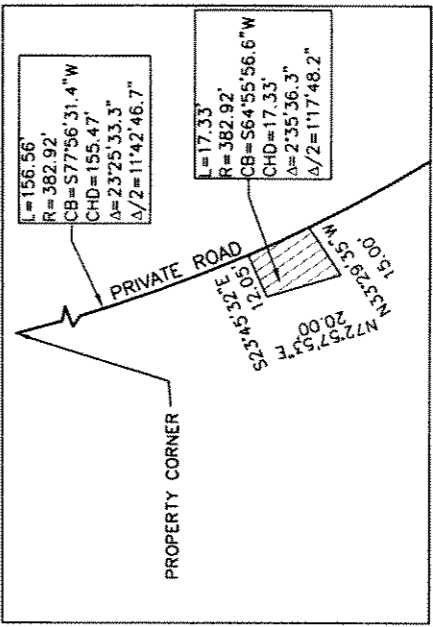
LINE	LENGTH	BEARING
LI1	31.40	S45°08'09"E
LI2	8.49	S74°10'54"W
LI3	27.74	S15°19'53"E
LI4	17.37	S75°41'53"W
LI5	64.99	S75°46'11"W
LI6	91.94	S49°07'50"W
LI7	89.50	S56°13'36"W
LI8	218.30	S59°36'52"W



### SANITARY SEWER EASEMENT DETAIL



### WATER EASEMENT DETAIL



CURVE TABLE FOR LIMERICK ROAD

CURVE	LENGTH	RADIUS	CHORD BEARING	CHORD LENGTH	1/2	TANGENT	TANGENT BEARING	IN TANGENT BEARING	OUT
CU1	100.73	202.00	N30°51'03.0"W	99.69	28°34'17.2"	141.7'86.6'	51.44	S45°08'11.6"E	S16°32'54.4"E
CU2	54.98	35.00	N20°26'02.0"E	49.50	90°00'21.0"	45°00'10.5"	35.00	S16°34'08.5"E	S73°26'12.5"W
CU3	20.31	13.00	S29°26'16.0"W	18.31	89°32'05.5"	44°46'2.8"	12.89	S74°12'18.8"W	S15°19'46.8"E
CU4	180.64	115.00	N29°40'09.0"E	162.63	89°59'48.4"	44°59'54.2"	114.99	S15°19'45.2"E	S74°40'03.2"W
CU5	69.75	150.00	S62°27'02.0"W	69.12	26°38'28.5"	131°19'14.3"	35.52	S75°46'16.2"W	S49°07'47.7"W
CU6	37.18	300.00	N52°40'53.0"E	37.16	7°06'05.7"	3°33'2.9"	18.62	S49°07'50.2"W	S56°13'55.8"W
CU7	17.71	300.00	N57°55'28.0"E	17.71	3°22'58.3"	1°41'59.2"	8.86	S56°13'58.9"W	S59°36'57.1"W

\* - CENTRAL ANGLE BENTD BY '1'



THIS INSTRUMENT WAS DRAFTED BY ALLEN J. SCHNEIDER RLS - 2194 OF BONESTROO, ROSENE ANDERLUK, AND ASSOCIATES AT 12075 N. CORPORATE PARKWAY, MEQUON, WI 53092, 241--4486.

## MILWAUKEE COUNTY CERTIFIED SURVEY MAP NO.

BEING A REDIVISION OF A COMBINATION OF PARCEL 1 OF CERTIFIED SURVEY MAP NO. 4130 RECORDED ON NOVEMBER 25, 1981 IN THE MILWAUKEE COUNTY REGISTER OF DEEDS OFFICE AS DOCUMENT NUMBER 5513456, AND UNPLATTED LANDS, ALL BEING THAT PART OF THE SOUTHWEST 1/4 AND THE SOUTHEAST 1/4 OF THE NORTHEAST 1/4 AND THE NORTHEAST 1/4 OF THE SOUTHEAST 1/4 OF SECTION 4, TOWNSHIP 8 NORTH, RANGE 21 EAST, CITY OF MILWAUKEE, COUNTY OF MILWAUKEE, STATE OF WISCONSIN.

### SURVEYORS CERTIFICATE

STATE OF WISCONSIN)  
 :SS  
 MILWAUKEE COUNTY)

I, ALLEN J. SCHNEIDER, REGISTERED LAND SURVEYOR FOR BONESTROO, ROSENE, ANDERLIK AND ASSOCIATES,  
 DO HEREBY CERTIFY:

THAT I HAVE SURVEYED, DIVIDED, AND MAPPED  
 A REDIVISION OF A COMBINATION OF PARCEL 1 OF CERTIFIED SURVEY MAP NO. 4130 RECORDED ON NOVEMBER 25,  
 1981 IN THE MILWAUKEE COUNTY REGISTER OF DEEDS OFFICE AS DOCUMENT NUMBER 5513456, AND UNPLATTED  
 LANDS, ALL BEING THAT PART OF THE SOUTHWEST 1/4 AND THE SOUTHEAST 1/4 OF THE NORTHEAST 1/4 AND THE  
 NORTHEAST 1/4 OF THE SOUTHEAST 1/4 OF SECTION 4, TOWNSHIP 8 NORTH, RANGE 21 EAST, CITY OF MILWAUKEE,  
 COUNTY OF MILWAUKEE, STATE OF WISCONSIN, DESCRIBED AS FOLLOWS:

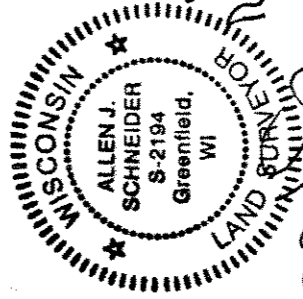
Commencing at the Southeast corner of said Northeast 1/4 Section; thence North 00°20'42" West, along the East line of said 1/4 Section, 973.27 feet; thence South 89°39'18" West, 87.00 feet to the POINT OF BEGINNING, said point also being on the westerly right-of-way line of North 76th Street; thence South 00°20'42" East, along said right-of-way line, 527.66 feet to a point on a curve; thence 13.71 feet along an arc of curve, whose radius point bears North 32°30'44.5" West, 24.42 feet, and has a central angle of 32°09'57" and a chord which bears South 73°34'14" West, 13.53 feet; thence South 89°39'18" West, 113.35 feet; thence South 83°42'34" West, 106.19 feet; thence South 89°39'18" West, 169.12 feet to a point on a curve; thence 236.18 feet along an arc of a curve, whose radius point bears South 02°20'41.5" East, 382.92 feet, and has a central angle of 35°20'21" and a chord which bears South 71°59'08" West, 232.45 feet to a point on a curve; thence 210.87 feet along an arc of a curve, whose radius point bears South 35°41'02" East, 366.58 feet, and has a central angle of 32°57'30" and a chord which bears South 37°50'13" West, 207.97 feet; thence South 21°21'28" West, 279.18 feet to a point on a curve; thence 16.38 feet along an arc of a curve whose radius point bears North 68°39'47" West, 24.42 feet, and has a central angle of 38°25'44" and a chord which bears South 40°33'05" West, 16.07 feet; thence North 30°12'04" West, 376.03 feet; thence South 88°03'28" West, 669.51 feet; thence North 27°26'12" West, 290.87 feet to a point on the southeasterly right-of-way line of West Glenbrook Road; thence North 62°33'48" East, along said southeasterly line, 152.00 feet to a point of curve; thence 396.62 feet continuing along said southeasterly line and along an arc of a curve whose radius point bears North 27°26'12" West, 1010.00 feet, and has a central angle of 22°29'59" and a chord which bears North 51°18'48.5" East, 394.08 feet; thence North 40°03'48" East, continuing along said southeasterly line, 393.83 feet; thence South 39°56'12" East, 419.46 feet; thence North 24°03'48" East, 210.00 feet; thence North 89°39'18" East, 800.00 feet to the POINT OF BEGINNING.

Said lands as described above contain 1,092,335 square feet or 25.0766 acres.

THAT I HAVE MADE SUCH SURVEY, LAND DIVISION AND MAP BY THE DIRECTION OF  
 ALEXIAN VILLAGE OF MILWAUKEE INC., 9301 N 76TH STREET, MILWAUKEE  
 WISCONSIN.

THAT THE MAP IS A CORRECT REPRESENTATION OF ALL THE EXTERIOR BOUNDARIES  
 OF THE LAND SURVEYED AND THE LAND DIVISION THEREOF MADE.

THAT I HAVE FULLY COMPLIED WITH CHAPTER 236 OF THE WISCONSIN STATUTES AND  
 CHAPTER 119 OF THE MILWAUKEE CODE OF ORDINANCES IN SURVEYING, DIVIDING,  
 AND MAPPING THE SAME.



*Allen J. Schneider*  
 ALLEN J. SCHNEIDER  
 S-2194  
 Greenfield, WI  
 DATE 8-12-04

**MILWAUKEE COUNTY CERTIFIED SURVEY MAP NO.**

BEING A COMBINATION OF PARCEL 1 OF CERTIFIED SURVEY MAP NO. 4130 RECORDED ON NOVEMBER 25, 1981 IN THE MILWAUKEE COUNTY REGISTER OF DEEDS OFFICE AS DOCUMENT NUMBER 5513456 AND UNPLATTED LANDS, ALL BEING THAT PART OF THE SOUTHWEST 1/4 AND THE SOUTHEAST 1/4 OF THE NORTHEAST 1/4 AND THE NORTHEAST 1/4 OF THE SOUTHEAST 1/4 OF SECTION 4, TOWNSHIP 8 NORTH, RANGE 21 EAST, CITY OF MILWAUKEE, COUNTY OF MILWAUKEE, STATE OF WISCONSIN.

OWNER'S CERTIFICATE

ALEXIAN VILLAGE OF MILWAUKEE, INC., DULY ORGANIZED AND EXISTING UNDER AND BY VIRTUE OF THE LAWS OF THE STATE OF WISCONSIN, AS OWNER, CERTIFIES THAT SAID COMPANY CAUSED THE LAND DESCRIBED ON THIS MAP TO BE SURVEYED, DIVIDED, AND MAPPED AS REPRESENTED ON THIS MAP IN ACCORDANCE WITH THE REQUIREMENTS OF CHAPTER 119 OF THE MILWAUKEE CODE OF ORDINANCES.

IN CONSIDERATION OF THE APPROVAL OF THE MAP BY THE COMMON COUNCIL OF THE CITY OF MILWAUKEE AND IN ACCORDANCE WITH CHAPTER 119 OF THE MILWAUKEE CODE THE UNDERSIGNED AGREES:

THAT ALL UTILITY LINES TO PROVIDE ELECTRIC POWER AND THE TELEPHONE SERVICE AND CABLE TELEVISION OR COMMUNICATIONS SYSTEMS LINES OR CABLES TO ALL PARCELS IN THE CERTIFIED SURVEY MAP SHALL BE INSTALLED UNDERGROUND IN EASEMENTS PROVIDED THEREFORE WHERE FEASIBLE.

I ALSO CERTIFY THAT THIS MAP IS REQUIRED BY S. 236.10 OR 236.12 TO BE SUBMITTED TO THE FOLLOWING FOR APPROVAL OR OBJECTION:

" CITY OF MILWAUKEE "

THIS AGREEMENT SHALL BE BINDING ON THE UNDERSIGNED AND ASSIGNS.

IN WITNESS WHEREOF, ALEXIAN VILLAGE OF MILWAUKEE, INC., HAS CAUSED THESE PRESENTS TO BE SIGNED BY GARY MOHN ITS President, AND COUNTERSIGNED BY MARIA DANIELS ITS Secretary AT Milwaukee WISCONSIN, THIS 15th DAY OF July 2004.

IN THE PRESENCE OF:

[Signature]  
(WITNESS)

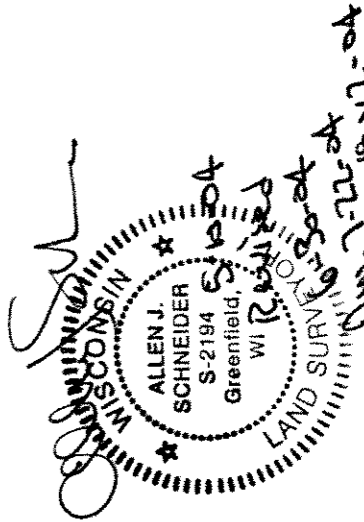
ALEXIAN VILLAGE OF MILWAUKEE, INC.

[Signature]  
GARY MOHN

[Signature]  
MARIA DANIELS

STATE OF WISCONSIN)  
:SS  
MILWAUKEE COUNTY)

PERSONALLY CAME BEFORE ME THIS 1 DAY OF July, 2004 GARY MOHN, President AND MARIA DANIELS Secretary, MEMBERS OF THE ABOVE NAMED COMPANY, TO ME KNOWN TO BE THE PERSONS WHO EXECUTED THE FOREGOING INSTRUMENT, AND TO ME KNOWN TO BE THE President AND Secretary OF THE ABOVE CORPORATION, AND ACKNOWLEDGED THAT THEY EXECUTED THE FOREGOING INSTRUMENT AS SUCH OFFICERS AS THE DEED OF THE CORPORATION, BY ITS AUTHORITY.



STATE OF WISCONSIN NOTARY PUBLIC,

MY COMMISSION EXPIRES 8.5.07



Stock No. 26273

DCO # 2385

# MILWAUKEE COUNTY CERTIFIED SURVEY MAP NO.

BEING A COMBINATION OF PARCEL 1 OF CERTIFIED SURVEY MAP NO. 4130 RECORDED ON NOVEMBER 25, 1981 IN THE MILWAUKEE COUNTY REGISTER OF DEEDS OFFICE AS DOCUMENT NUMBER 5513456, AND UNPLATTED LANDS, ALL BEING THAT PART OF THE SOUTHWEST 1/4 AND THE SOUTHEAST 1/4 OF THE NORTHEAST 1/4 AND THE NORTHEAST 1/4 OF THE SOUTHEAST 1/4 OF SECTION 4, TOWNSHIP 8 NORTH, RANGE 21 EAST, CITY OF MILWAUKEE, COUNTY OF MILWAUKEE, STATE OF WISCONSIN.

## CERTIFICATE OF CITY OF MILWAUKEE TREASURER

STATE OF WISCONSIN)  
MILWAUKEE COUNTY)

I, WAYNE F. WHITTON, BEING THE DULY ELECTED, QUALIFIED AND ACTING CITY TREASURER OF THE CITY OF MILWAUKEE, CERTIFY THAT IN ACCORDANCE WITH THE RECORDS IN THE OFFICE OF THE CITY TREASURER OF THE CITY OF MILWAUKEE THERE ARE NO UNPAID TAXES OR UNPAID SPECIAL ASSESSMENTS ON THE LAND INCLUDED IN THIS CERTIFIED SURVEY MAP.

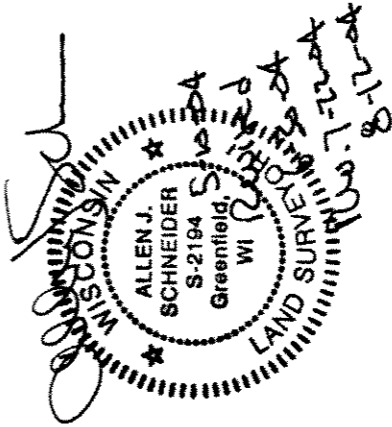
10 27 04

DATE

*Wayne F. Whitton*  
WAYNE F. WHITTON, CITY TREASURER

## CITY OF MILWAUKEE COMMON COUNCIL CERTIFICATE OF APPROVAL

I CERTIFY THAT THIS CERTIFIED SURVEY MAP WAS APPROVED UNDER RESOLUTION  
FILE NO. 040902 ADOPTED BY THE COMMON COUNCIL OF THE CITY OF  
MILWAUKEE ON November 3, 2004



*Ronald D. Leonardt*  
RONALD D. LEONHARDT, CITY CLERK

*Tom Barrett*  
TOM BARRETT, MAYOR