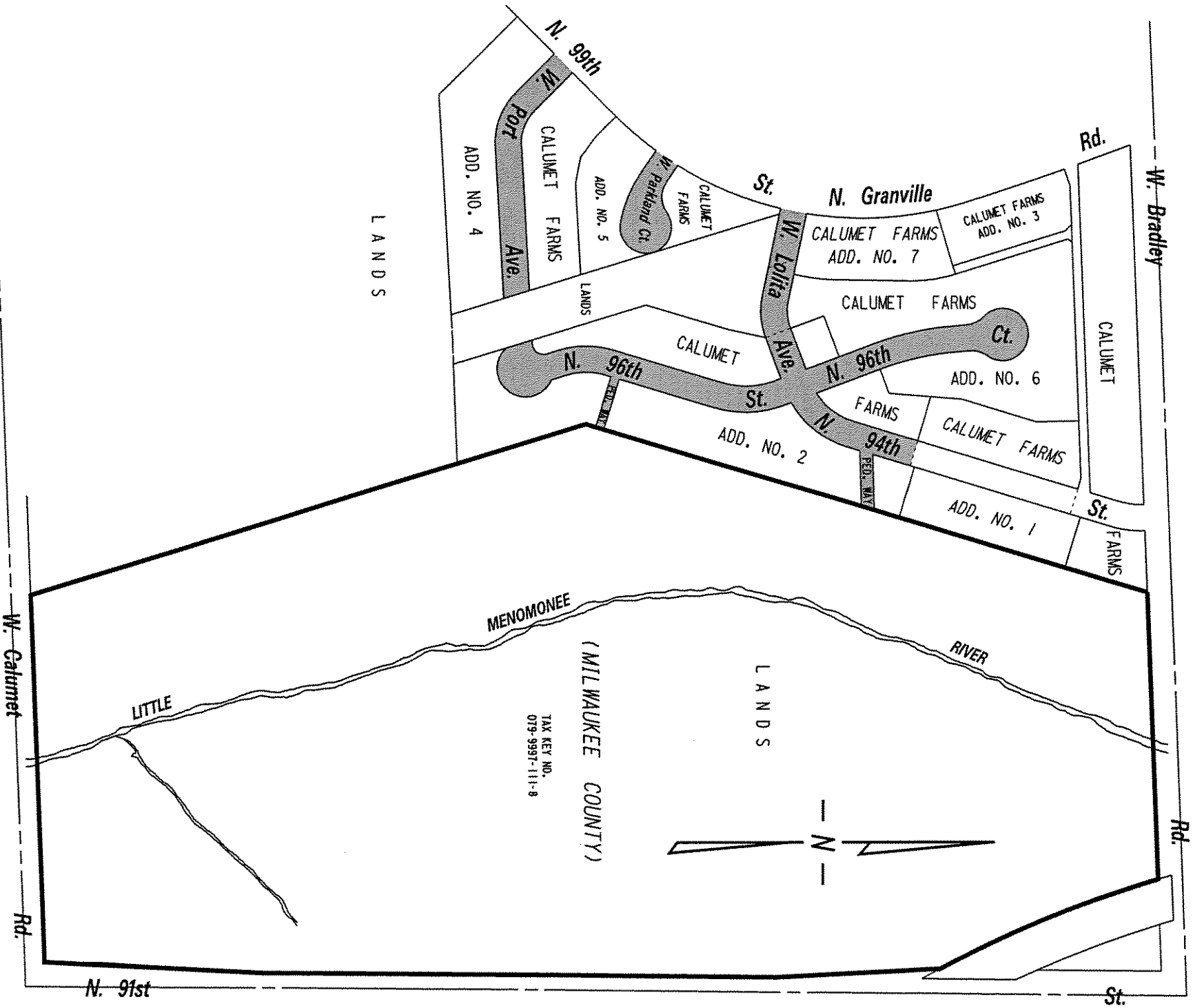
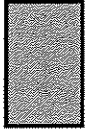


N.E. 1/4 SEC. 17, T.8N., R.22E.

79



 PUBLIC STREETS AND
 PEDESTRIAN WAYS
 PROPOSED TO BE VACATED

(MAP 1 OF 5)

EXHIBIT "A"
FILE NO. 050179
 INFRASTRUCTURE SERVICES DIVISION
 MILWAUKEE, WISCONSIN

ASSIGNED TO: P.A. VELLA
 DRAWN BY: P.A.V.
 PROJECT/GRANT NO.: WKS52337210
 APPROVED BY:

CH'K'D. BY: W.E. FUCHS
 DATE: AUG. 5, 2005
 SCALE: 1" = 300'

Maurice J. Indurka
Allyson D. Demick

CENTRAL DRAFTING & RECORDS MANAGER

CITY ENGINEER

W. Bradley

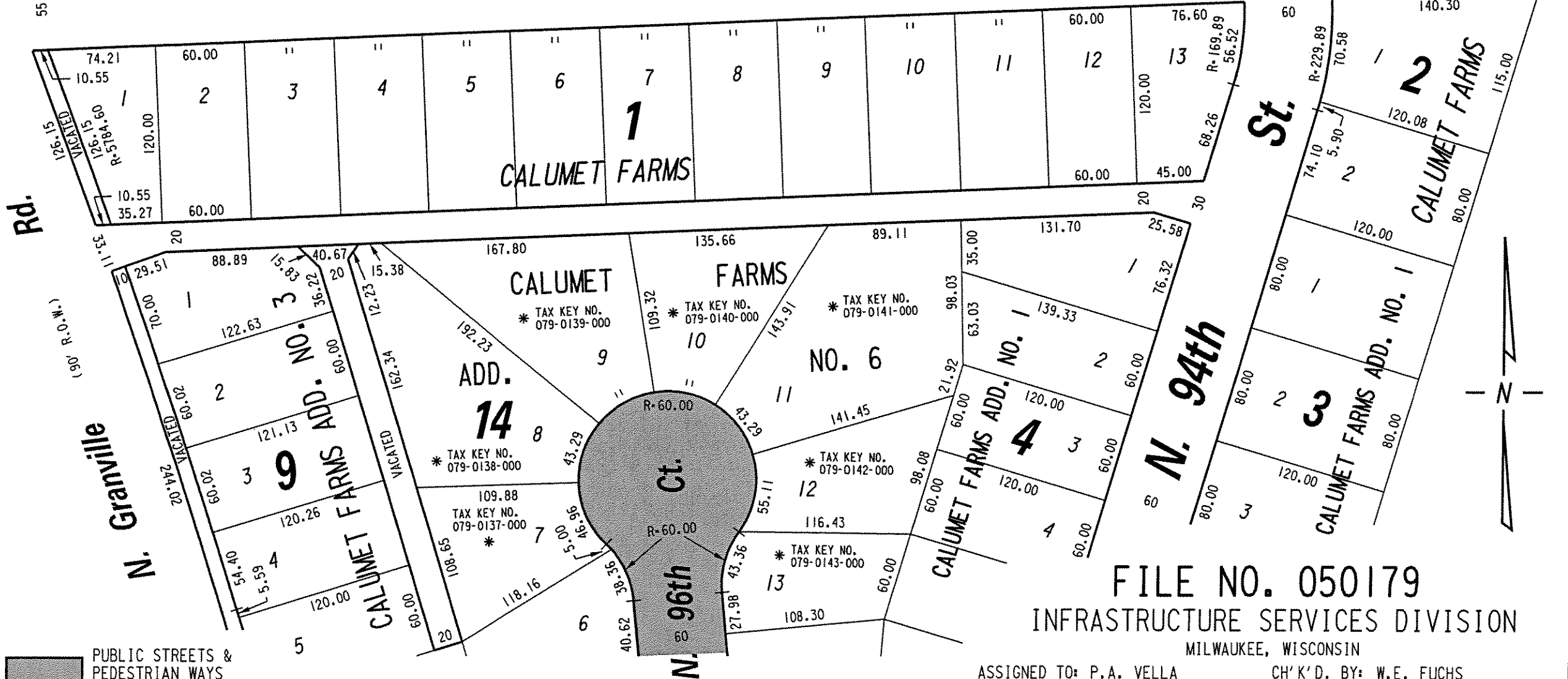
(110' R.O.W.)

SECTION LINE

Rd.

N.E. 1/4 SEC. 17, T.8N., R.21E.

79



 PUBLIC STREETS & PEDESTRIAN WAYS PROPOSED TO BE VACATED

* CITY OF MILWAUKEE

FILE NO. 050179

INFRASTRUCTURE SERVICES DIVISION

MILWAUKEE, WISCONSIN

ASSIGNED TO: P.A. VELLA

CH'K'D. BY: W.E. FUCHS

DRAWN BY: P.A.V.

DATE: AUG. 5, 2005

PROJECT/GRANT NO.: WK52337210

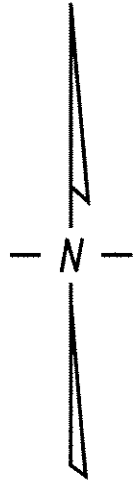
SCALE: 1" = 80'

APPROVED BY:

EXHIBIT "A"
(MAP 2 OF 5)

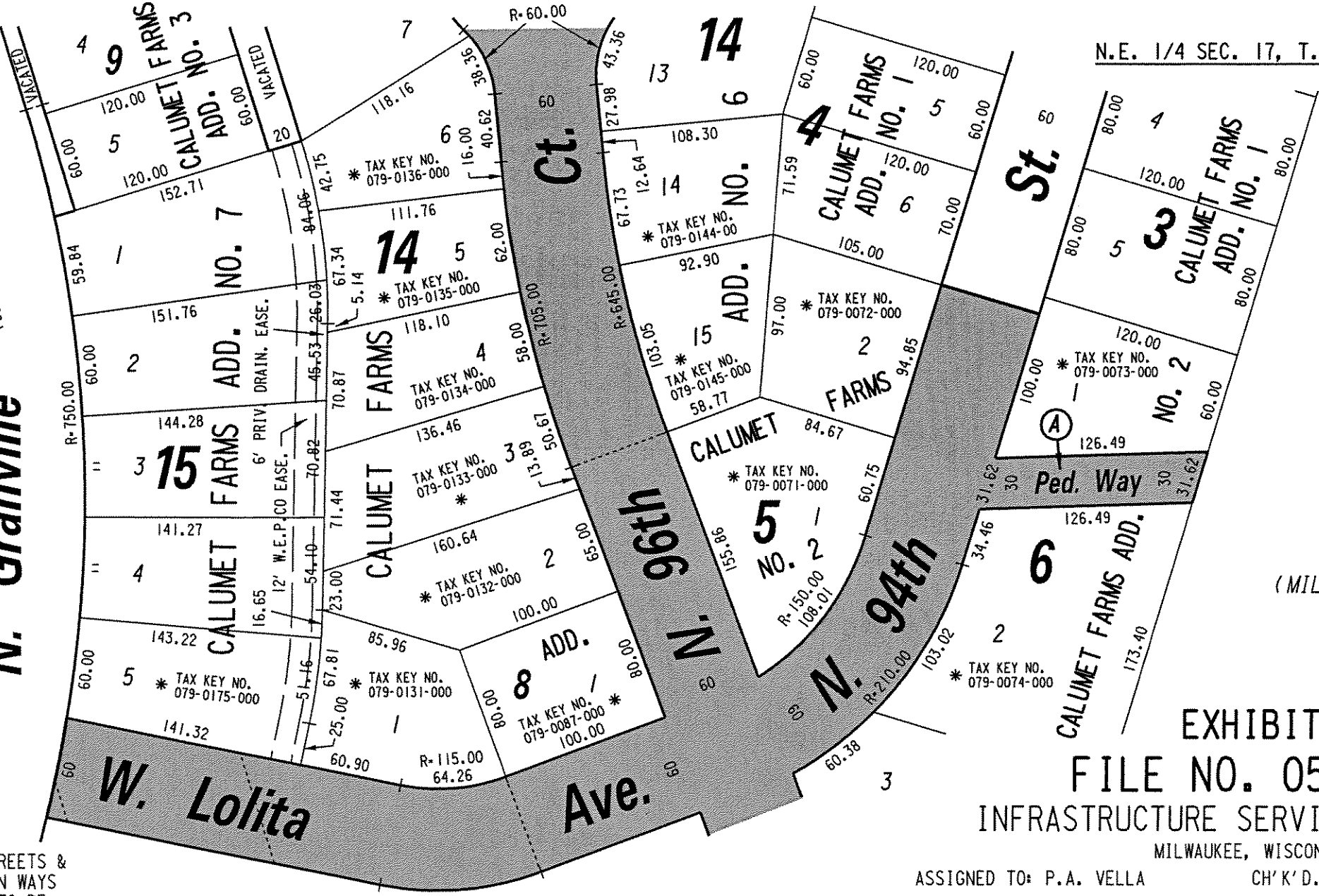
maria lindholm
CENTRAL DRAFTING & RECORDS MANAGER

[Signature]
CITY ENGINEER



N. Granville Rd.

(90' R.O.W.)



LANDS

TAX KEY NO. 079-9997-111

(MILWAUKEE COUNTY)

EXHIBIT "A"

FILE NO. 050179

INFRASTRUCTURE SERVICES DIVISION

MILWAUKEE, WISCONSIN

ASSIGNED TO: P.A. VELLA

CH'K'D. BY: W.E. FUCHS

DRAWN BY: P.A.V.

DATE: AUG. 5, 2005

PROJECT/GRANT NO.: WK52337210

SCALE: 1" = 80'

APPROVED BY:

marcia smidholw

[Signature]

CENTRAL DRAFTING & RECORDS MANAGER

CITY ENGINEER

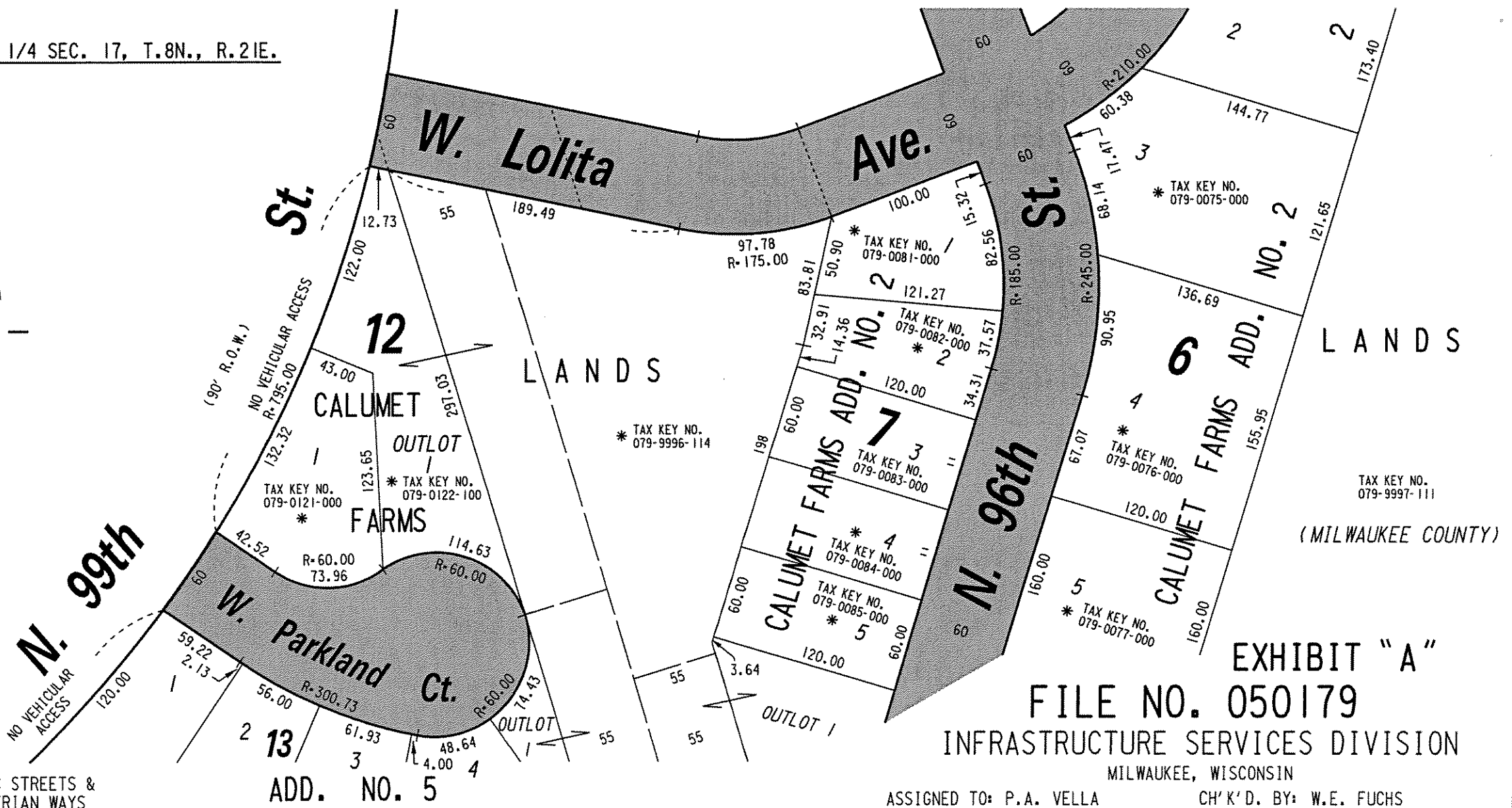
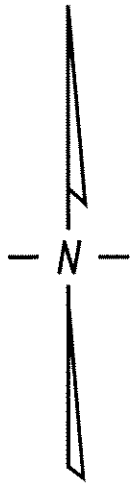
PUBLIC STREETS & PEDESTRIAN WAYS PROPOSED TO BE VACATED

* CITY OF MILWAUKEE

(MAP 3 OF 5)

79

N.E. 1/4 SEC. 17, T.8N., R.21E.



LANDS

TAX KEY NO. 079-9997-111

(MILWAUKEE COUNTY)

EXHIBIT "A"

FILE NO. 050179

INFRASTRUCTURE SERVICES DIVISION

MILWAUKEE, WISCONSIN

ASSIGNED TO: P.A. VELLA CH'K'D. BY: W.E. FUCHS

DRAWN BY: P.A.V. DATE: AUG. 5, 2005

PROJECT/GRANT NO.: WK52337210 SCALE: 1" = 80'

APPROVED BY:

Marcia Lindholm
CENTRAL DRAFTING & RECORDS MANAGER

Chris J. Flumbe
CITY ENGINEER

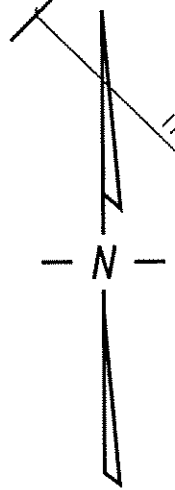
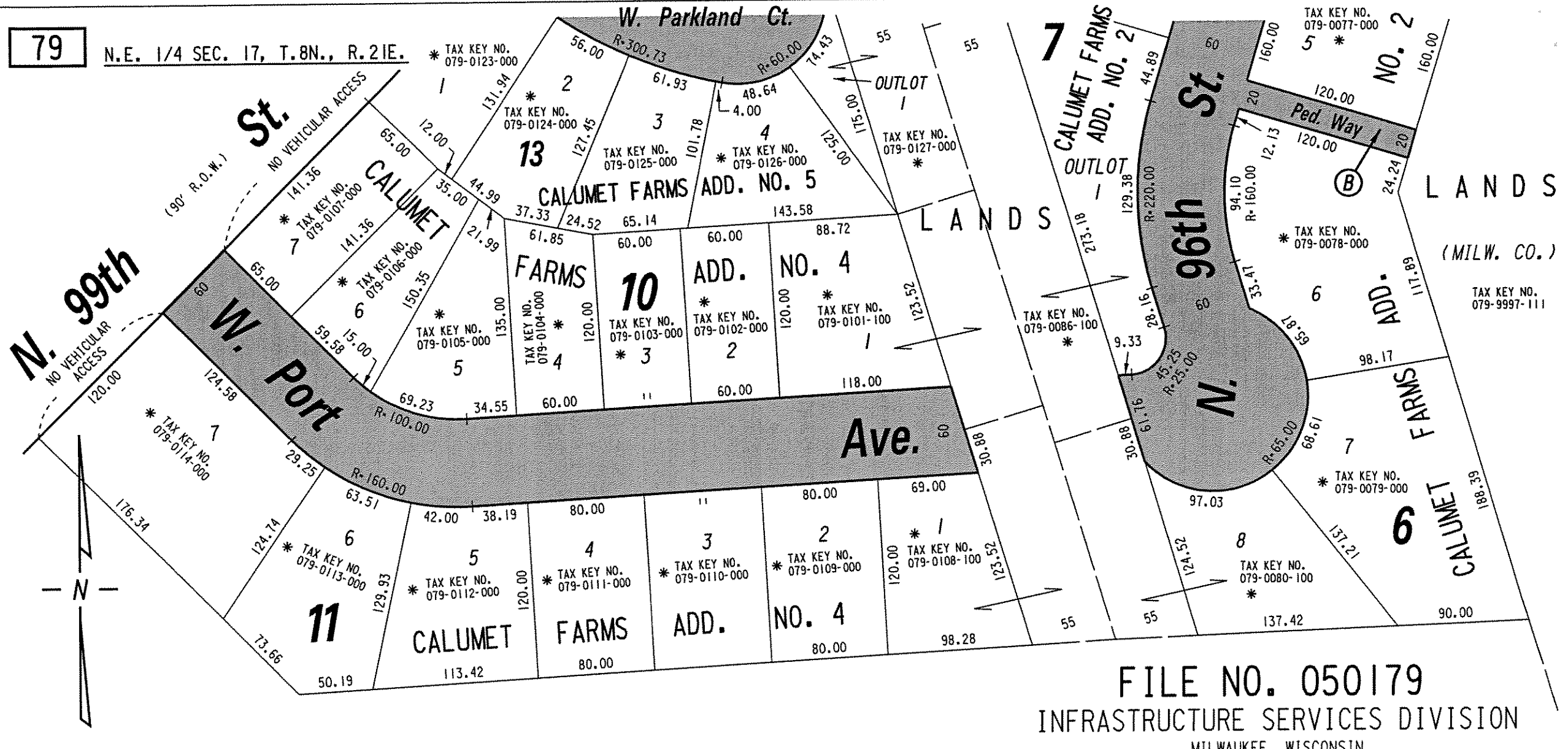
* CITY OF MILWAUKEE

(MAP 4 OF 5)

 PUBLIC STREETS & PEDESTRIAN WAYS PROPOSED TO BE VACATED

79

N.E. 1/4 SEC. 17, T.8N., R.21E.



 PUBLIC STREETS & PEDESTRIAN WAYS PROPOSED TO BE VACATED

* CITY OF MILWAUKEE

EXHIBIT "A"
(MAP 5 OF 5)

FILE NO. 050179
INFRASTRUCTURE SERVICES DIVISION
MILWAUKEE, WISCONSIN

ASSIGNED TO: P.A. VELLA
DRAWN BY: P.A.V.
PROJECT/GRANT NO.: WK52337210
APPROVED BY:

CH'K'D. BY: W.E. FUCHS
DATE: AUG. 5, 2005
SCALE: 1" = 80'

Maria Lindholm
CENTRAL DRAFTING & RECORDS MANAGER

W.E. Fuchs
CITY ENGINEER