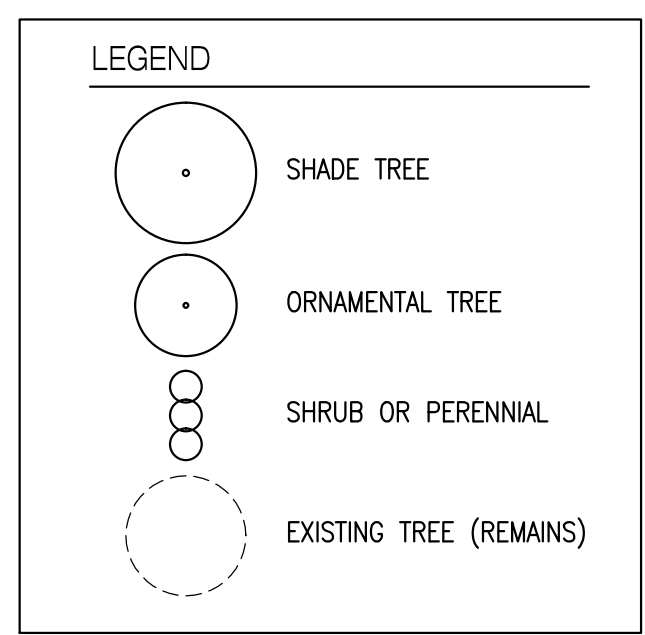


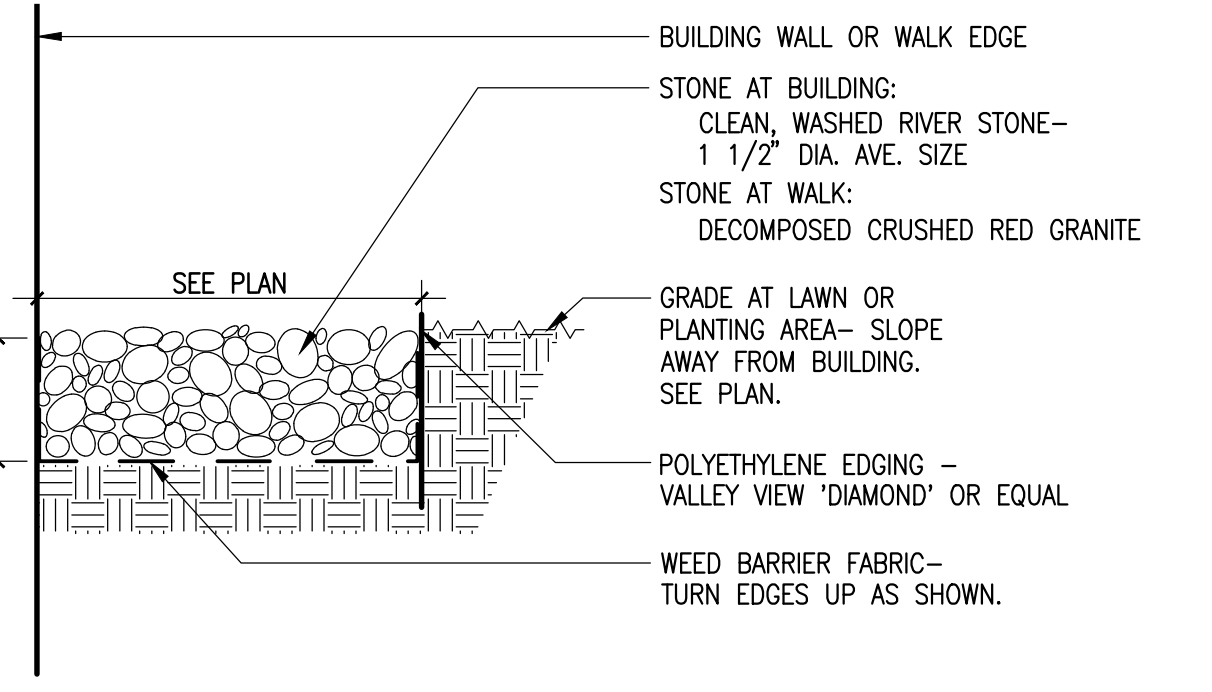
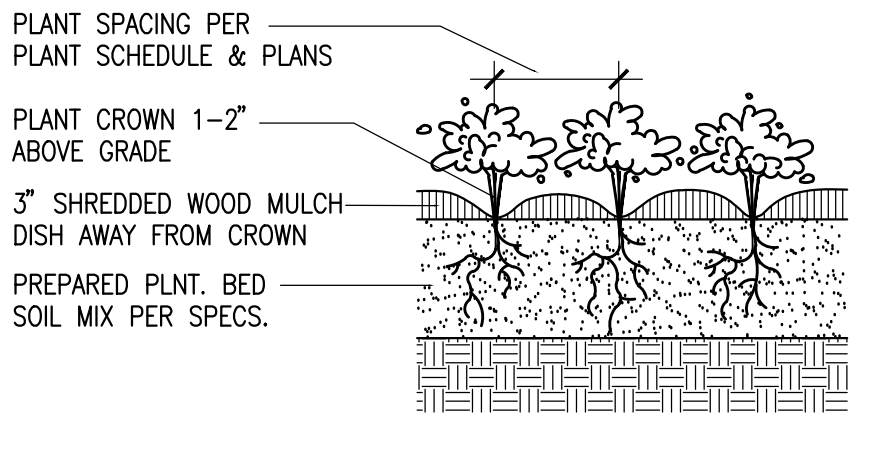
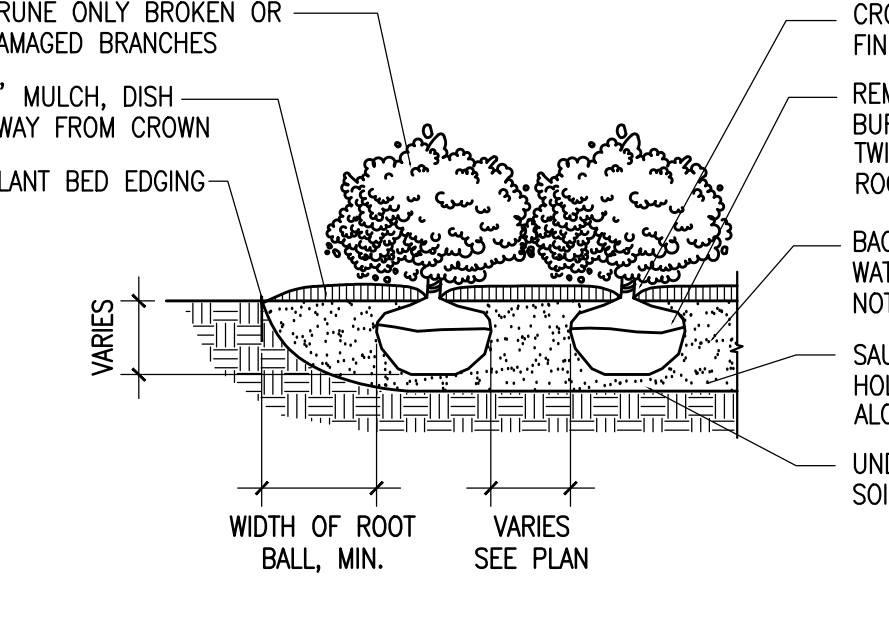
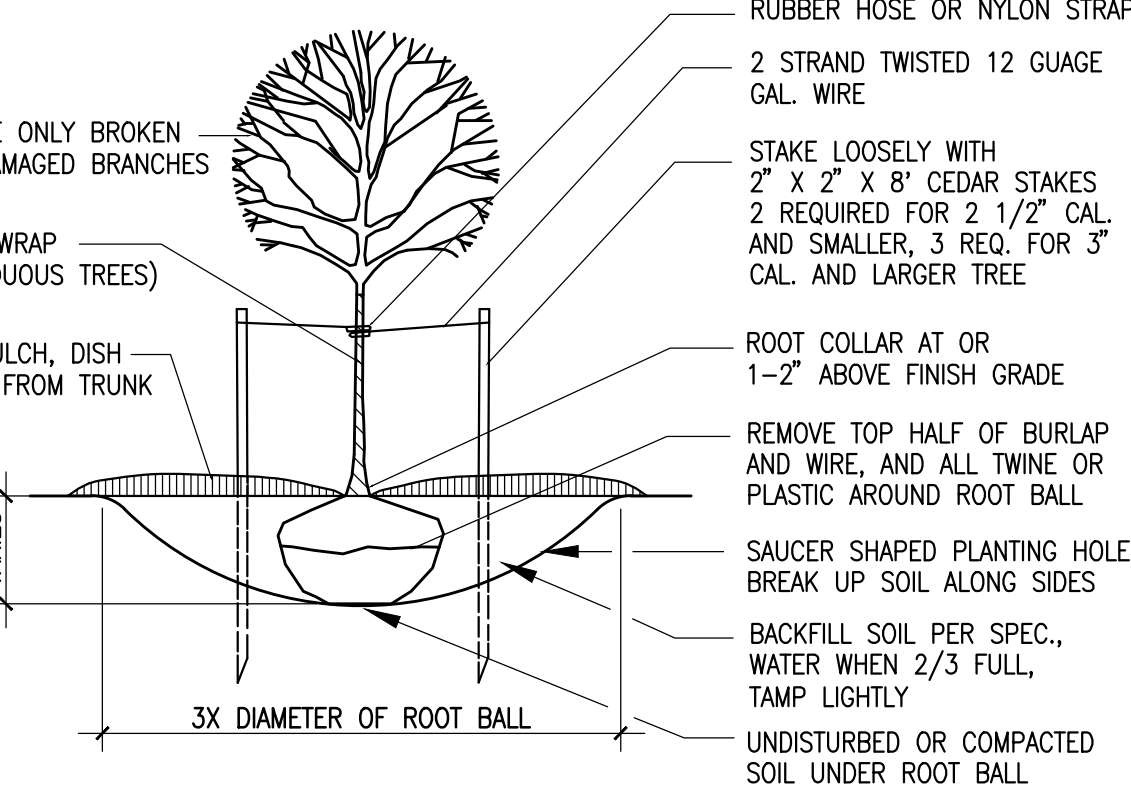
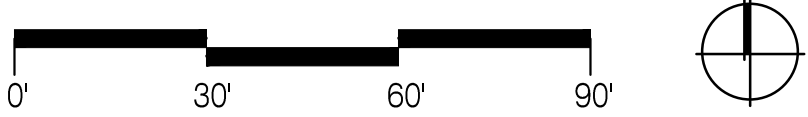
- PRAIRIE WILDFLOWERS AND GRASSES LIST:  
 BIG BLUESTEM  
 VIRGINIA WILD RYE  
 SWITCHGRASS  
 INDIANGRASS  
 LITTLE BLUESTEM  
 RED MILKWEED  
 NEW ENGLAND ASTER  
 CARDINAL FLOWER  
 TALL JOE PYE WEED  
 BERGAMONI  
 ORANGE CONEFLOWER  
 WHITE TURTLEHEAD



**7 BIOINFILTRATION PLANTING**

NOTE: PROJECT LANDSCAPE ARCHITECT TO FIELD REVIEW EXISTING CONDITIONS AND LOCATE PLANTS PRIOR TO INSTALLATION.

**1 LANDSCAPE PLAN**  
1" = 30'-0"



**6 PLANT SPECIES LIST**

KEY	COMMON NAME	BOTANICAL NAME	QUANTITY	SIZE/ROOT	NOTES
<b>TREES</b>					
AF	Jeffers Freeman Maple	<i>Acer freemanii</i> 'Jeffers'	15	2.5" cal. - b&b	
BN	River Birch	<i>Betula nigra</i>	9	2.5" cal. - b&b	Select multi-stemmed trees with 2-3 leaders
BP	Whitespire Birch	<i>Betula populifolia</i> 'Whitespire'	3	2.5" cal. - b&b	
CC	Thornless Crusader Hawthorn	<i>Crataegus crugoslii</i> var. <i>inermis</i> 'Crusader'	14	2.5" cal. - b&b	
GT	Shademaster Honeylocust	<i>Gleditsia triacanthos</i> var. <i>inermis</i> 'Shademaster'	19	2.5" cal. - b&b	
HP	Tardiva Hydrangea	<i>Hydrangea paniculata</i> 'Tardiva'	4	2 gal. cont.	
MH	Harvest Gold Crabapple	<i>Malus</i> 'Harvest Gold'	18	2.5" cal. - b&b	
PG	Black Hills Spruce	<i>Picea glauca</i>	9	8' height	
TA	Redmond Linden	<i>Tilia americana</i> 'Redmond'	7	2.5" cal. - b&b	
TR	Transplanted Evergreen Screen Shrubs	varies	78	5'-6' ht.	Project Architect to select specimen trees
<b>SHRUBS</b>					
BT	Crimson Pymy Japanese Barberry	<i>Berberis thunbergii</i> 'Crimson Pymy'	21	2 gal.	
BG	Green Gem Boxwood	<i>Buxus</i> 'Green Gem'	16	2 gal.	
FL	Happy Centennial Forsythia	<i>Forsythia</i> 'Happy Centennial'	24	2 gal.	
RR	Frau Dagmar Hastrop	<i>Rosa rugosa</i> 'Frau Dagmar Hastrop'	27	2 gal.	
RS	Snow Pavement Rose	<i>Rosa</i> 'Sneekoppe'	28	2 gal.	
WF	Wine and Roses Weigela	<i>Weigela florida</i> 'Alexandra'	16	2 gal.	
<b>GROUNDCOVER/PERENNIALS</b>					
AD	Deutschtand Astilbe	<i>Astilbe</i> 'Deutschtand'	18	1 gal @ 12" o.c.	
BC	Heartleaf Bergenia	<i>Bergenia cordifolia</i>	26	1 gal @ 18" o.c.	
CA	Karl Foerster Feather Reed Grass	<i>Calamagrostis x acutiflora</i> 'Karl Foerster'	16	1 gal @ 24" o.c.	
EP	Purple Coneflower	<i>Echinacea purpurea</i>	27	1 gal @ 24" o.c.	
HC	Mary Todd Daylily	<i>Hemerocallis</i> 'Mary Todd'	28	1 gal @ 24" o.c.	
HS	Stella de Oro Daylily	<i>Hemerocallis</i> 'Stella de Oro'	49	1 gal @ 24" o.c.	
HM	Purple Palace Coralbells	<i>Heuchera micrantha</i> 'Purple Palace'	30	1 gal @ 18" o.c.	
FA	Dwarf Fountaingrass	<i>Pennisetum alopecuroides</i> 'Hemeln'	21	1 gal @ 24" o.c.	
RH	Black-eyed Susan	<i>Rudbeckia hirta</i>	34	1 gal @ 24" o.c.	
ST	Autumn-Joy Sedum	<i>Sedum telephium</i> 'Autumn Joy'	39	1 gal @ 24" o.c.	
SH	Prairie Dropseed	<i>Sporobolus heterolepis</i>	40	1 gal @ 18" o.c.	

**Flad Architects**  
**Flad Structural ENGINEERS**

The Concord Group  
 Construction Consultants

**JPC**

ARNOLD & O'SHERIDAN  
 Consulting Engineers

GEIGER+LARSON ENGINEERING

MUERMANN ENGINEERING

Stamps & Approvals

Project Key Plan

**NOT FOR CONSTRUCTION**

Rev	Date	Description

Project Title  
**Wheaton Franciscan Healthcare**  
 St. Joseph  
 Family Care Center  
In partnership with the Medical College of Wisconsin

**WHEATON FRANCISCAN HEALTHCARE**  
 2400 W. VILLARD AVE.  
 MILWAUKEE, WI 53209

**FAMILY CARE CLINIC**

Project Phase  
**DETAILED PLAN DEVELOPMENT**

Date	Drawn By
06/10/11	JRD
Project Number	Checked By
11022-00	JRD

Sheet Title  
**LANDSCAPE PLAN AND DETAILS**

Sheet Number  
**L-101**

Rev. No.