

MEMORANDUM

Date: July 15, 2005

To: Members of Finance & Personnel Committee
Alderman Murphy, Chair
Alderman D'Amato, Vice Chair
Alderman Davis
Alderman Donovan
Alderman Witkowiak

From: Bob Greenstreet
Director of Planning and Design

Re: Annual Report – 2005

I have now been working with the Department of City Development for the past eleven months and am providing a review of activities to date. In the vacuum left following the departures of John Norquist and Peter Park, there had been some loss of focus, but Planning is staffed by highly qualified and experienced individuals and we have worked hard to regroup and concentrate on shaping our mission in relation to the needs of the administration and the City.

Progress to this point falls into two categories:

1. The Reorganization of Planning

By the redirecting of personnel skills to both take advantage of their strengths and better meet the needs of the Department and the City, we have reorganized. The details and rationale of the shift are contained in Appendix A, although the principal changes are:

- The reduction of one administrative layer.
- The formation of a new 'think tank' unit called Strategic Planning that is focusing on topical policy issues such as Big Box development, casino locations, the greening of Milwaukee, etc. The group has been busy focusing

on issues affecting long range planning (see Appendix B).

- The improvement of the Planning office space to better facilitate team interaction.
- The creation of the Design Review Team to provide rapid, 360° review of all design projects requiring City approval. (See Appendix C).
- The reassignment of a Senior Planner to focus priority attention on redevelopment plans within the Aldermanic Districts.
- The reformation of Planning staff into teams to reinforce the importance of completing the Area Plans.
- The sharpening of the Planning mission to better serve the needs of DCD, the administration, and the community. (See Appendix D).
- The creation of a clear plan for identifying Area Plans within the Comprehensive Plan.
- The development of an aggressive schedule of completion of all Area Plans and the Comprehensive Plan for the City of Milwaukee by the year 2010. (See Appendix E).
- The public presentation of the Planning vision to multiple audiences throughout South Eastern Wisconsin to ensure an accurate, consistent understanding of our role.
- The creation of 'Best Practices' guides for developers to help in the raising of the bar in design issues (window and door treatments, wall conditions, Big Box development, etc.).
- The creation of a database to ensure a strong foundation for the Mayor's Greening of Milwaukee Initiative.

2. The development of the City/Campus Partnership

One of my major goals in taking on the Directorship of Planning and Design was to forge a seamless, mutually beneficial partnership between the City and UWM. Thus far, the following interactions are in progress:

- The creation of four Service Scholar positions for UWM students to work at DCD (Long Range Planning, Historic Preservation, Neighborhood Design and Development Center). Another eight students will be joining the Main Street Program this year, and will be joined by as many as twelve students who are focused on city design issues through community Design Solutions.
- The appointment of two Planning personnel as Research Fellows at UWM to encourage research partnerships.
- UWM faculty working directly with DCD on projects:
 - Professor Huxhold (GIS)
 - Professor White (TIFs)
 - Matt Jarosz (Historic Preservation)
 - Professor Carlson (Menomonee Valley)
 - Carolyn Esswein (5th District Latin Quarter)
- Additional project support or city-wide projects is provided by:
 - Professor James Wesley
 - Professor Mark Kane
 - Professor Ray Isaacs
- Community Design Solutions at UWM has been working on the following projects in the City (see Appendix F for further details):
 - Howell Avenue streetscape
 - Relocation and design of Pagoda gas station
 - Relocation of National Liquor neon sign
 - Milwaukee Idea House
 - Wisconsin Historical Foundation Library renovation
 - Housing façade improvements, Harambee neighborhood
 - Holton Street streetscape
 - Layton Boulevard West façade design assistance
 - North King Drive
 - North and Fond du Lac streetscape
 - Façade grant program (Atkinson, Teutonia, and Chambers)
 - Main Street Program (6 areas planned)
 - Walnut Way urban gardens
 - American Freedom Museum designs
 - Layton Boulevard West market survey
 - Howell Avenue streetscape design
 - Bronzeville
 - Story Hill

Page 4
July 15, 2005

- Cesar Chavez Neighborhood
- German American Cultural Center
- United Community Center
- Keefe in the Harambee Neighborhood
- Calvary Baptist Church
- Burleigh Street BID
- Cambridge Neighborhood Association
- Westtown Neighborhood

- Creation of design forum, and Roundtables sponsored by UWM and Planning, to discuss topical design issues with the design community.

Appendix A

The Role of City Planning in the Barrett Administration

With the departure of the former Mayor and Director of Planning in late 2003, and the subsequent hiatus in planning momentum, an opportunity now exists to reconfigure the department to more clearly focus the mission and operations of the unit.

The Department of City Development is undergoing reorganization, so it is an appropriate time to evaluate the role of planning in relation to our constituents – other departmental units, the Mayor, the Common Council, the development community and, of course, the public.

The fine-tuning of our mission will need the input from all staff to ensure general consensus and a clear review of everything we do to make sure that, ultimately, the whole exceeds the sum of the parts. However, from my initial observations and discussions, I believe that planning needs to play a more aggressive role in initiating future development alternatives and becoming the catalyst for the city's vision for physical improvement. While the department currently carries out necessary work in the development of the Comprehensive Plan and Area Plans within the city, a 'think tank' component to help stimulate, inform and guide collective thinking is sorely missing and should become the vanguard to planning's role within DCD.

To that end, I am establishing a new Strategic Planning unit of planning that will become an important new resource DCD in exploring issues, gathering intelligence, analyzing data and helping share future policy and implementation.

The unit will be staffed by Senior Researchers Mike Maierle and Carolynn Leaman, two experienced individuals who will report directly to the Director as we craft our vision of the new Milwaukee.

The Strategic Planning unit will both respond to current planning needs within the Department — for example, the development of a position regarding the use of industrial land for commercial purposes and the identification of appropriate sites — but will also proactively identify issues of future consequence for the city that the department is currently unable to address. Areas of exploration may be initiated within the unit or be suggested by our constituents to the Director of Planning and Design.

The project planners will now report directly to the Director and Assistant director and will be given autonomy to administer their own projects within agreed timelines with input from the Director as needed.

In the early stages of the new arrangement, we will work together to establish a collective vision of planning and work with our colleagues in DCD to craft a broader vision of development for the Mayor and City. It will be necessary to sharpen and focus our mission by:

- Clearly defining our relationship to our constituents
- Clarify our tasks, responsibilities and decision-making authority
- Establish realistic timelines for completion
- Match resources to outcomes
- Clearly communicate the value of our work

Strategic Planning Section

The Strategic Planning Section of the Planning Division dedicates senior staff capacity to evaluating policy alternatives regarding development issues, managing and collaborating on planning efforts that have a unique or high-profile nature, and researching emerging development issues and applying findings to special projects in a timely fashion. Products are developed for, and presented to, the Planning Director, Commissioner of DCD, Mayor's Office, Plan Commission, Redevelopment Authority, and Zoning and Neighborhood Development Committee.

Issues and projects that have Strategic Planning worked on in 2005 include:

Industrial land retention and redevelopment

Century City / Capital and 35th / Tower Automotive redevelopment plan COMPLETED

Century City / Capital and 35th / Tower Automotive action plan ON-GOING

Industrial zoning paper COMPLETED

Real estate transactions COMPLETED

Oversight of specific area plans as needed:

Third Ward Comprehensive Plan collaboration COMPLETED

Southeast Side Comprehensive Plan collaboration ON-GOING

S. 27th St. development strategies ON-GOING

Third Ward Design Guidelines (coordination with Third Ward) ON-GOING

Green Development

Mayor's Green Task Force participation ON-GOING

Greater Johnson's Park (Collaboration with Urban Open Space Foundation) ON-GOING

Lloyd St. storm water project ON-GOING

ICLEI and Joyce Foundation (Great Lakes) grant AWARDED

EPA Great Cities AWARDED

Transportation issues

Draft letter opposing state budget for Zoo interchange COMPLETED

SEWRPC transportation advisory committee ON-GOING

Transit connector -- Evaluation of alternatives ON-GOING

Policy issues

Background research on casinos COMPLETED

Letter to SEWRPC on water work plan COMPLETED

Big box (large format retail) development trends and guideline research ON-GOING

Development of a conservation district policy PROSPECTIVE

Strategic Planning Projects and Timelines

Draft Jul 14, 2005

Dates >	2005	Jan	Feb	Mar	Apr	May	Jun	Jul	Aug	Ongoing
Projects V										
1. Leadership / management			Define mission of section	Schedule projects	Begin seeking budget approval					
2. Industrial Land Policy		Presented Friedman study	Write airport corridor paper	Retention of industrial zoning memo					Prime Industrial Corridor Land Identification Study	
3. Big Box Policy		Ongoing testing of Friedman study recommendations on individual development proposals. Examples: 2727 W. Silver Spring Dr., 5301 N. Hopkins, 938 W. Layton	Research market and best practices	Big box location principles	ICSC conference			S. 27th St. development strategies		
4. Green/sustainable - Stormwater initiatives		Memo on BMP for big box parking	Developing two prototypes incl. Target on Capitol Dr.	Speak at the Value of Sustainability Conference 15	Conference Apr 13					
5. Green/sustainable - Other initiatives		*BMP is Best management Practices	Organize CDF presentation to Mayor and Dept. heads	Organize WGBA	Porous paving ordinance review and information packet				Final Draft	
6. Urban Renewal Plans: Century City / Capitol and 35th / Tower Automotive		Participate on Green Initiatives Task Force	Distributed "Environmental Management for Local Governments" paper	Liaison with Groundworks and Ford du Lac and North Neighborhood Green Space programming	Prepare renewal plan				Construction	Educational program
7. University liaison		Received planning grant earmark	Designated renewal boundary	U. of IL- 30th St. Industrial Corridor Study	Renewal Plan Approved				Harvard Graduate School of Design Studio Publication	
8. Transportation policy		Met with UWM	Connector NW route analysis	Connector evaluation and recommendation						Research and recommend uses
9. Conservation District policy										
10. Comprehensive planning support		Review and approval phase of the Third Ward Plan		Collaborate on Southeast Side Plan	CC approves on 12 Third Ward Guidelines					
11. Mayor and commissioner requests for planning and strategic support		Researched case no negotiation position	MacArthur Square information	Drafted letter on the SEWRPC regional water supply study				2nd funding meeting		SEWRPC transportation committee
12. Urban design research		Provided train station examples	Extended sale agreement Layton & Pennsylvania \$1.15 M	3607 N Richards \$110,000						VA grounds
13. Follow through on land development deals										

Indicates a document prepared and presented with PowerPoint®

Appendix C

Design Review Team

It can sometimes be difficult to keep abreast of the full range of projects under consideration in Milwaukee. They are initially introduced to any number of individuals throughout DCD and the Mayor's Office, often only fleetingly, and with a condition of confidentiality, and yet may then be subsequently touted as having City approval or blessing.

In order to provide a higher level of common knowledge of forthcoming projects among DCD personnel, and to minimize misunderstandings in the development community as to our formal support, two new practices are recommended.

1. The new spreadsheet which Martha Brown has recently constructed which briefly outlines each project, its status, and contact person should be expanded and reviewed regularly at the Weekly Updates meet.
2. The review process that is currently implemented by Vanessa Koster, Greg Patin and Bob Greenstreet on projects involving renewal plans, planned development, overlay districts and City lot/RACM sales should be formalized. It will be known as the Design Review Team (DRT), and all developers should be informed of its role as the primary formal approval mechanism on all such projects. Membership of the DRT should expand for each specific project as appropriate, and all approvals are advisory to the Commissioner.

In this way, "City Approval" can only be recognized by a formal design review process, which should help to clarify the extent of our support for a project in its early, formative stages.

Appendix D

Figure 10

Planning Division
Vision Statement

To develop and maintain a clear, supportable and sustainable vision for all future physical development in Milwaukee by being:

- **A catalyst** for positive, physical change through sound policy planning.
- **The impetus** for change by stimulating interest, passion, and enthusiasm for future development.
- **The consensus** builder among the City's stakeholders.
- **The creator** of alternative visions and options to meeting future aspirations in our community.
- **The developer** of Milwaukee's Comprehensive Plan and twelve Area Plans for our neighborhoods, which enhance and protect the built environment, reflect community priorities, and identify investment and development opportunities.
- **The initiator of** better development faster by streamlining the regulatory process and employing clear, predictable standards in a professional manner.

Appendix E

11/10/14

Existing and Future Area Plans

As of February 22, 2005

Completed Area Plans:

- Downtown
- Menomonee Valley
- Near West Side
- Fond du lac and North
- Northwest Side (1986)

Area Plans in Progress:

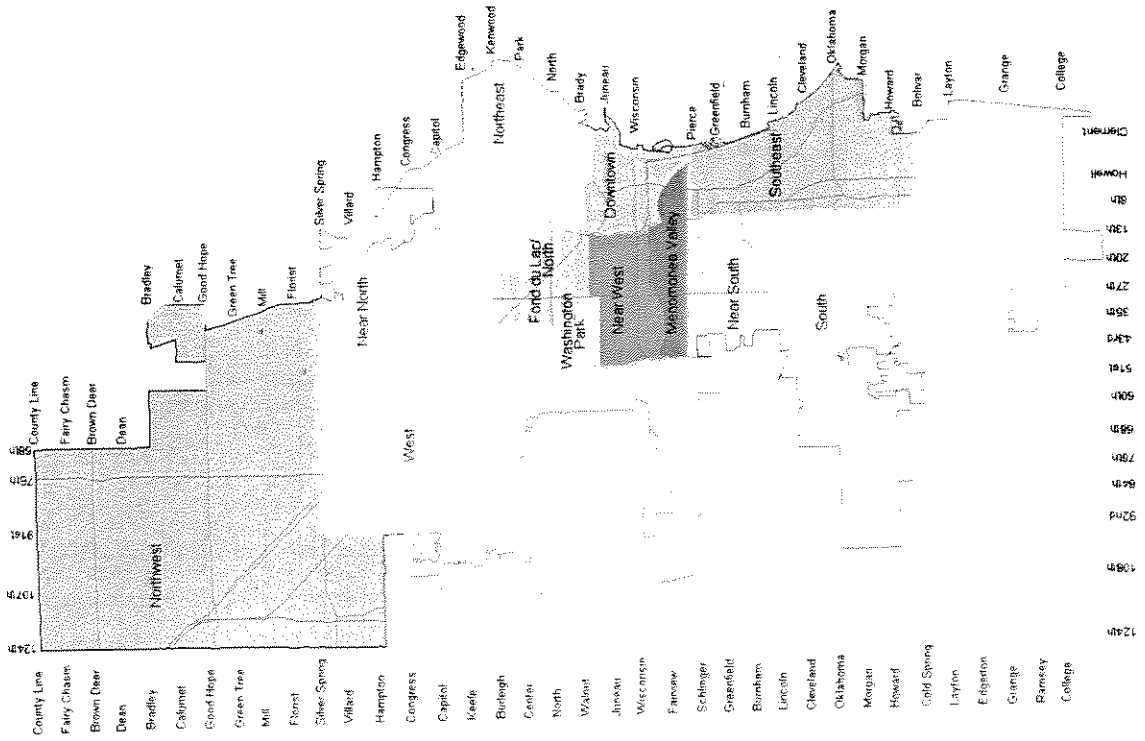
- Washington Park
- Downtown Update (Third Ward)

Priority Area Plans (Fundraising Stage):

- Southeast Side
- Northeast Side
- Northwest Side Update

Future Area Plans:

- Near South Side
- Near North Side
- West Side
- South Side



Area Plan	Projected Completion	Previously Budgeted	2004	2005	2006*	2007*	2008*	2009*
Downtown (Update)	2005	\$40,000						
Washington Park	2005	\$30,000						
Southeast	2006	\$25,000	\$12,500	\$37,500				
Northwest (Update)	2006		\$37,500	\$37,500				
Northeast	2007		\$25,000	\$25,000	\$25,000			
Near South	2008				\$37,500	\$37,500		
Near North	2008				\$37,500	\$37,500		
West	2009					\$25,000	\$50,000	
South	2010						\$25,000	\$50,000

Near West	2004							
Fondy & North	2004							
Downtown	1999							
Menomonee Valley	1998							
Northwest	1986							

*New Area Plans will only be budgeted if the following criteria is met:

1. Need for Plan;
2. Project Manager Available;
3. Funding Partners in Place

Appendix F

Projects Undertaken by the Quick Response Team of Community Design Solutions

January 2005 - January 2006

All these projects were done by Campus Design Solutions' Quick Response. The team consists of two PAs, student design members, a student planning consultant and faculty associates, who review and critique student work. Projects are assigned by the lead PA to specific members of the team so they become familiar with the neighborhoods and projects and from the Client's end it is clear who was doing the work for them. Students working on the projects included:

PAs: present: Kevin Vonderberg, Tarah Raaum, Maura Rogers (Main Street) **past:** Gokul Natarajan (March 01), Jeffrey Folstad (March 02), Kapila D. Silva (PhD 04), Adam Maier (MARCH 04), Yavuz Taneli,

Graduate Students: present: Adam Luckhardt, Janea Jordan, Jennifer Ott, Peter Jordan, Brian Domini **past:** Negin Beyhaghi (MARCH 04), D. Milam (BSAS '03), L. Strigens (joint degree fall'02) Nathan Guequierre (MUP 04)

Undergraduate: present: Michael Miller, Douglas Forton **past:** E. Bolsinger (BSAS 05), Kevin Vonderberg, Neil Grove, Ryan O'Connor, Juan Feliciano, E. Hegre, A. Koosman, A. Maier, N. Jung, J. Rennells, C. Maxwell, S. Pittz, N. Fernando, S. Khilani, A. Campbell, P. Treetipbut.




Web Designers: Steve Morales **past:** Nicholas Nowak, Gokul Natarajan

Faculty Associates: Associate Professors Mark Keane, Jim Wasley and Ray Issacs

Other Involved Faculty: Gerald Weisman, Gil Snyder, James Dicker, Sherry Ahrentzen, Nancy Frank

Research Consultant: Carolyn Esswein, MARCH/MUP.

TABLE FORMAT

		
Milwaukee	Campus	Other

Quick Response Team Projects

PROJECT	DESCRIPTION	PLAYERS	STATUS
Story Hill	Work with SHNA to develop optional uses for 2 1/2 acre greenhouse property	SHNA, maybe Harvey, QRT, Alderman Murphy, Steve Brachman	Attended first meeting on June 13, made short presentation and listened to concerns of group. Waiting to hear if they have use for our services since a second developer has been selected.
Bronzeville	Façade grant project-streetscape	Rhonda Manuel, Kevin	In planning stages
Cesar Chavez Neighborhood	Assistance in planning memorial to Cesar Chavez in center of neighborhood	Tarah Raaum, Milwaukee Alliance	Tarah held a workshop to introduce group to various ways of approaching the memorial and provided them with some ideas. Completed
German American Cultural Center	Detailed rendering of outside of proposed center for discussion by GA community at summer events	Hubka, Kevin, Adam, Emmeric Strigens, Jack Weissgerber and members of Board	Completed first renderings which was shown at July 18 barbecue, waiting for groups response. \$2,000 match at end of project
United Community Center- Adult Day Care expansion	Will double size of adult day care. Need drawings to give people idea of what the impact on the UCC building will be.	A. Kuty, G. Weisman, Institute on Aging & Environment, Ricardo Diaz, Rene Farias, Adam Luckhardt, Tarah Raaum	Held all day participatory workshop, created renderings from workshop suggestions, created final drawings.
Layton Blvd West Neighbors	Six Façade drawings requested in LBWN neighborhood. Will now meet with business on Burnham to discuss master plan/guidelines	Tarah Raaum, QRT, Sarah Puls, residents	Completed facades, met with LBWN team to discuss future activities. Sarah and Tarah have are setting up meetings in August
Charter School on Holton	Request for information about how to determine feasibility of renovation of existing building as a charter school	Chris Lawrence, Milwaukee Country Day School, Yavuz & Kevin	Made site visit and some recommendations
AUP Gallery Exhibit	Exhibit of recently completed QRT work.	Yavuz & Kevin	
Howell Street landscape project	Need for landscape improvements to the	Alderman Witkowski, Y. Taneli, QRT,	Presented to Alderman, reworked and represented. He

	street edge between the airport and the buildings on Howell. There is a need to give property owners ideas about how to improve the area.	T. Raatum	will share with business group that he is putting together and then they will contact ua about any follow-ups..
State Fair Pagoda	Roof reattachment and repair at new location	State Fair Park engineers – Paul Sergio, Jeff Jacobsen – Bob G and Marty G, Kapila	completed
Revival of Keefe in Harambee neighborhood	Suggestions for housing in-fill, business and housing facade improvements along Keefe between Palmer and N 2nd Street	WHEDA, Jesse Greenlee, Riverworks, Darryl Johnson, Yavuz	completed
Holton St bike trail and streetscape	Redo if Holton from Reservoir to Center. Inclusion of bike lanes, beautification of street, traffic modification.	DCD –Dan McAuliffe, Aldermen D'Amato and McGee, QRT	First ideas reviewed at mtg. Three options based on discussions developed, which are now being reviewed
CDS Video	Short dynamic explanation of what CDS is and what it does	Brian Schmitt and CW/Hammann – Kevin, Kapila, Yavuz	completed
Town of Lake Charter High School	Create 8-12 well designed images of renovated, critical spaces for the Town of Lake High School located at Shoales Middle School, South 20 th St.	Jim Dicker and Gil Snyder, Brian Domini, Mike Mervis	presented to possible supporters – Efforts underway to get official support of MPS for project, this summer will work with H. S. faculty to develop a visual literacy curriculum to be piloted in fall.
North King Drive Project	Redesign of existing building into apartment units, drawings for single and attached housing on rest of block N. 2nd & 5 th Streets	Welford Sanders, Kevin	Completed. Paid \$1,000
Facade Grant Program	North & Fondy Streetscape Initiative, exhibit at Legacy Bank of suggestions, worked on details with City engineers	Rhonda Manuel, Tom Cheney, Legacy bank (Sally Peiz), other businesses in area	Work completed.
Facade Grant Program	Atkinson, Teutonia and Chambers, triangle Vliet Street,	Rhonda Manuel, Tom Cheney, Kevin	completed
Main Street Program Pl-Yr1	Will do a variety of activities in 4 main street areas over 3 years as part of the planning team and also in partnership with individual Main Street neighborhoods	Nicole Robben, Maura Rogers, Sabrina Roberts Also Welford Sanders, Martin Luther King Drive and Charlotte John-Gomez, LBWN	Maura Rogers appointed PA to work with Nicole and LISC – Sabrina Roberts as design consultant to them and later as neighborhoods consultant.

	Attended focus meetings and early meetings of the design committees. Did panoramas of communities	Lisa Black, N. Robben, Sabrina S.4 Selected Main St. programs	QRT technical assistant to be determined after March '05 Decided they need undergrad intern at this time.
Peace Museum	Develop drawings of alternative concept for American Freedom Museum.	David Baldwin, Sanjeeva Guneratne, Yavuz, T. Hubka	Completed. Are changing venue
Walnut Way Model Block and urban gardens	Continue work on model block and urban gardens	MMSD, WWCC, QRT, Ray Isaacs, WHEDA	On-going - new proposal sent out to NPS Urban Forestry Programs, MMSD funding obtained to continue project.
United Community Center-	Re-design of building in park that fronts UCC, Walkers Square	Steve Morales, Jim Dicker, Hector Colon, Ricardo Diaz	Completed plan, neighborhood input, commitment to implement
Cavalry Baptist Church	Pictures of building to use as base line for pre-Marquette Interchange construction work.	Utzinger/Gorbanpor under discussion, Pastor McDonough	No action taken
Burleigh Street BID and Mainstreet Program Collaboration	Some streetscape and façade recommendations Development of a template for mainstreet program participants Work for Mainstreet Neighborhoods	Nicole Robben (DCD), Kathryn Berger (LISC), Jim Hiller, Jeane Meyers, Nancy Frank, Ed Beimbom, etc	Planning stages
Cambridge Neighborhood Assoc. and Cousins on Oakland	Work on ideas for façade redo, bus stop and unused park	Gil Snyder, QRT, Sharon Lerner, Neil Grove	Completed
SARUP Space Usage	Survey of existing uses of space in building	QRT	Played minor role in redesign of offices. Still have not done larger study.
Mitchell Hall office redesign	Provide interior design service to artist-in-residence	Bred Lichtenstein, QRT	completed
Center for Age and Environment office	Provide interior design service, including identifying colors and furniture to purchase	Ann Basting, QRT	Completed
Glacier Hills summer/fall 2005	Want wildlife refuge structure and nature center renderings	Web of Life Environmental Education Center, Inc - Ann Stoffel	
Turtle Lake Revisiting Summer 2005	Rural west WI town needs makeover	Bill Bell, Village manager, Tarah & Ravin	Will present ideas on July 21 in Turtle Lake

City of Whitewater Design Guidelines Phase 1 & 2 Spring 2005-	Will assist Community Development Administrator in developing design guidelines for downtown commercial strip	Gene Hackbarth, QRT team	Completed first set, and are completing a second facade
Oshkosh Living Learning, Serving Center	Develop a vision and rough plan for multi-million dollar living, learning, serving center	Richard Wells, Chancellor, Tom Sonnlleitner, Yavuz, Kaplia Center for Community Partnerships, Center for New Learning, Learning in Retirement Group	Well received presentation week of 9/26. Received thanks. Still mentioned as future project on UW-Oshkosh website
Westowne Neighbors	Waukesha project, Phase 2. Design of aging in place housing for second plot	Jim Bouman, Westowne Neighbors, Yavuz, Mike Miller, Kevin, Tarah, Ella	90% complete. Will make presentations to developer, mayor before end of July.

FACULTY PROJECT RECEIVING CDS SUPPORT

All projects listed below were initiated and led by faculty and paid in part or full with CDS funds. Most do not involve members of QRT staff and were selected for funding on the basis of written proposals.

PROJECT	DESCRIPTION	PLAYERS	STATUS
Edward A. Macdowell Montessori Elementary School	Suggestions for improvements to entrance and other parts of school building	Harvey Rabinowitz and students, Principal of Macdowell	Waiting for Harvey to get letter of agreement ready
Green Campus Initiative	Jim Wasley's efforts to increase sustainable architecture practices in UW campus building. Most recent, collaboration with MMSD and UW to develop campus plan to eliminate run-off from campus Mike Utzinger's fall Sustainable Architecture Studio worked on project for UW-Baraboo/Sauk County to explore possibility of their seeking LEED certification for planned new dorm and environmental learning center.	MMSD, UW-M, UW-Madison, other UW campus facilities planners, DNR, SARUP, geology, and engineering faculty and students Mike Utzinger, Sustainable Architecture Studio, Carolyn Davis, UW/B/S Administrative Services Assistant Dean	Will begin work late spring, ear summer, in planning stages and also on parking lot project - 2 grants from MMSD Completed project. Invoice requested to be sent to Baraboo campus for \$1,500
NEXT distance learning module	Kevin Forseth programmed a learning module for Mark and Linda Keane, which is now being	Kevin Forseth, Mark and Linda Keane,	Completed webpage, working c modules, received Graham

	developed into interactive NEXT curriculum	Jennifer Ott	funding, awaiting NEA decision
UW-Baraboo studio to evaluate energy use on that campus	Mike Utzinger and students conducted a studio based at UW-Baraboo.		Shared cost of studio UW-Baraboo very pleased with results
Retail Market Survey and analysis for Layton Blvd West Neighbors	Collect retail market data, conduct a survey of residents and business owners in retail area. Make suggestions for improving retail trade in area	Virginia Carlson, Jordan Parker, Layton Blvd West Neighbors, student in research methods course.	Course completed. Finalizing report.
Culture, Climate, Community Design Impacts on Obesity in Latino Areas	Collaborative proposal to NIEHS for NIH research implementation Obesity and the Built Environment. Study two Milw neighborhood Latino population sample and create three physical interventions in their environment to determine effect on obesity of the built environment – influence integrated approach to future health/environment policies.	Broad collaboration on campus, two nursing centers in community, at least two Hispanic neighborhood groups, other active living organizations, Public Health Service, City of Milwaukee	Proposal submitted Passed first round, waiting for second round. Zhong-ren Peng is taking PI position.
Greendale	Proposal to Robert Wood Johnson granted. CDS will help support James Railey, who will be doing research for study	Sherry Ahrentzen (arch professor), students	Sherry is taking grant to ASU but is sub-contracting with UWM/

Rebecca Klaper, Shaw Assistant Scientist, Great Lakes WATER Institute/Graduate School received \$6,000 to help fund A Graduate Course to Provide Environmental Solutions for the Kinnickinnic River Corridor

The Kinnickinnic River corridor, one of the more neglected watersheds in the Milwaukee area due to its inaccessibility, could be a major resource for the community. However it currently poses an environmental hazard due to significant inputs of toxins from local sources as well as large changes in stream flow due to degraded stream banks and surrounding impervious surfaces which prevent ground absorption of storm water. The CDS funds will be used to develop a graduate level course in collaboration with the Environmental Projects group of the Sixteenth Street Community Health Center that will focus on the combined environmental and societal needs along the Kinnickinnic River. Kinnickinnic River Watershed Issues (BIO SCI 928) will draw graduate students from the Biological Sciences, Geology and Urban Planning departments.

Corliss D. Wood of Partnerships for Education, a Milwaukee Idea Initiative, at the School of Education received \$6,000 CDS assistance in funding the position of Community Outreach Advocate to work for the Community Planning Council (CPC).

The Community Planning Council (CPC) was established to facilitate collective interaction of City, county and state officials, local organizations and stakeholders with neighborhood residents residing within the Neighborhood Strategic Planning Area (NSP) # 10 of the city of Milwaukee in the promotion and preservation of the quality of life in those neighborhoods. The CPC is currently developing an anti-



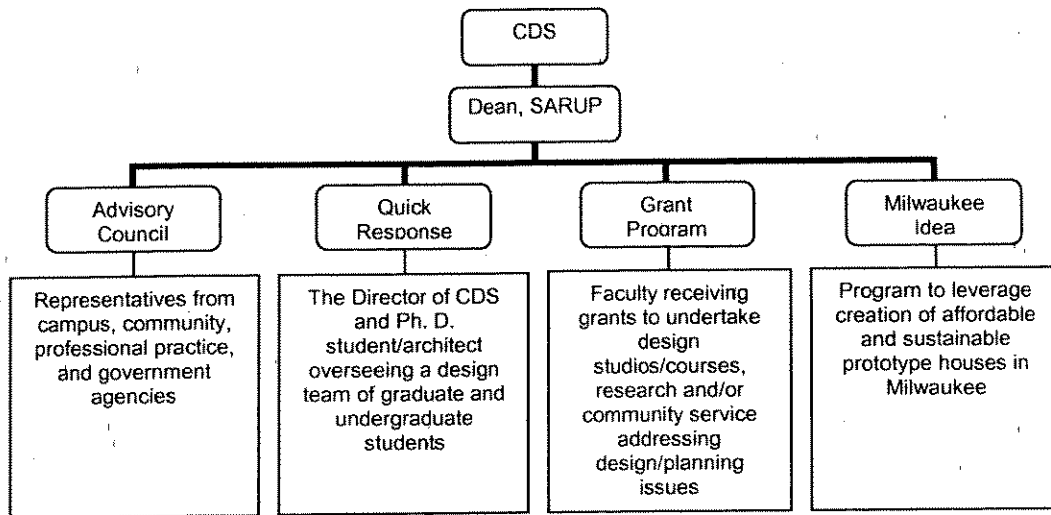
Concretizing "The Milwaukee Idea"

The CDS Story 2000-2004

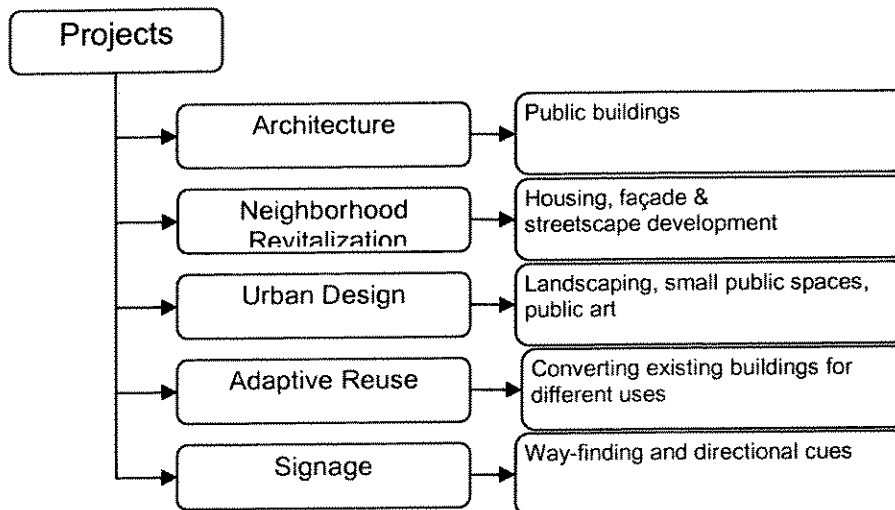
Community Design Solutions (CDS) was born of the University of Wisconsin-Milwaukee's responsiveness to the Milwaukee Idea, which in turn draws its spiritual sustenance from Wisconsin's fin-de-siècle educational philosophy as envisioned by its then state leaders. With their credo, "*The boundaries of the university are the boundaries of the state,*" they eschewed the notion of an ivory-towered university and upheld the Emersonian ideal of scholarship where a state-wide community of literate and educated people worked for the common weal. The Milwaukee Idea helped operationalize and contextualize their universalist mind-set. The initiatives that emerged through it, took the form of a range of outreach programs which enabled UWM's research, scholarship and teaching programs to be harnessed in the service of Milwaukee's community at large. Founded in 2000, CDS became the community outreach and engagement arm of the School of Architecture & Urban Planning (SARUP) at the University of Wisconsin-Milwaukee.

Over the last five years, the scope of CDS' activities have expanded to encompass client groups not only from other academic departments at UWM and the campuses of the University of Wisconsin System, but also from Federal, State and City agencies as well. CDS, in this fashion, has become the channel through which SARUP's considerable design and planning expertise is siphoned out, to help community groups clearly articulate their goals and strategies in relation to the physical environment and envision positive change in the quality of life of the community. As a mostly pro bono service, CDS helps organizations that cannot afford to hire private sector professionals with feasibility studies, preliminary envisioning and a clear design agenda.

Under the guidance of the Dean of SARUP, teams of faculty, staff, alumni, and students work together with community groups in need of design/planning services. These client groups include boards of business improvement districts, neighborhood and non-profit associations, and special-interest groups. Federal, State, and City agencies as well as other academic departments at UWM act both as resources to CDS and its clients and as procurers of CDS expertise. Faced with numerous design issues of varying scale, CDS employs four strategies to provide assistance to clearly delineated design issues in a broader context, as seen in the organizational chart below:

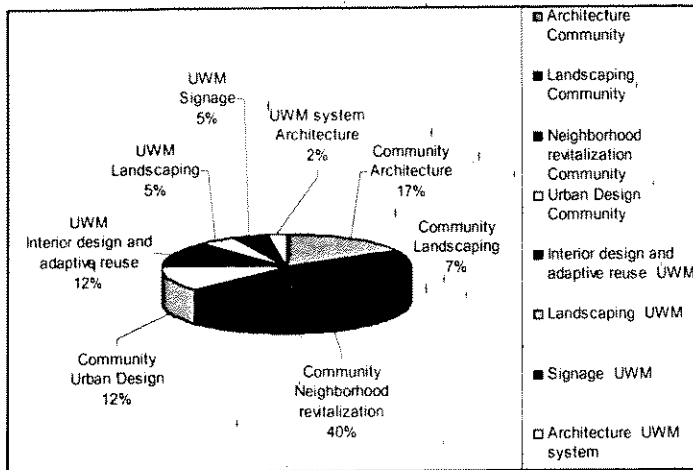


To date Community Design Solutions has worked with over forty diverse client groups, with projects ranging from signage design through neighborhood revitalization to outright architectural interventions. They address a range of needs that include building rehabilitation, urban/open space revitalization, real estate/economic development, safety/accessibility measures, sustainability/energy issues and social/environmental concerns. Students employed by CDS, therefore, gain knowledge and experience in a wide range of human and architectural concerns such as: integrating research into practice; identifying and accommodating disparate voices, needs and ideas into design; team dynamics and the ability to work in interdisciplinary environments, integrating different knowledge domains in the design process, and the impact of professionalism on community empowerment and service in enhancing quality of life. These projects that practically run the gamut of architectural praxis, allows them to gain expertise in diverse professional domains, which serves for job success after graduation.



The following pie-chart gives a breakdown of the projects handled by CDS since inception. As can be seen, the bulk of the projects, over 75% in fact, have involvement

with the City of Milwaukee: The other 25% include projects within the UW University System.



Community Design Solutions' collaborative practice aspires to provide the communities it serves with vision, capability, and empowerment. Although most community organizations have some vision of what they want, the lack of clear goals, strategies, and resources keep them from realizing their dreams. Thus, various CDS teams help community groups clearly define their goals and strategies in relation to the physical environment, and to envision positive change in the quality of life of the community. As a mostly pro bono service, CDS aids organizations that can not afford to hire private sector professionals in setting design parameters, preliminary envisioning and feasibility studies. After receiving these services, the communities are able to raise funds to proceed to the next stage of their project. Because of CDS' large network of collaborators, it can assist communities in working with City or other officials, in order to receive revitalization funds and implementation approvals. CDS' participatory practice helps gather momentum and rally support for various groups which would otherwise be marginalized in the development process. The following account gives a brief overview of the projects that have been completed by CDS since its inception.

Community Projects: Architectural

2000: Milwaukee Public Schools

As one of the Milwaukee Idea projects, the Center for Education Research, Analysis, and Innovation at the School of Education, University of Wisconsin-Milwaukee proposed a program to facilitate the Milwaukee Public Schools Neighborhood Initiative, which was launched in March 2000. This program explains how to create viable schools in outlying areas – which would lose large numbers of current students if and when busing is curtailed, and how to create cost-effective new schools in Milwaukee's inner city neighborhoods. The CDS Quick Response Team proposed design solutions illustrating how the program can be architecturally implemented by retro-fitting existing schools, and by building new schools in a cost-effective manner.

2001: Dormitory Complex For Malcolm X Academy, Center Street, Milwaukee

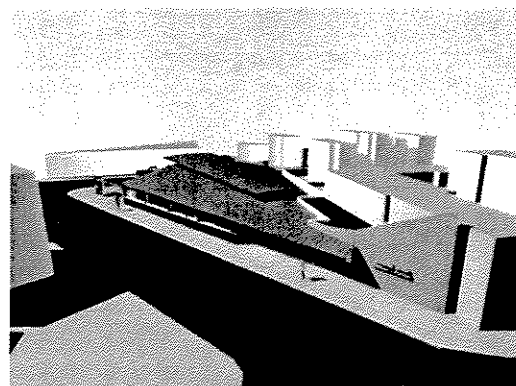
The Malcolm X Academy plans to build a dormitory facility attached to the existing school. By combining the family and educational facets of a child's life, the Academy envisions that students at risk would be able to actively engage in attaining their highest academic, social and physical potential, regardless of income and race. A youth community center and two residence halls for male & female students are planned for the proposed facility, which will



accommodate a total of 600 students. CDS prepared a master plan for the residence halls, along with visuals showing the new image and life the design will bring into the Academy and its surroundings. Nestled in a beautifully landscaped environment, the residence halls were conceived as three-storied two-wing buildings incorporating the historic architectural styles of the surrounding residential neighborhood.

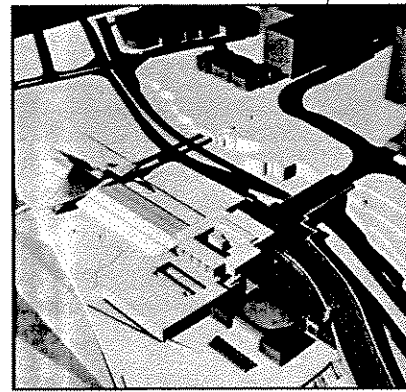
2003: Mitchell Ave Farmers Market

This farmer's market design concept was developed to encourage use of the Mitchell Avenue site and to create a new community gathering location. The overall form is sculptural in nature, acknowledging the unique geometry and terminating condition of the site. The triangular site is filled with twenty-four open-air-stalls for the market, with exterior space provided for local artists and community gathering. Flexibility was achieved by creating open exterior space and collapsible stalls under the roof so that the space could be used in multiple ways. The Mitchell Street façade of the building was made to conform to the historical and 'main street' character of the street.



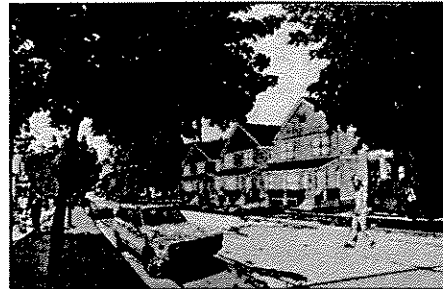
2004: America's Freedom Center

Community Design Solutions (CDS) was commissioned by the Wisconsin Veterans' War Memorial/Milwaukee, Inc., in collaboration with the Wisconsin Department of Veteran Affairs, to materialize a design for a Freedom Center based on the premise that *peace*, and not *war* should be at the heart of a museum that has a reference to "Freedom" in its name. To be located in the parking lot just north of the Calatrava Museum, America's Freedom Center was envisioned as a grand concourse linking Lincoln Memorial Drive to the lake front, with the edge created by the intervention providing culmination and closure to the axial massing of the Milwaukee Art Museum and the War Memorial. The structure, set to cap-off the north end of the Memorial with an orthogonal building, would not only provide a peaceful aesthetic; but also offer the added functionality of a much-needed passage for pedestrians from the city level to the lakeside.



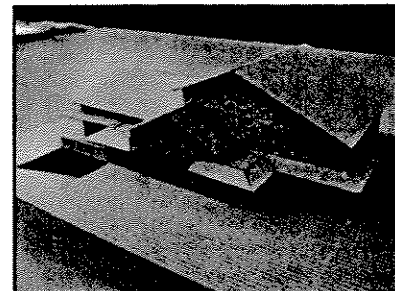
2004: Milwaukee Economic Development Corporation

CDS was asked to provide a proposal for infill housing in the area between 2nd and 5th Streets to Center and Locust Avenues. Perspective renderings and alternative residential layouts for three specific locations were provided by the CDS.



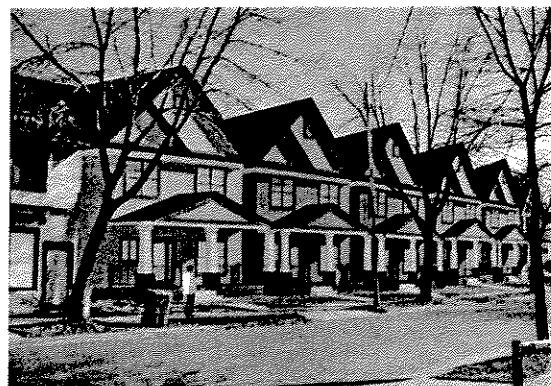
2004: Westowne Neighbors

The Westowne Neighbors project involved the design of a two-unit residential facility for two elderly occupants and their caregiver. CDS produced architectural drawings and study models, along with photorealistic images of the proposed interiors.



2004: Riverworks

CDS was commissioned to conceptualize residential streetscapes for vacant lots long Keefe.



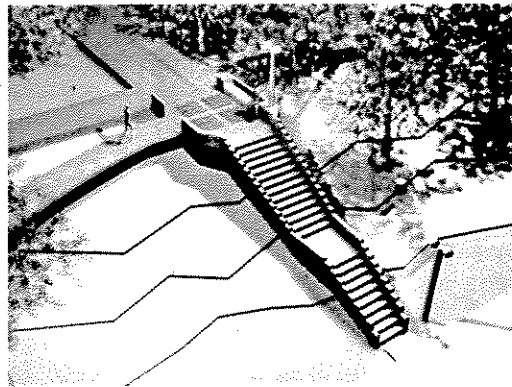
Community Projects: Landscaping

2001: Willard Community Park

The residents of the Willard Community commissioned CDS to help develop a community park for their small town, on a three-acre parcel of land at the corner of Dove Road and Highway G in Clark County. A drive-through road divided the park into two distinct areas – a wildflower-filled woodland zone and a manicured garden zone. The required amenities included a gazebo, ice-rink, warming shelter, restrooms, trail, benches, children's play area, lighting, signs, and landscaping. CDS collaborated closely with the National Park Services consultants in preparing a schematic design for the park.

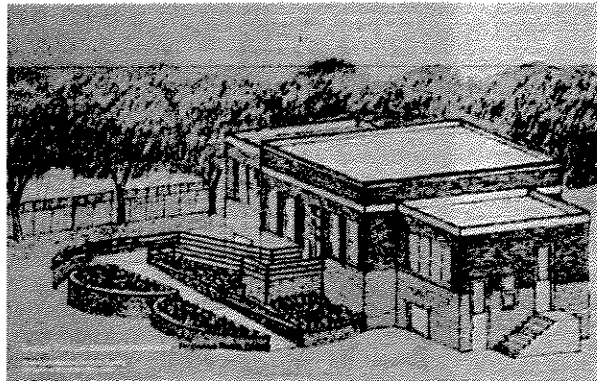
2003: Stairway Design Project, Riverwest Park

CDS helped the Urban Ecology Center of Milwaukee envision the construction of a stairway linking the riverwalk to the Riverwest Park, located west of Oakland Avenue and south of Geneva Avenue.



2003: Enderis Park

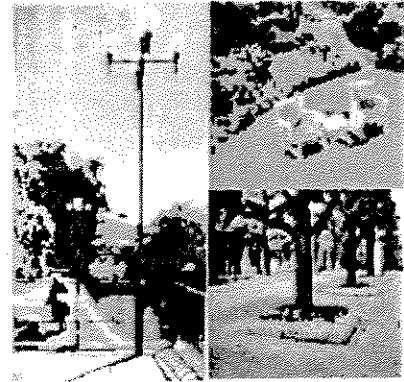
The Enderis Park Residents' Association initiated a program of revitalization for their neighborhood park. Improvements included the addition of an accessibility ramp to the community center, the conversion of the existing parking lot into tennis courts, the installation of a fountain for the wading pool, and the addition of some art works to the park. The ramp design was completed by the City of Milwaukee, and CDS was asked to prepare the relevant presentation drawings in order to get funding and residents approval for the proposed project.



Community Projects: Neighborhood Revitalization

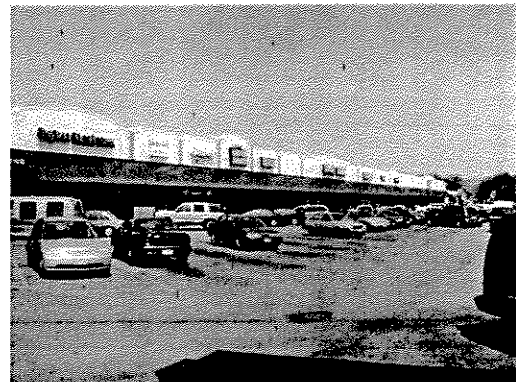
2000: Maryland Plan

The "Maryland Plan" was the result of collaboration between UWM, the City of Milwaukee, and a neighborhood group to address the problem of physical deterioration of the UWM neighborhood. CDS conducted a neighborhood survey and prepared an inventory of streetscapes and property conditions over summer of 2000. Based on their findings, CDS made design recommendations to improve the quality of the UWM neighborhood, which included improvements to street landscaping, lighting and parking, and the maintenance of private properties.



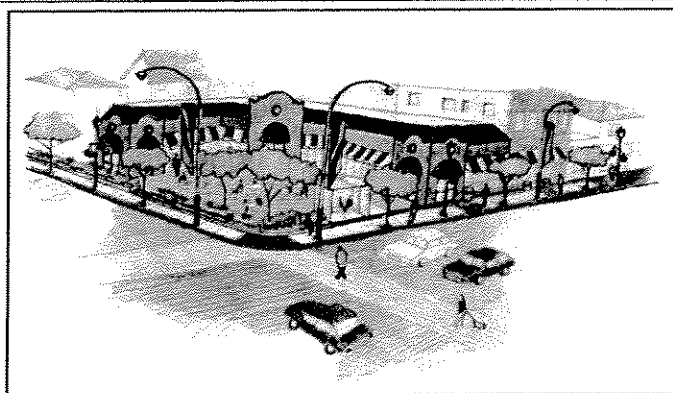
2000: Revitalization of Michelle Park Plaza

The Layton Blvd West Neighborhood is a culturally diverse community bounded by the Menomonee Valley, 43rd Street, Lincoln Avenue, and the South Layton Blvd in the west side Milwaukee. In order to improve the quality of life & the physical environment of the neighborhood, and to strengthen the economic base in the area, the neighborhood association decided to revitalize their commercial hub – the Michelle Park Plaza – with an improvement to the strip mall and its environs. The design guidelines consisted of a proposal to replace the existing canopy with a glazed-roof colonnade and providing signage control, new paving, street lighting, colorful banners, landscaping and a fence around the parking area.



2000: Revitalization of the "University Square," North Oakland Avenue

The North Oakland Avenue "University Square" commercial district, located in eastside Milwaukee, spans a two block swath of land between East Linwood Ave and East Newberry Blvd. CDS provided design guidelines for façade improvements, which included recommendations for gable designs, building heights, window sizes, ornamentation, awning, and signage. Streetscape improvement proposals included recommendations



for landscaping, street furniture, lighting, banners, paving, fences and parking. A visually unattractive parking lot located at the busy intersection of Oakland and Locust Avenue was

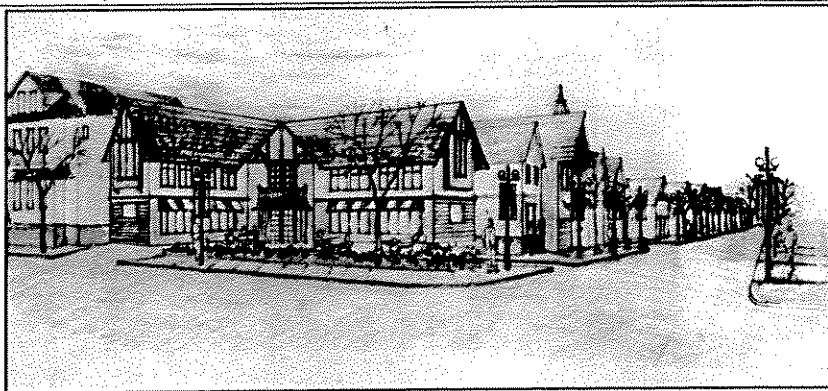
transformed into a small plaza, providing a much-needed gathering place by bringing together the four segments of the area divided by the two streets.

2001: Silver Spring Drive Revitalization

Silver Springs Boulevard is a busy east-west automobile corridor in the Milwaukee Metropolitan area. Over time local businesses, by catering mainly to the automobile customer, had pushed parking to the street and drawn storefronts away from the boulevard. This has resulted in the deterioration of the pedestrian quality of the street, and the area was being perceived only as an automobile thoroughfare between destinations. CDS created a master plan of the area detailing specific architectural interventions to improve the pedestrian quality of the street and increase the sense of place in the area between 60th and 65th street. The final revitalization plan contains general landscaping suggestions for the area; street fixtures including benches, trash receptacles, decorative lighting, and pedestrian scale street lamps; roadway improvements consisting of brick paving and pedestrian crossings, which would enhance important intersections for both pedestrians and automobile travelers; and finally, a series of façade studies of each of the commercial buildings along the five-block stretch of Silver Springs.

2001: Revitalization Of Walnut Way Conservation Cluster

The Walnut Way Conservation District in west Milwaukee consists of 17 blocks, bounded by Fond du Lac, North 20th Street, North Avenue, Walnut Street, and 12th Street. The intended development program includes the preservation of historically significant properties, the renovation



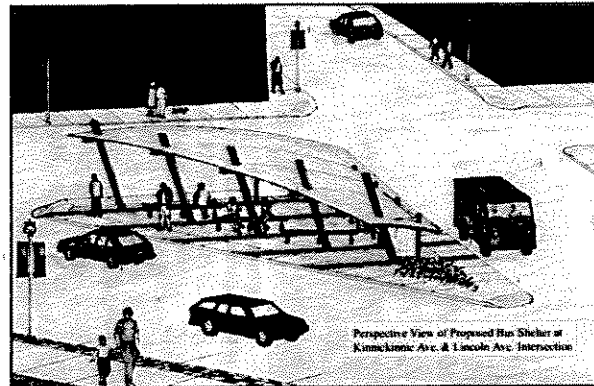
of other properties, new construction on vacant lots, streetscape improvement, and growing economic enterprises. As a pilot project, CDS made design recommendations for the 1700 block in the cluster. A property inventory was conducted recording the existing condition of buildings, yards, and the streetscape, while identifying areas where the maintenance or demolition of buildings was required. Proposals for streetscape revitalization included improving landscaping, introducing street furniture and new street lighting, sidewalk maintenance, and a design for a new community center. It is intended that the recommendations will generate a unique and coherent identity to the Walnut Way Cluster.

2001: West Burleigh Street Development

The West Burleigh Street Business Development Corporation wished to improve commercial properties and the streetscape of a section of West Burleigh Street, located between 43rd and 60th Streets. Building on an earlier proposal for the area by the Planning and Design Institute, Inc., Milwaukee, CDS proposed dividing the streetscape into five segments based on existing land use patterns: the two boulevard segments at the east and west ends of the Burleigh Street act as gateways to the middle area, which functions as a main street containing a commercial segment, a civic segment, and an institutional segment. CDS provided design guidelines for streetscape and façade improvements, based on the above themes and the City of Milwaukee's façade improvement guidelines. Proposals included recommendations for gable designs, building heights, window sizes, ornamentation, awning, façade cleaning, fencing, building repair, and signage.

2001: Kinnickinnic Avenue Façade and Streetscape Revitalization

The Bay View Business Association wished to develop commercial and streetscape improvement programs for Kinnickinnic Avenue. CDS selected two city blocks along Kinnickinnic Avenue between East Potter Avenue and East Russell Avenue as a model project, and proposed design recommendations for façade improvements and streetscape revitalization. In addition, a design proposal was developed for a new bus shelter at the intersection of Kinnickinnic Avenue, Lincoln Avenue, and South Howell Avenue. This design would serve three main bus lines and would be the central attraction for the surrounding commercial area. CDS also proposed streetscape, landscaping, street lighting, and traffic control improvements for this intersection.

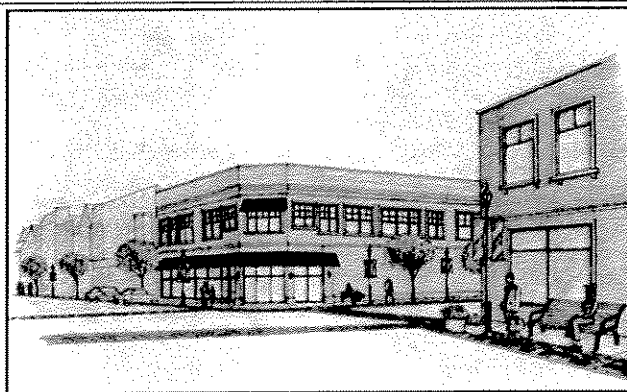


2001: West National Avenue Streetscape Revitalization

The Layton Boulevard West Neighbors Community Organization proposed a business improvement program for West National Avenue, which includes improvements to the streetscape between 27th and 60th Streets in the City of Milwaukee. An observation study of comparable revitalized commercial districts was done along North Oakland Avenue in Shorewood, State Street in Madison, and Oak Park in Chicago, and CDS proposed design guidelines based on this study for streetscape improvement, comprising of recommendations for landscaping, street furniture, lighting, banners, paving, fences and parking. This proposal seeks to return a livable, humane character to the area and includes a suggestion to develop two existing small open areas as small parks with landscaping and seats, which would serve as anchors for the entire business district.

2002: West North Avenue Commercial Revitalization

The North Avenue Community Development Corporation (NACDC) intended revitalizing its commercial sector — North Avenue between the 32nd and 40th Streets in Milwaukee. CDS developed a set of design recommendations for the improvement of the commercial properties and the streetscape. Design guidelines included proposals for façade improvement for selected commercial properties and recommendations for architectural designs for infill constructions on vacant properties. Streetscape improvement proposals included soft & hard landscaping, street lighting, banners, street furniture, and signage control.



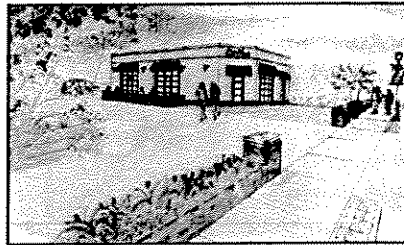
2002: Metcalfe Park Neighborhood Revitalization

Metcalfe Park Residents Association was developing plans to revitalize a 40-block residential neighborhood (bounded by North Avenue to the South, Center Street to the North, and between

27th and 38th Streets) in order to improve the quality of life and the public perception of the area. CDS made recommendations for the general physical and visual improvement to the properties and streetscapes of the area, and selected two blocks, bounded by 33rd, 35th, Center, and Meineke Streets, as a pilot project. Each property in the pilot area was reviewed and CDS made recommendations on front yards and streetscapes, façade improvements, new fencing, street lighting, and new house unit construction on vacant properties.

2002: Midtown Façade Improvement Program

The Department of City Development City of Milwaukee decided to implement commercial revitalization program in the Milwaukee, in the commercial node intersection of three major roads – Fond Capitol Drive, and 51st Street. DCD

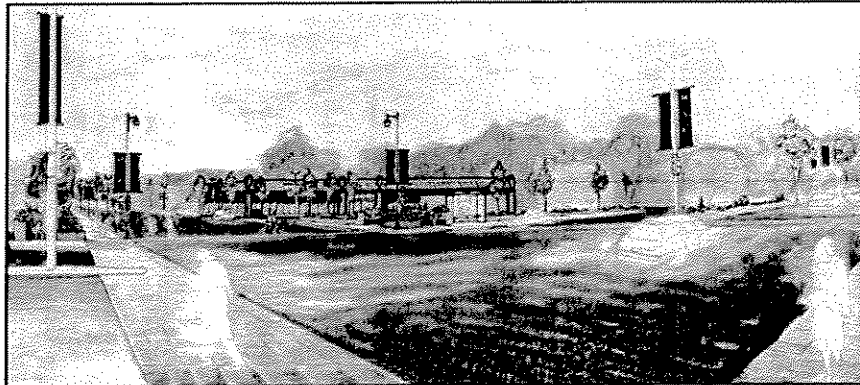


(DCD) in the a major Midtown area in located at the du Lac Ave., commissioned would improve properties and

the appearance of the commercial the visual quality of the area in general. As a pilot project, DCD selected 15 properties that required façade improvements and CDS presented design interventions for the selected properties, which included recommendations for shop-front window changes, façade cleaning, signage control, improved lighting, awnings, ornamentations, and changes for building heights and gable designs. CDS also developed a design proposal for the adaptive re-use of a vacant gas station as a coffee shop, which highlighted some of the original characteristics of the building and added landscape elements.

2002: Martin Luther King Drive Revitalization

The King Drive Business Improvement District was interested in implementing a major commercial revitalization program on Martin Luther King Drive, in the area between the intersections of North Avenue and Locust Avenue. CDS was



commissioned to provide design recommendations to improve the visual appearance of this area. CDS developed a design proposal that included detailed block-by-block recommendations for streetscape design and façade improvements in this area, as well as recommendations on new infill constructions and parking lots.

2002: Vliet Street Commercial Revitalization

The Washington Park Neighborhood Association was interested in improving the façades of selected commercial properties on Vliet Street, in order to enhance the visual quality of the neighborhood. CDS was commissioned to provide design recommendations for façade improvements.



2002: Greenfield Avenue Revitalization

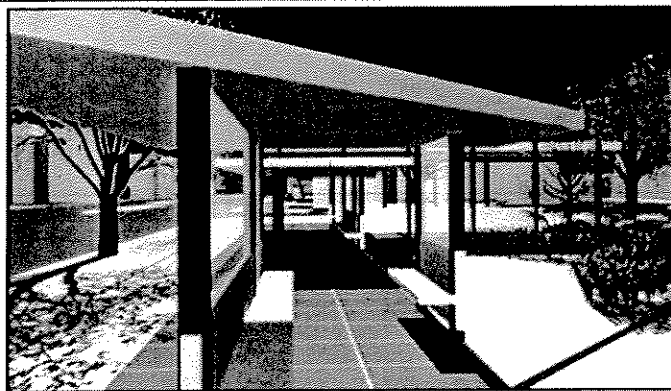
The Southside Community Organization envisioned bringing improved visual quality and order back to the segment of Greenfield Ave in Milwaukee between 5th and 10th streets. As a pilot project, CDS developed streetscape and façade improvement design recommendations for the segment of Greenfield Ave between 5th and 6th streets. Proposals for streetscape improvement included new paving for sidewalks and crosswalks, improved lighting, and adding banners and street furniture. Recommendations for façade improvements were kept to a minimum and design recommendations were limited to building repair, adding awnings, and signage control.

2003: Greenfield Avenue Façade Improvement and Streetscaping

The proposed Greenfield Avenue streetscape improvement extends from 20th street to 27th street. The design sets out to enhance a pedestrian-friendly environment by: clearly defining pedestrian space; improving landscaping and the visual order in the area; improving safety and security by upgrading lighting and providing other pedestrian amenities. The improved streetscape will create an enhanced pedestrian environment, which links the religious and public buildings, proposed farmers' market, and commercial and residential properties.

2004: Atkinson-Capitol-Teutonia

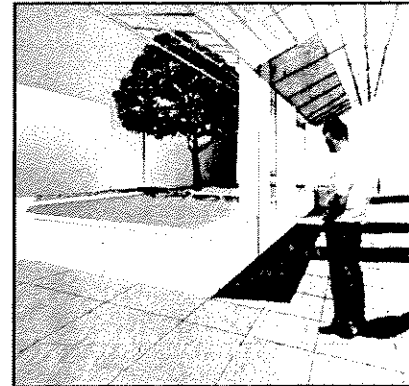
CDS was commissioned to provide recommendations for the revitalization of the Atkinson-Capitol-Teutonia Triangle through landscape and streetscape improvements, a bus shelter design, parking solutions and façade suggestions. The design proposal included a 3D computer model, perspectives and a site plan.



Community Projects: Urban Design

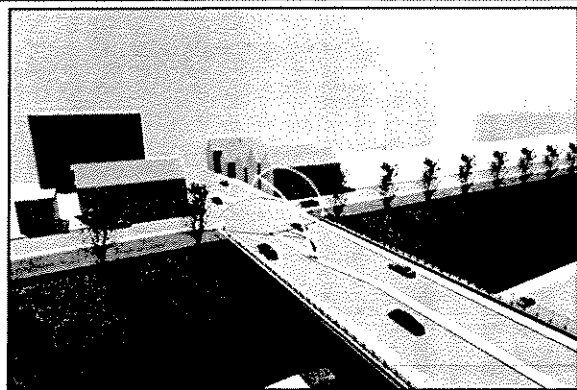
2003: Greenfield Avenue Small Public Park and Bus Shelter

A participatory approach was adopted in designing a small public space for the Greenfield Avenue Community, which was spearheaded by Milwaukee Alliance as part of their effort to revitalize the residential and commercial life of the neighborhood. The design intervention was for a vacant street corner lot, and consisted of the introduction of a bus shelter and a small park that would define the entry to the neighborhood. Deriving inspiration from nearby church buildings and the name of the community (Greenfield), a raised grassy terrace was designed in order to highlight the existing tree with a seating corner placed around it. A white concrete portal strikingly frames this green setting, and symbolically depicts 'a window to a greener future of the community.'



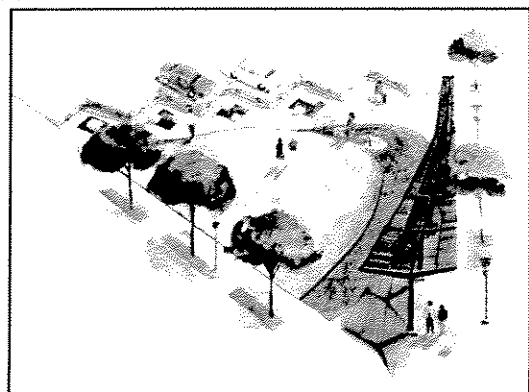
2003: Lincoln Village Gateway Arch

The Lincoln Village Business Association (LVBA) was engaged in creating a stronger sense of community and visual identity in their neighborhood, while highlighting their rich cultural heritage. Drawing inspiration from the unique architectural heritage of the community, the Lincoln Village Gateway Arch takes on the abstract form of gable designs of the historic buildings in the area. Placed strategically across the Lincoln Avenue to be seen from the freeway that runs under the street, it is intended to provide the community with a distinctive identity.

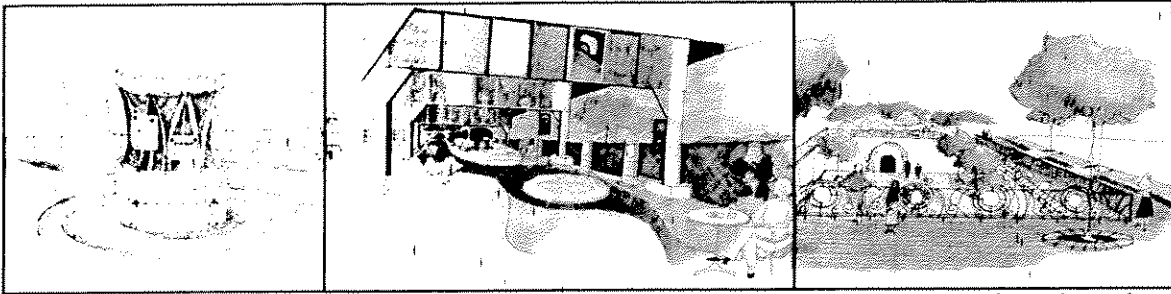


2003: Lincoln Village Public Plaza

Another project given to CDS by the Lincoln Village Business Association (LVBA) was the revitalization of a small triangular site at the intersection of Lincoln and Windlake Avenues. A public plaza was proposed for this area as a landmark for the neighborhood and to promote social interaction. The scheme consisted of a square with a wide walkway, patterned and paved in brick and stained concrete trimming the grass-covered landscaped area. Seating areas are provided by concrete blocks placed in small pebbled courts. A wooden structure screens the busy commercial street from the plaza while continuing the urban edge of the street and providing shade to the pedestrians and bus commuters.



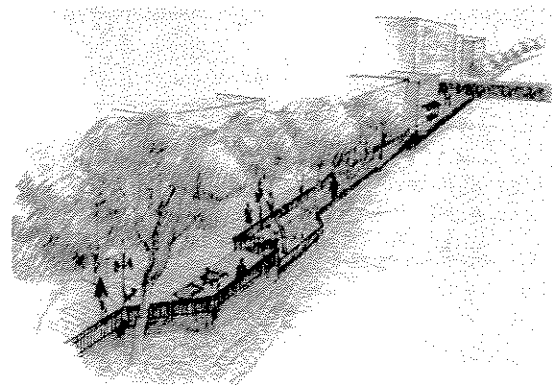
2003: Silver City Revitalization



The Layton Blvd West Neighbors (LBWN) in Milwaukee, a community group whose intention was to revive the residential and commercial life of their neighborhood, planned to improve the visual quality of the streetscape along National Avenue – the major commercial spine of the area. National Avenue was originally an Indian trail, later used widely for streetcars, and research into the history of the area revealed that it was called ‘Silver City’, a reference to the silver dollars that the early settlers who worked in the nearby factories would spend in the area’s many saloons on paydays. Deriving inspiration from this rich history, LBWN decided to revive the name ‘Silver City’ and relate the story of its past through the design of the streetscape. Design ideas proposed included incorporating ‘silver’ plaques in brick-paved squares as ‘story boards’ at specific locations along the sidewalk and ‘silver’ rail tracks to demarcate these ‘storyboard’, to provide visual cues to the area’s history. The proposed design of a small ‘Conversation Park’ at the intersection of National and Shea Avenues included an information kiosk with a ‘time capsule’. An unused pedestrian tunnel would be reopened, with a landscaped sunken court in front acting as a gathering place for community events. Some underutilized open spaces and parking lots under the 35th Street viaduct would be completely redesigned to create an integrated community gathering place, and the space right under the viaduct would be paved, decorated with public arts, and transformed into a vibrant esplanade with seating and small cafés/food vendors. The spaces on either side of this esplanade would be redesigned to house a children’s park, a small soccer field, tennis and volley ball courts, and a dog park.

2004: Revitalizing West Bend Riverfront Parkway Downtown Marketplace

As part of the downtown revitalization, the City of West Bend in Wisconsin envisioned redesigning the existing pedestrian walkway along the Milwaukee River, in order to capitalize on the commercial potential afforded by the riverfront. Infusing an urban ambience to the riverwalk, the design was conceived as a series of ‘squares’, with contrasting scales and characters, orchestrated along a meandering walkway. The rear facades of the commercial properties abutting the river were redesigned to connect with new spaces created along the riverfront. A main design concern was the need to make the

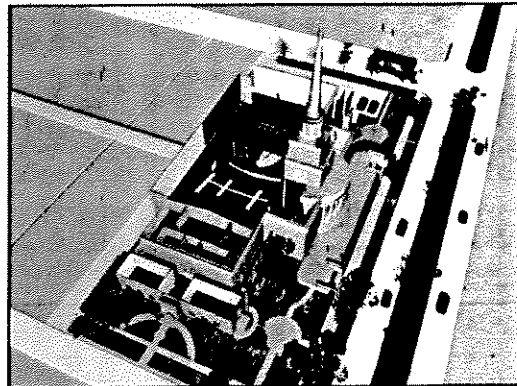


riverwalk and the commercial edge of the downtown visible from the proposed developments on the east side of the river. Furthermore, the downtown marketplace-riverwalk needed to be connected with its northern segment by an underpass and/or a pedestrian crossing over Washington Street/ Highway 33.

On-Campus Projects: Interior Designs and Adaptive Reuse

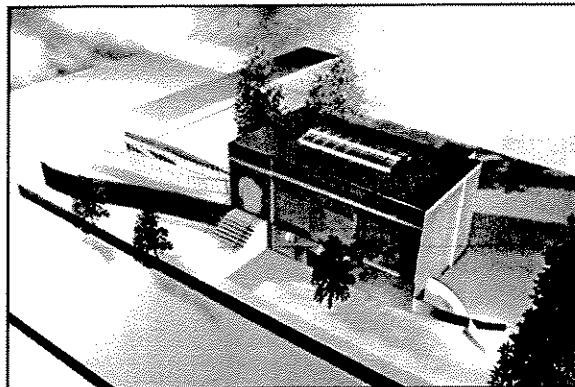
2000: Christian Science Church

Fourth Church of Christ, Scientist is a large Georgian Revival building, with a spired central tower incorporating a church auditorium that is flanked by lower wings to the east and west. The only building in Milwaukee designed by nationally known Chicago architect, Charles Draper Faulkner, it is one of the city's finest interpretations of the Neo-Georgian style. In adapting the building as a Dance Theater, the proposal makes minimum interventions to the structure. The church auditorium houses both the stage and the auditorium, and the only significant change is the conversion of the east and west courtyards into a reception lounge cum stage manager's room and a back stage respectively. The existing basement is adapted to accommodate the off-stage supportive facilities.



2000: Greene Museum

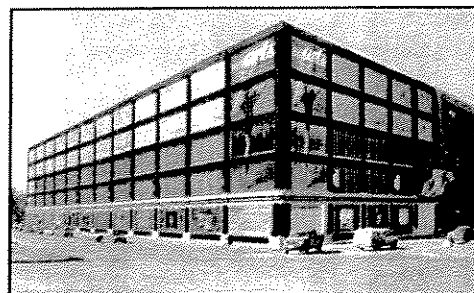
Greene Museum was acquired in the Milwaukee Downer College campus purchase. It was named for Thomas Arnold Greene (1827-1894), a Milwaukee druggist and collector of plants, minerals, and fossils, whose children, Mrs. Horace A.J. Upham and Col. Howard Greene, presented their father's collection of 75,000 to 100,000 specimens to Milwaukee-Downer College in 1911. Two years later the museum was built to house the collection, and in 1964 UWM purchased the collection for \$20,000. In 1992, the Department of Geological Sciences was



relocated to the new Lapham Hall Science Center addition, and the collection was installed in that facility in a modern display and research space. In order to bring new life into the museum building, some refurbishments were proposed, which included a new entrance with a curving, fully accessible ramp that celebrates a perfect marriage of the historic style with a more dynamic contemporary trend in architecture. This ramp was designed by Architect Philip Johnson, a pioneer of the Modern Movement of Architecture, and Community Design Solutions Initiative actualized his concept with drawings and images.

2000: Kenilworth Building

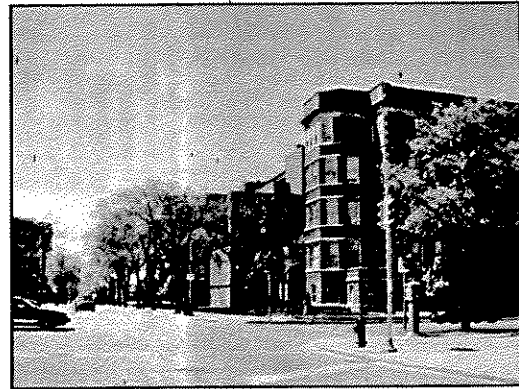
Kenilworth Building, is a property belonging to the UWM, located south of North Avenue, with frontages along Kenilworth and Farwell. At present, it is used as a storage facility, and CDS was commissioned to provide



renderings showing the facade improvements done to the building.

2002: Columbia Hospital

CDS was requested by the Campus Planning Community to provide an initial proposal to adapt the Columbia Hospital Premises for UWM's space needs. The spatial requirements included dormitory spaces for undergraduates and graduates, classroom/office spaces for some departments, relocation of all the student services (bursar office, enrollment office, etc), Norris Health Center and the UWM Outreach Center. All student services were located on the ground floor, while the 1-3rd floors were used for classrooms. The upper floors were set aside for graduate student dormitories, and a new tower was proposed over the present nurses' quarters for undergraduate dormitories and linked to Sandburg Halls by a sky bridge. The main corridor on the ground floor was proposed as a "spine" that articulates these services, and renamed Panther Avenue. The existing parking garage would retain its former function.



2003: Alumni Fireside Lounge, UWM Union

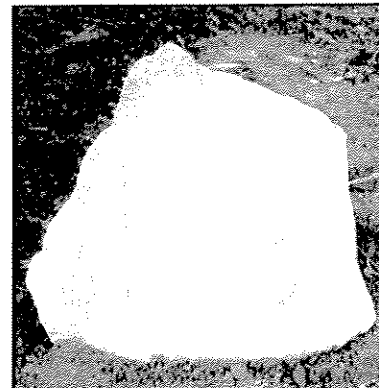
CDS was requested by the UWM Alumni Association to present a design solution for the refurbishment of the interior of the Alumni Fireside Lounge in the UWM union. The design proposal, which was approved by the Alumni Association, included changes to flooring, ceiling, lighting, wall colors, and a design for displaying the photographs of distinguished alumni (a wall of fame).



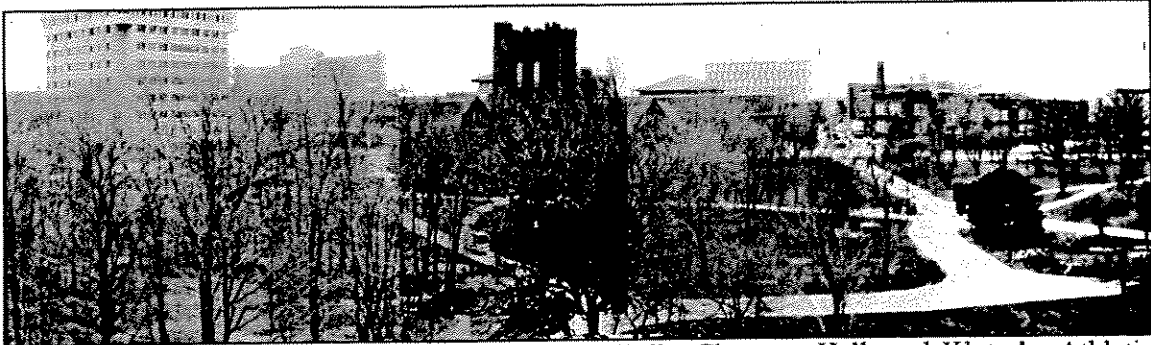
On-Campus Projects: Landscaping

2001: Plaque For The Vietnam Veterans Tree

In May 1971, a group of UWM students who had served in Vietnam planted a tree in the campus of the University of Wisconsin-Milwaukee, as a tribute to the victims of the war in Indochina. In the spring of 2001, thirty years later, the Milwaukee Veterans Community decided to rededicate the memorial in a spirit of peace, unity, and healing. The CDS Quick Response Team prepared the design for a memorial plaque that was to be constructed out of stainless steel and affixed to a dressed granite boulder placed near the memorial tree. A dedication statement is etched into the plaque along with a line drawing of the map of Vietnam.



2002: Chapman Court



The garden surrounding the Sandburg Residence Halls, Chapman Hall, and Klotsche Athletic Center at UWM is presently a thick grove of trees with a network of concrete-paved pathways which does not provide adequate space or facilities for recreational purposes. In order to redevelop this area as a restorative landscape for students, CDS developed three design options. The first, an “informal” design, incorporated a large open lawn and minimal landscaping, while the second was a “formal” design with a tree-lined avenue, fountains, open spaces, and trails. The third and final design was a more “lively” option, with a triangular plaza, a reflecting pond, sculptures, and trails. The common objectives underlie all three design ideas are: assigning a sense of significance to Chapman Hall (Chancellor’s Office); providing a large open lawn for students to interact by removing a part of the grove; minimizing and regulating the path network; adding seating, lighting, and safety devices such as emergency phones and security cameras and designing a trail network connecting the Downer Woods with the campus.

On-Campus Projects: Signage

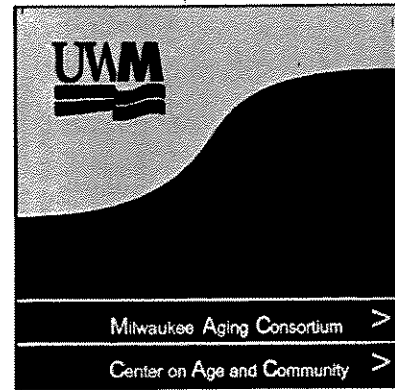
2000: Golda Meier Library

The users and the staff of Golda Meier Library, UWM had been experiencing way-finding difficulties and disorientation within the building due to the inadequacy, poor graphic quality, and improper location of its signage system. As an immediate and temporary solution, GML decided to improve the signage in the entrance halls of both West and East Wings of the building. After a preliminary observation of user behavior and an analysis of the signage system, CDS identified key problems, and recommended cost-effective and less extensive changes. Guidelines included the realignment and relocation of the existing signage and introduction of a few new signages.



2002: Aging and Community Center

The Aging and Community Center, a part of the Milwaukee Idea initiative, is located in the College of Nursing at UWM. The Center needed a way-finding system to help its visitors navigate through the meandering corridors in the Cunningham Hall. CDS designed these temporary signs (based on a new signage systems that had been pilot tested at Sabin Hall) and located them at strategic positions within the complex.



UW-System Projects: Architectural

2004: UW-Oshkosh Outreach Center

CDS produced a schematic design for an Outreach Center at UW-Oshkosh. This Center would house the university administrative, educational, marketing, program development and community services functions, along with the Chamber of Commerce.

