

N.W. 1/4 SEC. 21, T. 7N., R. 22E.

354

MILWAUKEE RIVER

EST. DOCK LINE

668.77

LANDS

(CITY OF MILWAUKEE)

TAX KEY NO. 354-0901-000

TAX KEY NO. 354-0907-000

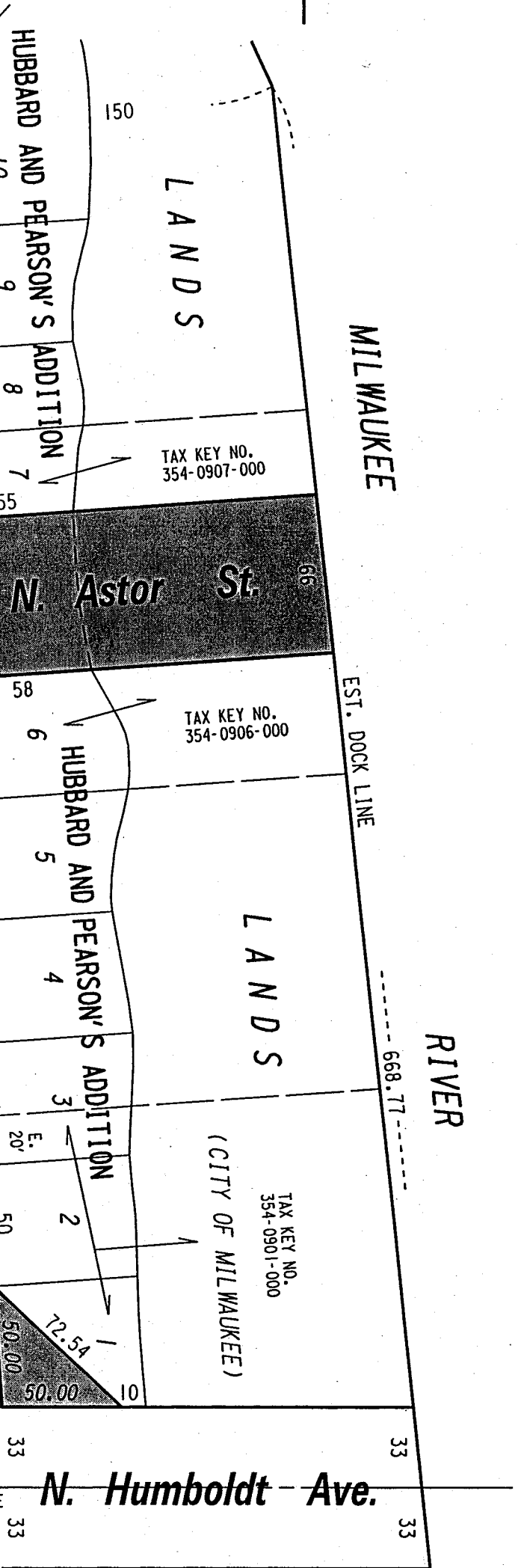
TAX KEY NO. 354-0906-000

N. Humboldt - Ave.

1/4 SEC. LINE

St.

S.E. CORNER OF WATER LOT 1 AS ORIGINALLY PLATTED



PORTIONS OF PUBLIC STREETS PROPOSED TO BE VACATED

N. Water

(66' R.O.W.)

EXHIBIT "A"  
FILE NO. 020158  
INFRASTRUCTURE SERVICES DIVISION  
MILWAUKEE, WISCONSIN

ASSIGNED TO: W.E. FUCHS  
DRAWN BY: W.E.F.  
PROJECT/GRANT NO.: WK52337156  
APPROVED BY:  
CH'K'D. BY: M.C. WILLIAMS  
DATE: MAY 8, 2002  
SCALE: 1" = 60'

Maxine Lindholm  
CENTRAL DRAFTING & RECORDS MANAGER

City Engineer