

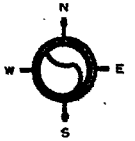
SW 08-7-22

ATLAS P. 283

283

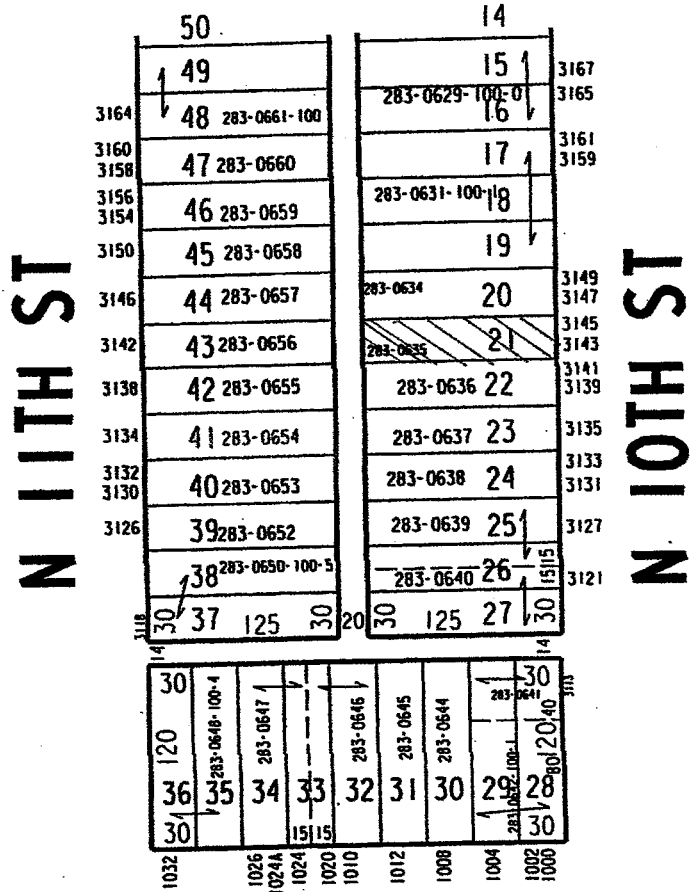
283-24

SCALE 1"=80'



MILW. SAV. & INVEST.
ASS'N. SUBD. NO. 2

PAGE 283-25 ADJ.

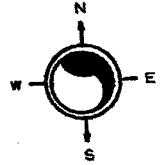


W BURLEIGH ST

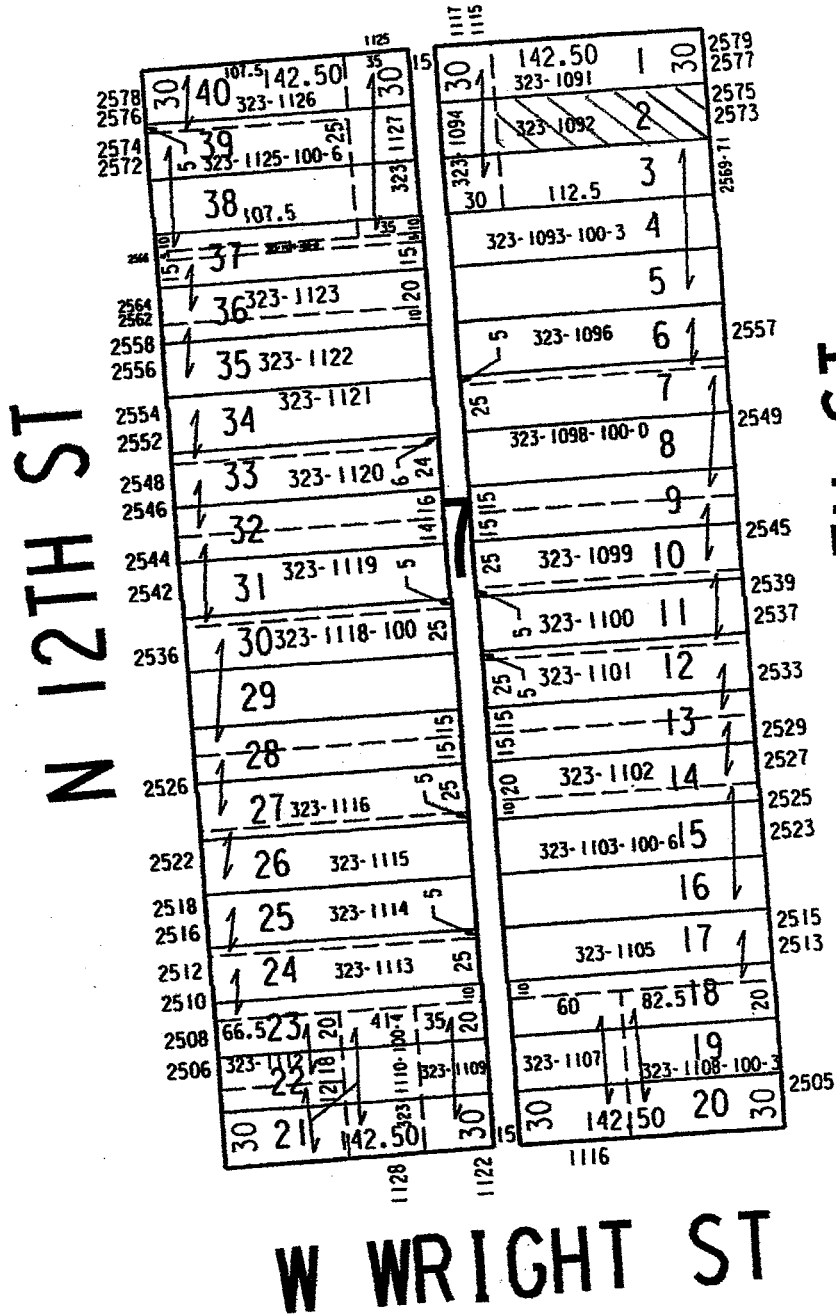
SW 17-7-22
ATLAS P. 323

323

323-31
SCALE 1" = 80'



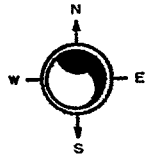
SUBDIVISION OF PART
OF W. 60.50 ACRES
W CLARKE ST



NW 17-7-22
ATLAS P. 312

312

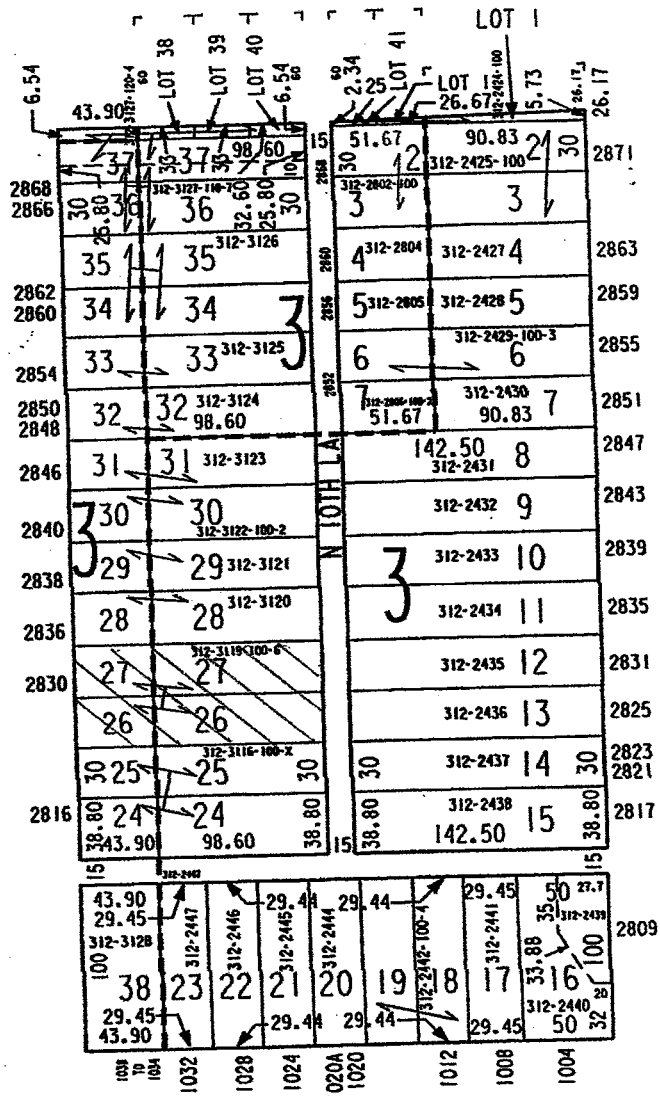
312-25
SCALE 1"=80'



SCHOKNECHT'S
LANDS SUBDIVISION
W LOCUST ST

F. SUELFLOW'S SUBDIVISION

N 11TH ST



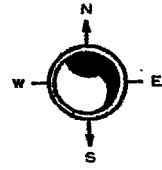
N 10TH ST
LUEDTKE'S SUBDIVISION

W HADLEY ST

SW 07-7-22
ATLAS P. 285

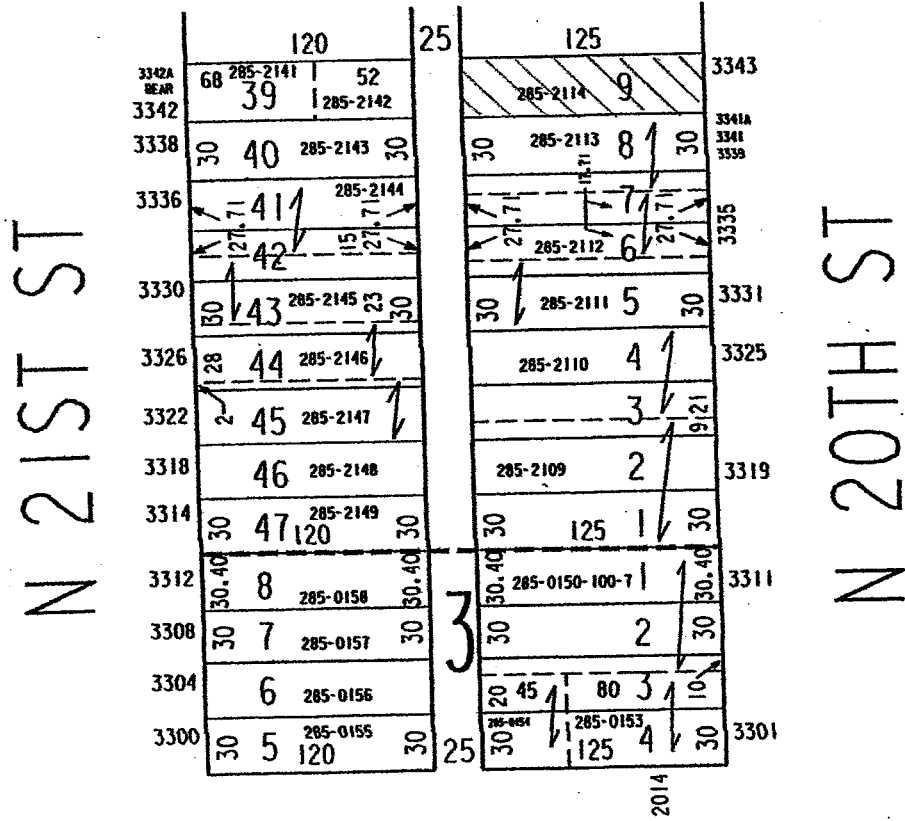
285

285-03
SCALE 1" = 80'



WECHSELBERG'S SUBDIVISION

PAGE 285-02 ADJ.



W CONCORDIA AV
BECKER'S SUBDIVISION

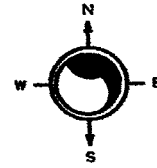
SW 07-7-22

ATLAS P. 285

285

285-33

SCALE 1" = 80'



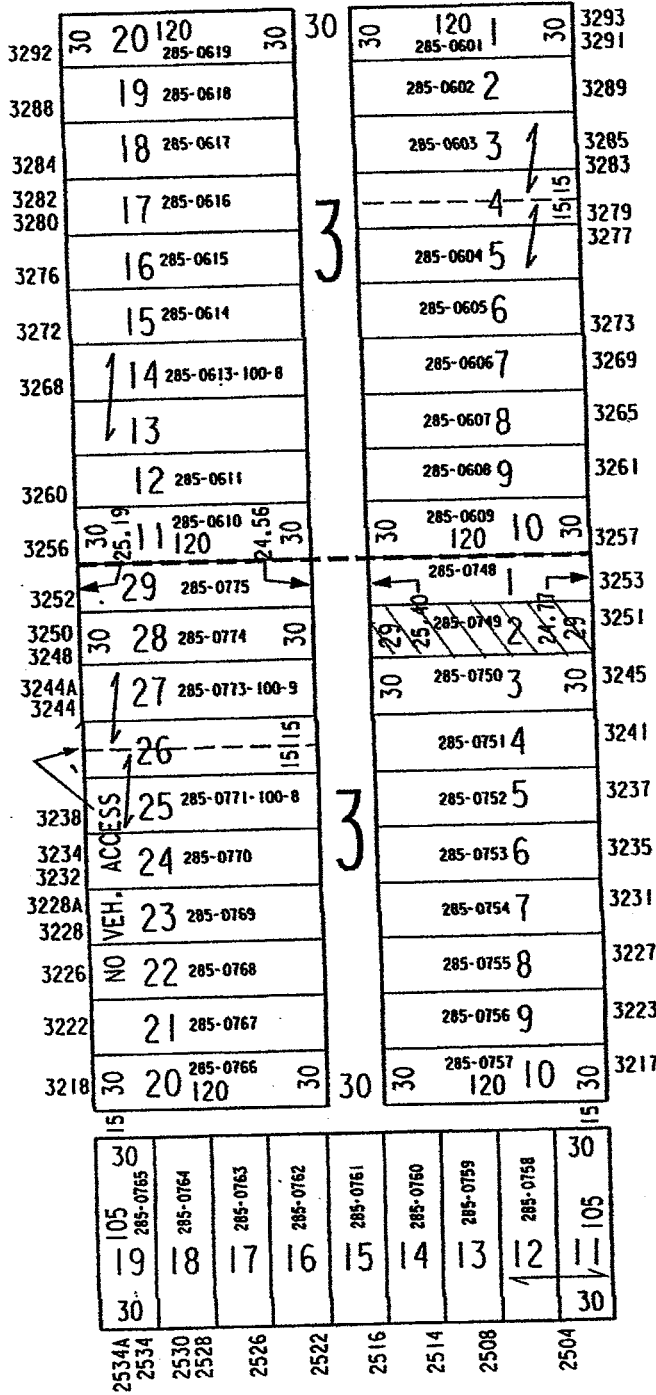
W CONCORDIA AV

N 26TH ST

N 25TH ST

CONTINUATION OF
CONCORDIA HEIGHTS

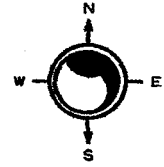
GRAND VIEW



W AUER AV

01-09-96

ASSESSOR'S OFFICE
CITY OF MILWAUKEE



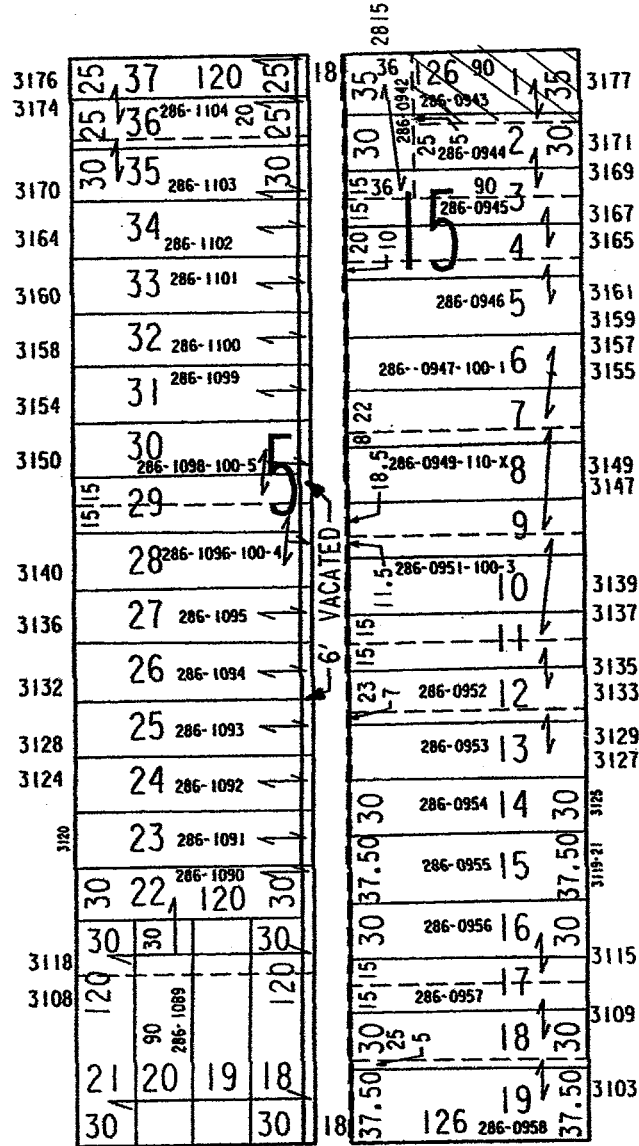
W AUER AV

WARNER BROS. AND WAMBOLD'S
SUBDIVISION NO. 2

N 29TH ST

N 28TH ST

SECOND CONTINUATION OF GRAND VIEW



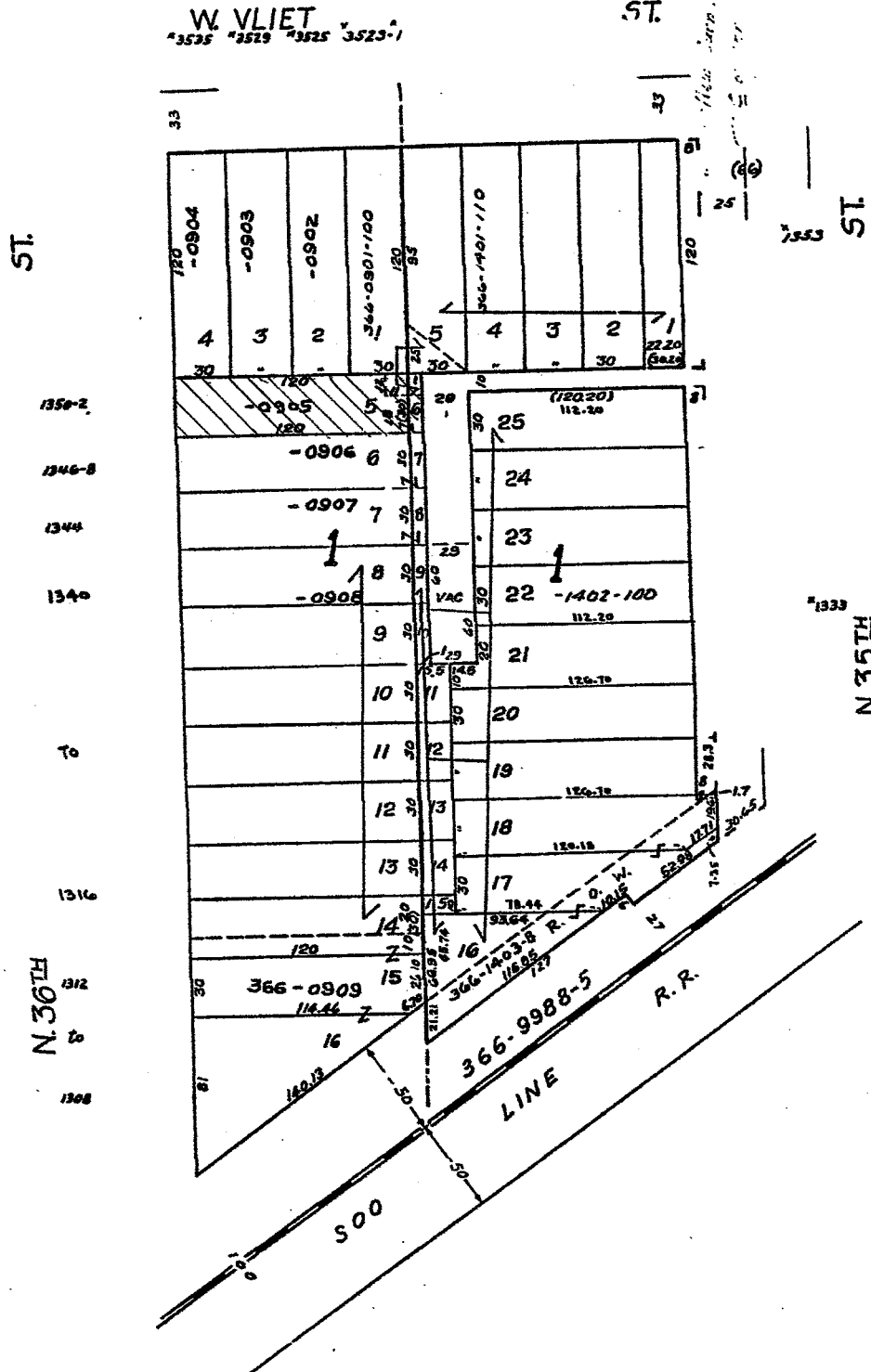
W BURLEIGH ST

S.W. 24-7-21
ATLAS R 366
NOYES-FULLER'S SUBD. #1

366

RICHTER'S ADD.

366-05

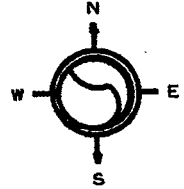


9-15-86

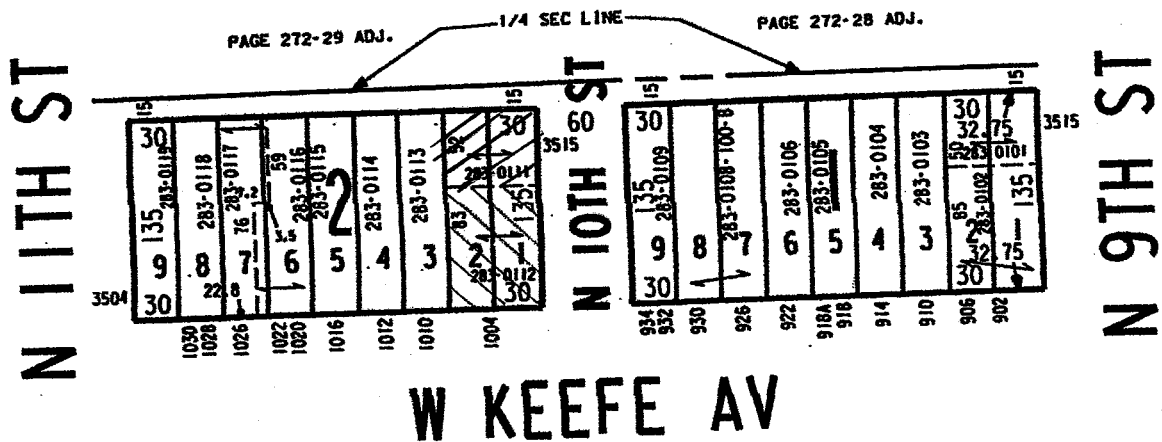
SW 08-7-22
ATLAS P. 283

283

283-18
SCALE 1" = 100'



MILWAUKEE SAV. & INVEST.
ASS'N. SUBD. NO. 2



SW 08-7-22

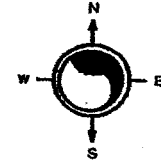
ATLAS P. 283

283

283-28

SCALE 1" = 80'

MILWAUKEE SAVINGS AND INVESTMENT ASSOCIATION SUBDIVISION NO. 2



W KEEFE AV

N 11TH ST

N 10TH ST

| | | | | | | | | | |
|------|------------|----------------|----------------|----------|----------------|----------|--------------|--------|------|
| | 1033 | | 1021 | 1017 | 1013 | 1011 | 1009 | 1001 | |
| | 30 | | 30 | 5 | 3 | 2 | 1 | 30 | |
| | 120.54 | 120.61 | 120.75 | 120.82 | 120.89 | 121.03 | 121.10 | 121.17 | |
| | 57283-0268 | 283-0264-100-7 | 283-0263 | 283-0262 | 283-0261-100-0 | 283-0259 | | | |
| 3454 | 30 | 15 | 15 | | | 4.5 | 30 | | |
| 10 | | | | | | | | | 10 |
| 3446 | 30 | 10 | 125 | 30 | 20 | 30 | 125 | 63 | 30 |
| | | | 283-0269 | | | | | | |
| 3440 | | 11 | | | | | | 62 | |
| | | | 283-0270 | | | | | | |
| | | 12 | | | | | 283-0319-110 | 61 | 3439 |
| | | | 283-0271 | | | | | | |
| | | 13 | | | | | 283-0318 | 60 | 3433 |
| | | | 283-0272 | | | | | | |
| | | 14 | | | | | 283-0317 | 59 | 3429 |
| | | | 283-0273 | | | | | | |
| | | 15 | | | | | 283-0316 | 58 | 3425 |
| | | | 283-0274 | | | | | | |
| | | 16 | | | | | 283-0315 | 57 | 3423 |
| | | | 283-0275-100-7 | | | | | | |
| | | 17 | | | | | 283-0314 | 56 | 3417 |
| | | | | | | | | | |
| | | 18 | | | | | 283-0313 | 55 | 3415 |
| | | | 283-0277-100-8 | | | | | | |
| 3414 | | 19 | | | | | 283-0312 | 54 | 3409 |
| | | | 283-0278 | | | | | | |
| 3408 | | 20 | | | | | 283-0311 | 53 | 3405 |
| | | | 283-0279 | | | | | | |
| 3406 | | 21 | | | | | 283-0310 | 52 | 3403 |
| | | | 283-0280 | | | | | | |
| 3402 | 30 | 22 | 125 | 20 | | | 125 | 51 | |
| 3400 | | | | | | | | | |

PAGE 283-27 ADJ.

N.W. 24-7-21
ATLAS P. 348

348

348-37

SUBDIVISION OF LOT 7 BLK 5,
- 7 - 6, } GRANT PARK
- 24 - 4, }
Vol. 20 Page 27



GRANT PARK
Vol. 16 Page 37

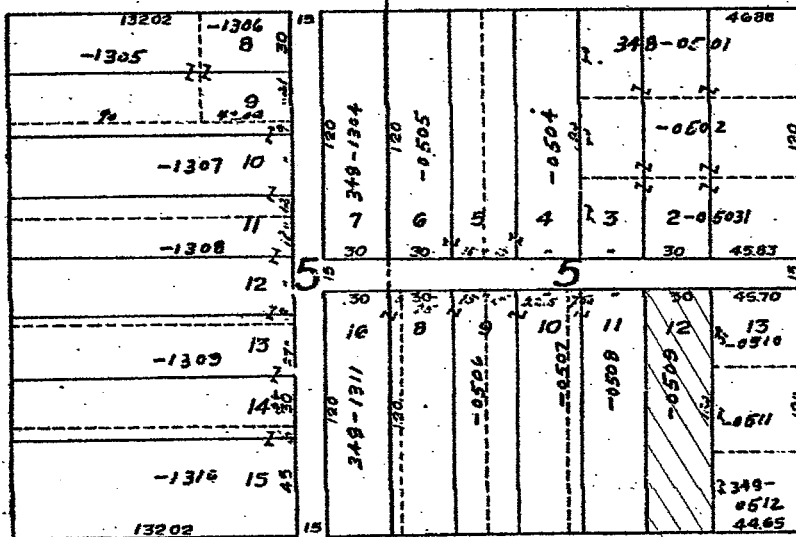
W. GARFIELD AVE.
4235 4229 4225 4219

BLVD.
2184

2178

2170

N. SHERMAN
2164
2166



2177
2175

2171
2169

2165

2157

2153

2147

ST.

N. 42ND

W. SPAULDING

4226 4222 4218 4214 4210 4206 4202
4216 4212 4208

PLACE

MICROFILMED

*When change info
8-25-21
RCS*

72. 91
34. 35

6