



Department of City Development  
Housing Authority  
Redevelopment Authority  
City Plan Commission  
Historic Preservation Commission  
NIDC

Rocky Marcoux  
Commissioner

Martha L. Brown  
Deputy Commissioner

FN 050244  
Exhibit A  
Revisions as  
of 7/26/05

**Memo**

**Date:** July 26, 2005

**To:** City Clerk's Office

**Cc:** File

**From:** Planning Administration

**RE:** File No. 050244

---

Attached are copies of revised drawings meeting the City Plan Commission conditions of approval. At this morning's special meeting, the Common Council approved the attached documents. Please add the following documents to the Council file:

1. Revised Owner's Written Narrative
2. Statement including specifications for landscaping
3. Revised Vicinity Map, removing parcels not included in General Planned Development
4. Revised Site Plan, indicating building setback dimensions,



# Word of Hope Ministries, Inc.

MINISTRY LIFE FOR CHURCH PEOPLE

2677 North 40<sup>th</sup> Street Milwaukee, Wisconsin 53210  
Office: 414/447-1965 Technology: 414/447-0138 Fax: 414/447-1964

July 25, 2005

Department of City Development  
ATTN: Vanessa

Dear Vanessa:

I am adding the additional language for purposes of supplementing the plan of operation. The Holy Cathedral Church of God in Christ is a religious organization and conducts religious services. Its services are typically conducted at the following times:

Sunday 8:30am, 11:00am, 6:45pm  
Tuesday 7:00pm  
Friday 7:00pm

While attendance varies from event to event, attendance on Sunday is approximately 700-900 people and on other days it is approximately 200-300 people. In addition to the religious services, ancillary ministries of the church are conducted at the facility, including but not limited to meetings of church auxiliaries. It would be uncommon for these meetings to exceed more than 100 persons in attendance at one time.

The facilities will also house the technology and employment job placement components of operations. The hours of those programs are 8:30am to 4:00pm Monday – Fridays with extended hours being 5:30pm-7:30pm Monday – Wednesday. The number of persons on the site at any one time in connection with these activities would not exceed 60-75 people (40-50 clients, 10-20 employees).

The church has a full time maintenance and operation staff that conducts regular cleaning of the facilities, exterior and interior.

It is contemplated that the Family Life Center will be a community resource where neighbors will be invited to attend family life activities to improve family life skills. It is expected that there will be collaborations with other community groups to provide outreach or business services. Examples of such organizations would be as listed on exhibit A. Typically such collaborative efforts would not exceed 10-15 people.

Periodically there will be special events for religious services that would normally be held including such things as weddings, funerals, banquets, and the like.

Sincerely,

*Dr. C. H. McClelland*

Dr. C. H. McClelland  
President

Exhibit A

- Medical College of Wisconsin / Church Partnership
- Milwaukee Area Technical College
- Employer Representatives of various Companies

HOLY CATHEDRAL Church of God in Christ  
Pastor Charles H. McClelland

July 25, 2005

Department of City Development  
RE: Holy Cathedral Church and School Planned Development  
Resolution file No. 050244 Addendum 1

ATTN: Vanessa

LANDSCAPE PLAN PROPOSAL

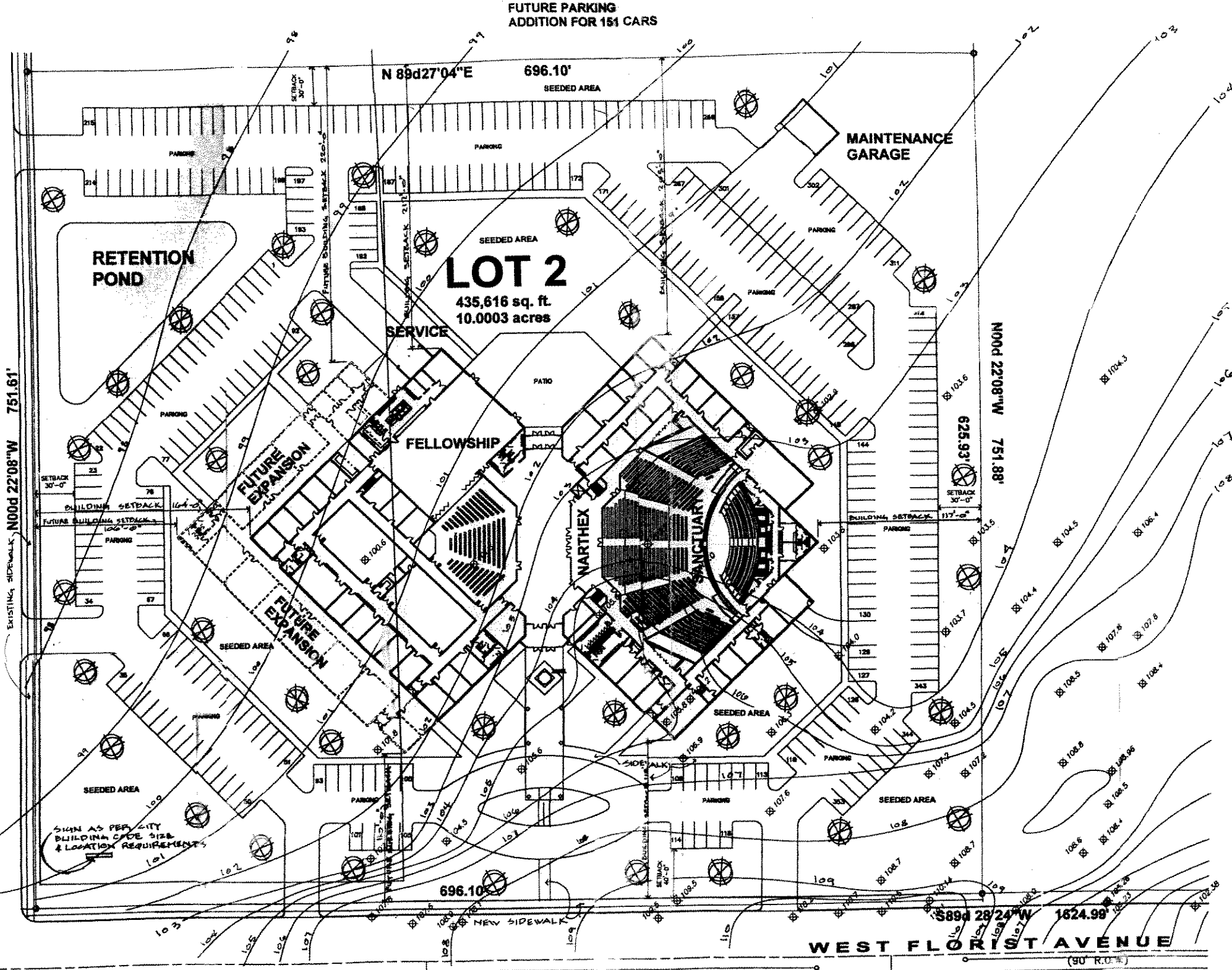
The landscape plan proposed for the Holy Cathedral Church of God in Christ planned development, will comply with the City of Milwaukee zoning requirements of chapter 295-405 1a thru 1c site landscape requirements for RM3 zoning.

The detailed landscape plan will include the identification and location of plantings for the site perimeter, edge treatment, and parking lot areas in the Detail Planned Development proposal.

HOLY CATHEDRAL Church of God in Christ



NORTH 73rd STREET  
(70' R.O.W.)



**LOT 2**  
435,616 sq. ft.  
10.0003 acres

FUTURE PARKING  
ADDITION FOR 151 CARS

PROPOSED PARKING  
FOR 363 CARS (LOT 2)

FUTURE PARKING  
ADDITION FOR 151 CARS

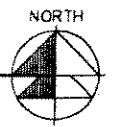
LANDSCAPING (PROPOSED)  
TREES

**DIVIDED PROPERTY AREAS:**

LOT 1:	LOT 2:	LOT 3:	LOTS 2+3
696,872 sq. ft. 16.0002 acres	435,616 sq. ft. 10.0003 acres	87,673 sq. ft. 2.0127 acres	223,288 sq. ft. 5.1130 acres

**SITE PLAN**

SCALE: 1" = 40'



Written drawings on these drawings and have provisions for actual dimensions. Customers shall verify and be responsible for all dimensions and locations on the job. All dimensions are given in feet and inches unless otherwise specified. The engineer, architect, or other professional responsible for the design of any work, shall be responsible for the accuracy of the drawings. The engineer, architect, or other professional responsible for the design of any work, shall be responsible for the accuracy of the drawings. The engineer, architect, or other professional responsible for the design of any work, shall be responsible for the accuracy of the drawings.

**REVISIONS**

NO.	DESCRIPTION

**PROJECT**  
NEW CHURCH DEVELOPMENT  
HOLY CATHEDRAL Church of God in Christ  
W. Florist Ave., Milwaukee, WI

101 N. Webster Ave.  
Green Bay, WI 54301  
(920) 435-6363  
(Fax) 435-2541

**THOMAS KLOIBER & ASSOCIATES, Inc.**

**JOB NO.**  
**FILE NO.**  
**DRAWN BY**  
JCS  
**DATE**  
12/18/04  
**SHEET NO.**