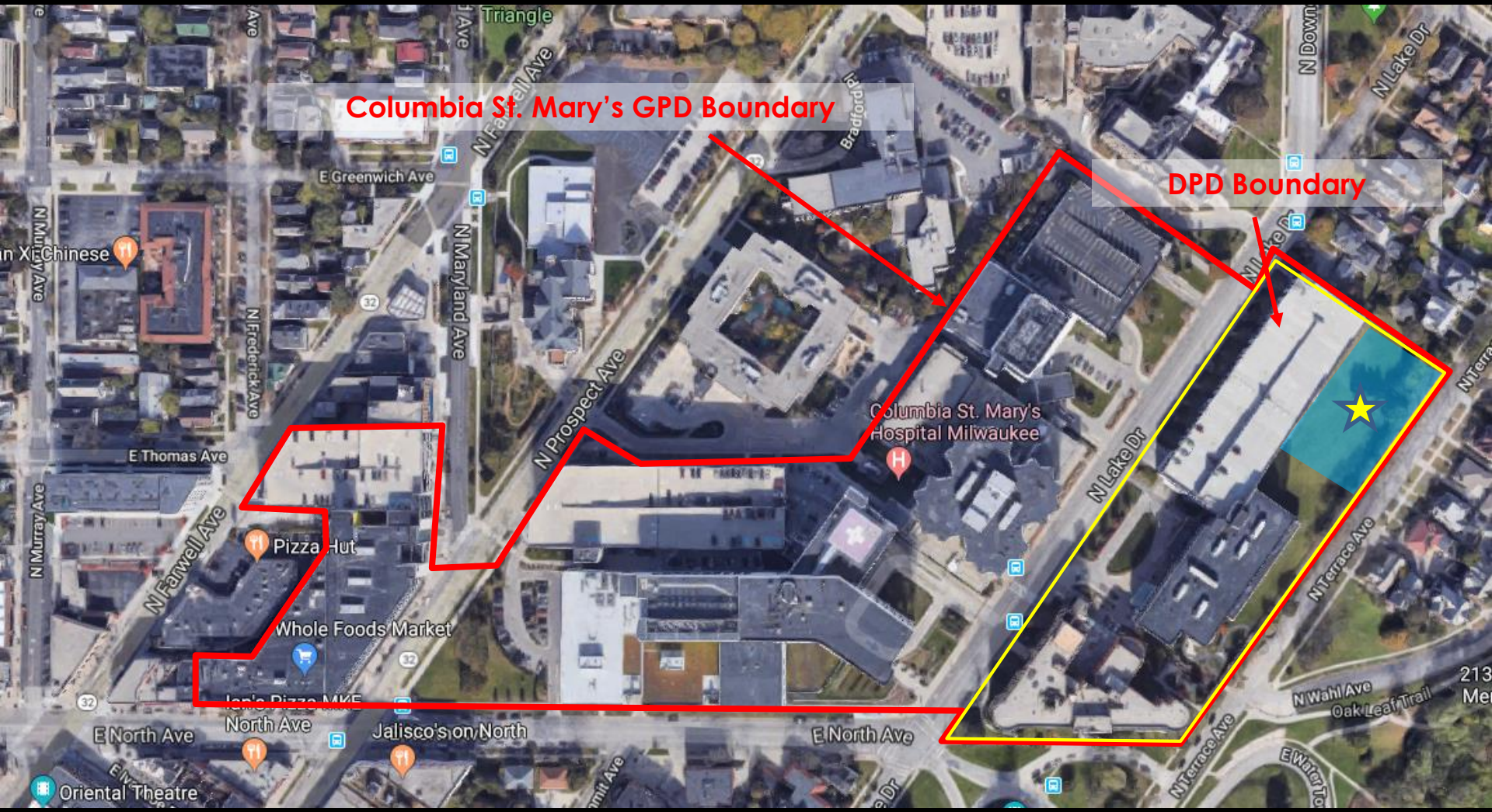
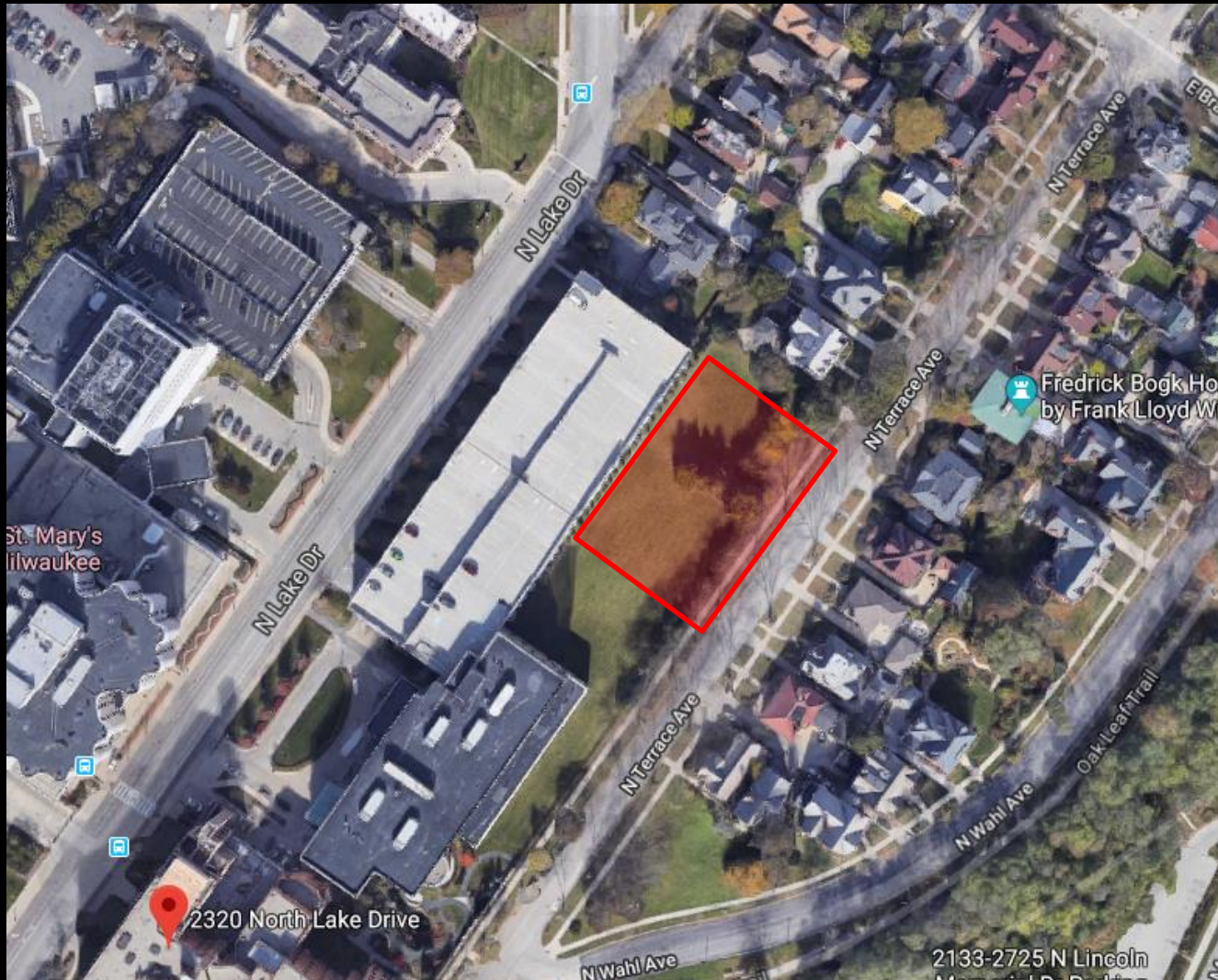


File Nos. 180632, 180584 & 180316



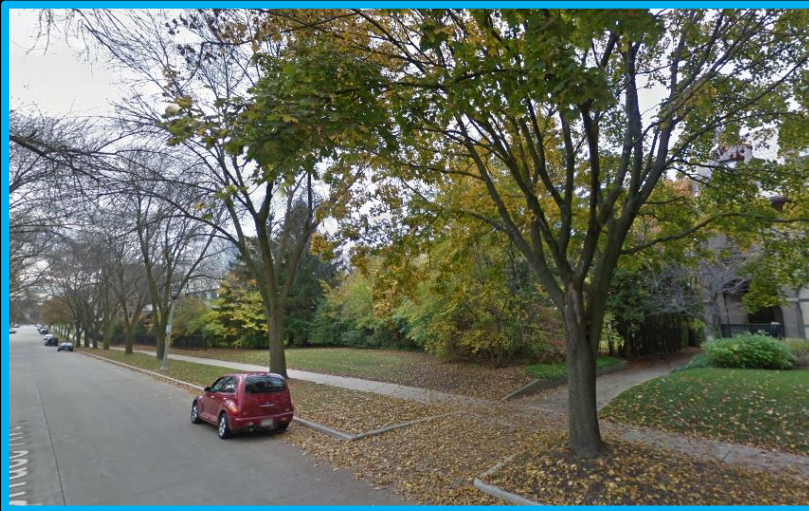
File No. 180632

Resolution approving a final Certified Survey Map for land located on the north side of East North Avenue and the west side of North Terrace Avenue to divide one parcel into four parcels, in the 3rd Aldermanic District.

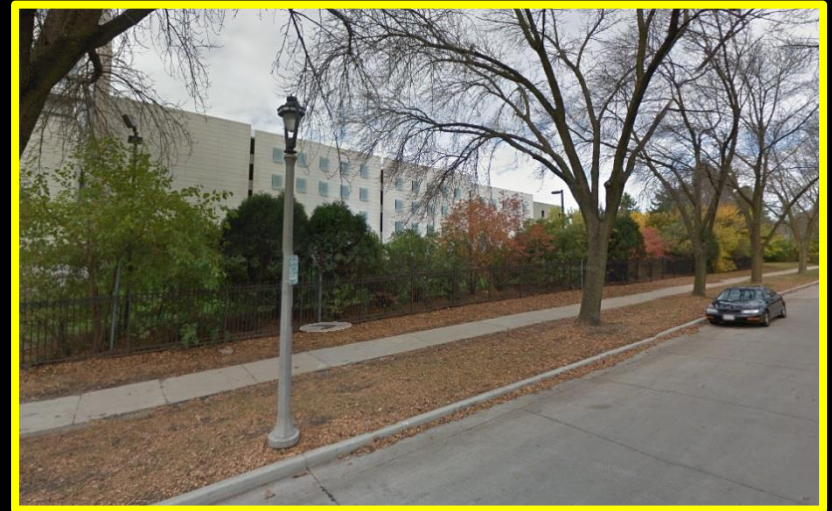


File No. 180632

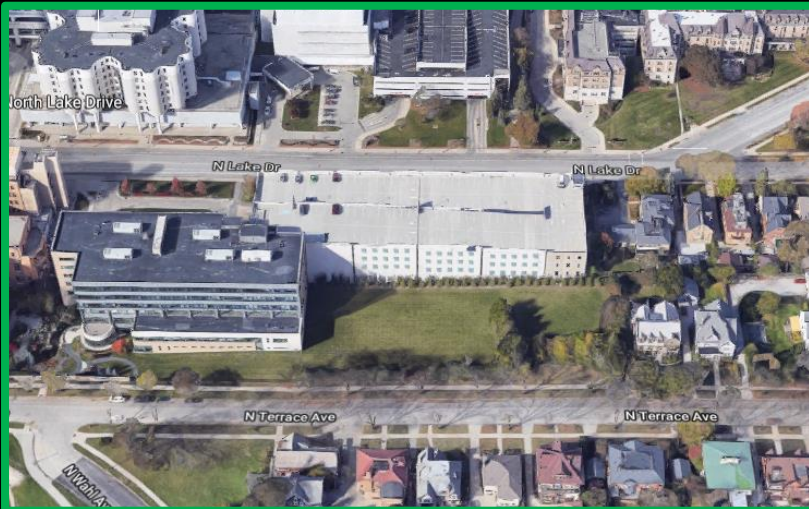
Site Context Photos



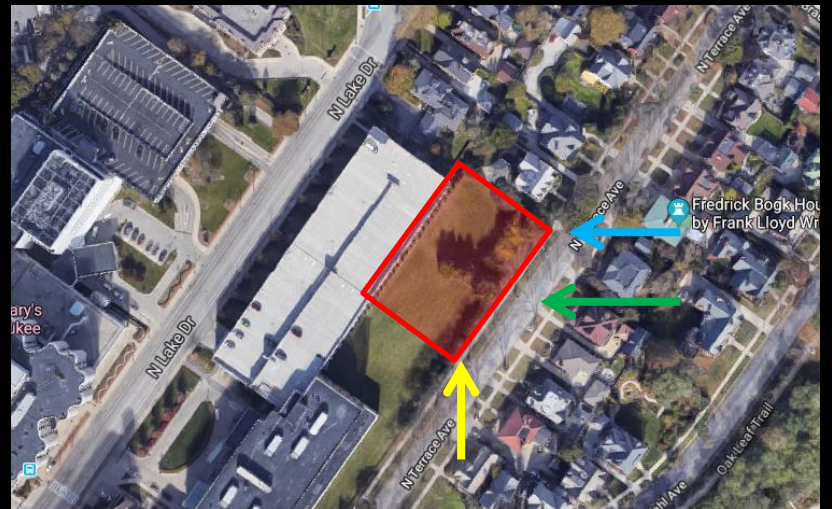
View west from N. Terrace Ave.



View north from N. Terrace Ave.

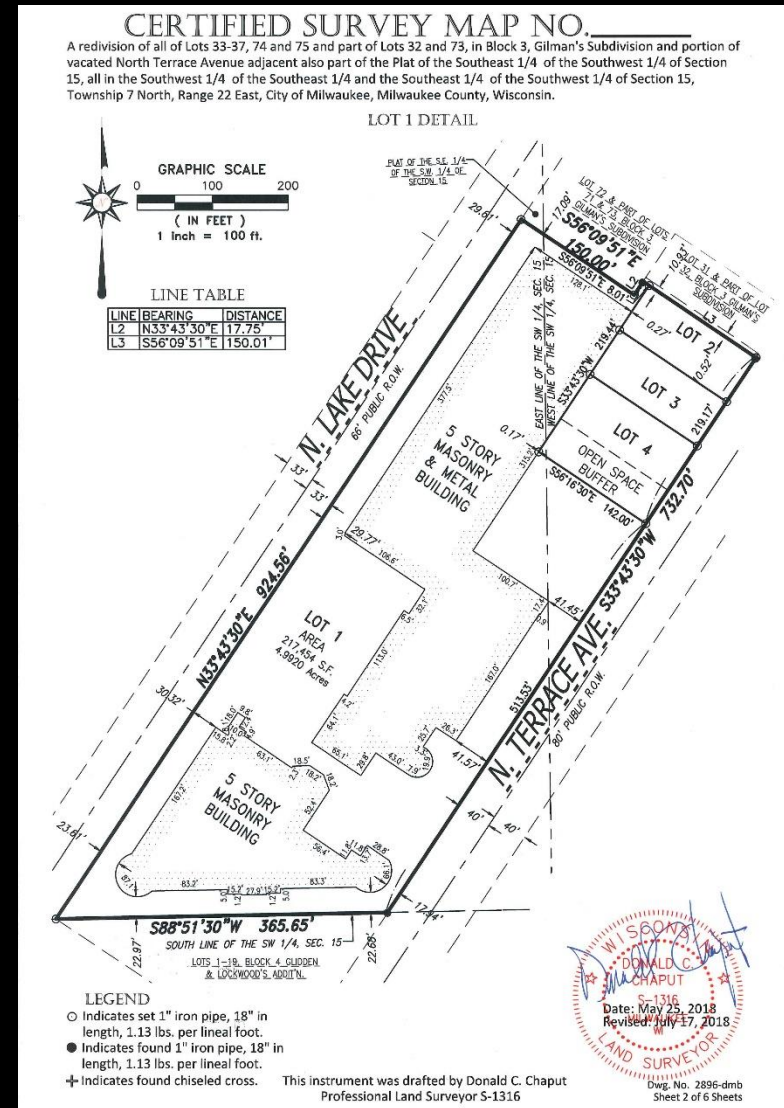
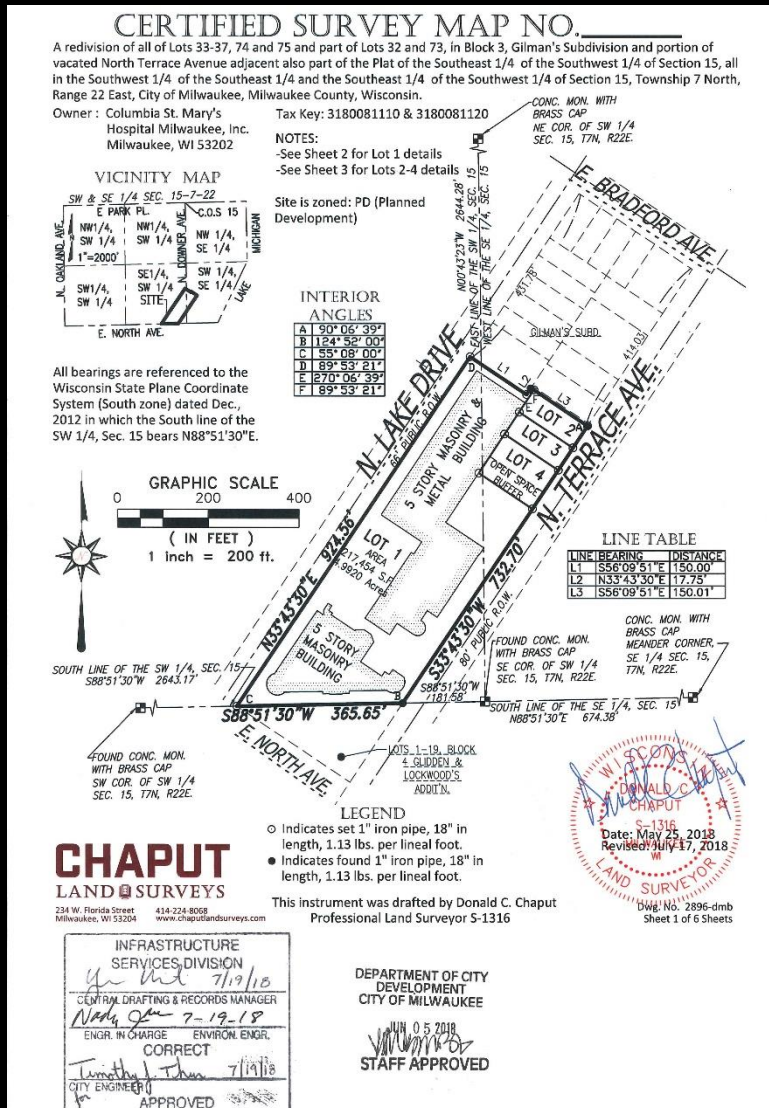


Aerial view west from N. Terrace Ave.



File No. 180632

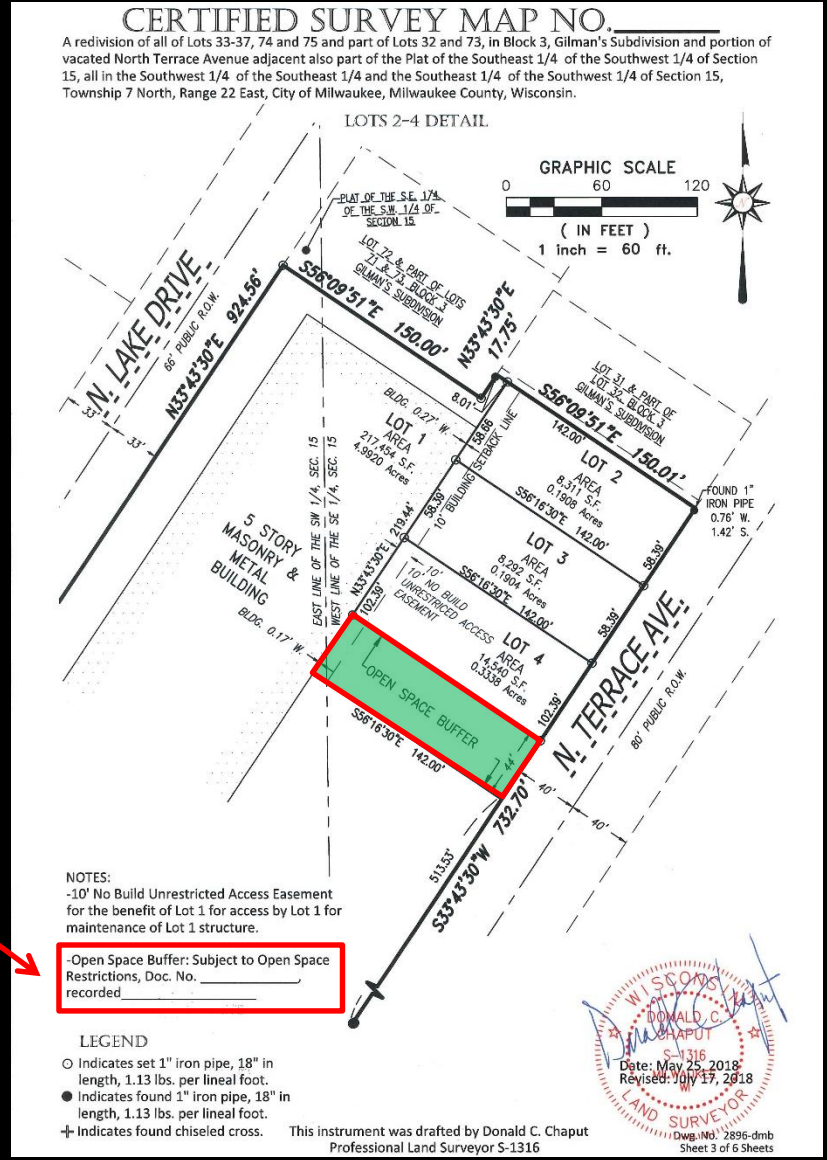
Resolution approving a final Certified Survey Map for land located on the north side of East North Avenue and the west side of North Terrace Avenue to divide one parcel into four parcels, in the 3rd Aldermanic District.



File No. 180584

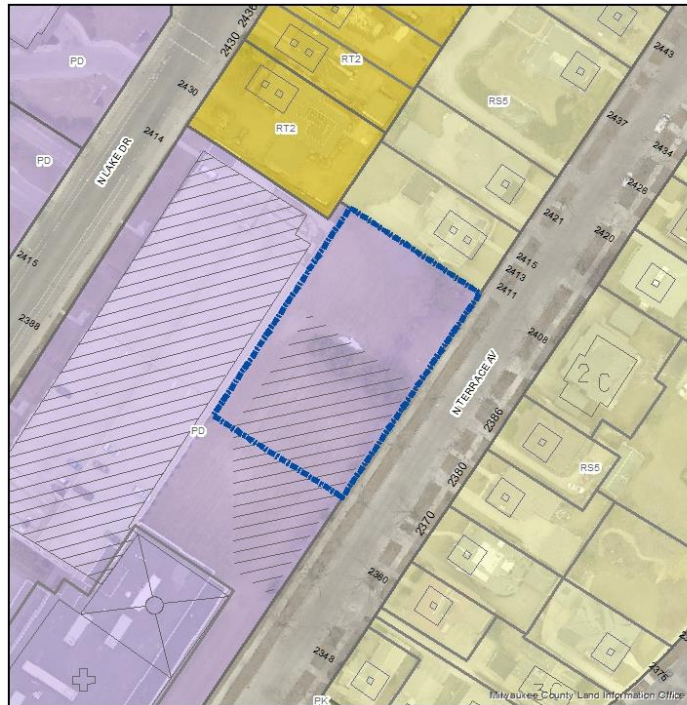
Substitute resolution authorizing City of Milwaukee entry into an Open Space Restriction Agreement concerning part of 2320 North Lake Drive, Milwaukee, Wisconsin, in the 3rd Aldermanic District.

The Open Space Agreement will be recorded prior to the CSM. Recording information will be included on the CSM



File No. 180316

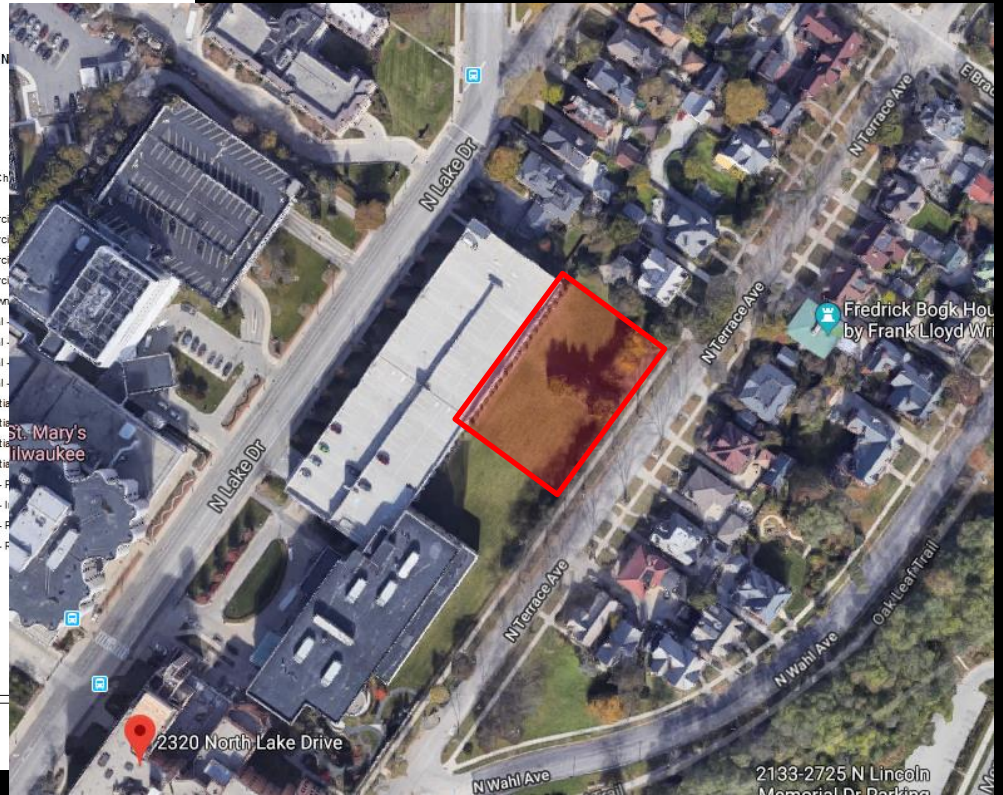
A substitute ordinance relating to the 1st Amendment to the General Planned Development known as Columbia St. Mary's and the 3rd Amendment to the Detailed Planned Development known as Columbia St. Mary's, Phase 1, to remove the northeast portion of 2320 North Lake Drive along North Terrace Avenue and rezone that portion to Single-Family Residential, RS5, to accommodate the creation of three single-family lots on the subject site located on the west side of North Terrace Avenue, north of East North Avenue, in the 3rd Aldermanic District.



FN 180316
PD to RS5
Part of 2320 N
July 2016

Legend

- Zoning Change
- Commercial
- Commercial
- Commercial
- Commercial
- Downtown
- Industrial
- Industrial
- Industrial
- Industrial
- Residential
- Residential
- Residential
- Residential
- Special - F
- Special - F
- Special - F
- Special - F



2133-2725 N Lincoln
Memorial Dr Parking