

A wide-angle photograph of the Milwaukee skyline and waterfront. The sky is a vibrant blue with scattered white clouds. In the foreground, a paved road curves through a grassy area, with a small green vintage-style car driving. A body of water, likely the Milwaukee River, flows through the middle ground. The background is filled with a dense urban skyline, including various skyscrapers and buildings. A prominent orange water tower is visible among the structures. The overall scene is bright and clear, suggesting a sunny day.

A new symbol
for Milwaukee.

A flag defined

A flag should be simple and readily made; it should be different from the flag of any other country, place or people; it should be significant; it should be readily distinguishable at a distance; the colors should be well contrasted and durable; and lastly, and not the least important point, it should be effective.



MILWAUKEE



Greater Together is a nonprofit organization that embraces collaboration and creativity to drive fair and just inclusion into Greater Milwaukee's Creative Industries so all can participate, prosper, and reach their full potential.



THE PEOPLE'S FLAG
OF
MILWAUKEE

MILWAUKEE
DIGITAL HUMANITIES
LAB

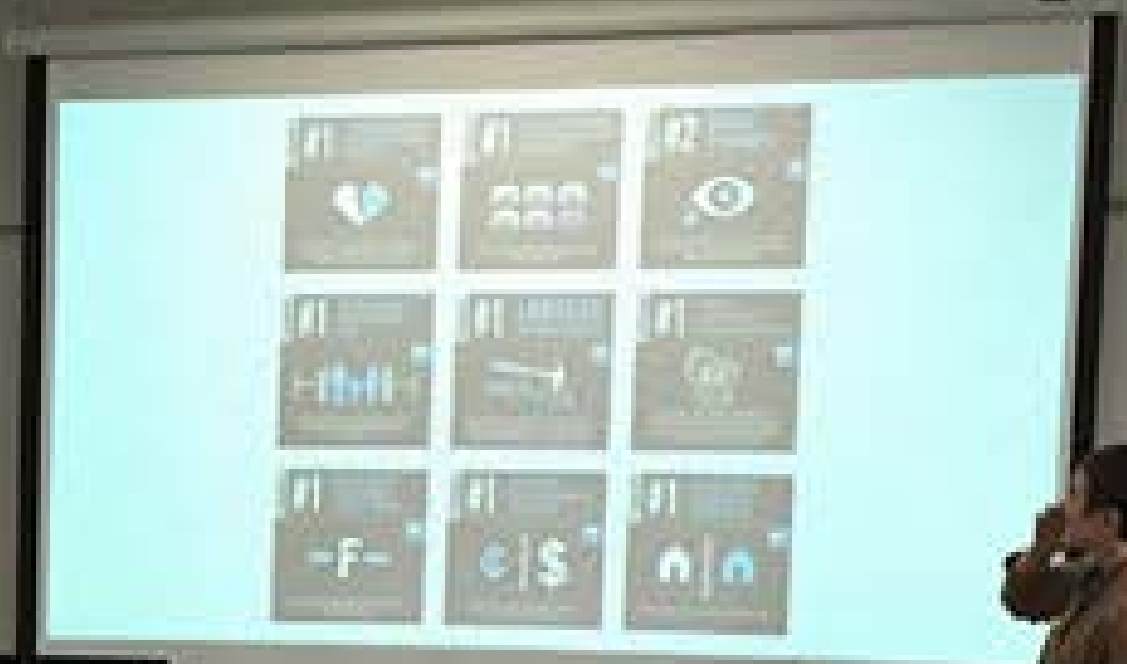
Digital
Humanities
Lab





Handwritten notes on a whiteboard, including dates and names:

- 3-14-16 - STAFFING AGENTS
- 3-21-16 - HOTT
- 3-22-16 - STAFF
- 3-24-16 - HOTT
- 3-25-16 - HOTT







THE YOUTH PLAN
MILWAUKEE
A flag for the city we aspire to.



MILWAUKEE
THE YOUTH PLAN



MILWAUKEE
THE YOUTH PLAN
A flag for the city we aspire to.



WASHINGTON ALUMNI
We are Making History



WASHINGTON ALUMNI
We are Making History

NIKEBLUE

1,006

flag design submissions received from the public



Ted Kaye



John Gurda



Jena Sher



Xavier Ruffin



Steve Kodis



MILWAUKEE • WISCONSIN

JOURNAL SENTINEL

PART OF THE USA TODAY NETWORK

WEATHER
70/49
Showers
Map, details
back of Sports

Business
Joy Global eliminates department
Beloved buck Bow Tie gets place of honor
GOOD NEWS: Stable gas prices expected
Paul A. Smith / Sports

Beloved buck Bow Tie gets place of honor
Paul A. Smith / Sports

GOOD NEWS: Stable gas prices expected
Business

3 state areas top middle-income list

But Wisconsin, like nation, sees fortunes of those in the center decline, study says





BANNER DAY FOR CITY?

Competition hopes to find design to replace Milwaukee's hot mess of an official flag





RYAN SUPPORT SOLID AT HOME

But picture changes by speaker at national level





STATE FAIR PARK DIRECTOR FRENETTI FIRED

Park board votes unanimously after hours of closed-door deliberations





NEWSWATCH

- LOCAL** High-capacity wells: Attorney General Brad Schimel issues a legal opinion narrowing the powers of the Department of Natural Resources to regulate high-capacity wells. **3A**
- SPORTS** Sewell dies: Jeff Sewell, a basketball star at Gra-Ton High School who later helped lead Al McGuire's Marquette Warriors to the 1970 NIT championship, has died. **1B**
- WORLD** Iraqi violence: Baghdad has its deadliest day this year with three car bombs claimed by the Islamic State. **8A**
- NATION** Folic acid and autism: A study suggests that very high levels of folic acid in mothers' blood at childbirth is linked to a higher risk of the children developing autism. **5A**

The Tax is On Us Flooring SALE May 11* - 17*

- 50% OFF on most items (see exclusions in store)
- Low prices on select items
- Special 10% OFF on all orders over \$500

Call for details: 503.243.8900

70/49 Showers
Map, details
back of Sports

department
Business

gets place of honor
Paul A. Smith / Sports

prices
Business

3 state areas top middle-income list

But Wisconsin, like nation, sees fortunes of those in the center decline, study says

BANNER DAY FOR CITY?

Competition hopes to find design to replace Milwaukee's hot mess of an official flag





RYAN SUPPORT SOLID AT HOME

But picture changes by speaker at national level





STATE FAIR PARK DIRECTOR FRENETTI FIRED

Park board votes unanimously after hours of closed-door deliberations





NEWSWATCH

- LOCAL** High-capacity wells: Attorney General Brad Schimel issues a legal opinion narrowing the powers of the Department of Natural Resources to regulate high-capacity wells. **3A**
- SPORTS** Sewell dies: Jeff Sewell, a basketball star at Gra-Ton High School who later helped lead Al McGuire's Marquette Warriors to the 1970 NIT championship, has died. **1B**
- WORLD** Iraqi violence: Baghdad has its deadliest day this year with three car bombs claimed by the Islamic State. **8A**
- NATION** Folic acid and autism: A study suggests that very high levels of folic acid in mothers' blood at childbirth is linked to a higher risk of the children developing autism. **5A**

State Fair Park director Frenetti
Parks board votes unanimously after hours of closed-door deliberations

Leah Vuikmir (R-Wauwatosa), council legislators who sit on the committee rushed out of the meeting after the decision was reached. Frenetti's attorney, Frankie, said the issue that led to the move involved merit compensation. After meeting in closed session for more than four hours, the Wisconsin State Fair Park Board voted unanimously Wednesday night to immediately terminate the employment of State Fair executive director Rick Frenetti.

The board named an interim replacement, Kathleen O'Leary, who was the chief operating officer.

The motion to fire Frenetti was made by state Sen.

70/49 Showers
Map, details
back of Sports

department
Business

gets place of honor
Paul A. Smith / Sports

prices
Business

3 state areas top middle-income list

But Wisconsin, like nation, sees fortunes of those in the center decline, study says

BANNER DAY FOR CITY?

Competition hopes to find design to replace Milwaukee's hot mess of an official flag





RYAN SUPPORT SOLID AT HOME

But picture changes by speaker at national level





STATE FAIR PARK DIRECTOR FRENETTI FIRED

Park board votes unanimously after hours of closed-door deliberations





NEWSWATCH

- LOCAL** High-capacity wells: Attorney General Brad Schimel issues a legal opinion narrowing the powers of the Department of Natural Resources to regulate high-capacity wells. **3A**
- SPORTS** Sewell dies: Jeff Sewell, a basketball star at Gra-Ton High School who later helped lead Al McGuire's Marquette Warriors to the 1970 NIT championship, has died. **1B**
- WORLD** Iraqi violence: Baghdad has its deadliest day this year with three car bombs claimed by the Islamic State. **8A**
- NATION** Folic acid and autism: A study suggests that very high levels of folic acid in mothers' blood at childbirth is linked to a higher risk of the children developing autism. **5A**

Finalists to be on display
Xavier Ruffin (from left), Steve Kodis and Ken Hanson print and look over entries to the flag design competition at Hanson Dodge Creative.

That it includes County Stadium on it," Barrett said.

Inspired by Mars, a local graphic designer named Steve Kodis is now on a mission to create a new flag for the city.

"I stumbled onto Milwaukee's flag," Kodis said. "Internally, when I saw it, I just sort of said, 'Man, we could have something so much better. We could have such a cooler flag.'"

Kodis has since devoted much of the last year to an effort to redesign a new flag. He launched a website chronicling the movement, The People's Flag of Milwaukee, and teamed up with Ken Hanson, the executive director of Greater Together, a nonprofit organization devoted to promoting racial and economic equality.

Together, they organized an ambitious contest to design a new flag for the city.

"I could have never, ever done it on my own," Kodis said.

He said the effort went beyond simply redesigning the flag to helping create a "beautiful connection between the city and its people."

Organizers held a number of design workshops around Milwaukee, at locations including Washington High School, Bay View High School, the University of Wisconsin-Milwaukee and the Milwaukee Institute of Art and Design.

After receiving more than 1,000 entries — 1,006 in all — the contest organizers named a team of judges to narrow the field to the top 50 designs, plus another 15 honorable mentions.

"They will be on display at City Hall starting Saturday, when the five finalists will also be unveiled. That same day they are set to launch an online rating process so the public can help pick a new flag."

Barrett praised the effort. "I view it as a great community engagement exercise to see whether we want to have this 'people's flag,' or even to consider changing our city flag," the mayor said. "It would take (Common Council action) ... to change it."

City Clerk Jim Owczarski said adopting a new city flag would be no easy feat.

"The challenge is that the Common Council is the one that has to put in the file to actually make the change, and to my knowledge, no member of the Common Council has agreed to do that," he said.

Owczarski added that he's happy the flag is getting so much attention.

Dedicated to the Highest Standards of Knowledge
Buying and Selling Cars



• All Silver & Gold Coins
• Silver Bars & Rounds

2069 South 108th Street, West
Mon-Fri 10-5 • Sat 10-4

CarSoup.com

we're here to help

GET YOUR CAR DEAL

NEW ADS PLACED! EXCLUSIVELY LOCAL SPECIALS! CHECK THEM OUT BEFORE!

WAY BIG SELECTION

CAR DETECTIVE TO HELP YOU FIND THE BEST DEAL

WAYS TO MAKE YOUR CURRENT DEAL BETTER

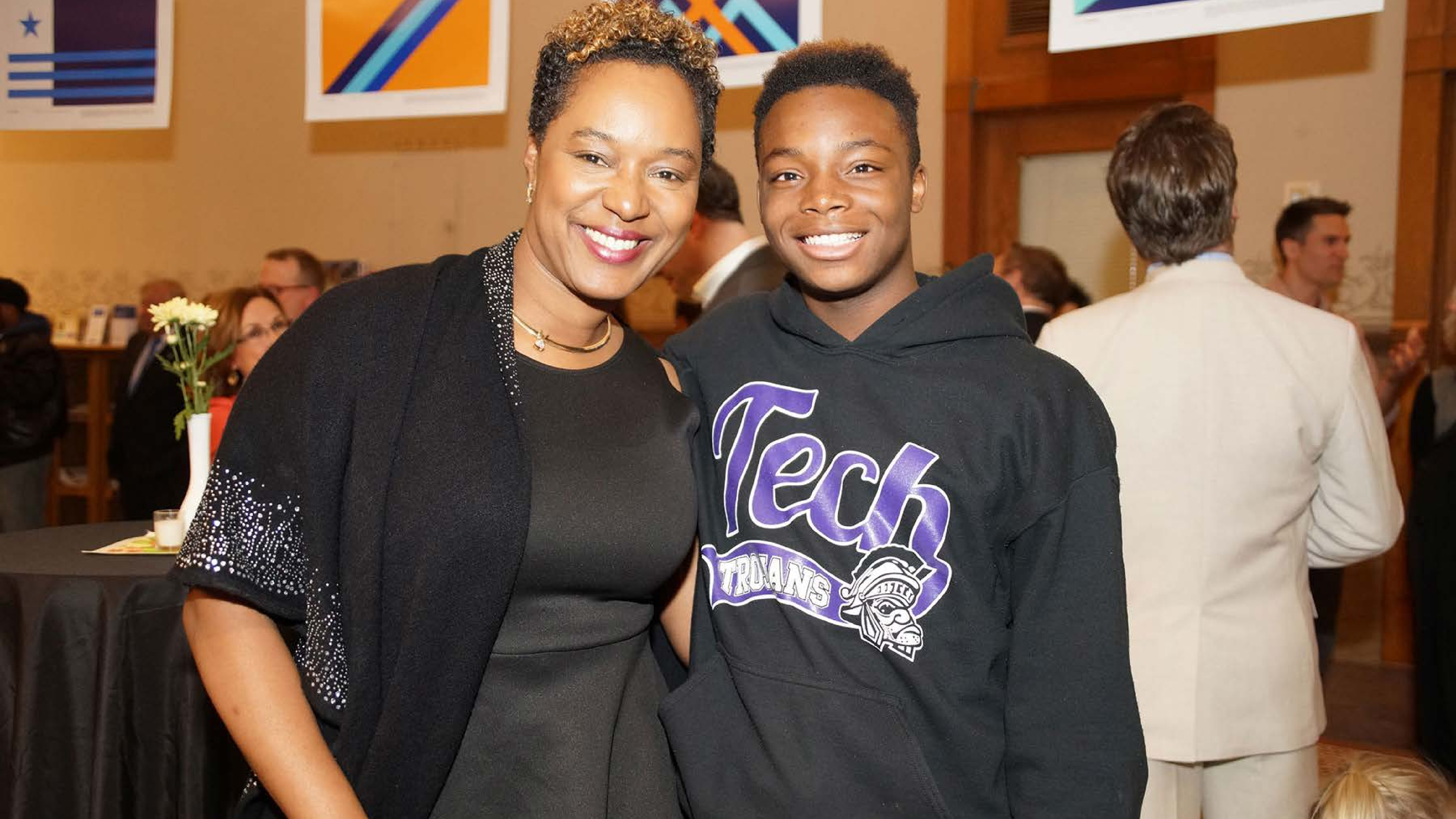
FINANCING OFFERS

INSIDER INFO



















Three Rivers Cameron Pothier

Milwaukee's three rivers flow from the land into the lake, with a large disc representing the city united and our brewing history.



**“M” Star
DeChazier Stokes-Johnson**

Four “M”s connect to form a cream-colored star representing Milwaukee on the blue lake, its Native American roots, and symbolizing the city’s bright future.



Cream City Star Jon Grider

The six points of the star symbolizes the three original sections of the city, its three rivers, representing Milwaukee as the “Cream City” and the largest in Wisconsin.



Sunrise Over the Lake Robert Lenz

The sun rising over Lake Michigan symbolizes a new day. The light blue bars in its reflection represent the city's three rivers (Milwaukee, Menomonee, Kinnickinnic) and three founding towns (Juneau Town, Kilbourn Town, Walker's Point). Gold represents our brewing history and white symbolizes unity.



Golden Arrow Chanya Hughes

Milwaukee's past, present, and future, moving in a positive direction, symbolized through its rivers, brewing history, and the lake, with white echoing the art museum.

6,137

rating responses received from the public



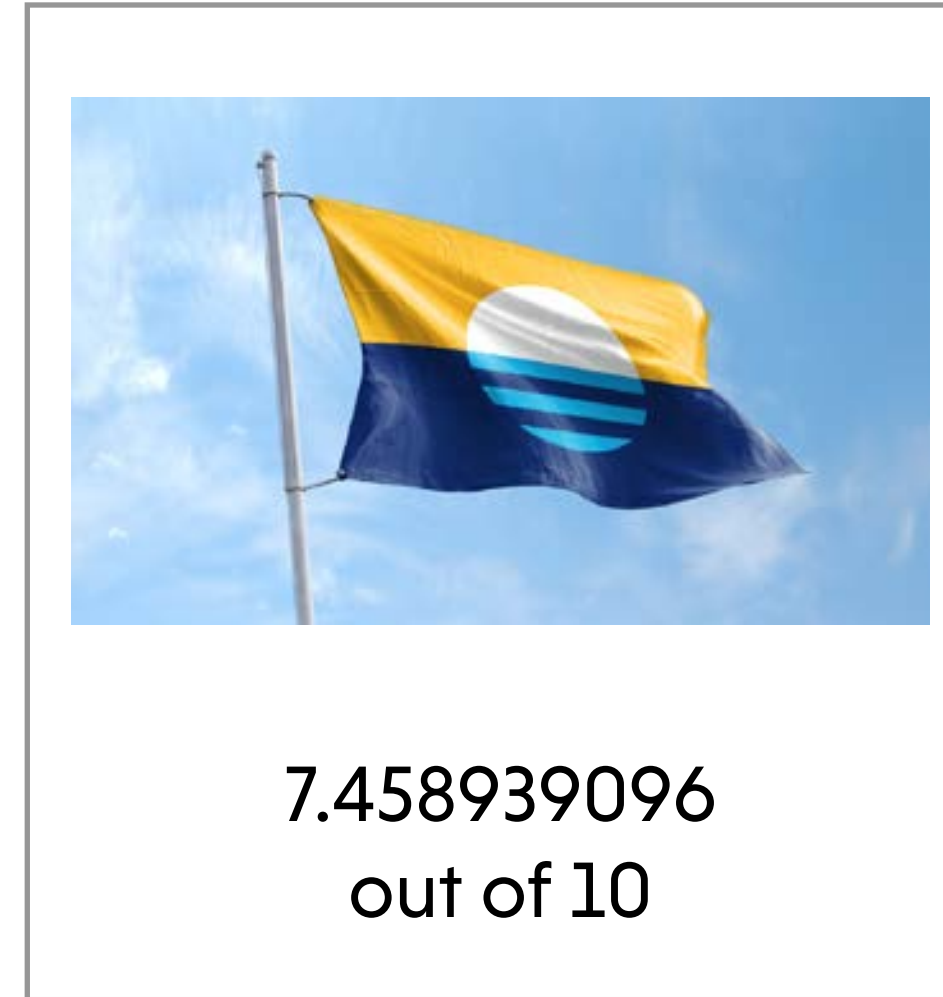
5.469941061
out of 10



5.923182711
out of 10



4.836345776
out of 10



7.458939096
out of 10



5.236738703
out of 10

A man with a beard and glasses, wearing a grey short-sleeved button-down shirt and a black flat cap, is performing on stage. He is holding a microphone in his right hand and gesturing with his left hand. The background features a large blue screen with the text "88.9 WJLB" and "RADIO LIVE". To the right, there is a rack of blue acoustic panels with a sign that says "Mindpool Live". A bass guitar is visible on the right side of the stage. The foreground shows the silhouettes of audience members' heads.

88.9 WJLB

RADIO LIVE

Mindpool Live



Let's make diversity into Milwaukee's greatest asset

Greater Together People's Flag of Milwaukee



89.3 WISN
RADIO MILWAUKEE



GREATER TOGETHER PEOPLE'S FLAG OF MILWAUKEE

What is the city we aspire to?

The People's Flag Design Initiative launched in February of 2016 and featured a series of issue-based workshops that focused on design and discussion about our aspirations as a city.

Over 600 entries are expected.

Professionals and discussion leaders are invited to engage in dialogue about a future that is equitable, prosperous, and inclusive.

The People's Flag of Milwaukee is a symbol of what we are going and what we want.





It's make diversity
to Milwaukee's
people meet.



GREATER TOGETHER PEOPLE'S FLAG OF MILWAUKEE

What is the city we aspire to?

The People's Flag Design Initiative launched in February of 2016 and featured a series of issues-based workshops that focused on design and discussion about the aspirations of a city.

Over 500 artists are expected.

Professional designers and community leaders gathered with teachers and community leaders to engage young people in conversations about a future where everyone can thrive and reach their full potential.

The result will be a 10-foot-tall flag that will be displayed in Milwaukee's City Hall.

May 14
City Hall
10:00 AM - 12:00 PM

June 14
City Hall
10:00 AM - 12:00 PM

Greater Together

















DISCOVERY
WORLD





2819

2821

FOR RENT





2 HOUR PARKING
7:00AM TO 7:00PM
No parking sign with a red 'P' in a circle and a slash.

BUD LIGHT
IMPORTED BEERS
CRAFT BEERS
Premium Cigars
e cig electronic vaporizers
e cig e-liquor

2690
ATM
BAY VIEW QUICK MART
Coors LIGHT

NATURAL AMERICAN SPIRIT
QUEST & WIC
T MOBILE CELL PHONES
Heineken

MKE
GROCERIES
QUEST & WIC
Corona Extra

PREMIUM CIGARS
GOLD BEER
IMPORTED

ATM
Gifts
FAX & LOTTERY

T-MOBILE
ROLL YOUR OWN TOBACCO
CIGARS AVAILABLE

TOBACCO
e cig electronic vaporizers
e cig e-liquor
Heineken

OPEN 7 DAYS A WEEK

COLD DOMESTICS & IMPORTS BEER





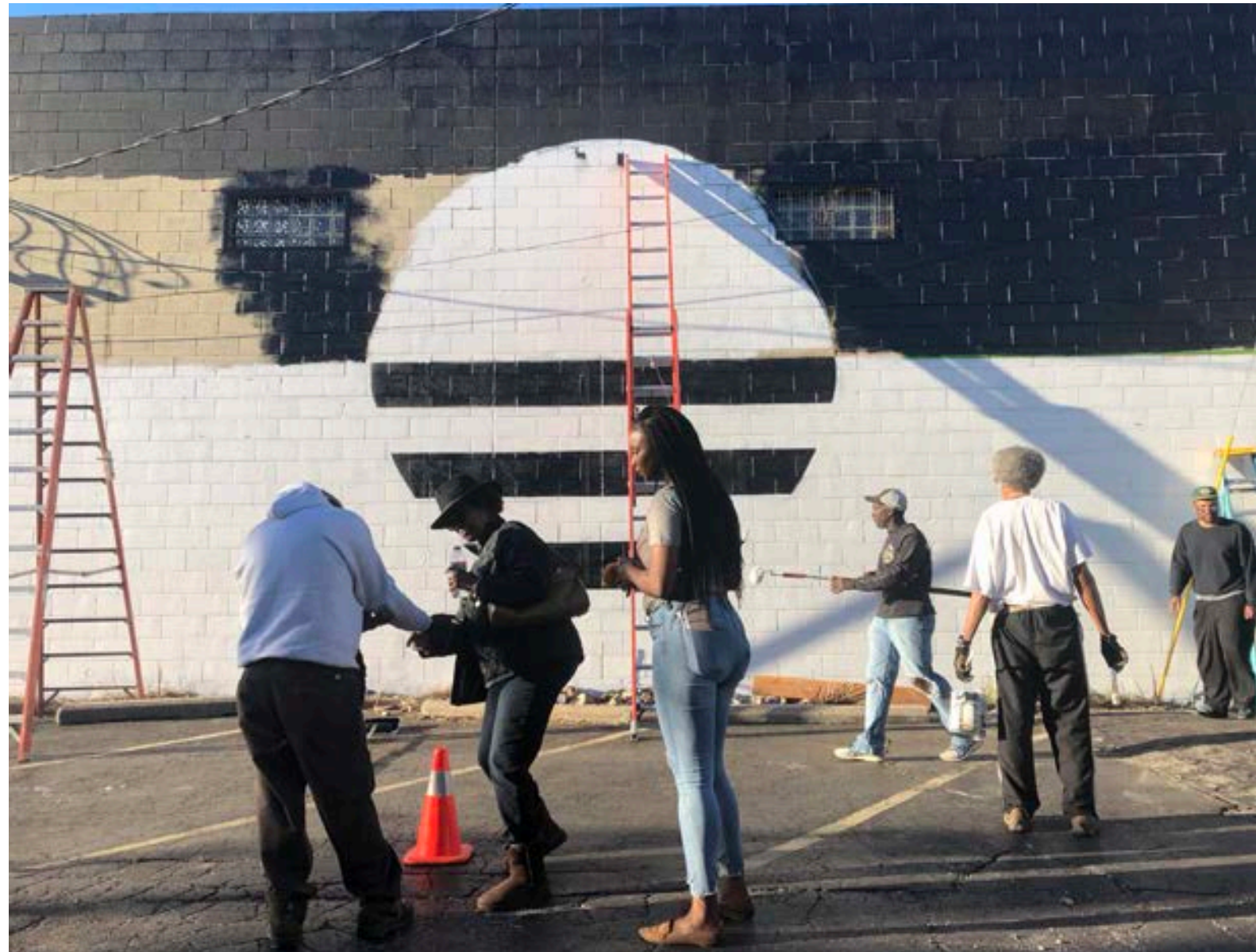
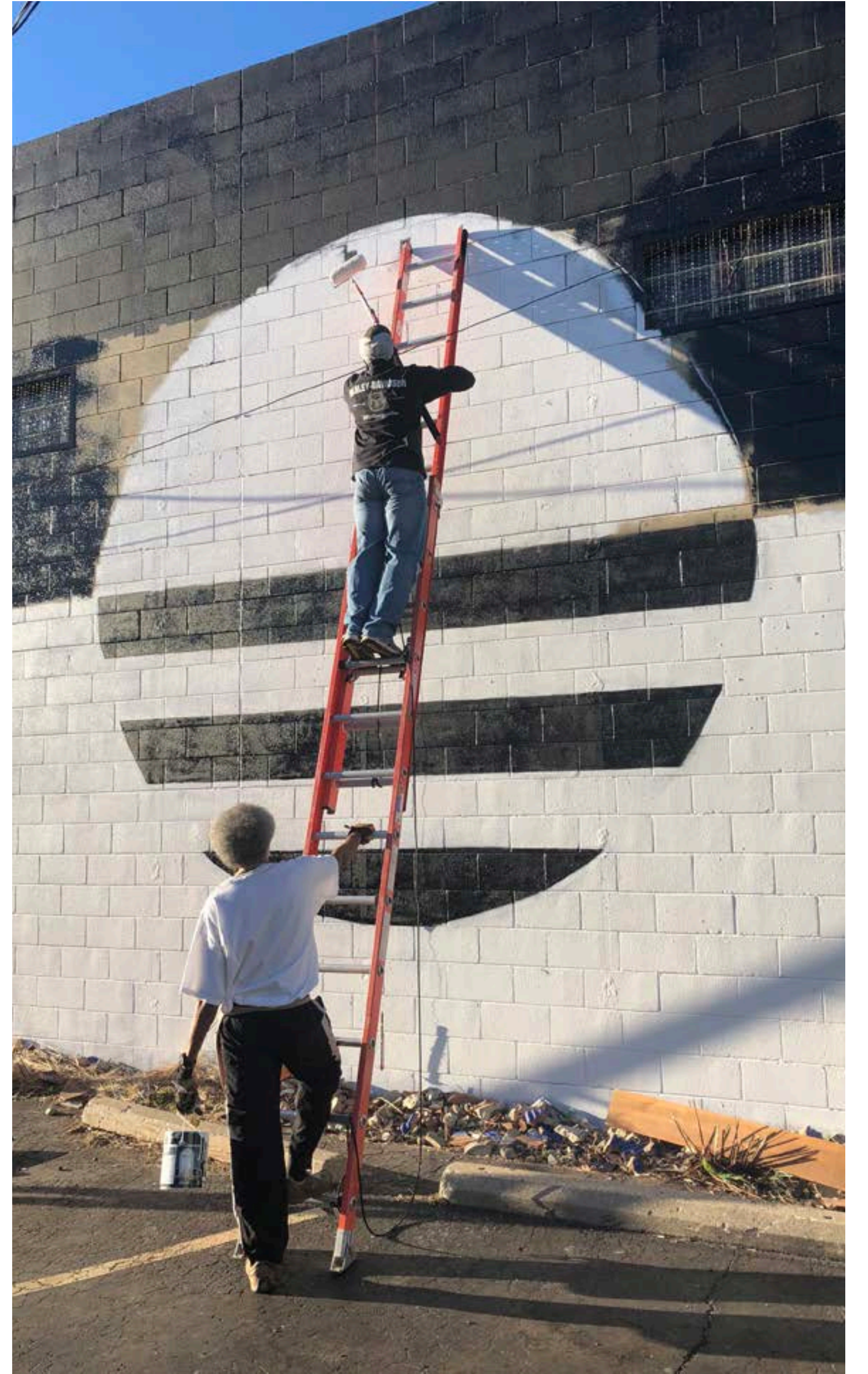
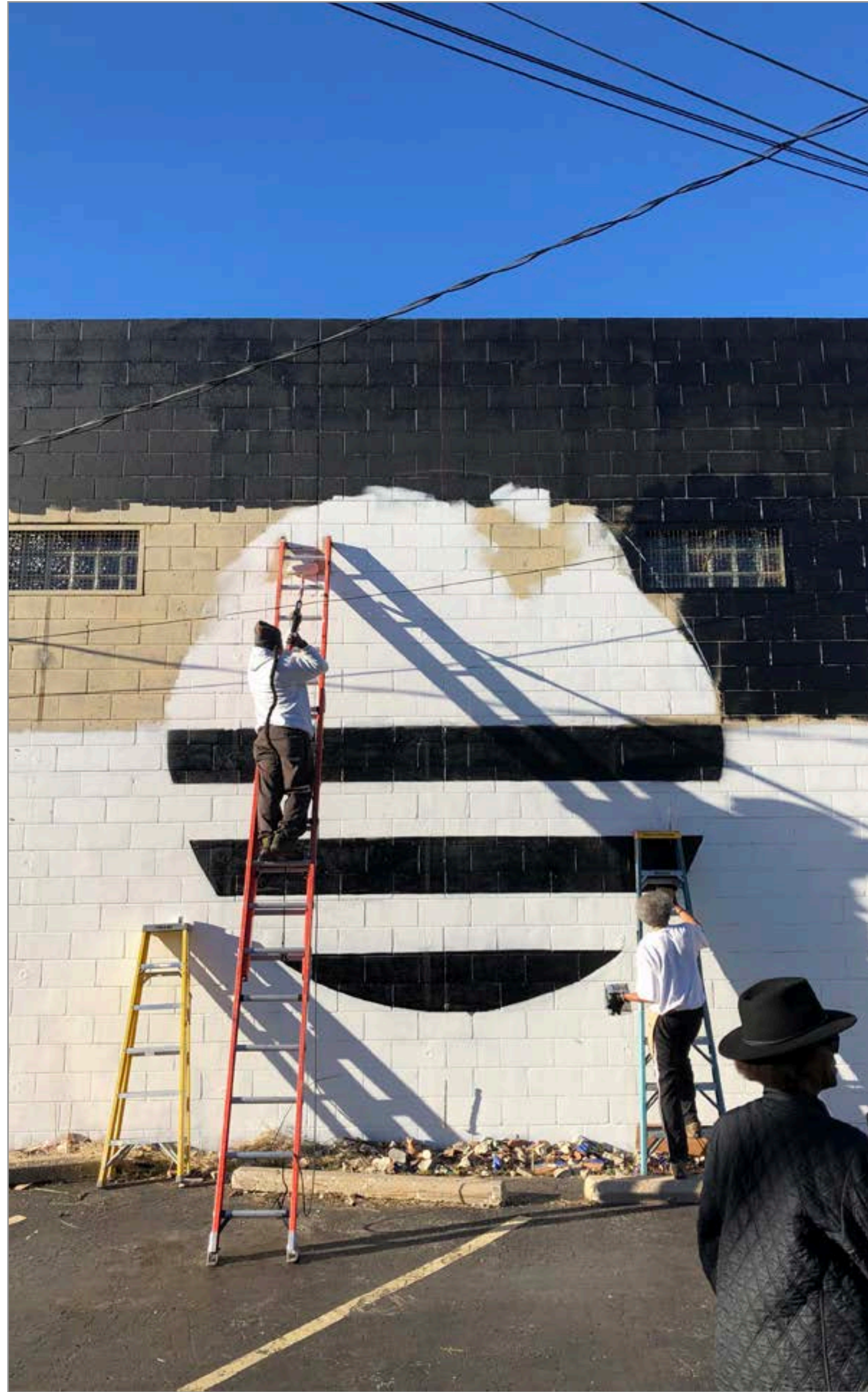


W
E
L
C
O
M
E



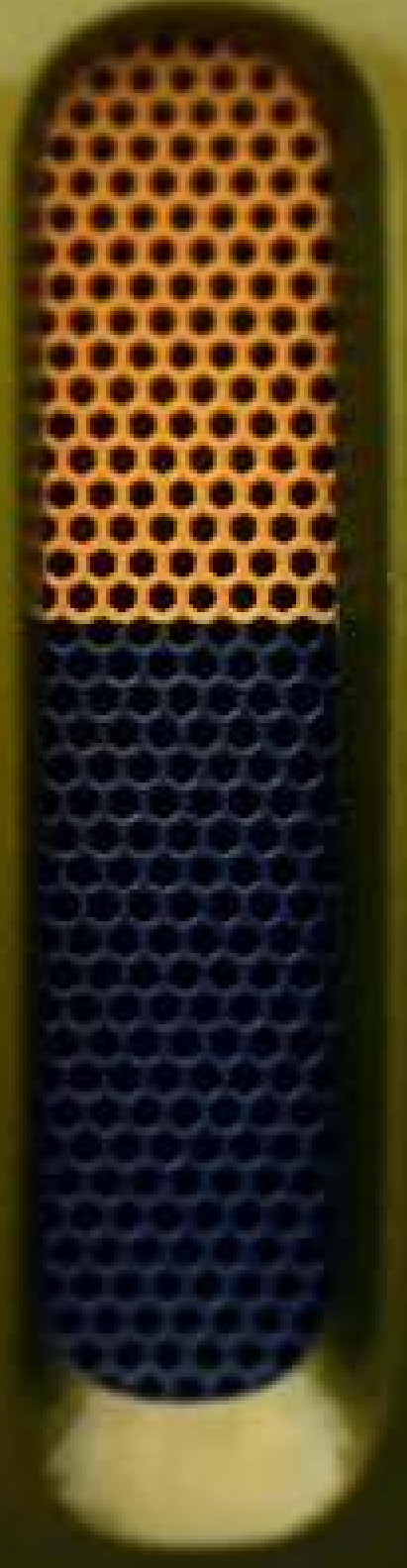
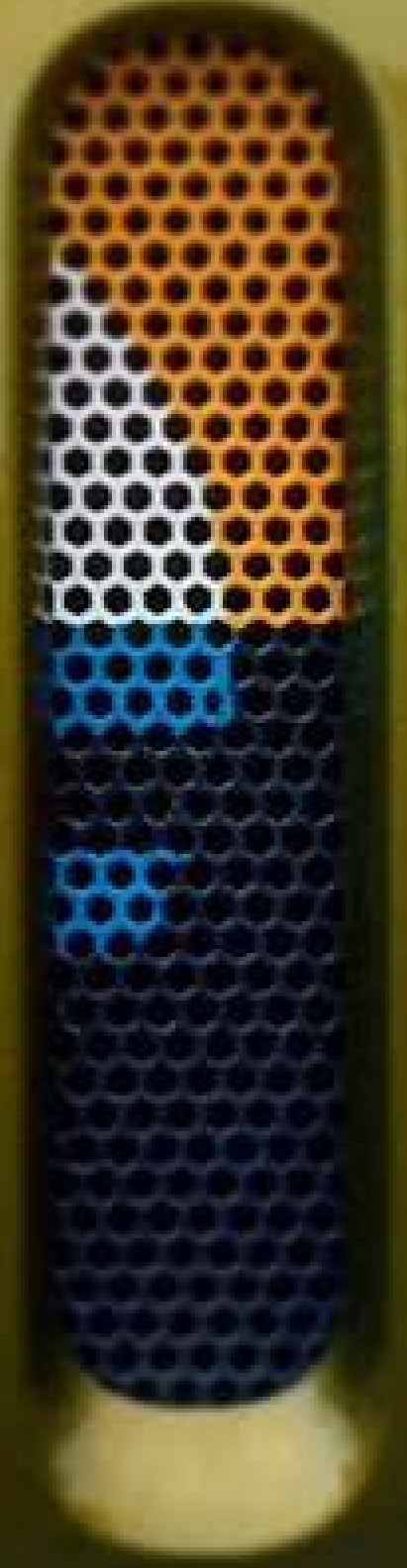
HARAMBEE







Jeep









MKE WATER TAXI
www.WaterTaxiMKE.com
MKE
MKE
MKE

Missy Harbor

ASQ







שבת

שקט























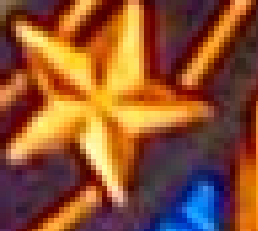
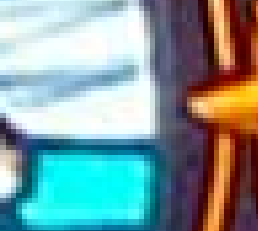




WILSON

1846

1846





Thank you.