

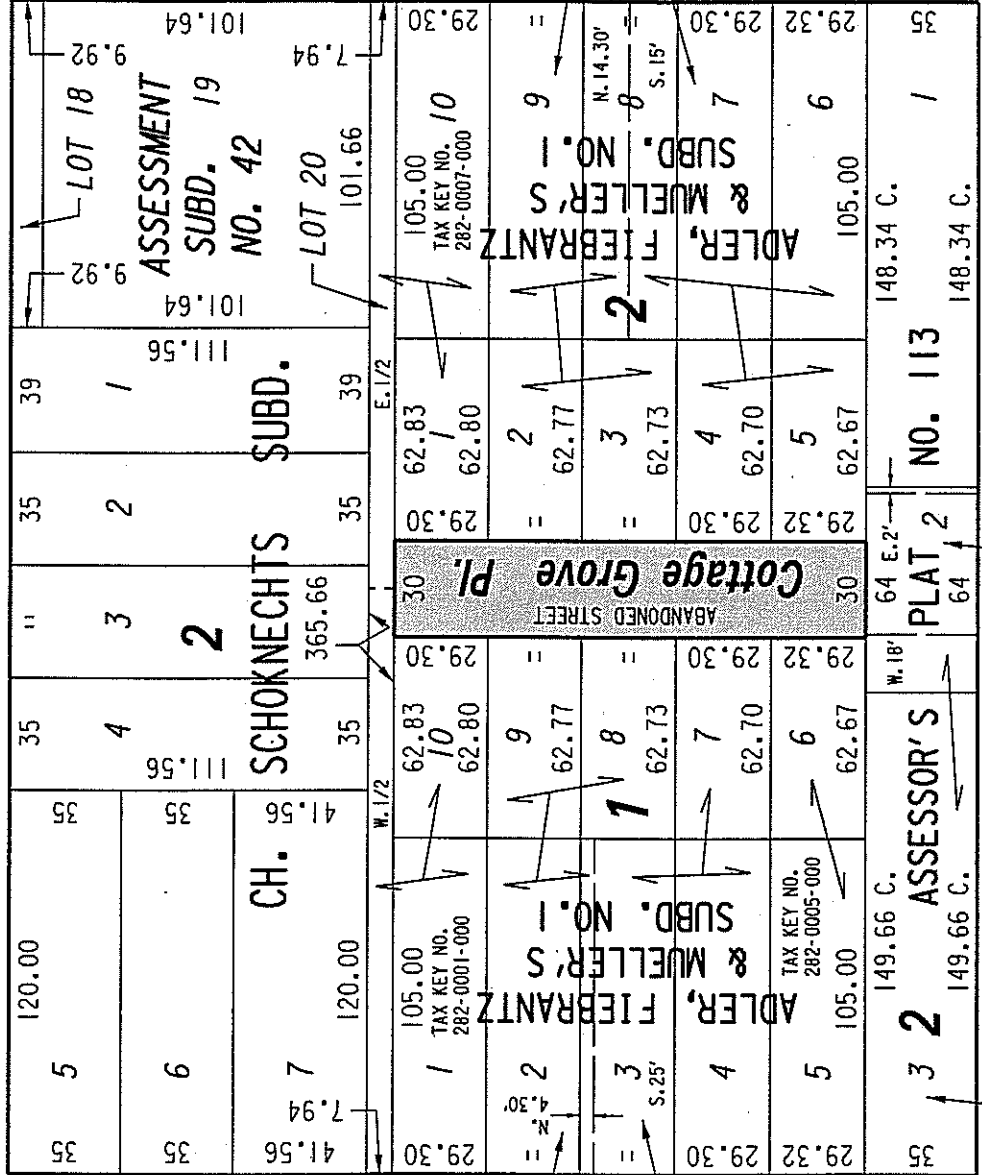
282

S.E. 1/4 SEC. 8, T.7N., R.22E.

W. Randolph St.

St.

(50' R.O.W.)



W. Townsend St.

St.

(56.63' R.O.W.)

PUBLIC STREET PROPOSED TO BE VACATED

EXHIBIT "A"
 FILE NO. 071397

INFRASTRUCTURE SERVICES DIVISION
 MILWAUKEE, WISCONSIN

ASSIGNED TO: W.E. FUCHS
 DRAWN BY: W.E.F.
 PROJECT/GRANT NO.: WK52337256
 APPROVED BY:
 CH'K'D. BY: W.E. FUCHS
 DATE: FEB. 1, 2008
 SCALE: 1" = 60'

Maicia Lindhoffer
 CENTRAL DRAFTING & RECORDS MANAGER

W.E. Fuchs
 CIVIL ENGINEER