

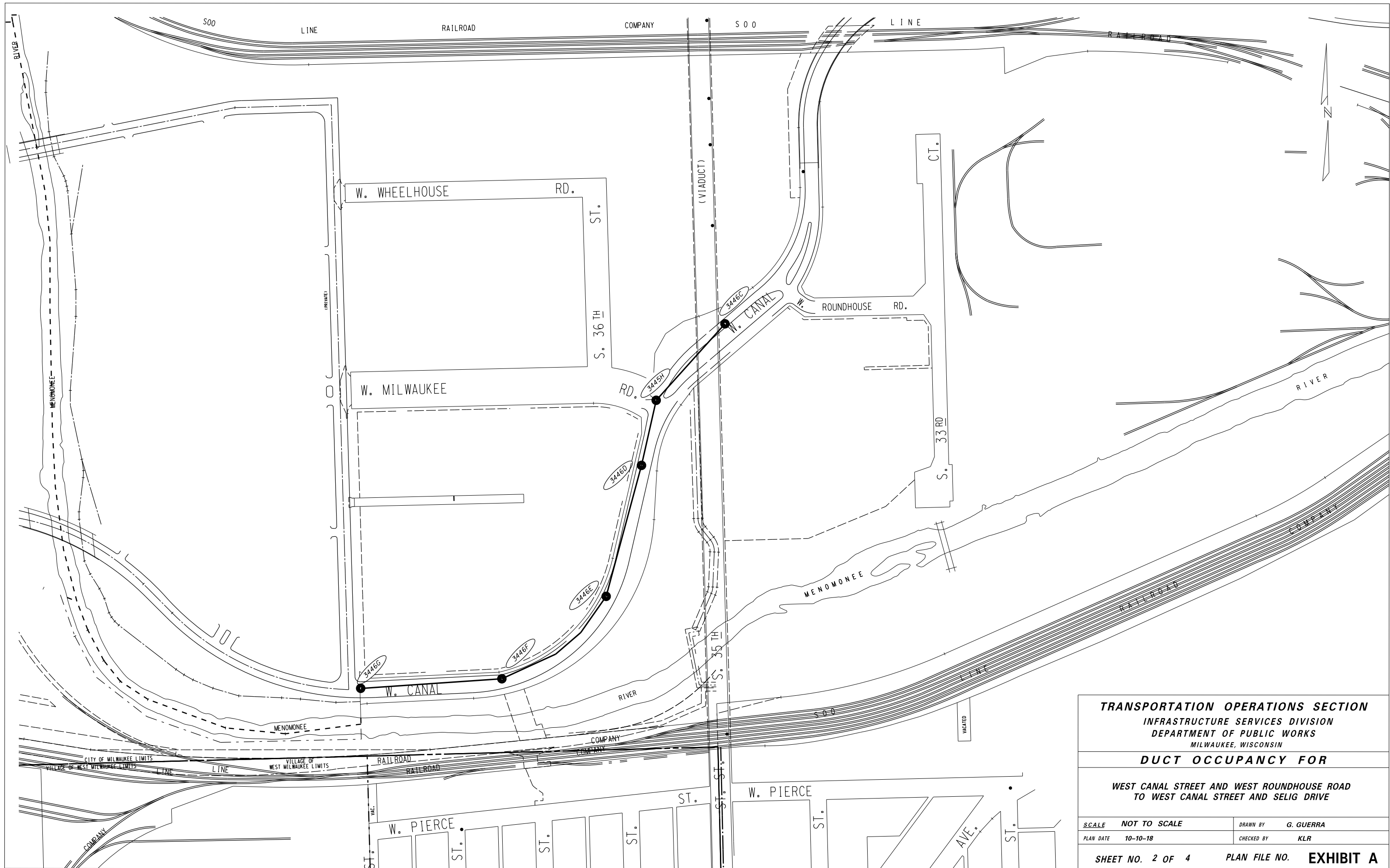
CITY UNDERGROUND CONDUIT
 TRANSPORTATION INFRASTRUCTURE
 DEPARTMENT OF PUBLIC WORKS
 MILWAUKEE, WISCONSIN

DUCT OCCUPANCY FOR

**WEST NATIONAL AVENUE AT NORTH 35TH STREET TO
 WEST MT. VERNON AVENUE AT NORTH 34TH STREET**

SCALE NOT TO SCALE	DRAWN BY G. GUERRA
PLAN DATE 10-10-18	CHECKED BY KLR

SHEET NO. 1 OF 4 PLAN FILE NO. EXHIBIT A



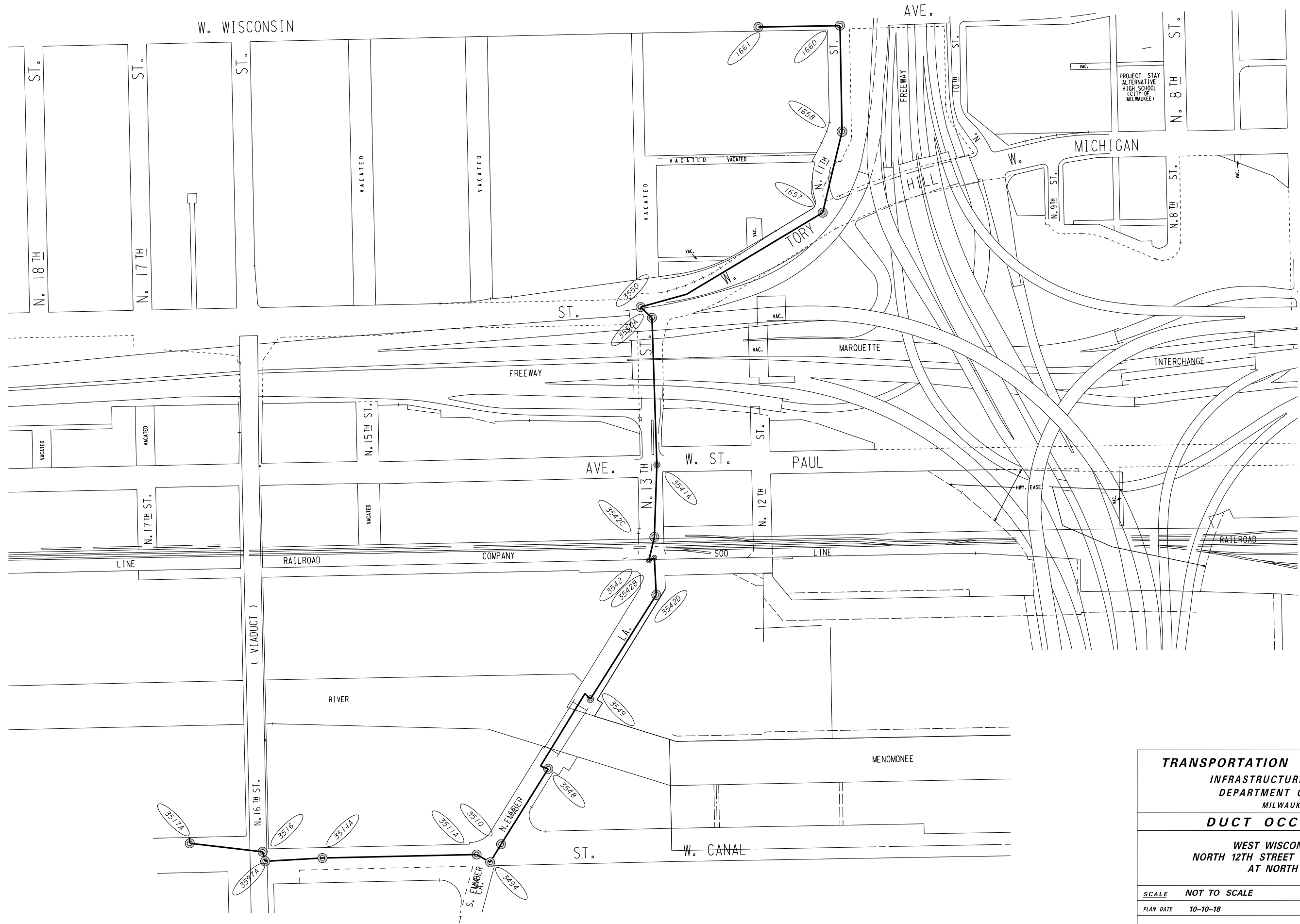
TRANSPORTATION OPERATIONS SECTION
INFRASTRUCTURE SERVICES DIVISION
DEPARTMENT OF PUBLIC WORKS
 MILWAUKEE, WISCONSIN

DUCT OCCUPANCY FOR

**WEST CANAL STREET AND WEST ROUNDHOUSE ROAD
 TO WEST CANAL STREET AND SELIG DRIVE**

SCALE NOT TO SCALE	DRAWN BY G. GUERRA
PLAN DATE 10-10-18	CHECKED BY KLR

SHEET NO. 2 OF 4 **PLAN FILE NO. EXHIBIT A**



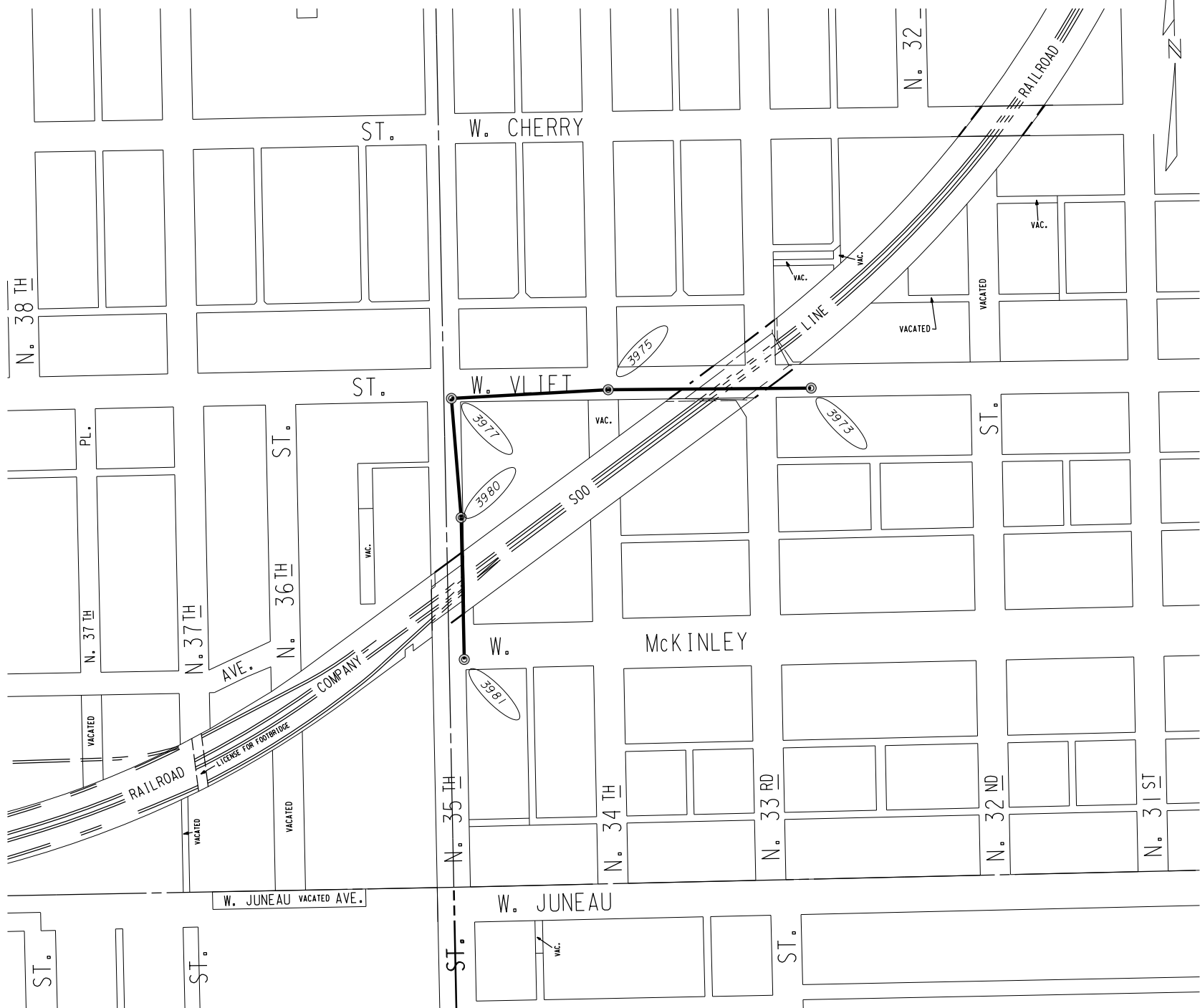
TRANSPORTATION OPERATIONS SECTION
INFRASTRUCTURE SERVICES DIVISION
DEPARTMENT OF PUBLIC WORKS
MILWAUKEE, WISCONSIN

DUCT OCCUPANCY FOR

WEST WISCONSIN AVENUE AT
NORTH 12TH STREET TO WEST CANAL STREET
AT NORTH 16TH STREET

SCALE NOT TO SCALE	DRAWN BY G. GUERRA
PLAN DATE 10-10-18	CHECKED BY KLR

SHEET NO. 3 OF 4 **PLAN FILE NO. EXHIBIT A**



TRANSPORTATION OPERATIONS SECTION
INFRASTRUCTURE SERVICES DIVISION
DEPARTMENT OF PUBLIC WORKS
MILWAUKEE, WISCONSIN

DUCT OCCUPANCY FOR
NORTH 33RD STREET AT WEST VLIET AVENUE
TO NORTH 35TH STREET AT
WEST MCKINLEY BLVD.

SCALE	NOT TO SCALE	DRAWN BY	G. GUERRA
PLAN DATE	10-10-18	CHECKED BY	KLR