



# Certificate of Appropriateness

Milwaukee Historic Preservation Commission/841 N Broadway/Milwaukee, WI 53202/phone 414-286-5722

## Property Description of work

### **2569 N. Wahl Ave., North Point North Historic District**

Landscaping improvements in the front yard, including repaving the driveway, removing the front walkway and installing bluestone walk on same footprint, and new lawn planting per the attached landscape plan.

## Date issued 7/24/2025

In accordance with the provisions of Section 320-21 (11) and (12) of the Milwaukee Code of Ordinances, the Milwaukee Historic Preservation Commission has issued a certificate of appropriateness for the work listed above. The work was found to be consistent with preservation guidelines. The following conditions apply to this certificate of appropriateness:

N/A

All work must be done in a craftsman-like manner. Staff must approve any changes or additions to this certificate before work begins. Work that is not completed in accordance with this certificate may be subject to correction orders or citations. If you require technical assistance, please contact Historic Preservation staff as follows: Phone: (414) 286-5722 E-mail: [hpc@milwaukee.gov](mailto:hpc@milwaukee.gov).

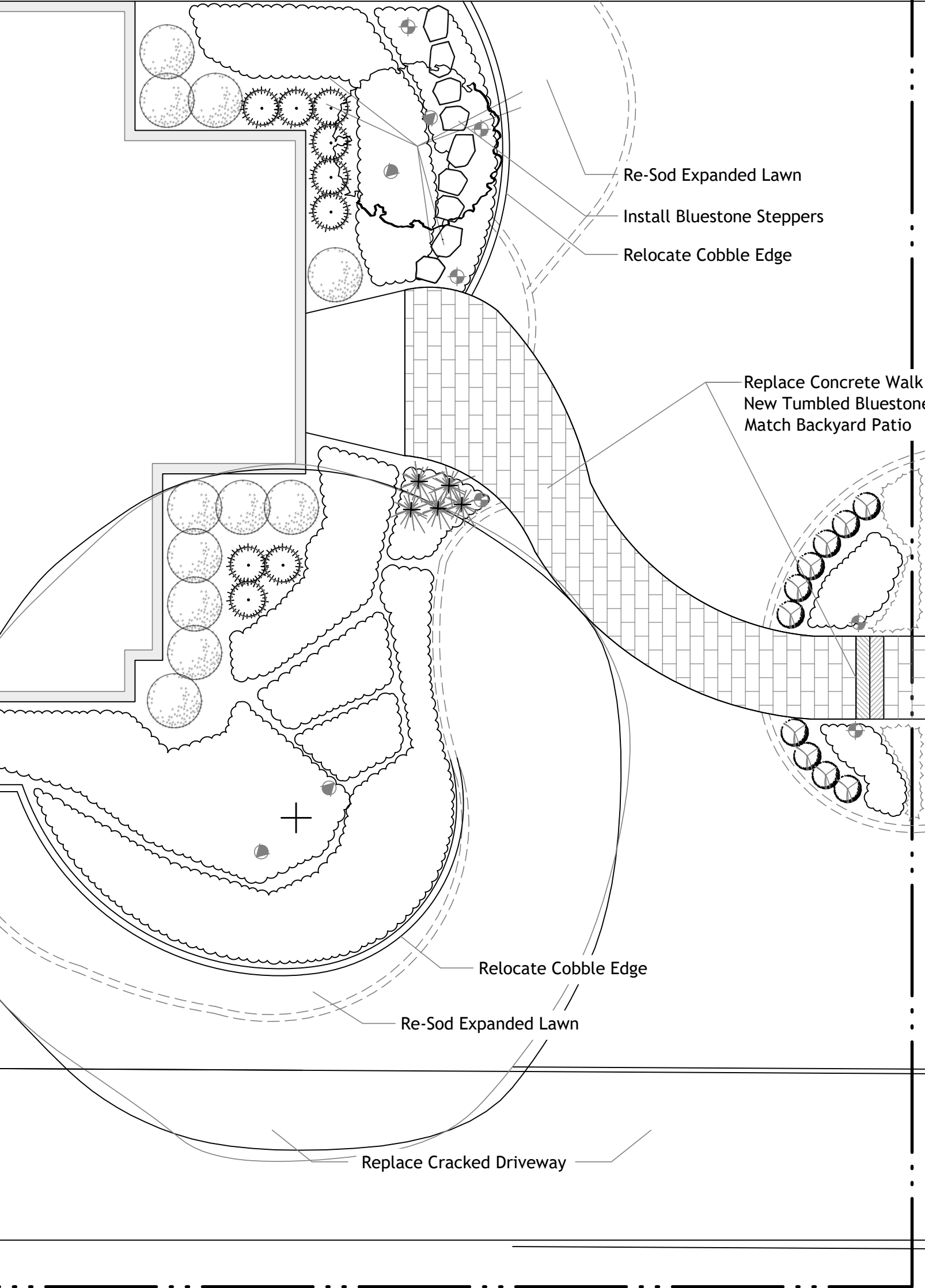
## Permits and timeline

You are responsible for determining if permits are required and obtaining them prior to commencing work. Consult the Development Center on the web or by telephone for details: [www.milwaukee.gov/lms](http://www.milwaukee.gov/lms) - (414) 286-8210. If permits are not required, work must be completed within one year of the date this certificate was issued. If permits are required, permits must be obtained within one year of the date this certificate was issued.

City of Milwaukee Historic Preservation

Copies to: Development Center

**LANDSCAPE PLAN TO FOLLOW**



Re-Sod Expanded Lawn

Install Bluestone Steppers

Relocate Cobble Edge

Replace Concrete Walk & Steps w/  
New Tumbled Bluestone Planks to  
Match Backyard Patio

Relocate Cobble Edge

Re-Sod Expanded Lawn

Replace Cracked Driveway

