

2742 W. State St.

Charles Gezelschap House

Application for Certificate of Historical Appropriateness:

South Face 2nd Floor Exterior Restoration



area of focus



Corbels, frieze,
mouldings
prepped.
Prime + paint



steel roof replaced



all painted
surfaces scraped +
sanded + caulked/filled
prime + paint

Trim boards replaced
Same profiles + proportions







Lower panels
and trim replaced
prime + paint





Replace old
storms with new
wood frame storms

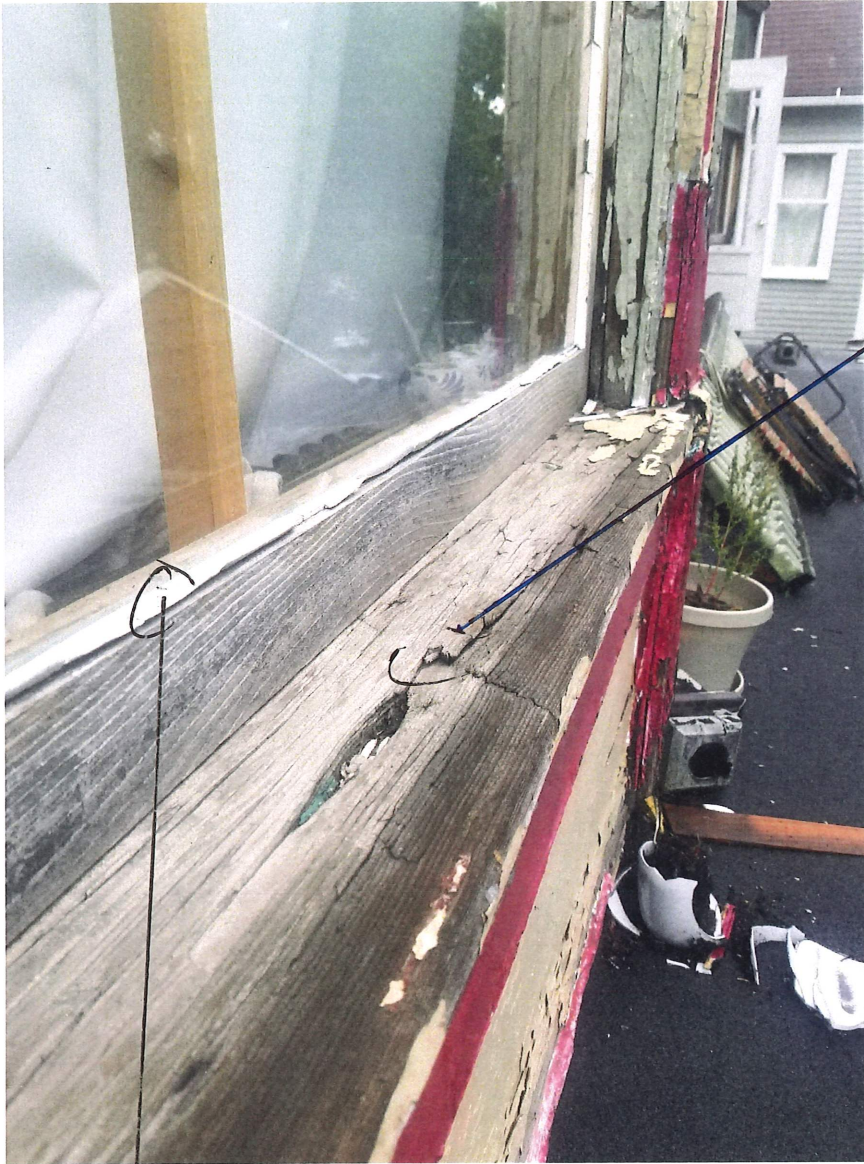


corner boards
Repaired and/or
Replaced





Window glass +
frames repaired
and/or replaced



Repair, prime, paint Sill

Reglaze, prime, paint sash



Siding Scraped,
cleaned, repaired
Prime + paint



Repair oval window/trim
if possible. Otherwise
replace with matching
details





Replace trim
With historically
accurate profiles
and proportions:
based on existing
Trim and historical
photographs

prime + paint

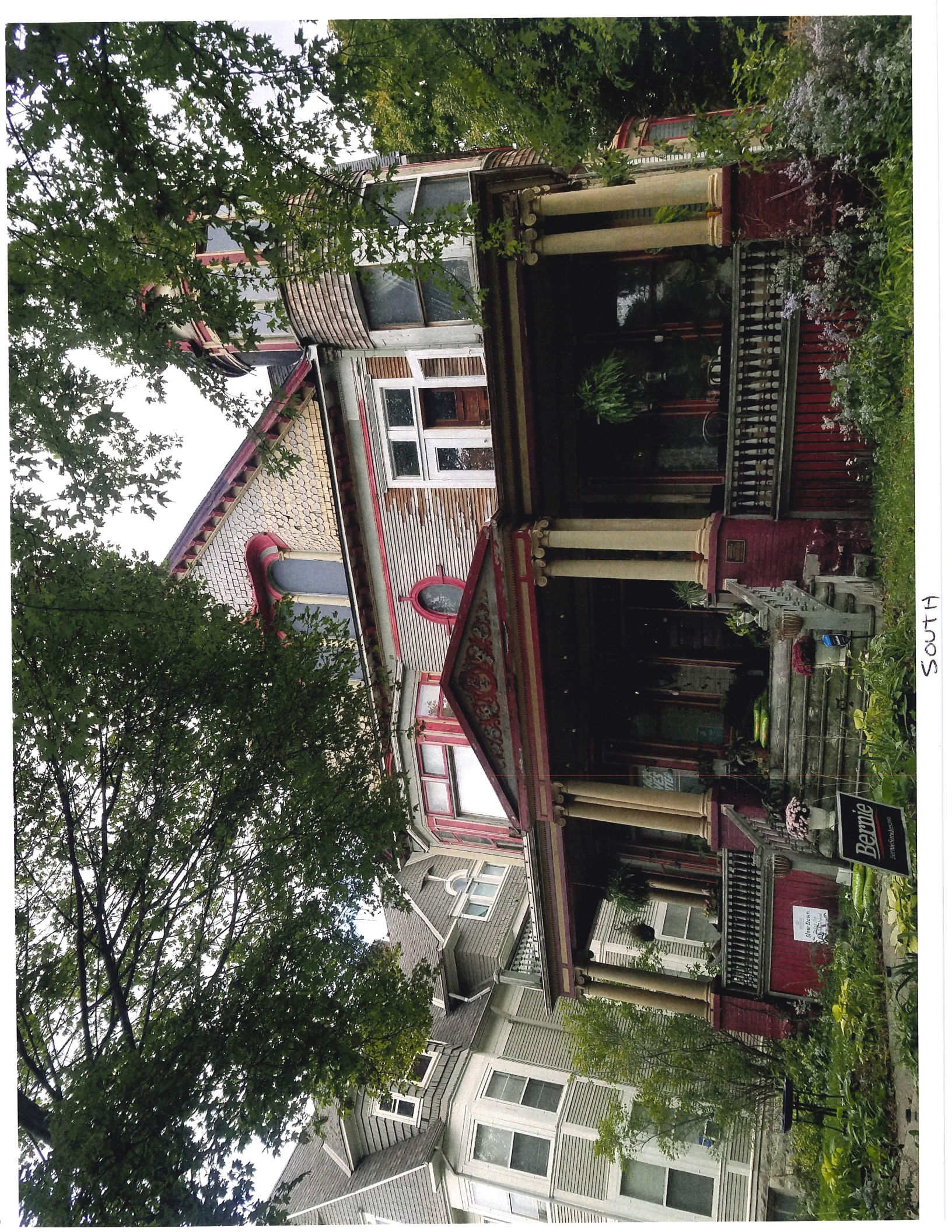


Refinish exterior
entry doors





Repair/patch
storm doors.
prime + paint



SOUTH

Bernie
REALTY GROUP

Slow Down
No Pedestrians

EAST



WEST



NORTH

