

391

392

N.E. 1/4 SEC. 29, T.7N., R.22E.

N.W. 1/4 SEC. 29, T.7N., R.22E.

W. Juneau

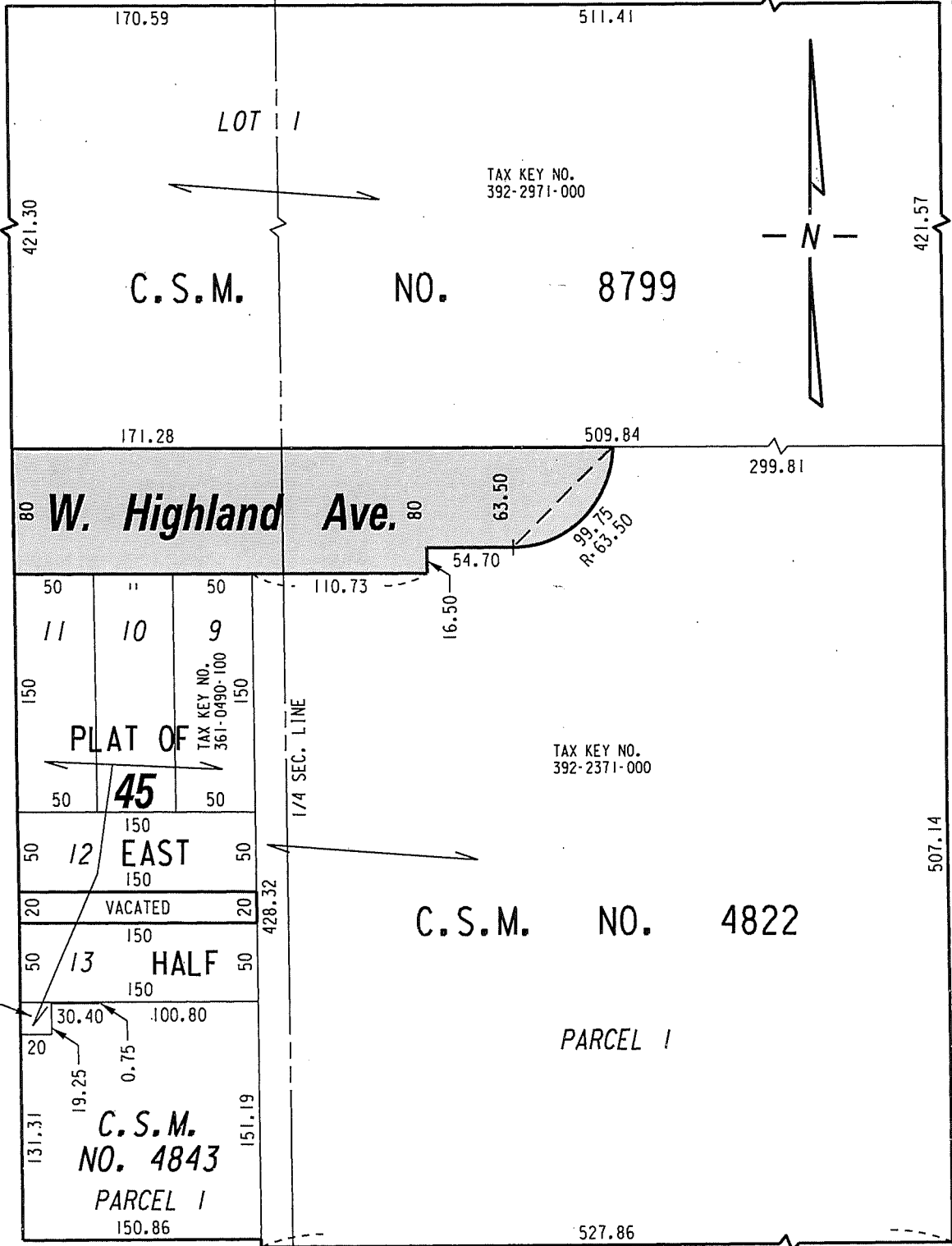
SEC. LINE

Ave.

(R.O.W. VARIES)

St.

St.



W. State

(R.O.W. VARIES)

St.

N. 6th

N. 4th

 PUBLIC STREET
PROPOSED TO
BE VACATED

EXHIBIT "A"

FILE NO. 180166

INFRASTRUCTURE SERVICES DIVISION

MILWAUKEE, WISCONSIN

ASSIGNED TO: W. FUCHS

CH'K'D. BY: W. FUCHS

DRAWN BY: W.F.

DATE: MAY 29, 2018

PROJECT/GRANT NO.: WK52337414

SCALE: 1" = 100'

APPROVED BY:

W. Fuchs

[Signature]