

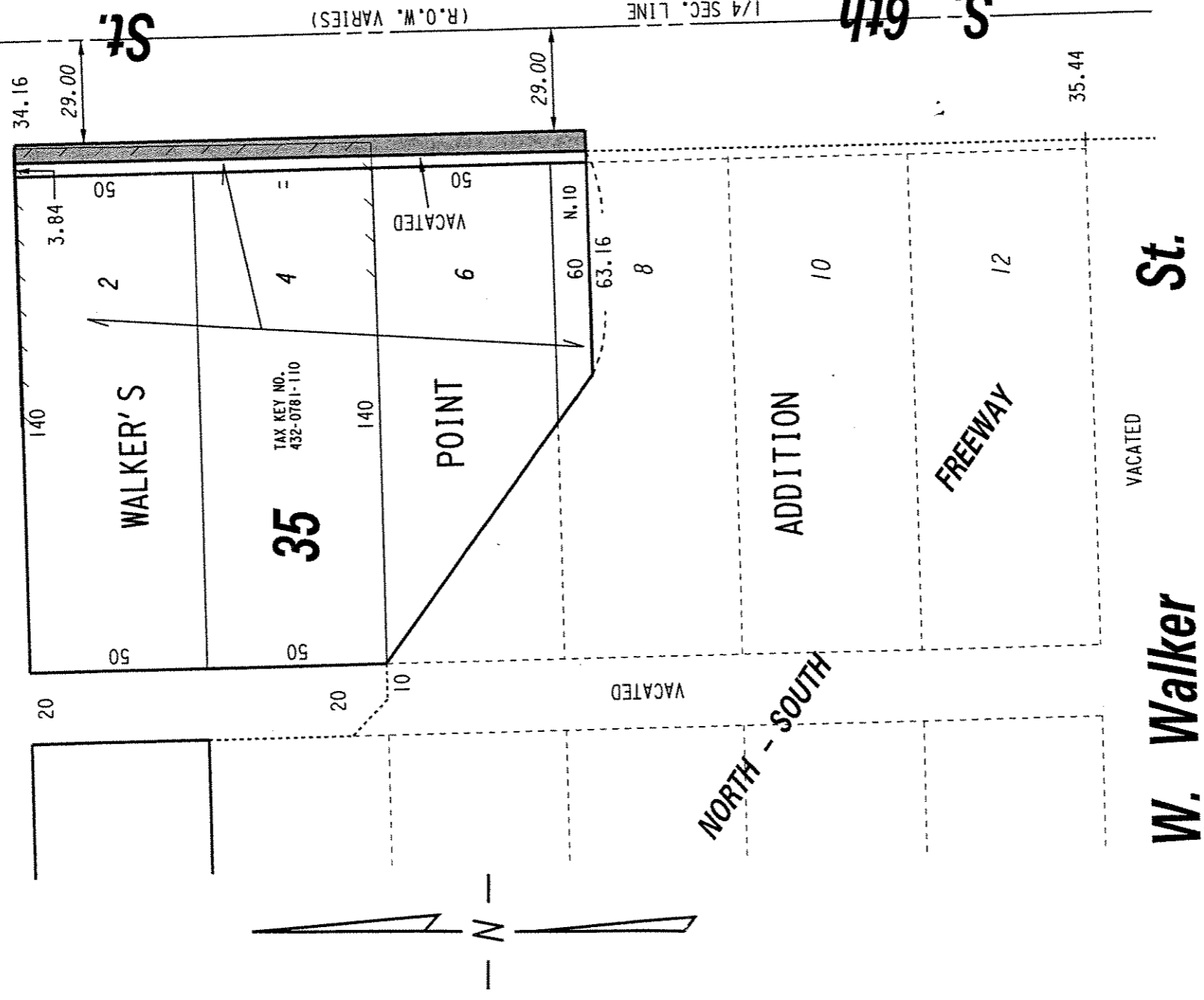
432

S.W. 1/4 SEC. 32, T.7N., R.22E.

W. National Ave.

(76' R.O.W.)

Ave.



PORTION OF PUBLIC STREET PROPOSED TO BE VACATED

EXHIBIT "A"  
FILE NO. 050941

INFRASTRUCTURE SERVICES DIVISION

MILWAUKEE, WISCONSIN

ASSIGNED TO: P.A. VELLA  
DRAWN BY: P.A.V.  
PROJECT/GRANT NO.: WK52337223  
APPROVED BY:

CH'K'D. BY: W.E. FUCHS  
DATE: MARCH 2, 2006  
SCALE: 1" = 40'

*Maxine Lindholm*  
CENTRAL DRAFTING & RECORDS MANAGER

*W. E. Fuchs*  
CITY ENGINEER