



MILWAUKEE  
HISTORIC  
PRESERVATION  
COMMISSION

LIVING WITH HISTORY

## Certificate of Appropriateness

Milwaukee Historic Preservation Commission/200 E. Wells Street/Milwaukee, WI 53202/phone 414-286-5712/fax 414-286-3004

<b>Property</b>	<b>2580 N. DOWNER AV.</b>	<b>North Downer Avenue Historic District</b>
<b>Description of work</b>	Install louver for venting in storefront behind existing awning.	
<b>Date issued</b>	6/13/2014	PTS ID 94800 COA - Outside air louver at front

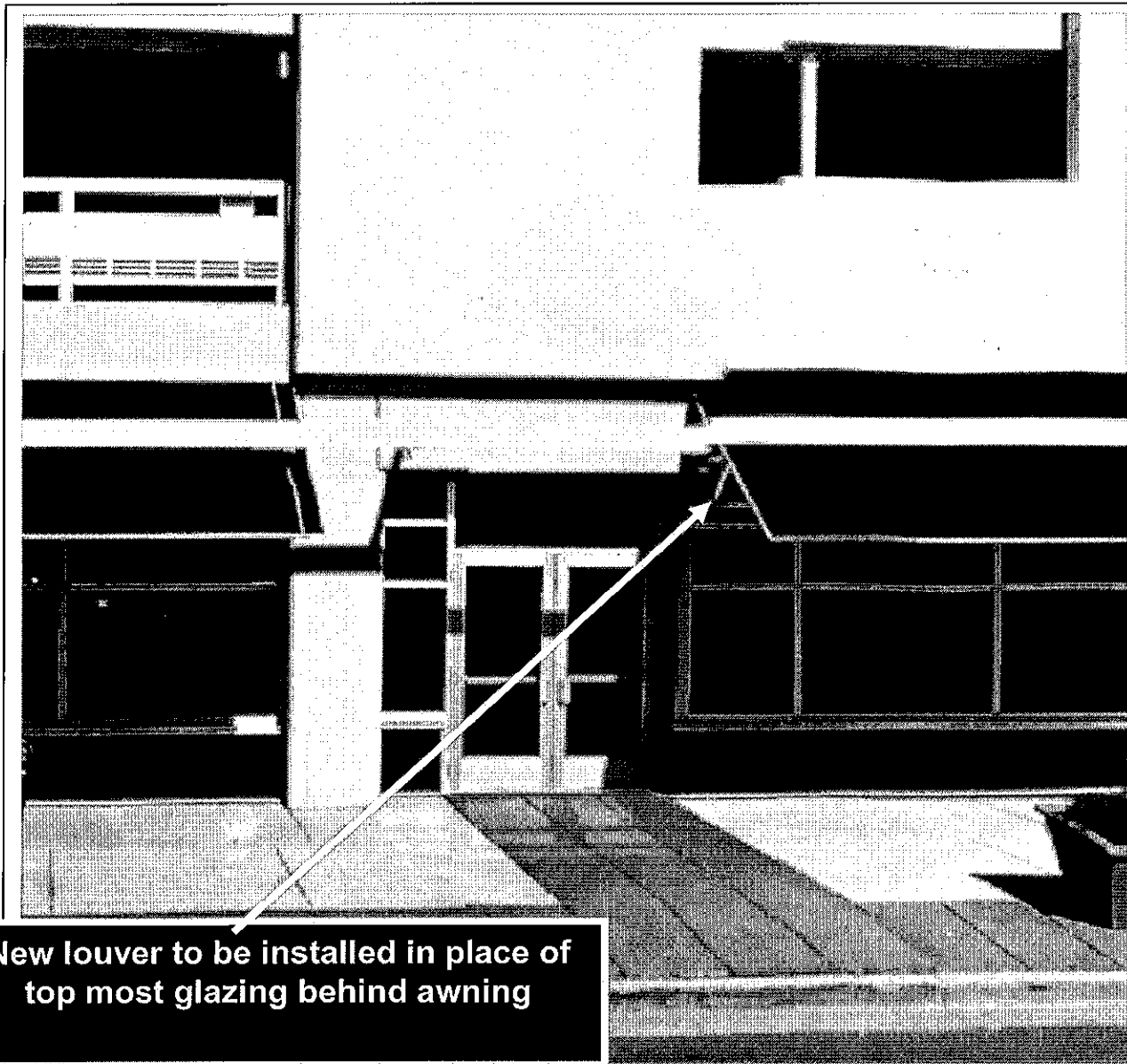
In accordance with the provisions of Section 320-21 (11) and (12) of the Milwaukee Code of Ordinances, the Milwaukee Historic Preservation Commission has issued a certificate of appropriateness for the work listed above. The work was found to be consistent with preservation guidelines. The following conditions apply to this certificate of appropriateness:

All work will be done according to the illustrations and specifications contained in this COA. Louver must be painted out to blend with the color of the surrounding building materials. **PRIOR TO ANY PERMITS BEING ISSUED THIS WORK REQUIRES AN AMENDMENT TO THE DETAIL PLAN DEVELOPMENT FOR THE DISTRICT.**

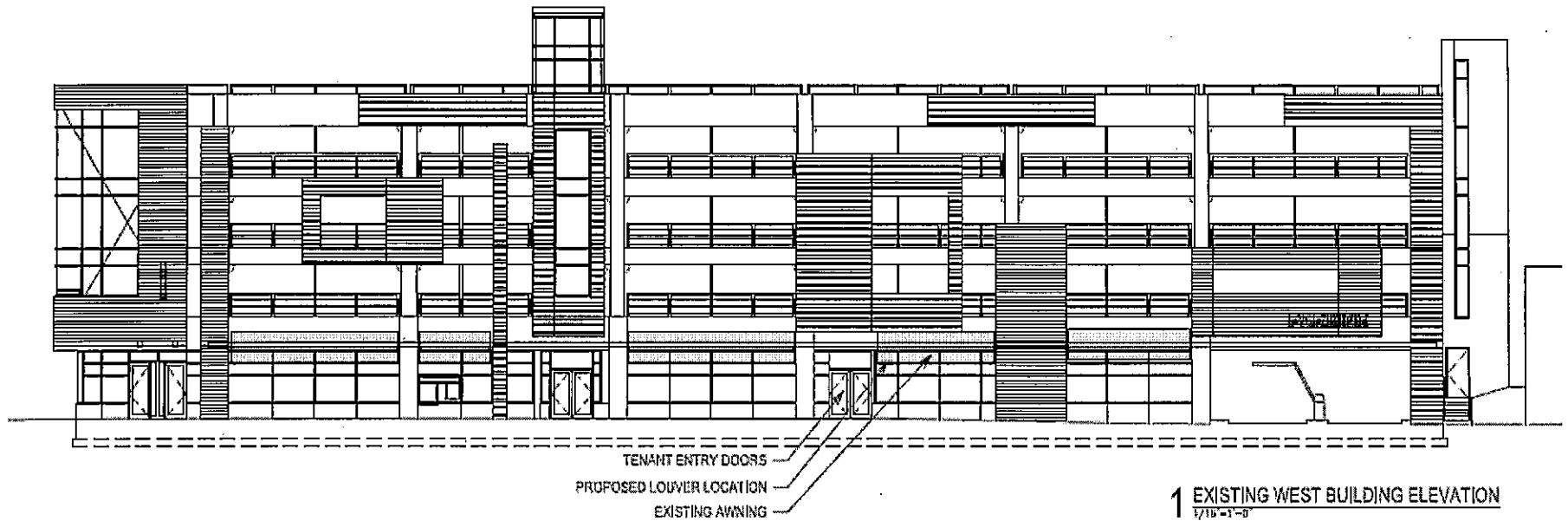
All work must be done in a craftsman-like manner, and must be completed within one year of the date this certificate was issued. Staff must approve any changes or additions to this certificate before work begins. Work that is not completed in accordance with this certificate may be subject to correction orders or citations. If you require technical assistance, please contact Paul Jakubovich of the Historic Preservation staff as follows: Phone: (414) 286-5712 Fax: (414) 286-3004 E-mail: [pjakub@milwaukee.gov](mailto:pjakub@milwaukee.gov). If permits are required, you are responsible for obtaining them from the Milwaukee Development Center. If you have questions about permit requirements, please consult the Development Center's web site, [www.milwaukee.gov/build](http://www.milwaukee.gov/build), or call (414) 286-8210.

City of Milwaukee Historic Preservation

Copies to: Development Center, Ald. Nik Kovac, Rinka/Chung, Inspector Bill Richter (286-2518), Inspector Heidi Weed, Katie Schwartz



**New louver to be installed in place of  
top most glazing behind awning**



**Downer Avenue Elevation showing location of new vent.**

## ELF6375DX and ELF6375DXH DRAINABLE STATIONARY LOUVERS

### EXTRUDED ALUMINUM LOUVER

#### STANDARD CONSTRUCTION

##### FRAME

6" (152) deep, 6063T5 extruded aluminum. ELF6375DX - .081" (2.1) nominal wall thickness. ELF6375DXH - .125" (3.2) nominal wall thickness. Downspouts and caulking surfaces provided.

##### BLADES

6063T5 extruded aluminum. ELF6375DX - .081" (2.1) nominal wall thickness. ELF6375DXH - .125" (3.2) nominal wall thickness. Drainable blades are positioned at a 37 1/2° angle and spaced approximately 5 1/4" (130) center to center.

##### SCREEN

3/4" x .051" (19 x 1.3) expanded, flattened aluminum bird screen in removable frame. Screen adds approximately 1/2" (13) to louver depth.

##### FINISH

Mil.

##### MINIMUM SIZE

12" w x 12" h (305 x 305).

##### APPROXIMATE SHIPPING WEIGHT

ELF6375DX - 4 lbs./ft.<sup>2</sup> (19.5 kg/m<sup>2</sup>)  
 ELF6375DXH - 6 lbs./ft.<sup>2</sup> (29.3 kg/m<sup>2</sup>)

##### MAXIMUM FACTORY ASSEMBLY SIZE

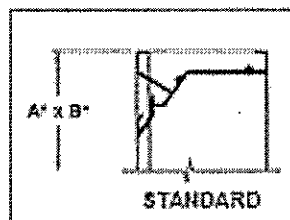
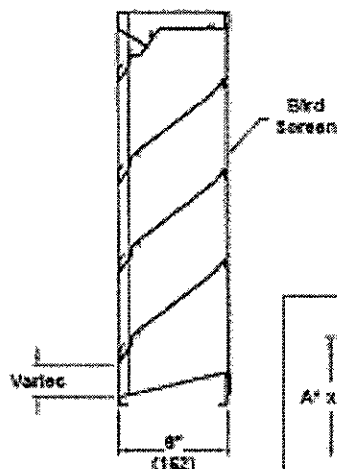
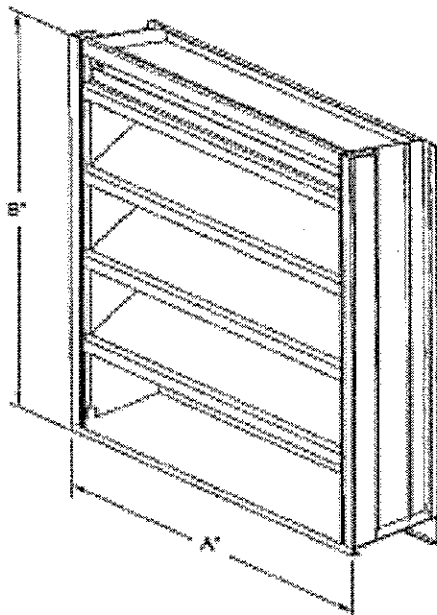
Shall be 75 sq. ft. (7m<sup>2</sup>) per section, not to exceed 120" w x 90" h (3048 x 2286) or 90" w x 120" h (2286 x 3048).

Louvers larger than the maximum factory assembly size will require field assembly of smaller sections.

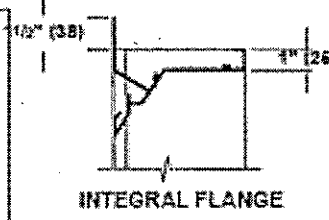
##### SUPPORTS

Louvers may be provided with rear mounted blade supports that increase overall louver depth depending on louver size, assembly configuration or windload.

Consult Ruskin for additional information.



STANDARD



INTEGRAL FLANGE

#### FEATURES

The ELF6375DX and ELF6375DXH offers:

- 57% Free Area.
- Published performance ratings based on testing in accordance with AMCA Publication 511.
- High performance frame system with drainable head collects and removes water to provide excellent water penetration performance.
- Drain gutter in each blade minimizes water cascade between blades.
- Architecturally styled, hidden mullions allowing continuous line appearance up to 120" (3048).
- Aluminum construction for low maintenance and high resistance to corrosion.
- All welded construction.

#### VARIATIONS

Variations to the basic design of these louvers are available at additional cost. They include:

- Extended sill.
- Hinged frame.
- Front or rear security bars.
- Filter racks.
- A variety of bird and insect screens.
- Selection of finishes: prime coat, baked enamel (modified fluoropolymer), epoxy, Acrodize, Kymar, clear and color anodize. (Some variation in anodize color consistency is possible.)

Consult Ruskin for other special requirements.

#### FRAME CONSTRUCTION

\*Units furnished 1/4" (6) smaller than given opening dimensions.

Dimensions in inches, parenthesis ( ) indicate millimeters.