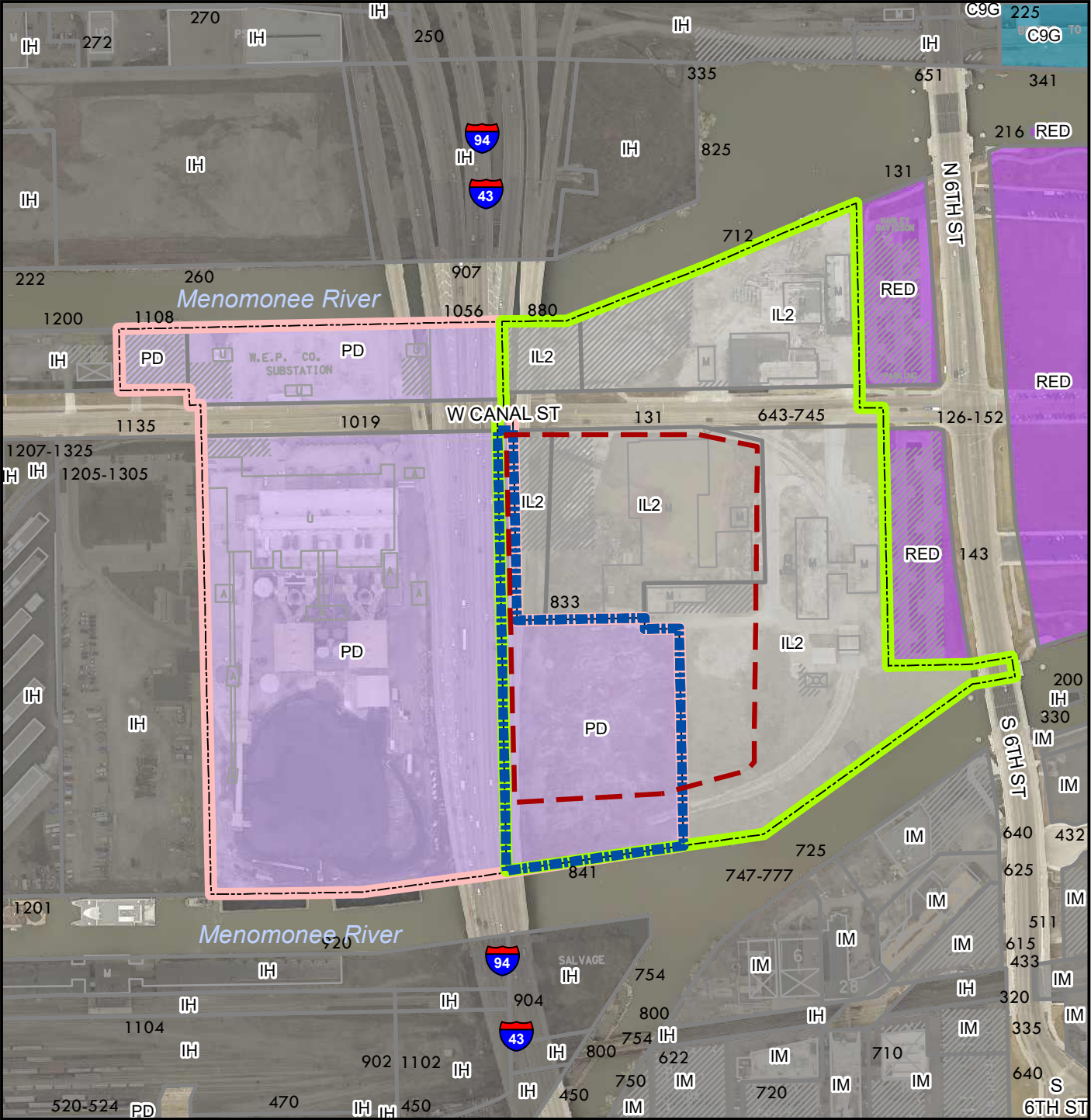


**Files No. 211866 and 220063
 2nd Amend. to DPD - Valley Power Plant
 & Rezone 841 W. Canal from DPD to IL2
 & Deviation from East End Menomonee
 Valley DIZ Overlay**



Legend

- 841 W. Canal St
- Generalized Area of Development
- East Menomonee Valley Development Incentive Zone Boundary
- Detailed Planned Development Boundary (DPD)

Zoning Category

- Residential - single family
- Residential - two family
- Residential - multi-family
- Residential - residence and office
- Central business district - civic activity
- Central business district - high-density residential
- Central business district - major retail
- Central business district - mixed activity
- Central business district - neighborhood retail
- Central business district - office and service
- Central business district - residential and specialty use
- Central business district - warehousing and light manufacturing
- Commercial - neighborhood shopping
- Commercial - local business
- Commercial - commercial service
- Commercial - regional business
- Industrial - commercial
- Industrial - office
- Industrial - light
- Industrial - mixed
- Industrial - heavy
- Special - parks
- Special - institutional
- Special - planned development
- Special - redevelopment district

