

# CERTIFIED SURVEY MAP NO.

Part of Lot 5 and all of Lots 8, 9, 12, 13 and 16, part of a vacated alley and part of vacated North 2nd Street all in Block 60 in The Plat of the Town of Milwaukee on the West side of the River, being a part of the Southwest 1/4 and Southeast 1/4 of the Northeast 1/4 of Section 29, Town 7 North, Range 22 East, in the City of Milwaukee, Milwaukee County, Wisconsin.

Site is zoned: C9E

## VICINITY MAP

NE 1/4 SEC. 29, T7N, R22E.  
EAST/WEST JUNEAU AVE.



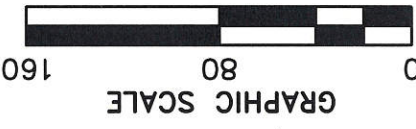
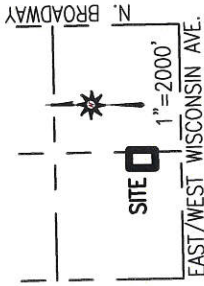
Revised August 2, 2018

Owner: TNSH Landlord, LLC  
833 East Michigan Street  
Milwaukee, WI 53202

Bearings are referenced to the South line of the Northeast 1/4 of Section 29, which bears South 89°42'15" West. SET CROSS EXACT

Tax Key No.'s: 361-0658-000 & 361-0660-000  
Part of 361-0652-100 & 361-0655-100

W. WELLS ST.



1" = 80'

OLD WORLD THIRD STREET

80' PUBLIC R.O.W.

20' PUBLIC ALLEY

ON THE LOT 7 BUILDING

LOT 10 BUILDING

LOT 11 BUILDING

LOT 14 BUILDING

LOT 15 BUILDING

LOT 1 BUILDING

LOT 4 (VACATED)

LOT 5 (VACATED)

LOT 16 (VACATED)

LOT 17 (VACATED)

LOT 18 (VACATED)

LOT 19 (VACATED)

LOT 20 (VACATED)

LOT 21 (VACATED)

LOT 22 (VACATED)

LOT 23 (VACATED)

LOT 24 (VACATED)

LOT 25 (VACATED)

LOT 26 (VACATED)

LOT 27 (VACATED)

LOT 28 (VACATED)

LOT 29 (VACATED)

LOT 30 (VACATED)

LOT 31 (VACATED)

LOT 32 (VACATED)

LOT 33 (VACATED)

LOT 34 (VACATED)

LOT 35 (VACATED)

LOT 36 (VACATED)

LOT 37 (VACATED)

LOT 38 (VACATED)

LOT 39 (VACATED)

LOT 40 (VACATED)

LOT 41 (VACATED)

LOT 42 (VACATED)

LOT 43 (VACATED)

LOT 44 (VACATED)

LOT 45 (VACATED)

LOT 46 (VACATED)

LOT 47 (VACATED)

LOT 48 (VACATED)

LOT 49 (VACATED)

LOT 50 (VACATED)

LOT 51 (VACATED)

LOT 52 (VACATED)

LOT 53 (VACATED)

LOT 54 (VACATED)

LOT 55 (VACATED)

LOT 56 (VACATED)

LOT 57 (VACATED)

LOT 58 (VACATED)

LOT 59 (VACATED)

LOT 60 (VACATED)

LOT 61 (VACATED)

LOT 62 (VACATED)

LOT 63 (VACATED)

LOT 64 (VACATED)

LOT 65 (VACATED)

LOT 66 (VACATED)

LOT 67 (VACATED)

LOT 68 (VACATED)

LOT 69 (VACATED)

LOT 70 (VACATED)

LOT 71 (VACATED)

LOT 72 (VACATED)

LOT 73 (VACATED)

LOT 74 (VACATED)

LOT 75 (VACATED)

LOT 76 (VACATED)

LOT 77 (VACATED)

LOT 78 (VACATED)

LOT 79 (VACATED)

LOT 80 (VACATED)

LOT 81 (VACATED)

LOT 82 (VACATED)

LOT 83 (VACATED)

LOT 84 (VACATED)

LOT 85 (VACATED)

LOT 86 (VACATED)

LOT 87 (VACATED)

LOT 88 (VACATED)

LOT 89 (VACATED)

LOT 90 (VACATED)

LOT 91 (VACATED)

LOT 92 (VACATED)

LOT 93 (VACATED)

LOT 94 (VACATED)

LOT 95 (VACATED)

LOT 96 (VACATED)

LOT 97 (VACATED)

LOT 98 (VACATED)

LOT 99 (VACATED)

LOT 100 (VACATED)

LOT 101 (VACATED)

LOT 102 (VACATED)

LOT 103 (VACATED)

LOT 104 (VACATED)

LOT 105 (VACATED)

LOT 106 (VACATED)

LOT 107 (VACATED)

LOT 108 (VACATED)

LOT 109 (VACATED)

LOT 110 (VACATED)

LOT 111 (VACATED)

LOT 112 (VACATED)

LOT 113 (VACATED)

LOT 114 (VACATED)

LOT 115 (VACATED)

LOT 116 (VACATED)

LOT 117 (VACATED)

LOT 118 (VACATED)

LOT 119 (VACATED)

LOT 120 (VACATED)

LOT 121 (VACATED)

LOT 122 (VACATED)

LOT 123 (VACATED)

LOT 124 (VACATED)

LOT 125 (VACATED)

LOT 126 (VACATED)

LOT 127 (VACATED)

LOT 128 (VACATED)

LOT 129 (VACATED)

LOT 130 (VACATED)

LOT 131 (VACATED)

LOT 132 (VACATED)

LOT 133 (VACATED)

LOT 134 (VACATED)

LOT 135 (VACATED)

LOT 136 (VACATED)

LOT 137 (VACATED)

LOT 138 (VACATED)

LOT 139 (VACATED)

LOT 140 (VACATED)

LOT 141 (VACATED)

LOT 142 (VACATED)

LOT 143 (VACATED)

LOT 144 (VACATED)

LOT 145 (VACATED)

LOT 146 (VACATED)

LOT 147 (VACATED)

LOT 148 (VACATED)

LOT 149 (VACATED)

LOT 150 (VACATED)

LOT 151 (VACATED)

LOT 152 (VACATED)

LOT 153 (VACATED)

LOT 154 (VACATED)

LOT 155 (VACATED)

LOT 156 (VACATED)

LOT 157 (VACATED)

LOT 158 (VACATED)

LOT 159 (VACATED)

LOT 160 (VACATED)

LOT 161 (VACATED)

LOT 162 (VACATED)

LOT 163 (VACATED)

LOT 164 (VACATED)

LOT 165 (VACATED)

LOT 166 (VACATED)

LOT 167 (VACATED)

LOT 168 (VACATED)

LOT 169 (VACATED)

LOT 170 (VACATED)

LOT 171 (VACATED)

LOT 172 (VACATED)

LOT 173 (VACATED)

LOT 174 (VACATED)

LOT 175 (VACATED)

LOT 176 (VACATED)

LOT 177 (VACATED)

LOT 178 (VACATED)

LOT 179 (VACATED)

LOT 180 (VACATED)

LOT 181 (VACATED)

LOT 182 (VACATED)

LOT 183 (VACATED)

LOT 184 (VACATED)

LOT 185 (VACATED)

LOT 186 (VACATED)

LOT 187 (VACATED)

LOT 188 (VACATED)

LOT 189 (VACATED)

LOT 190 (VACATED)

LOT 191 (VACATED)

LOT 192 (VACATED)

LOT 193 (VACATED)

LOT 194 (VACATED)

LOT 195 (VACATED)

LOT 196 (VACATED)

LOT 197 (VACATED)

LOT 198 (VACATED)

LOT 199 (VACATED)

LOT 200 (VACATED)

LOT 201 (VACATED)

LOT 202 (VACATED)

LOT 203 (VACATED)

LOT 204 (VACATED)

LOT 205 (VACATED)

LOT 206 (VACATED)

LOT 207 (VACATED)

LOT 208 (VACATED)

LOT 209 (VACATED)

LOT 210 (VACATED)

LOT 211 (VACATED)

LOT 212 (VACATED)

LOT 213 (VACATED)

LOT 214 (VACATED)

LOT 215 (VACATED)

LOT 216 (VACATED)

LOT 217 (VACATED)

LOT 218 (VACATED)

LOT 219 (VACATED)

LOT 220 (VACATED)

LOT 221 (VACATED)

LOT 222 (VACATED)

LOT 223 (VACATED)

LOT 224 (VACATED)

LOT 225 (VACATED)

LOT 226 (VACATED)

LOT 227 (VACATED)

LOT 228 (VACATED)

LOT 229 (VACATED)

LOT 230 (VACATED)

LOT 231 (VACATED)

LOT 232 (VACATED)

LOT 233 (VACATED)

LOT 234 (VACATED)

LOT 235 (VACATED)

LOT 236 (VACATED)

LOT 237 (VACATED)

LOT 238 (VACATED)

LOT 239 (VACATED)

LOT 240 (VACATED)

LOT 241 (VACATED)

LOT 242 (VACATED)

LOT 243 (VACATED)

LOT 244 (VACATED)

LOT 245 (VACATED)

LOT 246 (VACATED)

LOT 247 (VACATED)

LOT 248 (VACATED)

LOT 249 (VACATED)

LOT 250 (VACATED)

LOT 251 (VACATED)

LOT 252 (VACATED)

LOT 253 (VACATED)

LOT 254 (VACATED)

LOT 255 (VACATED)

LOT 256 (VACATED)

LOT 257 (VACATED)

LOT 258 (VACATED)

LOT 259 (VACATED)

LOT 260 (VACATED)

LOT 261 (VACATED)

LOT 262 (VACATED)

LOT 263 (VACATED)

LOT 264 (VACATED)

LOT 265 (VACATED)

LOT 266 (VACATED)

LOT 267 (VACATED)

LOT 268 (VACATED)

LOT 269 (VACATED)

LOT 270 (VACATED)

LOT 271 (VACATED)

LOT 272 (VACATED)

LOT 273 (VACATED)

LOT 274 (VACATED)

LOT 275 (VACATED)

LOT 276 (VACATED)

LOT 277 (VACATED)

LOT 278 (VACATED)

LOT 279 (VACATED)

LOT 280 (VACATED)

LOT 281 (VACATED)

LOT 282 (VACATED)

LOT 283 (VACATED)

LOT 284 (VACATED)

LOT 285 (VACATED)

LOT 286 (VACATED)

LOT 287 (VACATED)

LOT 288 (VACATED)

LOT 289 (VACATED)

LOT 290 (VACATED)

LOT 291 (VACATED)

# CERTIFIED SURVEY MAP NO. \_\_\_\_\_

Part of Lot 5 and all of Lots 8, 9, 12, 13 and 16, part of a vacated alley and part of vacated North 2nd Street all in Block 60 in The Plat of the Town of Milwaukee on the West side of the River, being a part of the Southwest 1/4 and Southeast 1/4 of the Northeast 1/4 of Section 29, Town 7 North, Range 22 East, in the City of Milwaukee, Milwaukee County, Wisconsin.

## SURVEYOR'S CERTIFICATE

STATE OF WISCONSIN} :SS  
MILWAUKEE COUNTY}

I, DONALD C. CHAPUT, Professional Land Surveyor, do hereby certify:

THAT I have surveyed, divided and mapped part of Lot 5 and all of Lots 8, 9, 12, 13 and 16, part of a vacated alley and part of vacated North 2nd Street all in Block 60 in The Plat of the Town of Milwaukee on the West side of the River, being a part of the Southwest 1/4 and Southeast 1/4 of the Northeast 1/4 of Section 29, Town 7 North, Range 22 East, in the City of Milwaukee, Milwaukee County, Wisconsin, which is bounded and described as follows:

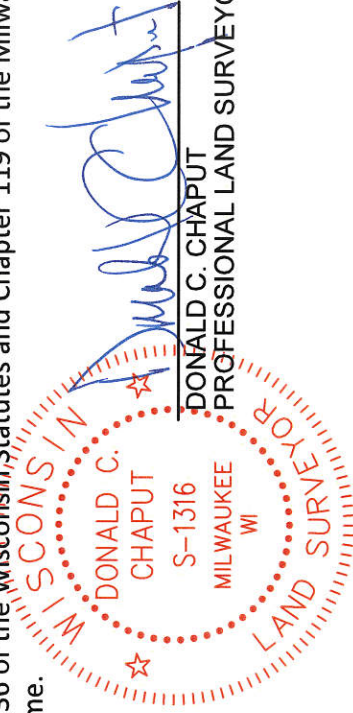
COMMENCING at the Southeast corner of the Northeast 1/4, said point being South 00°16'54" East 12.55 feet from a Witness Corner for said Southeast corner; thence South 89°42'15" West along the South line of said Northeast 1/4 Section 1295.09 feet to a point; thence North 00°08'05" East 124.68 feet to a point on the North line of West Wisconsin Avenue and the point of beginning of the lands hereinafter described, thence South 89°35'50" West along said North line 185.25 feet to a point on the East line of a public alley; thence North 00°05'31" East along said East line 271.32 feet to a point; thence North 89°45'25" East 185.45 feet to a point; thence South 00°08'05" West 270.81 feet to the point of beginning.  
Said lands as described contains 50,241 square feet or 1.1534 Acres.

THAT I have made the survey, land division and map by the direction of TNSH Landlord, LLC, owner.

THAT the map is a correct representation of all the exterior boundaries of the land surveyed and the land division thereof made.

THAT I have fully complied with Chapter 236 of the Wisconsin Statutes and Chapter 119 of the Milwaukee Code in surveying, dividing and mapping the same.

May 14, 2018  
DATE



DONALD C. CHAPUT  
PROFESSIONAL LAND SURVEYOR S-1316



Dcd # 3186

# CERTIFIED SURVEY MAP NO. \_\_\_\_\_

Part of Lot 5 and all of Lots 8, 9, 12, 13 and 16, part of a vacated alley and part of vacated North 2nd Street all in Block 60 in The Plat of the Town of Milwaukee on the West side of the River, being a part of the Southwest 1/4 and Southeast 1/4 of the Northeast 1/4 of Section 29, Town 7 North, Range 22 East, in the City of Milwaukee, Milwaukee County, Wisconsin.

## CERTIFICATE OF CITY TREASURER

STATE OF WISCONSIN} :SS  
MILWAUKEE COUNTY}

I, SPENCER COGGS, being the duly elected, qualified and acting City Treasurer of the City of Milwaukee, certify that in accordance with the records in the office of the City Treasurer of the City of Milwaukee there are no unpaid taxes or unpaid special assessments on the land included in this Certified Survey Map.

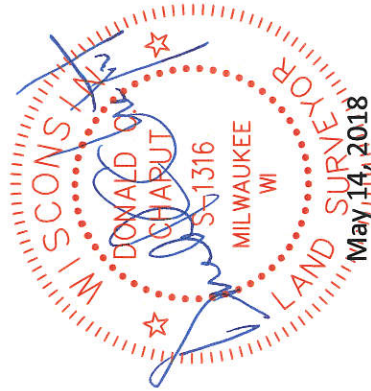
08/14/2018  
DATE

James F. Kuyhan, DEPUTY  
SPENCER COGGS, CITY TREASURER

## COMMON COUNCIL CERTIFICATE OF APPROVAL

I, certify that this Certified Survey Map was approved under Resolution File No. 180531 adopted by the Common Council of the City of Milwaukee on September 5, 2018.

[Signature]  
JAMES R. OWCZARSKI, CITY CLERK  
[Signature]  
TOM BARRETT, MAYOR



This instrument was drafted by Donald C. Chaput  
Professional Land Surveyor S-1316