

W. Villard

(66' R.O.W.)

1/4 SEC. LINE

Ave.

S.E. 1/4 SEC. 36, T.8N., R.21E.

207

St.

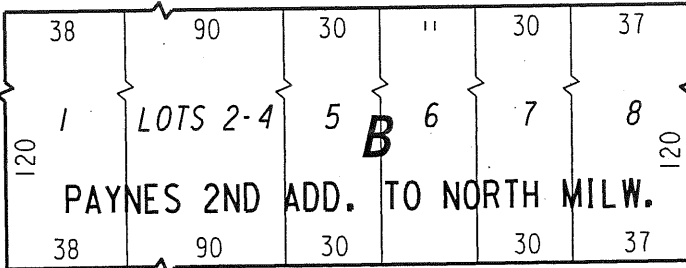
(80' R.O.W.)

1/4 SEC. LINE

N. 35th

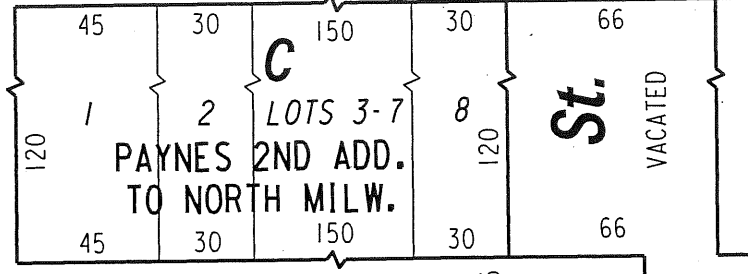
40

33



St.

66

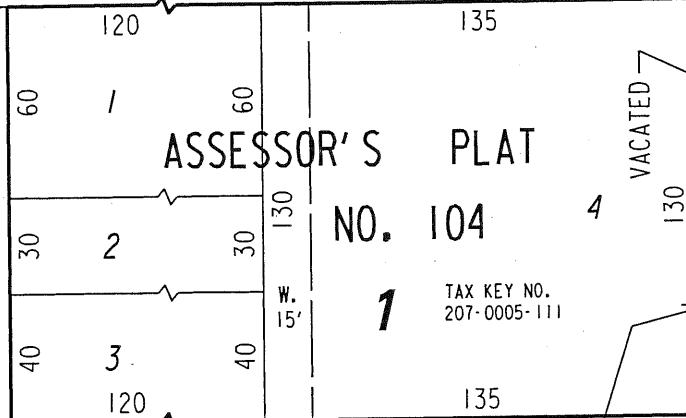


St.

VACATED

66

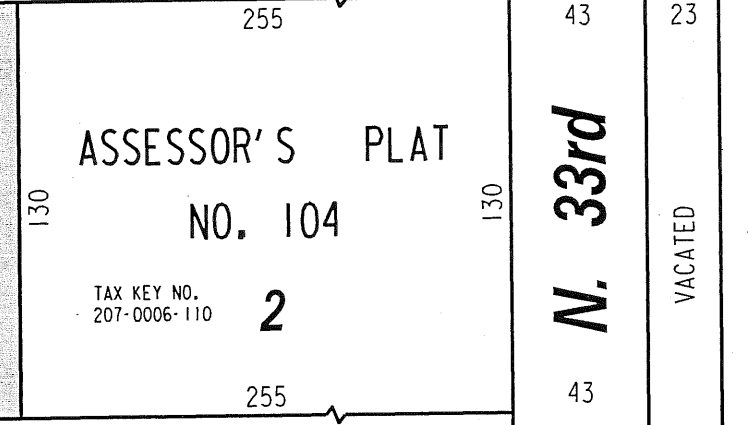
N/L ASSESSOR'S PLAT NO. 104



VACATED

N. 34th

59



N. 33rd

VACATED

43

W. Eggert

N. 1/2

S. 1/2

VACATED

521.80

3

ASSESSOR'S PLAT NO. 104

Pl.

48

23

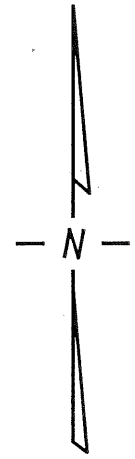


EXHIBIT "A"

FILE NO. 131747

INFRASTRUCTURE SERVICES DIVISION

MILWAUKEE, WISCONSIN

ASSIGNED TO: W.E. FUCHS

CH'K'D. BY: W.E. FUCHS

DRAWN BY: W.E.F.

DATE: MAY 14, 2014

PROJECT/GRANT NO.: WK52337344

SCALE: 1" = 60'

APPROVED BY:

Marcia Cornell

CENTRAL DRAFTING & RECORDS MANAGER

CITY ENGINEER