

**Worker's Compensation General Data**

	2002	2003	2004	2005	2006	2007	2008	2009	2010	2011
<b>CITY WIDE DATA</b>										
Claims	2,935	3,087	2,926	3,043	3,097	2,806	2,688	2,345	2,225	1,903
		5%	-5%	4%	2%	-9%	-4%	-13%	-5%	-14%
Claims w/Trend	2,935	3,087	2,926	3,043	3,097	2,806	2,688	2,653	2,315	2,196
Medical/Indemnity Claims				1,850	1,835	1,708	1,686	1,470	1,402	1,193
Recordable Cases	1,071	1,143	1,137	1,171	1,140	1,221	1,073	927	872	744
Incidence Rate	15.13	16.52	16.8	16.87	17.75	18.31	16.01	14.22	13.82	11.93
Current Lost Workdays	16,650	20,756	20,499	24,456	21,279	19,488	24,817	15,441	16,421	15,432
		25%	-1%	19%	-13%	-8%	27%	-38%	6%	-6%
Lost Workdays Trend w/No	16,650	20,756	20,499	24,456	21,279	19,488	24,817	26,058	27,361	28,729
Current Injury Hours	188,595	219,717	209,387	232,006	197,972	206,227	217,584	152,596	165,083	124,874
		17%	-5%	11%	-15%	4%	6%	-30%	8%	-24%
Injury Hours Trend w/No RMP	188,595	219,717	209,387	232,006	197,972	206,227	217,584	223,894	230,387	237,068
Current Injury Pay	\$3,041,076	\$3,640,475	\$3,601,928	\$4,081,803	\$3,618,117	\$3,758,599	\$4,096,525	\$3,062,781	\$3,326,928	\$2,607,269
		20%	-1%	13%	-11%	4%	9%	-25%	9%	-22%
Injury Pay Trend w/No RMP	\$3,041,076	\$3,640,475	\$3,601,928	\$4,081,803	\$3,618,117	\$3,758,599	\$4,096,525	\$4,325,930	\$4,568,183	\$4,824,001
Current WC Expendt	\$7,148,013	\$8,869,567	\$9,071,254	\$9,693,500	\$11,755,087	\$12,259,304	\$13,737,635	\$11,575,195	\$12,444,770	\$11,362,821
		24%	2%	7%	21%	4%	12%	-16%	8%	-9%
WC Expendt Trend w/No RMP	\$7,148,013	\$8,869,567	\$9,071,254	\$9,693,500	\$11,755,087	\$12,259,304	\$13,737,635	\$14,974,022	\$16,321,684	\$17,790,636
WC Expendt Trend w/Med C	\$7,148,013	\$8,869,567	\$9,071,254	\$9,693,500	\$11,755,087	\$12,259,304	\$13,737,635	\$14,287,140	\$14,858,626	\$15,452,971
Cost Per Med/Ind Claim Current				\$2,040	\$2,047	\$2,436	-\$219	-\$211	\$3,169	\$2,882
Cost Per Med/Ind Claim No RMP				\$2,040	\$2,047	\$2,436	-\$219	-\$241	-\$265	-\$292
					0.37%	18.98%	-108.99%	-3.47%	-1598.64%	-9.04%
<b>MFD</b>										
Claims	713	713	734	856	973	725	627	566	614	432
Recordable Cases	340	341	332	360	346	364	294	270	298	197
Incidence Rate	25.09	26.47	26.3	28.36	29.36	29.83	24.55	22.49	26.99	17.85
Lost Workdays	5,524	7,630	5,476	9,178	8,821	4,684	10,136	3,625	5,755	4,614
Injury Hours	80,689	96,714	75,018	97,308	98,590	92,937	107,094	72,401	86,670	52,670
Injury Pay	\$1,270,221	\$1,558,135	\$1,276,839	\$1,628,876	\$1,721,210	\$1,649,650	\$1,956,139	\$1,442,241	\$1,723,367	\$1,018,141
<b>MPD</b>										
Claims	862	917	768	877	920	891	865	775	663	636
Recordable Cases	250	332	258	316	300	280	251	244	177	166
Incidence Rate	10.96	14.3	11.43	13.51	13.55	12	10.69	10.78	7.88	7.36
Lost Workdays	3,296	4,474	3,931	5,106	4,017	2,316	3,441	3,885	2,833	3,726
Injury Hours	36,584	41,683	45,575	50,190	34,252	26,238	35,116	32,241	29,201	34,540
Injury Pay	\$715,879	\$855,668	\$928,228	\$1,064,451	\$764,525	\$593,130	\$824,790	\$786,083	\$719,344	\$872,604
<b>DPW All Divisions</b>										
Claims	0	0	0	1163	1069	1044	1075	887	862	740
Recordable Cases	420	399	481	444	443	509	474	374	359	343
Incidence Rate	21.59	21.64	26.31	23.84	25.74	28.74	26.01	21.25	20.99	20.81
Lost Workdays	7,441	7,899	0	9,393	8,032	11,852	10,341	7,567	7,061	6,822
Injury Hours	67,583	73,989	84,864	79,548	61,355	76,834	66,553	47,064	44,198	35,007

**Worker's Compensation General Data**

	<b>2002</b>	<b>2003</b>	<b>2004</b>	<b>2005</b>	<b>2006</b>	<b>2007</b>	<b>2008</b>	<b>2009</b>	<b>2010</b>	<b>2011</b>
<b>Injury Pay</b>	\$995,248	\$1,117,519	\$1,338,304	\$1,306,303	\$1,062,630	\$1,335,152	\$1,164,474	\$814,767	\$786,257	\$653,849

**Worker's Compensation General Data**

	2002	2003	2004	2005	2006	2007	2008	2009	2010	2011
<b>DPW OPS</b>										
Claims	0	0	0	771	690	710	684	524	499	445
Recordable Cases	303	264	342	352	353	388	341	232	219	215
Incidence Rate	33.41	31.03	41.42	43.45	46.54	48.48	41.14	29.89	33.02	33.76
Lost Workdays	4,850	4,598	6,801	6,985	5,967	8,688	7,572	3,977	3,611	3,841
Injury Hours	43,915	46,851	54,626	52,939	42,343	47,675	44,779	24,840	23,731	18,372
Injury Pay	\$657,492	\$726,528	\$865,867	\$901,922	\$720,000	\$821,724	\$798,918	\$422,770	\$420,116	\$344,051
<b>DPW INFRA</b>										
Claims	0	0	0	229	186	172	222	184	199	171
Recordable Cases	88	99	105	63	55	77	81	73	80	78
Incidence Rate	15.34	18.77	19.15	11.22	10.37	14.44	18.25	16.57	15.51	15.6
Lost Workdays	1,717	2,827	2,813	2,096	1,480	2,285	1,666	1,716	2,019	1,157
Injury Hours	13,024	16,022	16,715	15,580	12,925	13,551	12,744	12,084	8,452	6,053
Injury Pay	\$187,988	\$226,157	\$246,603	\$234,203	\$217,238	\$240,622	\$223,294	\$228,102	\$169,308	\$112,857

2012	2013	2014	2015
<b> </b>			
1,869	1,979	1,916	1,911
-2%	6%	3%	-1.3%
1,878	1,845	1,953	1,891
1,208	1,203	1,133	1,207
656	674	655	665
10.5	10.82	10.49	10.37
12,995	13,215	9,439	9,465
-16%	2%	-29%	6.3%
30,165	31,673	33,257	34,920
111,250	90,922	64,815	61,806
-11%	-18%	-29%	2.9%
243,943	251,017	258,297	265,788
\$2,378,455	\$1,859,517	\$1,328,875	\$1,265,650
-9%	-22%	-44%	5.6%
\$5,094,145	\$5,379,417	\$5,680,664	\$5,998,781
\$14,575,235	\$12,476,141	\$11,685,882	\$10,102,568
28%	-14%	-6%	9.3%
\$19,391,793	\$21,137,054	\$23,039,389	\$25,112,934
\$16,071,090	\$16,713,933	\$17,382,491	\$18,077,790
<b> </b>			
\$2,626	\$3,485	\$3,561	\$3,039
-\$321	-\$353	-\$388	-\$427
-8.90%	32.71%	2.19%	-14.67%
<b> </b>			
441	368	335	404
195	159	124	132
17.79	14.51	11.59	12.58
4,652	3,850	2,381	2,377
43,749	35,506	20,769	20,428
\$882,209	\$738,214	\$391,787	\$391,787
<b> </b>			
663	680	660	630
164	145	157	146
7.44	6.63	7.24	6.57
3,629	2,064	1,926	2,325
40,082	23,008	22,706	18,192
\$1,038,491	\$630,555	\$603,023	\$468,122
<b> </b>			
688	839	828	767
264	317	339	355
15.77	18.88	19.79	20.25
3,895	6,626	4,969	4,400
22,379	27,546	19,982	21,058

<b>2012</b>	<b>2013</b>	<b>2014</b>	<b>2015</b>
\$341,124	\$411,757	\$312,735	\$324,015

<b>2012</b>	<b>2013</b>	<b>2014</b>	<b>2015</b>
392	530	510	470
153	217	214	217
24.08	33.6	31.67	32.17
1,781	3,959	2,892	2,635
10,838	13,081	10,095	12,730
\$168,712	\$197,119	\$152,603	\$192,690

163	170	188	159
54	42	80	87
10.45	7.85	14.86	15.43
1,207	1,047	1,128	1,039
5,263	3,322	6,390	5,688
\$84,183	\$52,691	\$106,490	\$93,195

Worker's Compensation General Data

City RMP Start

	2008	2009	2010	2011	2012	2013	2014	2015	% Change Over Prior	% Change Since 2008	3 Yr Avg
<b>CITY WIDE DATA</b>											
FTEs	7,742	7,597	7,284	7,311	7,280	7,189	7,264	7,278	0.2%	-6.0%	7,244
Claims	2,688	2,345	2,225	1,903	1,869	1,979	1,916	1,911	-0.3%	-28.9%	1,935
MPS Claims	1,429	1,394	1,519	1,414	1,256	1,234	1,111	1,071	-3.6%		1,139
Medical/Indemnity Claims	1,686	1,470	1,402	1,193	1,208	1,203	1,133	1,207	6.5%	-28.4%	1,181
Recordable Cases	1,073	927	872	744	656	674	655	665	1.5%	-38.0%	665
Incidence Rate	16.01	14.22	13.82	11.93	10.50	10.82	10.49	10.37	-1.1%	-35.2%	11
Lost Workdays	24,817	15,441	16,421	15,432	12,995	13,215	9,439	9,465	0.3%	-61.9%	10,706
Injury Hours	217,584	152,596	165,083	124,874	111,250	90,922	64,815	61,806	-4.6%	-71.6%	72,514
Injury Pay	\$4,096,525	\$3,062,781	\$3,326,928	\$2,607,269	\$2,378,455	\$1,859,517	\$1,328,875	\$1,265,650	-4.8%	-69.1%	\$1,484,681
Sick Leave Non-FMLA	404,312	351,713	326,736	347,776	269,536	283,938	274,028	274,028	0.0%	-32.2%	275,382
WC Expenditures	\$13,737,635	\$11,575,195	\$12,444,770	\$11,362,821	\$14,575,235	\$12,476,141	\$11,685,882	\$10,102,568	-13.5%	-26.5%	\$11,421,530
Adjst WC Expendt (No MPS)	\$13,737,635	\$11,574,568	\$12,032,116	\$11,340,483	\$13,489,258	\$11,510,968	\$11,451,141	\$10,026,590	-12.4%		
Current Year Claim Exper	-\$369,324	-\$310,831	\$4,442,751	\$3,438,730	\$3,172,052	\$4,192,177	\$4,034,662	\$3,667,649	-9.1%		\$3,964,829
Prior Year Claim Expendt			\$7,984,658	\$8,025,120	\$10,752,862	\$8,918,042	\$7,840,028	\$7,421,243	-5.3%		\$8,059,771
iVos Total Paid in Period	\$13,911,677	\$11,708,354	\$12,427,409	\$11,463,850	\$13,924,914	\$13,110,219	\$11,874,690	\$11,088,892	-6.6%		\$12,024,600
			36%	30%	23%	32%	34%	33%	-2.7%		33%
Cost Per Med/Ind Claim	-\$219	-\$211	\$3,169	\$2,882	\$2,626	\$3,485	\$3,561	\$3,039	-14.7%		\$3,361
Cost Per Recordable Case	-\$344	-\$335	\$5,095	\$4,622	\$4,835	\$6,220	\$6,160	\$5,515	-10.5%		\$5,965
	-108.99%	-3.47%	-1598.64%	-9.04%	-8.90%	32.71%	2.19%	-14.67%			
<b>MFD</b>											
FTEs	1,133	1,097	1,034	1,033	1,014	1,015	1,007	1,007	0.0%	-11.1%	1,010
Claims	627	566	614	432	441	368	335	404	20.6%	-35.6%	369
Medical/Indemnity Claims	380	355	395	264	295	232	206	227	10.2%	-40.3%	222
Recordable Cases	294	270	298	197	195	159	124	132	6.5%	-55.1%	138
Incidence Rate	24.55	22.49	26.99	17.85	17.79	14.51	11.59	12.58	8.5%	-48.8%	13
Lost Workdays	10,136	3,625	5,755	4,614	4,652	3,850	2,381	2,377	-0.2%	-76.5%	2,869
Injury Hours	107,094	72,401	86,670	52,670	43,749	35,506	20,769	20,428	-1.6%	-80.9%	25,568
Injury Pay	\$1,956,139	\$1,442,241	\$1,723,367	\$1,018,141	\$882,209	\$738,214	\$391,787	\$391,787	0.0%	-80.0%	\$507,263
Sick Leave Non-FMLA	44,416	36,981	36,375	40,406	36,875	37,708	40,968	40,968	0.0%	-7.8%	39,881
WC Expenditures	\$3,434,665	\$2,890,684	\$3,613,992	\$3,168,659	\$3,290,786	\$2,986,754	\$1,944,357	\$1,944,357	0.0%		\$2,291,822
<b>MPD</b>											
FTEs	2,899	2,890	2,753	2,763	2,756	2,727	2,748	2,755	0.3%	-5.0%	2,743
Claims	865	775	663	636	663	680	660	630	-4.5%	-27.2%	657
Medical/Indemnity Claims	515	468	390	360	400	391	375	383	2.1%	-25.6%	383
Recordable Cases	251	244	177	166	164	145	157	146	-7.0%	-41.8%	149
Incidence Rate	10.69	10.78	7.88	7.36	7.44	6.63	7.24	6.57	-9.3%	-38.5%	7
Lost Workdays	3,441	3,885	2,833	3,726	3,629	2,064	1,926	2,325	20.7%	-32.4%	2,105
Injury Hours	35,116	32,241	29,201	34,540	40,082	23,008	22,706	18,192	-19.9%	-48.2%	21,302
Injury Pay	\$824,790	\$786,083	\$719,344	\$872,604	\$1,038,491	\$630,555	\$603,023	\$468,122	-22.4%	-43.2%	\$567,233
Sick Leave Non-FMLA	131,650	109,191	94,964	96,078	81,865	81,271	73,751	73,751	0.0%	-44.0%	76,258
WC Expenditures	\$3,711,633	\$3,123,786	\$2,896,798	\$3,819,332	\$4,456,461	\$3,643,719	\$3,784,701	\$3,784,701	0.0%		\$3,737,707

Worker's Compensation General Data

City RMP Start

	2008	2009	2010	2011	2012	2013	2014	2015	% Change Over Prior	% Change Since 2008	3 Yr Avg
<b>DPW All Divisions</b>											
FTEs	2,057	2,061	2,004	1,991	1,980	1,941	1,995	1,983	-0.6%	-3.6%	1,973
Claims	1075	887	862	740	688	839	828	767	-7.4%	-28.7%	811
Medical/Indemnity Claims	727	587	567	511	466	527	506	523	3.4%	-28.1%	519
Recordable Cases	474	374	359	343	264	317	339	355	4.7%	-25.1%	337
Incidence Rate	26.01	21.25	20.99	20.81	15.77	18.88	19.79	20.25	2.3%	-22.1%	20
Lost Workdays	10,341	7,567	7,061	6,822	3,895	6,626	4,969	4,400	-11.5%	-57.5%	5,332
Injury Hours	66,553	47,064	44,198	35,007	22,379	27,546	19,982	21,058	5.4%	-68.4%	22,862
Injury Pay	\$1,164,474	\$814,767	\$786,257	\$653,849	\$341,124	\$411,757	\$312,735	\$324,015	3.6%	-72.2%	\$349,502
Sick Leave Non-FMLA	142,972	128,098	121,671	143,250	90,423	100,745	97,160	97,160	0.0%	-32.0%	98,355
WC Expenditures	\$6,282,452	\$5,287,441	\$5,579,227	\$4,231,682	\$5,639,407	\$5,782,021	\$5,748,831	\$5,748,831	0.0%		\$5,759,895
<b>DPW INFRA</b>											
FTEs	512	527	597	599	597	597	629	620	-1.4%	21.1%	615
Claims	222	184	199	171	163	170	188	159	-15.4%	-28.4%	172
Medical/Indemnity Claims	134	135	136	128	112	112	125	106	-15.2%	-20.9%	114
Recordable Cases	81	73	80	78	54	42	80	87	8.8%	7.4%	70
Incidence Rate	18.25	16.57	15.51	15.6	10.45	7.85	14.86	15.43	3.8%	-15.5%	13
Lost Workdays	1,666	1,716	2,019	1,157	1,207	1,047	1,128	1,039	-7.9%	-37.6%	1,071
Injury Hours	12,744	12,084	8,452	6,053	5,263	3,322	6,390	5,688	-11.0%	-55.4%	5,133
Injury Pay	\$223,294	\$228,102	\$169,308	\$112,857	\$84,183	\$52,691	\$106,490	\$93,195	-12.5%	-58.3%	\$84,125
Sick Leave Non-FMLA	32,251	30,713	33,654	38,979	29,493	30,509	29,968	29,968	0.0%	-7.1%	30,148
WC Expenditures	\$1,306,319	\$1,099,425	\$1,152,315	\$995,730	\$1,369,652	\$1,538,036	\$1,460,321	\$1,460,321	0.0%		\$1,486,226
<b>DPW OPS</b>											
FTEs	879	874	724	699	721	714	732	722	-1.4%	-17.9%	723
Claims	684	524	499	445	392	530	510	470	-7.8%	-31.3%	503
Medical/Indemnity Claims	495	349	335	309	271	328	309	322	4.2%	-34.9%	320
Recordable Cases	341	232	219	215	153	217	214	217	1.4%	-36.4%	216
Incidence Rate	41.14	29.89	33.02	33.76	24.08	33.6	31.67	32.17	1.6%	-21.8%	32
Lost Workdays	7,572	3,977	3,611	3,841	1,781	3,959	2,892	2,635	-8.9%	-65.2%	3,162
Injury Hours	44,779	24,840	23,731	18,372	10,838	13,081	10,095	12,730	26.1%	-71.6%	11,969
Injury Pay	\$798,918	\$422,770	\$420,116	\$344,051	\$168,712	\$197,119	\$152,603	\$192,690	26.3%	-75.9%	\$180,804
Sick Leave Non-FMLA	76,418	62,988	54,377	66,728	37,145	44,649	43,138	43,138	0.0%	-43.5%	43,642
WC Expenditures	\$4,266,867	\$3,591,084	\$3,654,676	\$2,432,547	\$3,273,297	\$3,003,977	\$3,412,772	\$3,412,772	0.0%		\$3,276,507



Worker's Compensation General Data

City RMP Start

	2008	2009	2010	2011	2012	2013	2014	2015	% Change Over Prior	% Change Since 2008	3 Yr Avg
<b>DPW PARKING</b>											
FTEs	127	127	123	129	120	118	118	118	0.0%	-7.1%	118
Claims	32	40	37	39	27	15	19	24	26.3%	-25.0%	19
Medical/Indemnity Claims	15	12	13	13	6	9	11	17	54.5%	13.3%	12
Recordable Cases	6	7	11	5	4	6	8	5	-37.5%	-16.7%	6
Incidence Rate	5.66	6.61	10.72	5.16	4.15	6.35	8.41	5.07	-39.7%	-10.4%	7
Lost Workdays	24	137	197	358	314	152	315	150	-52.4%	525.0%	206
Injury Hours	2,494	968	2,361	2,619	1,314	926	169	749	343.0%	-70.0%	614
Injury Pay	\$34,739	\$13,880	\$33,643	\$35,200	\$18,847	\$10,730	\$2,059	\$9,625	367.5%	-72.3%	\$7,471
Sick Leave Non-FMLA	8,411	8,182	6,799	8,206	4,638	5,700	4,576	4,576	0.0%	-45.6%	4,950
WC Expenditures	\$133,313	\$112,199	\$55,876	\$121,006	\$211,923	\$93,967	\$46,685	\$46,685	0.0%		\$62,446
<b>DPW SEWER</b>											
FTEs	139	134	133	133	133	115	115	115	0.0%	-17.4%	115
Claims	53	54	52	32	46	49	40	38	-5.0%	-28.3%	42
Medical/Indemnity Claims	34	40	40	25	34	28	22	30	36.4%	-11.8%	27
Recordable Cases	22	29	25	15	16	14	10	14	40.0%	-36.4%	13
Incidence Rate	19.9	27.14	23.7	15.65	16.85	16.58	11.92	16.75	40.5%	-15.8%	15
Lost Workdays	413	1,108	503	450	144	437	187	65	-65.2%	-84.3%	230
Injury Hours	2,283	4,613	4,211	3,020	764	2,985	594	457	-23.1%	-80.0%	1,345
Injury Pay	\$35,680	\$71,439	\$71,998	\$51,206	\$11,020	\$42,434	\$8,631	\$6,963	-19.3%	-80.5%	\$19,343
Sick Leave Non-FMLA	7,923	6,992	6,966	7,422	3,882	4,284	4,332	4,332	0.0%	-45.3%	4,316
WC Expenditures	\$223,684	\$188,257	\$353,929	\$243,301	\$145,607	\$393,627	\$120,807	\$120,807	0.0%		\$211,747
<b>DPW Water</b>											
FTEs	341	342	368	370	352	353	356	360	1.3%	5.6%	356
Claims	80	83	69	49	59	71	66	75	13.6%	-6.3%	71
Medical/Indemnity Claims	45	50	41	35	42	49	37	47	27.0%	4.4%	44
Recordable Cases	23	32	24	30	37	37	26	32	23.1%	39.1%	32
Incidence Rate	8.1	11.22	8.73	11.06	13.03	13.12	9.33	11.99	28.5%	48.0%	11
Lost Workdays	666	629	731	1,016	449	1,021	391	511	30.7%	-23.3%	641
Injury Hours	4,253	4,558	5,443	4,944	4,200	7,233	2,735	1,435	-47.5%	-66.3%	3,801
Injury Pay	\$71,843	\$77,354	\$91,192	\$110,536	\$58,362	\$108,783	\$42,952	\$21,541	-49.8%	-70.0%	\$57,759
Sick Leave Non-FMLA	16,836	17,611	17,939	19,075	14,094	14,499	14,017	14,017	0.0%	-16.7%	14,178
WC Expenditures	\$346,844	\$291,911	\$361,530	\$436,536	\$638,766	\$749,196	\$655,058	\$655,058	0.0%		\$686,438

# OSHA LOST WORKDAYS

CITY OF MILWAUKEE  
DEPT OF EMPLOYEE RELATIONS

## OSHA Lost Workdays

DEPARTMENT	2005 LWD	2006 R/T Days	2006 LWD	2007 R/T Days	2007 LWD	2008 R/T Days	2008 LWD	2009 R/T Days	2009 LWD	2010 R/T Days	2010 LWD
ADMINISTRATION, DEPT of	-		-		-		-		-		-
ANNUITY & PENSION	-		-		-		-		-		-
BOARD OF APPEALS	-		-		-		-		-		-
BUILDING INSPECTION	-		-		-		-		-		-
NEIGHBORHOOD SERVICES	211	29	99	38	377	20	287	1	75		100
CITY ATTORNEY	-		-		-		-		-		-
CITY DEVELOPMENT	71	40	68		184	182	-		174		199
CITY TREASURER	-		1		-		-		-		-
COMMON COUNCIL/CITY CLERK	1		-		-		-	4	1		-
COMPTROLLER	-		83		-		-		-		-
ELECTION COMMISSION	-		-		-	50	-		-		-
EMPLOYEE RELATIONS	-		-		-		-		-		-
FIRE & POLICE COMMISSION	-		-		-		-		-		-
HEALTH DEPARTMENT	5		26	27	69	29	166		13	172	168
MAYOR'S OFFICE	-		-		-		-		-		-
MUNICIPAL COURT	-		6		-		-		-		-
PORT OF MILWAUKEE	82		-		-	60	-		-		-
PUBLIC LIBRARY	409	131	126	301	117	778	446	232	101	220	305
ASSESSOR'S OFFICE	-		-		-		-		-		-
DEFERRED COMP	-		-		-		-		-		-
DPW ADMINISTRATION	-		18		-		-		-		-
DPW PARKING	84		100		177		24		137	29	197
DPW OPERATIONS	6,985	787	5,967	869	8,688	581	7,572	1,031	3,977	1,185	3,611
DPW INFRASTRUCTURE	2,096		1,480	28	2,285	2	1,666	174	1,716	213	2,019
DPW SEWER MAINT	-		-		-		413	84	1,108	112	503
DPW WATER WORKS	228	13	467		702	6	666	39	629	100	731
FIRE DEPARTMENT	9,178	1,462	8,821	2,082	6,577	1,729	10,136	4,020	3,625	4,781	5,755
POLICE DEPARTMENT	5,106	2,100	4,017	1,933	3,077	1,600	3,441	1,436	3,885	1,186	2,833
<b>CITY TOTAL</b>	<b>24,456</b>	<b>4,562</b>	<b>21,279</b>	<b>5,278</b>	<b>22,253</b>	<b>5,037</b>	<b>24,817</b>	<b>7,021</b>	<b>15,441</b>	<b>7,998</b>	<b>16,421</b>
<b>ADMIN TOTALS</b>	<b>779</b>	<b>200</b>	<b>409</b>	<b>366</b>	<b>747</b>	<b>1,119</b>	<b>899</b>	<b>237</b>	<b>364</b>	<b>392</b>	<b>772</b>

# OSHA LOST WORKDAYS

CITY OF MILWAUKEE  
DEPT OF EMPLOYEE RELATIONS

2011 R/T Days	2011 LWD
	-
	-
	-
	-
	-
	-
	74
	-
	2
	-
	-
	-
	-
23	84
	-
	-
13	23
66	87
	-
	-
	-
	358
1,344	3,841
309	1,157
265	450
148	1,016
1,587	4,614
1,601	3,726
<b>5,356</b>	<b>15,432</b>
<b>102</b>	<b>270</b>

**Injury Pay & Hours**

<b>Injury Pay</b>	<b>2005</b>	<b>2006</b>	<b>2007</b>	<b>2008</b>	<b>2009</b>	<b>2010</b>	<b>2011</b>	<b>2012</b>	<b>2013</b>	<b>2014</b>	<b>2015</b>
City Attorney				\$870		\$3,357			\$360		
City Treasurer		\$0									
Common Council-City Clerk	\$93				\$519	\$855					
Comptroller		\$58				\$145					
DCD-General Mgmt & Policy Dev	\$402	\$257			\$691	\$82				\$1,522	
DCD-Public Housing Programs	\$2,256	\$8,033	\$55,356	\$30,585	\$831	\$29,831	\$1,540	\$18,023	\$17,950		\$158
Dept of Neighborhood Services	\$45,088	\$12,352	\$82,129	\$25,807	\$10,912	\$11,479	\$9,204	\$18,079	\$16,807	\$4,422	\$22,160
DER-Administration Division		\$6,609	\$1,616								
DER-Employee Benefits Division		\$128	\$429								
DER-Operations			\$167						\$3,039		\$146
DOA-Business Operations Div											\$0
DOA-Info & Tech Mgmt Div	\$152	\$27,168	\$1,633	\$11,553	\$1,357						
DPW-Admin Services Division					\$1,222						
DPW-Infra	\$234,203	\$217,238	\$240,622	\$223,294	\$228,102	\$169,308	\$112,857	\$84,183	\$52,691	\$106,490	\$93,195
DPW-Operations	\$901,922	\$720,000	\$821,724	\$798,918	\$422,770	\$420,116	\$344,051	\$168,712	\$197,119	\$152,603	\$192,690
DPW-Parking	\$10,306	\$14,911	\$23,177	\$34,739	\$13,880	\$33,643	\$35,200	\$18,847	\$10,730	\$2,059	\$9,625
DPW-Sewer	\$88,207	\$60,365	\$132,846	\$35,680	\$71,439	\$71,998	\$51,206	\$11,020	\$42,434	\$8,631	\$6,963
DPW-Water	\$71,665	\$50,115	\$116,783	\$71,843	\$77,354	\$91,192	\$110,536	\$58,362	\$108,783	\$42,952	\$21,541
<b>DPW Total</b>	<b>\$1,306,303</b>	<b>\$1,062,630</b>	<b>\$1,335,152</b>	<b>\$1,164,474</b>	<b>\$814,767</b>	<b>\$786,257</b>	<b>\$653,849</b>	<b>\$341,124</b>	<b>\$411,757</b>	<b>\$312,735</b>	<b>\$324,015</b>
Election Commission				\$8,966							
<b>Fire</b>	<b>\$1,628,876</b>	<b>\$1,721,210</b>	<b>\$1,649,650</b>	<b>\$1,956,139</b>	<b>\$1,442,241</b>	<b>\$1,732,862</b>	<b>\$1,018,141</b>	<b>\$882,209</b>	<b>\$738,214</b>	<b>\$391,787</b>	<b>\$438,612</b>
Health Department	\$4,963	\$3,818	\$20,171	\$19,464	\$940	\$26,182	\$8,433	\$26,821	\$30,970	\$9,208	\$2,064
Library-Admin Services	\$12,791	\$10,953	\$16,495	\$23,256	\$1,803	\$9,653	\$25,585				\$7,589
Library-Central Library			\$1,438	\$393		\$218	\$201				
Library-Neigh Lib & Ext Serv	\$7,715	\$189	\$1,233	\$20,811	\$2,541	\$6,662	\$4,950			\$5,530	
Municipal Court	\$318				\$96		\$187	\$15,375	\$4,963	\$648	\$2,783
<b>Police</b>	<b>\$1,064,451</b>	<b>\$764,525</b>	<b>\$593,130</b>	<b>\$824,790</b>	<b>\$786,083</b>	<b>\$719,344</b>	<b>\$885,179</b>	<b>\$1,076,824</b>	<b>\$630,555</b>	<b>\$603,023</b>	<b>\$468,122</b>
Port of Milwaukee	\$8,395	\$188		\$9,417					\$4,902		
<b>Grand Total</b>	<b>\$4,081,803</b>	<b>\$3,618,117</b>	<b>\$3,758,599</b>	<b>\$4,096,525</b>	<b>\$3,062,781</b>	<b>\$3,326,928</b>	<b>\$2,607,269</b>	<b>\$2,378,455</b>	<b>\$1,859,517</b>	<b>\$1,328,875</b>	<b>\$1,265,650</b>

<b>Injury Hours</b>	<b>2005</b>	<b>2006</b>	<b>2007</b>	<b>2008</b>	<b>2009</b>	<b>2010</b>	<b>2011</b>	<b>2012</b>	<b>2013</b>	<b>2014</b>	<b>2015</b>
City Attorney				28		0			25		
City Treasurer		0									
Common Council-City Clerk	6				17	28					
Comptroller		4				9					
DCD-General Mgmt & Policy Dev	28	16			49	6				120	
DCD-Public Housing Programs	48	499	3,741	1,967	52	1,947	96	1,304	1,271		11
Dept of Neighborhood Services	2,305	626	3,861	1,685	428	542	0	947	749	237	1,181
DER-Administration Division		240	97								
DER-Employee Benefits Division		8	21								
DER-Operations			11						240		11
DOA-Business Operations Div											0
DOA-Info & Tech Mgmt Div	6	1,052	59	430	51						
DPW-Admin Services Division					0						
DPW-Infra	15,580	12,925	13,551	12,744	12,084	8,452	6,053	5,263	3,322	6,390	5,688
DPW-Operations	52,939	42,343	47,675	44,779	24,840	23,731	18,372	10,838	13,081	10,095	12,730
DPW-Parking	782	971	1,685	2,494	968	2,361	2,619	1,314	926	169	749
DPW-Sewer	5,847	2,912	8,425	2,283	4,613	4,211	3,020	764	2,985	594	457
DPW-Water	4,399	2,204	5,499	4,253	4,558	5,443	4,944	4,200	7,233	2,735	1,435
<b>DPW Total</b>	<b>79,548</b>	<b>61,355</b>	<b>76,834</b>	<b>66,553</b>	<b>47,064</b>	<b>44,198</b>	<b>35,007</b>	<b>22,379</b>	<b>27,546</b>	<b>19,982</b>	<b>21,058</b>
Election Commission				360							
<b>Fire</b>	<b>97,308</b>	<b>98,590</b>	<b>92,937</b>	<b>107,094</b>	<b>72,401</b>	<b>86,670</b>	<b>52,670</b>	<b>43,749</b>	<b>35,506</b>	<b>20,769</b>	<b>20,428</b>
Health Department	240	222	1,143	1,050	38	1,436	466	1,839	1,948	586	109
Library-Admin Services	920	785	1,059	1,627	105	642	1,714				649
Library-Central Library			102	32		0	16				
Library-Neigh Lib & Ext Serv	916	312	124	1,116	145	408	366			376	
Municipal Court	12				5		0	951	133	40	167
<b>Police</b>	<b>50,190</b>	<b>34,252</b>	<b>26,238</b>	<b>35,116</b>	<b>32,241</b>	<b>29,201</b>	<b>34,540</b>	<b>40,082</b>	<b>23,008</b>	<b>22,706</b>	<b>18,192</b>
Port of Milwaukee	480	12		527					496		
<b>Grand Total</b>	<b>232,006</b>	<b>197,972</b>	<b>206,227</b>	<b>217,584</b>	<b>152,596</b>	<b>165,083</b>	<b>124,874</b>	<b>111,250</b>	<b>90,922</b>	<b>64,815</b>	<b>61,806</b>

---

**Grand Total**

\$4,587

\$0

\$1,467

\$203

\$2,954

\$164,563

\$258,437

\$8,225

\$557

\$3,353

\$0

\$41,863

\$1,222

\$1,762,183

\$5,140,624

\$207,118

\$580,789

\$821,126

---

**\$8,513,063**

\$8,966

**\$13,599,940**

\$153,035

\$108,125

\$2,250

\$49,632

\$24,371

**\$8,416,026**

\$22,903

---

**\$31,384,518**

---

**Grand Total**

53

0

51

12

219

10,933

12,560

337

29

262

0

1,598

0

102,051

301,421

15,037

36,111

46,903

---

**501,523**

360

**728,122**

9,076

7,500

150

3,762

1,308

**345,766**

1,515

---

**1,625,136**

---

Sick Leave	2008	2009	2010	2011	2012	2013	2014		% Change
FTE Counts	2008	2009	2010	2011	2012	2013	2014	3 Yr Avg	over Prior
All City	7,742	7,597	7,284	7,311	7,280	7,189	7,278	7,249	1.2%
MFD	1,133	1,097	1,034	1,033	1,014	1,015	1,007	1,012	-0.8%
MPD	2,899	2,890	2,753	2,763	2,756	2,727	2,755	2,746	1.0%
DPW Infra	512	527	597	599	597	597	620	605	3.7%
DPW Ops	879	874	724	699	721	714	722	719	1.1%
DPW Total	2,057	2,061	2,004	1,991	1,980	1,941	1,983	1,968	2.2%
Big 3	6,089	6,049	5,791	5,787	5,749	5,683	5,745	5,726	1.1%

Sick Leave Totals	2008	2009	2010	2011	2012	2013	2014	3 Yr Avg	% Change
									over Prior
All City	404,312	351,713	326,736	347,776	269,536	283,938	274,028	275,834	-3.5%
MFD	44,416	36,981	36,375	40,406	36,875	37,708	40,968	38,517	8.6%
MPD	131,650	109,191	94,964	96,078	81,865	81,271	73,751	78,963	-9.3%
DPW Infra	32,251	30,713	33,654	38,979	29,493	30,509	29,968	29,990	-1.8%
DPW Ops	76,418	62,988	54,377	66,728	37,145	44,649	43,138	41,644	-3.4%
DPW Parking	8,411	8,182	6,799	8,206	4,638	5,700	4,576	4,971	-19.7%
DPW Sewer	7,923	6,992	6,966	7,422	3,882	4,284	4,332	4,166	1.1%
DPW Water	16,836	17,611	17,939	19,075	14,094	14,499	14,017	14,203	-3.3%
DPW Total	142,972	128,098	121,671	143,250	90,423	100,745	97,160	96,109	-3.6%
Big 3	319,037	274,269	253,010	279,734	209,162	219,725	211,878	213,588	-3.6%

Sick Leave by Department	2008	2009	2010	2011	2012	2013	2014	Grand Total
Assessor's Office	3,556	2,343	1,761	2,280	1,585	2,518	2,941	16,984
Board Of Zoning Appeals		40	252	76	38	32	53	491
City Attorney	2,506	2,972	2,383	2,659	2,273	2,902	2,172	17,866
City Treasurer	1,770	788	553	527	1,132	1,422	826	7,017
Common Council-City Clerk	2,291	2,377	2,390	1,702	2,892	1,612	1,583	14,846
Comptroller	2,000	3,401	2,564	2,186	2,268	2,296	2,977	17,691
<b>DCD</b>								
DCD-General Mgmt & Policy De'	5,133	4,016	3,375	2,086	2,034	1,430	1,698	19,771
DCD-Public Housing Programs	5,639	6,201	6,253	4,753	3,344	4,401	2,901	33,492
<b>DCD Total</b>	<b>10,772</b>	<b>10,217</b>	<b>9,627</b>	<b>6,839</b>	<b>5,378</b>	<b>5,831</b>	<b>4,599</b>	<b>53,262</b>
Deferred Compensation Admin	248	13	62	41	46	328	151	888
Dept of Neighborhood Services	13,028	10,451	10,302	9,125	8,234	10,991	10,360	72,491
<b>DER</b>								
DER-Administration Division	520	156	204	160	65	94	141	1,339
DER-Employee Benefits Division	1,448	1,137	666	572	390	490	1,008	5,711
DER-Operations	1,137	1,424	1,771	1,159	1,174	751	784	8,199
<b>DER Total</b>	<b>3,104</b>	<b>2,717</b>	<b>2,640</b>	<b>1,891</b>	<b>1,629</b>	<b>1,334</b>	<b>1,933</b>	<b>15,248</b>
<b>DOA</b>								
DOA Community Block Grant Ad	963	1,114	1,690	1,073	1,885	1,419	1,529	9,672
DOA-Budget & Management Div	279	325	254	306	357	382	398	2,300
DOA-Business Operations Div	1,638	1,667	1,219	1,727	1,983	2,059	1,326	11,619
DOA-Info & Tech Mgmt Div	2,207	2,038	1,021	945	1,117	2,365	3,944	13,636
DOA-Intergovernmental Rel Div	165	122	424	438	136	149	150	1,583
DOA-Office of Sustainability				146	60	100	55	361
<b>DOA Total</b>	<b>5,252</b>	<b>5,265</b>	<b>4,607</b>	<b>4,634</b>	<b>5,537</b>	<b>6,473</b>	<b>7,402</b>	<b>39,170</b>



Sick Leave	2008	2009	2010	2011	2012	2013	2014	
<b>DPW Operations</b>								
DPW Operations Facilities Dev	8,687	6,771				24		15,482
DPW-Operations-Admin	252	82	278	237	483	48	80	1,460
DPW-Operations-Fleet Oper/Dis	12,693	10,792	7,976	11,016	5,165	5,472	5,351	58,464
DPW-Operations-Fleet Service	7,135	5,298	7,970	9,422	4,157	4,381	4,000	42,363
DPW-Oper-Forestry	13,788	11,978	11,573	11,852	7,822	8,235	9,782	75,031
DPW-Oper-Sanitation	33,862	28,067	26,581	34,201	19,519	26,489	23,925	192,644
<b>DPW Operations Total</b>	<b>76,418</b>	<b>62,988</b>	<b>54,377</b>	<b>66,728</b>	<b>37,145</b>	<b>44,649</b>	<b>43,138</b>	<b>385,443</b>
<b>DPW-Admin Services Division</b>	<b>1,135</b>	<b>1,612</b>	<b>1,935</b>	<b>2,841</b>	<b>1,171</b>	<b>1,103</b>	<b>1,129</b>	<b>10,925</b>
<b>DPW Infrastructure</b>								
DPW-Infra-Administration	107	215	292	295	207	414	514	2,043
DPW-Infra-Construction	2,756	3,747	3,289	3,585	1,948	2,499	2,734	20,557
DPW-Infra-Facilities Dev&Mgmt			5,073	6,135	4,996	4,048	3,525	23,776
DPW-Infra-Field Op-Electrical	16,915	12,194	13,207	14,834	13,151	9,742	9,568	89,612
DPW-Infra-Field Op-St/Bridges	10,826	13,045	10,887	12,597	8,076	11,838	11,732	79,000
DPW-Infra-Transportation	1,647	1,512	907	1,533	1,116	1,968	1,895	10,578
<b>DPW Infrastructure Total</b>	<b>32,251</b>	<b>30,713</b>	<b>33,654</b>	<b>38,979</b>	<b>29,493</b>	<b>30,509</b>	<b>29,968</b>	<b>225,566</b>
<b>DPW-Parking</b>	<b>8,411</b>	<b>8,182</b>	<b>6,799</b>	<b>8,206</b>	<b>4,638</b>	<b>5,700</b>	<b>4,576</b>	<b>46,512</b>
<b>DPW Sewer</b>								
DPW-Sewer Maint-Environment	1,427	961	877	1,253	528	374	264	5,683
DPW-Sewer Maint-Underground	6,496	6,031	6,089	6,169	3,355	3,910	4,069	36,118
<b>DPW Sewer Total</b>	<b>7,923</b>	<b>6,992</b>	<b>6,966</b>	<b>7,422</b>	<b>3,882</b>	<b>4,284</b>	<b>4,332</b>	<b>41,801</b>
<b>DPW Water</b>								
DPW-Water Works-Business	2,143	4,135	3,003	5,293	3,621	4,096	5,176	27,467
DPW-Water Works-Distribution	10,215	9,233	8,289	8,118	5,298	5,189	4,745	51,087
DPW-Water Works-Engineering	288	364	271	513	263	446	269	2,414
DPW-Water Works-Plants-Nortf	2,131	1,776	2,600	1,856	2,277	1,997	2,294	14,930
DPW-Water Works-Plants-Soutf	1,582	1,693	3,161	2,808	2,410	2,523	1,299	15,475
DPW-Water Works-Water Quali	477	411	616	488	224	248	235	2,698
<b>DPW Water Total</b>	<b>16,836</b>	<b>17,611</b>	<b>17,939</b>	<b>19,075</b>	<b>14,094</b>	<b>14,499</b>	<b>14,017</b>	<b>114,071</b>
<b>DPW TOTAL</b>	<b>142,972</b>	<b>128,098</b>	<b>121,671</b>	<b>143,250</b>	<b>90,423</b>	<b>100,745</b>	<b>97,160</b>	<b>824,318</b>
<b>Election Commission</b>	<b>71</b>	<b>340</b>	<b>146</b>	<b>393</b>	<b>104</b>	<b>432</b>	<b>112</b>	<b>1,597</b>
<b>Employes' Retirement System</b>	<b>1,669</b>	<b>2,093</b>	<b>1,083</b>	<b>2,515</b>	<b>1,428</b>	<b>2,232</b>	<b>2,447</b>	<b>13,466</b>
<b>Fire and Police Commission</b>	<b>106</b>	<b>135</b>	<b>294</b>	<b>120</b>	<b>235</b>	<b>173</b>	<b>170</b>	<b>1,232</b>
<b>MFD</b>								
Fire Department			61		236	369	786	1,452
Fire-Firefighting Division	40,099	31,763	32,722	35,769	32,949	33,751	37,325	244,378
Fire-Supporting Services	4,317	5,218	3,592	4,637	3,690	3,588	2,857	27,898
<b>MFD Total</b>	<b>44,416</b>	<b>36,981</b>	<b>36,375</b>	<b>40,406</b>	<b>36,875</b>	<b>37,708</b>	<b>40,968</b>	<b>273,727</b>
<b>Health Department</b>	<b>19,933</b>	<b>15,181</b>	<b>17,762</b>	<b>15,076</b>	<b>12,638</b>	<b>10,371</b>	<b>9,988</b>	<b>100,949</b>
<b>Library</b>								
Library-Admin Services	4,956	3,987	3,582	4,423	3,987	4,875	3,847	29,656
Library-Central Library	4,103	4,525	4,223	5,327	4,830	4,813	4,017	31,837
Library-Neigh Lib & Ext Serv	5,764	5,706	4,894	4,723	3,237	3,262	3,605	31,191
<b>Library Total</b>	<b>14,824</b>	<b>14,218</b>	<b>12,699</b>	<b>14,473</b>	<b>12,054</b>	<b>12,949</b>	<b>11,469</b>	<b>92,684</b>
<b>Mayor's Office</b>	<b>517</b>	<b>559</b>	<b>448</b>	<b>549</b>	<b>421</b>	<b>164</b>	<b>186</b>	<b>2,844</b>
<b>Municipal Court</b>	<b>2,871</b>	<b>3,385</b>	<b>2,202</b>	<b>1,788</b>	<b>1,462</b>	<b>1,341</b>	<b>1,747</b>	<b>14,796</b>
<b>MPD</b>								
Police Department						432	73,751	74,183
Police-Administration/Serv	44,671	36,421	29,545	32,871	23,637	23,301		190,445
Police-Operations	86,979	72,770	65,419	63,207	58,228	57,539		404,143
<b>MPD Total</b>	<b>131,650</b>	<b>109,191</b>	<b>94,964</b>	<b>96,078</b>	<b>81,865</b>	<b>81,271</b>	<b>73,751</b>	<b>668,771</b>
<b>Port of Milwaukee</b>	<b>760</b>	<b>949</b>	<b>1,952</b>	<b>1,145</b>	<b>753</b>	<b>813</b>	<b>1,036</b>	<b>7,408</b>
<b>Unified Call Center</b>				<b>24</b>	<b>268</b>			<b>292</b>
<b>Grand Total</b>	<b>404,312</b>	<b>351,713</b>	<b>326,736</b>	<b>347,776</b>	<b>269,536</b>	<b>283,938</b>	<b>274,028</b>	<b>2,258,038</b>

<b>Sick Leave</b>	<b>2008</b>	<b>2009</b>	<b>2010</b>	<b>2011</b>	<b>2012</b>	<b>2013</b>	<b>2014</b>	
<b>Sick Leave by Department</b>	<b>2008</b>	<b>2009</b>	<b>2010</b>	<b>2011</b>	<b>2012</b>	<b>2013</b>	<b>2014</b>	<b>Grand Total</b>
Assessor's Office	3,556	2,343	1,761	2,280	1,585	2,518	2,941	16,984
Board Of Zoning Appeals		40	252	76	38	32	53	491
City Attorney	2,506	2,972	2,383	2,659	2,273	2,902	2,172	17,866
City Treasurer	1,770	788	553	527	1,132	1,422	826	7,017
Common Council-City Clerk	2,291	2,377	2,390	1,702	2,892	1,612	1,583	14,846
Comptroller	2,000	3,401	2,564	2,186	2,268	2,296	2,977	17,691
DCD-General Mgmt & Policy Dev	5,133	4,016	3,375	2,086	2,034	1,430	1,698	19,771
DCD-Public Housing Programs	5,639	6,201	6,253	4,753	3,344	4,401	2,901	33,492
Deferred Compensation Admin	248	13	62	41	46	328	151	888
Dept of Neighborhood Services	13,028	10,451	10,302	9,125	8,234	10,991	10,360	72,491
DER-Administration Division	520	156	204	160	65	94	141	1,339
DER-Employee Benefits Division	1,448	1,137	666	572	390	490	1,008	5,711
DER-Operations	1,137	1,424	1,771	1,159	1,174	751	784	8,199
DOA Community Block Grant Adm	963	1,114	1,690	1,073	1,885	1,419	1,529	9,672
DOA-Budget & Management Div	279	325	254	306	357	382	398	2,300
DOA-Business Operations Div	1,638	1,667	1,219	1,727	1,983	2,059	1,326	11,619
DOA-Info & Tech Mgmt Div	2,207	2,038	1,021	945	1,117	2,365	3,944	13,636
DOA-Intergovernmental Rel Div	165	122	424	438	136	149	150	1,583
DOA-Office of Sustainability				146	60	100	55	361
DPW Operations Facilities Dev	8,687	6,771				24		15,482
DPW-Admin Services Division	1,135	1,612	1,935	2,841	1,171	1,103	1,129	10,925
DPW-Infra-Administration	107	215	292	295	207	414	514	2,043
DPW-Infra-Construction	2,756	3,747	3,289	3,585	1,948	2,499	2,734	20,557
DPW-Infra-Facilities Dev&Mgmt			5,073	6,135	4,996	4,048	3,525	23,776
DPW-Infra-Field Op-Electrical	16,915	12,194	13,207	14,834	13,151	9,742	9,568	89,612
DPW-Infra-Field Op-St/Bridges	10,826	13,045	10,887	12,597	8,076	11,838	11,732	79,000
DPW-Infra-Transportation	1,647	1,512	907	1,533	1,116	1,968	1,895	10,578
DPW-Operations-Admin	252	82	278	237	483	48	80	1,460
DPW-Operations-Fleet Oper/Disp	12,693	10,792	7,976	11,016	5,165	5,472	5,351	58,464
DPW-Operations-Fleet Service	7,135	5,298	7,970	9,422	4,157	4,381	4,000	42,363
DPW-Oper-Forestry	13,788	11,978	11,573	11,852	7,822	8,235	9,782	75,031
DPW-Oper-Sanitation	33,862	28,067	26,581	34,201	19,519	26,489	23,925	192,644
DPW-Parking	8,411	8,182	6,799	8,206	4,638	5,700	4,576	46,512
DPW-Sewer Maint-Environmental	1,427	961	877	1,253	528	374	264	5,683
DPW-Sewer Maint-Underground	6,496	6,031	6,089	6,169	3,355	3,910	4,069	36,118
DPW-Water Works-Business	2,143	4,135	3,003	5,293	3,621	4,096	5,176	27,467
DPW-Water Works-Distribution	10,215	9,233	8,289	8,118	5,298	5,189	4,745	51,087
DPW-Water Works-Engineering	288	364	271	513	263	446	269	2,414
DPW-Water Works-Plants-North	2,131	1,776	2,600	1,856	2,277	1,997	2,294	14,930
DPW-Water Works-Plants-South	1,582	1,693	3,161	2,808	2,410	2,523	1,299	15,475
DPW-Water Works-Water Quality	477	411	616	488	224	248	235	2,698
Election Commission	71	340	146	393	104	432	112	1,597
Employees' Retirement System	1,669	2,093	1,083	2,515	1,428	2,232	2,447	13,466
Fire and Police Commission	106	135	294	120	235	173	170	1,232
Fire Department			61		236	369	786	1,452
Fire-Firefighting Division	40,099	31,763	32,722	35,769	32,949	33,751	37,325	244,378
Fire-Supporting Services	4,317	5,218	3,592	4,637	3,690	3,588	2,857	27,898
Health Department	19,933	15,181	17,762	15,076	12,638	10,371	9,988	100,949
Library-Admin Services	4,956	3,987	3,582	4,423	3,987	4,875	3,847	29,656
Library-Central Library	4,103	4,525	4,223	5,327	4,830	4,813	4,017	31,837
Library-Neigh Lib & Ext Serv	5,764	5,706	4,894	4,723	3,237	3,262	3,605	31,191
Mayor's Office	517	559	448	549	421	164	186	2,844
Municipal Court	2,871	3,385	2,202	1,788	1,462	1,341	1,747	14,796
Police Department						432	73,751	74,183
Police-Administration/Serv	44,671	36,421	29,545	32,871	23,637	23,301		190,445
Police-Operations	86,979	72,770	65,419	63,207	58,228	57,539		404,143

<b>Sick Leave</b>	<b>2008</b>	<b>2009</b>	<b>2010</b>	<b>2011</b>	<b>2012</b>	<b>2013</b>	<b>2014</b>	
Port of Milwaukee	760	949	1,952	1,145	753	813	1,036	7,408
Unified Call Center				24	268			292
<b>Grand Total</b>	<b>404,312</b>	<b>351,713</b>	<b>326,736</b>	<b>347,776</b>	<b>269,536</b>	<b>283,938</b>	<b>274,028</b>	<b>2,258,038</b>

Sick Leave	2008	2009	2010	2011	2012	2013	2014	
<b>FMLA Leave (Sick &amp; Vac)</b>	<b>2008</b>	<b>2009</b>	<b>2010</b>	<b>2011</b>	<b>2012</b>	<b>2013</b>	<b>2014</b>	<b>Grand Total</b>
Assessor's Office	143	195	72	147	38	50	140	784
City Attorney	402	855	434	496	635	324	493	3,640
City Treasurer	68	208	61		35	313	32	717
Common Council-City Clerk	650	417	586	795	1,388	651	934	5,420
Comptroller	80	210	604	457	257	451	255	2,312
<b>DCD</b>								
DCD-General Mgmt & Policy De'	1,457	1,550	914	1,697	1,549	598	1,337	9,102
DCD-Public Housing Programs	901	1,193	526	630	884	1,014	1,452	6,600
<b>DCD Total</b>	<b>2,358</b>	<b>2,743</b>	<b>1,440</b>	<b>2,327</b>	<b>2,434</b>	<b>1,612</b>	<b>2,789</b>	<b>15,702</b>
<b>Dept of Neighborhood Services</b>	<b>1,324</b>	<b>2,403</b>	<b>1,112</b>	<b>1,367</b>	<b>1,587</b>	<b>1,447</b>	<b>2,686</b>	<b>11,927</b>
<b>DER</b>								
DER-Administration Division	34	6		23	51	193	125	433
DER-Employee Benefits Division	232	106	89	152	98		24	701
DER-Operations	46	135	122	138	426	199	293	1,359
<b>DER Total</b>	<b>312</b>	<b>247</b>	<b>211</b>	<b>314</b>	<b>574</b>	<b>393</b>	<b>442</b>	<b>2,493</b>
<b>DOA</b>								
DOA Community Block Grant Ad	24	160	53	5			189	431
DOA-Budget & Management Div	348	779	301	188	135	136	163	2,050
DOA-Business Operations Div			80	44	149		392	665
DOA-Info & Tech Mgmt Div	149	105	158	4	166	504	219	1,304
DOA-Intergovernmental Rel Div			240					240
DOA-Office of Sustainability						104		104
<b>DOA Total</b>	<b>521</b>	<b>1,044</b>	<b>831</b>	<b>241</b>	<b>450</b>	<b>744</b>	<b>962</b>	<b>4,793</b>
<b>DPW Operations</b>								
DPW Operations Facilities Dev	1,024	1,019						2,043
DPW-Operations-Admin	213	25	162	52	175	24	28	679
DPW-Operations-Fleet Oper/Dis	783	1,633	1,252	1,447	2,411	899	1,200	9,626
DPW-Operations-Fleet Service	911	1,213	1,361	1,382	947	1,835	1,220	8,868
DPW-Oper-Forestry	4,766	4,966	3,304	5,277	4,323	4,987	3,089	30,711
DPW-Oper-Sanitation	3,914	3,097	4,014	3,792	3,702	3,377	5,902	27,797
<b>DPW Operations Total</b>	<b>11,611</b>	<b>11,952</b>	<b>10,094</b>	<b>11,949</b>	<b>11,557</b>	<b>11,122</b>	<b>11,439</b>	<b>79,723</b>
<b>DPW-Admin Services Division</b>	<b>1,266</b>	<b>2,550</b>	<b>1,360</b>	<b>1,416</b>	<b>951</b>	<b>864</b>	<b>892</b>	<b>9,299</b>
<b>DPW Infrastructure</b>								
DPW-Infra-Administration	209	221	388	362	162	189	26	1,556
DPW-Infra-Construction	1,186	1,009	1,082	936	171	844	699	5,927
DPW-Infra-Facilities Dev&Mgmt			1,170	1,409	1,376	1,170	891	6,016
DPW-Infra-Field Op-Electrical	1,031	1,394	590	1,769	789	1,815	1,905	9,292
DPW-Infra-Field Op-St/Bridges	2,290	2,503	2,737	2,786	3,650	2,692	3,167	19,824
DPW-Infra-Transportation	1,800	2,424	1,795	1,755	1,624	1,688	1,444	12,528
<b>DPW Infrastructure Total</b>	<b>6,516</b>	<b>7,550</b>	<b>7,760</b>	<b>9,017</b>	<b>7,772</b>	<b>8,398</b>	<b>8,132</b>	<b>55,144</b>
<b>DPW-Parking</b>	<b>2,183</b>	<b>2,013</b>	<b>1,393</b>	<b>2,186</b>	<b>1,718</b>	<b>1,592</b>	<b>1,789</b>	<b>12,875</b>
<b>DPW Sewer</b>								
DPW-Sewer Maint-Environment	921	962	1,326	673	616	228	140	4,865
DPW-Sewer Maint-Underground	1,564	1,740	2,014	3,112	1,335	1,218	861	11,845
<b>DPW Sewer Total</b>	<b>2,485</b>	<b>2,702</b>	<b>3,340</b>	<b>3,785</b>	<b>1,951</b>	<b>1,446</b>	<b>1,001</b>	<b>16,710</b>
<b>DPW Water</b>								
DPW-Water Works-Business	1,779	1,798	723	1,794	2,166	1,502	2,038	11,799
DPW-Water Works-Distribution	3,063	2,718	2,810	2,176	2,030	2,234	2,316	17,347
DPW-Water Works-Engineering	656	796	401	361	375	437	1,013	4,038
DPW-Water Works-Plants-Nortf	1,315	2,325	2,126	1,739	1,339	1,909	2,236	12,988
DPW-Water Works-Plants-Soutf	1,927	1,991	1,599	1,866	1,369	1,938	2,202	12,891
DPW-Water Works-Water Quali	114	212	114	110	584	404	312	1,850
<b>DPW Water Total</b>	<b>8,854</b>	<b>9,839</b>	<b>7,773</b>	<b>8,044</b>	<b>7,863</b>	<b>8,425</b>	<b>10,116</b>	<b>60,913</b>
<b>Election Commission</b>	<b>299</b>	<b>145</b>	<b>40</b>	<b>62</b>	<b>46</b>	<b>31</b>	<b>43</b>	<b>665</b>
<b>Employes' Retirement System</b>	<b>120</b>	<b>111</b>	<b>499</b>	<b>121</b>	<b>170</b>	<b>24</b>	<b>507</b>	<b>1,552</b>
<b>Fire and Police Commission</b>	<b>15</b>				<b>32</b>			<b>47</b>

<b>Sick Leave</b>	<b>2008</b>	<b>2009</b>	<b>2010</b>	<b>2011</b>	<b>2012</b>	<b>2013</b>	<b>2014</b>	
<b>MFD</b>								
Fire Department			20		58	232		310
Fire-Firefighting Division	8,935	8,473	7,322	8,725	10,194	8,933	14,332	66,914
Fire-Supporting Services	799	1,344	675	248	487	731	1,209	5,493
<b>MFD Total</b>	<b>9,734</b>	<b>9,817</b>	<b>8,017</b>	<b>8,973</b>	<b>10,739</b>	<b>9,896</b>	<b>15,541</b>	<b>72,717</b>
<b>Health Department</b>	<b>4,922</b>	<b>5,399</b>	<b>6,156</b>	<b>6,263</b>	<b>3,619</b>	<b>5,673</b>	<b>7,353</b>	<b>39,385</b>
<b>Library</b>								
Library-Admin Services	1,816	2,895	2,657	2,810	1,933	1,788	1,324	15,222
Library-Central Library	1,469	2,029	2,015	2,698	1,625	1,838	2,233	13,906
Library-Neigh Lib & Ext Serv	3,385	1,965	1,995	1,959	1,883	951	1,388	13,526
<b>Library Total</b>	<b>6,670</b>	<b>6,889</b>	<b>6,666</b>	<b>7,467</b>	<b>5,441</b>	<b>4,578</b>	<b>4,944</b>	<b>42,653</b>
<b>Municipal Court</b>	<b>346</b>	<b>484</b>	<b>444</b>	<b>802</b>	<b>842</b>	<b>984</b>	<b>1,206</b>	<b>5,108</b>
<b>MPD</b>								
Police Department						51	44,001	44,052
Police-Administration/Serv	6,908	8,988	11,110	11,374	11,109	12,386		61,875
Police-Operations	19,290	20,109	19,466	24,122	27,109	28,062		138,157
<b>MPD Total</b>	<b>26,198</b>	<b>29,097</b>	<b>30,576</b>	<b>35,496</b>	<b>38,218</b>	<b>40,499</b>	<b>44,001</b>	<b>244,084</b>
<b>Port of Milwaukee</b>	<b>8</b>		<b>162</b>	<b>132</b>	<b>24</b>	<b>125</b>	<b>8</b>	<b>459</b>
<b>Unified Call Center</b>					<b>74</b>			<b>74</b>
<b>Grand Total</b>	<b>87,083</b>	<b>96,869</b>	<b>89,630</b>	<b>101,855</b>	<b>98,412</b>	<b>99,641</b>	<b>115,704</b>	<b>689,194</b>

**Worker's Compensation Metric Summary**

	2006	2007	2008	2009	2010	2011	2012	2013	% Change Over Prior	3 Yr Avg
<b>City Wide Data</b>										
<b>Gen Claim/OSHA Data</b>										
All Claims	3,097	2,806	2,688	2,345	2,225	1,903	1,869	1,979	5.9%	1,917
Indemnity & Medical Claims	1,835	1,708	1,686	1,470	1,402	1,193	1,208	1,203	-0.4%	1,201
Recordable Cases	1,140	1,221	1,073	927	872	744	656	674	2.7%	691
Incidence Rate	17.75	18.31	16.01	14.22	13.82	11.93	10.50	10.82	3.0%	11
Lost Workdays	21,279	19,488	24,817	15,441	16,421	15,432	12,995	13,215	1.7%	13,881
Injury Hours	197,972	206,227	217,584	152,596	165,083	124,874	111,250	90,922	-18.3%	109,015
Injury Pay	\$3,618,117	\$3,758,599	\$4,096,525	\$3,062,781	\$3,326,928	\$2,607,269	\$2,378,455	\$1,859,517	-21.8%	\$2,281,747
WC Expenditures	\$11,755,087	\$12,259,304	\$13,737,635	\$11,575,195	\$12,444,770	\$11,362,821	\$14,575,235	\$12,476,141	-14.4%	\$12,804,732
Cost Per Claim	\$3,796	\$4,369	\$5,111	\$4,936	\$5,593	\$5,971	\$7,798	\$6,304	-19.2%	\$6,691
Cost Per Med/Ind Claims	\$2,047	\$2,436	-\$219	-\$211	\$3,169	\$2,882	\$2,626	\$3,485	32.7%	\$2,998
Cost Per Recordable Case	\$3,295	\$3,408	-\$344	-\$335	\$5,095	\$4,622	\$4,835	\$6,220	28.6%	\$5,226
<b>WC Expenditures &amp; Payroll</b>										
WC Costs as % of Payroll	2.9%	2.9%	3.2%	2.6%	2.9%	2.7%	3.5%	0.0%	-100.0%	2.1%
<b>Claim Type</b>										
Indemnity	914	881	845	689	649	559	513	494	-3.7%	522
% of Med/Ind	49.8%	51.6%	50.1%	46.9%	46.3%	46.9%	42.5%	41.1%	-3.3%	43.5%
Medical	921	827	841	781	753	634	695	709	2.0%	679
% of Med/Ind	50.2%	48.4%	49.9%	53.1%	53.7%	53.1%	57.5%	58.9%	2.4%	56.5%
No Doctor	1,262	1,098	1,002	875	823	710	661	776	17.4%	716
<b>Claim Incidence/Frequency Rate (per FTE)</b>										
All Claims	40.5%	36.1%	34.7%	30.9%	30.5%	26.0%	25.7%	27.5%	7.2%	26.4%
Indemnity Claims	12.0%	11.3%	10.9%	9.1%	8.9%	7.6%	7.0%	6.9%	-2.5%	7.2%
Medical Claims	12.1%	10.6%	10.9%	10.3%	10.3%	8.7%	9.5%	9.9%	3.3%	9.4%
<b>Claim Status</b>										
Percentage of Open Claims	1.0%	1.6%	3.2%	6.5%	19.0%	15.0%	10.4%	11.4%	9.5%	12.3%
Percentage of Open + Re-O	1.5%	2.4%	4.4%	9.4%	21.4%	18.4%	13.4%	14.7%	10.3%	15.5%
<b>Report Lag Time (% of Claims w/Notify Time &gt; 5 Weekdays)</b>										
Notify Dept (Goal ≤ 5%)				4.6%	3.8%	3.4%	3.3%	3.8%	15.5%	3.5%
Notify DER/WC (Goal ≤ 5%)				31.1%	29.5%	31.1%	27.2%	20.5%	-24.6%	26.3%

**Worker's Compensation Metric Summary**

	2006	2007	2008	2009	2010	2011	2012	2013	% Change Over Prior	3 Yr Avg
<b>MFD</b>										
<b>Gen Claim/OSHA Data</b>										
Claims	973	725	627	566	614	432	441	368	-16.6%	414
Indemnity & Medical Claims	448	387	380	355	395	264	295	240	-18.6%	266
Recordable Cases	346	364	294	270	298	197	195	159	-18.5%	184
Incidence Rate	29.36	29.83	24.55	22.49	26.99	17.85	17.79	14.51	-18.4%	17
Lost Workdays	8,821	4,684	10,136	3,625	5,755	4,614	4,652	3,850	-17.2%	4,372
Injury Hours	98,590	92,937	107,094	72,401	86,670	52,670	43,749	35,506	-18.8%	43,975
Injury Pay	\$1,721,210	\$1,649,650	\$1,956,139	\$1,442,241	\$1,723,367	\$1,018,141	\$882,209	\$738,214	-16.3%	\$879,521
<b>WC Expenditures &amp; Payroll</b>										
MFD WC Expenditures	\$2,756,748	\$2,422,153	\$3,434,665	\$2,890,684	\$3,613,992	\$3,168,659	\$3,290,786	\$0	-100.0%	
WC Costs as % of Payroll	3.8%	3.4%	4.5%	3.8%	5.1%	4.5%	4.7%	0.0%	-100.0%	3.1%
<b>Claim Type</b>										
Indemnity	285	245	242	226	243	161	179	128	-28.5%	156
% of Med/Ind	63.6%	63.3%	63.7%	63.7%	61.5%	61.0%	60.7%	53.3%	-12.1%	58.3%
Medical	163	142	138	129	152	103	116	104	-10.3%	108
% of Med/Ind	36.4%	36.7%	36.3%	36.3%	38.5%	39.0%	39.3%	43.3%	10.2%	40.6%
No Doctor	525	338	247	211	219	168	146	136	-6.8%	150
<b>Claim Incidence/Frequency Rate (per FTE)</b>										
All Claims	82.7%	63.0%	55.3%	51.6%	59.4%	41.8%	43.5%	36.3%	-16.7%	40.5%
Indemnity Claims	24.2%	21.3%	21.4%	20.6%	23.5%	15.6%	17.7%	12.6%	-28.6%	15.3%
Medical Claims	13.9%	12.3%	12.2%	11.8%	14.7%	10.0%	11.4%	10.2%	-10.4%	10.6%
<b>Report Lag Time (% of Claims w/Notify Time &gt; 5 Weekdays)</b>										
Notify Dept (Goal ≤ 5%)				3.7%	2.5%	3.8%	5.4%	5.6%	3.3%	4.9%
Notify DER/WC (Goal ≤ 5%)				36.3%	31.4%	37.5%	17.3%	10.8%	-37.7%	21.9%

**Worker's Compensation Metric Summary**

	2006	2007	2008	2009	2010	2011	2012	2013	% Change Over Prior	3 Yr Avg
<b>MPD</b>										
<b>Gen Claim/OSHA Data</b>										
Claims	920	891	865	775	663	636	663	680	2.6%	660
Indemnity & Medical Claims	598	507	515	468	390	360	400	391	-2.3%	384
Recordable Cases	300	280	251	244	177	166	164	145	-11.6%	158
Incidence Rate	13.55	12	10.69	10.78	7.88	7.36	7.44	6.63	-10.9%	7
Lost Workdays	4,017	2,316	3,441	3,885	2,833	3,726	3,629	2,064	-43.1%	3,140
Injury Hours	34,252	26,238	35,116	32,241	29,201	34,540	40,082	23,008	-42.6%	32,543
Injury Pay	\$764,525	\$593,130	\$824,790	\$786,083	\$719,344	\$872,604	\$1,038,491	\$630,555	-39.3%	\$847,217
<b>WC Expenditures &amp; Payroll</b>										
MPD WC Expenditures	\$2,685,053	\$2,454,890	\$3,711,633	\$3,123,786	\$2,896,798	\$3,819,332	\$4,456,461	\$0	-100.0%	
WC Costs as % of Payroll	1.7%	1.5%	2.3%	1.8%	1.7%	2.3%	2.7%	0.0%	-100.0%	1.6%
<b>Claim Type</b>										
Indemnity	231	184	176	139	132	122	109	104	-4.6%	112
% of Med/Ind	38.6%	36.3%	34.2%	29.7%	33.8%	33.9%	27.3%	26.6%	-2.4%	29.2%
Medical	367	323	339	329	258	238	291	287	-1.4%	272
% of Med/Ind	61.4%	63.7%	65.8%	70.3%	66.2%	66.1%	72.8%	73.4%	0.9%	70.8%
No Doctor	322	384	350	307	273	276	263	289	9.9%	276
<b>Claim Incidence/Frequency Rate (per FTE)</b>										
All Claims	34.1%	31.2%	29.8%	26.8%	24.1%	23.0%	24.1%	24.9%	3.6%	24.0%
Indemnity Claims	8.6%	6.5%	6.1%	4.8%	4.8%	4.4%	4.0%	3.8%	-3.6%	4.1%
Medical Claims	13.6%	11.3%	11.7%	11.4%	9.4%	8.6%	10.6%	10.5%	-0.3%	9.9%
<b>Report Lag Time (% of Claims w/Notify Time &gt; 5 Weekdays)</b>										
Notify Dept (Goal ≤ 5%)				5.8%	3.8%	2.8%	2.8%	2.3%	-16.3%	2.6%
Notify DER/WC (Goal ≤ 5%)				29.7%	27.2%	35.0%	43.0%	30.4%	-29.2%	36.1%



**Worker's Compensation Metric Summary**

	2006	2007	2008	2009	2010	2011	2012	2013	% Change Over Prior	3 Yr Avg
<b>DPW All Divisions</b>										
<b>Gen Claim/OSHA Data</b>										
Claims	1069	1044	1075	887	862	740	688	839	21.9%	756
Indemnity & Medical Claims	707	738	727	587	567	511	466	527	13.1%	501
Recordable Cases	443	509	474	374	359	343	264	317	20.1%	308
Incidence Rate	25.74	28.74	26.01	21.25	20.99	20.81	15.77	18.88	19.7%	18
Lost Workdays	8,032	11,852	10,341	7,567	7,061	6,822	3,895	6,626	70.1%	5,781
Injury Hours	61,355	76,834	66,553	47,064	44,198	35,007	22,379	27,546	23.1%	28,311
Injury Pay	\$1,062,630	\$1,335,152	\$1,164,474	\$814,767	\$786,257	\$653,849	\$341,124	\$411,757	20.7%	\$468,910
<b>WC Expenditures &amp; Payroll</b>										
DPW WC Expenditures	\$4,911,562	\$5,384,606	\$6,282,452	\$5,287,441	\$5,579,227	\$4,231,682	\$5,639,407	\$0	-100.0%	
WC Costs as % of Payroll	4.8%	5.2%	5.9%	4.9%	5.2%	4.2%	5.8%	0.0%	-100.0%	3.3%
<b>Claim Type</b>										
Indemnity	366	426	394	307	255	253	207	241	16.4%	234
% of Med/Ind	51.8%	57.7%	54.2%	52.3%	45.0%	49.5%	44.4%	45.7%	2.9%	46.6%
Medical	341	312	333	280	312	258	259	286	10.4%	268
% of Med/Ind	48.2%	42.3%	45.8%	47.7%	55.0%	50.5%	55.6%	54.3%	-2.4%	53.4%
No Doctor	362	306	348	300	295	229	222	312	40.5%	254
<b>Claim Incidence/Frequency Rate (per FTE)</b>										
All Claims	50.2%	49.7%	52.3%	43.0%	43.0%	37.2%	34.8%	43.2%	24.4%	38.4%
Indemnity Claims	17.2%	20.3%	19.2%	14.9%	12.7%	12.7%	10.5%	12.4%	18.8%	11.9%
Medical Claims	16.0%	14.9%	16.2%	13.6%	15.6%	13.0%	13.1%	14.7%	12.7%	13.6%
<b>Report Lag Time (% of Claims w/Notify Time &gt; 5 Weekdays)</b>										
Notify Dept (Goal ≤ 5%)				3.7%	4.4%	2.9%	1.9%	3.8%	96.5%	2.9%
Notify DER/WC (Goal ≤ 5%)				27.8%	28.0%	24.3%	20.6%	16.9%	-18.0%	20.6%

**Worker's Compensation Metric Summary**

	2006	2007	2008	2009	2010	2011	2012	2013	% Change Over Prior	3 Yr Avg
<b>DPW OPS</b>										
<b>Gen Claim/OSHA Data</b>										
Claims	690	710	684	524	499	445	392	530	35.2%	456
Indemnity & Medical Claims	468	516	495	349	335	309	271	328	21.0%	303
Recordable Cases	353	388	341	232	219	215	153	217	41.8%	195
Incidence Rate	46.54	48.48	41.14	29.89	33.02	33.76	24.08	33.6	39.5%	30
Lost Workdays	5,967	8,688	7,572	3,977	3,611	3,841	1,781	3,959	122.3%	3,194
Injury Hours	42,343	47,675	44,779	24,840	23,731	18,372	10,838	13,081	20.7%	14,097
Injury Pay	\$720,000	\$821,724	\$798,918	\$422,770	\$420,116	\$344,051	\$168,712	\$197,119	16.8%	\$236,627
<b>WC Expenditures &amp; Payroll</b>										
DPW Ops WC Expenditures	\$3,268,707	\$3,332,959	\$4,266,867	\$3,591,084	\$3,654,676	\$2,432,547	\$3,273,297	\$0	-100.0%	
WC Costs as % of Payroll	7.4%	7.2%	9.0%	7.8%	9.1%	6.6%	9.3%	0.0%	-100.0%	5.3%
<b>Claim Type</b>										
Indemnity	240	299	268	180	148	161	115	152	32.2%	143
% of Med/Ind	34.8%	42.1%	39.2%	34.4%	29.7%	36.2%	29.3%	28.7%	-2.2%	31.4%
Medical	228	217	227	169	187	148	156	176	12.8%	160
% of Med/Ind	33.0%	30.6%	33.2%	32.3%	37.5%	33.3%	39.8%	33.2%	-16.6%	35.4%
No Doctor	222	194	189	175	164	136	121	202	66.9%	153
<b>Claim Incidence/Frequency Rate (per FTE)</b>										
All Claims	76.9%	80.2%	77.8%	60.0%	69.0%	63.6%	54.4%	74.2%	36.4%	64.1%
Indemnity Claims	26.8%	33.8%	30.5%	20.6%	20.5%	23.0%	16.0%	21.3%	33.4%	20.1%
Medical Claims	25.4%	24.5%	25.8%	19.3%	25.8%	21.2%	21.6%	24.6%	13.8%	22.5%
<b>Report Lag Time (% of Claims w/Notify Time &gt; 5 Weekdays)</b>										
Notify Dept (Goal ≤ 5%)				2.9%	2.7%	2.9%	1.8%	2.7%	48.7%	2.5%
Notify DER/WC (Goal ≤ 5%)				19.5%	23.6%	19.4%	18.8%	13.4%	-28.7%	17.2%

**Worker's Compensation Metric Summary**

	2006	2007	2008	2009	2010	2011	2012	2013	% Change Over Prior	3 Yr Avg
<b>DPW INFRA</b>										
<b>Gen Claim/OSHA Data</b>										
Claims	186	172	222	184	199	171	163	170	4.3%	168
Indemnity & Medical Claims	133	120	134	135	136	128	112	112	0.0%	117
Recordable Cases	55	77	81	73	80	78	54	42	-22.2%	58
Incidence Rate	10.37	14.44	18.25	16.57	15.51	15.6	10.45	7.85	-24.9%	11
Lost Workdays	1,480	2,285	1,666	1,716	2,019	1,157	1,207	1,047	-13.3%	1,137
Injury Hours	12,925	13,551	12,744	12,084	8,452	6,053	5,263	3,322	-36.9%	4,879
Injury Pay	\$217,238	\$240,622	\$223,294	\$228,102	\$169,308	\$112,857	\$84,183	\$52,691	-37.4%	\$83,244
<b>WC Expenditures &amp; Payroll</b>										
DPW Infra WC Expenditures	\$844,955	\$1,115,553	\$1,306,319	\$1,099,425	\$1,152,315	\$995,730	\$1,369,652	\$0	-100.0%	
WC Costs as % of Payroll	3.3%	4.3%	4.9%	3.8%	3.4%	3.1%	4.3%	0.0%	-100.0%	2.5%
<b>Claim Type</b>										
Indemnity	74	73	79	68	59	50	53	46	-13.2%	50
% of Med/Ind	39.8%	42.4%	35.6%	37.0%	29.6%	29.2%	32.5%	27.1%	-16.8%	29.6%
Medical	59	47	55	67	77	78	59	66	11.9%	68
% of Med/Ind	31.7%	27.3%	24.8%	36.4%	38.7%	45.6%	36.2%	38.8%	7.3%	40.2%
No Doctor	53	52	88	49	63	43	51	58	13.7%	51
<b>Claim Incidence/Frequency Rate (per FTE)</b>										
All Claims	36.0%	33.4%	43.4%	34.9%	33.4%	28.6%	27.3%	28.5%	4.3%	28.1%
Indemnity Claims	26.8%	33.8%	30.5%	20.6%	20.5%	23.0%	16.0%	21.3%	33.4%	20.1%
Medical Claims	25.4%	24.5%	25.8%	19.3%	25.8%	21.2%	21.6%	24.6%	13.8%	22.5%
<b>Report Lag Time (% of Claims w/Notify Time &gt; 5 Weekdays)</b>										
Notify Dept (Goal ≤ 5%)				5.2%	7.4%	2.3%	0.9%	4.5%	400.0%	2.6%
Notify DER/WC (Goal ≤ 5%)				38.5%	38.2%	26.6%	22.3%	22.3%	0.0%	23.7%

Annual WC Expenditures for Present/Past Claims

From iVos Report	2008	2009	2010	% of Total	2011	% of Total	2012	% of Total	2013	% of Total	2014	% of Total
Assessor's Office				0%	\$0	0%		0%	\$1,678	0%	\$0	0%
City Attorney			\$4,417	0%	-\$12,046	0%	\$8	0%	\$13,223	0%	\$0	0%
City Treasurer			\$354	0%	\$0	0%		0%		0%		0%
CC/City Clerk			\$1,931	0%	\$9	0%	\$648	0%		0%	\$671	0%
Comptroller			\$384	0%	\$442	0%		0%	-\$67	0%	\$0	0%
DOA			\$8,354	0%	\$0	0%	\$703	0%	\$982	0%	\$0	0%
DCD			\$108,166	1%	\$44,813	0%	\$203,555	1%	\$174,309	1%	\$84,607	1%
DER				0%	\$2,696	0%		0%	\$1,969	0%	\$2,423	0%
DNS			\$12,864	0%	\$22,098	0%	\$41,213	0%	\$135,861	1%	\$55,730	0%
Election Commission			\$344	0%	\$0	0%		0%		0%		0%
ERS				0%		0%	\$83	0%	\$1,072	0%	\$1,699	0%
MHD			\$82,641	1%	\$50,164	0%	\$84,402	1%	\$237,567	2%	\$110,748	1%
Library			\$117,017	1%	\$132,696	1%	\$111,045	1%	\$51,770	0%	\$74,179	1%
Mayor's Office				0%	\$0	0%		0%		0%		0%
Municipal Court			\$921	0%	\$26	0%	\$58,457	0%	\$5,221	0%	\$8,622	0%
Null/NA				0%	\$1,143	0%	\$32,654	0%	\$51,243	0%	\$54,547	0%
Police Annuity & Benefit				0%	\$8	0%		0%		0%		0%
Port				0%	\$2,129	0%	\$5,493	0%	\$22,898	0%	\$3,576	0%
MFD	\$3,434,665	\$2,890,684	\$3,613,992	<b>29%</b>	\$3,168,659	<b>28%</b>	\$3,290,786	<b>24%</b>	\$2,986,754	<b>23%</b>	\$1,944,357	<b>16%</b>
MPD	\$3,711,633	\$3,123,786	\$2,896,798	<b>23%</b>	\$3,819,332	<b>33%</b>	\$4,456,461	<b>32%</b>	\$3,643,719	<b>28%</b>	\$3,784,701	<b>32%</b>
DPW Admin	\$38	\$32	\$900	0%	\$468	0%	\$162	0%	\$0	0%	\$51,194	0%
DPW Infra	\$1,306,319	\$1,099,425	\$1,152,315	9%	\$995,730	9%	\$1,369,652	10%	\$1,538,036	12%	\$1,460,321	12%
DPW Ops	\$4,266,867	\$3,591,084	\$3,654,676	<b>29%</b>	\$2,432,547	<b>21%</b>	\$3,273,297	<b>24%</b>	\$3,003,977	<b>23%</b>	\$3,412,772	<b>29%</b>
DPW Gen 570/591/531	\$5,387	\$4,534		0%	\$2,093	0%		0%	\$3,219	0%	\$1,993	0%
DPW Parking	\$133,313	\$112,199	\$55,876	0%	\$121,006	1%	\$211,923	2%	\$93,967	1%	\$46,685	0%
DPW Sewer	\$223,684	\$188,257	\$353,929	3%	\$243,301	2%	\$145,607	1%	\$393,627	3%	\$120,807	1%
DPW Water	\$346,844	\$291,911	\$361,530	3%	\$436,536	4%	\$638,766	5%	\$749,196	6%	\$655,058	6%
DPW Total	\$6,282,452	\$5,287,441	\$5,579,227	<b>45%</b>	\$4,231,682	<b>37%</b>	\$5,639,407	<b>40%</b>	\$5,782,021	<b>44%</b>	\$5,748,831	<b>48%</b>
<b>Total FMIS Expenditures</b>	<b>\$13,737,635</b>	<b>\$11,575,195</b>	<b>\$12,444,770</b>	<b>100%</b>	<b>\$11,362,821</b>	<b>100%</b>	<b>\$14,575,235</b>	<b>100%</b>	<b>\$12,476,141</b>	<b>100%</b>	<b>\$10,102,568</b>	<b>100%</b>
iVos Expendt Pd in Period	\$13,911,677	\$11,708,354	\$12,427,409		\$11,463,850		\$13,924,914		\$13,110,219		\$11,874,690	
Current Year Expendt			\$4,442,751	36%	\$3,438,730	30%	\$3,172,052	23%	\$4,192,177	32%	\$4,034,662	34%
Prior Year Expendt			\$7,984,658	64%	\$8,025,120	70%	\$10,752,862	77%	\$8,918,042	68%	\$7,840,028	66%

WC Costs (past & present) as Percentage of Dept Gross Payroll

	2008	2009	2010	2011	2012	2013	2014
MFD	4.5%	3.8%	5.1%	4.5%	4.7%	4.3%	2.9%
MPD	2.3%	1.8%	1.7%	2.3%	2.7%	2.2%	2.3%
DPW Admin			0.0%	0.0%	0.0%	0.0%	2.1%
DPW Infra	4.9%	3.8%	3.4%	3.1%	4.3%	4.7%	4.4%
DPW Ops	9.0%	7.8%	9.1%	6.6%	9.3%	8.3%	9.0%
DPW Parking			1.1%	2.6%	4.8%	2.2%	1.1%
DPW Sewer			5.3%	4.1%	2.6%	7.9%	2.4%
DPW Water			0.3%	0.4%	0.7%	0.8%	0.7%
DPW Total	5.9%	4.9%	5.2%	4.2%	5.8%	5.9%	5.7%
All City	3.2%	2.6%	2.9%	2.7%	3.5%	3.0%	2.4%

WC Metrics: WC Costs and Payroll

Gross Payroll (Excludes RACM)

From HRMS	2008	2009	2010	2011	2012	2013	2014					
Assessor's Office			\$2,835,969	1%	\$2,670,852	1%	\$2,561,868	1%	\$2,638,396	1%	\$2,785,458	1%
Board Of Zoning Appeals			\$207,238	0%	\$192,506	0%	\$177,546	0%	\$188,052	0%	\$190,163	0%
City Attorney			\$5,510,827	1%	\$4,958,752	1%	\$5,007,338	1%	\$4,944,987	1%	\$5,041,380	1%
City Treasurer			\$1,623,653	0%	\$1,737,253	0%	\$1,427,996	0%	\$1,350,778	0%	\$1,433,238	0%
Common Council-City Clerk			\$5,244,578	1%	\$5,148,109	1%	\$5,168,967	1%	\$4,998,468	1%	\$5,185,837	1%
Comptroller			\$3,834,955	1%	\$3,810,233	1%	\$3,617,377	1%	\$3,541,249	1%	\$3,669,127	1%
DCD-General Mgmt & Policy Dev			\$4,565,965	1%	\$4,220,907	1%	\$4,285,780	1%	\$3,403,759	1%	\$3,797,363	1%
DCD-Public Housing Programs			\$3,308,364	1%	\$2,724,445	1%	\$2,560,689	1%	\$2,347,416	1%	\$1,967,143	0%
<b>DCD Subtotal</b>			<b>\$7,874,329</b>	<b>2%</b>	<b>\$6,945,352</b>	<b>2%</b>	<b>\$6,846,468</b>	<b>2%</b>	<b>\$5,751,175</b>	<b>1%</b>	<b>\$5,764,506</b>	<b>1%</b>
Deferred Compensation Amin			\$130,844	0%	\$126,783	0%	\$127,594	0%	\$127,903	0%	\$130,057	0%
Dept of Neighborhood Services			\$10,255,844	2%	\$10,315,840	2%	\$10,845,488	3%	\$12,559,628	3%	\$12,841,564	3%
DER-Administration Division			\$379,843	0%	\$394,277	0%	\$347,494	0%	\$355,853	0%	\$372,755	0%
DER-Employee Benefits Division			\$1,029,625	0%	\$998,573	0%	\$1,011,836	0%	\$979,349	0%	\$1,040,941	0%
DER-Operations			\$1,594,157	0%	\$1,511,065	0%	\$1,448,876	0%	\$1,405,315	0%	\$1,687,507	0%
<b>DER Subtotal</b>			<b>\$3,003,624</b>	<b>1%</b>	<b>\$2,903,915</b>	<b>1%</b>	<b>\$2,808,205</b>	<b>1%</b>	<b>\$2,740,517</b>	<b>1%</b>	<b>\$3,101,203</b>	<b>1%</b>
DOA Community Block Grant Admi			\$1,124,092	0%	\$1,089,406	0%	\$1,077,957	0%	\$988,182	0%	\$946,518	0%
DOA-Budget & Management Div			\$1,042,132	0%	\$944,589	0%	\$1,064,738	0%	\$1,008,124	0%	\$1,017,119	0%
DOA-Business Operations Div			\$1,122,580	0%	\$1,048,933	0%	\$1,056,083	0%	\$989,438	0%	\$970,244	0%
DOA-Info & Tech Mgmt Div			\$2,777,128	1%	\$2,619,354	1%	\$2,539,936	1%	\$3,993,696	1%	\$4,066,151	1%
DOA-Intergovernmental Rel Div			\$248,920	0%	\$310,981	0%	\$256,239	0%	\$320,518	0%	\$316,658	0%
DOA-Office of Environ Sustain				0%	\$266,929	0%	\$284,561	0%	\$278,736	0%	\$278,913	0%
<b>DOA Subtotal</b>			<b>\$6,314,852</b>	<b>1%</b>	<b>\$6,280,191</b>	<b>2%</b>	<b>\$6,279,514</b>	<b>2%</b>	<b>\$7,578,695</b>	<b>2%</b>	<b>\$7,595,603</b>	<b>2%</b>
DPW-Admin Services Division			\$3,444,342	1%	\$3,381,915	1%	\$3,093,404	1%	\$2,516,657	1%	\$2,490,108	1%
DPW-Infra-Administration			\$637,854	0%	\$633,352	0%	\$605,592	0%	\$648,226	0%	\$649,419	0%
DPW-Infra-Construction			\$4,967,557	1%	\$4,414,803	1%	\$4,170,612	1%	\$4,247,451	1%	\$4,426,367	1%
DPW-Infra-Facilities Developmt			\$5,335,190	1%	\$4,416,667	1%	\$4,294,070	1%	\$4,133,973	1%	\$2,861,453	1%
DPW-Infra-Field Op-Electrical			\$9,394,947	2%	\$9,407,620	2%	\$9,072,053	2%	\$9,133,417	2%	\$10,358,986	3%
DPW-Infra-Field Op-St/Bridges			\$9,212,689	2%	\$9,346,988	2%	\$9,398,772	2%	\$9,850,934	2%	\$10,237,652	2%
DPW-Infra-Transportation			\$4,711,995	1%	\$4,267,560	1%	\$4,112,948	1%	\$4,506,679	1%	\$4,421,913	1%
<b>DPW Infra Subtotal</b>	<b>\$26,688,730</b>	<b>\$28,837,129</b>	<b>\$34,260,231</b>	<b>8%</b>	<b>\$32,486,989</b>	<b>8%</b>	<b>\$31,654,048</b>	<b>8%</b>	<b>\$32,520,681</b>	<b>8%</b>	<b>\$32,955,790</b>	<b>8%</b>
DPW-Operations-Admin			\$416,571	0%	\$362,622	0%	\$378,495	0%	\$415,629	0%	\$374,495	0%
DPW-Operations-Fleet Oper/Disp			\$6,365,265	1%	\$5,671,884	1%	\$5,131,897	1%	\$4,947,310	1%	\$4,876,393	1%
DPW-Operations-Fleet Service			\$5,305,632	1%	\$5,097,819	1%	\$4,870,847	1%	\$4,997,160	1%	\$5,398,288	1%
DPW Operations Facilities Dev			\$1,336	0%	\$3,398	0%		0%	\$5,623	0%		0%
DPW-Oper-Forestry			\$9,823,703	2%	\$8,798,047	2%	\$8,445,121	2%	\$8,703,617	2%	\$9,127,707	2%
DPW-Oper-Sanitation			\$18,207,715	4%	\$16,765,852	4%	\$16,377,540	4%	\$17,171,963	4%	\$18,258,567	4%
<b>DPW Ops Subtotal</b>	<b>\$47,326,226</b>	<b>\$45,885,736</b>	<b>\$40,120,221</b>	<b>9%</b>	<b>\$36,699,621</b>	<b>9%</b>	<b>\$35,203,900</b>	<b>9%</b>	<b>\$36,241,303</b>	<b>9%</b>	<b>\$38,035,450</b>	<b>9%</b>
DPW-Parking			\$4,933,244	1%	\$4,682,363	1%	\$4,384,103	1%	\$4,341,658	1%	\$4,429,833	1%
DPW-Sewer Maint-Environmental			\$2,688,831	1%	\$2,348,067	1%	\$2,181,183	1%	\$1,530,344	0%	\$1,550,295	0%
DPW-Sewer Maint-Underground			\$3,938,913	1%	\$3,640,592	1%	\$3,327,788	1%	\$3,470,163	1%	\$3,482,647	1%
<b>DPW Sewer Subtotal</b>			<b>\$6,627,743</b>	<b>2%</b>	<b>\$5,988,659</b>	<b>1%</b>	<b>\$5,508,972</b>	<b>1%</b>	<b>\$5,000,507</b>	<b>1%</b>	<b>\$5,032,942</b>	<b>1%</b>
DPW-Water Works-Business			\$3,565,526	1%	\$4,025,059	1%	\$4,316,081	1%	\$4,410,965	1%	\$4,406,590	1%
DPW-Water Works-Distribution			\$6,098,442	1%	\$5,482,911	1%	\$5,145,830	1%	\$4,999,969	1%	\$5,424,399	1%
DPW-Water Works-Engineering			\$1,548,189	0%	\$1,429,388	0%	\$1,441,370	0%	\$1,425,502	0%	\$1,484,999	0%
DPW-Water Works-Plants-North			\$2,976,975	1%	\$2,856,325	1%	\$2,902,118	1%	\$2,875,537	1%	\$2,818,407	1%
DPW-Water Works-Plants-South			\$2,518,198	1%	\$2,484,594	1%	\$2,417,206	1%	\$2,398,674	1%	\$2,236,824	1%
DPW-Water Works-Water Quality			\$1,091,816	0%	\$988,562	0%	\$952,720	0%	\$981,472	0%	\$1,012,002	0%
<b>DPW Water Subtotal</b>			<b>\$17,799,147</b>	<b>4%</b>	<b>\$17,266,839</b>	<b>4%</b>	<b>\$17,175,324</b>	<b>4%</b>	<b>\$17,092,119</b>	<b>4%</b>	<b>\$17,383,220</b>	<b>4%</b>
<b>DPW Total</b>	<b>\$106,182,713</b>	<b>\$108,826,426</b>	<b>\$107,184,929</b>	<b>25%</b>	<b>\$100,506,386</b>	<b>24%</b>	<b>\$97,019,750</b>	<b>23%</b>	<b>\$97,712,926</b>	<b>24%</b>	<b>\$100,327,343</b>	<b>24%</b>
Election Commission			\$644,580	0%	\$779,984	0%	\$2,204,235	1%	\$750,154	0%	\$1,383,513	0%
Employes' Retirement System			\$2,307,396	1%	\$2,309,998	1%	\$2,351,560	1%	\$2,476,555	1%	\$2,555,740	1%
Fire and Police Commission			\$742,583	0%	\$769,680	0%	\$771,172	0%	\$810,975	0%	\$845,207	0%
Fire Department				0%		0%	\$1,698,263	0%	\$2,754,608	1%	\$3,052,306	1%
Fire-Firefighting Division			\$65,528,089	15%	\$64,437,140	16%	\$64,759,656	16%	\$62,719,983	15%	\$60,845,091	15%
Fire-Supporting Services			\$5,321,812	1%	\$5,277,227	1%	\$4,004,960	1%	\$4,126,097	1%	\$4,168,227	1%
<b>Fire Subtotal</b>	<b>\$76,760,935</b>	<b>\$76,346,244</b>	<b>\$70,849,901</b>	<b>17%</b>	<b>\$69,714,367</b>	<b>17%</b>	<b>\$70,462,879</b>	<b>17%</b>	<b>\$69,600,688</b>	<b>17%</b>	<b>\$68,065,623</b>	<b>16%</b>
Health Department			\$13,333,182	3%	\$11,939,277	3%	\$11,430,547	3%	\$11,650,814	3%	\$11,265,698	3%
Health-Public Health Services											\$2,320	0%
<b>Health Subtotal</b>											<b>\$11,268,017</b>	<b>3%</b>
Library-Admin Services			\$4,448,908	1%	\$4,308,453	1%	\$4,470,250	1%	\$4,600,123	1%	\$4,720,480	1%
Library-Central Library			\$4,117,772	1%	\$4,232,628	1%	\$4,392,464	1%	\$4,364,726	1%	\$4,378,113	1%
Library-Neigh Lib & Ext Serv			\$4,340,437	1%	\$4,047,713	1%	\$3,610,469	1%	\$3,373,590	1%	\$3,398,705	1%
<b>Library Subtotal</b>			<b>\$12,907,117</b>	<b>3%</b>	<b>\$12,588,794</b>	<b>3%</b>	<b>\$12,473,182</b>	<b>3%</b>	<b>\$12,338,439</b>	<b>3%</b>	<b>\$12,497,299</b>	<b>3%</b>
Mayor's Office			\$800,892	0%	\$797,504	0%	\$738,784	0%	\$687,479	0%	\$893,229	0%
Municipal Court			\$1,954,488	0%	\$1,883,305	0%	\$1,916,499	0%	\$1,881,764	0%	\$1,894,669	0%
Police Department											\$151,098,266	37%
Police-Administration/Serv			\$36,345,482	9%	\$36,401,470	9%	\$36,656,308	9%	\$36,377,177	9%	\$3,268,223	1%
Police-Operations			\$131,655,444	31%	\$130,155,940	31%	\$131,454,596	32%	\$130,213,278	32%	\$10,301,369	2%
<b>Police Subtotal</b>	<b>\$163,132,721</b>	<b>\$172,639,878</b>	<b>\$168,000,926</b>	<b>39%</b>	<b>\$166,557,410</b>	<b>40%</b>	<b>\$168,110,904</b>	<b>41%</b>	<b>\$166,590,455</b>	<b>40%</b>	<b>\$164,667,858</b>	<b>40%</b>
Port of Milwaukee			\$1,196,058	0%	\$1,075,861	0%	\$1,162,235	0%	\$1,158,360	0%	\$1,123,275	0%
Unified Call Center				0%	\$74,406	0%	\$311,464	0%		0%		0%

WC Metrics: WC Costs and Payroll

City Total	\$427,180,569	\$440,914,552	\$426,758,763	100%	\$414,086,756	100%	\$413,821,577	100%	\$412,078,457	100%	\$413,259,909	100%
------------	---------------	---------------	---------------	------	---------------	------	---------------	------	---------------	------	---------------	------

WC Metrics: WC Costs and Payroll

	<b>% of</b>	
<b>2015</b>	<b>Total</b>	<b>3 Year Avg</b>
\$0	0%	\$839
\$0	0%	\$4,410
	0%	
\$671	0%	\$659
\$0	0%	-\$34
\$0	0%	\$562
\$84,607	1%	\$154,157
\$2,423	0%	\$2,196
\$55,730	1%	\$77,601
	0%	
\$1,699	0%	\$951
\$110,748	1%	\$144,239
\$74,179	1%	\$78,998
	0%	
\$8,622	0%	\$24,100
\$54,547	0%	\$46,148
	0%	
\$3,576	0%	\$10,656
\$1,944,357	<b>18%</b>	\$2,740,632
\$3,784,701	<b>34%</b>	\$3,961,627
\$51,194	0%	\$17,119
\$1,460,321	13%	\$1,456,003
\$3,412,772	<b>31%</b>	\$3,230,015
\$1,993	0%	\$2,606
\$46,685	0%	\$117,525
\$120,807	1%	\$220,013
\$655,058	6%	\$681,007
\$5,748,831	<b>52%</b>	\$5,723,420
<b>\$0</b>	<b>107%</b>	<b>\$12,384,648</b>
\$11,088,892		\$12,969,941
\$3,667,649	33%	30%
\$7,421,243	67%	70%

<b>2015</b>	<b>3 Year Avg</b>
2.9%	3.9%
2.3%	2.4%
2.1%	0.7%
4.4%	4.5%
9.0%	8.9%
1.1%	2.7%
2.4%	4.3%
0.7%	0.7%
5.7%	5.8%
0.0%	2.8%

WC Metrics: WC Costs and Payroll

2015		
\$2,785,458	1%	
\$190,163	0%	
\$5,041,380	1%	
\$1,433,238	0%	
\$5,185,837	1%	
\$3,669,127	1%	
\$3,797,363	1%	
\$1,967,143	0%	
<b>\$5,764,506</b>	1%	
\$130,057	0%	
\$12,841,564	3%	
\$372,755	0%	
\$1,040,941	0%	
\$1,687,507	0%	
<b>\$3,101,203</b>	1%	
\$946,518	0%	
\$1,017,119	0%	
\$970,244	0%	
\$4,066,151	1%	
\$316,658	0%	
\$278,913	0%	
<b>\$7,595,603</b>	2%	
\$2,490,108	1%	
\$649,419	0%	
\$4,426,367	1%	
\$2,861,453	1%	
\$10,358,986	3%	
\$10,237,652	2%	
\$4,421,913	1%	
<b>\$32,955,790</b>	8%	
\$374,495	0%	
\$4,876,393	1%	
\$5,398,288	1%	
\$9,127,707	2%	
\$18,258,567	4%	
<b>\$38,035,450</b>	9%	
\$4,429,833	1%	
\$1,550,295	0%	
\$3,482,647	1%	
<b>\$5,032,942</b>	1%	
\$4,406,590	1%	
\$5,424,399	1%	
\$1,484,999	0%	
\$2,818,407	1%	
\$2,236,824	1%	
\$1,012,002	0%	
<b>\$17,383,220</b>	4%	
<b>\$100,327,343</b>	24%	
\$1,383,513	0%	
\$2,555,740	1%	
\$845,207	0%	
\$3,052,306	1%	
\$60,845,091	15%	
\$4,168,227	1%	
<b>\$68,065,623</b>	16%	
\$11,265,698	3%	
\$2,320	0%	
<b>\$11,268,017</b>	3%	
\$4,720,480	1%	
\$4,378,113	1%	
\$3,398,705	1%	
<b>\$12,497,299</b>	3%	
\$893,229	0%	
\$1,894,669	0%	
\$151,098,266	37%	
\$3,268,223	1%	
\$10,301,369	2%	
<b>\$164,667,858</b>	40%	
\$1,123,275	0%	



<b>\$413,259,909</b>	<b>100%</b>
----------------------	-------------

**CLAIM COUNTS**

<b>All Claims by Dept</b>	<b>2005</b>	<b>2006</b>	<b>2007</b>	<b>2008</b>	<b>2009</b>	<b>2010</b>	<b>2011</b>	<b>2012</b>	<b>2013</b>	<b>2014</b>
ASSESSOR'S OFFICE	3	1		1					1	1
CITY ATTORNEY		1	2	2		1		2	1	
CITY TREASURER		1	1			3				1
COMMON COUNCIL - CITY CLERK	2	3	2	3	4	1	2	1	1	3
COMPTROLLER		3	1	1		1				
DEPARTMENT OF ADMINISTRATION	2	1			4		2	1	2	
DEPT OF CITY DEVELOPMENT	20	21	22	14	15	12	14	8	8	5
DEPT OF EMPLOYEE RELATIONS	2	7	7	6	1	2	2			3
DEPT OF NEIGHBORHOOD SRVCS	22	31	30	21	26	20	15	22	28	25
DPW - DEPARTMENT OF PUBLIC WORKS			1	3		5				
DPW - INFRASTRUCTURE	229	186	172	222	184	199	171	163	170	188
DPW - OPERATIONS	771	690	710	684	524	499	445	392	530	510
DPW - PARKING	33	60	28	32	40	37	39	27	15	19
DPW - SEWER MAINTENANCE	56	62	46	53	54	52	32	46	49	40
DPW - WATER DEPARTMENT	70	69	86	80	83	69	49	59	71	66
DPW-ADMINISTRATION SERVICES	4	2	1	1	2	1	4	1	4	5
ELECTION COMMISSION		1		1					1	3
EMPLOYEE'S RETIREMENT SYSTEM	4					1			2	2
FIRE AND POLICE COMMISSION							1			1
HEALTH DEPARTMENT	31	19	20	34	24	19	18	14	17	19
LIBRARY	56	42	58	34	41	24	36	24	29	26
MILWAUKEE FIRE DEPARTMENT	856	973	725	627	566	614	432	441	368	335
MILWAUKEE POLICE DEPARTMENT	877	920	891	865	775	663	636	663	680	660
MUNICIPAL COURT	2	2	1	2	1	1	3	4	2	2
PORT OF MILWAUKEE	3	2	2	2	1	1	2	1		2
<b>Grand Total</b>	<b>3,043</b>	<b>3,097</b>	<b>2,806</b>	<b>2,688</b>	<b>2,345</b>	<b>2,225</b>	<b>1,903</b>	<b>1,869</b>	<b>1,979</b>	<b>1,916</b>

<b>Med/Ind Claims by Dept</b>	<b>2005</b>	<b>2006</b>	<b>2007</b>	<b>2008</b>	<b>2009</b>	<b>2010</b>	<b>2011</b>	<b>2012</b>	<b>2013</b>	<b>2014</b>
ASSESSOR'S OFFICE	2								1	
CITY ATTORNEY		1	2	2		1		2	1	
CITY TREASURER		1	1			1				
COMMON COUNCIL - CITY CLERK	1	2	1	1	1		1	1		1
COMPTROLLER		3	1			1				
DEPARTMENT OF ADMINISTRATION	1	1			2		2		2	
DEPT OF CITY DEVELOPMENT	17	18	20	12	14	8	12	5	8	4
DEPT OF EMPLOYEE RELATIONS	1	4	6	4	1	1	2			3
DEPT OF NEIGHBORHOOD SRVCS	9	17	13	12	8	8	3	15	14	8
DPW - DEPARTMENT OF PUBLIC WORKS			1	3		2				
DPW - INFRASTRUCTURE	136	133	120	134	135	136	128	112	112	125
DPW - OPERATIONS	516	468	516	495	349	335	309	271	328	309
DPW - PARKING	14	22	16	15	12	13	13	6	9	11
DPW - SEWER MAINTENANCE	41	46	34	34	40	40	25	34	28	22
DPW - WATER DEPARTMENT	45	37	50	45	50	41	35	42	49	37
DPW-ADMINISTRATION SERVICES	3	1	1	1	1		1	1	1	2
ELECTION COMMISSION		1		1						1
EMPLOYEE'S RETIREMENT SYSTEM	1									2
FIRE AND POLICE COMMISSION							1			
HEALTH DEPARTMENT	16	13	10	16	14	13	14	8	11	15
LIBRARY	18	17	19	12	19	16	19	14	14	10
MILWAUKEE FIRE DEPARTMENT	477	448	387	380	355	395	264	295	232	206
MILWAUKEE POLICE DEPARTMENT	547	598	507	515	468	390	360	400	391	375
MUNICIPAL COURT	2	2	1	2	1		2	1	2	1
PORT OF MILWAUKEE	3	2	2	2		1	2	1		1
<b>Grand Total</b>	<b>1,850</b>	<b>1,835</b>	<b>1,708</b>	<b>1,686</b>	<b>1,470</b>	<b>1,402</b>	<b>1,193</b>	<b>1,208</b>	<b>1,203</b>	<b>1,133</b>

**3 Yr Avg**

1

2

1

2

2

7

3

25

174

477

20

45

65

3

2

2

1

17

26

381

668

3

2

**1,921**

**3 Yr Avg**

1

2

1

2

6

3

12

116

303

9

28

43

1

1

2

11

13

244

389

1

1

**1,181**

**Severity for all Claims**

Range of Loss	2008	2009	2010	2011	2012	2013	Grand Total
Under \$10,000	2,478	2,175	2,047	1,717	1,718	1,815	11,950
\$10,000 - \$50,000	150	117	121	113	105	114	720
Over \$50,000	60	53	57	73	46	51	340
Grand Total	2,688	2,345	2,225	1,903	1,869	1,980	13,010

Range of Loss	2008	2009	2010	2011	2012	2013	Grand Total
Under \$10,000	0.92	0.93	0.92	0.90	0.92	0.92	11,950
\$10,000 - \$50,000	0.06	0.05	0.05	0.06	0.06	0.06	720
Over \$50,000	0.02	0.02	0.03	0.04	0.02	0.03	340
Grand Total	2,688	2,345	2,225	1,903	1,869	1,980	13,010

**Lost Time Claims**

Range of Loss	2008	2009	2010	2011	2012	2013	Grand Total
Under \$10,000		545	493	401	407	375	4,699
\$10,000 - \$50,000		107	110	101	91	95	654
Over \$50,000		49	55	68	44	48	324
Grand Total		701	658	570	542	518	5,677

Range of Loss	2008	2009	2010	2011	2012	2013	Grand Total
Under \$10,000		0.78	0.75	0.70	0.75	0.72	4,699
\$10,000 - \$50,000		0.15	0.17	0.18	0.17	0.18	654
Over \$50,000		0.07	0.08	0.12	0.08	0.09	324
Grand Total		701	658	570	542	518	5,677

**Serious Claims**

Range of Loss	2008	2009	2010	2011	2012	2013	Grand Total
Under \$10,000	1,476	1,301	1,225	1,008	1,057	1,039	7,106
\$10,000 - \$50,000	150	117	121	112	105	114	719
Over \$50,000	60	52	56	73	46	51	338
Grand Total	1,686	1,470	1,402	1,193	1,208	1,204	8,163

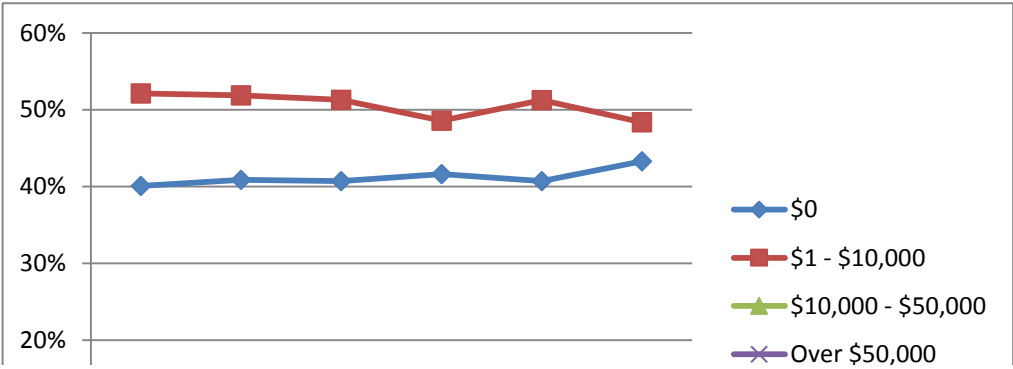
Range of Loss	2008	2009	2010	2011	2012	2013	Grand Total
Under \$10,000	0.88	0.89	0.87	0.84	0.88	0.86	7,106
\$10,000 - \$50,000	0.09	0.08	0.09	0.09	0.09	0.09	719
Over \$50,000	0.04	0.04	0.04	0.06	0.04	0.04	338
Grand Total	1,686	1,470	1,402	1,193	1,208	1,204	8,163

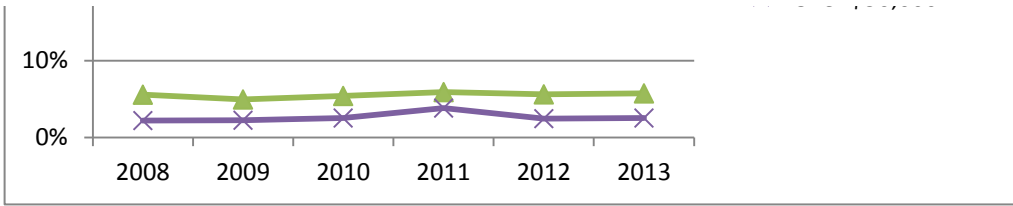
**All Ranges with Zero Separated**

Range of Loss	2008	2009	2010	2011	2012	2013	Grand Total
\$0	1,077	958	905	791	760	857	5,348
\$1 - \$10,000	1,401	1,216	1,140	923	957	958	6,595
\$10,000 - \$50,000	150	117	121	113	105	114	720
Over \$50,000	60	53	57	73	46	51	340



\_\_\_\_\_





**City & MPS Data**

<b>MPS Claims</b>	<b>2009</b>	<b>2010</b>	<b>2011</b>	<b>2012</b>	<b>2013</b>	<b>2014</b>	<b>3 year Avg</b>
Indemnity	285	322	351	299	265	264	276
Medical	512	567	522	461	486	399	449
% of Total MPS	58.8%	58.5%	61.7%	60.5%	60.9%	59.7%	60.3%
No Doctor	558	630	541	496	483	448	476
% of Total MPS	41.2%	41.5%	38.3%	39.5%	39.1%	40.3%	39.7%
<b>Total MPS Ind/Med</b>	<b>797</b>	<b>889</b>	<b>873</b>	<b>760</b>	<b>751</b>	<b>663</b>	<b>725</b>
<b>Total MPS Claims</b>	<b>1,355</b>	<b>1,519</b>	<b>1,414</b>	<b>1,256</b>	<b>1,234</b>	<b>1,111</b>	<b>1,200</b>

<b>City Claims</b>	<b>2009</b>	<b>2010</b>	<b>2011</b>	<b>2012</b>	<b>2013</b>	<b>2014</b>
Indemnity	689	649	559	513	494	461
Medical	781	753	634	695	709	672
No Doctor	875	823	710	661	776	783
<b>Total City Ind/Med</b>	<b>1,470</b>	<b>1,402</b>	<b>1,193</b>	<b>1,208</b>	<b>1,203</b>	<b>1,133</b>
<b>Total City Claims</b>	<b>2,345</b>	<b>2,225</b>	<b>1,903</b>	<b>1,869</b>	<b>1,979</b>	<b>1,916</b>

<b>City &amp; MPS</b>	<b>2009</b>	<b>2010</b>	<b>2011</b>	<b>2012</b>	<b>2013</b>	<b>2014</b>
Indemnity	974	971	910	812	759	725
Medical	1293	1320	1156	1156	1195	1071
No Doctor	1433	1453	1251	1157	1259	1231
<b>Total Ind/Med</b>	<b>2,267</b>	<b>2,291</b>	<b>2,066</b>	<b>1,968</b>	<b>1,954</b>	<b>1,796</b>
<b>Total Claims</b>	<b>3,700</b>	<b>3,744</b>	<b>3,317</b>	<b>3,125</b>	<b>3,213</b>	<b>3,027</b>

<b>MPS Serious as % of Total City/MPS</b>	<b>2009</b>	<b>2010</b>	<b>2011</b>	<b>2012</b>	<b>2013</b>	<b>2014</b>
	35.16%	38.80%	42.26%	38.62%	38.43%	36.92%



WC Metrics: FTE, Claim Type Claim Incidence

<b>Claim Type by Dept</b>											
<b>MFD</b>	<b>2005</b>	<b>2006</b>	<b>2007</b>	<b>2008</b>	<b>2009</b>	<b>2010</b>	<b>2011</b>	<b>2012</b>	<b>2013</b>	<b>2014</b>	<b>2015</b>
Indemnity	274	285	245	242	226	243	161	179	128	105	108
Medical	203	163	142	138	129	152	103	116	104	101	119
No Doctor	379	525	338	247	211	219	168	146	136	129	177
<b>Total Ind/Med</b>	<b>477</b>	<b>448</b>	<b>387</b>	<b>380</b>	<b>355</b>	<b>395</b>	<b>264</b>	<b>295</b>	<b>232</b>	<b>206</b>	<b>227</b>
<b>Total Claims</b>	<b>856</b>	<b>973</b>	<b>725</b>	<b>627</b>	<b>566</b>	<b>614</b>	<b>432</b>	<b>441</b>	<b>368</b>	<b>335</b>	<b>404</b>

WC Metrics: Report Lag Time

<b>Claims (Ind/Med Only)</b>	<b>2009</b>	<b>2010</b>	<b>2011</b>	<b>2012</b>	<b>2013</b>	<b>2014</b>
All City	1,470	1,402	1,193	1,208	1,203	1,207
MFD	355	395	264	295	232	227
MPD	468	390	360	400	391	383
DPW Infra	135	136	128	112	112	106
DPW Ops	349	335	309	271	328	322
DPW Total	587	567	511	466	527	523


**Claims with Notify Time**

**> 5 Weekdays (Goal of**

**5% or Less)**

	<b>2009</b>	<b>2010</b>	<b>2011</b>	<b>2012</b>	<b>2013</b>	<b>2014</b>
<b>All City</b>						
Notify Dept	67	53	40	40	46	Can't do bc too many t
% of Claims	4.6%	3.8%	3.4%	3.3%	3.8%	0.0%
Notify DER/WC	457	414	371	329	247	296
% of Claims	31.1%	29.5%	31.1%	27.2%	20.5%	24.5%
<b>MFD</b>						
Notify Dept	13	10	10	16	13	
% of Claims	3.7%	2.5%	3.8%	5.4%	5.6%	0.0%
Notify DER/WC	129	124	99	51	25	30
% of Claims	36.3%	31.4%	37.5%	17.3%	10.8%	13.2%
<b>MPD</b>						
Notify Dept	27	15	10	11	9	
% of Claims	5.8%	3.8%	2.8%	2.8%	2.3%	0.0%
Notify DER/WC	139	106	126	172	119	179
% of Claims	29.7%	27.2%	35.0%	43.0%	30.4%	46.7%
<b>DPW Infrac</b>						
Notify Dept	7	10	3	1	5	
% of Claims	5.2%	7.4%	2.3%	0.9%	4.5%	0.0%
Notify DER/WC	52	52	34	25	25	24
% of Claims	38.5%	38.2%	26.6%	22.3%	22.3%	22.6%
<b>DPW Ops</b>						
Notify Dept	10	9	9	5	9	
% of Claims	2.9%	2.7%	2.9%	1.8%	2.7%	0.0%
Notify DER/WC	68	79	60	51	44	39
% of Claims	19.5%	23.6%	19.4%	18.8%	13.4%	12.1%
<b>DPW Total</b>						
Notify Dept	22	25	15	9	20	
% of Claims	3.7%	4.4%	2.9%	1.9%	3.8%	0.0%
Notify DER/WC	163	159	124	96	89	80
% of Claims	27.8%	28.0%	24.3%	20.6%	16.9%	15.3%

## WC Metrics: Report Lag Time

  
Blank fields in iVos











WC Metrics: Claim Status

Claim Status	<i>Based on that year's Reporting History Period</i>									
Open Claim Inventory	2007	2008	2009	2010	2011	2012	2013	2014	2015	3 Yr Avg
City Claims	824	975	823	889	758	642	665	874	918	819
MPS Claims				566	455	389	408	512	498	473
<b>Grand Total</b>	<b>824</b>	<b>975</b>	<b>823</b>	<b>1,455</b>	<b>1,213</b>	<b>1,031</b>	<b>1,073</b>	<b>1,386</b>	<b>1,416</b>	<b>1,292</b>

Claim Count	2010	2011	2012	2013	2014
Indemnity	672	582	538	509	474
Medical	779	646	688	721	667
<b>Grand Total</b>	<b>1451</b>	<b>1228</b>	<b>1226</b>	<b>1230</b>	<b>1141</b>

Claim Duration

Days Med/Ind Claims

Open	Incident Year				
	2010	2011	2012	2013	2014
2010	39,785				
2011	70,684	32,158			
2012	38,886	64,158	30,541		
2013	12,454	24,566	41,991	31,873	
2014	20,261	23,237	27,148	53,171	39,177
2015	8,869	14,715	8,059	22,513	39,003
<b>Grand Total</b>	<b>190,939</b>	<b>158,834</b>	<b>107,739</b>	<b>107,557</b>	<b>78,180</b>

Average Claim Duration (Number of Days all claims are open divided by total number of compensable WC claims)

	2010	2011	2012	2013	2014
2010	27.42				
2011	76.13	26.19			
2012	102.93	78.43	24.91		
2013	111.52	98.44	59.16	25.91	
2014	125.48	117.36	81.31	69.14	34.34
2015	131.59	129.34	87.88	87.44	68.52

Days Indemnity Claims

Open	Incident Year				
	2010	2011	2012	2013	2014
2010	20,145				
2011	34,510	14,954			
2012	29,632	41,065	16,756		
2013	8,747	20,301	30,118	16,287	
2014	16,105	20,062	23,600	36,469	15,508
2015	8,869	12,887	7,313	18,049	25,121

WC Metrics: Claim Status

Year Claims are Closed

All Claims Closed Year (below)	Incident Year					Total
	2010	2011	2012	2013	2014	
2010	1,376					1,376
2011	721	1,386				2,107
2012	91	394	1,429			1,914
2013	21	60	342	1,493		1,916
2014	20	33	61	372	1,475	1,961
2015	7	16	13	53	319	1,048
<b>Grand Total</b>	<b>2,236</b>	<b>1,889</b>	<b>1,845</b>	<b>1,918</b>	<b>1,794</b>	<b>10,322</b>

Med/Ind Claims Closed Year (below)	Incident Year					Total
	2010	2011	2012	2013	2014	
2010	838					838
2011	466	730				1,196
2012	85	356	807			1,248
2013	19	56	308	790		1,173
2014	20	32	60	313	736	1,161
2015	7	16	13	53	281	370
<b>Grand Total</b>	<b>1,435</b>	<b>1,190</b>	<b>1,188</b>	<b>1,156</b>	<b>1,017</b>	<b>5,986</b>

Claims Open for that Year *Numbers before 2010 will be better because of lag time between year end and data pull*

Data Pulled	1.5.09	1.5.09	1.5.09	3.16.09	3.10.10	2.24.11	3.7.12	3.7.13	3.5.14	3.3.15
<b>All City</b>	<b>2005</b>	<b>2006</b>	<b>2007</b>	<b>2008</b>	<b>2009</b>	<b>2010</b>	<b>2011</b>	<b>2012</b>	<b>2013</b>	<b>2014</b>
Closed	3,014	3,052	2,739	2,569	2,125	1,748	1,553	1,619	1,688	1,625
Open	21	30	45	86	153	423	286	194	225	239
Re-Open	8	15	22	33	67	54	64	56	67	52
Open + Re-Open Subtotal	29	45	67	119	220	477	350	250	292	291
<b>Grand Total</b>	<b>3,043</b>	<b>3,097</b>	<b>2,806</b>	<b>2,688</b>	<b>2,345</b>	<b>2,225</b>	<b>1,903</b>	<b>1,869</b>	<b>1,980</b>	<b>1,916</b>
Percentage of Open										
Claims	0.69%	0.97%	1.60%	3.20%	6.52%	19.01%	15.03%	10.38%	11.36%	12.47%
Percentage of Open + Re-Open Claims	0.95%	1.45%	2.39%	4.43%	9.38%	21.44%	18.39%	13.38%	14.75%	15.19%



**3 Yr Avg**

1,644

219

58

278

**1,922**

**City Laborer Data**

<b>All Claims</b>	<b>2009</b>	<b>2010</b>	<b>2011</b>	<b>2012</b>	<b>2013</b>	<b>2014</b>	<b>3 Yr Avg</b>
CITY LABORER (REG)	57	40	41	43	41	58	47
CITY LABORER (SEASON) SEWERS	16	5	5	11	10	26	16
<b>Grand Total</b>	<b>73</b>	<b>45</b>	<b>46</b>	<b>54</b>	<b>51</b>	<b>84</b>	<b>63</b>

<b>Serious Claims</b>	<b>2009</b>	<b>2010</b>	<b>2011</b>	<b>2012</b>	<b>2013</b>	<b>2014</b>	<b>3 Yr Avg</b>
CITY LABORER (REG)	41	29	34	36	29	39	35
CITY LABORER (SEASON) SEWERS	12	5	4	5	3	20	9
<b>Grand Total</b>	<b>53</b>	<b>34</b>	<b>38</b>	<b>41</b>	<b>32</b>	<b>59</b>	<b>44</b>

<b>City Laborer Claims by Type</b>	<b>2009</b>	<b>2010</b>	<b>2011</b>	<b>2012</b>	<b>2013</b>	<b>2014</b>	<b>3 Yr Avg</b>
Indemnity	31	15	19	24	11	29	21
Medical	22	19	19	17	21	30	23
No Doctor	20	11	8	13	19	25	19
<b>Grand Total</b>	<b>73</b>	<b>45</b>	<b>46</b>	<b>54</b>	<b>51</b>	<b>84</b>	<b>63</b>

<b>City Laborer Claims by Division</b>	<b>2009</b>	<b>2010</b>	<b>2011</b>	<b>2012</b>	<b>2013</b>	<b>2014</b>	<b>3 Yr Avg</b>
Department of Public Works		2					0
DPW - INFRASTRUCTURE			2	4	2		3
DPW - OPERATIONS		1			1	2	2
DPW - SEWER - UNDERGROUND	11	1	1	2	2	2	2
DPW - SEWERS						3	3
DPW-INFRASTRUCTURE-ELECTRICAL	24	6	8	7	4	15	9
DPW-INFRASTRUCTURE-ST/BRIDGES	32	33	28	26	23	41	30
DPW-INFRASTRUCTURE-SUPPORT			1		1		1
DPW-OPS-FORESTRY	6	1	4	6	8	8	7
DPW-OPS-SANITATION		1	2	9	10	13	11
<b>Grand Total</b>	<b>73</b>	<b>45</b>	<b>46</b>	<b>54</b>	<b>51</b>	<b>84</b>	<b>63</b>

<b>Severity of Claims by Cost</b>	<b>2009</b>	<b>2010</b>	<b>2011</b>	<b>2012</b>	<b>2013</b>	<b>2014</b>	<b>3 Yr Avg</b>
CITY LABORER (REG)	\$294,973	\$197,565	\$373,344	\$157,696	\$92,320	\$382,176	\$210,731
CITY LABORER (SEASON) SEWERS	\$28,278	\$2,647	\$11,505	\$3,248	\$4,269	\$27,467	\$11,662
<b>Grand Total</b>	<b>\$323,251</b>	<b>\$200,212</b>	<b>\$384,849</b>	<b>\$160,944</b>	<b>\$96,589</b>	<b>\$409,643</b>	<b>\$222,392</b>

<b>Injury by Activity, All Claims</b>	<b>2009</b>	<b>2010</b>	<b>2011</b>	<b>2012</b>	<b>2013</b>	<b>2014</b>	<b>3 Yr Avg</b>
Any Injury involving Struck by an Object	3		4	5	7	9	7
Any Injury involving Garbage Cart Snow / Ice					2	10	6
Slip, Trip, Fall Same Level	12	2	1	5		4	5
Any Injury involving Lifting	7	2	6	6	3	4	4
Any Injury involving Shoveling				1	6	5	4
Any Injury involving Concrete		1	4	2	6	4	4
Any Injury involving Asphalt	3	5	4	4	1	5	3
Any Injury involving Push / Pull	3	1		3	2	4	3
Fatigue, Cumulative Work		1		5	1	3	3
Slip, Trip, Fall Entering / Exiting Vehicle	2	1	2	2	1	5	3
Any Injury involving Hand Tools	3	4	1	4	2	2	3
Any Injury involving Insect Bite	3	4		2	1	4	2
Slip, Trip, Fall Different Level / Curb / Pot Hole / Stair	6	4	3	2	2	3	2
Any Injury involving Garbage Cart Push / Pull				1	3	3	2
Any Injury involving Chemicals / Sewers / Smoke / Debris				2	4	1	2
Any Injury involving Vehicle Operating / Driving	2	2	4	1	1	4	2
Any Injury involving Air Hammer	1	1	1			2	2
Any Injury involving Misc. Tool						2	2
Any Injury involving Operating equipment					2	2	2
Any Injury involving Vehicle Accident Occupant		2		2			2



**City Laborer Data**

Slip, Trip, Fall Snow and Ice	2	1	1	3	2
Any Injury involving Digging		2		1	2
Any Injury involving Cable	1	1	2		2

**City Laborer Data**

<b>Injury by Activity, Serious Claims</b>	<b>2009</b>	<b>2010</b>	<b>2011</b>	<b>2012</b>	<b>2013</b>	<b>2014</b>	<b>3 Yr Avg</b>
Any Injury involving Struck by an Object	2		3	5	4	6	5
Any Injury involving Garbage Cart Snow / Ice						5	5
Any Injury involving Asphalt	2	1	4	3		5	4
Slip, Trip, Fall Same Level	6	1	1	4		3	4
Any Injury involving Shoveling				1	4	5	3
Any Injury involving Lifting	5	1	5	4	2	4	3
Any Injury involving Insect Bite	2	3		2		4	3
Fatigue, Cumulative Work		1		5	1	3	3
Any Injury involving Concrete		1	3	2	5	2	3
Any Injury involving Hand Tools	3	4	1	3	2		3
Any Injury involving Push / Pull	3	1		2	1	4	2
Any Injury involving Garbage Cart Push / Pull				1	3	3	2
Any Injury involving Air Hammer	1	1				2	2
Any Injury involving Vehicle Operating / Driving	2	2	4	1	1	3	2
Any Injury involving Chemicals / Sewers / Smoke / Debris				2	2	1	2
Slip, Trip, Fall Different Level / Curb / Pot Hole / Stair	5	3	2		1	2	2
Any Injury involving Operating equipment					1	2	2
Any Injury involving Cable				1	2		2

<b>Severity of Injury by Activity</b>	<b>2009</b>	<b>2010</b>	<b>2011</b>	<b>2012</b>	<b>2013</b>	<b>2014</b>	<b>3 Yr Avg</b>
Any Injury involving Vehicle Accident Occupant		\$9,038		\$53,165			\$53,165
Slip, Trip, Fall Ladder						\$52,100	\$52,100
Any Injury involving Garbage Cart Snow / Ice					\$0	\$88,774	\$44,387
Any Injury involving Concrete		\$228	\$6,222	\$10,482	\$48,355	\$37,585	\$32,140
Any Injury involving Garbage Cart Push / Pull				\$31	\$4,072	\$53,228	\$19,111
Any Injury involving Vehicle Entering / Exiting	\$15,339		\$2,391	\$16,580			\$16,580
Any Injury involving Push / Pull	\$3,964	\$47,896		\$4,804	\$18,094	\$25,828	\$16,242
Any Injury involving Shoveling				\$0	\$4,133	\$37,327	\$13,820
Slip, Trip, Fall Same Level	\$5,399	\$1,201	\$805	\$20,065		\$3,783	\$11,924
Any Injury involving Operating equipment					\$1,269	\$19,944	\$10,607
Fatigue, Cumulative Work		\$8		\$15,140	\$0	\$14,484	\$9,875
Any Injury involving Asphalt	\$15,033	\$991	\$4,634	\$8,352	\$0	\$20,365	\$9,572
Slip, Trip, Fall Different Level / Curb / Pot Hole / Stair	\$78,544	\$21,774	\$2,519	\$0	\$3,000	\$17,019	\$6,673
Any Injury involving Cable	\$0			\$10,924	\$1,491		\$6,208
Any Injury involving Lifting	\$9,159	\$15,999	\$191,065	\$5,613	\$2,907	\$8,665	\$5,728
Any Injury involving Struck by an Object	\$1,838		\$1,009	\$3,442	\$3,335	\$9,808	\$5,529
Miscellaneous	\$11,138	\$7,513		\$3,935			\$3,935
Any Injury involving Vehicle Operating / Driving	\$6,810	\$21,497	\$97,887	\$2,136	\$0	\$8,170	\$3,435
Any Injury involving Hand Tools	\$18,823	\$28,277	\$1,910	\$3,803	\$2,835		\$3,319
Any Injury involving Air Hammer	\$171	\$2,696	\$0			\$3,296	\$3,296
Slip, Trip, Fall Entering / Exiting Vehicle	\$25,302	\$0	\$4,870	\$0	\$6,333	\$281	\$2,205
Any Injury involving Misc. Tool						\$1,378	\$1,378
Any Injury involving Insect Bite	\$1,041	\$961		\$731	\$0	\$3,203	\$1,312
Slip, Trip, Fall Snow and Ice	\$33,577			\$168	\$0	\$3,722	\$1,297
Any Injury involving Digging				\$1,220			\$1,220
Any Injury involving Chemicals / Sewers / Smoke / Debris				\$353	\$497	\$500	\$450
Any Injury involving Garbage Cart	\$85,068	\$31,120	\$935				\$0
Any Injury involving Digging / Shoveling	\$8,489	\$10,125	\$69,217				\$0

**City Laborer Data**

<b>Years on Job When Injured, All Claims</b>	<b>2009</b>	<b>2010</b>	<b>2011</b>	<b>2012</b>	<b>2013</b>	<b>2014</b>	<b>3 Yr Avg</b>
0	1	5	3	7	9	24	13
1	16		2	5	6	6	6
2	14	10	5	6	1	5	4
3		12	13	3	6	4	4
4	5	1	6	15	2	10	9
5	14	4	1	6	11	3	7
6		3	3	1	5	15	7
7	2		4	2	2	6	3
8	4			6	1		4
9			2		3	2	3
10		1	2			5	5
11	1		1	1			1
12	2		1			1	1
13	5	3					
14		1			1		1
15				1			1
16	1						
17	3	2					
18		1	1				
19			1		1		1
21						1	1
28		1					
30	1						
31		1					
33	2						
34	1			1			1
35			1		3		3
36	1					2	2

<b>Years on Job When Injured, Serious Claims</b>	<b>2009</b>	<b>2010</b>	<b>2011</b>	<b>2012</b>	<b>2013</b>	<b>2014</b>	<b>3 Yr Avg</b>
0	1	5	2	3	5	19	9
1	12		1	3	2	3	3
2	10	10	5	6	1	2	3
3		6	11	2	5	3	3
4	5	1	6	12	1	5	6
5	6	3	1	4	5	2	4
6		3	2	1	3	11	5
7	2		3	1	2	4	2
8	4			6	1		4
9			2		2	1	2
10			2			5	5
11				1			1
12	2		1			1	1
13	3	3					
14					1		1
15				1			1
17	3	1					
18			1				
19			1		1		1
21						1	1
28		1					
30	1						
31		1					

**City Laborer Data**

33	2						
34	1		1				1
35					3		3
36	1					2	2

**Years on Job & Injuries by Age Range**

	2009	2010	2011	2012	2013	2014	Grand Total
<b>0</b>							
20-29	1		1		1	5	8
30-39				2	2	5	9
40-49		4		3	4	8	19
50-59		1	2	2	2	5	12
60-69						1	1
<b>0 Total</b>	<b>1</b>	<b>5</b>	<b>3</b>	<b>7</b>	<b>9</b>	<b>24</b>	<b>49</b>

<b>1</b>							
20-29	2				1		3
30-39	6		1			1	8
40-49	7			1	3	3	14
50-59	1		1	4	2	2	10
<b>1 Total</b>	<b>16</b>		<b>2</b>	<b>5</b>	<b>6</b>	<b>6</b>	<b>35</b>

<b>2 Year</b>							
20-29	1		3				4
30-39	5	5		1		3	14
40-49	2	4		1	1	1	9
50-59	6	1	2	2		1	12
60-69				2			2
<b>2 Total</b>	<b>14</b>	<b>10</b>	<b>5</b>	<b>6</b>	<b>1</b>	<b>5</b>	<b>41</b>

<b>3</b>							
20-29				1			1
30-39		5	6	1	3		15
40-49		2	5		1	4	12
50-59		5	2	1	1		9
60-69					1		1
<b>3 Total</b>		<b>12</b>	<b>13</b>	<b>3</b>	<b>6</b>	<b>4</b>	<b>38</b>

<b>4</b>							
20-29			1				1
30-39	1	1	1	3	1		7
40-49	1		1	4	1	4	11
50-59	3		3	8		2	16
60-69						4	4
<b>4 Total</b>	<b>5</b>	<b>1</b>	<b>6</b>	<b>15</b>	<b>2</b>	<b>10</b>	<b>39</b>

Age Range When Injured All Claims	2009	2010	2011	2012	2013	2014	3 Yr Avg
20-29	4		5	2	2	5	3
30-39	13	11	9	10	10	13	11
40-49	20	16	14	13	21	37	24
50-59	25	15	16	25	11	21	19
60-69	11	3	2	4	7	8	6
<b>Grand Total</b>	<b>73</b>	<b>45</b>	<b>46</b>	<b>54</b>	<b>51</b>	<b>84</b>	<b>63</b>

Age Range When Injured, Serious Claims	2009	2010	2011	2012	2013	2014	3 Yr Avg
20-29	3		5	1	2	3	2
30-39	10	8	8	6	6	9	7
40-49	15	12	14	12	11	25	16
50-59	15	12	10	18	7	15	13
60-69	10	2	1	4	6	7	6

**City Laborer Data**

<b>Grand Total</b>	<b>53</b>	<b>34</b>	<b>38</b>	<b>41</b>	<b>32</b>	<b>59</b>	<b>44</b>
--------------------	-----------	-----------	-----------	-----------	-----------	-----------	-----------

<b>Number of Positions/Roster Query</b>	<b>2013</b>	<b>2014</b>	<b>Grand Total</b>
CITY LABORER (REG)	80	74	154
CITY LABORER (SEASON)	72	87	159
<b>Grand Total</b>	<b>152</b>	<b>161</b>	<b>313</b>

<b>Number per Age Range of City Laborer Workforce (Roster Query)</b>	<b>2013</b>	<b>2014</b>	<b>3 Yr Avg</b>
20-29	14	13	14
30-39	36	44	40
40-49	50	58	54
50-59	40	32	36
60-69	12	14	13
<b>Grand Total</b>	<b>152</b>	<b>161</b>	<b>157</b>

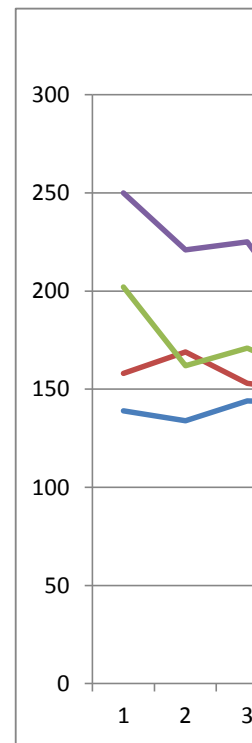
<b>Percent Injured by Age Range (All Claims)</b>	<b>2013</b>	<b>2014</b>	<b>3 Yr Avg</b>
20-29	14%	38%	26%
30-39	28%	30%	29%
40-49	42%	64%	53%
50-59	28%	66%	47%
60-69	58%	57%	58%
<b>Grand Total</b>	<b>152</b>	<b>161</b>	<b>157</b>

<b>Percent Injured by Age Range (Serious Claims)</b>	<b>2013</b>	<b>2014</b>	<b>3 Yr Avg</b>
20-29	14%	23%	19%
30-39	17%	20%	19%
40-49	22%	43%	33%
50-59	18%	47%	32%
60-69	50%	50%	50%
<b>Grand Total</b>	<b>152</b>	<b>161</b>	<b>313</b>

2014	Indemnity	Medical	No Doctor	Grand Total
1	46	74	93	213
2	47	49	89	185
3	47	62	67	176
4	37	38	49	124
5	40	30	55	125
6	28	64	70	162
7	33	67	74	174
8	41	71	56	168
9	36	52	62	150
10	37	68	63	168
11	30	53	48	131
12	39	44	57	140
<b>Grand Total:</b>	<b>461</b>	<b>672</b>	<b>783</b>	<b>1,916</b>
Qrt 1	140	185	249	574
Qrt 2	105	132	174	411
<b>6 Mos</b>	<b>245</b>	<b>317</b>	<b>423</b>	<b>985</b>
Qtr 3	110	190	192	492
Qtr 4	106	165	168	439
<b>Total</b>	<b>461</b>	<b>672</b>	<b>783</b>	<b>1916</b>

2013	Indemnity	Medical	No Doctor	Grand Total
1	48	64	73	185
2	68	77	74	219
3	61	56	84	201
4	37	44	51	132
5	40	61	78	179
6	33	48	55	136
7	27	58	71	156
8	37	76	67	180
9	32	62	50	144
10	35	62	59	156
11	37	48	50	135
12	39	53	64	156
<b>Grand Total:</b>	<b>494</b>	<b>709</b>	<b>776</b>	<b>1,979</b>
Qrt 1	177	197	231	605
Qrt 2	110	153	184	447
<b>6 Mos</b>	<b>287</b>	<b>350</b>	<b>415</b>	<b>1052</b>
Qtr 3	96	196	188	480
Qtr 4	111	163	173	447
<b>Total</b>	<b>494</b>	<b>709</b>	<b>776</b>	<b>1979</b>

2012	Indemnity	Medical	No Doctor	Grand Total
1	36	44	59	139
2	41	47	46	134
3	34	49	61	144
4	41	50	52	143
5	58	62	52	172
6	49	53	65	167
7	39	72	54	165
8	46	70	49	165
9	30	69	59	158
10	51	58	67	176
11	42	66	50	158



12	46	55	47	148
<b>Grand Total</b>	<b>513</b>	<b>695</b>	<b>661</b>	<b>1869</b>
Qrt 1	111	140	166	417
Qrt 2	148	165	169	482
<b>6 Mos</b>	<b>259</b>	<b>305</b>	<b>335</b>	<b>899</b>
Qtr 3	115	211	162	488
Qtr 4	139	179	164	482
<b>Total</b>	<b>513</b>	<b>695</b>	<b>661</b>	<b>1869</b>

2011	Indemnity	Medical	No Doctor	Grand Total
1	46	48	64	158
2	60	50	59	169
3	41	48	64	153
4	53	43	53	149
5	47	52	73	172
6	60	60	72	192
7	46	71	55	172
8	45	64	74	183
9	54	39	40	133
10	31	71	60	162
11	34	43	51	128
12	42	45	45	132
<b>Grand Total</b>	<b>559</b>	<b>634</b>	<b>710</b>	<b>1903</b>
Qrt 1	147	146	187	480
Qrt 2	160	155	198	513
<b>6 Mos</b>	<b>307</b>	<b>301</b>	<b>385</b>	<b>993</b>
Qtr 3	145	174	169	488
Qtr 4	107	159	156	422
<b>Total</b>	<b>559</b>	<b>634</b>	<b>710</b>	<b>1903</b>

2010	Indemnity	Medical	No Doctor	Grand Total
1	66	62	74	202
2	60	39	63	162
3	53	65	53	171
4	47	48	62	157
5	61	56	57	174
6	66	74	77	217
7	69	84	83	236
8	46	101	86	233
9	42	71	43	156
10	48	63	80	191
11	34	52	55	141
12	57	37	91	185
<b>Grand Total</b>	<b>649</b>	<b>752</b>	<b>823</b>	<b>2225</b>
Qrt 1	179	166	190	535
Qrt 2	174	178	196	548
<b>6 Mos</b>	<b>353</b>	<b>344</b>	<b>386</b>	<b>1083</b>
Qtr 3	157	256	212	625
Qtr 4	139	152	226	517
<b>Total</b>	<b>649</b>	<b>752</b>	<b>824</b>	<b>2225</b>



2009	Indemnity	Medical	No Doctor	Grand Total
1	62	85	103	250
2	61	74	86	221
3	64	72	89	225
4	74	53	55	182
5	60	67	74	201
6	53	71	65	189
7	62	58	61	181
8	46	75	69	190
9	43	57	58	158
10	50	81	90	221
11	39	49	50	138
12	75	39	75	189
<b>Grand Total</b>	<b>689</b>	<b>781</b>	<b>875</b>	<b>2345</b>
Qrt 1	187	231	278	696
Qrt 2	187	191	194	572
<b>6 Mos</b>	<b>374</b>	<b>422</b>	<b>472</b>	<b>1268</b>
Qtr 3	151	190	188	529
Qtr 4	164	169	215	548
<b>Total</b>	<b>689</b>	<b>781</b>	<b>875</b>	<b>2345</b>

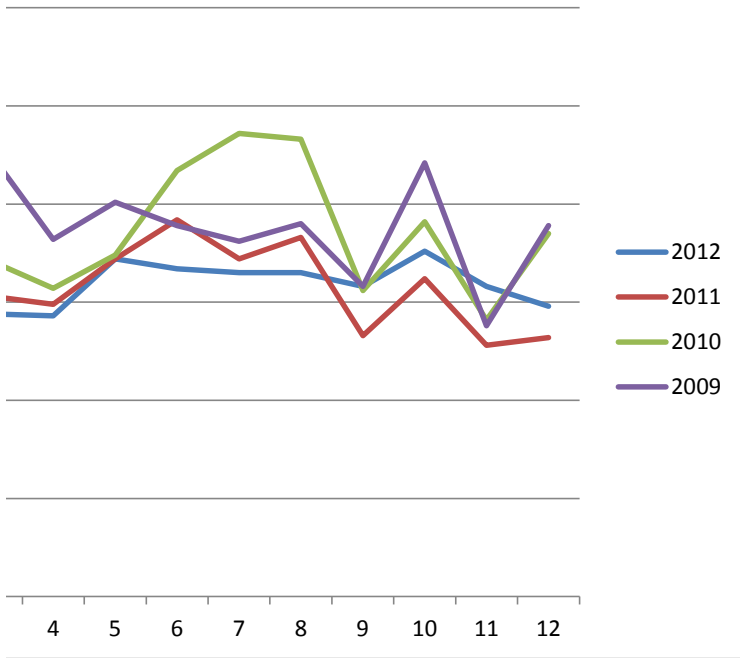
2008	Indemnity	Medical	No Doctor	Grand Total
1	75	61	98	234
2	87	79	113	279
3	76	70	95	241
4	49	59	82	190
5	53	60	70	183
6	75	92	83	250
7	84	81	82	247
8	80	80	71	231
9	67	67	80	214
10	78	72	79	229
11	61	54	73	188
12	60	67	76	203
<b>Grand Total</b>	<b>845</b>	<b>842</b>	<b>1002</b>	<b>2689</b>
Qrt 1	238	210	306	754
Qrt 2	177	211	235	623
<b>6 Mos</b>	<b>415</b>	<b>421</b>	<b>541</b>	<b>1377</b>
Qtr 3	231	228	233	692
Qtr 4	199	193	228	620
<b>Total</b>	<b>845</b>	<b>842</b>	<b>1002</b>	<b>2689</b>

2007	Indemnity	Medical	No Doctor	Grand Total
1	81	81	90	252
2	92	65	114	271
3	85	58	100	243
4	49	48	71	168
5	76	62	82	220
6	76	67	84	227
7	94	70	96	260
8	62	75	102	239
9	76	64	79	219
10	56	76	82	214
11	65	73	83	221
12	69	85	113	267
<b>Grand Total</b>	<b>881</b>	<b>824</b>	<b>1096</b>	<b>2801</b>
Qrt 1	258	204	304	766
Qrt 2	201	177	237	615
<b>6 Mos</b>	<b>459</b>	<b>381</b>	<b>541</b>	<b>1381</b>
Qtr 3	232	209	277	718
Qtr 4	190	234	278	702
<b>Total</b>	<b>881</b>	<b>824</b>	<b>1096</b>	<b>2801</b>

2006	Indemnity	Medical	No Doctor	Grand Total
1	76	55	82	213
2	67	68	98	233
3	76	73	109	258
4	78	53	82	213
5	63	68	96	227
6	74	78	91	243
7	83	86	85	254
8	95	87	120	302
9	82	90	105	277
10	78	88	96	262
11	72	87	71	230
12	70	88	227	385
<b>Grand Total</b>	<b>914</b>	<b>921</b>	<b>1262</b>	<b>3097</b>
Qrt 1	219	196	289	704
Qrt 2	215	199	269	683
<b>6 Mos</b>	<b>434</b>	<b>395</b>	<b>558</b>	<b>1387</b>
Qtr 3	260	263	310	833
Qtr 4	220	263	394	877
<b>Total</b>	<b>914</b>	<b>921</b>	<b>1262</b>	<b>3097</b>

2005	Indemnity	Medical	No Doctor	Grand Total
1	86	77	111	274
2	71	80	93	244
3	89	87	119	295
4	80	62	93	235
5	65	81	117	263
6	62	77	110	249
7	81	99	76	256
8	115	88	99	302
9	65	75	86	226
10	73	71	115	259
11	72	58	78	208
12	60	76	96	232
<b>Grand Total</b>	<b>919</b>	<b>931</b>	<b>1193</b>	<b>3043</b>
Qrt 1	246	244	323	813
Qrt 2	207	220	320	747
<b>6 Mos</b>	<b>453</b>	<b>464</b>	<b>643</b>	<b>1560</b>
Qtr 3	261	262	261	784
Qtr 4	205	205	289	699
<b>Total</b>	<b>919</b>	<b>931</b>	<b>1193</b>	<b>3043</b>

Claims Per Month



Claims Per Month

All City		2005	2006	2007	2008	2009	2010	2011	2012	2013	2014
	1	274	213	252	234	250	202	158	139	185	213
	2	244	233	271	279	221	162	169	134	219	185
	3	295	258	243	241	225	171	153	144	201	176
	4	235	213	169	190	182	157	149	143	132	124
	5	263	227	220	183	201	174	172	172	179	125
	6	249	243	228	250	189	217	192	167	136	162
	7	256	254	260	247	181	236	172	165	156	174
	8	302	302	240	231	190	233	183	165	180	168
	9	226	277	220	214	158	156	133	158	144	150
	10	259	262	214	229	221	191	162	176	156	168
	11	208	230	221	188	138	141	128	158	135	131
	12	232	385	268	203	189	185	132	148	156	140
<b>Grand Total</b>		3043	3097	2806	2689	2345	2225	1903	1869	1979	1916

Summary Claims & FTEs		2005	2006	2007	2008	2009	2010	2011	2012	2013	2014
1st Quarter		813	704	766	754	696	535	480	417	605	574
2nd Quarter		747	683	617	623	572	548	513	482	447	411
First Half Year		1560	1387	1383	1377	1268	1083	993	899	1052	985
%Change			-11.1%	-0.3%	-0.4%	-7.9%	-14.6%	-8.3%	-17.0%	5.9%	9.6%
3rd Quarter		784	833	720	692	529	625	488	488	480	492
4th Quarter		699	877	703	620	548	517	422	482	447	439
Second Half Year		1483	1710	1423	1312	1077	1142	910	970	927	931
%Change			15.3%	-16.8%	-7.8%	-17.9%	6.0%	-20.3%	-15.1%	1.9%	-4.0%
Total Claims		3043	3097	2806	2689	2345	2225	1903	1869	1979	1916
% Change			1.8%	-9.4%	-4.2%	-12.8%	-5.1%	-14.5%	-16.0%	4.0%	2.5%
Total FTEs		0	7,641	7,773	7,742	7,597	7,284	7,311	7,280	7,189	7,278
% Change				1.7%	-0.4%	-1.9%	-4.1%	0.4%	-0.1%	-1.7%	0.0%

MFD		2005	2006	2007	2008	2009	2010	2011	2012	2013	2014
	1	73	64	69	56	50	60	42	36	34	51
	2	53	62	72	51	49	42	44	25	42	20
	3	97	81	65	54	66	44	27	25	28	36
	4	96	66	52	37	56	46	43	43	22	20
	5	90	58	50	46	57	56	45	37	51	24
	6	74	71	62	69	46	68	54	44	24	28
	7	62	72	70	54	53	52	45	39	29	31
	8	63	66	63	48	28	69	40	47	28	24
	9	55	70	51	55	38	31	20	37	22	22
	10	68	81	71	52	43	52	25	45	35	21
	11	61	80	45	51	32	43	22	32	23	20
	12	64	202	55	54	48	51	25	31	30	38
<b>Grand Total</b>		856	973	725	627	566	614	432	441	368	335

Summary Claims & FTEs		2005	2006	2007	2008	2009	2010	2011	2012	2013	2014
1st Quarter		223	207	206	161	165	146	113	86	104	107
2nd Quarter		260	195	164	152	159	170	142	124	97	72
First Half Year		483	402	370	313	324	316	255	210	201	179
%Change			-16.8%	-8.0%	-15.4%	3.5%	-2.5%	-19.3%	-33.5%	-21.2%	-14.8%
3rd Quarter		180	208	184	157	119	152	105	123	79	77

**Claims Per Month**

<b>4th Quarter</b>	193	363	171	157	123	146	72	108	88	79
<b>Second Half Year</b>	373	571	355	314	242	298	177	231	167	156
<b>%Change</b>		53.1%	-37.8%	-11.5%	-22.9%	23.1%	-40.6%	-22.5%	-5.6%	-32.5%
<b>Total Claims</b>	856	973	725	627	566	614	432	441	368	335
<b>% Change</b>		13.7%	-25.5%	-13.5%	-9.7%	8.5%	-29.6%	-28.2%	-14.8%	-24.0%

<b>MPD</b>	<b>2005</b>	<b>2006</b>	<b>2007</b>	<b>2008</b>	<b>2009</b>	<b>2010</b>	<b>2011</b>	<b>2012</b>	<b>2013</b>	<b>2014</b>
1	74	57	85	72	94	59	44	51	59	64
2	77	63	86	87	66	41	47	56	56	62
3	80	74	58	70	71	52	44	54	64	62
4	64	62	57	57	57	47	52	48	55	42
5	88	79	80	62	66	54	68	61	58	43
6	70	83	65	85	52	71	59	58	54	67
7	75	73	85	96	49	72	62	53	63	64
8	80	97	64	67	64	64	53	61	71	59
9	70	97	72	62	46	49	45	58	52	45
10	70	82	66	84	108	60	65	64	49	62
11	58	65	92	65	48	41	49	56	48	46
12	71	88	81	58	54	53	48	43	51	44
<b>Grand Total</b>	<b>877</b>	<b>920</b>	<b>891</b>	<b>865</b>	<b>775</b>	<b>663</b>	<b>636</b>	<b>663</b>	<b>680</b>	<b>660</b>

Claims Per Month

DEPT OF PUBLIC WORKS	2005	2006	2007	2008	2009	2010	2011	2012	2013	2014
1						1				
6				2						
7						1				
8						1				
9				1		1				
11										
12			1			1				
DPW - INFRASTRUCTURE	2005	2006	2007	2008	2009	2010	2011	2012	2013	2014
1	14	9	12	17	15	11	6	10	12	18
2	10	6	8	17	20	7	10	6	18	19
3	15	8	13	20	11	15	13	16	11	11
4	10	9	15	14	14	20	9	14	14	13
5	19	16	12	14	22	16	17	24	14	13
6	21	13	19	11	24	16	16	10	6	18
7	27	21	15	17	15	16	15	15	15	13
8	25	25	18	22	11	21	19	16	15	16
9	26	28	20	22	10	21	17	11	15	19
10	26	24	11	30	19	23	18	12	17	22
11	23	17	15	20	14	18	20	16	17	15
12	13	10	14	18	9	15	11	13	16	11
DPW - OPERATIONS	2005	2006	2007	2008	2009	2010	2011	2012	2013	2014
1	88	58	62	64	58	49	43	28	58	56
2	69	75	73	87	55	44	47	26	76	54
3	74	63	74	75	51	43	46	33	70	50
4	46	46	26	58	30	27	27	29	29	35
5	47	46	56	41	31	29	28	35	28	32
6	62	54	64	61	37	47	35	34	32	30
7	70	65	65	57	40	68	42	46	39	49
8	97	77	65	70	59	57	49	24	48	53
9	54	58	52	54	42	31	29	32	37	44
10	63	40	45	40	32	32	40	38	37	46
11	37	49	49	27	31	26	21	29	34	29
12	64	59	78	50	58	48	38	39	42	32
DPW - SEWER MAINTENAN	2005	2006	2007	2008	2009	2010	2011	2012	2013	2014
1	5	6	4	3	5	6	5	5	3	3
2	9	4	3	2	2	3	2	1	3	3
3	3	6	4	2	3	4	1	4	7	
4	1	7	2	7	7	6	3	4	4	4
5	5	9	5	3	6	1		2	12	2
6	2	2	2	5	8	2	9	3	3	4
7	5	3	4	4	3	6	1	3	2	7
8	8	5	6	11	6	3	3	2	2	2
9	9	2	4	4	4	8	4	2	3	6
10	4	7	6	4	4	6		4	4	5
11	4	3	6	4	4	2	3	9	3	4
12	1	8		4	2	5	1	7	3	

Claims Per Month

DPW - WATER DEPARTMENT	2005	2006	2007	2008	2009	2010	2011	2012	2013	2014
1	5	6	4	7	14	4	3	3	10	7
2	11	6	11	11	14	14	5	9	8	10
3	10	7	7	8	8	3	6	6	9	4
4	5	4	8	7	10	6	6	1	3	4
5	4	5	7	6	4	6	5	5	6	7
6	4	5	5	8	4	6	7	1	9	6
7	5	6	6	6	4	7	1	5	3	4
8	7	9	10	5	8	2	1	6	2	6
9	2	5	7	4	4	8	5	6	8	6
10	9	7	3	3	4	3	2	5	7	2
11	4	5	4	10	4	5	4	6	3	5
12	4	4	14	5	5	5	4	6	3	5
DPW - ADMINISTRATION	2005	2006	2007	2008	2009	2010	2011	2012	2013	2014
1					1					1
2										1
3										1
4							2	1		1
5							1		1	
6		1			1		2	1	1	
7		1								
8				1						
9						1	1		1	
10	2					1				1
11	2									
12			1						1	
DPW - PARKING	2005	2006	2007	2008	2009	2010	2011	2012	2013	2014
1	2	2	4	2	4	3	5	3	1	4
2	1	5	5	2	3	3	2	6	2	3
3	3	7	4	3	1	2	4	2	4	
4		7		2	2	2	3	1	1	1
5	1	3	1	3	3	4	5	2		
6	1	5	1	2	3	2	1	4		
7	1	4	1	2	6	4	2	1	1	2
8	7	12	2	2	5	6	3	1	3	
9	3	4	3	3	3	1	6	4	1	2
10	6	8		2	3	4	4		1	
11	3	2	1	4	3		1	1		5
12	5	1	6	5	4	3	1		1	2
DPW All	2005	2006	2007	2008	2009	2010	2011	2012	2013	2014
1	114	81	86	93	97	74	62	49	84	89
2	100	96	100	119	94	71	66	48	107	90
3	105	91	102	108	74	67	70	61	101	66
4	62	73	51	88	63	61	50	50	51	58
5	76	79	81	67	66	56	56	68	61	54
6	90	80	91	89	77	73	70	53	51	58
7	108	100	91	86	68	102	61	70	60	75
8	144	128	101	111	89	90	75	49	70	77
9	94	97	86	88	63	71	62	55	65	77
10	110	86	65	79	62	69	64	59	66	76
11	73	76	75	65	56	51	49	61	57	58
12	87	82	114	82	78	77	55	65	66	50
Grand Total	1163	1069	1043	1075	887	862	740	688	839	828

**Claims Per Month**

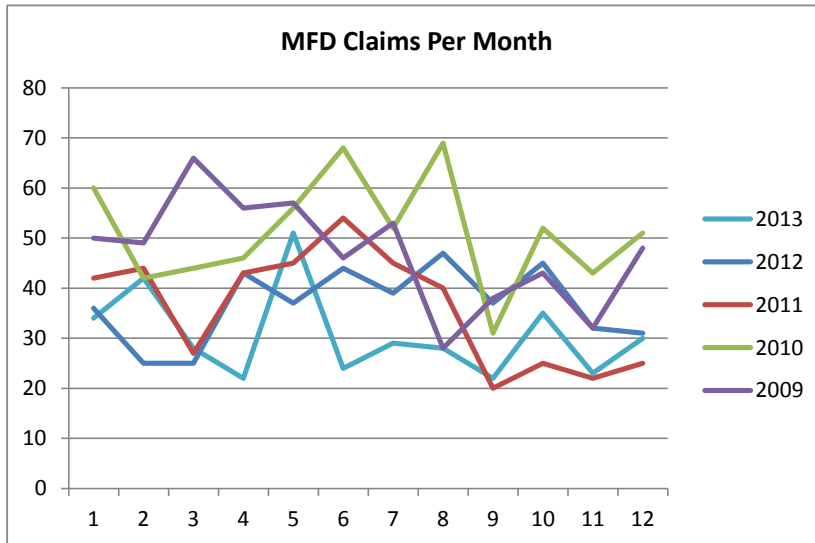
1163    1069    1043    1075    887    862    740    688    839    828



3 Year Avg
179
179
174
133
159
155
165
171
151
167
141
148
1921

3 Year Avg
501
481
981
-6.5%
485
450
936
-11.2%
1917
-8.8%
7260
-0.5%

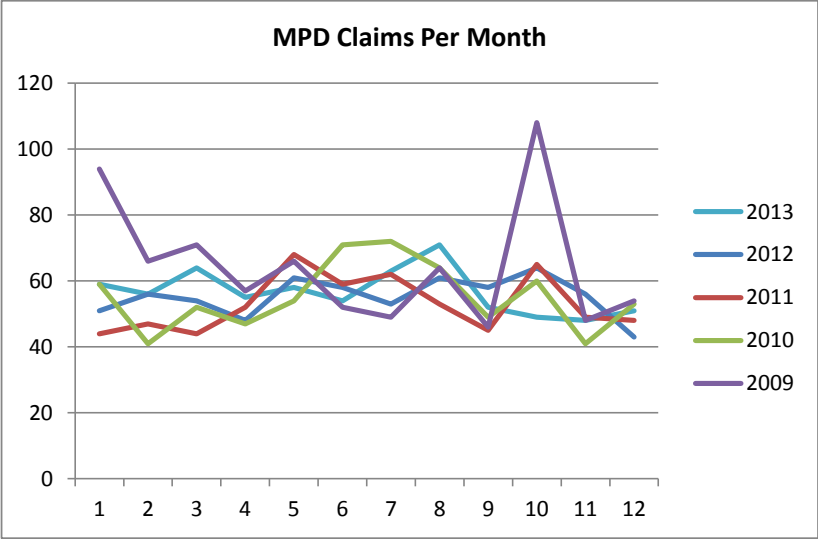
3 Year Avg
40
29
30
28
37
32
33
33
27
34
25
33
381



3 Year Avg
101
121
222
-24.7%
102

89
192
-22.9%
414
-24.2%

<b>3 Year Avg</b>
58
58
60
48
54
60
60
64
52
58
50
46
668



3 Year Avg

3 Year Avg

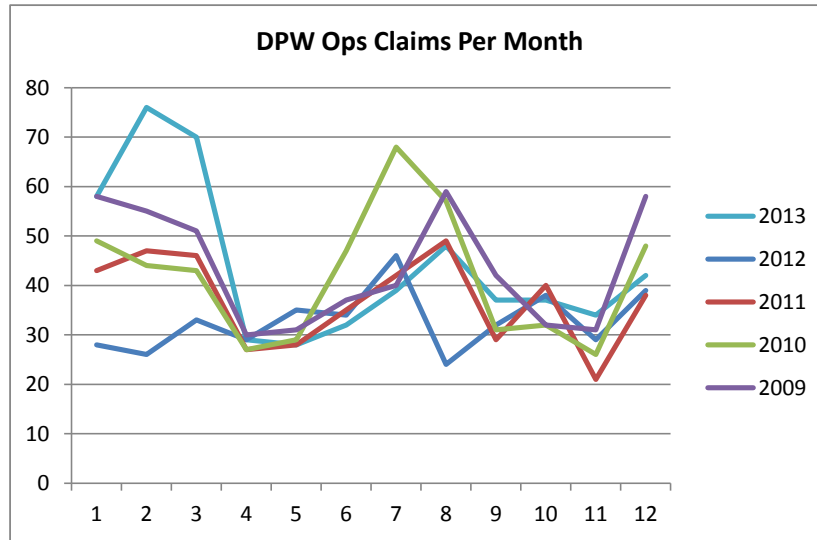
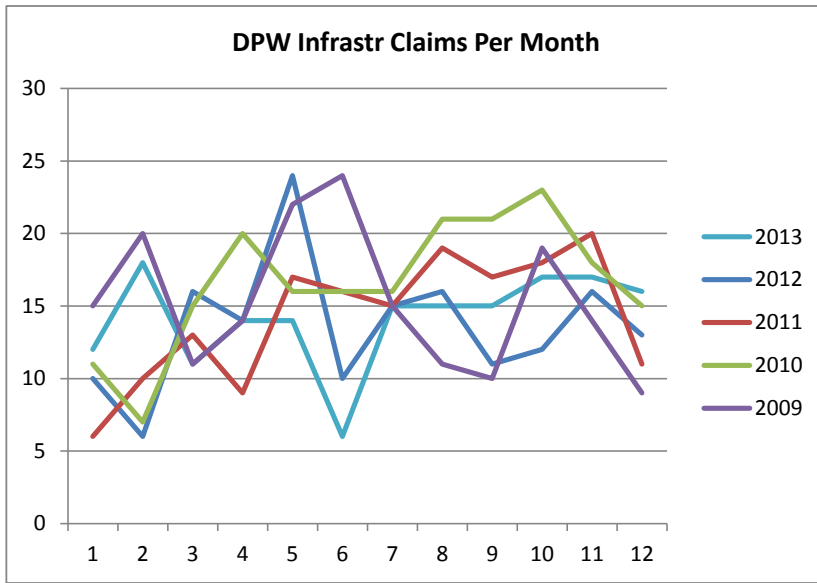
9  
11  
13  
12  
18  
11  
15  
17  
14  
16  
18  
13

3 Year Avg

43  
50  
50  
28  
30  
34  
42  
40  
33  
38  
28  
40

3 Year Avg

4  
2  
4  
4  
7  
5  
2  
2  
3  
4  
5  
4



3 Year Avg
5
7
7
3
5
6
3
3
6
5
4
4
3 Year Avg
2
1
1
#DIV/0!
1
1
3 Year Avg
3
3
3
2
4
3
1
2
4
3
1
1
3 Year Avg
65
74
77
50
62
58
64
65
61
63
56
62
756



**FTE History (Total O&M and Non-O&M from Adopted Budgets)**

	<b>2008 ADOPTED TOTAL</b>	<b>2009 ADOPTED TOTAL</b>	<b>2010 ADOPTED TOTAL</b>	<b>2011 ADOPTED TOTAL</b>	<b>2012 ADOPTED TOTAL</b>	<b>2013 ADOPTED TOTAL</b>	<b>2014 ADOPTED TOTAL</b>	<b>2015 ADOPTED TOTAL</b>
Administration, Department of	100.04	100.44	98.84	103.40	107.85	132.84	135.84	139.84
Assessor's Office	46.55	46.55	42.55	42.55	42.55	40.55	45.00	46.00
Attorney, City	60.40	61.80	58.80	59.05	58.05	59.00	60.60	60.60
City Development	230.00	160.25	143.60	148.00	130.00	110.00	103.00	104.00
Common Council City Clerk	93.00	90.50	92.30	91.80	95.40	92.90	92.63	95.00
Comptroller	59.50	59.50	60.50	60.50	59.50	58.50	58.50	58.00
Court, Municipal	40.50	40.50	40.38	40.38	36.38	35.40	36.40	36.40
Election Commission*	12.00	8.00	8.00	7.00	7.00	7.00	7.00	7.00
Employee Relations, Department of	60.98	56.50	53.01	53.60	53.60	55.50	55.38	55.34
Fire & Police Commission	8.50	9.50	10.50	13.40	13.40	14.40	13.40	13.40
Fire Department	1,133.47	1,097.16	1,033.55	1,032.55	1,013.80	1,014.99	1,006.79	1,007.29
Health	274.98	272.11	258.45	257.80	258.31	242.67	240.75	240.24
Library	347.94	327.96	313.26	322.55	320.80	306.88	309.52	309.46
Mayor's Office	12.50	12.50	11.50	11.50	11.50	10.50	12.00	13.00
Neighborhood Services, Department of	207.58	203.08	197.00	213.50	221.50	243.50	246.50	255.50
Police Department	2,898.72	2,890.10	2,752.51	2,763.29	2,755.51	2,727.01	2,747.96	2,755.09
Port of Milwaukee	22.00	22.00	21.00	20.00	21.00	21.00	20.00	20.00
Public Works, Department of (Total)	(1,449.29)	(1,458.78)	(-1,380.89)	(-1,358.79)	-1,374.87	-1,355.10	-1,407.06	-1,388.38
DPW-Administrative Services	58.31	58.00	60.75	61.00	56.71	43.65	46.18	46.70
DPW-Infrastructure Services	511.71	527.26	596.54	598.59	597.41	597.20	628.54	619.54
DPW-Operations	879.27	873.52	723.60	699.20	720.75	714.25	732.34	722.14
Special Purpose Accounts	3.00	3.00	4.00	4.00	3.00	4.00	4.00	4.00
Treasurer, City	30.11	30.25	28.25	31.40	29.37	27.44	27.45	29.98
Unified Call Center			8.25	1.00	18.00	0.00	0.00	0.00
<b>TOTAL</b>	<b>7,091.06</b>	<b>6,950.48</b>	<b>6,617.14</b>	<b>6,636.06</b>	<b>6,631.39</b>	<b>6,559.18</b>	<b>6,629.78</b>	<b>6,638.52</b>
<b>PENSIONS</b>								
Employes' Retirement System	42.00	41.50	41.50	41.50	41.50	42.50	43.50	43.50
Deferred Compensation	2.00	2.00	2.00	2.00	2.00	2.00	2.00	2.00
Policemen's Annuity/Benefit Fund Admin	0.00	0.00	0.00	0.00	0.00	0.00	0.00	0.00
<b>TOTAL</b>	<b>44.00</b>	<b>43.50</b>	<b>43.50</b>	<b>43.50</b>	<b>43.50</b>	<b>44.50</b>	<b>45.50</b>	<b>45.50</b>
Parking	126.75	126.75	122.50	128.75	119.75	117.75	117.75	118.75
Sewer Maintenance Fund	139.29	134.14	133.01	133.01	133.00	115.00	115.00	115.00
Water Works	341.22	341.82	368.08	370.16	352.16	352.67	355.67	360.42
<b>GRAND TOTAL</b>	<b>7,742.32</b>	<b>7,596.69</b>	<b>7,284.23</b>	<b>7,311.48</b>	<b>7,279.80</b>	<b>7,189.10</b>	<b>7,263.70</b>	<b>7,278.19</b>
	<b>-0.4%</b>	<b>-1.9%</b>	<b>-4.1%</b>	<b>0.4%</b>	<b>-0.4%</b>	<b>-1.2%</b>	<b>1.0%</b>	<b>0.2%</b>
<b>DPW Total</b>	<b>2,056.55</b>	<b>2,061.49</b>	<b>2,004.48</b>	<b>1,990.71</b>	<b>1,979.78</b>	<b>1,940.52</b>	<b>1,995.48</b>	<b>1,982.55</b>

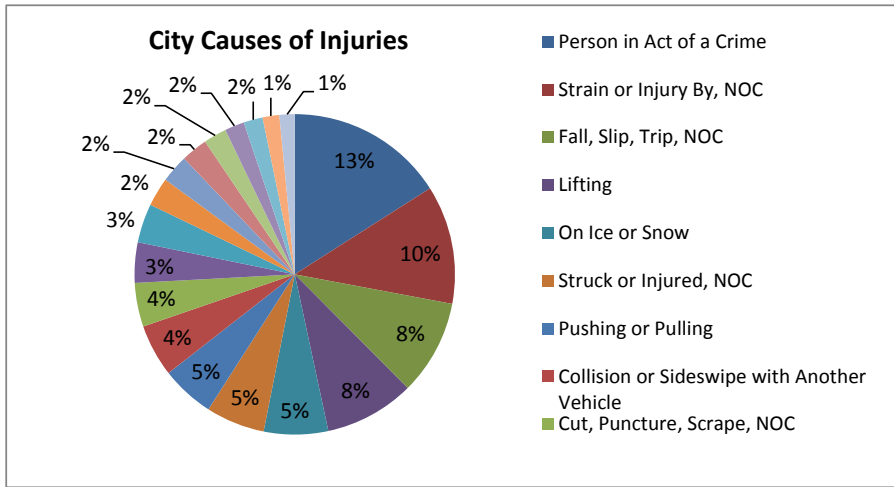
\*Election Commission does not include Temporary Election Workers (12.16 FTEs in 2006, 2.86 in 2007, 11.11 in 2008, 3.8 in 2009, 13.56 in 2010, 2.8 in 2011, 16.11 in 2012, 1.81 in 2013, 31.64 in 2014, 10.86 in 2015) due to staffing fluctuations between election and non-election years.

**MFD Numbers from NFPA Report**

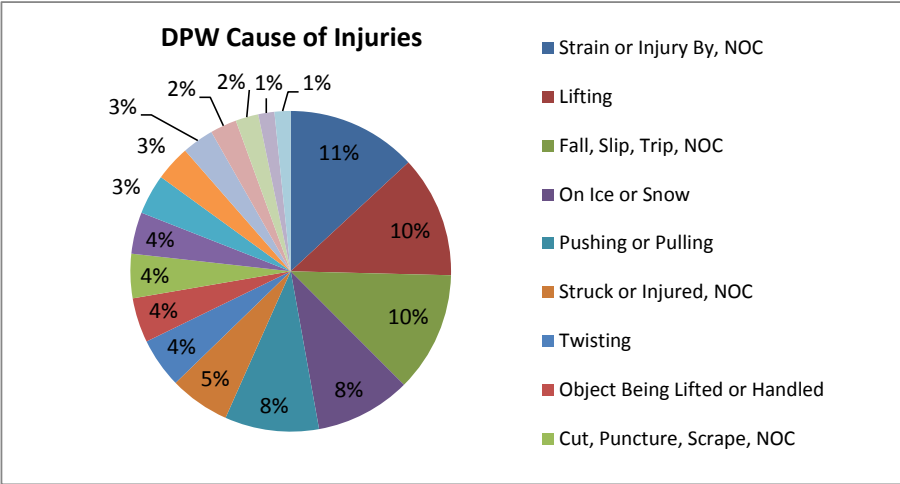
	<b>2004</b>	<b>2005</b>	<b>2006</b>	<b>2007</b>	<b>2008</b>	<b>2009</b>	<b>2010</b>
Structure Fires	633	589	674	759	658	568	857
<b>Injuries</b>							
Fire Scene Injuries	284	303	409	272	224	190	193
At non-fire emergencies	165	217	210	192	128	139	105
Responding to Incident	21	30	43	9	19	13	62
Training	79	63	64	75	25	43	20
Other on Duty	185	213	229	139	181	149	81
<b>Total Injuries</b>	<b>734</b>	<b>826</b>	<b>955</b>	<b>687</b>	<b>577</b>	<b>534</b>	<b>461</b>

<b>All City Claim Cause (OSHA)</b>	<b>2011</b>	<b>2012</b>	<b>2013</b>	<b>Grand Total</b>	
Person in Act of a Crime	248	260	261	769	13%
Strain or Injury By, NOC	152	205	219	576	10%
Fall, Slip, Trip, NOC	139	138	185	462	8%
Lifting	147	160	130	437	8%
On Ice or Snow	88	56	168	312	5%
Struck or Injured, NOC	79	101	106	286	5%
Pushing or Pulling	109	77	73	259	5%
Collision or Sideswipe with Another Ve	78	86	90	254	4%
Cut, Puncture, Scrape, NOC	81	71	61	213	4%
Other Than Physical Cause of Injury	80	65	51	196	3%
Twisting	67	57	65	189	3%
Object Being Lifted or Handled	62	43	35	140	2%
Animal or Insect	33	54	48	135	2%
Caught In, Under or Between, NOC	38	46	45	129	2%
Stationary Object	35	45	32	112	2%
Contact with, NOC	27	42	26	95	2%
Foreign Matter (Body) in Eye(s)	23	37	33	93	2%
Striking Against or Stepping On, NOC	33	27	21	81	1%
On Stairs	30	20	24	74	1%
Repetitive Motion	28	20	19	67	1%
Slipped, Did Not Fall	17	14	33	64	1%
Fire or Flame	26	23	15	64	1%
Dust, Gases, Fumes, or Vapors	13	17	27	57	1%
Falling or Flying Object	23	17	16	56	1%
Motor Vehicle, NOC	26	17	10	53	1%
Holding or Carrying	22	16	11	49	1%
Object Handled	10	14	23	47	1%
Chemicals	23	7	13	43	1%
Using Tool or Machinery	15	8	12	35	1%
Broken Glass	12	12	9	33	1%
Cumulative, NOC	4	12	16	32	1%
Temperature Extremes	11	9	9	29	1%
From Different Level (Elevation)	10	10	8	28	0%
Other-Miscellaneous, NOC	7	9	9	25	0%
Reaching	8	9	5	22	0%
Collision with a Fixed Object	10	4	8	22	0%
Motor Vehicle	19	2	1	22	0%
From Ladder or Scaffolding	6	4	10	20	0%
From Liquid or Grease Spills	4	9	7	20	0%
Hot Objects or Substances	6	8	6	20	0%
Hand Tool, Utensil; Not Powered	5	5	6	16	0%
Jumping	6	4	4	14	0%
Hand Tool or Machine in Use	4	4	2	10	0%
Welding or Throwing	3	3	3	9	0%
Continual Noise	4	2	2	8	0%
Vehicle Upset	4	2	2	8	0%
Powered Hand Tool, Appliance	4	2	2	8	0%
Into Openings	2	2	3	7	0%
Absorption, Ingestion or Inhalation, NC	2	1	4	7	0%
Stepping on Sharp Object	4	1	1	6	0%
Machine or Machinery	1	4	1	6	0%
Collapsing Materials (Slides of Earth)	2	2	2	6	0%
Rubbed or Abraded, NOC	1	2	2	5	0%
Object Handled by Others	1	1	3	5	0%
Electrical Current	2	1	1	4	0%
Moving Parts of Machine	3			3	0%
Fellow Worker	1		1	2	0%
Abnormal Air Pressure	2			2	0%
Explosion or Flare Back		1	1	2	0%
Cold Objects or Substances	1			1	0%
Crash of Water Vehicle	1			1	0%
Steam or Hot Fluids		1		1	0%
On Same Level	1			1	0%
<b>Grand Total</b>	<b>1903</b>	<b>1869</b>	<b>1980</b>	<b>5752</b>	<b>100%</b>

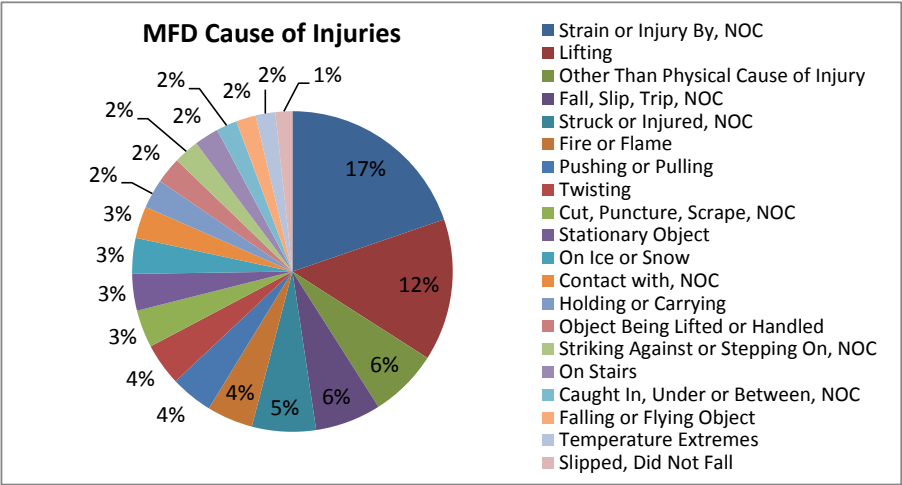




<b>DPW Claim Cause (OSHA)</b>	<b>2011</b>	<b>2012</b>	<b>2013</b>	<b>Grand Total</b>	
Strain or Injury By, NOC	63	79	108	250	11%
Lifting	77	84	73	234	10%
Fall, Slip, Trip, NOC	71	63	97	231	10%
On Ice or Snow	52	32	100	184	8%
Pushing or Pulling	73	53	55	181	8%
Struck or Injured, NOC	28	43	45	116	5%
Twisting	30	26	40	96	4%
Object Being Lifted or Handled	41	23	22	86	4%
Cut, Puncture, Scrape, NOC	34	26	25	85	4%
Collision or Sideswipe with Another Ve	27	30	23	80	4%
Animal or Insect	19	27	31	77	3%
Caught In, Under or Between, NOC	19	26	23	68	3%
Foreign Matter (Body) in Eye(s)	15	26	20	61	3%
Stationary Object	16	21	14	51	2%
Repetitive Motion	16	12	16	44	2%
Striking Against or Stepping On, NOC	12	11	8	31	1%
Object Handled	8	9	14	31	1%
Slipped, Did Not Fall	6	7	15	28	1%
Dust, Gases, Fumes, or Vapors	4	5	18	27	1%
Using Tool or Machinery	13	5	8	26	1%
Falling or Flying Object	11	7	6	24	1%
Motor Vehicle, NOC	10	8	3	21	1%
Chemicals	12	2	7	21	1%
Reaching	5	7	4	16	1%
Other Than Physical Cause of Injury	8	5	1	14	1%
Broken Glass	6	3	5	14	1%
Holding or Carrying	7	4	1	12	1%
Contact with, NOC	2	7	3	12	1%
On Stairs	1	3	7	11	0%
Motor Vehicle	10	1		11	0%
From Different Level (Elevation)	4	3	3	10	0%
From Ladder or Scaffolding	4		5	9	0%
Hot Objects or Substances	3	3	3	9	0%
Cumulative, NOC	1	2	5	8	0%
Hand Tool, Utensil; Not Powered	2	2	4	8	0%
Hand Tool or Machine in Use	4	3	1	8	0%
Welding or Throwing	1	3	3	7	0%
Powered Hand Tool, Appliance	3	1	2	6	0%
Other-Miscellaneous, NOC	2	4		6	0%
Collapsing Materials (Slides of Earth)	1	2	2	5	0%
Collision with a Fixed Object	1	1	3	5	0%
Temperature Extremes	2	3		5	0%
Machine or Machinery	1	3	1	5	0%
Vehicle Upset	1	2	1	4	0%
From Liquid or Grease Spills	1		3	4	0%
Absorption, Ingestion or Inhalation, NC	1		2	3	0%
Stepping on Sharp Object	3			3	0%
Into Openings	2		1	3	0%
Moving Parts of Machine	2			2	0%
Rubbed or Abraded, NOC	1		1	2	0%
Object Handled by Others	1		1	2	0%
Jumping		1	1	2	0%
Cold Objects or Substances	1			1	0%
Explosion or Flare Back			1	1	0%
Electrical Current	1			1	0%
Fire or Flame	1			1	0%
<b>Grand Total</b>	<b>740</b>	<b>688</b>	<b>835</b>	<b>2263</b>	

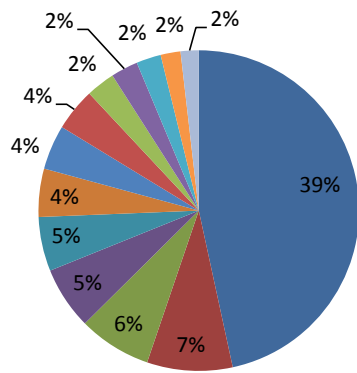


<b>MFD Claim Cause (OSHA)</b>	<b>2011</b>	<b>2012</b>	<b>2013</b>	<b>Grand Total</b>	
Strain or Injury By, NOC	62	81	65	208	17%
Lifting	51	57	43	151	12%
Other Than Physical Cause of Injury	33	21	19	73	6%
Fall, Slip, Trip, NOC	18	20	32	70	6%
Struck or Injured, NOC	19	25	24	68	5%
Fire or Flame	22	21	6	49	4%
Pushing or Pulling	21	15	9	45	4%
Twisting	21	11	13	45	4%
Cut, Puncture, Scrape, NOC	13	16	11	40	3%
Stationary Object	12	18	9	39	3%
On Ice or Snow	12	10	16	38	3%
Contact with, NOC	10	15	9	34	3%
Holding or Carrying	11	11	9	31	2%
Object Being Lifted or Handled	12	11	5	28	2%
Striking Against or Stepping On, NOC	13	9	5	27	2%
On Stairs	13	5	8	26	2%
Caught In, Under or Between, NOC	8	7	7	22	2%
Falling or Flying Object	7	7	7	21	2%
Temperature Extremes	8	6	7	21	2%
Slipped, Did Not Fall	3	2	13	18	1%
Foreign Matter (Body) in Eye(s)	5	6	4	15	1%
Collision or Sideswipe with Another Vehicle		6	8	14	1%
Chemicals	9	1	1	11	1%
Hot Objects or Substances	3	5	3	11	1%
Repetitive Motion	6	5		11	1%
From Ladder or Scaffolding	1	4	5	10	1%
From Different Level (Elevation)	3	5	2	10	1%
Object Handled	2	3	4	9	1%
Animal or Insect	3	3	3	9	1%
Other-Miscellaneous, NOC	2	3	4	9	1%
Broken Glass	2	5	1	8	1%
Dust, Gases, Fumes, or Vapors	3	2	2	7	1%
Using Tool or Machinery	2	2	3	7	1%
Hand Tool, Utensil; Not Powered	2	3	1	6	0%
From Liquid or Grease Spills	2	4		6	0%
Jumping	4		2	6	0%
Cumulative, NOC		3	1	4	0%
Motor Vehicle, NOC	2	1	1	4	0%
Motor Vehicle	3			3	0%
Absorption, Ingestion or Inhalation, NC	1		2	3	0%
Reaching	1	2		3	0%
Into Openings		1	1	2	0%
Object Handled by Others			2	2	0%
Continual Noise		2		2	0%
Rubbed or Abraded, NOC		2		2	0%
Person in Act of a Crime	1		1	2	0%
Abnormal Air Pressure	2			2	0%
Electrical Current	1		1	2	0%
Welding or Throwing	1			1	0%
Hand Tool or Machine in Use		1		1	0%
Steam or Hot Fluids		1		1	0%
Collapsing Materials (Slides of Earth)	1			1	0%
Vehicle Upset	1			1	0%
Explosion or Flare Back		1		1	0%
Powered Hand Tool, Appliance		1		1	0%
Machine or Machinery		1		1	0%
<b>Grand Total</b>	<b>432</b>	<b>441</b>	<b>369</b>	<b>1242</b>	



<b>MPD Claim Cause (OSHA)</b>	<b>2011</b>	<b>2012</b>	<b>2013</b>	<b>Grand Total</b>	
Person in Act of a Crime	247	260	260	767	39%
Collision or Sideswipe with Another Ve	47	44	51	142	7%
Fall, Slip, Trip, NOC	40	40	41	121	6%
Other Than Physical Cause of Injury	36	38	30	104	5%
Strain or Injury By, NOC	21	33	36	90	5%
Struck or Injured, NOC	25	27	28	80	4%
Cut, Puncture, Scrape, NOC	29	25	20	74	4%
On Ice or Snow	17	13	41	71	4%
Contact with, NOC	15	20	13	48	2%
Animal or Insect	10	22	13	45	2%
Twisting	13	18	10	41	2%
Lifting	11	13	9	33	2%
Caught In, Under or Between, NOC	8	10	12	30	2%
Motor Vehicle, NOC	13	7	6	26	1%
On Stairs	10	9	5	24	1%
Pushing or Pulling	9	8	6	23	1%
Object Being Lifted or Handled	6	7	8	21	1%
Stationary Object	6	5	9	20	1%
Striking Against or Stepping On, NOC	7	6	7	20	1%
Dust, Gases, Fumes, or Vapors	5	8	6	19	1%
Cumulative, NOC	3	6	10	19	1%
Foreign Matter (Body) in Eye(s)	3	5	8	16	1%
Collision with a Fixed Object	9	3	4	16	1%
Fire or Flame	3	2	9	14	1%
Slipped, Did Not Fall	4	5	3	12	1%
Broken Glass	4	4	3	11	1%
Other-Miscellaneous, NOC	3	2	4	9	0%
Chemicals		4	4	8	0%
Repetitive Motion	4	1	2	7	0%
From Liquid or Grease Spills		2	4	6	0%
Jumping	2	3	1	6	0%
Motor Vehicle	4	1	1	6	0%
Falling or Flying Object	2	2	2	6	0%
Holding or Carrying	3	1	1	5	0%
Continual Noise	3		2	5	0%
From Different Level (Elevation)	3	1	1	5	0%
Object Handled		2	3	5	0%
Vehicle Upset	2		1	3	0%
Temperature Extremes	1		2	3	0%
Reaching	2		1	3	0%
Stepping on Sharp Object	1	1	1	3	0%
Using Tool or Machinery		1	1	2	0%
Fellow Worker	1		1	2	0%
Into Openings		1	1	2	0%
Hand Tool, Utensil; Not Powered	1		1	2	0%
Electrical Current		1		1	0%
Hand Tool or Machine in Use			1	1	0%
Rubbed or Abraded, NOC			1	1	0%
Moving Parts of Machine	1			1	0%
Welding or Throwing	1			1	0%
Crash of Water Vehicle	1			1	0%
Absorption, Ingestion or Inhalation, NOC		1		1	0%
Object Handled by Others		1		1	0%
<b>Grand Total</b>	<b>636</b>	<b>663</b>	<b>684</b>	<b>1983</b>	

### MPD Cause of Injuries

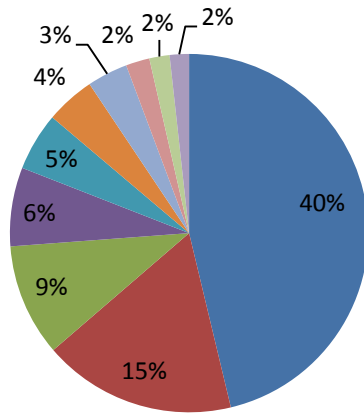


- Person in Act of a Crime
- Collision or Sideswipe with Another Vehicle
- Fall, Slip, Trip, NOC
- Other Than Physical Cause of Injury
- Strain or Injury By, NOC
- Struck or Injured, NOC
- Cut, Puncture, Scrape, NOC
- On Ice or Snow
- Contact with, NOC

<b>All City Nature of Injury (OSHA)</b>	<b>2011</b>	<b>2012</b>	<b>2013</b>	<b>Grand Total</b>	
Strain - an injury to muscle or muscle/t	725	797	787	2309	40%
Contusion/bruise (injury - skin is not br	320	230	320	870	15%
Sprain - an injury to ligament/bone unit	143	142	221	506	9%
Laceration/cut (wound/irregular tear of	123	123	109	355	6%
Contagious/communicable disease (nc	94	86	82	262	5%
Abrasion (scraping away of portion of s	70	79	73	222	4%
Inflammation/swelling/pain	95	50	38	183	3%
Foreign body (slivers, cinders, dirt, etc)	28	40	39	107	2%
Inhalation smoke/fume/gas	34	22	35	91	2%
Bite/sting, Insect	20	31	36	87	2%
Puncture wound (without foreign body	28	23	29	80	1%
Fracture (sudden breaking of a bone o	27	26	25	78	1%
Crushing injury (caught in, under or bet	19	34	20	73	1%
Unknown (not reported)	30	31	10	71	1%
Burn (thermal or radioactive)	15	18	11	44	1%
Bite, animal	8	18	11	37	1%
Mental stress	10	16	8	34	1%
Concussion of the brain	10	9	13	32	1%
Heat exhaustion/prostration	11	13	8	32	1%
Respiratory disorder (not silicosis/asbe	18	7	5	30	1%
Hearing Loss, occupational (not traum	6	10	11	27	0%
Bite, human	8	8	10	26	0%
Pain (if not otherwise listed as to caus	3	2	17	22	0%
Burn (chemical)	10	3	7	20	0%
Hernia/rupture (other than spinal)	7	1	9	17	0%
Dermatitis/rash	4	7	4	15	0%
Allergic reaction - to an allergen(s)	2	7	4	13	0%
Tendinitis/tenosynovitis/tendosynovitis/	2	5	4	11	0%
Fainting/syncope/vertigo	4	3	4	11	0%
Infestation (parasite)		3	5	8	0%
Angina pectoris, (heart pain)	3	2	2	7	0%
Dislocation (displacement of a bone)	3	3	1	7	0%
Blood poisoning/bacterial infection	2	1	4	7	0%
Dentures/teeth broken or damaged	4		2	6	0%
Hearing loss (traumatic only)	2		4	6	0%
Psychological disorder (other than mental stress)		4	1	5	0%
Carpal Tunnel Syndrome	4		1	5	0%
Asbestosis (asbestos dust exposure)		1	3	4	0%
Electrical shock and/or burn	2	1	1	4	0%
Herniation (spinal)		3	1	4	0%
Epicondylitis (tennis elbow)	1	2		3	0%
Vascular (blood vessel disorder)	2		1	3	0%
Cumulative Trauma (from normal work	1	1		2	0%
Myocardial infarction (heart attack)	1		1	2	0%
Gunshot	1		1	2	0%
Vision loss	1	1		2	0%
Infection (blood poisoning, pink eye, et	1	1		2	0%
Cancer/tumor (malignant)		1		1	0%
Cyst/tumor (non-malignant)		1		1	0%
Hematoma (blood tumor)			1	1	0%
Shock, traumatic (due to physical causes)		1		1	0%
Amputation, traumatic	1			1	0%
H.I.V. exposure/infection		1		1	0%
Hypertension (high blood pressure)		1		1	0%
Frostbite/freezing			1	1	0%
<b>Grand Total</b>	<b>1903</b>	<b>1869</b>	<b>1980</b>	<b>5752</b>	

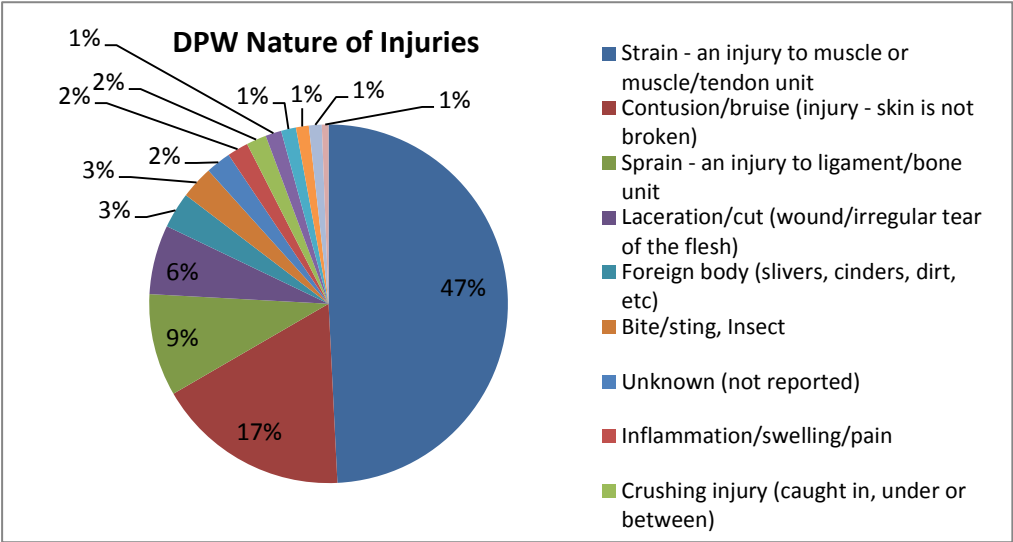


### City Nature of Injuries



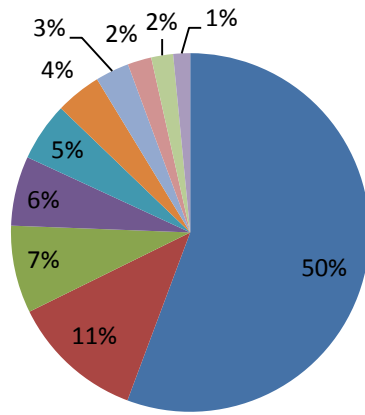
- Strain - an injury to muscle or muscle/tendon unit
- Contusion/bruise (injury - skin is not broken)
- Sprain - an injury to ligament/bone unit
- Laceration/cut (wound/irregular tear of the flesh)
- Contagious/communicable disease (noc)
- Abrasion (scraping away of portion of skin)
- Inflammation/swelling/pain
- Foreign body (slivers, cinders, dirt, etc)

<b>DPW Nature of Injury (OSHA)</b>	<b>2011</b>	<b>2012</b>	<b>2013</b>	<b>Grand Total</b>	
Strain - an injury to muscle or muscle/t	332	344	386	1062	47%
Contusion/bruise (injury - skin is not br	143	93	140	376	17%
Sprain - an injury to ligament/bone unit	55	46	98	199	9%
Laceration/cut (wound/irregular tear of	46	40	49	135	6%
Foreign body (slivers, cinders, dirt, etc)	18	29	23	70	3%
Bite/sting, Insect	14	20	30	64	3%
Unknown (not reported)	26	21	2	49	2%
Inflammation/swelling/pain	21	9	11	41	2%
Crushing injury (caught in, under or bet	10	18	11	39	2%
Abrasion (scraping away of portion of s	11	8	12	31	1%
Inhalation smoke/fume/gas	8	2	19	29	1%
Puncture wound (without foreign body	9	6	10	25	1%
Fracture (sudden breaking of a bone o	8	9	8	25	1%
Burn (chemical)	7	3	3	13	1%
Bite, animal	4	7		11	0%
Pain (if not otherwise listed as to cause)		1	9	10	0%
Burn (thermal or radioactive)	4	2	2	8	0%
Tendinitis/tenosynovitis/tendosynovitis/	1	3	3	7	0%
Mental stress	4	3		7	0%
Dermatitis/rash	3	1	2	6	0%
Hernia/rupture (other than spinal)	4		2	6	0%
Concussion of the brain		3	3	6	0%
Hearing Loss, occupational (not traumatic)		3	3	6	0%
Allergic reaction - to an allergen(s)	1	4		5	0%
Heat exhaustion/prostration	2	3		5	0%
Herniation (spinal)		2	1	3	0%
Psychological disorder (other than mental stress)		3		3	0%
Carpal Tunnel Syndrome	2		1	3	0%
Epicondylitis (tennis elbow)	1	2		3	0%
Respiratory disorder (not silicosis/asbe	1	1		2	0%
Hearing loss (traumatic only)			2	2	0%
Dentures/teeth broken or damaged			1	1	0%
Contagious/communicable disease (nc	1			1	0%
Dislocation (displacement of a bone)	1			1	0%
Frostbite/freezing			1	1	0%
Electrical shock and/or burn	1			1	0%
Asbestosis (asbestos dust exposure)		1		1	0%
Cyst/tumor (non-malignant)		1		1	0%
Blood poisoning/bacterial infection			1	1	0%
Amputation, traumatic	1			1	0%
Myocardial infarction (heart attack)			1	1	0%
Cumulative Trauma (from normal work	1			1	0%
Fainting/syncope/vertigo			1	1	0%
<b>Grand Total</b>	<b>740</b>	<b>688</b>	<b>835</b>	<b>2263</b>	



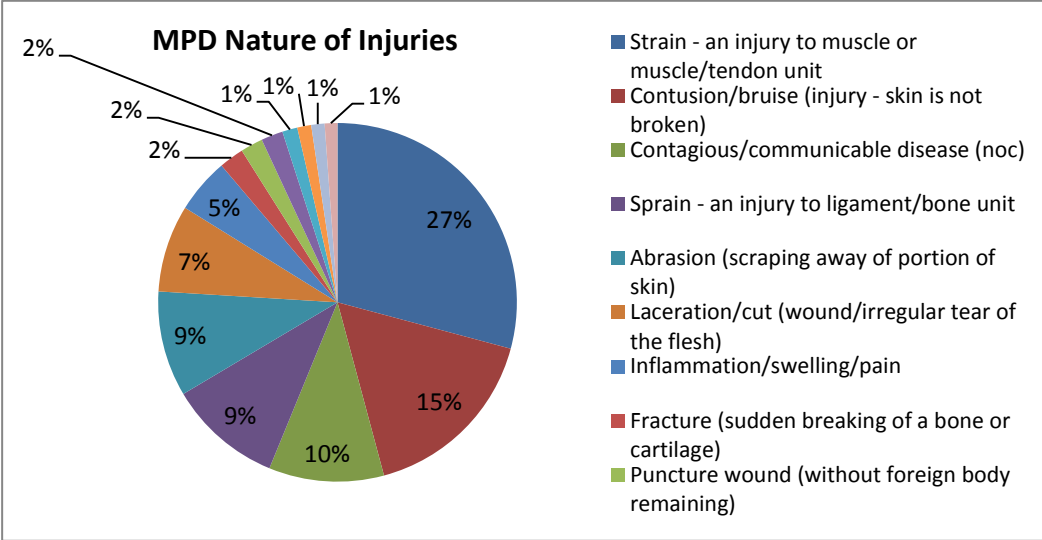
<b>MFD Nature of Injury (OSHA)</b>	<b>2011</b>	<b>2012</b>	<b>2013</b>	<b>Grand Total</b>	
Strain - an injury to muscle or muscle/t	198	239	184	621	50%
Contusion/bruise (injury - skin is not br	42	40	52	134	11%
Sprain - an injury to ligament/bone unit	35	26	27	88	7%
Contagious/communicable disease (nc	26	24	20	70	6%
Laceration/cut (wound/irregular tear of	19	28	12	59	5%
Inflammation/swelling/pain	30	8	8	46	4%
Burn (thermal or radioactive)	10	16	8	34	3%
Heat exhaustion/prostration	8	9	7	24	2%
Inhalation smoke/fume/gas	15	5	2	22	2%
Foreign body (slivers, cinders, dirt, etc)	4	8	5	17	1%
Puncture wound (without foreign body)	5	2	6	13	1%
Respiratory disorder (not silicosis/asbe	9	2	1	12	1%
Hernia/rupture (other than spinal)	3	1	7	11	1%
Crushing injury (caught in, under or bet	3	4	3	10	1%
Fracture (sudden breaking of a bone o	1	6	2	9	1%
Abrasion (scraping away of portion of s	2	6		8	1%
Fainting/syncope/vertigo	2	2	2	6	0%
Angina pectoris, (heart pain)	3	1	2	6	0%
Pain (if not otherwise listed as to cause	3	1	2	6	0%
Infestation (parasite)			5	5	0%
Blood poisoning/bacterial infection	1	1	3	5	0%
Bite/sting, Insect	1	2	2	5	0%
Dentures/teeth broken or damaged	3		1	4	0%
Unknown (not reported)		1	3	4	0%
Burn (chemical)	3		1	4	0%
Mental stress		3		3	0%
Hearing Loss, occupational (not traumatic)		1	1	2	0%
Concussion of the brain	1		1	2	0%
Cumulative Trauma (from normal work activities)		1		1	0%
Infection (blood poisoning, pink eye, etc)		1		1	0%
Dermatitis/rash	1			1	0%
Myocardial infarction (heart attack)	1			1	0%
Shock, traumatic (due to physical causes)		1		1	0%
Electrical shock and/or burn			1	1	0%
Vision loss	1			1	0%
Psychological disorder (other than mental stress)		1		1	0%
Vascular (blood vessel disorder)	1			1	0%
Bite, human	1			1	0%
Cancer/tumor (malignant)		1		1	0%
Bite, animal			1	1	0%
<b>Grand Total</b>	<b>432</b>	<b>441</b>	<b>369</b>	<b>1242</b>	

### MFD Nature of Injuries



- Strain - an injury to muscle or muscle/tendon unit
- Contusion/bruise (injury - skin is not broken)
- Sprain - an injury to ligament/bone unit
- Contagious/communicable disease (noc)
- Laceration/cut (wound/irregular tear of the flesh)
- Inflammation/swelling/pain
- Burn (thermal or radioactive)
- Heat exhaustion/prostration
- Inhalation smoke/fume/gas

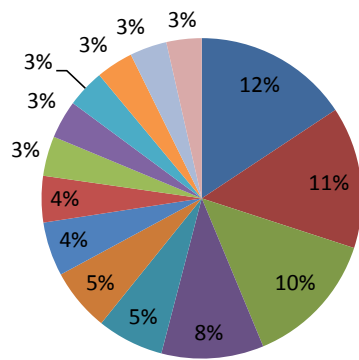
<b>MPD Nature of Injury (OSHA)</b>	<b>2011</b>	<b>2012</b>	<b>2013</b>	<b>Grand Total</b>	
Strain - an injury to muscle or muscle/t	160	188	186	534	27%
Contusion/bruise (injury - skin is not br	111	84	110	305	15%
Contagious/communicable disease (nc	67	62	61	190	10%
Sprain - an injury to ligament/bone unit	47	60	81	188	9%
Abrasion (scraping away of portion of s	53	63	58	174	9%
Laceration/cut (wound/irregular tear of	55	47	42	144	7%
Inflammation/swelling/pain	41	32	18	91	5%
Fracture (sudden breaking of a bone o	17	9	15	41	2%
Puncture wound (without foreign body	11	13	13	37	2%
Inhalation smoke/fume/gas	9	14	13	36	2%
Bite, human	7	8	10	25	1%
Concussion of the brain	9	6	8	23	1%
Bite, animal	4	9	9	22	1%
Mental stress	4	10	7	21	1%
Crushing injury (caught in, under or bet	4	10	5	19	1%
Foreign body (slivers, cinders, dirt, etc)	6	3	10	19	1%
Bite/sting, Insect	4	9	4	17	1%
Hearing Loss, occupational (not traum	5	5	7	17	1%
Respiratory disorder (not silicosis/asbe	8	4	3	15	1%
Dermatitis/rash		6	1	7	0%
Allergic reaction - to an allergen(s)		2	4	6	0%
Dislocation (displacement of a bone)	2	3	1	6	0%
Unknown (not reported)		4	1	5	0%
Hearing loss (traumatic only)	2		2	4	0%
Pain (if not otherwise listed as to cause)			4	4	0%
Fainting/syncope/vertigo	1	1	1	3	0%
Burn (chemical)			3	3	0%
Heat exhaustion/prostration	1	1	1	3	0%
Infestation (parasite)		3		3	0%
Asbestosis (asbestos dust exposure)			2	2	0%
Tendinitis/tenosynovitis/tendosynovitis/synovitis		2		2	0%
Gunshot	1		1	2	0%
Electrical shock and/or burn	1	1		2	0%
Carpal Tunnel Syndrome	2			2	0%
Burn (thermal or radioactive)	1		1	2	0%
Hypertension (high blood pressure)		1		1	0%
Blood poisoning/bacterial infection	1			1	0%
Hematoma (blood tumor)			1	1	0%
Infection (blood poisoning, pink eye, et	1			1	0%
Dentures/teeth broken or damaged	1			1	0%
Angina pectoris, (heart pain)		1		1	0%
Vision loss		1		1	0%
H.I.V. exposure/infection		1		1	0%
Psychological disorder (other than mental stress)			1	1	0%
<b>Grand Total</b>	<b>636</b>	<b>663</b>	<b>684</b>	<b>1983</b>	



All City by Body Part	2011	2012	2013	Grand Total	
Multiple Body Parts	420	229	35	684	12%
Knee (ACL, PCL, MCL or LCL)	183	185	256	624	11%
Low back - lumbar area, (muscle & soft tissue)	194	193	211	598	10%
Shoulder (clavicle, scapula & soft tissue)	129	135	186	450	8%
Finger (phalanges - 1st, 2nd & 3rd & soft tissue)	90	112	91	293	5%
Hand (metacarpal bones & soft tissue)	76	85	115	276	5%
Ankle (tarsal bones & soft tissue)	68	84	86	238	4%
Wrist (carpal bones & soft tissue)	57	74	73	204	4%
Lower leg (knee to ankle-fibula, tibia & soft tissue)	49	60	66	175	3%
Eye & eyelid	51	61	56	168	3%
Elbow	38	61	68	167	3%
Head - soft tissue (not otherwise listed)	47	48	68	163	3%
Internal organ (not otherwise listed)	57	67	39	163	3%
Forearm elbow to wrist- ulna, radius & soft tissue	45	50	60	155	3%
Neck - soft Tissue (not otherwise listed)	32	46	54	132	2%
Thumb (phalanges - 1st, 2nd & soft tissue)	47	40	41	128	2%
Foot or feet (metatarsal bones & soft tissue)	39	32	53	124	2%
Trunk - soft tissue (not otherwise listed)	8	38	60	106	2%
Facial bones, (other than skull & jaw)	26	30	31	87	2%
Unknown (not reported)	33	26	9	68	1%
Upperarm (shoulder to elbow-humerus & soft tissue)	22	20	26	68	1%
Upperleg-thigh (hip to knee-femur & soft tissue)	13	23	19	55	1%
Abdomen (diaphragm to pelvis)	16	16	21	53	1%
Groin (inguinal region)	9	21	21	51	1%
Hip joint (muscle & soft tissue)	11	8	28	47	1%
Middleback-thoracic area, (muscle & soft tissue)	12	9	18	39	1%
Ear, outer (auricle & auditory canal)	4	10	22	36	1%
Lung, bronchial tree	5	3	26	34	1%
Rib (bone & cartilage)	9	7	18	34	1%
Mental and Emotional function	8	16	8	32	1%
Mouth & lips	3	10	18	31	1%
Ear, middle & inner (ear drum & bony labyrinth)	8	9	13	30	1%
Heart	8	8	7	23	0%
Toe (phalanges - 1st, 2nd & 3rd & soft tissue)	5	4	11	20	0%
Forehead	7	6	7	20	0%
Heel (calcaneus bone & soft tissue)	9	2	3	14	0%
Brain	4	4	6	14	0%
Breast	6	6	2	14	0%
Nose & nasal cavity (soft tissue & bone)	6	4	4	14	0%
Buttock (gluteus maximus)	2	3	6	11	0%
Chest			11	11	0%
Thoracic, vertebrae	4	4	3	11	0%
Teeth & gums	4	2	4	10	0%
Sacrum & coccyx (tailbone)	4	2	4	10	0%
Spinal cord (thoracic, lumbar & sacral)	6	2	1	9	0%
Spinal cord, cervical spine	4	5		9	0%
Multiple Lower Extremities	7	1	1	9	0%
Chin (soft tissue)	3		3	6	0%
Pharynx (throat)	3		2	5	0%
Fingernail	1		3	4	0%
Achilles tendon	2	1	1	4	0%
Lumbar, vertebrae	1	2	1	4	0%
Disk, cervical spine	1	2		3	0%
Jaw bone (mandible)		1	2	3	0%
Pelvic bone	2	1		3	0%
Vertebrae, cervical spine	1		1	2	0%
Disk, (thoracic &/or lumbar)	1			1	0%
Patella			1	1	0%
Multiple Trunk	1			1	0%
Trachea (windpipe)	1			1	0%
Larynx (voice box)	1			1	0%
Scalp (soft tissue) & hair		1		1	0%
<b>Grand Total</b>	<b>1903</b>	<b>1869</b>	<b>1980</b>	<b>5752</b>	



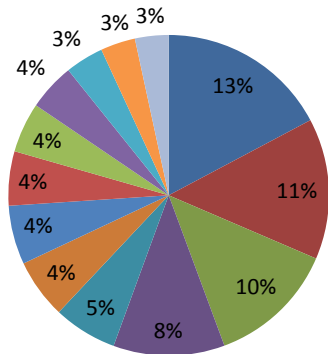
### City Injuries by Body Part



- Multiple Body Parts
- Knee (ACL, PCL, MCL or LCL)
- Low back - lumbar area, (muscle & soft tissue)
- Shoulder (clavicle, scapula & soft tissue)
- Finger (phalanges - 1st, 2nd & 3rd & soft tissue)
- Hand (metacarpal bones & soft tissue)
- Ankle (tarsal bones & soft tissue)
- Wrist (carpal bones & soft tissue)
- Lower leg (knee to ankle-fibula, tibia & soft tissue)

<b>DPW by Body Part</b>	<b>2011</b>	<b>2012</b>	<b>2013</b>	<b>Grand Total</b>	
Low back - lumbar area, (muscle & soft tissue)	94	85	111	290	13%
Shoulder (clavicle, scapula & soft tissue)	67	65	107	239	11%
Knee (ACL, PCL, MCL or LCL)	59	62	96	217	10%
Multiple Body Parts	127	55	7	189	8%
Finger (phalanges - 1st, 2nd & 3rd & soft tissue)	37	44	27	108	5%
Hand (metacarpal bones & soft tissue)	26	31	44	101	4%
Wrist (carpal bones & soft tissue)	28	31	41	100	4%
Ankle (tarsal bones & soft tissue)	29	23	40	92	4%
Elbow	19	32	34	85	4%
Eye & eyelid	23	31	26	80	4%
Lower leg (knee to ankle-fibula, tibia & soft tissue)	17	20	28	65	3%
Head - soft tissue (not otherwise listed)	18	17	24	59	3%
Foot or feet (metatarsal bones & soft tissue)	18	16	23	57	3%
Forearm elbow to wrist- ulna, radius & soft tissue	17	19	17	53	2%
Unknown (not reported)	26	20	2	48	2%
Neck - soft Tissue (not otherwise listed)	10	16	20	46	2%
Thumb (phalanges - 1st, 2nd & soft tissue)	19	11	14	44	2%
Upperarm(shoulder to elbow-humerus & soft tissue)	9	9	17	35	2%
Trunk - soft tissue (not otherwise listed)	5	12	16	33	1%
Hip joint (muscle & soft tissue)	4	3	21	28	1%
Groin (inguinal region)	3	8	14	25	1%
Facial bones, (other than skull & jaw)	6	10	7	23	1%
Abdomen (diaphragm to pelvis)	7	9	7	23	1%
Upperleg-thigh (hip to knee-femur & soft tissue)	8	7	4	19	1%
Internal organ (not otherwise listed)	11	6	2	19	1%
Rib (bone & cartilage)	5	4	9	18	1%
Middleback-thoracic area, (muscle & soft tissue)	6	3	8	17	1%
Ear, outer (auricle & auditory canal)		5	10	15	1%
Lung, bronchial tree			14	14	1%
Mouth & lips	1	4	6	11	0%
Forehead	5	3	3	11	0%
Ear, middle & inner (ear drum & bony labyrinth)	1	3	5	9	0%
Mental and Emotional function	3	5		8	0%
Sacrum & coccyx (tailbone)	3	1	3	7	0%
Breast	4	3		7	0%
Toe (phalanges - 1st, 2nd & 3rd & soft tissue)	3	1	2	6	0%
Nose & nasal cavity (soft tissue & bone)	1	1	4	6	0%
Multiple Lower Extremities	4	1	1	6	0%
Chest			6	6	0%
Thoracic, vertebrae	2	2	2	6	0%
Buttock (gluteus maximus)	1	2	2	5	0%
Heel (calcaneus bone & soft tissue)	3	1	1	5	0%
Spinal cord, cervical spine	2	3		5	0%
Teeth & gums		1	2	3	0%
Brain	1	1	1	3	0%
Chin (soft tissue)	1		1	2	0%
Pharynx (throat)	1		1	2	0%
Jaw bone (mandible)			2	2	0%
Spinal cord (thoracic, lumbar & sacral)	1		1	2	0%
Lumbar, vertebrae		2		2	0%
Heart			1	1	0%
Multiple Trunk	1			1	0%
Disk, cervical spine	1			1	0%
Fingernail			1	1	0%
Disk, (thoracic &/or lumbar)	1			1	0%
Pelvic bone	1			1	0%
Achilles tendon	1			1	0%
<b>Grand Total</b>	<b>740</b>	<b>688</b>	<b>835</b>	<b>2263</b>	

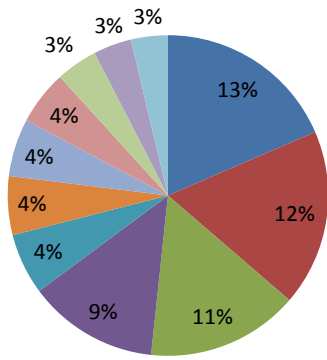
### DPW Injuries by Body Part



- Low back - lumbar area, (muscle & soft tissue)
- Shoulder (clavicle, scapula & soft tissue)
- Knee (ACL, PCL, MCL or LCL)
- Multiple Body Parts
- Finger (phalanges - 1st, 2nd & 3rd & soft tissue)
- Hand (metacarpal bones & soft tissue)
- Wrist (carpal bones & soft tissue)
- Ankle (tarsal bones & soft tissue)
- Elbow

<b>MFD by Body Part</b>	<b>2011</b>	<b>2012</b>	<b>2013</b>	<b>Grand Total</b>	
Low back - lumbar area, (muscle & soft tissue)	52	59	48	159	13%
Knee (ACL, PCL, MCL or LCL)	56	45	52	153	12%
Multiple Body Parts	78	41	13	132	11%
Shoulder (clavicle, scapula & soft tissue)	44	38	31	113	9%
Finger (phalanges - 1st, 2nd & 3rd & soft tissue)	18	23	12	53	4%
Ankle (tarsal bones & soft tissue)	19	20	12	51	4%
Internal organ (not otherwise listed)	14	22	14	50	4%
Trunk - soft tissue (not otherwise listed)		17	30	47	4%
Lower leg (knee to ankle-fibula, tibia & soft tissue)	7	15	14	36	3%
Eye & eyelid	11	13	9	33	3%
Neck - soft Tissue (not otherwise listed)	8	14	10	32	3%
Hand (metacarpal bones & soft tissue)	7	15	9	31	2%
Foot or feet (metatarsal bones & soft tissue)	10	9	12	31	2%
Wrist (carpal bones & soft tissue)	8	14	7	29	2%
Elbow	6	13	10	29	2%
Head - soft tissue (not otherwise listed)	7	11	7	25	2%
Abdomen (diaphragm to pelvis)	8	6	11	25	2%
Forearm elbow to wrist- ulna, radius & soft tissue	11	6	6	23	2%
Thumb (phalanges - 1st, 2nd & soft tissue)	9	5	7	21	2%
Heart	8	6	6	20	2%
Groin (inguinal region)	3	11	5	19	2%
Facial bones, (other than skull & jaw)	7	4	7	18	1%
Upperarm(shoulder to elbow-humerus)	3	3	5	11	1%
Mouth & lips	2	4	5	11	1%
Brain	3	3	3	9	1%
Upperleg-thigh (hip to knee-femur & soft tissue)	2	1	4	7	1%
Middleback-thoracic area, (muscle & soft tissue)	3	1	3	7	1%
Ear, middle & inner (ear drum & bony labyrinth)	2	2	2	6	0%
Ear, outer (auricle & auditory canal)	2	2	1	5	0%
Hip joint (muscle & soft tissue)	3	2		5	0%
Lung, bronchial tree	2	1	2	5	0%
Teeth & gums	3		1	4	0%
Nose & nasal cavity (soft tissue & bone)	4			4	0%
Heel (calcaneus bone & soft tissue)	2	1		3	0%
Spinal cord (thoracic, lumbar & sacral)	1	2		3	0%
Mental and Emotional function		3		3	0%
Chest			3	3	0%
Spinal cord, cervical spine	1	2		3	0%
Unknown (not reported)	1		1	2	0%
Rib (bone & cartilage)	1		1	2	0%
Pharynx (throat)	2			2	0%
Thoracic, vertebrae		1	1	2	0%
Toe (phalanges - 1st, 2nd & 3rd & soft tissue)			2	2	0%
Buttock (gluteus maximus)		1	1	2	0%
Forehead		1		1	0%
Chin (soft tissue)			1	1	0%
Vertebrae, cervical spine	1			1	0%
Achilles tendon		1		1	0%
Sacrum & coccyx (tailbone)		1		1	0%
Breast	1			1	0%
Multiple Lower Extremities	1			1	0%
Disk, cervical spine		1		1	0%
Jaw bone (mandible)		1		1	0%
Lumbar, vertebrae			1	1	0%
Larynx (voice box)	1			1	0%
<b>Grand Total</b>	<b>432</b>	<b>441</b>	<b>369</b>	<b>1242</b>	

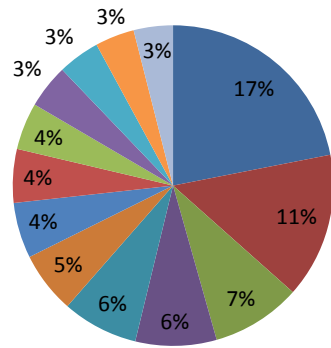
### MFD Injuries by Body Part



- Low back - lumbar area, (muscle & soft tissue)
- Knee (ACL, PCL, MCL or LCL)
- Multiple Body Parts
- Shoulder (clavicle, scapula & soft tissue)
- Finger (phalanges - 1st, 2nd & 3rd & soft tissue)
- Ankle (tarsal bones & soft tissue)
- Internal organ (not otherwise listed)
- Trunk - soft tissue (not otherwise listed)
- Lower leg (knee to ankle-fibula, tibia & soft tissue)
- Eye & eyelid

<b>MPD by Body Part</b>	<b>2011</b>	<b>2012</b>	<b>2013</b>	<b>Grand Total</b>	
Multiple Body Parts	192	126	14	332	17%
Knee (ACL, PCL, MCL or LCL)	59	66	97	222	11%
Hand (metacarpal bones & soft tissue)	41	37	59	137	7%
Finger (phalanges - 1st, 2nd & 3rd & s	31	42	51	124	6%
Low back - lumbar area, (muscle & sol	36	41	39	116	6%
Internal organ (not otherwise listed)	32	39	23	94	5%
Ankle (tarsal bones & soft tissue)	18	35	32	85	4%
Shoulder (clavicle, scapula & soft tissu	17	25	40	82	4%
Forearm elbow to wrist- ulna, radius &	12	24	36	72	4%
Head - soft tissue (not otherwise listed	18	18	31	67	3%
Wrist (carpal bones & soft tissue)	17	26	21	64	3%
Thumb (phalanges - 1st , 2nd & soft tis	19	22	19	60	3%
Lower leg (knee to ankle-fibula,tibia&s	21	23	16	60	3%
Eye & eyelid	17	17	19	53	3%
Neck - soft Tissue (not otherwise listec	13	14	20	47	2%
Elbow	11	15	21	47	2%
Facial bones, (other than skull & jaw)	13	15	16	44	2%
Foot or feet (metatarsal bones & soft ti	9	5	14	28	1%
Upperleg-thigh (hip to knee-femur & sc	2	13	11	26	1%
Upperarm(shoulder to elbow-humerus;	8	7	4	19	1%
Mental and Emotional function	3	8	7	18	1%
Trunk - soft tissue (not otherwise listec	3	6	8	17	1%
Ear, outer (auricle & auditory canal)	1	3	11	15	1%
Ear, middle & inner (ear drum & bony l	5	3	6	14	1%
Middleback-thoracic area, (muscle&so	3	5	6	14	1%
Rib (bone & cartilage)	2	3	8	13	1%
Hip joint (muscle & soft tissue)	4	3	6	13	1%
Toe (phalanges - 1st, 2nd & 3rd & soft	1	3	7	11	1%
Lung, bronchial tree	1		8	9	0%
Mouth & lips		2	7	9	0%
Forehead	1	2	4	7	0%
Groin (inguinal region)	3	2	2	7	0%
Unknown (not reported)	2	1	2	5	0%
Abdomen (diaphragm to pelvis)	1	1	3	5	0%
Thoracic, vertebrae	2	1		3	0%
Heel (cancaneus bone & soft tissue)	2		1	3	0%
Buttock (gluteus maximus)	1		2	3	0%
Spinal cord (thoracic, lumbar & sacral)	3			3	0%
Breast		2	1	3	0%
Teeth & gums	1	1	1	3	0%
Chin (soft tissue)	2		1	3	0%
Nose & nasal cavity (soft tissue & bone	1	2		3	0%
Chest			2	2	0%
Fingernail			2	2	0%
Achilles tendon	1		1	2	0%
Brain			2	2	0%
Heart		2		2	0%
Pelvic bone	1	1		2	0%
Multiple Lower Extremities	2			2	0%
Vertebrae, cervical spine			1	1	0%
Spinal cord, cervical spine	1			1	0%
Sacrum & coccyx (tailbone)	1			1	0%
Scalp (soft tissue) & hair		1		1	0%
Pharynx (throat)			1	1	0%
Trachea (windpipe)	1			1	0%
Lumbar, vertebrae	1			1	0%
Patella			1	1	0%
Disk, cervical spine		1		1	0%
<b>Grand Total</b>	<b>636</b>	<b>663</b>	<b>684</b>	<b>1983</b>	

### MPD Injuries by Body Part



- Multiple Body Parts
- Knee (ACL, PCL, MCL or LCL)
- Hand (metacarpal bones & soft tissue)
- Finger (phalanges - 1st, 2nd & 3rd & soft tissue)
- Low back - lumbar area, (muscle & soft tissue)
- Internal organ (not otherwise listed)
- Ankle (tarsal bones & soft tissue)
- Shoulder (clavicle, scapula & soft tissue)
- Forearm elbow to wrist- ulna, radius & soft tissue