



# Certificate of Appropriateness

Milwaukee Historic Preservation Commission/841 N Broadway/Milwaukee, WI 53202/phone 414-286-5722

**Property  
Description of  
work**

**710 W. Historic Mitchell St., Mitchell Street Historic District**

Install one new channel letter wall sign with blue text on raceway as shown below.

**Date issued** 6/26/23

In accordance with the provisions of Section 320-21 (11) and (12) of the Milwaukee Code of Ordinances, the Milwaukee Historic Preservation Commission has issued a certificate of appropriateness for the work listed above. The work was found to be consistent with preservation guidelines. The following conditions apply to this certificate of appropriateness:

1. Mounting posts for signs shall be drilled into mortar joints only and not into the face of any brick or stone. Any surface-mounted electrical conduit shall be painted to match surrounding building material.

All work must be done in a craftsman-like manner, and must be completed within one year of the date this certificate was issued. Staff must approve any changes or additions to this certificate before work begins. Work that is not completed in accordance with this certificate may be subject to correction orders or citations. If you require technical assistance, please contact Historic Preservation staff as follows: Phone: (414) 286-5722 E-mail: [hpc@milwaukee.gov](mailto:hpc@milwaukee.gov).

If permits are required, you are responsible for obtaining them from the Milwaukee Development Center. If you have questions about permit requirements, please consult the Development Center's web site, [www.milwaukee.gov/lms](http://www.milwaukee.gov/lms), or call (414) 286-8210.

City of Milwaukee Historic Preservation

Copies to: Development Center, Ald. Perez

PARTIAL SOUTH ELEVATION

REMOVE EXISTING LETTERSET & RACEWAY AND  
REPLACE WITH NEW. PATCH MOUNTING HOLES AS NEEDED.



EXISTING VIEW - NTS



PROPOSED VIEW - NTS



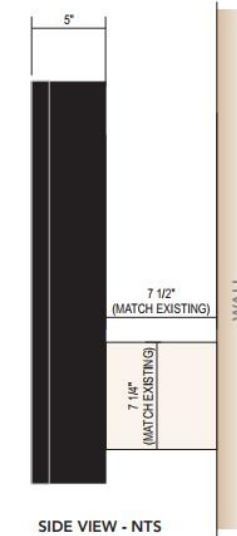
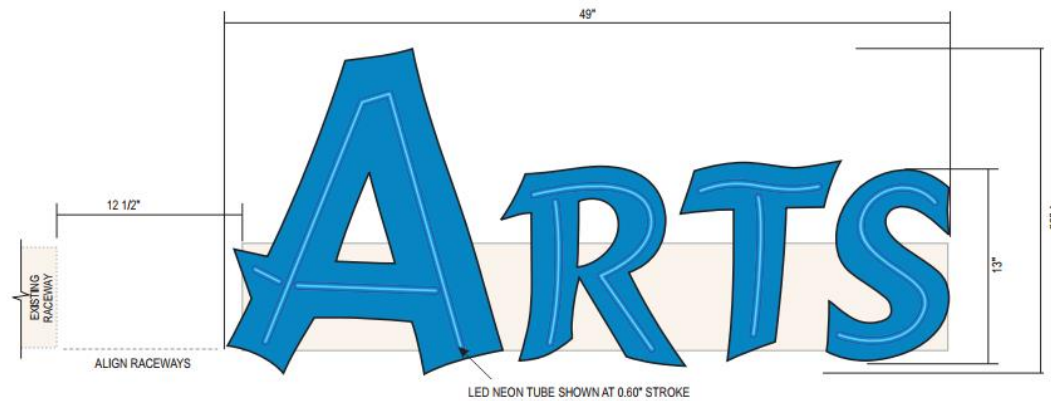
NIGHT VIEW - NTS

## New channel letter sign on raceway

OPEN FACE (LED) NEON CHANNEL LETTERS ON RACEWAY - QTY 1 SET

AREA: 7.5 SQ. FT.

SCALE: 1 1/2" = 1'-0"



### DESCRIPTION:

- FABRICATED ALUMINUM CHANNEL LETTERS W/ 5" RETURNS, INTERIOR BACKS AND RETURNS TO BE PAINTED C-1, EXTERIOR RETURNS TO BE C-2
- CLEAR ACRYLIC FACES ATTACHED TO RETURNS W/ BLACK TRIMCAP
- ILLUMINATED W/ EXPOSED C-1 LED NEON TUBE LIGHTING
- CUSTOM FABRICATED RACEWAY PAINTED C-3 (NEW RACEWAY TO MATCH EXISTING SIZE AND COLOR)
- RACEWAY TO BE MOUNTED TO BUILDING USING HARDWARE BEST SUITED FOR EXISTING CONDITIONS

### ADDITIONAL NOTES:

- REMOVE EXISTING "MEN'S WEAR" LETTERSET & RACEWAY, PATCH MOUNTING HOLES AS NEEDED
- NEW LETTERS TO TIE INTO EXISTING POWER

### COLORS

- C-1 PMS 3005C BROMO BLUE
- C-2 BLACK
- C-3 MATCH SW7556 CREME (EXISTING RACEWAY COLOR) CLIENT TO CONFIRM

FONT(S)  
CANCUN



SITE PLAN - NTS

Sign face details