



P O Box 240782 Milwaukee, WI. 53224

Office: 4141 W. Bradley Rd. # 104 , Milwaukee, WI 53209

PLAN OF OPERATION
For Submission to the City of Milwaukee on
November 15, 2004

The address of the building in question is 7368 North Teutonia Ave in Milwaukee, Wisconsin. Calvary Chapel of Milwaukee, Inc., a church, is interested in this building. The building consists of 4,400 square feet of space, a main assembly room of 1,102 square feet with 140 seats, and will be used for purposes including (but not limited to) church worship and congregational services, ministry meetings, weddings, funerals, outreaches to the community, bible studies, children and youth ministries, office and administrative functions, the distribution of religious materials, classes and/or educational meetings relevant to members of the church, and any other functions pertinent to the church and ministerial functions.

The lot at 7368 North Teutonia Ave faces west. Behind the lot (to the east) is a railroad track. A veterinary clinic is located to the immediate north of the building and just north of the clinic is a residential home. The lot to the south of the building is occupied. Across the street are apartment complexes.

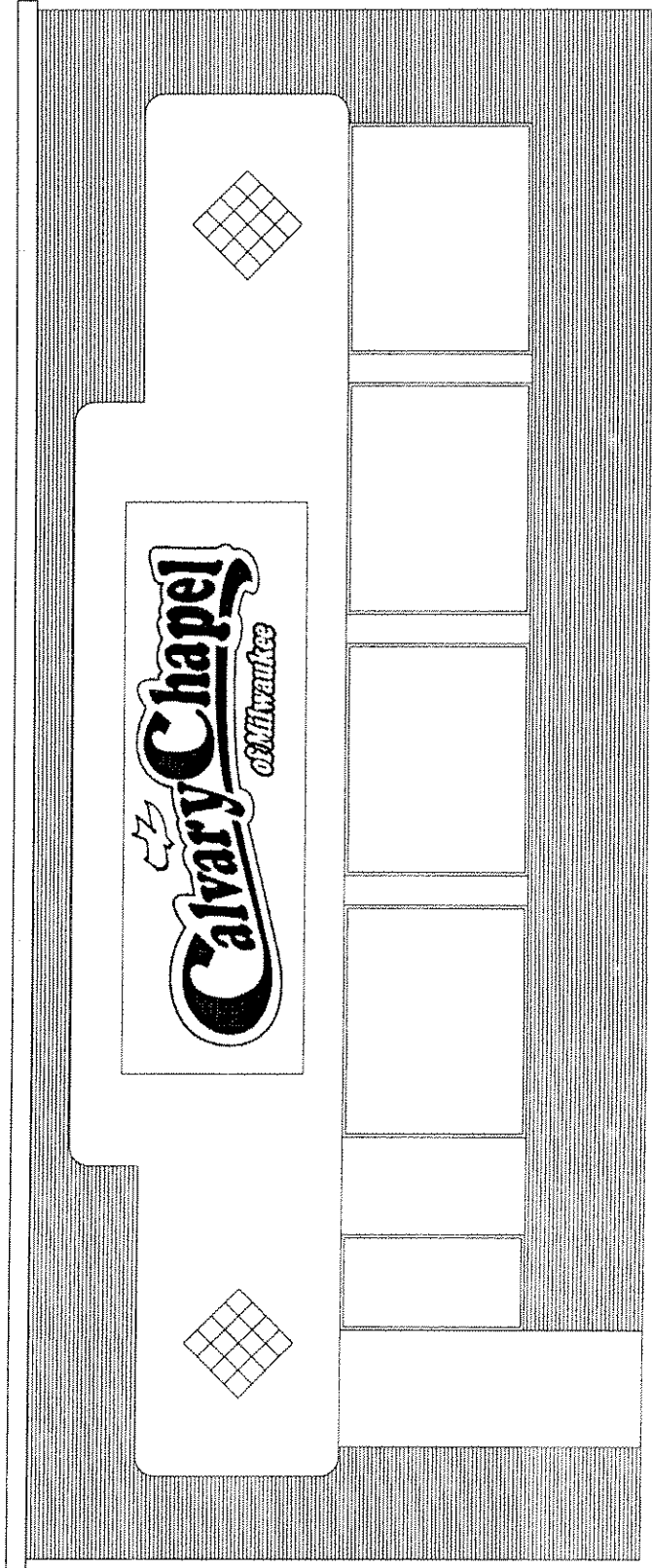
Calvary Chapel of Milwaukee will pose no hardships to the city or its residents. On-site parking is sufficient to accommodate the church and its members. The primary use of the building will be during hours of low traffic volume.

Calvary Chapel of Milwaukee serves a diverse congregation of worshipers of the Lord Jesus Christ from all locations, ages, and ethnic backgrounds. Our congregants come from local and surrounding areas. At this time we serve approximately 70 congregants.

Currently Calvary Chapel of Milwaukee has only one employee. Calvary Chapel of Milwaukee will have Sunday morning and Wednesday evening services, along with standard office hours from 8am to 5pm Monday through Friday. Additional hours of operation fluctuate based on the needs of the ministry.

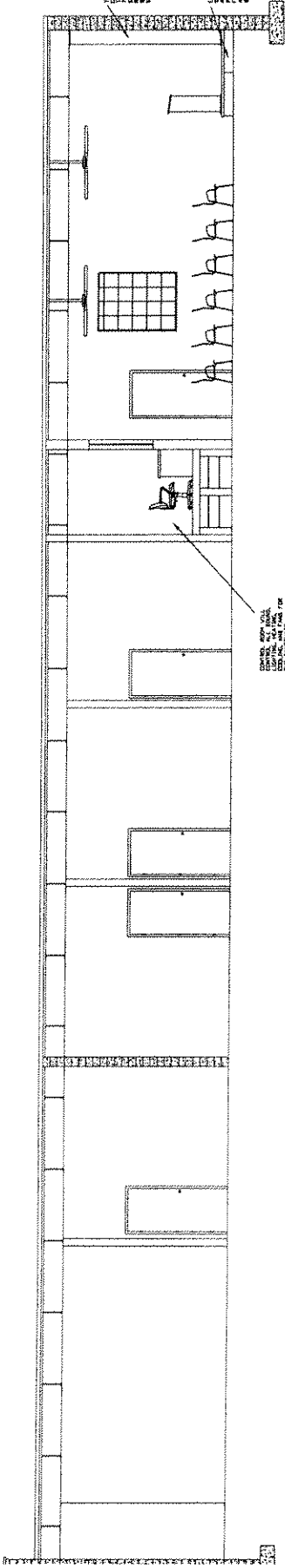
There are 43 existing parking spaces located on the property. Street parking is available off-site along the west side of the building on Teutonia. No vehicles will be necessary for the delivery or pickup of goods. Congregant and employee vehicles will enter and exit from the west driveway of the property. Parking is available on premises.

If you abide in My word, you are My disciples indeed. And you shall know the truth and the truth shall set you free." --Jesus @ John 8:31-32 (NKJV)



PLAN, 1/4" = 1'-0"
DATE: 11/15/54
BY: [illegible]
CHECKED BY: [illegible]
APPROVED BY: [illegible]

SECTION, 1/4" = 1'-0"
DATE: 11/15/54
BY: [illegible]
CHECKED BY: [illegible]
APPROVED BY: [illegible]



SECTION, 1/4" = 1'-0"
DATE: 11/15/54
BY: [illegible]
CHECKED BY: [illegible]
APPROVED BY: [illegible]

