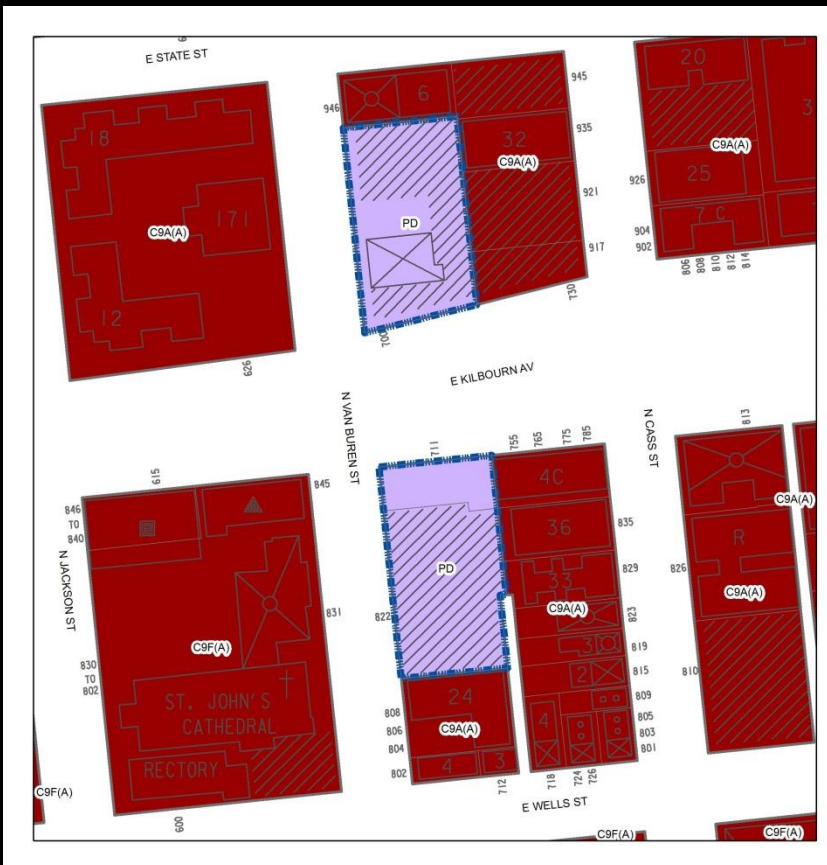
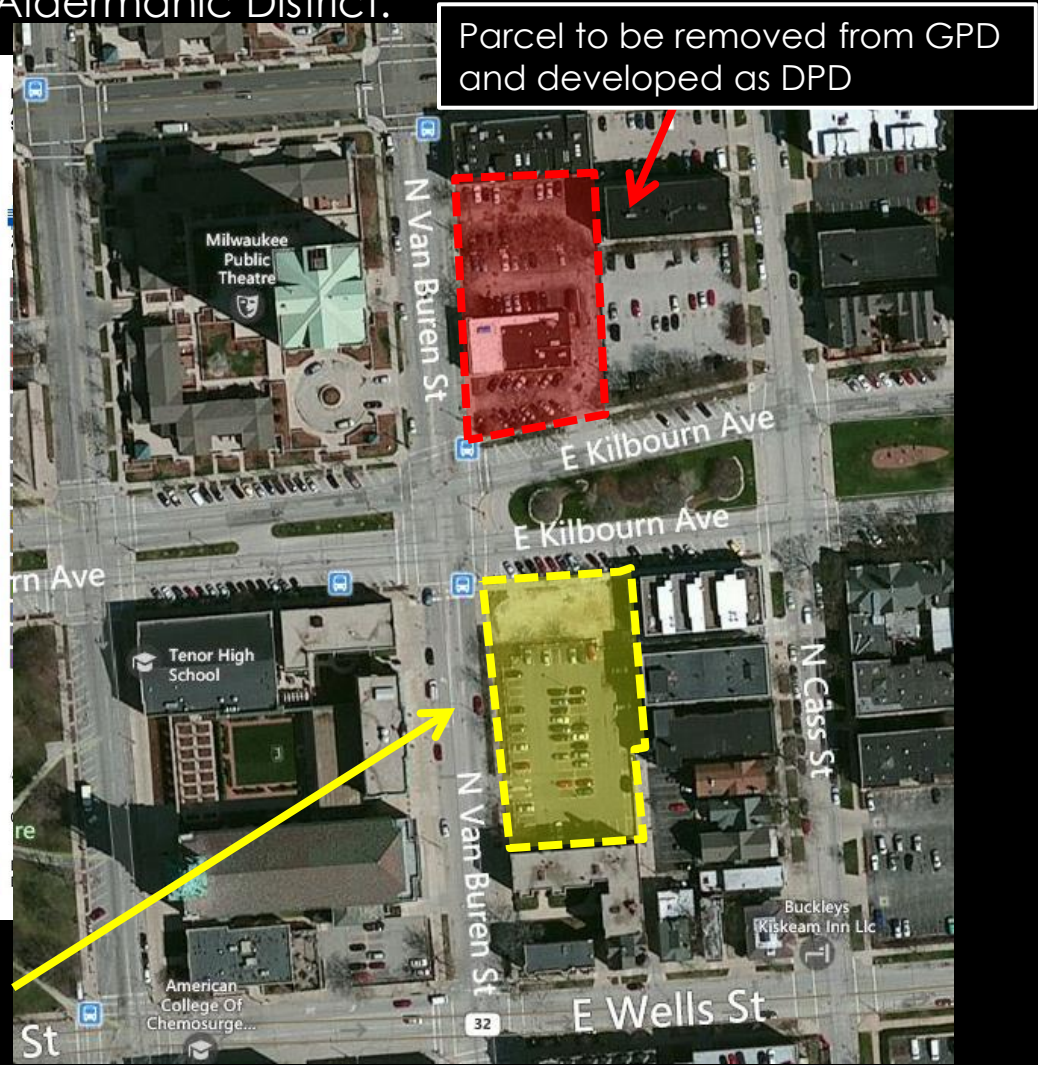


File Nos. 140578 and 140579. Substitute ordinances relating to the First Amendment to a General Planned Development (GPD) located at 700 East Kilbourn Avenue, 711 East Kilbourn Avenue and 822 North Van Buren Street, and the change in zoning from Detailed Planned Development (DPD) known as Bookends North to a DPD for a mixed-use building on land located at 700 East Kilbourn Avenue, on the north side of East Kilbourn Avenue, east of North Van Buren Street, in the 4th Aldermanic District.



Parcel to remain GPD for future development



File Nos. 140578 and 140579. Substitute ordinances relating to the First Amendment to a General Planned Development (GPD) located at 700 East Kilbourn Avenue, 711 East Kilbourn Avenue and 822 North Van Buren Street, and the change in zoning from Detailed Planned Development (DPD) known as Bookends North to a DPD for a mixed-use building on land located at 700 East Kilbourn Avenue, on the north side of East Kilbourn Avenue, east of North Van Buren Street, in the 4th Aldermanic District.

Development Site



View of site from E Kilbourn Ave

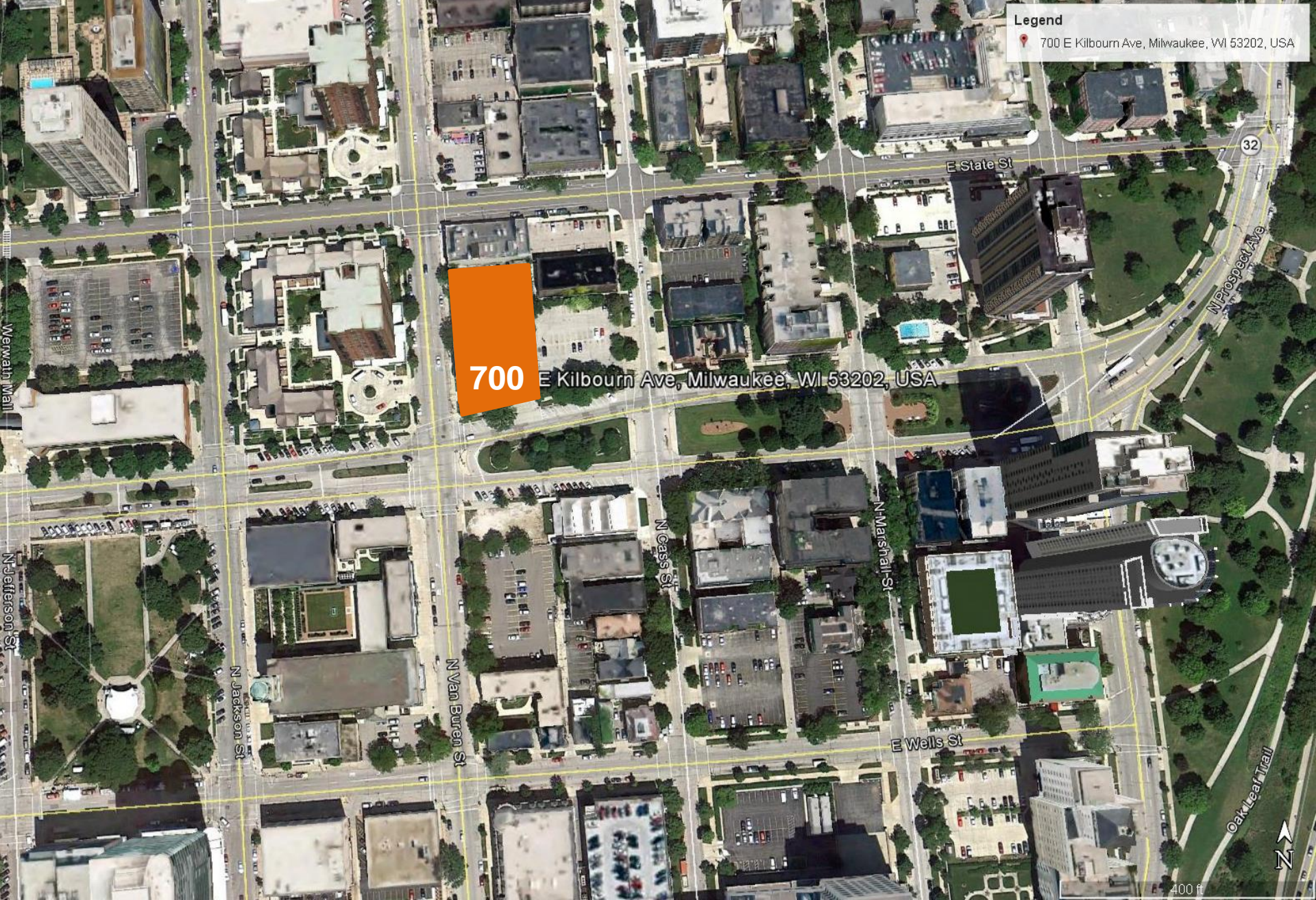


View of site from corner of E Kilbourn and N Van Buren

700 East Kilbourn Ave

City of Milwaukee
City Plan Commission

September 29, 2014



Legend
700 E Kilbourn Ave, Milwaukee, WI 53202, USA

700 E Kilbourn Ave, Milwaukee, WI 53202, USA

Aerial View

Commercial

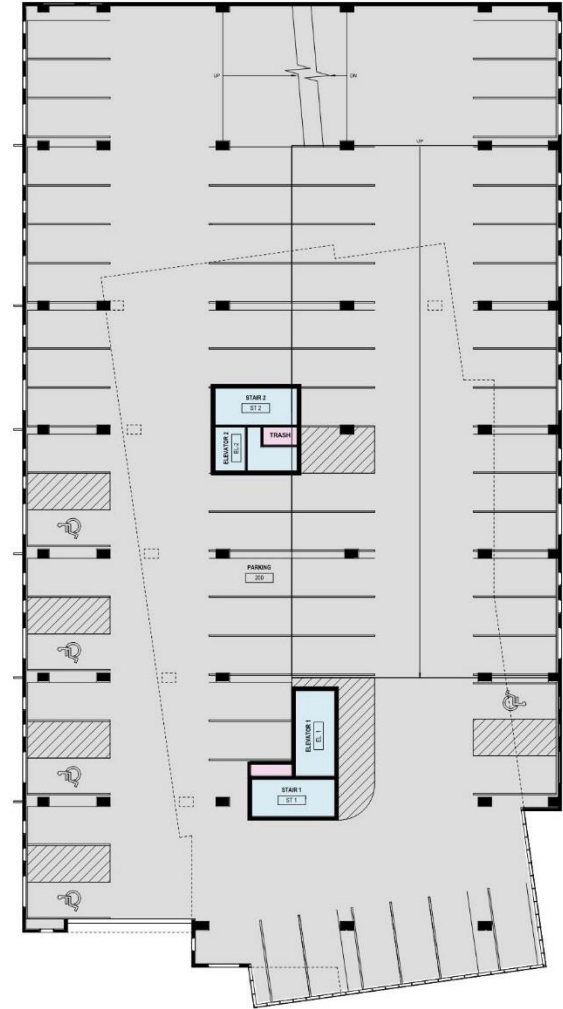
Open Plaza

Parking

Residential

Pet Amenity

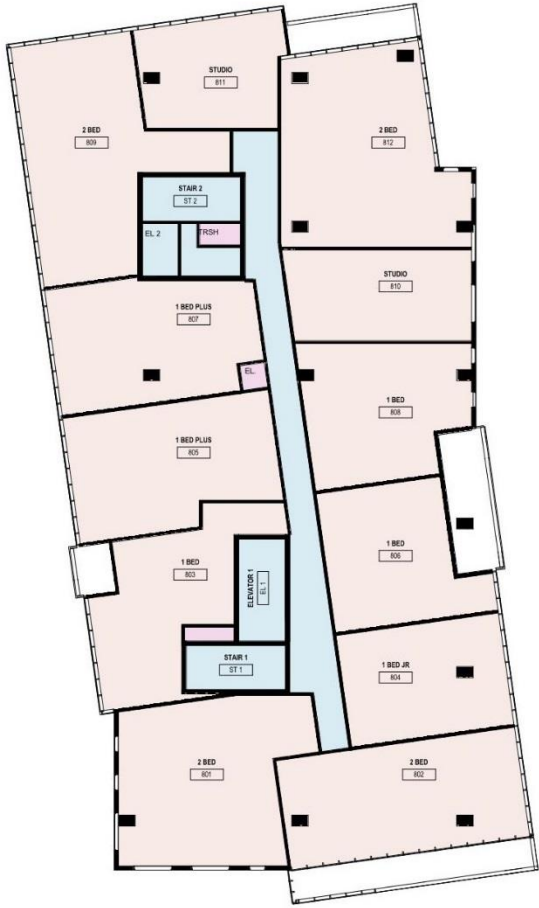
Loading



Ground Floor & Parking



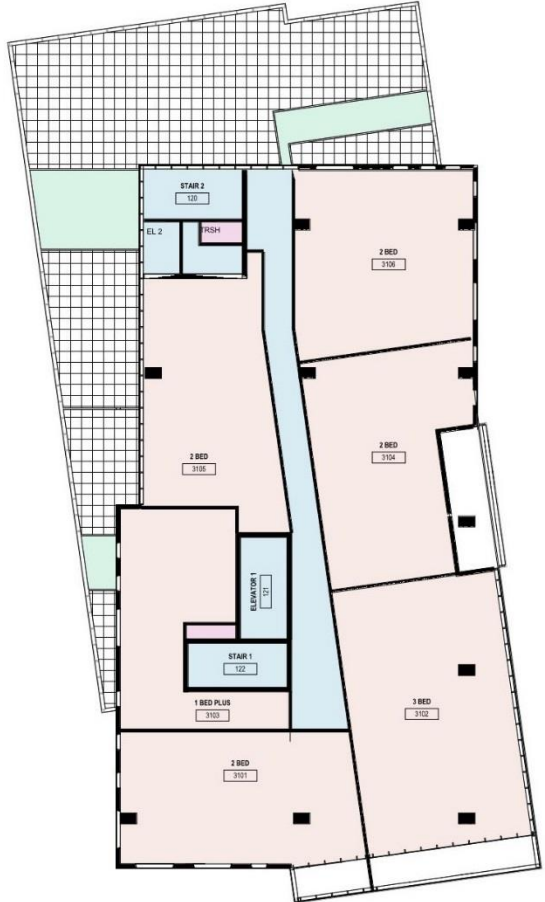
CARROLL PROPERTIES
RESIDENTIAL AND COMMERCIAL PROPERTY DEVELOPMENT



FLOORS 8-13

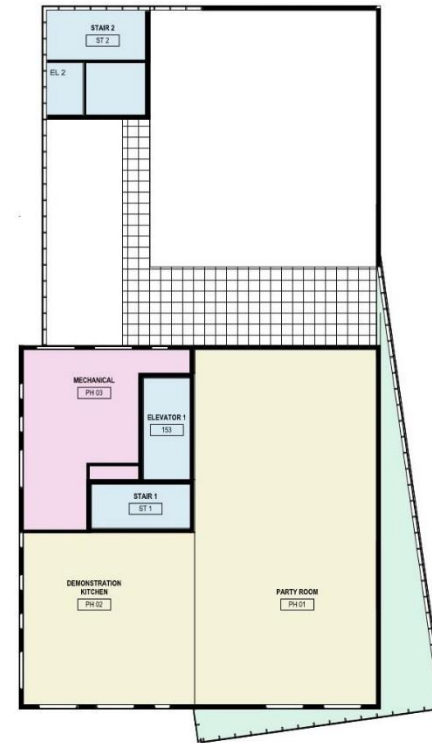
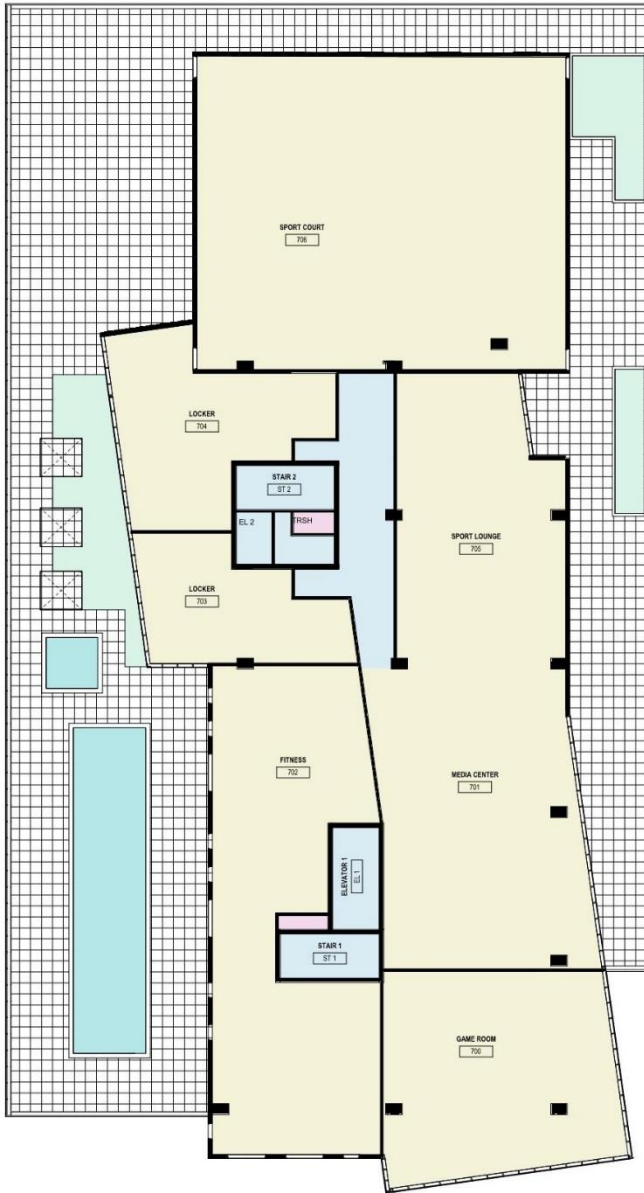


FLOORS 14-30



FLOORS 31-35

Residential



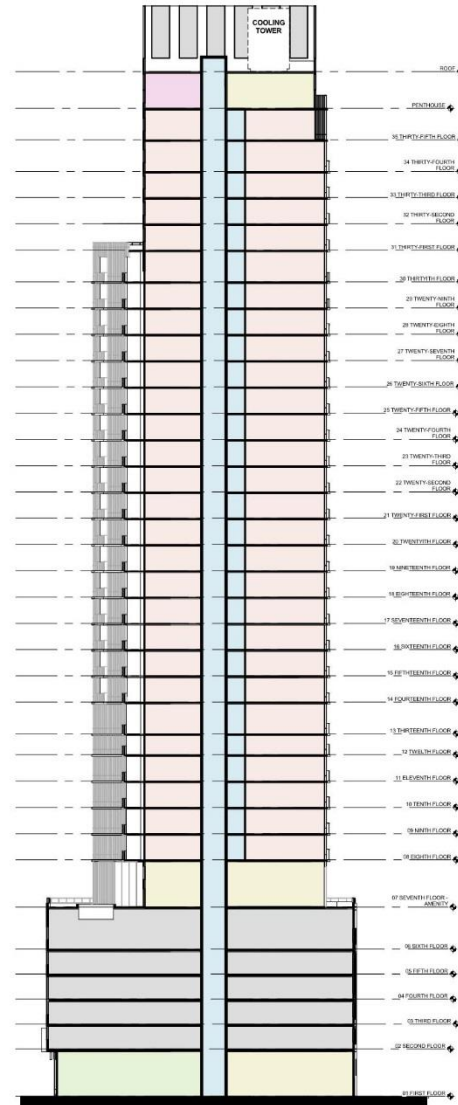
Amenity & Penthouse

- Mechanical
 - Amenity

- Residential

- Amenity
- Parking

- Commercial



Section



Southwest and Southeast



CARROLL PROPERTIES
RESIDENTIAL AND COMMERCIAL PROPERTY DEVELOPMENT



Southwest



CARROLL PROPERTIES
RESIDENTIAL AND COMMERCIAL PROPERTY DEVELOPMENT



Southeast



CARROLL PROPERTIES
RESIDENTIAL AND COMMERCIAL PROPERTY DEVELOPMENT

