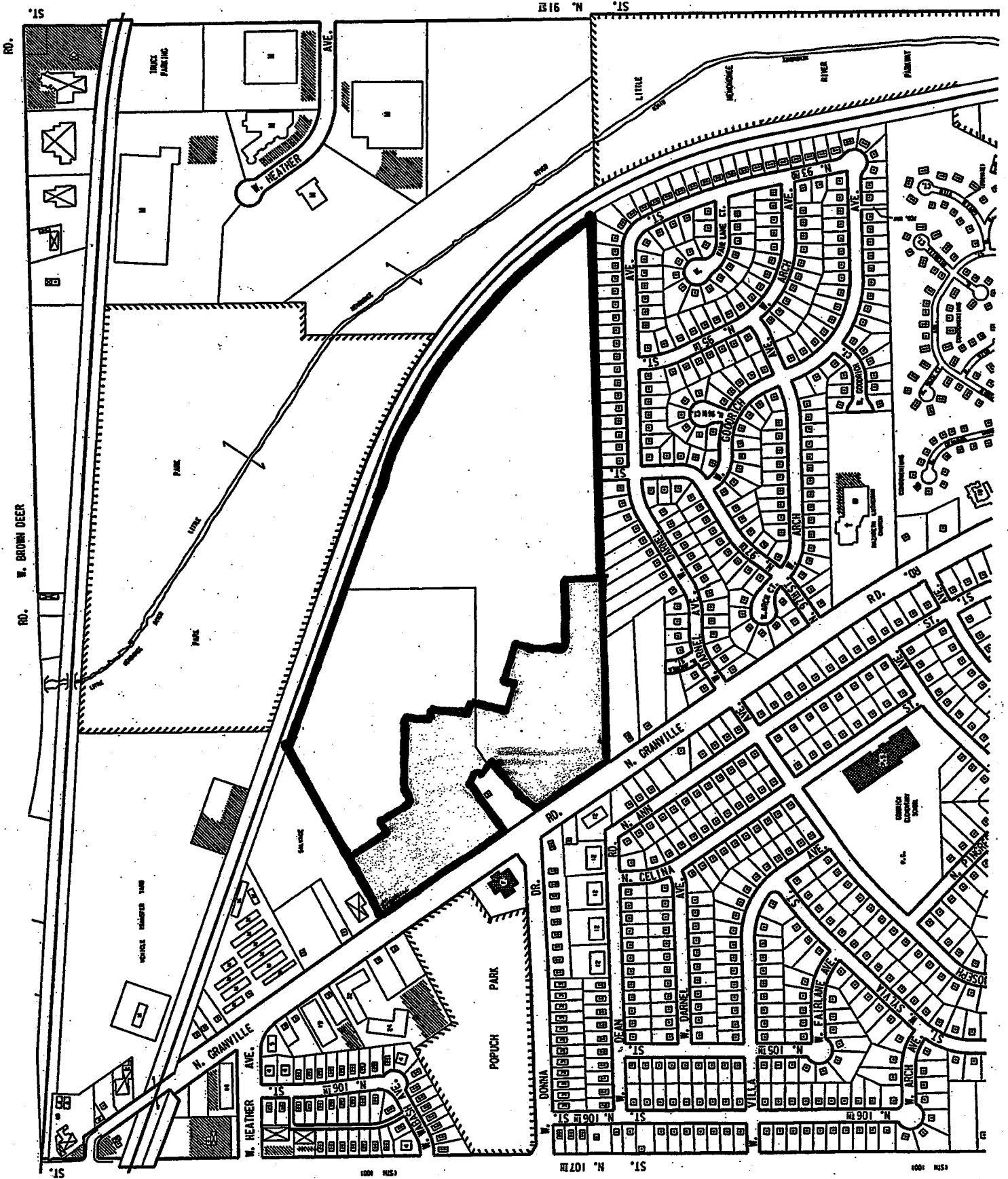


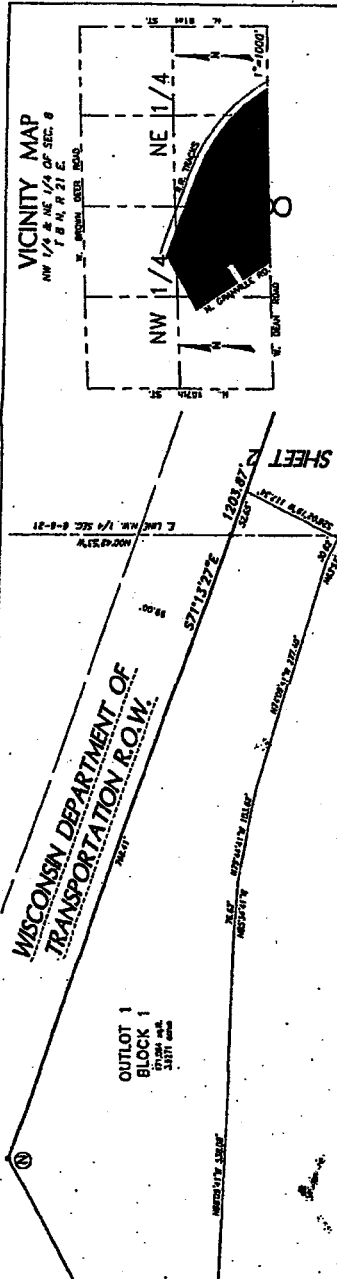
Final Plat

File No. 031142



# RIVER RIDGE

A DIVISION OF PART OF PARCELS 1 AND 2 OF CERTIFIED SURVEY MAP NO. 8202, BEING A PART OF THE SOUTHWEST 1/4 AND THE SOUTHWEST 1/4 OF THE NORTHWEST 1/4 AND PART OF THE NORTHEAST 1/4, EAST, IN THE CITY OF MANITOWISH, MANITOWISH COUNTY, WISCONSIN.



### CURVE TABLE

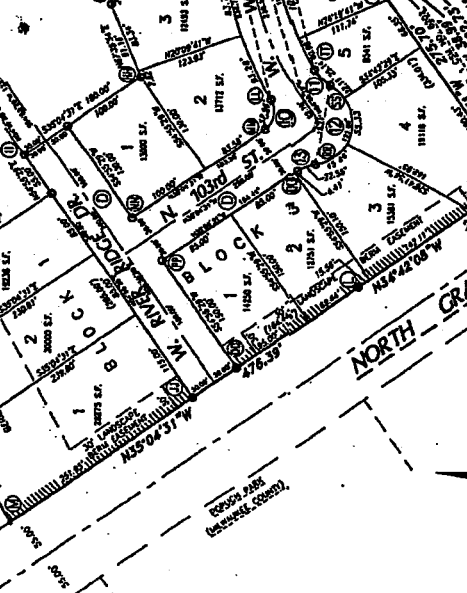
CURVE NO.	POINT	LENGTH	CHORD	CENTRAL ANGLE	CHORD BEARING	TANGENT	APPC	PT OF TANGENCY
1	1	120.00	120.00	90.00	S 89.110° E	83.141	48.000	120.00
1	2	120.00	120.00	90.00	S 89.110° E	83.141	48.000	120.00
1	3	120.00	120.00	90.00	S 89.110° E	83.141	48.000	120.00
1	4	120.00	120.00	90.00	S 89.110° E	83.141	48.000	120.00
1	5	120.00	120.00	90.00	S 89.110° E	83.141	48.000	120.00
1	6	120.00	120.00	90.00	S 89.110° E	83.141	48.000	120.00
1	7	120.00	120.00	90.00	S 89.110° E	83.141	48.000	120.00
1	8	120.00	120.00	90.00	S 89.110° E	83.141	48.000	120.00
1	9	120.00	120.00	90.00	S 89.110° E	83.141	48.000	120.00
1	10	120.00	120.00	90.00	S 89.110° E	83.141	48.000	120.00
1	11	120.00	120.00	90.00	S 89.110° E	83.141	48.000	120.00
1	12	120.00	120.00	90.00	S 89.110° E	83.141	48.000	120.00
1	13	120.00	120.00	90.00	S 89.110° E	83.141	48.000	120.00
1	14	120.00	120.00	90.00	S 89.110° E	83.141	48.000	120.00
1	15	120.00	120.00	90.00	S 89.110° E	83.141	48.000	120.00
1	16	120.00	120.00	90.00	S 89.110° E	83.141	48.000	120.00
1	17	120.00	120.00	90.00	S 89.110° E	83.141	48.000	120.00
1	18	120.00	120.00	90.00	S 89.110° E	83.141	48.000	120.00
1	19	120.00	120.00	90.00	S 89.110° E	83.141	48.000	120.00
1	20	120.00	120.00	90.00	S 89.110° E	83.141	48.000	120.00
1	21	120.00	120.00	90.00	S 89.110° E	83.141	48.000	120.00
1	22	120.00	120.00	90.00	S 89.110° E	83.141	48.000	120.00
1	23	120.00	120.00	90.00	S 89.110° E	83.141	48.000	120.00
1	24	120.00	120.00	90.00	S 89.110° E	83.141	48.000	120.00
1	25	120.00	120.00	90.00	S 89.110° E	83.141	48.000	120.00
1	26	120.00	120.00	90.00	S 89.110° E	83.141	48.000	120.00
1	27	120.00	120.00	90.00	S 89.110° E	83.141	48.000	120.00
1	28	120.00	120.00	90.00	S 89.110° E	83.141	48.000	120.00
1	29	120.00	120.00	90.00	S 89.110° E	83.141	48.000	120.00
1	30	120.00	120.00	90.00	S 89.110° E	83.141	48.000	120.00

### INTERIOR ANGLES

1	2	3	4	5	6	7	8	9	10
11	12	13	14	15	16	17	18	19	20
21	22	23	24	25	26	27	28	29	30
31	32	33	34	35	36	37	38	39	40
41	42	43	44	45	46	47	48	49	50
51	52	53	54	55	56	57	58	59	60

OUTLOT 2  
BLOCK 1

OUTLOT 1  
BLOCK 1



- INDICATES NO DIRECT VEHICULAR ACCESS TO NORTH GRANVILLE ROAD
- INDICATES 1" HIGH PIPE FOUND.
- INDICATES NO. 10 (1.170) BEARS, WT. 4.300 LBS. PER LINEAL FOOT, 30" IN LENGTH, SET UNLESS NOTED
- ALL OTHER LOT CORNERS HAVE 1" IRON PIPE (1.315" O.D.) 20" IN LENGTH, WT. 1.66 LBS. PER LINEAL FOOT, SET.
- BOUNDARIES ALONG CURVES ARE APC LENGTHS.
- ALL DIMENSIONS MEASURED AND SHOWN TO THE NEAREST HUNDREDTH OF A FOOT.
- BEARINGS REFERENCED TO THE SOUTH LINE OF THE NW 1/4 OF SECTION 21, TOWNSHIP 5 NORTH, RANGE 31 EAST, WHICH BEARS N 87°-40'-31" W 217.67'.
- RECORDED TO THE CITY OF MANITOWISH FOR PUBLIC STREET PURPOSES.

SEE SHEET 2



THIS INSTRUMENT WAS DRAFTED BY ERIC R. STURM, WISCONSIN REGISTERED LAND SURVEYOR 5-2309