

FILED 791 MAG 464

612

Sheet 1 of 3

MADONNA HIGH SCHOOL'S SECOND CERTIFIED SURVEY MAP NO. 2351

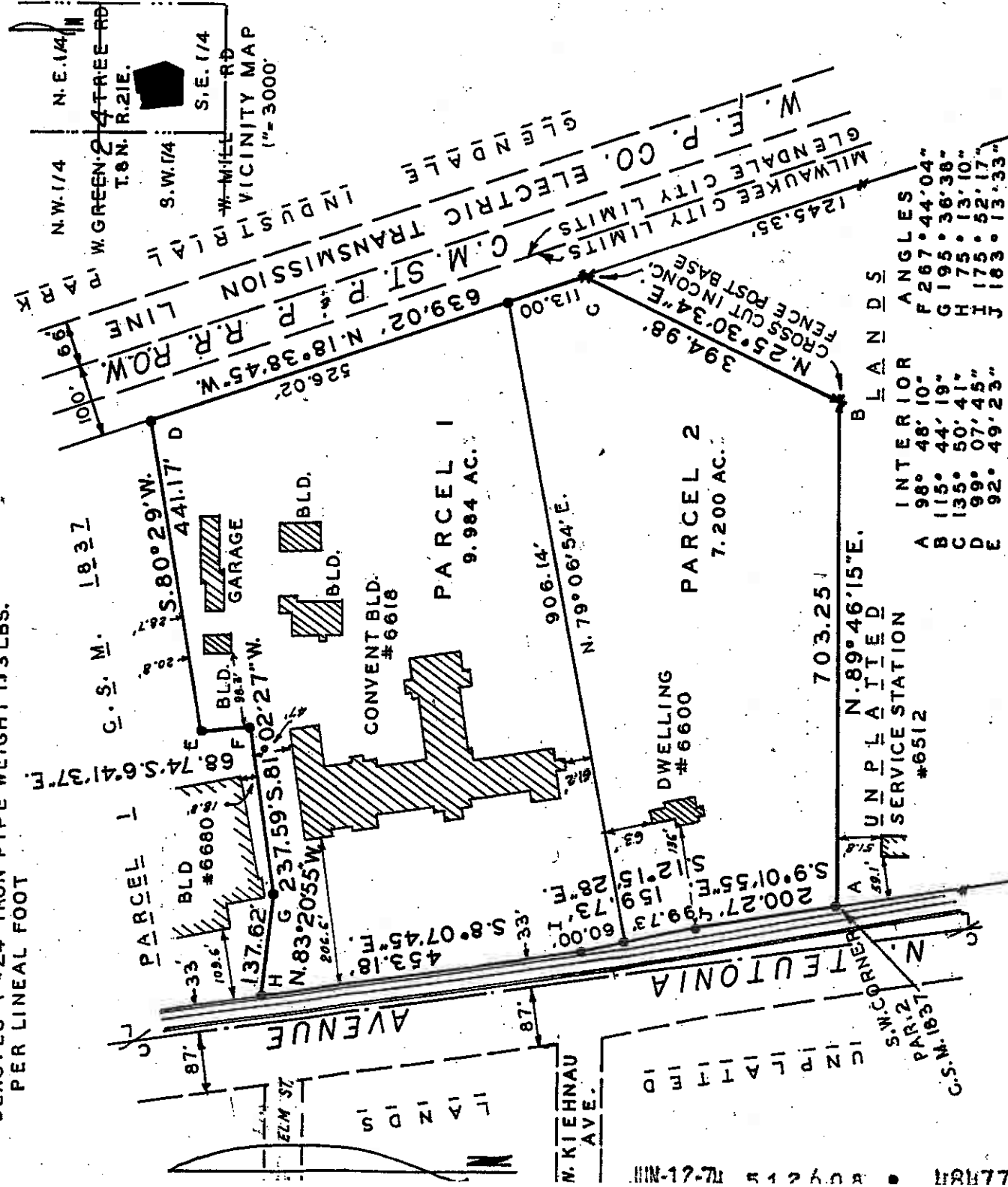
TAX KEY NO. 136-0012

of Parcel 2 of Certified Survey Map No. 1837, in the South East 1/4 of Section 24, Township 8 North, Range 21 East, in the City of Milwaukee, Milwaukee County, Wisconsin.

NOTING: I-D-40



NOTE
 • DENOTES 1"x24" IRON PIPE WEIGHT 113 LBS. PER LINEAL FOOT



INTERIOR ANGLES	LANDS
A 98° 48' 10"	F 267° 44' 04"
B 115° 44' 19"	G 195° 36' 38"
C 135° 50' 41"	H 75° 13' 10"
D 99° 07' 45"	I 175° 52' 17"
E 92° 49' 23"	J 163° 13' 33"

RECEIVED
 DEPT. OF CITY DEVELOPMENT
 APR 3 1974

APPROVED
 STAFF
 APR 3 1974

DEPT. OF CITY DEVELOPMENT
 OF MILWAUKEE

BUREAU OF ENGINEERS

APPROVED
 CHIEF DRAFTSMAN
 ENGINEER IN CHARGE
 SURVEY ENGINEER

APPROVED
 CHIEF DRAFTSMAN
 ENGINEER IN CHARGE
 SURVEY ENGINEER

74-20 CITY FEE DEPOSITED
 APR 15 1974 J.F.C.