



Historic Preservation Commission Meeting September 9, 2013

- Good Afternoon!
Please sign in at the door
- If you wish to speak on an issue or have your opinion noted by the commission, please fill out a form at the door and hand it to us

Accessible Entrance Addition

*St. Anthony Church,
Mitchell Street Historic
District*

1711 S. 9TH Street





Addition
originally
proposed
here





Looking West

Addition to
be built
behind
existing
connector

Mitchell

W Historic Mitchell St

St Anthony Church

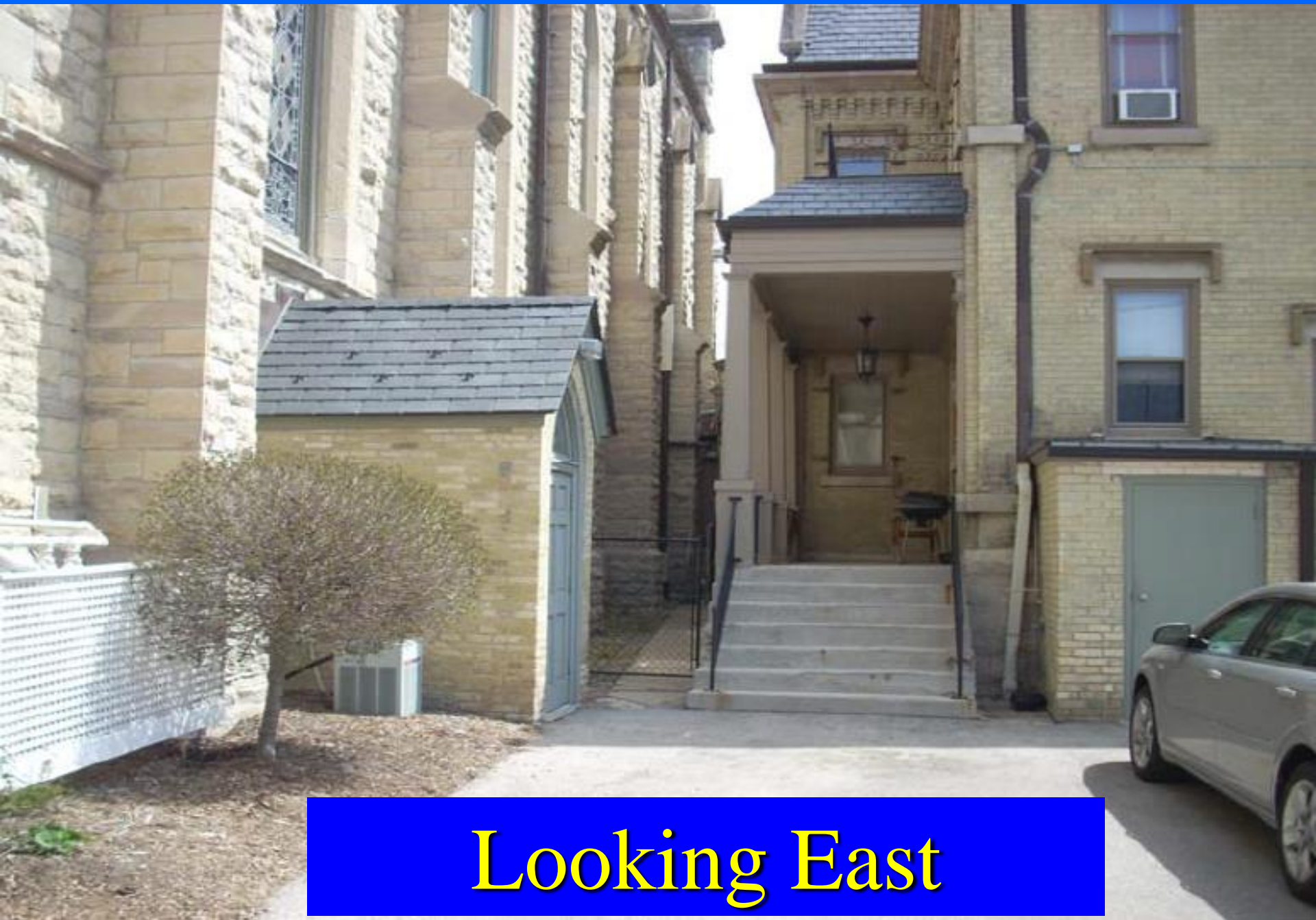
S 9th St

S. 9th

U.S. Bank

St Anthony School of Milwaukee-Administration Office





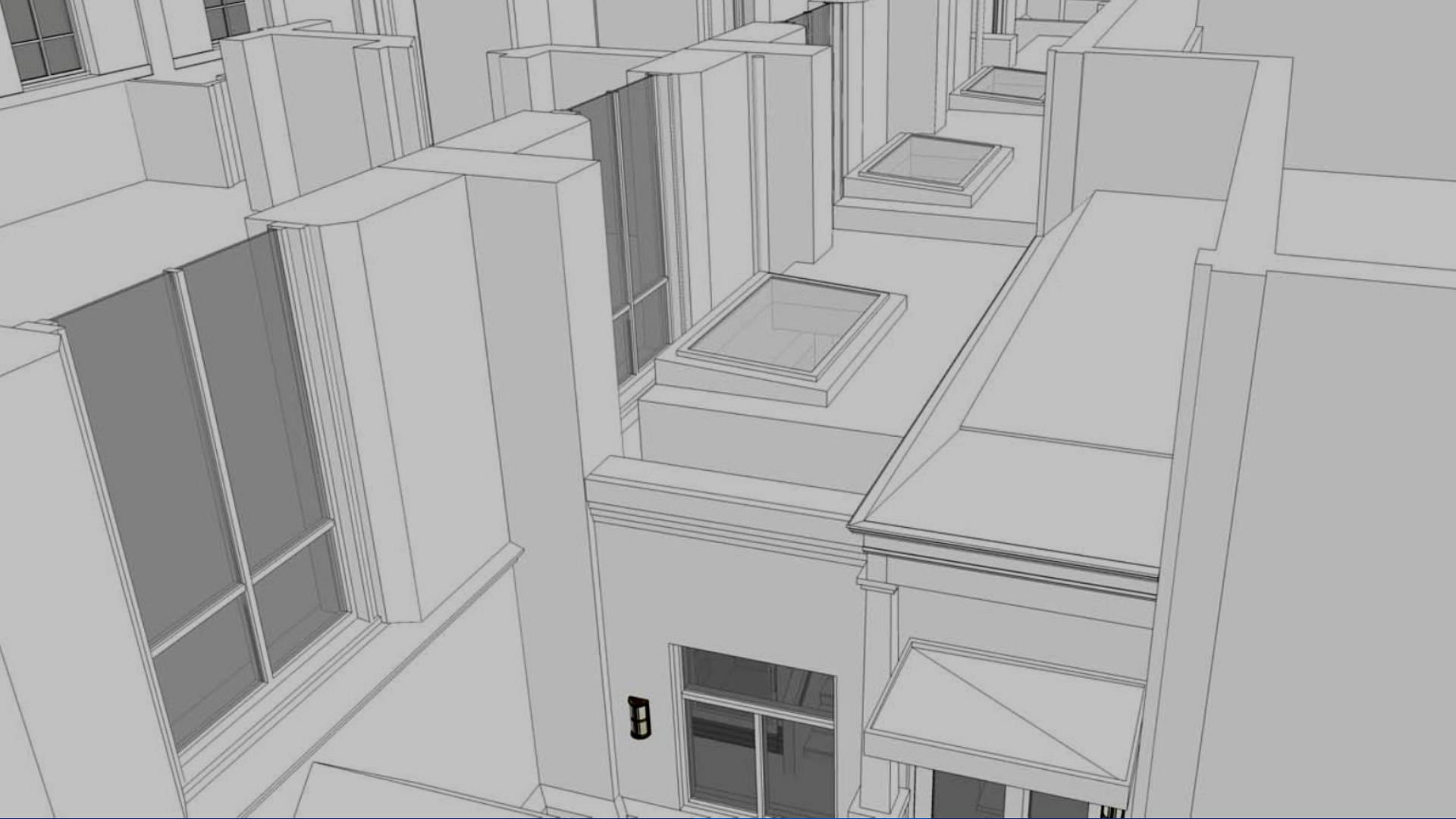
Looking East

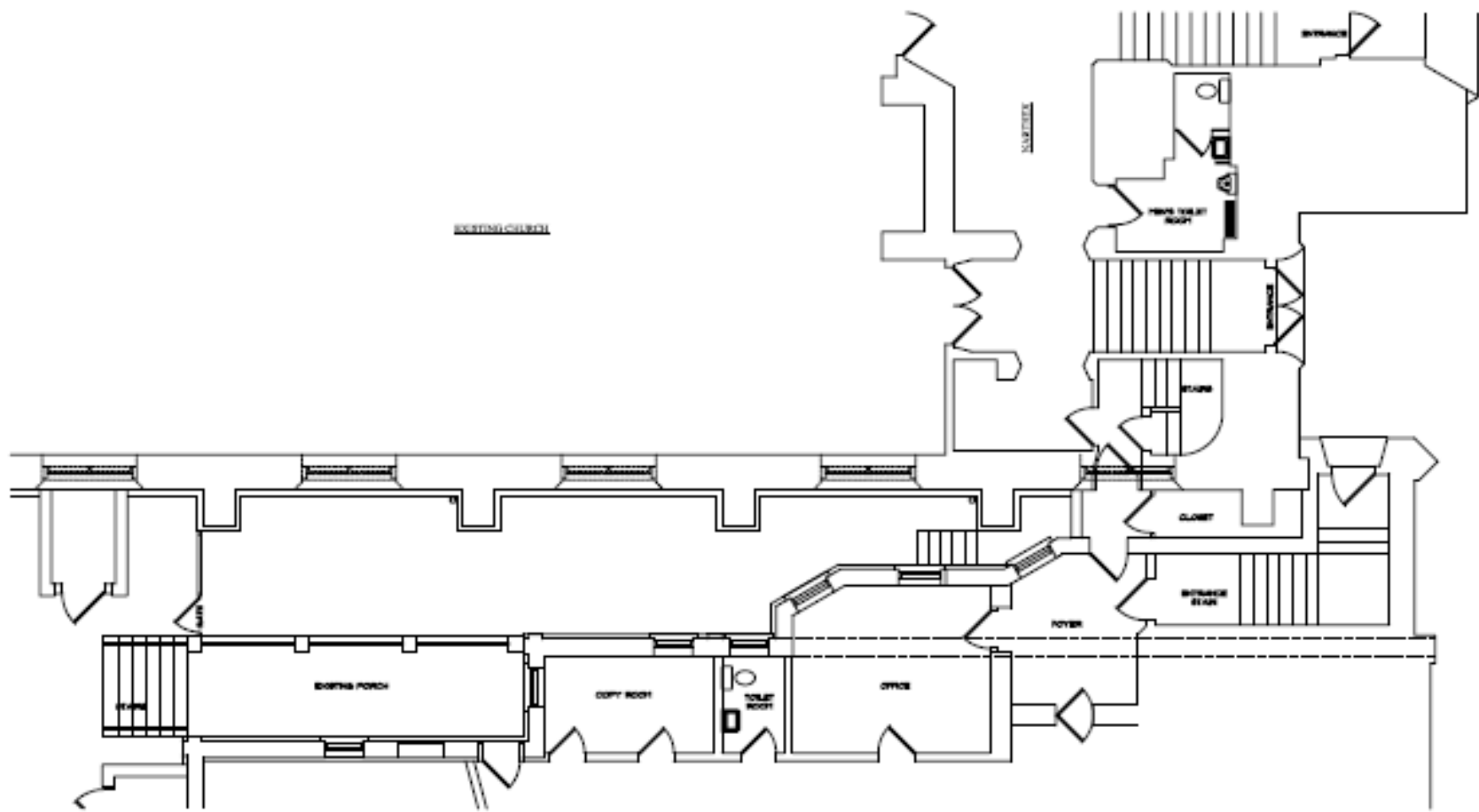


ELEVATION NOTES:

1. SPLIT FACE STONE TO MATCH EXISTING
2. "CREAM CITY" BRICK
3. BRICK CORNICE
4. ALUMINUM WINDOW
5. ALUMINUM DOOR
6. METAL CLAD CANOPY
7. EXISTING PIER

Image #1





1 Existing Partial Floor Plan
Scale: 1/4" = 1'-0"

EXISTING CHURCH

CHAIR
LIFT

NEW STAIRS

NEW CORRIDOR

EXISTING
VESTIBULE

NEW
ENTRANCE

RECTORY
OFFICE

Plan View

