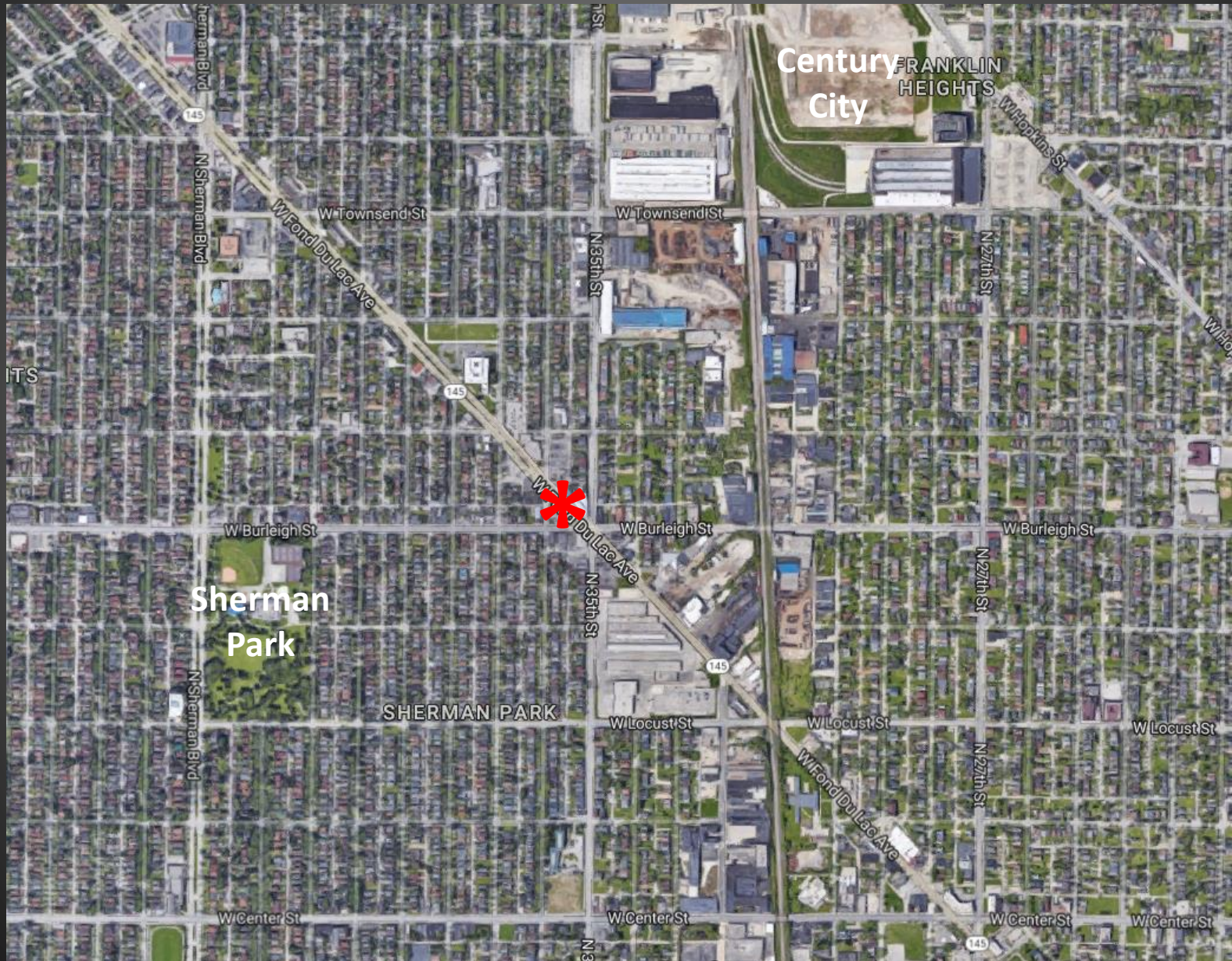
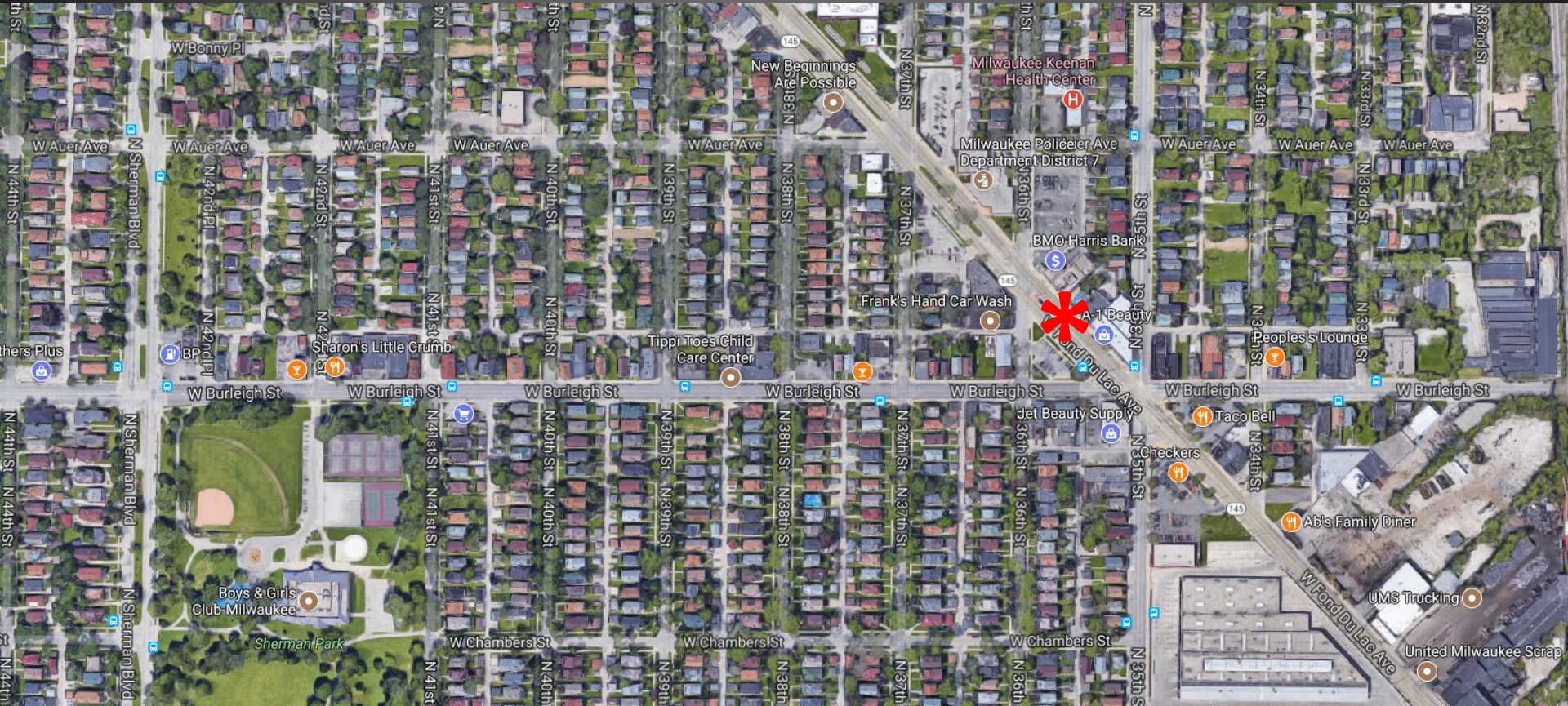


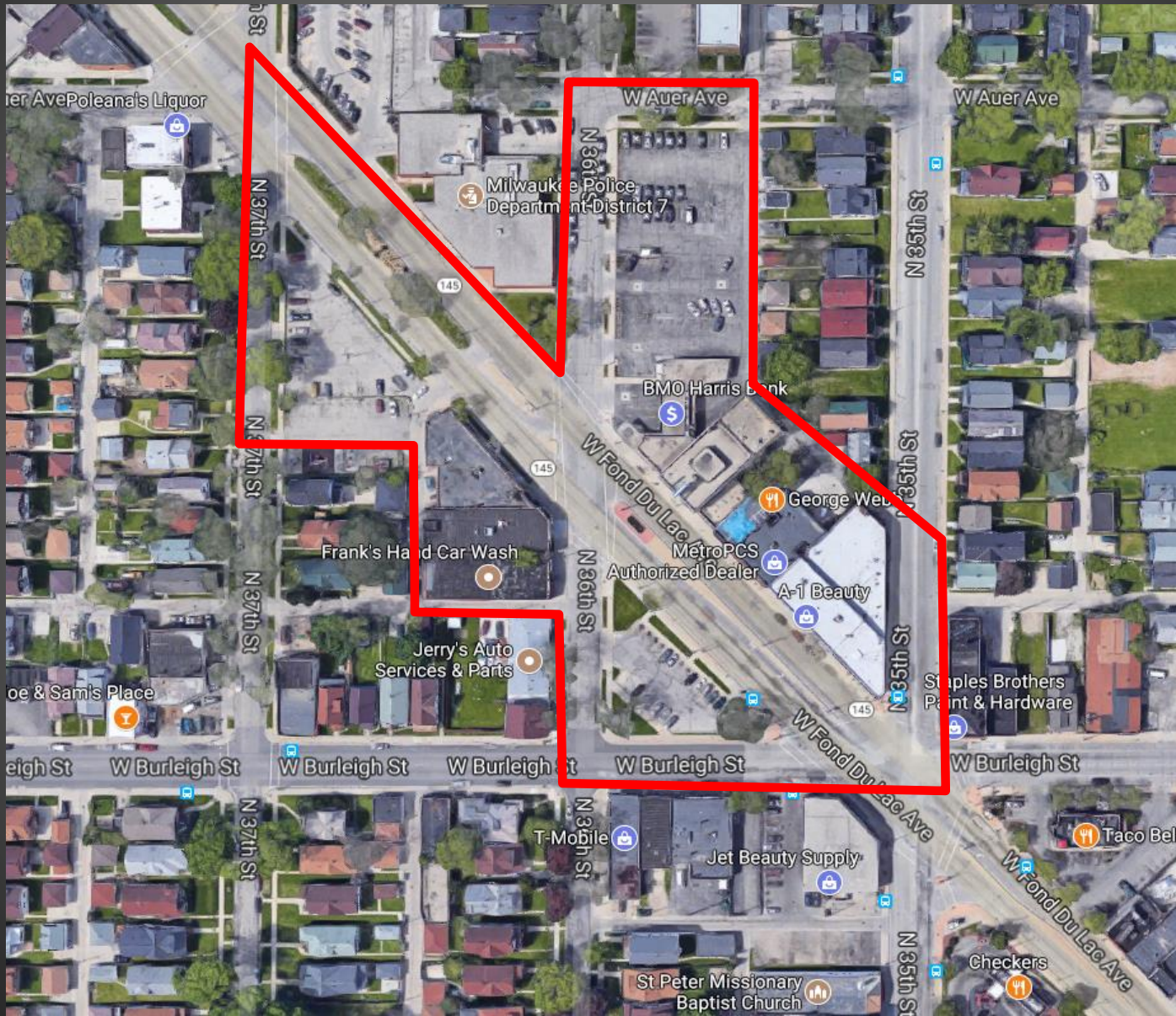
# TID 92: Sherman Phoenix



# TID 92: Sherman Phoenix



# TID 92: Sherman Phoenix

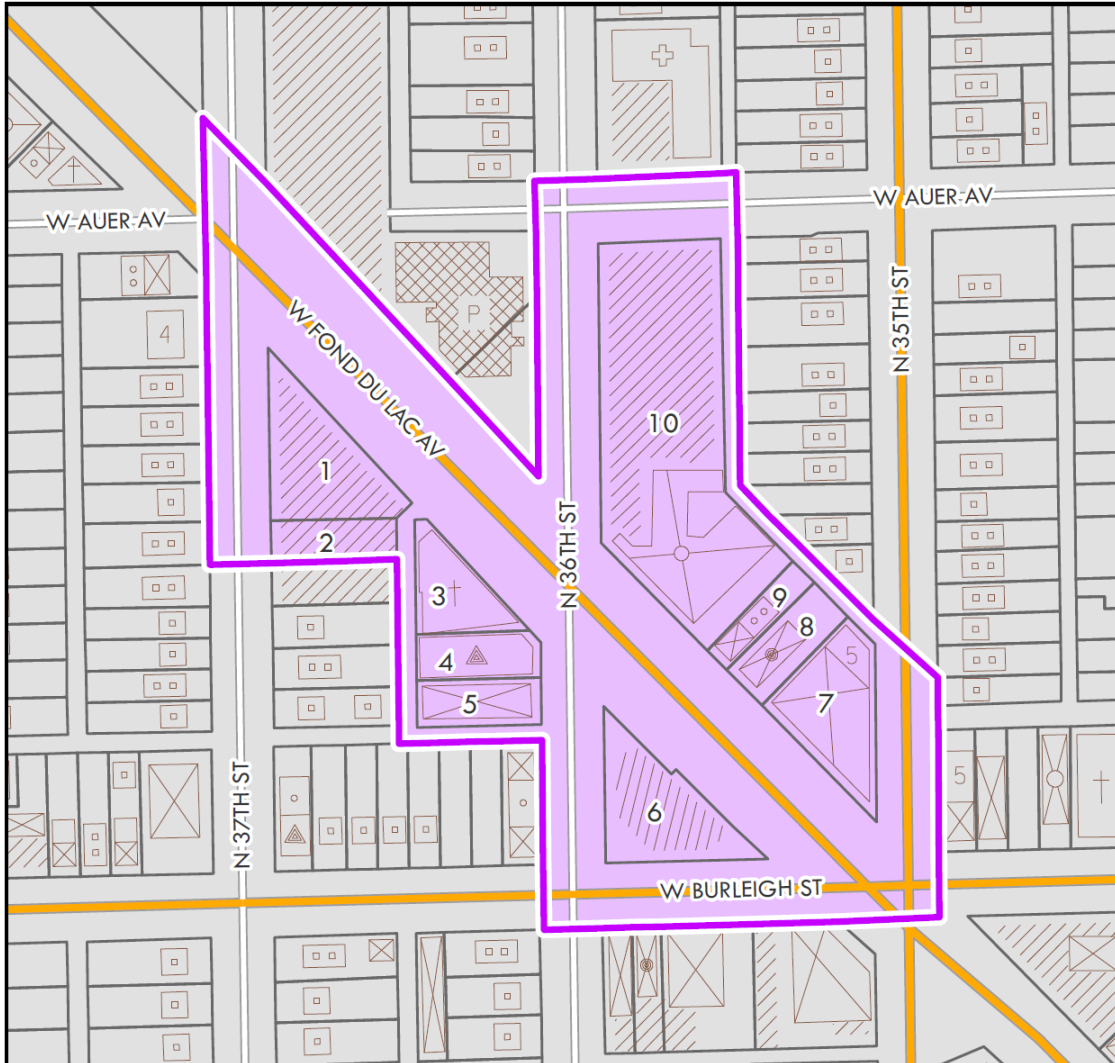


# TID 92: Sherman Phoenix

## TID 92: SHERMAN PHOENIX, MAP 1 BOUNDARY AND EXISTING LAND USE

Prepared by the Department of City Development Planning Division, 7/13/2017  
Source: City of Milwaukee Information Technology Management Division

0 100 200 Feet



### PROPERTY LIST

No.	Taxkey	Property Address
1	287-9947-000	3637 W FOND DU LAC AV
2	287-0720-200	3142 N 37TH ST
3	287-0706-100	3611 W FOND DU LAC AV
4	287-0706-200	3127 N 36TH ST
5	287-0708-000	3121 N 36TH ST
6	287-0702-100	3500 W BURLEIGH ST
7	287-0412-000	3500 W FOND DU LAC AV
8	287-0413-100	3520 W FOND DU LAC AV
9	287-0414-100	3528 W FOND DU LAC AV
10	287-0416-110	3536 W FOND DU LAC AV

### MAP LEGEND

- TID 92 Boundary
- Parcel Boundary

### Current Land Use

- SINGLE FAMILY RESIDENTIAL
- TWO FAMILY RESIDENTIAL
- MULTI-FAMILY RESIDENTIAL
- CONDOMINIUM
- DORMITORY
- ROOMING HOUSE
- HOTEL / MOTEL
- COMMERCIAL WITH RESIDENCE
- COMMERCIAL
- MIXED COMMERCIAL
- OFFICE OR PROFESSIONAL SERVICES
- MANUFACTURING AND WAREHOUSING
- UTILITY COMPANY
- STORAGE TANK
- ACCESSORY BUILDING
- HOSPITAL
- SKILLED CARE FACILITY / GROUP HOME
- PLACE OF WORSHIP
- NON - PUBLIC EDUCATION
- GOVERNMENTAL OR QUASI-PUBLIC BUILDING
- POLICE STATION
- FIRE STATION
- PUBLIC SCHOOL
- PLAYGROUND
- PARK
- CEMETERY
- PARKING
- BASKETBALL COURT
- TENNIS COURT
- FENCE
- ELECTRICAL LINE TRANSMISSION TOWER
- ELECTRICAL LINE
- UNDER CONSTRUCTION

# BMO Harris Bank



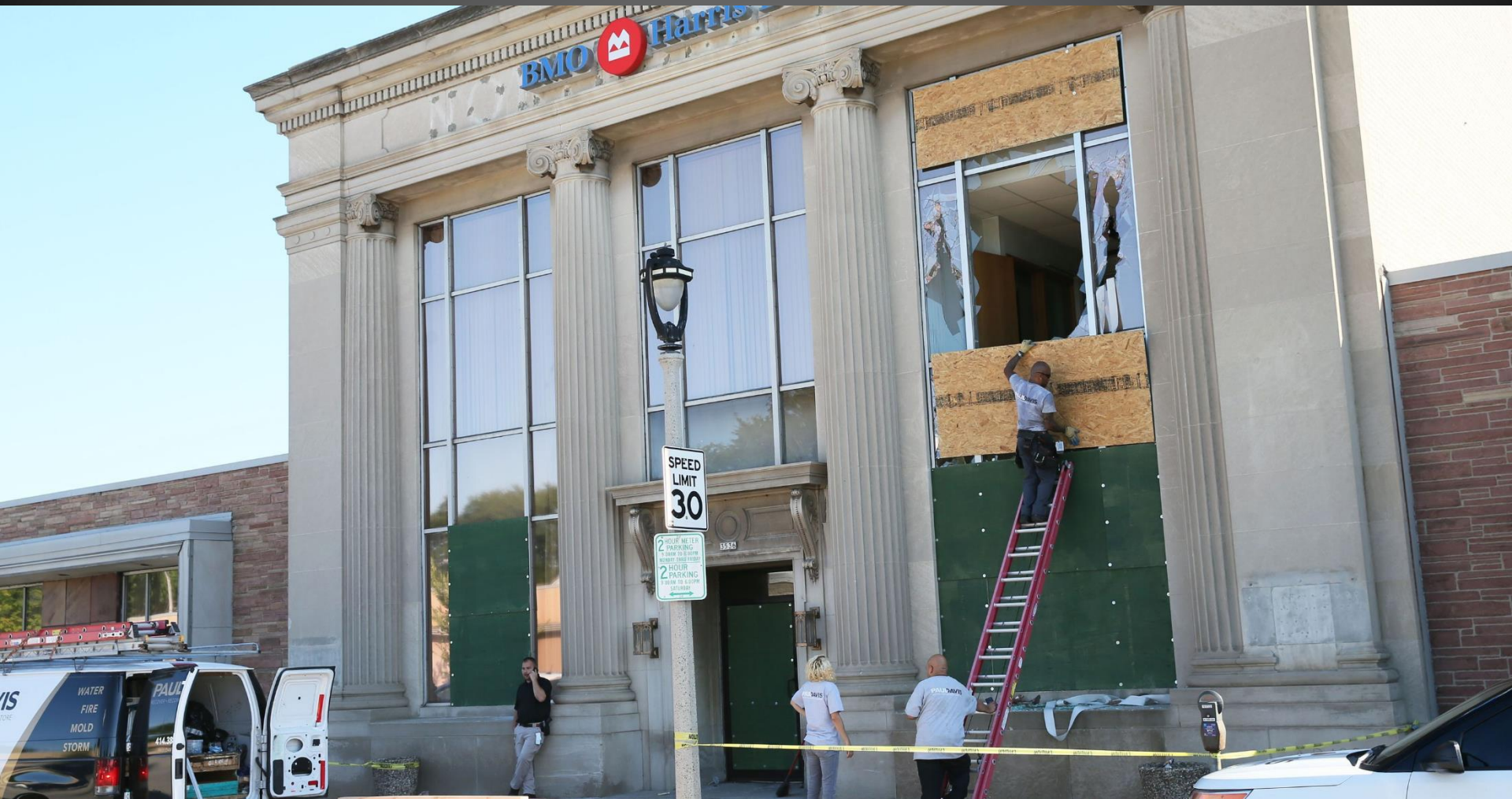
# BMO Harris Bank



# BMO Harris Bank



# BMO Harris Bank





# BMO Harris Bank



Image: Scott Paulus

# BMO Harris Bank



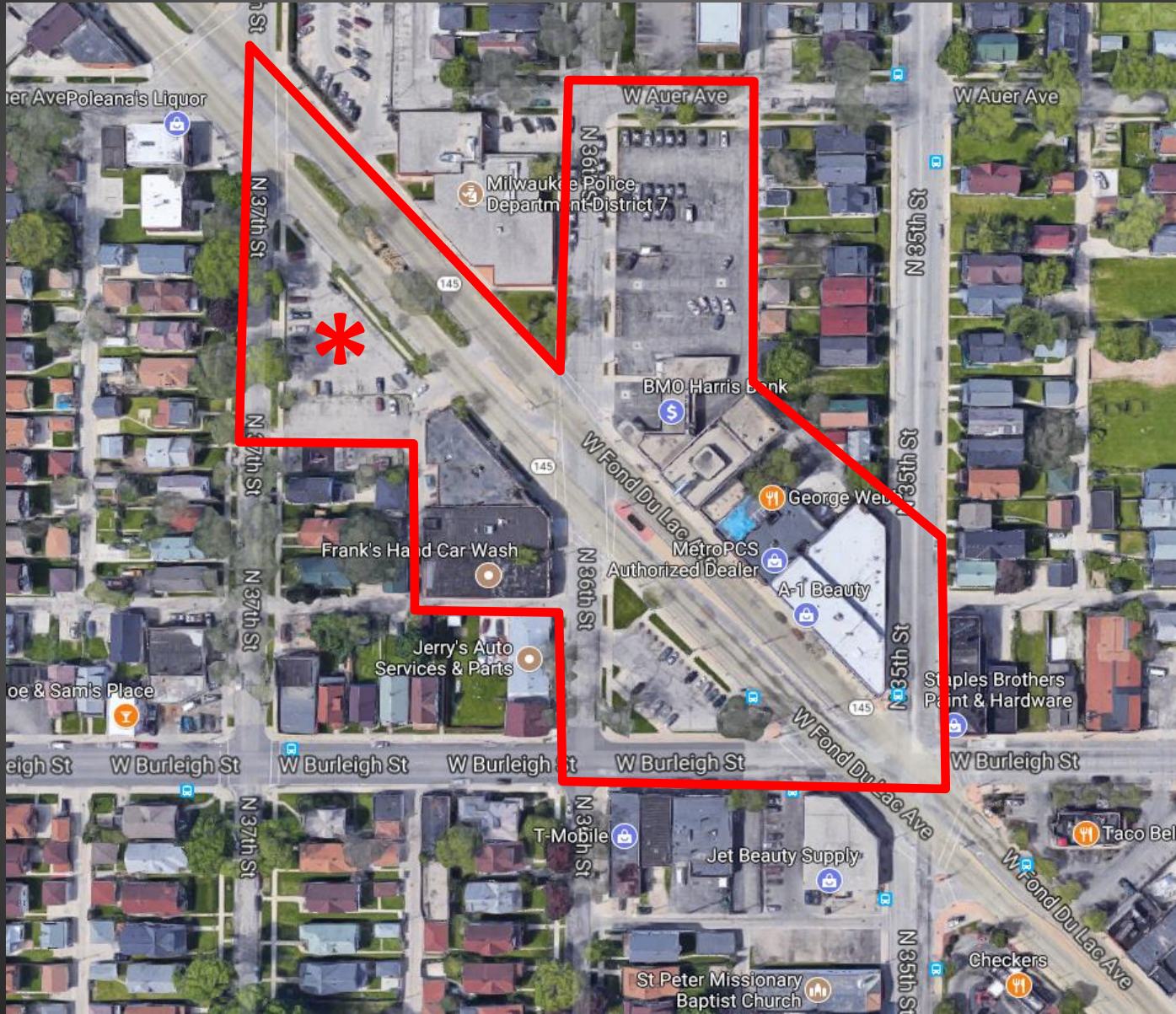
# BMO Harris Bank



# BMO Harris Bank



# BMO Harris Bank



# BMO Harris Bank



# Sherman Phoenix



<https://vimeo.com/218961838>

# Sherman Phoenix





# Sherman Phoenix



# Sherman Phoenix



# Sherman Phoenix



# Business Attraction/Retention



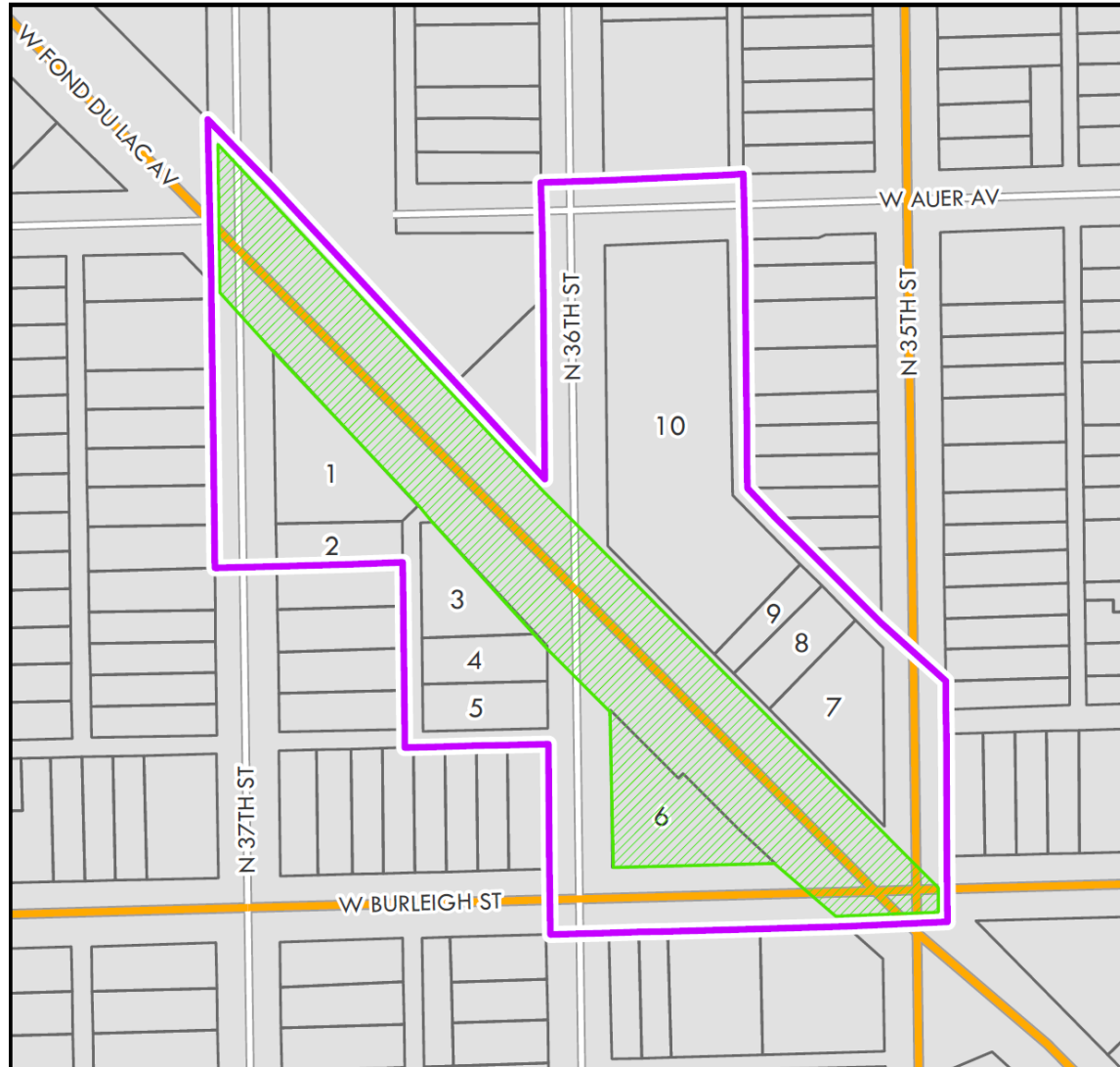
# Business Attraction/Retention



# Public Infrastructure Improvements

## TID 92: SHERMAN PHOENIX, MAP 3 PROPOSED USES AND IMPROVEMENTS




Prepared by the Department of City Development Planning Division, 7/13/2017  
Source: City of Milwaukee Information Technology Management Division



### PROPERTY LIST

No.	Taxkey	Property Address
1	287-9947-000	3637 W FOND DU LAC AV
2	287-0720-200	3142 N 37TH ST
3	287-0706-100	3611 W FOND DU LAC AV
4	287-0706-200	3127 N 36TH ST
5	287-0708-000	3121 N 36TH ST
6	287-0702-100	3500 W BURLEIGH ST
7	287-0412-000	3500 W FOND DU LAC AV
8	287-0413-100	3520 W FOND DU LAC AV
9	287-0414-100	3528 W FOND DU LAC AV
10	287-0416-110	3536 W FOND DU LAC AV

### MAP LEGEND

-  TID 92 Boundary
-  Parcel Boundary
-  Public Infrastructure Improvements

# Public Infrastructure Improvements



# TID 92: Sherman Phoenix Budget

TID #92 Budget	\$
Business Attraction/Retention Fund	\$325,000
Public Infrastructure Improvements	\$50,000
Administration	\$25,000
<b>TID Budget</b>	<b>\$400,000</b>

District to pay off by Year 22 (2039)

No capacity for paving projects