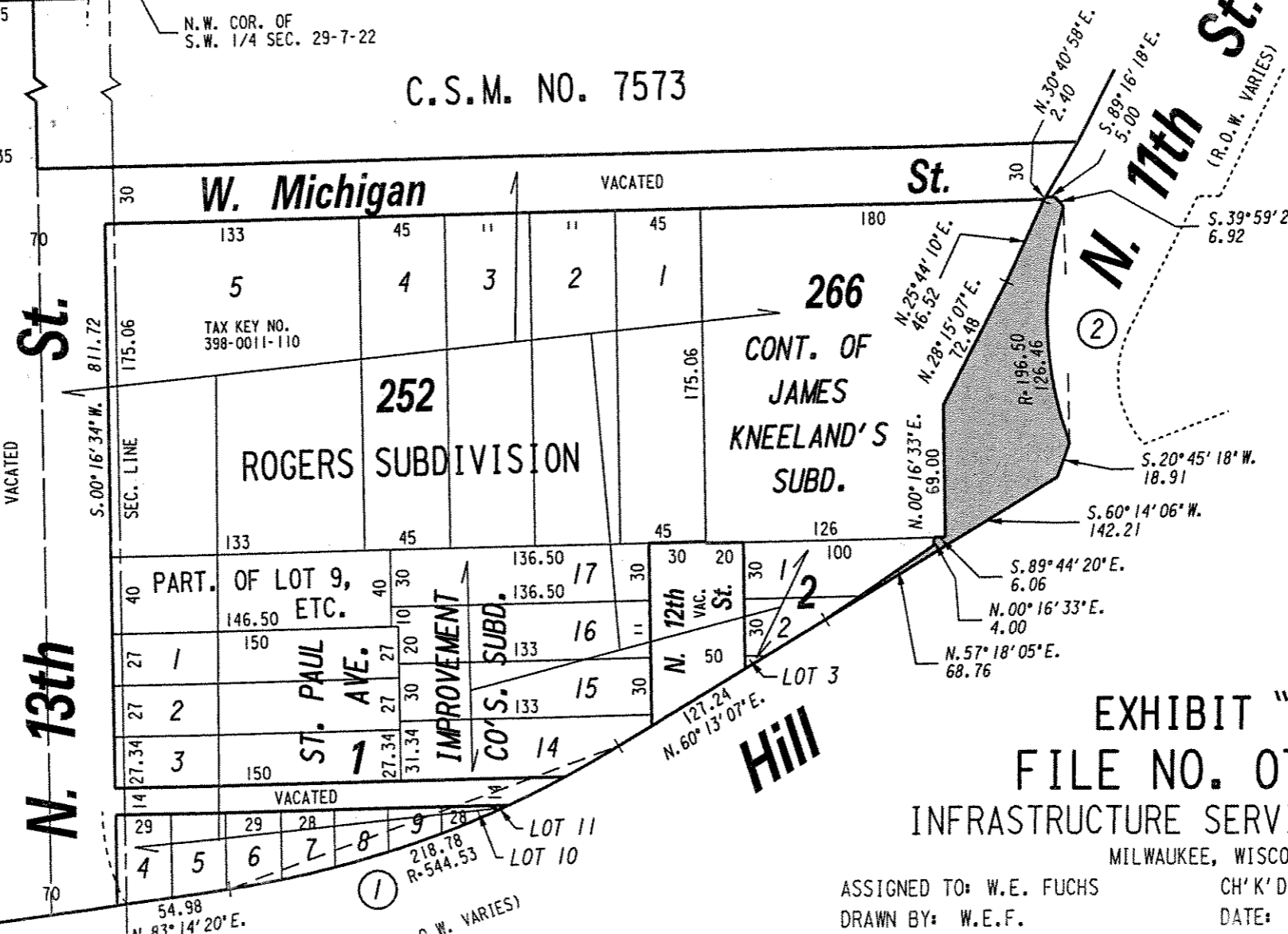


W. Wisconsin Ave. (R.O.W. VARIES) 1/4 SEC. LINE

S.W. 1/4 SEC. 29, T.7N., R.22E. 398

①  
R= 544.53'  
A= 218.78'  
C= 217.31'  
I <= 23°01'14"  
D <= 11°30'37"  
C.B.= N.71°43'43"E.

②  
R= 196.50'  
A= 126.46'  
C= 124.29'  
I <= 36°52'25"  
D <= 18°26'12.5"  
C.B.= S.00°19'05"E.



■ PORTION OF PUBLIC STREET PROPOSED TO BE VACATED

EXHIBIT "A"  
FILE NO. 070069  
INFRASTRUCTURE SERVICES DIVISION  
MILWAUKEE, WISCONSIN

ASSIGNED TO: W.E. FUCHS  
DRAWN BY: W.E.F.  
PROJECT/GRANT NO.: WK52337244  
APPROVED BY:

CH'K'D. BY: W.E. FUCHS  
DATE: APRIL 30, 2007  
SCALE: 1" = 80'

*Marcia Lindholm*  
CENTRAL DRAFTING & RECORDS MANAGER

*[Signature]*  
CITY ENGINEER